

The *Linkage Clustering* system is an over-the-counter (OTC) integrated

The Lingo Glucose System is an over-the-counter (OTC) Integrated

The user is not intended to take medical action based on the

Compatible Devices

WARNING:

- CAUTION:**

- **Choking hazard:** The Lingo Biosensor contains small parts that



43403101A

- The Lingo Biosensor Pack is sterile and non-pyrogenic unless opened

- ## Security Information

- You are responsible for properly securing and managing your phone.

- Taking more than 1000 mg of Vitamin C per day may falsely raise your

- Taking more than 1000 mg of vitamin C per day may falsely raise your blood pressure readings. Vitamin C can also interfere with blood sugar tests.

- This product should be disposed of in accordance with all applicable

This product should be disposed of in accordance with all applicable local regulations related to the disposal of electronic equipment.

The following table shows the System's accuracy at different CGM

--	--	--	--	--

system range is 55-200 mg/dL.

Thomas, F., C. G. Pretty, I. Desalve, J. G. Chase. 2016. Blood glucose levels of

² A study was conducted to assess the biosensor life where 77.1% of

2.17"

2.33"

2.17"

2.17"

2.33"

2.17"

IMPORTANT: Before using your Lingo Biosensor Pack and Lingo Biosensor Applicator, make sure you have an alcohol wipe (70% isopropyl alcohol) on hand to prepare the application site.

- 1:** Select site on back of upper arm. Do not use other sites as these may result in inaccurate glucose readings. Avoid areas with scars, moles, stretch marks, or lumps.
- 2:** Wash site using a plain soap, dry, and then clean with alcohol wipe. This will help remove any oily residue that may prevent the Lingo Biosensor from sticking properly. Allow site to air dry before proceeding.
- Note:** The area **MUST** be clean and dry following these instructions, or the Lingo Biosensor may not stay on for the full wear duration.

- 3:** Peel lid completely off Lingo Biosensor Pack. Unscrew cap from Lingo Biosensor Applicator.

CAUTION: Biosensor serial numbers must match on Lingo Biosensor Pack and Lingo Biosensor Applicator. All digits must match. Do NOT use if damaged or already opened.

- 4:** Line up dark marks on Lingo Biosensor Applicator and Lingo Biosensor Pack. On a flat hard surface, press down firmly on Lingo Biosensor Applicator until it comes to a stop.

- 5:** Lift Lingo Biosensor Applicator out of Lingo Biosensor Pack.

- 6:** Lingo Biosensor Applicator is ready to apply biosensor.

CAUTION: Lingo Biosensor Applicator now contains a needle. Do not touch inside Lingo Biosensor Applicator or put it back into Lingo Biosensor Pack.

Note:

- Step 6 shows the loaded applicator, the Lingo Biosensor is now ready to be applied.
- It has a small, flexible tip that inserts just under your skin to measure your glucose for up to 14 days.²
- No calibration with blood glucose values is needed!

- 7:** Place Lingo Biosensor Applicator over site. Push down firmly to apply biosensor.

CAUTION: Do NOT push down on Lingo Biosensor Applicator until placed over prepared site to prevent unintended results or injury.

- 8:** Gently pull Lingo Biosensor Applicator away.
- Note:** Applying the Lingo Biosensor may cause bruising or bleeding. If there is bleeding that does not stop, remove the Lingo Biosensor, and consult your doctor.

- 9:** Make sure Lingo Biosensor is secure. Put the cap back on the Lingo Biosensor Applicator. Discard used Lingo Biosensor Applicator and Lingo Biosensor Pack according to local regulations.

Note: Review all labeling provided with the Lingo Biosensor and compatible product before use.

Starting your Lingo Biosensor with the App

1. Check that your phone is connected to a network (WiFi or cellular). You can then download Lingo app from the App Store (iPhone).
2. Open the App and follow onscreen instructions to complete setup and accept the requested permissions.
3. When setup is complete, you'll be prompted to scan the Sensor to start it. You can check your glucose after the 60 minute start-up period.

Lingo Biosensor - FCC ID: QXS-LINBS1
This device complies with part 15 of the FCC Rules. Operation is subject to the following two conditions: (1) This device may not cause harmful interference, and (2) this device must accept any interference received, including interference that may cause undesired operation.
Changes or modifications not approved by Abbott could void the user's authority to operate the equipment.

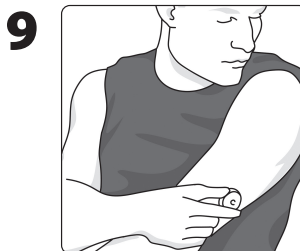
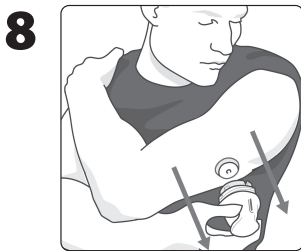
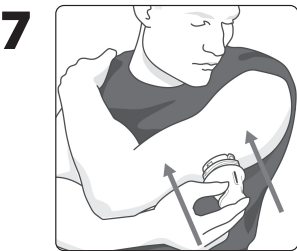
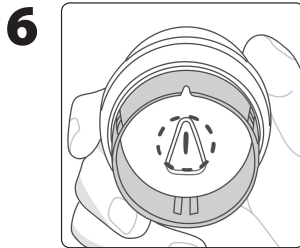
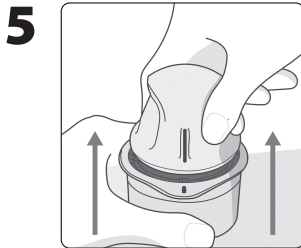
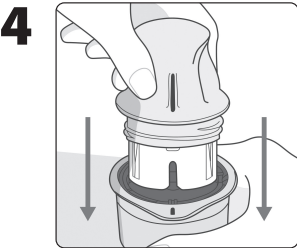
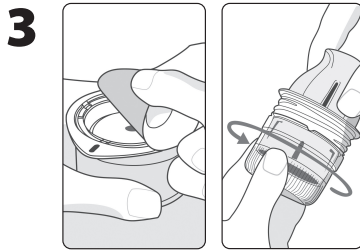
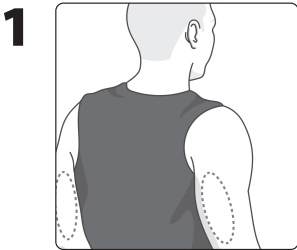


Lingo Biosensor Pack



Lingo Biosensor Applicator

The Lingo Biosensor initially comes in two parts: one part is in the Lingo Biosensor Pack and the other part is in the Lingo Biosensor Applicator. Follow the instructions to prepare and apply the Lingo Biosensor on the back of your upper arm. The Lingo Biosensor has a small, flexible tip that is inserted just under the skin. The Lingo Biosensor can be worn for up to 14 days.² The Lingo Biosensor is intended for use by persons 18 years and older not on insulin.



Labeling Symbols

	Do not use if package is damaged.
	Do not re-use
	Sterilized using irradiation
	Caution
	Use-by date
	Serial number
	Temperature limit
	Type BF applied part
	Manufacturer
	Consult instructions for use
	Batch code
	Catalog number
	Humidity limitation
	MR unsafe
	This product contains electronic equipment, batteries, sharps and materials that may contact bodily fluids during use. Dispose of product in accordance with all applicable local regulations.

To the extent allowed by law, the Lingo Glucose Biosensor is provided to you "as is." Abbott hereby disclaims all warranties (express, implied, and statutory) with respect to the Lingo Biosensor, including, but not limited to, the implied warranties of merchantability and fitness for a particular purpose. There are no warranties which extend beyond the description on the face hereof.

Customer Service:
1-888-764-7684
7 Days a Week from 9am to 9pm Monday through Friday Eastern Time and 9am to 5pm Saturday and Sunday Eastern Time; excluding holidays
All rights reserved. The Lingo Biosensor housing, Lingo, and related marks are marks of the Abbott group of companies.
©2024 Abbott ART43403-101 Rev. A 05/24

Manufacturer
Abbott Diabetes Care Inc.
1360 South Loop Road
Alameda, CA 94502 USA

