

User's Guide

Growell Drive

Growell IT

www.growellit.co.kr

FCC Information

This device complies with Part 15 of the FCC Rules. Operation is subject to the following two conditions:

- (1) This Device may not cause harmful interface, and
- (2) This device must accept any interference received, including interference that may cause undesired operation.

Note: This equipment has been tested and found to comply with the limits for CLASS B digital device, pursuant to Part 15 of FCC Rules. These limits are designed to provide reasonable protection against harmful interference when the equipment is operated in a commercial environment. This equipment generates, uses and can radiate radio frequency energy and, if not installed and used in accordance with the instructions, may cause harmful interference to radio communications. However, there is no guarantee that interference will not occur in a particular installation. If this equipment does cause harmful interference to radio or television reception, which can be determined by turning the equipment off and on, the user is encouraged to try correct the interference by one or more of the following measures:

- 1.1. Reorient or relocate the receiving antenna.
- 1.2. Increase the separation between the equipment and receiver.
- 1.3. Connect the equipment into an outlet on a circuit different from that to which receiver is connected.
- 1.4. Consult the dealer or experienced radio/TV technician for help.

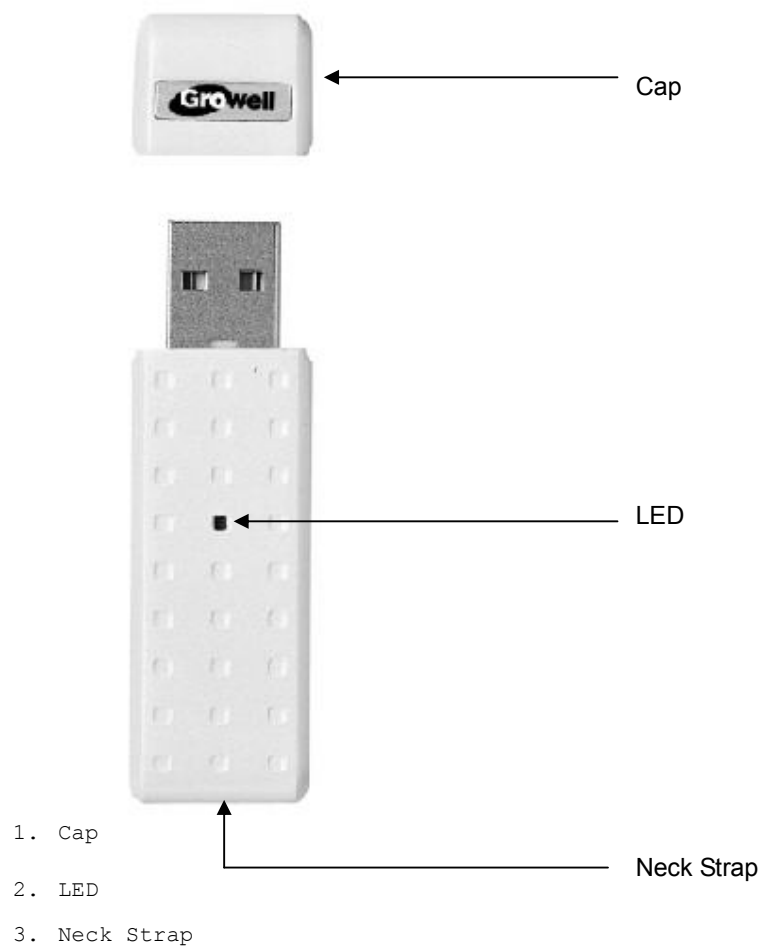
WARNING

Changes or modifications not expressly approved by the manufacturer could void the user's authority to operate the equipment.

Component

- . Growell Drive
- . Installation CD
- . Portable neck strap
- . User manual

Part's title & Description



1. Cap : Protection cap of USB Connector
2. LED : Blink while writing/reading data
3. Neck Strap : Hole for neck strap

● Product Specification

Model Name	Growell-16M / 32M / 64M / 128M / 256M
Interface	USB Specification 1.1 / 2.0
Operating Systems	Windows 98 / 98SE / ME / 2000 / XP or higher Mac 9.0 or higher, Linux 2.4 or higher, WinCE 3.0 or higher
Data Transfer Speed	Read : 942KB / sec, Write : 877KB / sec
Data Retention	Up to 10 Years
Certificate	MIC, FCC, CE
Application Device	Desktop PC, Notebook PC, PDA □ USB□ □□□□ □□ PC
Other	Password

● Product Features

- No external power is required
 - No external power is needed with use of USB power.
- Ultracompact and light portable device
 - No drivers required except for WIN98/SE OS.
- Plug & Play
 - Easy plug and play installation and use.
- Password
 - Protection data with your own password.
- LED Indicator
 - Connection and transmission status can be identified through LED.

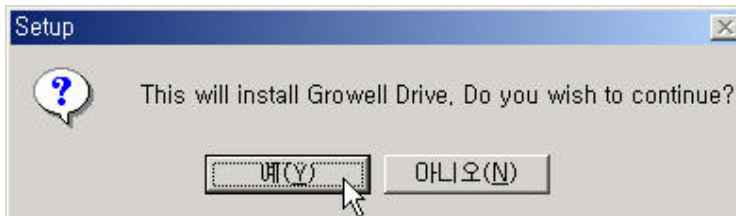
- **Installation**

- **Hardware Installation**

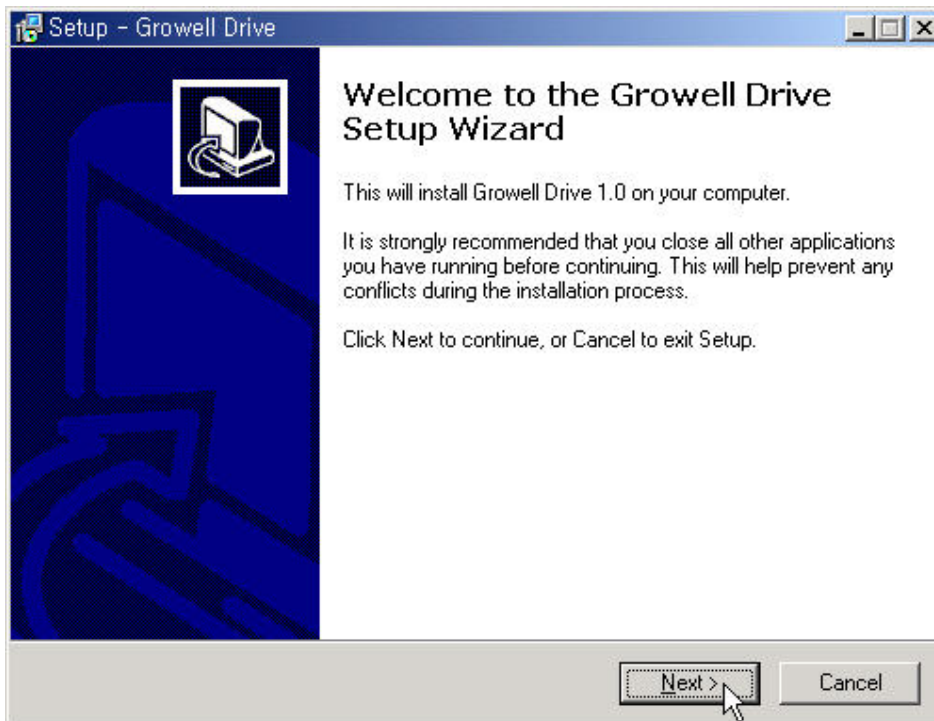
- Connect THE GROWELL DRIVE to USB port or extension cable.
 - Windows Explorer now recognizes THE GROWELL DRIVE as "Removable Disk"
 - Driver installation is needed for only Windows 98/98SE.
 - Connect The Growell Drive to the USB Port for input/output, edit/delete of data.

- **Driver, Utility installation(Driver installation is needed for only Windows 98/98SE)**

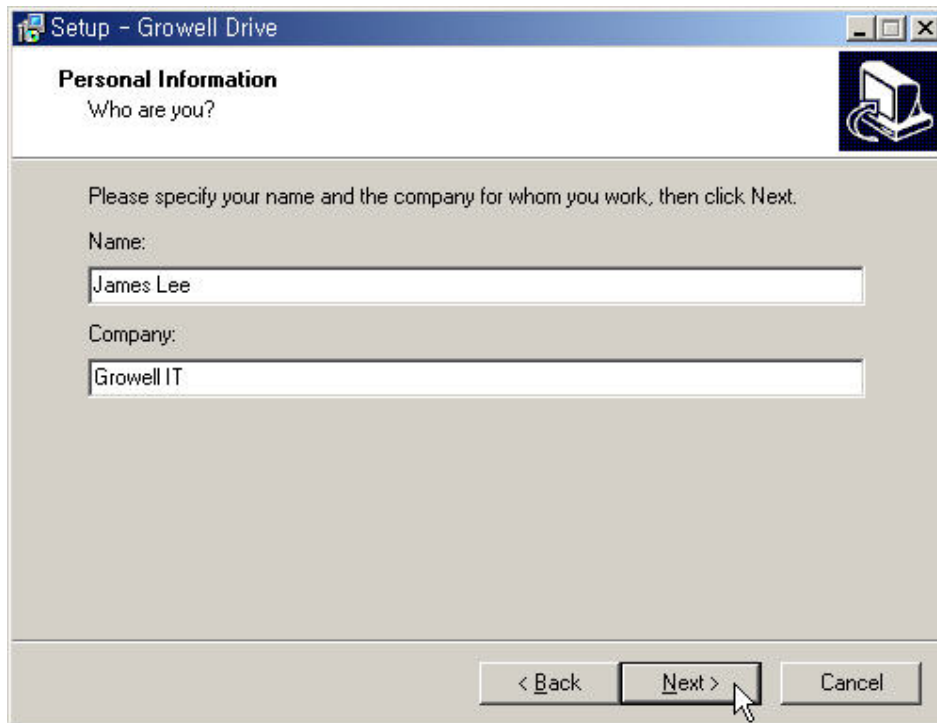
- The following screen will appear when you insert the supplied CD.



The following screen will be appeared when you press "yes".



- Fill in the blank after press the "Next"



Setup - Growell Drive

Personal Information
Who are you?

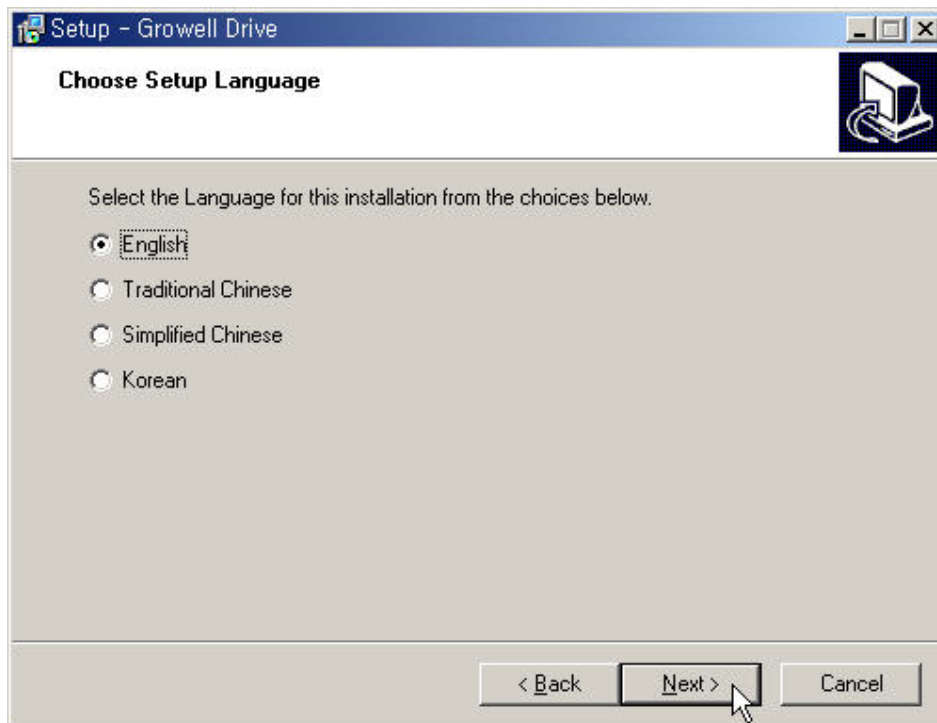
Please specify your name and the company for whom you work, then click Next.

Name:
James Lee

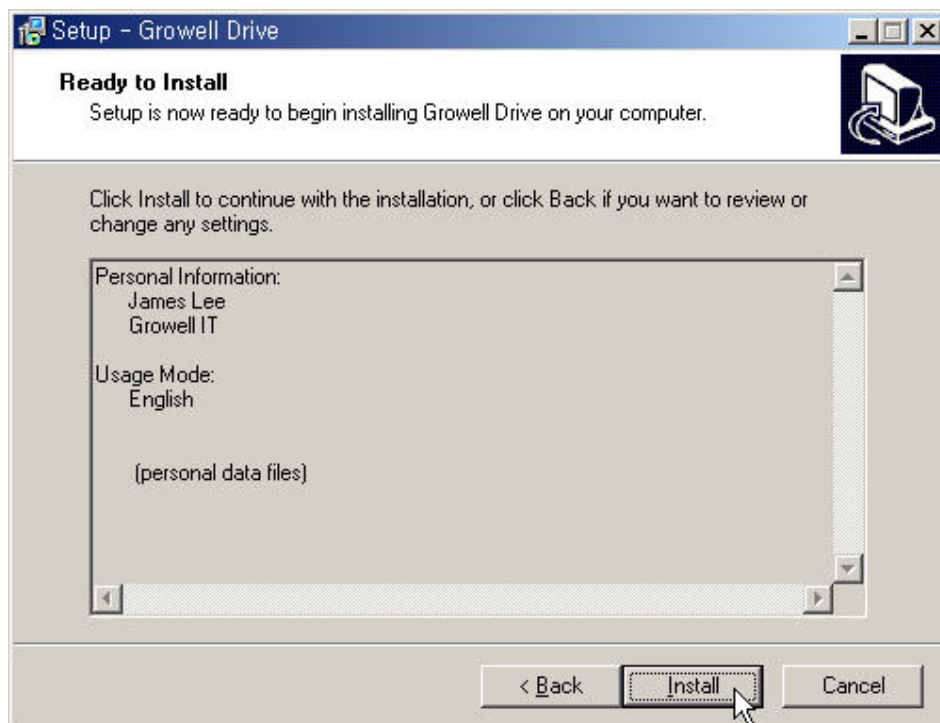
Company:
Growell IT

< Back Next > Cancel

- Choose your own language and press the "NEXT" button.



-
- If the following screen is appeared, press the "Install Button" It will be started.



- When you have done the installation, the following icon will be appeared the bottom of the right. But plug in the GROWELL DRIVE, when you see the following message "Plug In Device" for WIN 98/SE.



- The following screen will be appeared, when you click the above icon.



- The GROWELL DRIVE MANAGER PROGRAM will be appeared when you click the "OPEN".



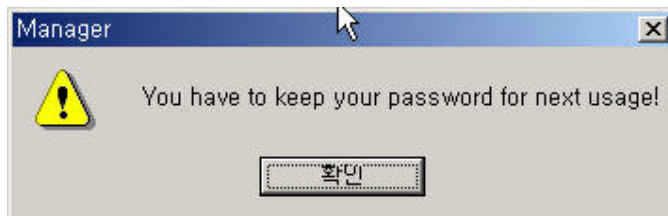
- If disconnect, the Growell Drive Manager Program will be not appeared.
- Format
 - Choose ether "Quick Format" or "Full Format".
 - Press "Formatting".



- Password

- The following screen will be appeared when you choose the "Using Password".

- Press the button "OK" .



- The following screen will be appeared when you choose the button "change password".

- The password has setted "0000"



- The Password mode is for windows.

- Type the used password carefully then type the new password what you want to.
- Press the button "apply".

If you lost your own password, should do full format again then you can get the new password but the data in the drive is delated.

- Safe the GROWELL DRIVE Unplug

- Windows 98/98SE/Me: Must be removed with Red LED light off.
- Windows 2000/XP: Please execute "Unplug or Eject Hardware"(Lower right hand conner of window screen) and then unplug.



- Mac : Drag and drop to "Recycle Bin" and then unplug.
- Linux : Execute 'unmount' command and then unplug.

Warranty

Warranty for 1 year.

Service Center

Growell IT B-11F, SamHo B/D, 275-6

YangaeDong Seochogu Seoul, Korea

TEL : 02-589-0471 FAX : 02-589-0470

E-mail : support@growellit.co.kr

Caution

- Should reconnect the GROWELL DRIVE for recognize of the password.
- Do not execute the Growell Drive while the LED is blinding for protect the data.
- Should remember your own password.
- Should do the following indication of safe unplug.
- The Growell IT has not responsibility for the product "GROWELL DRIVE" on the customer's own fault and the data.

W A R R A N T Y

Brand Name			
Model Name			
Purchase Date		Warranty	1 year
Price			
Purchase	Name		
Shop	Tel		
Customer	Address		
	Name		
	Tel		

