

LCD TV



User's Manual



MODEL : WTN-15B2, WTN-17WE2



IMPORTANT INFORMATION

WARNING

TO REDUCE THE RISK OF FIRE OR ELECTRIC SHOCK, DO NOT EXPOSE THIS PRODUCT TO RAIN OR MOISTURE.

	CAUTION RISK OF ELECTRIC SHOCK, DO NOT OPEN.	
CAUTION : TO REDUCE THE RISK OF ELECTRIC SHOCK, DO NOT REMOVE COVER (OR BACK). NO USER-SERVICEABLE PARTS INSIDE. REFER SERVICING TO QUALIFIED SERVICE PERSONNEL.		



The lightning flash with arrowhead symbol, within an equilateral triangle, is intended to alert the user to the presence of uninsulated "dangerous voltage" within the product's enclosure that may be of sufficient magnitude to constitute a risk of electric shock to persons.



The exclamation point within a triangle is intended to alert the user to the presence of important operating and maintenance (servicing) instructions in the literature accompanying the product.

WARNING : FCC Regulations state that any unauthorized changes or modifications to this equipment not expressly approved by the manufacturer could void the user's authority to operate this equipment.

U.S.A. ONLY

CAUTION : TO PREVENT ELECTRIC SHOCK, MATCH WIDE BLADE OF PLUG TO WIDE SLOT, FULLY INSERT.

Note to CATV system installer : This reminder is provided to call the CATV system installer's attention to Article 820-40 of the National Electrical Code that provides guidelines for proper grounding and, in particular, specifies that the cable ground shall be connected to the grounding system of the building, as close to the point of cable entry as practical.

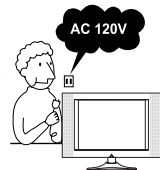
This product utilizes tin-lead solder, and fluorescent lamp containing a small amount of mercury. Disposal of these materials may be regulated due to environmental considerations. For disposal or recycling information, please contact your local authorities or the Electronic Industries Alliance : www.eia.org

S A F E T Y P R E C A U T I O N S

This set has been designed and manufactured to assure personal safety. Improper use can result in electric shock or fire hazard. The safeguards incorporated in this unit will protect you if you observe the following procedures for installation, use and servicing. This unit is fully transistorized and does not contain any parts that can be repaired by the user.

- Read instructions —All operating instructions must be read and understood before the product is operated.
- Keep this manual in a safe place —These safety and operating instructions must be kept in a safe place for future reference.
- Observe warnings —All warnings on the product and in the instructions must be observed closely.
- Follow instructions —All operating instructions must be followed.
- Attachments —Do not use attachments not recommended by the manufacturer. Use of inadequate attachments can result in accidents.

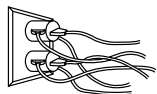
- Power source —This product must operate on a power source specified on the specification label. If you are not sure of the type of power supply used in your home, consult your dealer or local power company. For units designed to operate on batteries or another power source, refer to the operating instructions.



- Power cord protection —The AC cords must be routed properly to prevent people from stepping on them or objects from resting on them. Check the cords at the plugs and product.



- Overloading —Do not overload AC outlets or extension cords. Overloading can cause fire or electric shock.



- Entering of objects and liquids —Never insert an object into the product through vents or openings. High voltage flows in the product, and inserting an object can cause electric shock and/or short internal parts. For the same reason, do not spill water or liquid on the product.



- Servicing —Do not attempt to service the product yourself. Removing covers can expose you to high voltage and other dangerous conditions. Request a qualified service person to perform servicing.



- Repair —If any of the following conditions occurs, unplug the AC cord from the AC outlet, and request a qualified service person to perform repairs.

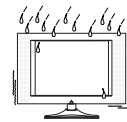


a. When the power cord or plug is damaged.

b. When a liquid was spilled on the product or when objects have fallen into the product.



c. When the product has been exposed to rain or water.



d. When the product does not operate properly as described in the operating instructions. Do not touch the controls other than those described in the operating instructions. Improper adjustment of controls not described in the instructions can cause damage, which often requires extensive adjustment work by a qualified technician.



e. When the product has been dropped or

damaged.

- f. When the product displays an abnormal condition. Any noticeable abnormality in the product indicates that the product needs servicing.

- **Replacement parts** —In case the product needs replacement parts, make sure that the service person uses replacement parts specified by the manufacturer, or those with the same characteristics and performance as the original parts. Use of unauthorized parts can result in fire, electric shock and/or other danger.



- **Safety checks** —Upon completion of service or repair work, request the service technician to perform safety checks to ensure that the product is in proper operating condition.
- **Wall or ceiling mounting** —When mounting the product on a wall or ceiling, be sure to install the product according to the method recommended by the manufacturer.
- **Polarization** —The product may be equipped with a polarized alternating current line plug (a plug having one blade wider than the other). This plug will fit into the AC outlet only one way.

This is a safety feature. If you are unable to insert the plug fully into the outlet, try reversing the plug. If the plug should still fail to fit, contact your electrician to replace your obsolete outlet. Do not defeat the safety purpose of the polarized plug.

- **Unplug the AC cord from the AC outlet before installing the speakers.**
- **Cleaning**—Unplug the AC cord from the AC outlet before cleaning the product. Use a damp cloth to clean the product. Do not use liquid cleaners or aerosol cleaners.



- **Water and moisture**—Do not use the product

near water, such as bathtub, washbasin, kitchen sink and laundry tub, swimming pool and in a wet basement.



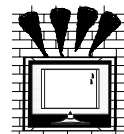
- **Stand**—Do not place the product on an unstable cart, stand, tripod or table. Placing the product on an unstable base can cause the product to fall, resulting in serious personal injuries as well as damage to the product. Use only a cart, stand, tripod, bracket or table recommended by the manufacturer or sold with the product. When mounting the product on a wall, be sure to follow the manufacturer's instructions. Use only the mounting hardware recommended by the manufacturer.



- **When relocating the product** placed on a cart, it must be moved with utmost care. Sudden stops, excessively force and uneven floor surface can cause the product to fall from the cart.



- **Ventilation**—The vents and other openings in the cabinet are designed for ventilation. Do not cover or block these vents and openings since insufficient ventilation can cause overheating and/or shorten the life of the product. Do not place the product on a bed, sofa, rug or other similar surface, since they can block ventilation openings. This product is not designed for built-in installation; do not place the product in an enclosed place such as a bookcase or rack, unless proper ventilation is provided or the manufacturer's instructions are followed.



- **The LCD panel** used in this product is made of glass. Therefore, it can break when the product is dropped or applied with impact. Be careful not to be injured by broken glass pieces in case the panel breaks.

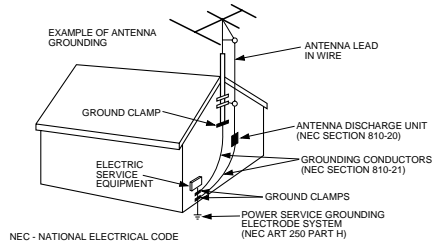
- **Heat sources**—Keep the product away from

heat sources such as radiators, heaters, stoves and other heat-generating products (including amplifiers).



- The LCD panel is a very high technology product with 2,359,296 (15")/ 2,949,120 (17" Wide) thin film transistors, giving you fine picture details. Occasionally, a few non-active pixels may appear on the screen as a fixed point of blue, green or red. Please note that this does not affect the performance of your product.
- If an outside antenna is connected to the television equipment, be sure the antenna system is grounded so as to provide some protection against voltage surges and built-up static charges.

Section 810 of the National Electrical Code provides information with respect to proper grounding of the mast and supporting structure, grounding of the lead-in wire to an antenna discharge unit, size of grounding conductors, location of antenna-discharge unit, connection to grounding electrodes, and requirements for the grounding electrode.



- For added protection for this television equipment during a lightning storm, or when it is left unattended and unused for long periods of time, unplug it from the wall outlet and disconnect the antenna. This will prevent damage to the equipment due to lightning and power-line surges.
- An outside antenna system should not be located in the vicinity of overhead power lines or other electric light or power circuits, or where it can fall into such power lines or circuits. When installing an outside antenna system, extreme care should be taken to keep from touching such power lines or circuits as contact with them might be fatal.

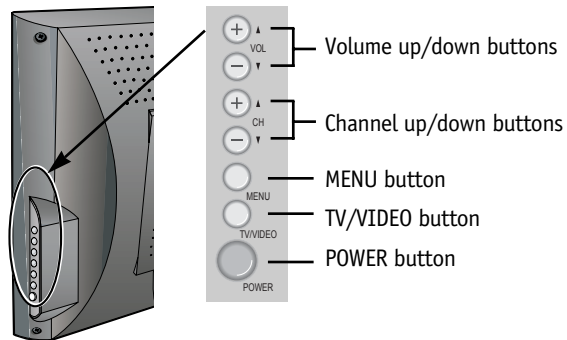
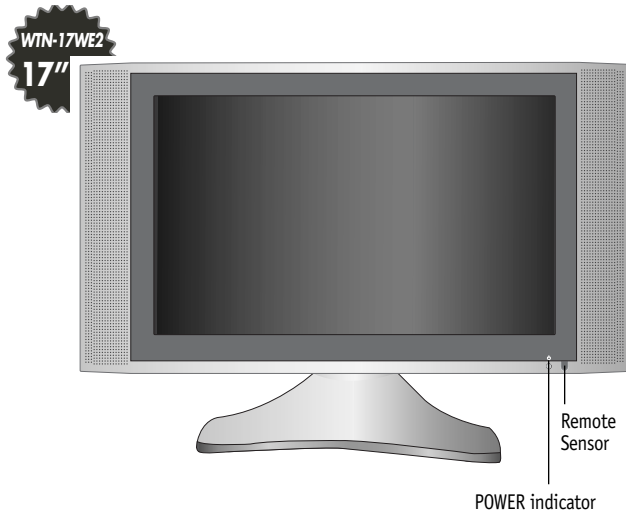


TABLE OF CONTENTS

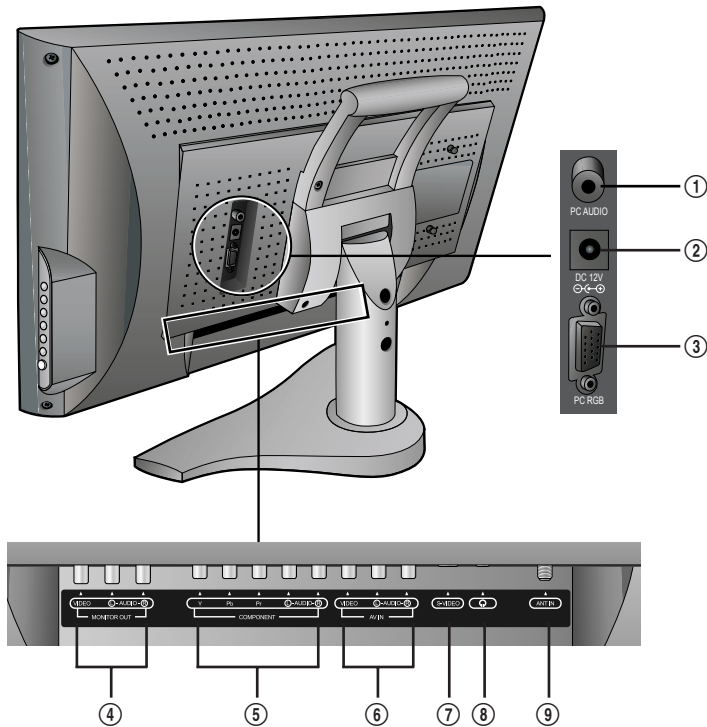
1	IMPORTANT INFORMATION
2	SAFETY PRECAUTIONS
5	TABLE OF CONTENTS
6	FUNCTIONAL OVERVIEW
	FRONT VIEW
	REAR VIEW
	REMOTE CONTROL
9	PREPARATION
11	CONNECTIONS
	MAINS CONNECTION
	ANTENNA CONNECTION
	CONNECTING EXTERNAL EQUIPMENT
16	BASIC OPERATIONS
	SWITCHING ON/OFF
	TV/AV MODE SELECTION
	VOLUME CONTROL
	CHANNEL SELECTION
18	MENU ADJUSTMENT
	CHANNEL ADJUSTMENT
	PICTURE ADJUSTMENT
	SOUND ADJUSTMENT
	PC ADJUSTMENT
	FUNCTIONS ADJUSTMENT
29	TROUBLESHOOTING GUIDE
31	SPECIFICATION

FUNCTIONAL OVERVIEW

FRONT VIEW



REAR VIEW

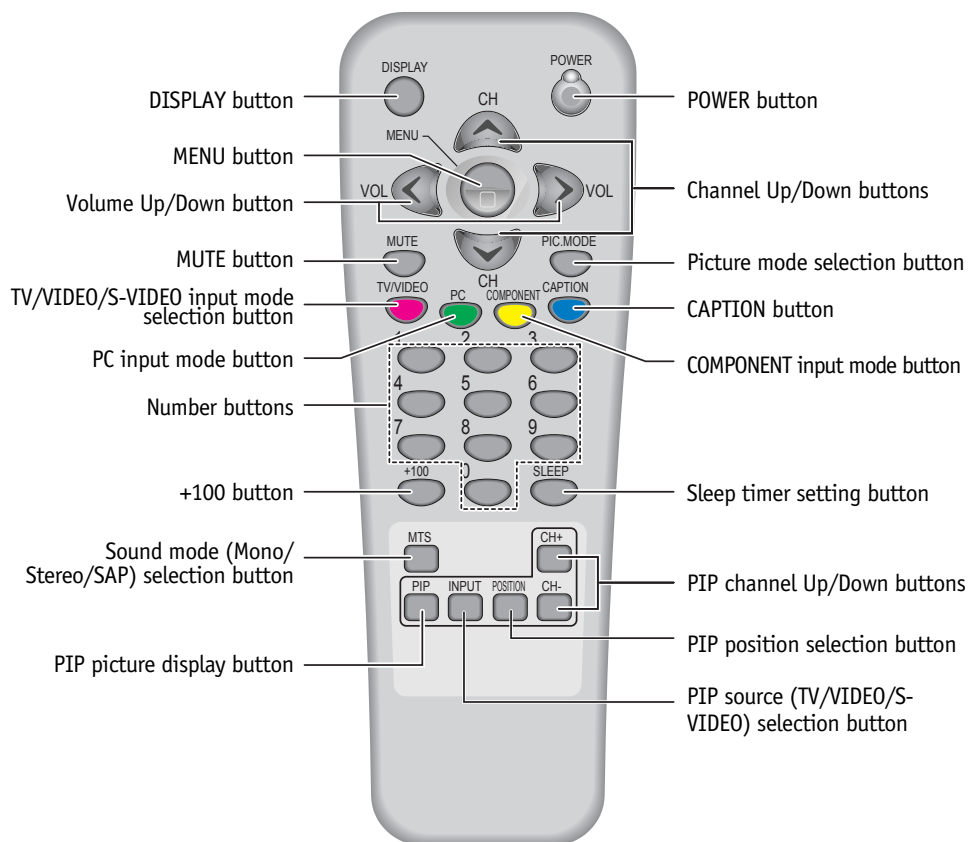


- ① PC AUDIO input
- ② Power (DC 12V) input
- ③ PC RGB input
- ④ MONITOR OUTPUT
- ⑤ DTV/DVD input
- ⑥ Audio/Video input
- ⑦ S-VIDEO input
- ⑧ Headphone jack
- ⑨ Antenna input



TV set can be watched most comfortably with changing the angle of the LCD TV set. You can adjust the angle up to 5° forward, horizontally 90° backward.

REMOTE CONTROL



- 1) **DISPLAY** button displays the current channel number, broadcasting sound mode (or external input mode) and time.
- 2) **PIP** button works only when main picture is **PC** mode or **COMPONENT** input (480p, 720p, 1080i) mode.
- 3) **SLEEP** button allows you to set a time when the TV automatically switches to standby: OFF → 30 MINUTES → 60 MINUTES → 90 MINUTES → 120 MINUTES

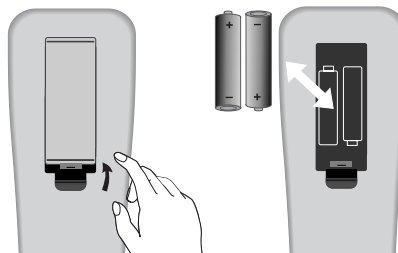
PREPARATION

INSERTING BATTERIES INTO THE REMOTE CONTROLLER

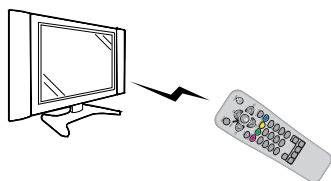
To load the batteries, turn the remote controller over and open the battery compartment.

Insert the batteries supplied (two 1.5V, type AAA).

Make sure that the polarity matches with the (+) and (-) marks inside of the battery compartment.

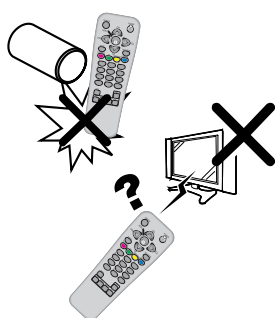


To avoid damage from possible battery leakage, remove the batteries if you do not plan to use the remote controller for an extended period of time.



USING THE REMOTE CONTROL UNIT

Use the remote control unit by pointing it towards the remote control sensor on the Display. Objects between the remote control unit and the remote control sensor may prevent proper operation.



CAUTIONS REGARDING REMOTE CONTROL UNIT

- Do not expose the remote control unit to shock. In addition, do not expose the remote control unit to liquids, and do not place in an area with high humidity.
- Do not install or place the remote control unit under direct sunlight. The heat may cause deformation of the remote control unit.
- The remote control unit may not work properly if the remote control sensor on the Display is under direct sunlight or strong lighting. In such cases, change the angle of the lighting or the Display, or operate the remote control unit closer to the remote control sensor.

SUPPLIED ACCESSORIES

Make sure the following accessories are provided with the product.

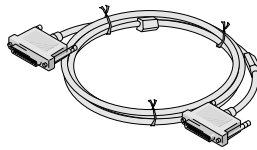
Remote control unit



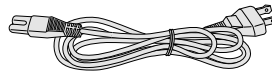
AAA Batteries



PC signal cable (D-sub 15pin)



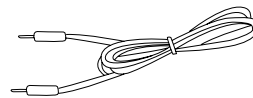
AC cord



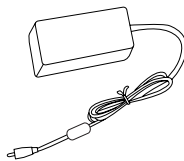
Operation manual



PC Audio cable

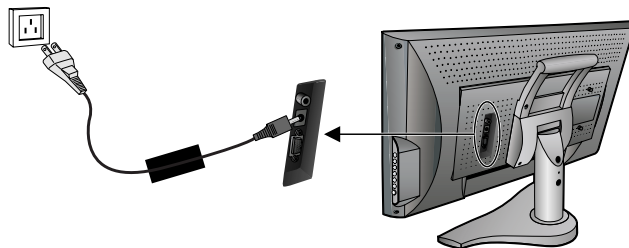


AC Adaptor



CONNECTIONS

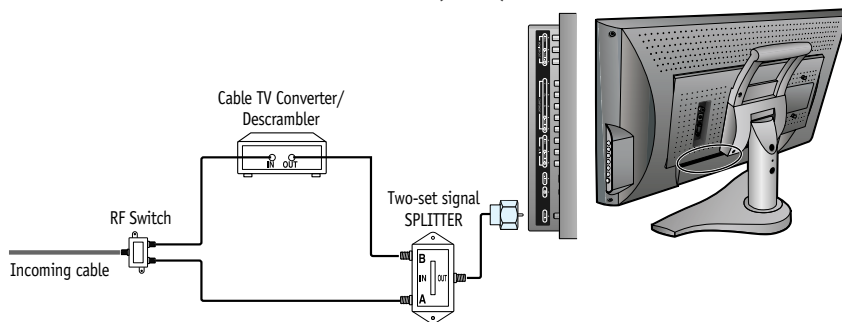
MAINS CONNECTION



Plug the mains cable into the power socket with 100V - 240V AC, 50/60Hz .

ANTENNA CONNECTION

■ TO CABLE TV (CATV)



- A 75-ohm coaxial cable connector is built into the set for easy hookup. When connecting the 75-ohm coaxial cable to the set, screw the 75-ohm cable to the ANT. terminal.
- Some cable TV companies offer "premium pay channels". Since the signals of these premium pay channels are scrambled, a cable TV converter/descrambler is generally provided to the subscriber by the cable TV company. This converter/descrambler is necessary for normal viewing of the scrambled channels. (Set your TV to channel 3 or 4, typically one of these channels is used. If this is unknown, consult your cable TV company.) For more specific instructions on installing cable TV, consult your cable TV company. One possible method of utilizing the converter/descrambler provided by your cable TV company is explained next page. Please note: An RF switch provided with two inputs (A and B) is required (not supplied).