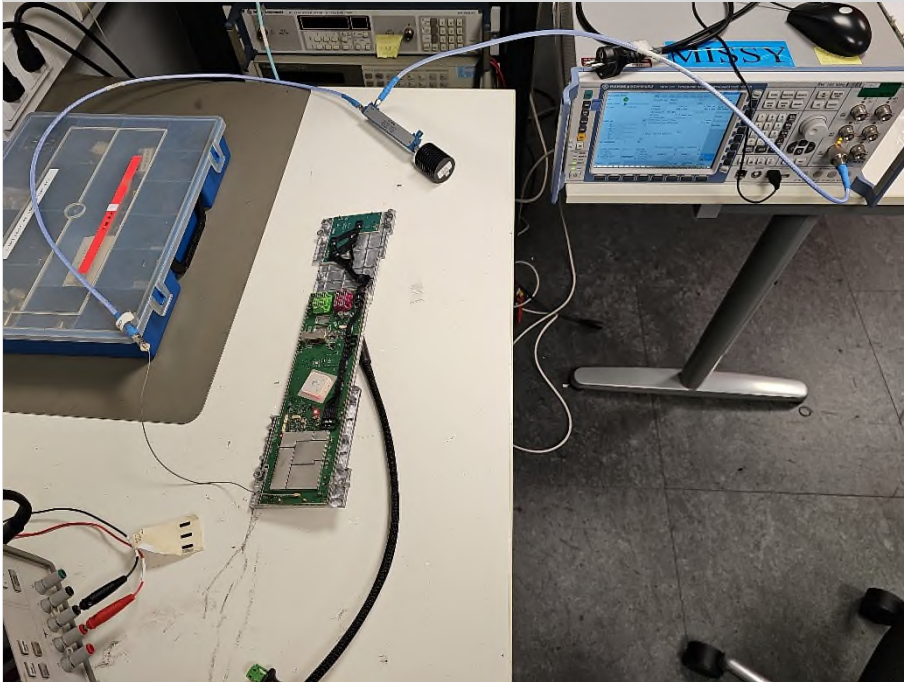


Annex 4: Test setup photographs

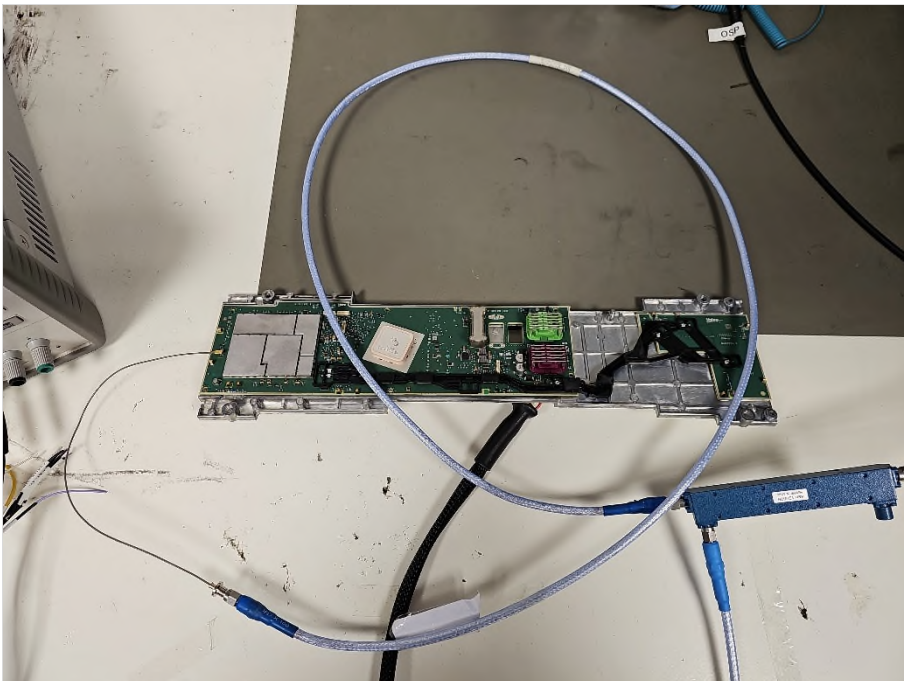
23-1-0014801T033_TR1-A103-R02

Number of pages:	7	Date of Report:	2024-Oct-17
Testing company:	cetecom advanced GmbH Untertuerkheimer Str. 6-10 66117 Saarbruecken GERMANY	Applicant:	VALEO Telematik und Akustik GmbH
Product:	Antenna and Remote Telematics Integrated System		
Model:	ARTEMIS-NAR-01		
FCC ID:	QWY-ARTEMIS-NAR01	IC:	6588A-ARTEMISNAR1
		PMN:	ARTEMIS-NAR-01
		HVIN:	ARTEMIS-NAR-01
		FVIN:	E20 R550
Testing has been carried out in accordance with:	FCC Regulations Title 47 CFR, Chapter I, Subchapter A Part 15, Subpart C Intentional Radiators; § 15.209 Radiated emission limits; general requirements Title 47 CFR, Chapter I, Subchapter B Part 22, Subpart H Cellular Radiotelephone Service Part 24, Subpart E Paging and Radiotelephone Service Part 27, Subpart C Miscellaneous Wireless Communications Services ISED-Regulations, Radio Standards Specification RSS-Gen, Issue 5 General Requirements for Compliance of Radio Apparatus RSS-132, Issue 4 Cellular Telephone Systems Operating in the Bands 824-849 MHz and 869-894 MHz RSS-133, Issue 7 2 GHz Personal Communications Services RSS-139, Issue 4 Advanced Wireless Services (AWS) Equipment Operating in the Bands 1710-1780 MHz and 2110-2180 MHz		

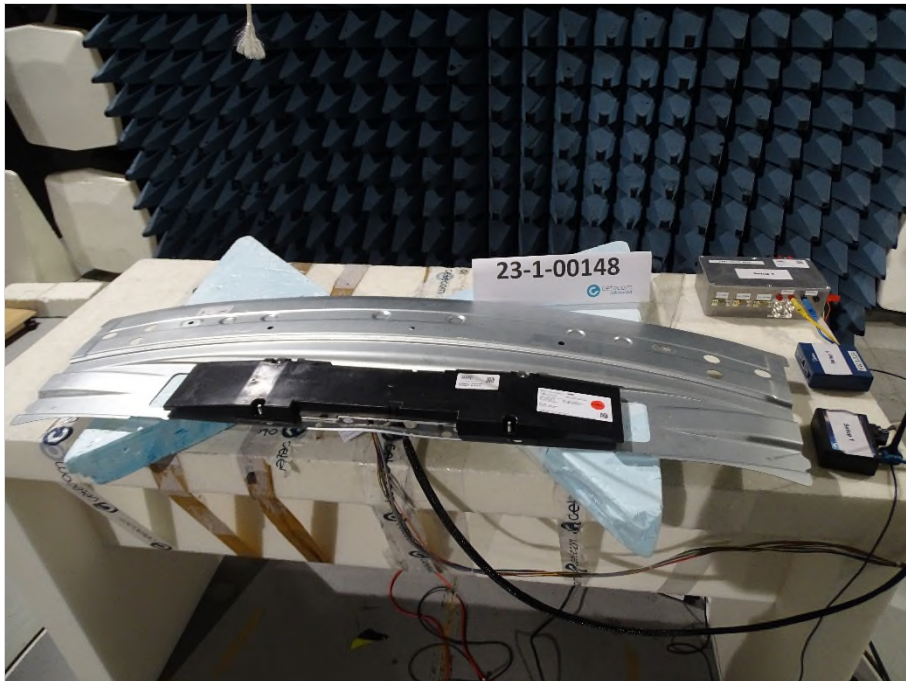
Test set up photographs (EUT/DUT)



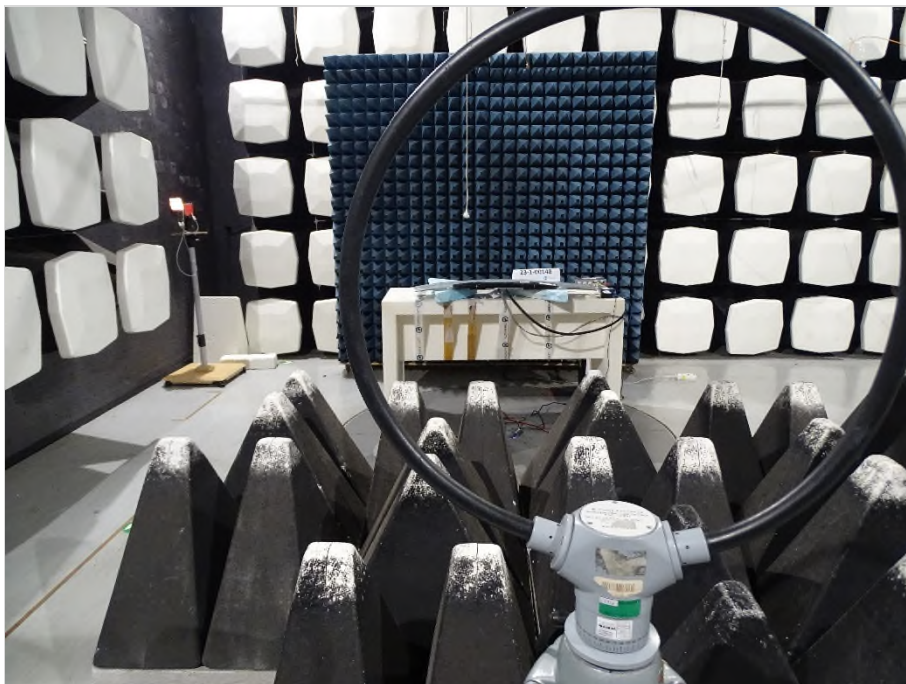
Photograph 1: EUT setup conducted measurement, overview



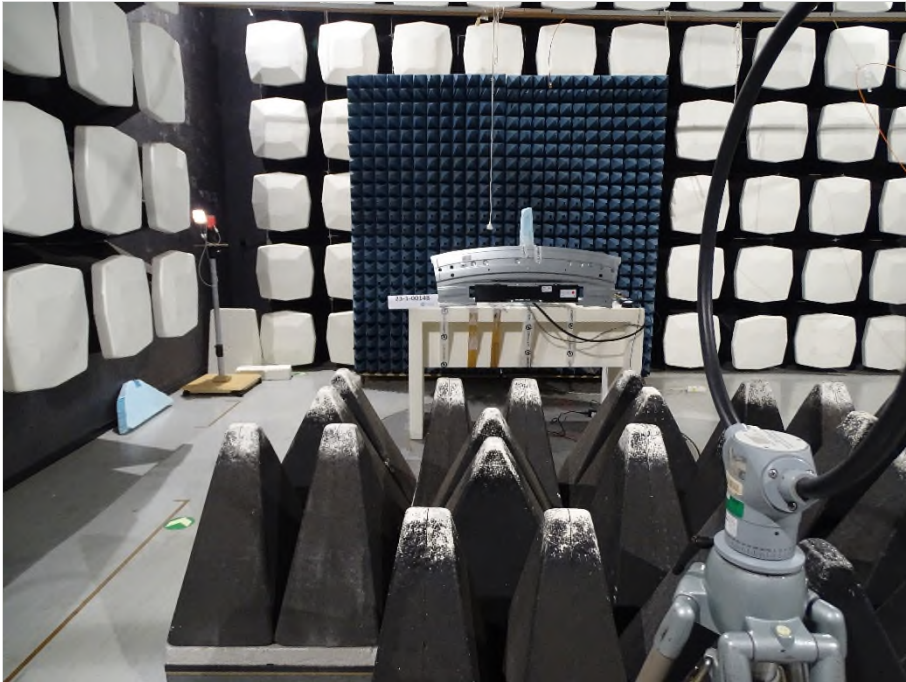
Photograph 2: EUT setup conducted measurement, close up view



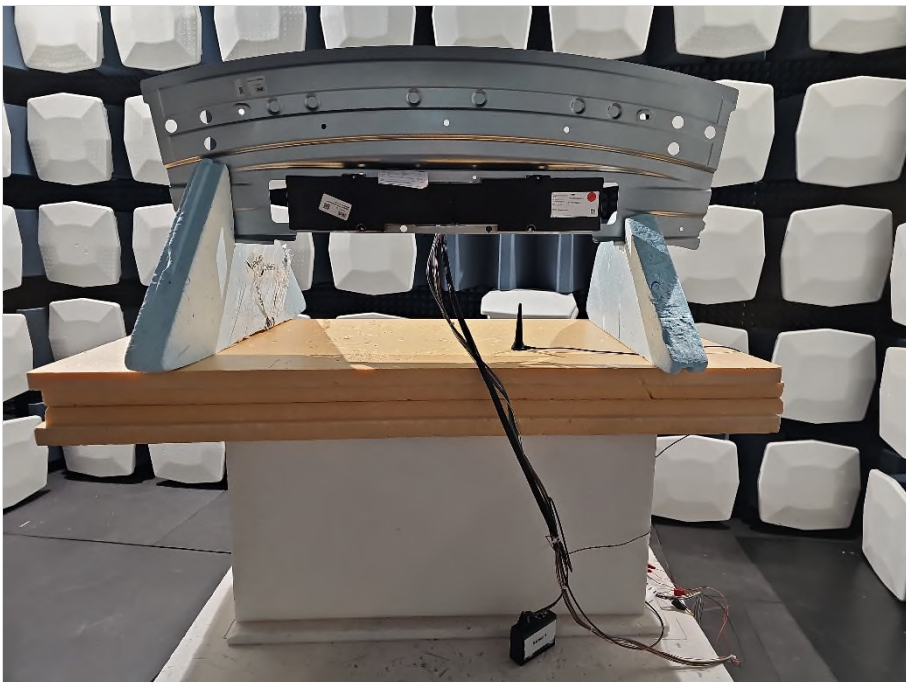
Photograph 3: EUT test setup in the semi anechoic chamber, close up view



Photograph 4: EUT test setup in the semi anechoic chamber, overview



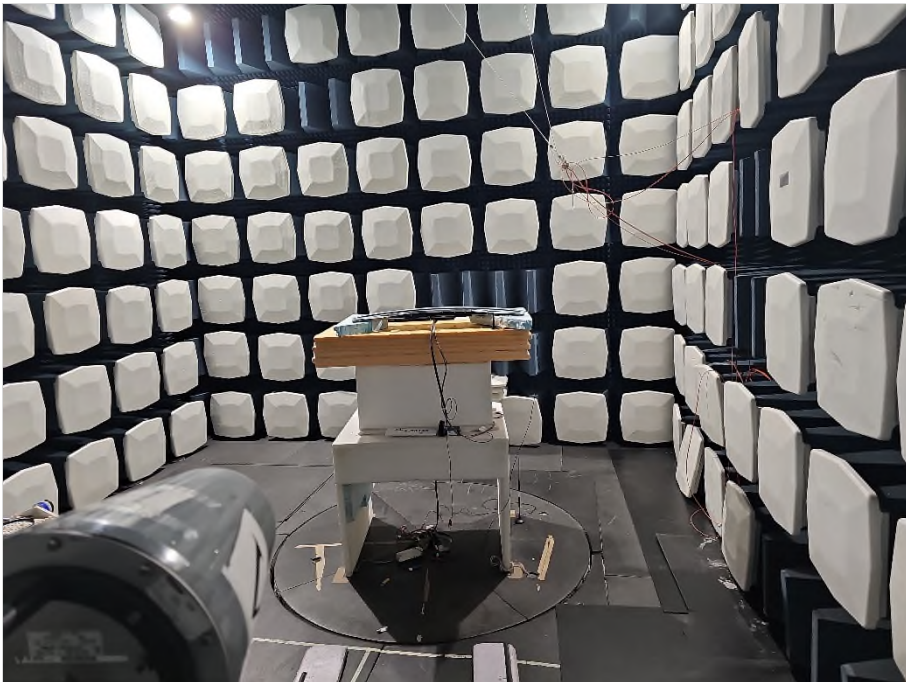
Photograph 5: EUT test setup in the semi anechoic chamber, overview



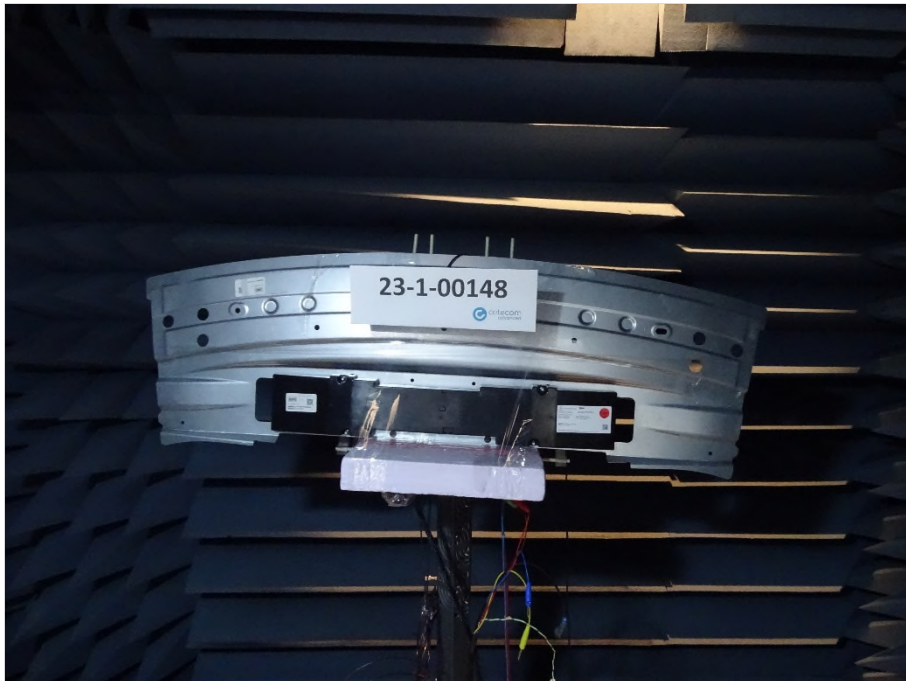
Photograph 6: EUT test setup in the fully anechoic chamber, close up view



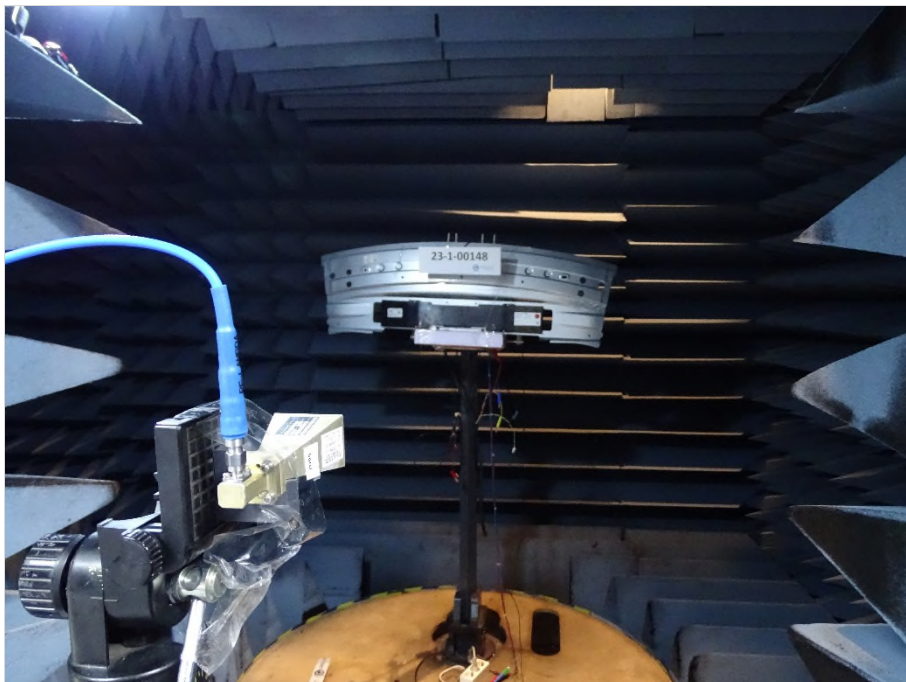
Photograph 7: EUT test setup in the fully anechoic chamber, overview



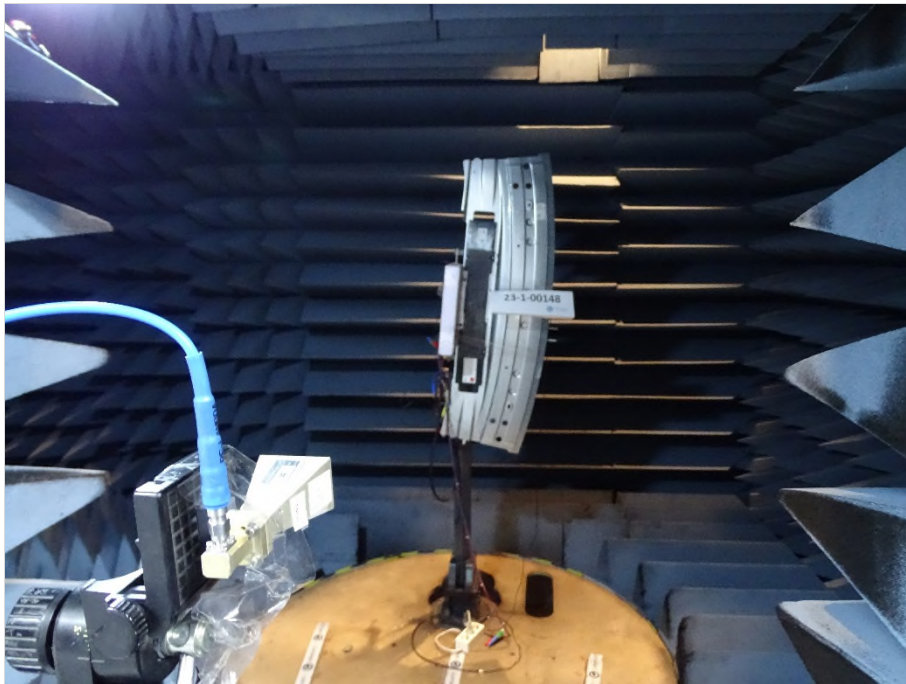
Photograph 8: EUT test setup in the fully anechoic chamber, overview



Photograph 9: EUT test setup in the fully anechoic chamber, overview



Photograph 10: EUT test setup in the fully anechoic chamber, overview



Photograph 11: EUT test setup in the fully anechoic chamber, overview

End Of Annex 4