

## 1. Introduction

wiREVO Stereo Headset series will lead you to the mobility and allows you freedom and there isn't any limitation and any disturbance. The main functions of wiREVO S300 are as follows;

- Wireless Stereo Headset
- Wireless Remote Controller
- Wireless Hands-free

Read this user manual carefully before using the stereo headset. Do not use this user manual in place of the other Bluetooth audio devices' user guide, which provides important safety and maintenance information.

### Bluetooth Wireless Technology

wiREVO S300 is specially designed for any compatible Bluetooth devices that support the following profiles. (Profile is a set of Bluetooth commands that the devices use to control the stereo headset)

- Advanced Audio Distribution profile
- Audio Video Remote Control profile
- Hands-free profile
- Headset profile

The Bluetooth technology makes it possible to connect compatible communication devices without using cables. The Bluetooth connection does not require that your Bluetooth audio device and the stereo headset are in line of sight, but both devices should be 10 meters of each other, although the connection can be subject to interference from obstructions such as walls or other electronic devices.

wiREVO S300 is compliant with and adopts the Bluetooth Specification 2.0. For more information on the compatibility between wiREVO S300 with other Bluetooth-enabled products, please check with your dealer.

wiREVO S300 has a perfect compatibility with wiREVO stereo dongle, D1000 that will turn your old-fashioned audio players to Bluetooth enabled ones.

### Limited Liability

Neither the Manufacturer, importers nor dealers is responsible for any accidental damage including bodily injury or any damage resulting from misuse or unsuitable operation by you. The information on this manual is prepared with the current stereo headset specifications. Hassnet is adding new features to the product and may persistently apply new technologies hereafter. All standards may be changed at any time without notice.

## 2. Guidelines for your safety

Before use, read the warnings and other information in this manual.

Please check for any information on RF exposure in usage of a Bluetooth stereo headset.

When your stereo headset is turned on, it transmits and receives radio frequency electromagnetic fields in the frequency range 2.402 ~ 2.480 GHz.

Your stereo headset is designed to operate in compliance with the RF exposure guidelines and limits that are set by national authorities and international health agencies when used with any compatible devices.

### [!] Drive safely

Using a mobile phone while driving creates a distraction to the driver which may increase the likelihood of an accident. When using the phone while driving, keep conversations short and do not make notes or read documents.

Before answering calls consider your circumstances. Pull off the road and park before making or answering calls when driving conditions require (e.g. bad weather, high traffic density, presence of children in the car, difficult junctions or maneuvers.)

**Remember, driving comes first, not the call! Abide by local laws.**

[!] Don't use the stereo headset during charging.

### [Stereo Headset]

- Do not touch your stereo headset and power plug with damp hands.
- Do not kink or crease the power cable or place heavy objects on the power cable.
- Firmly plug the adapter into the wall socket.
- Unplug the adapter during electrical storms.
- Do not overload a single power circuit.
- Use only the supplied adapter.
- Unplug adapter when it's not in use.
- Immediately power off the stereo headset and unplug the adapter if water or other liquids are present.
- Immediately power off the stereo headset and unplug the AC adapter if smoke or odors emits from the stereo headset or adapter.
  
- Keep the stereo headset dry. Humidity and all types of liquids or moisture can cause harmful interface with electronic circuits.
- Do not place heavy object on the device.
- Do not use harsh chemicals, cleaning solvents, water or strong detergents to clean the stereo headset. To clean external surfaces, use a clean dampened cloth.
- Do not use excessive force on the buttons or attempt to disassemble the device.
- Do not drop or subject the device to impact.
- Do not paint the stereo headset. Paint can clog the moving parts and prevent proper operation.
- Keep the stereo headset away from strong magnets.
- Do not disassemble or modify.
- Do not dry the stereo headset with heater or microwave.
- Keep all accessories out of the reach of small children.
  
- Reduce volume while walking, especially at pedestrian crosswalk.
- Do not use earphones at high volume.
- Reduce volume or stop using the stereo headset if you experience a ringing in your ears.
- Do not use at high volume for continuous listening.
- Keep earphone cords/necklace under control to avoid getting caught on various objects.

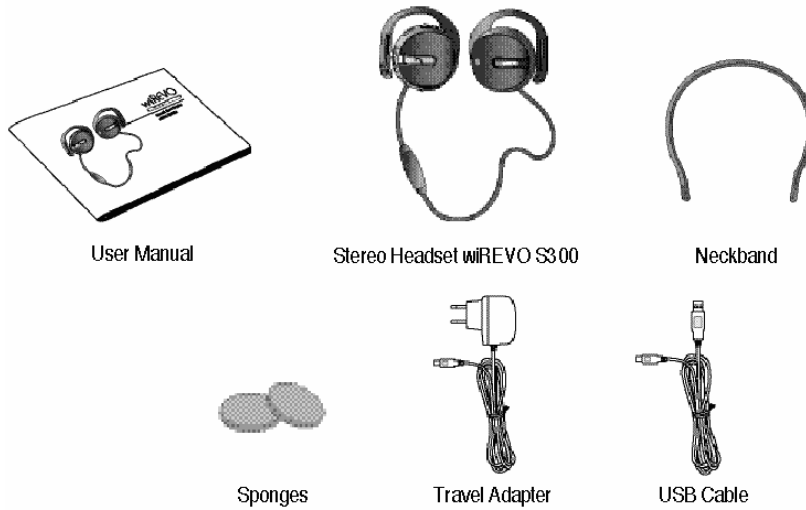
**[Battery]**

Your stereo headset is equipped with a high-performance Lithium Polymer battery. Observe the maintenance guidelines and your battery should give you a long service life.

- Use batteries and adapters only provided and approved by Hassnet.
- The batteries are consumables and will eventually wear out.
- Avoid charging in strong heat or extreme cold. Ambient room temperature is preferable. The battery has its optimum performance at an ambient temperature (+5 °C to +50 °C).

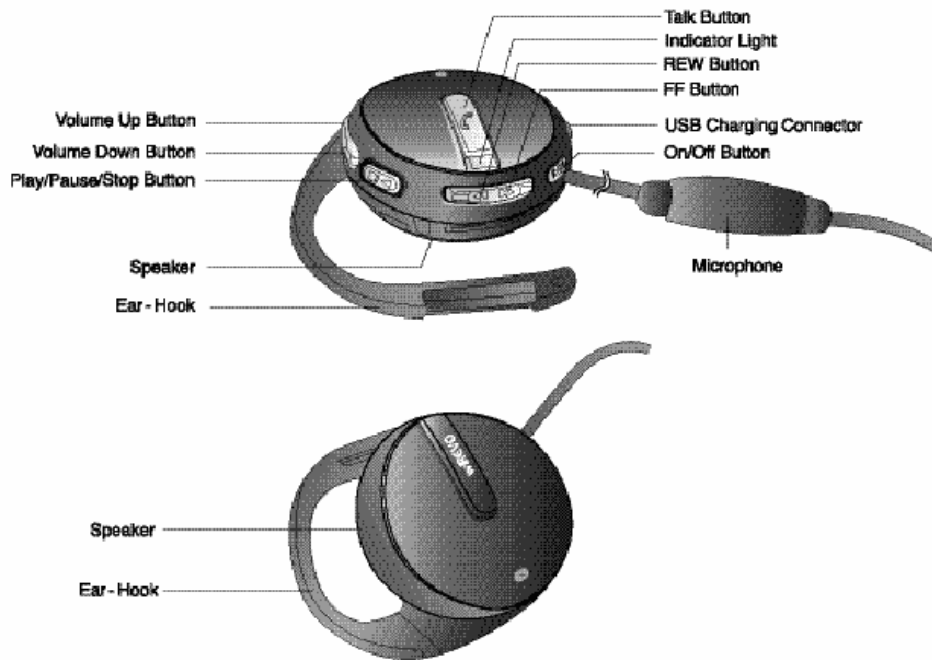
# Before Using

## 1. What's in the box?



- Accessories are subject to change without notice and may vary from image shown.

## 2. Features at a glance

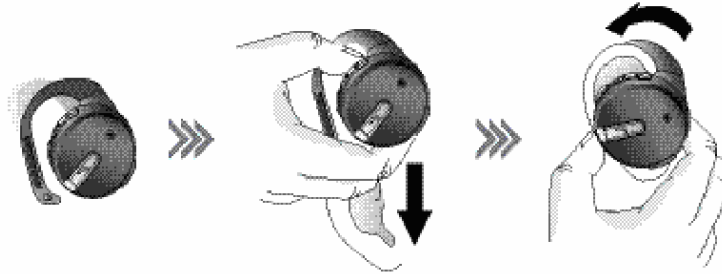


Front

- Actual stereo headset may vary slightly from images shown.

### 3. Putting on the stereo headset

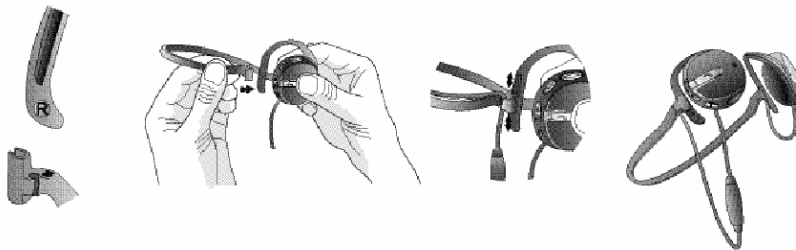
Check the RIGHT/LEFT sign at the bottom of the ear-hook to put on the stereo headset properly.



- Slide the stereo headset onto your ear while opening wide the ear-hook to be easy to wear on. Move the ear-hook to place the stereo headset to the most comfortable position.
- Grip the stereo headset body and jostle it to back of the ear for it to be fixed well.

### 4. Fixing a neckband

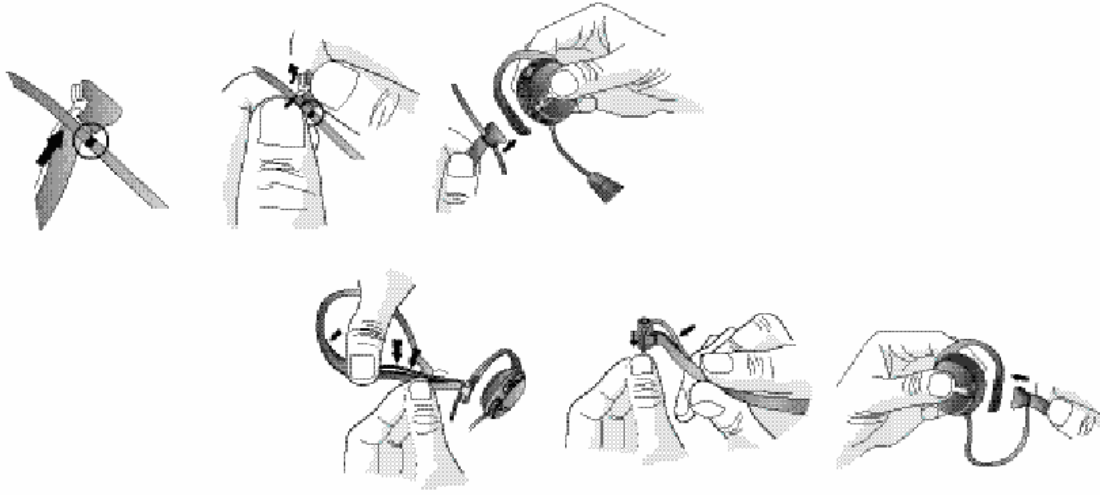
Check the RIGHT/LEFT sign at the holder of the neckband to put on the ear-hook of the stereo headset.



- Hold the neckband and push it into the direction of arrow.
- Rotate it to the direction of arrow.

## 5. Putting on the stereo headset

Check the RIGHT/LEFT sign at the bottom of the ear-hook to put on the stereo headset properly.



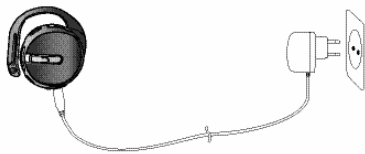
- Check the black mark on the cord below the microphone to insert the cord into the neckband.
- Place the black mark at the below of Right-side hook as picture.
- Push the cord into the hook and push out the hook as direction of arrow.
- Fix the neckband to the Right-side ear-hook as direction of arrow.
- Insert the cord into the neckband as picture
- Insert the cord into the Left-side hook.
- Fix the neckband to the Left-side ear-hook as direction of arrow.

## 6. Charging

Before using the stereo headset for the first time, make sure the stereo headset is fully charged. Connect the adapter or USB cable to the stereo headset and the indicator light will be purple. The indicator light will be blue when the battery is fully charged.

### [Charging with Adapter]

The indicator light will be blue when the battery is fully charged.



### [Charging with USB Cable]

The indicator light will be blue when the battery is fully charged.



### [!] Note

Don't use the stereo headset during charging.

**[Low battery indication]**

- When the battery needs to be recharged, high warning tones beep and the red indicator light flashes 3 times every 10 seconds.
- As soon as you detect the low battery you should charge the stereo headset.
- Charge the battery until the indicator light becomes blue.

**[Check battery level]**

- Press and hold Volume Up ( ) button and Volume Down ( ) button together.
- The red indicator light flashes from 1 to 4 times according to the remaining battery amount.
- The more it flashes, the more battery is remained.

|                     |                          |
|---------------------|--------------------------|
| Low battery warning | Approx. under 5% charged |
| Flashes once        | Approx. 5~20% charged    |
| Flashes twice       | Approx. 20~50% charged   |
| Flashes three times | Approx. 50~80% charged   |
| Flashes four times  | Approx. 80~100% charged  |

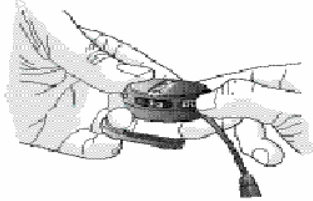
**[Charging & operation time]**

|                |              |           |                |  |
|----------------|--------------|-----------|----------------|--|
| Charging Time  | With Adapter |           | With USB cable |  |
|                | 2.5 hrs      |           | 3hrs           |  |
| Operation Time | Standby Time | Talk Time | Play Time      |  |
|                | 180 hrs      | 11 hrs    | 8 hrs          |  |

## Before using the stereo headset

### 1. Turning the stereo headset ON/OFF

- To turn on the stereo headset, push the Power switch ( ) to the direction for 'ON'.



- To turn off the stereo headset, push the Power switch ( ) to the direction for 'OFF'.



### 2. Paring with a Bluetooth audio device

- You need to pair the stereo headset with the Bluetooth audio device that you intend to use it with. This process is to set-up a unique wireless link between two devices.
- Once you have paired your stereo headset with the Bluetooth audio device, you don't need to pair it again if you don't delete all registered data from your device.

#### [When you use the stereo headset for the first time]

- It's better to try to pair your stereo headset with the Bluetooth audio device close-by.
  1. If the stereo headset is turned on for the first time, it will automatically be ready for pairing. In this case, blue and red indicator lights flash in turn with one another if the stereo headset is ready to be paired. [Pairable mode]
  2. Prepare your Bluetooth audio device according to the device's user manual on pairing.
  3. Continue following the instructions in the device's user manual.
  4. The default passkey of the stereo headset is **[0000]**.
  5. When pairing has been completed, the blue indicator light will flash per 3 seconds. [Connectable mode]

**! Note** With some Bluetooth audio devices, the stereo headset can be connected automatically after pairing. [Connected mode] In this case, the indicator light will flash per 6 seconds.

**! Note** In pairable mode, if the stereo headset has not been paired for 3 minutes, the indicator light will flash per 3 second. In that case, you need to turn the stereo headset off and on again to try pairing from the first step.

#### [When you want to use it with another Bluetooth audio device]

- When you want to use your stereo headset with another device that isn't the device that you paired your stereo headset with, you need to pair it again.
  1. Switch ON ( ) with pressing Talk ( ) button. The blue and red indicator lights flash in turn with one another if the stereo headset is ready to be paired. [Pairable mode]



2. The following steps are the same with **[When you use the stereo headset for the first time]**.

### 3. Deleting the paired devices' information

- You can delete the paired devices' information.
  - Switch ON ( ) with pressing Talk ( ) button and Play/Pause/Stop ( ) button together.

### 4. Connecting with a Bluetooth audio device

- To connect the stereo headset with your Bluetooth audio device, you need to pair the two devices first.
- With some Bluetooth audio devices, the stereo headset can be connected automatically after pairing without following additional process.

1. Turn on by switching ON ( ) and setup it as connectable status.  
The blue indicator light will flash per 3 second [Connectable mode].
2. Connect the stereo headset with the device by any method below.

#### **[Connect by a Bluetooth audio device]**

- Connect following the instructions in the Bluetooth audio device's user manual.

#### **[Connect by the stereo headset]**

- **To use Music Play service**, press Play/Pause/Stop ( ) button.  
In this case, only Music Play service is connected.
- **To use Hands-free service**, press Talk ( ) button.  
In this case, only Hands-free service is connected.
- **To use Music Play service and Hands-free service at the same time**, press and hold Play/Pause/Stop ( ) button for 2 seconds.

3. When the connection is completed, the blue indicator light flashes per 6 seconds [Connected mode] and the blue indicator light will not flash during the stereo headset is doing an actual work such as calling, playing, etc. [Active mode]

**[!] Note** Some Bluetooth audio devices may not accept the connection from the stereo headset. Please check the user manual of your Bluetooth audio device.

**[!] Note** This stereo headset supports A2DP, AVRCP, HSP and HFP. From a Bluetooth audio device you can search the services of this stereo headset and select the service to be connected. The searching, selecting and connecting process are dependent on your Bluetooth audio devices.

- A2DP: Advanced Audio Distribution Profile
- AVRCP: Audio Video Remote Control Profile
- HSP: Headset Profile
- HFP: Hands-free Profile

(Profile is a set of Bluetooth commands that the devices use to control the stereo headset)

### 5. Cutting the connection

- Turn off the stereo headset by switching OFF ( ) or disconnect by the Bluetooth audio device. In this case, the blue indicator light will flash per 3 seconds. [Connectable mode]

**[!] Note**

| Indicator light status   |  |
|--|--|
| On pairable state <b>[Pairable mode]</b>   | The blue and red indicator lights flash in turn with one another |
| When waiting for connection from the peer Bluetooth device <b>[Connectable mode]</b> | The blue indicator light flashes per 3 seconds                   |
| On connected state <b>[Connected mode]</b>   | The blue indicator light flashes per 6 seconds                   |
| During calling or playing <b>[active mode]</b>                                       | Not flash  |

**6. Pairing and connecting with a Bluetooth mobile phone & a Bluetooth audio device simultaneously**

1. Pair and connect the stereo headset with a Bluetooth mobile phone for the Hands-free function followed by the article **2. Pairing with a Bluetooth audio device and 4. Connecting with a Bluetooth audio device.**
2. Turn off the stereo headset.
3. Turn on the stereo headset with pressing Talk ( ) button. The stereo headset is Pairable mode.
4. Pair with a Bluetooth audio device followed by the user manual of the device.
5. Enjoy the music from your audio device wirelessly.
6. When the call is receiving, you can press Talk ( ) button to answer it.
7. After ending the call, the music is resumed.

# Using the stereo headset

## 1. Playing music

### PLAY

- Press Play/Pause/Stop ( ) button while being connected to your Bluetooth audio device.
- Press Play/Pause/Stop ( ) button while music is stopped.
- The music automatically comes back after you ended a call if you answered a call while listening to music.

### PAUSE

- Press Play/Pause/Stop ( ) button while listening to music.
- Press Play/Pause/Stop ( ) button again to listen to the song from the paused part.

### STOP

- Press and hold Play/Pause/Stop ( ) button for 2 seconds while listening to music.
- Press Play/Pause/Stop ( ) button again to listen to the song from the very first part.

**! Note** This is dependent on the Bluetooth audio device's function and works only when the Bluetooth audio device supports this function.

### Play the previous/next song

- Press FF ( ) button while music is on to play the next song.
- Press REW ( ) button while music is on to play the previous song.

### Rewinding/ Fast forwarding

- Press and hold FF ( ) button while music is on for fast forwarding.
- Press and hold REW ( ) button while music is on for rewinding.

**! Note** This is dependent on the Bluetooth audio device's function and works only when the Bluetooth audio device supports this function.

### Adjusting Volume

- Press Volume Up ( ) button or Volume Down ( ) button to adjust the speaker volume while listening to music.

**! Note** Play/Pause/Stop, Forward/Backward and Fast Forward/Rewind operations are based on AVRCP Bluetooth profile. If these functions do not work correctly, check whether your Bluetooth device supports AVRCP as well as A2DP or not.

### Changing the Equalizer mode

- Press and hold Volume Up ( ) button and Volume Down ( ) button together to change the Equalizer mode while listening to music.  
(Normal → Jazz → Pop → Classic → Rock)
- Whenever you change the Equalizer mode, you will hear a short beep but for Normal mode there will be double short beeps.

## 2. Phone call control while listening to music

- During the music playing, when a call is received, the music will be paused automatically and you will hear the ringing from the speaker.

### Answering calls while listening to music

- To accept the call, press Talk ( ) button.

### Rejecting calls while listening to music

- To reject the call, press and hold Talk ( ) button for 2 seconds.

**! Note** Available only when your stereo headset and the mobile phone are connected as Hands-free Bluetooth profile and the mobile phone supports the incoming call rejecting function.

### Making calls while listening to music

- Press and Hold Play/Pause/Stop ( ) button for 2 seconds to stop the music.
- Make a call using the methods described in **4. Making calls**.

**! Note** This is dependent on the Bluetooth audio device's function and works only when the Bluetooth audio device supports this function.

## 3. Answering calls

- When a call is received you will hear the ringing through the stereo headset.

### Answering calls

- Press the Talk ( ) button to accept the call.
- To end the call, press Talk ( ) button.

### Rejecting calls

- Press and hold Talk ( ) button for 2 seconds.

**! Note** Available only when your stereo headset and the mobile phone are connected as Hands-free Bluetooth profile and the mobile phone supports the incoming call rejecting function.

### Answering the 2nd Call

- While on the line, if there's the 2nd call, you can hear a beep.
- Press and hold the Talk ( ) button for 2 seconds to answer the call.
- You can answer the 1st call – held call – by pressing and holding Talk ( ) button for 2 seconds again.

**! Note** It is dependent on the mobile phone's function and is possible when the mobile phone supports Hands-free profile.

## 4. Making calls

- Make sure that your stereo headset is connected with your mobile phone.

### Using a mobile phone

- Using the phone's keypad, dial the required number.
- Send the call from the phone (Phone initiates the call).
- The call will automatically transfer to the stereo headset. But for some mobile phones, you must press Talk ( ) button to make the call transfer to the stereo headset. Please refer to your phone's user guide.

### Using redialing the last call

- With your stereo headset, you can re-dial the last call dialed or received.
- Press Talk ( ) button and you can see the latest call numbers on the mobile phone.
- Press Talk ( ) button again.
- After you hear the short beep, you will hear the dialing tones from speaker.

**! Note** Some mobile phone may re-dial the last call by pressing Talk ( ) button once.

### Using voice dialing

- To make calls using voice dialing with your stereo headset, your mobile phone needs to support voice dialing and the feature must be activated.
- Press and hold Talk ( ) button for 2 seconds and you can hear a short beep. Voice dial as you normally would.

**! Note** It is dependent on the mobile phone's function and is possible when the mobile phone supports Hands-free profile.

## 5. Transferring calls

- **To the Stereo headset**  
Press Talk ( ) button during a phone call on the mobile phone.
- **To a Mobile Phone**  
Depends on the mobile phone's function. Refer to the user manual of a mobile phone.

## 6. Adjusting the volume

- Press Volume Up ( ) button or Volume Down ( ) button to adjust the speaker volume during a phone call.

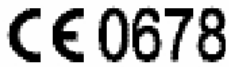
## Specification & Certifications

### 1. Brief Specification

|                           |   |
|---------------------------|---|
| Bluetooth Compliance      | Bluetooth 2.0 with A2DP, AVRCP, HFP and HSP |
| Frequency Range           | 2.402 ~ 2.480 GHz                           |
| Transmission output power | 0.25 ~ 2.5mW                                |
| Maximum Cordless Distance | 30 feet (10 meters)                         |
| Dimension                 | 37.8pie X 21.8mm                            |
| Weight                    | 38.38g                                      |
| Operating Temperature     | -10 ~ 50 °C                                 |
| Relative Humidity         | 0 ~ 95%                                     |
| Standby Time              | 180 hours                                   |
| Talk Time                 | 11 hours                                    |
| Play Time                 | 8 hours                                     |
| Battery Type              | Rechargeable Lithium Polymer                |
| Adapter Rated input       | AC 100 ~ 240V, 50/60Hz                      |
| Adapter Rated output      | DC 5.0 ~ 5.3V, 700mA                        |

- Standby time, Talk time and Play time are dependent on the connected devices.

## 2. Certifications



This Product is CE marked according to the provisions of the R&TTE Directive 1995/05/EC. Hereby, Hassnet, declares that this product is in compliance with the essential requirements and other relevant provisions of Directive 1995/05/EC. For more information please consult <http://www.hassnet.com> and <http://www.wirevo.com>.



This device complies with part 15 of the FCC Rules. Operation is subject to the following two conditions:

(1) This device may not cause harmful interference, and (2) this device must accept any interference received, including interference that may cause undesired operation.

This equipment has been tested and found to comply with the limits for a Class B digital device, pursuant to part 15 of the FCC Rules. These limits are designed to provide reasonable protection against harmful interference in a residential installation. This equipment generates uses and can radiate radio frequency energy and, if not installed and used in accordance with the instructions, may cause harmful interference to radio communications. However, there is no guarantee that interference will not occur in a particular installation. If this equipment does cause harmful interference to radio or television reception, which can be determined by turning the equipment off and on, the user is encouraged to try to correct the interference by one or more of the following measures:

- Reorient or relocate the receiving antenna
- Increase the separation between the equipment and receiver
- Connect the equipment into an outlet on a circuit different from that to which the receiver is connected
- Consult the dealer or an experienced radio/TV technician for help

The device and its antenna must not be co-located or operating in conjunction with any other antenna or transmitter.

Users are not permitted to make changes or modify the device in any way. Changes or modifications not expressly approved by Hassnet will void the user's authority to operate the equipment.



The Bluetooth® word mark and logos are owned by the Bluetooth SIG, Inc. and any use of such marks by Hassnet is under license. Other trademarks and trade names are those of their respective owners.



This Product is WEEE marked according to the provisions of the Directive 2002/96/EC. Dispose of the product according to local standards and regulations.

## Thank You.

---

To receive sales literature and technical assistance, please contact Hassnet, Inc.

Contact: [sales@hassnet.com](mailto:sales@hassnet.com)  
[support@hassnet.com](mailto:support@hassnet.com)

### **HASSNET, INC.**

6fl. Techno Complex Bldg., Korea Univ. 126-16, Anam-dong 5-Ka, Seongbuk-Ku,  
Seoul, Korea 136-701

Visit our Web sites at [www.hassnet.com](http://www.hassnet.com), [www.wirevo.com](http://www.wirevo.com)

Printed in Korea