

# R/C TUGBOAT INSTRUCTION MANUAL



E-MAIL ADDRESS: info@hobbyengine.com.hk

# R/C TUGBOAT INSTRUCTION MANUAL

ITEM NO. 0901

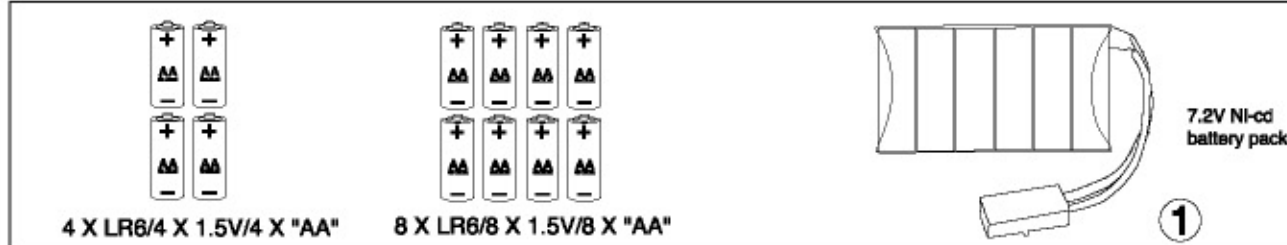
In order to get the best performance of your tugboat, please read carefully this instruction before use.

## WARNING

Not suitable for children under 3 years old, small parts can be swallowed. All materials for fastening or packing purposes are not part of the toy and should be discarded for children's safety. The model is to be operated in water only when fully assembled in accordance with the instruction.

## PREPARATION BEFORE USE:

- A) Make sure you have the following necessities (Fig.1):  
1) 8 x "AA" size alkaline batteries for transmitter.  
2) 4 x "AA" size alkaline batteries for tugboat.  
3) 7.2v Ni-cd battery pack for tugboat.

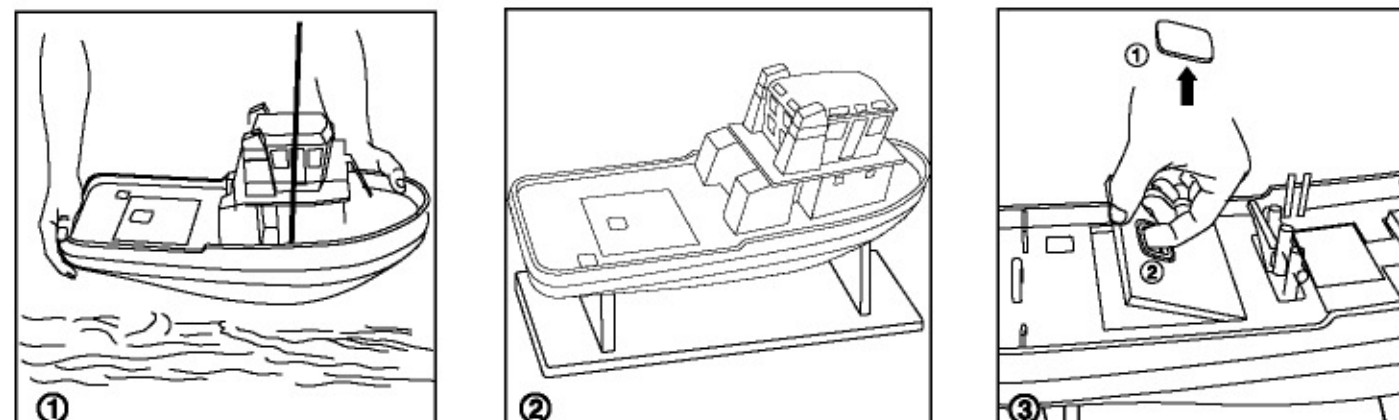


- B) For Ni-cd Battery (1) First charging time: 7 hours (2) Normal charging time: 5 hours (3) Endurance: 30 minutes

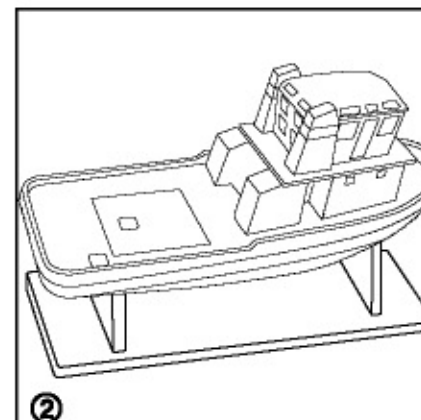
C) Follow step by step from figure 2 to figure 8.

## IMPORTANT NOTE:

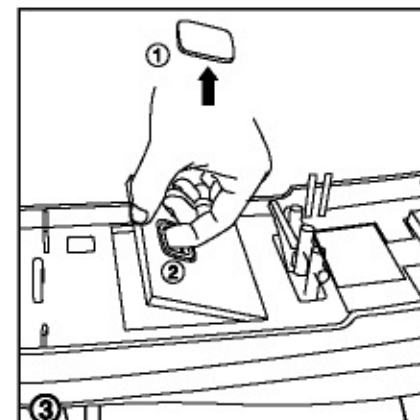
Non-rechargeable batteries are not to be recharged. Rechargeable batteries are to be removed from the toy before being charged. Rechargeable batteries are only to be charged under adult supervision. Different types or new and used batteries are not mixed. Only batteries of the same or equivalent type as recommended are used. Batteries are inserted with correct polarity. Exhausted batteries are to be removed from the toy. The supply terminals are not to be shorted-circuit. Regular check on cord, plug, enclosure and other parts, in case of damage, toys must not be used with transformer or battery charger until damage has been repaired. If the cruiser is slow down, change the battery to avoid the overloading of the motor and accessory parts. Do not touch the motor, it is very hot after operation. Play the tugboat in a pool or pond larger than 20m x 20m. Otherwise it is hard to control to control it and may be easy to cause damage.



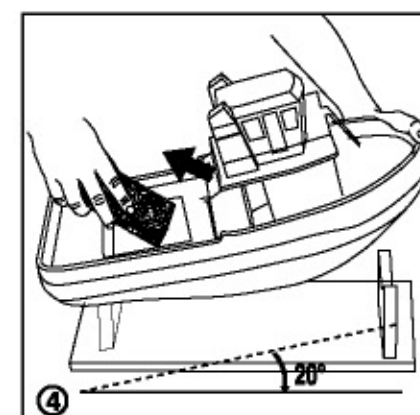
After operate the boat, please hold it horizontally to prevent the water flowing inside it.



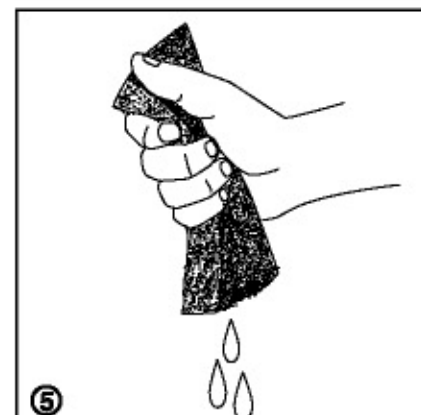
Put the boat on the rack and clean the body with a piece of cloth.



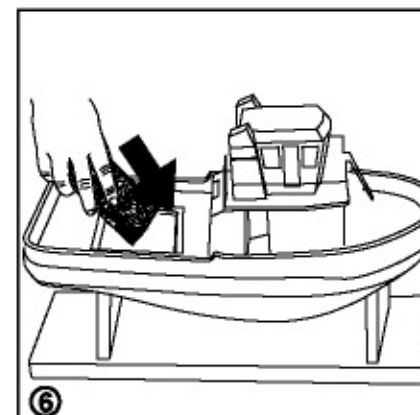
Then remove the rubber cover and open the deck.



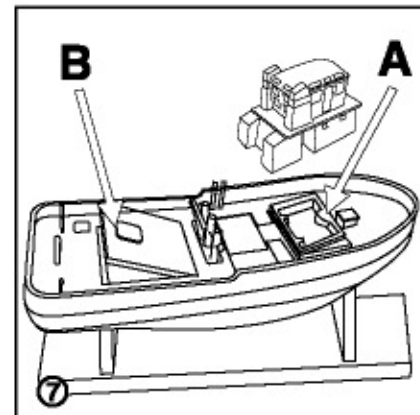
Pick out the sponge.



Dry the sponge.



Dry the inside by the sponge, then put the sponge back into the boat after the sponge is completely dried.



If the boat will idle for a long time please do not lock the battery cover (A) & the deck (B). It prevents deform of the foam around the cover and maintain their water resistant function.

FOC NOTE:  
THE ANTENNA PROVIDED IS A UNIQUE ANTENNA. BY INSTALLATION OF UNAUTHORIZED ANTENNA TO THIS EQUIPMENT SUCH UNAUTHORIZED INSTALLATION COULD VOID THE USER'S AUTHORITY TO OPERATE THE EQUIPMENT.  
THE MANUFACTURER IS NOT RESPONSIBLE FOR ANY RADIO OR TV INTERFERENCE CAUSED BY UNAUTHORIZED MODIFICATIONS TO THIS EQUIPMENT. SUCH MODIFICATIONS COULD VOID THE USER'S AUTHORITY TO OPERATE THE EQUIPMENT.  
IF YOU FIND ANY FUNCTIONAL PROBLEMS IN OPERATING THIS TOY, PLEASE READ CAREFULLY THE INSTRUCTION SHEETS AND/OR CALL US AT THE FOLLOWING ADDRESS:  
info@hobbyengine.com.hk

## CAUTIONS FOR SAFETY

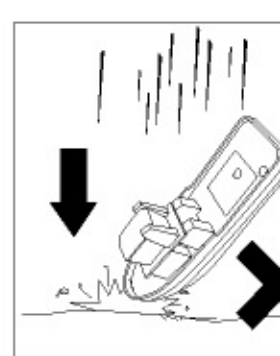
Do not sail the boat beyond 400 feet/120 meters from yourself. Do not operate this boat in sea water for best performance.

## Note:

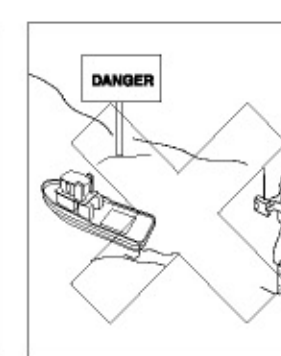
- 1) Make sure the water surface within control range is clear of plant, rubbish ... etc. Otherwise they may jam the propeller and cause damage to the internal parts.  
2) Do not run out of the 120 meters maximum control range. Otherwise the boat may lose control and runaway.  
3) To prevent a runaway R/C Mode switch on the transmitter before connecting a battery to a R/C model receiver. Always switch on the power of the transmitter first and then switch on the receiver.  
4) To avoid a runaway R/C model, always switch off the boat and disconnect the battery before switching off the transmitter.



Do not operate this product under windy and stormy weather.



Do not drop this product onto the ground.



Do not operate this product in prohibited areas.



Never swim to retrieve your tugboat.



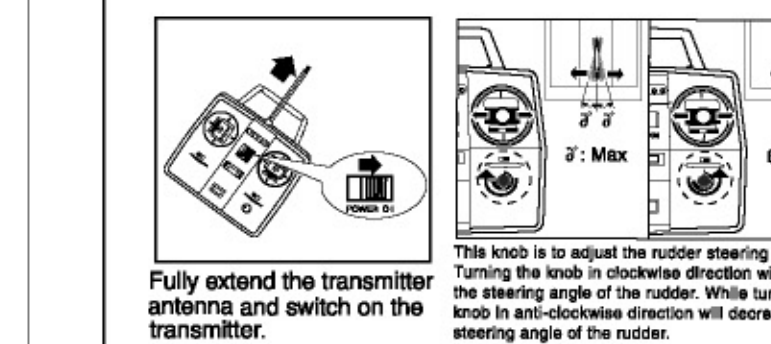
Do not sail your tugboat in dirty and jammed water.



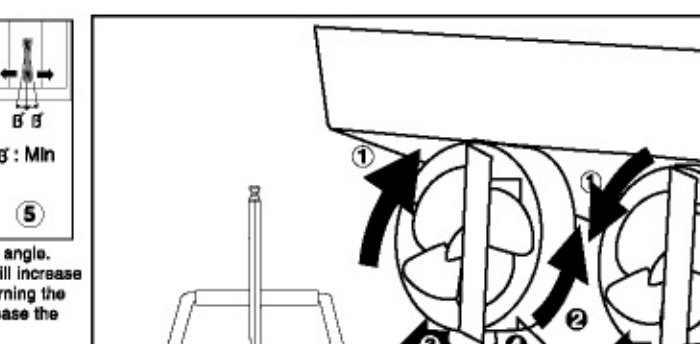
Do not try to crash your tugboat to any object in the water.

## BE READY FOR SAILING

In order to avoid radio interferences to your product, before sailing, ask your vicinity to see if they are running the same frequency as yours.

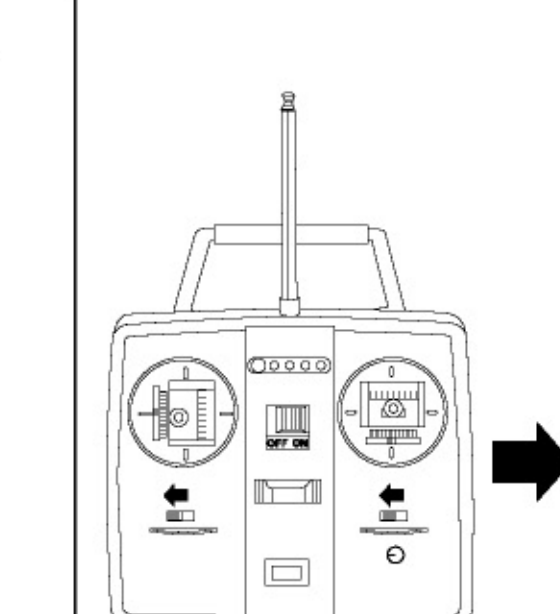


Switch on the receiver in the model and close the battery cover.

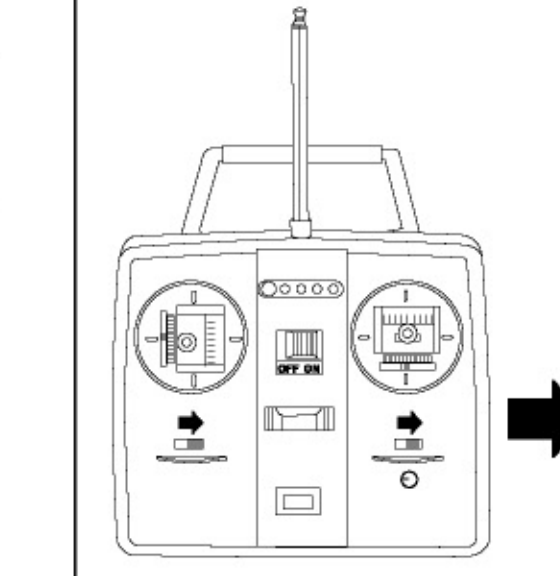


Check whether the propeller and the rudder's turning direction match with the transmitter's input.

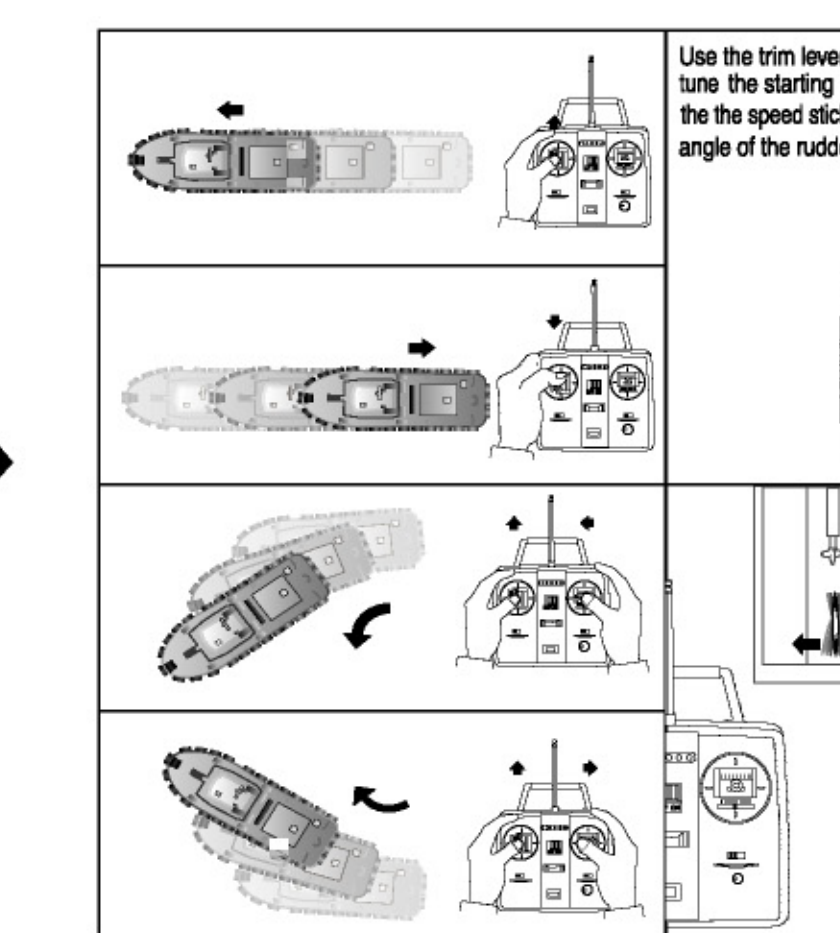
## CONTROL INSTRUCTION FOR A VOYAGE



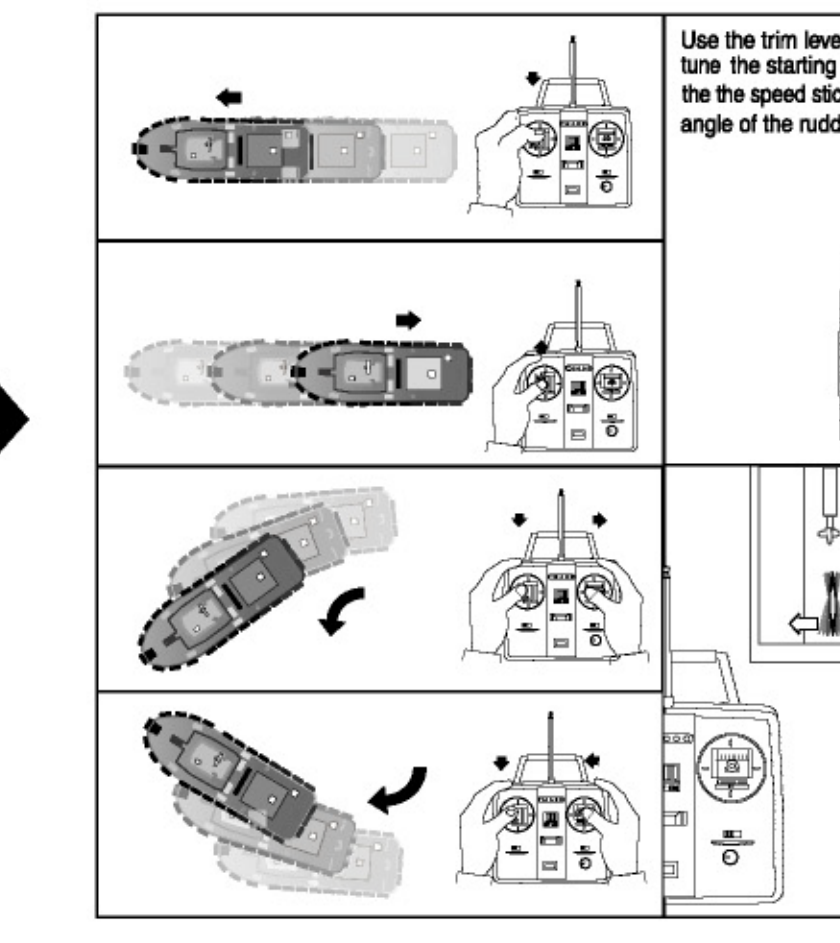
After pushing the reverse buttons to the left, the functions of the control sticks will be as the right figures



After pushing the reverse buttons to the right, the functions of the control sticks will be as the right figures



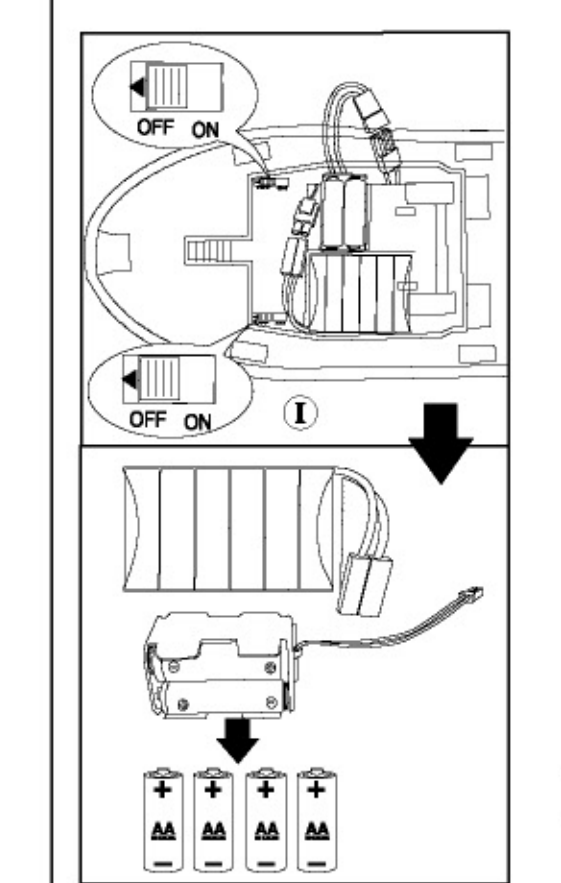
Use the trim lever to fine tune the starting position for the speed stick and the angle of the rudder



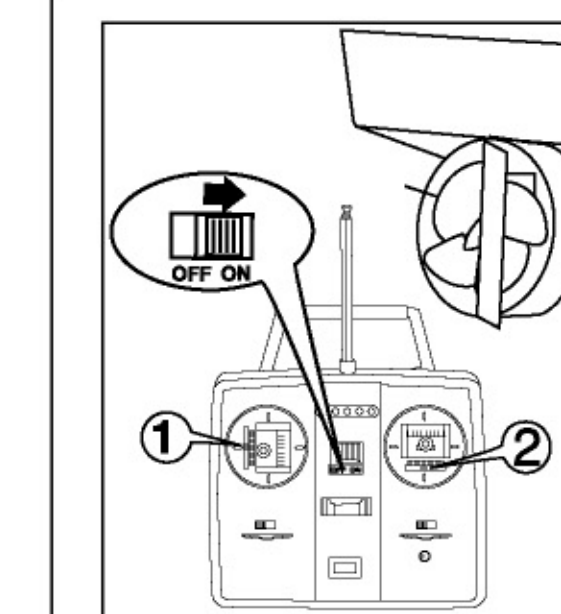
Use the trim lever to fine tune the starting position for the speed stick and the angle of the rudder

## IMPORTANT NOTES:

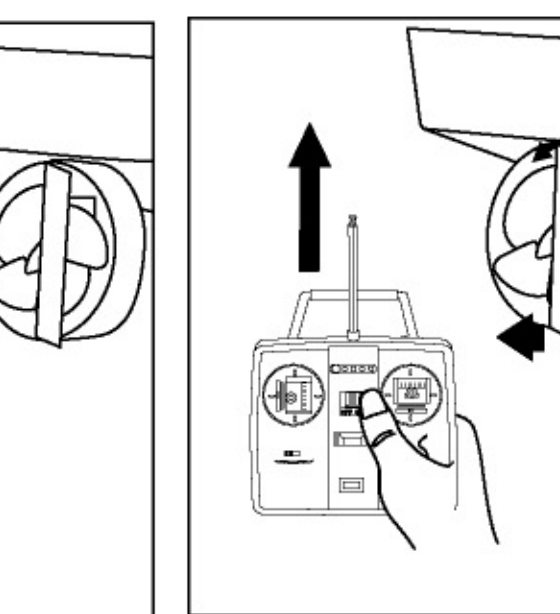
Turn off the switch of the boat before trying to clean things attached to the propeller.



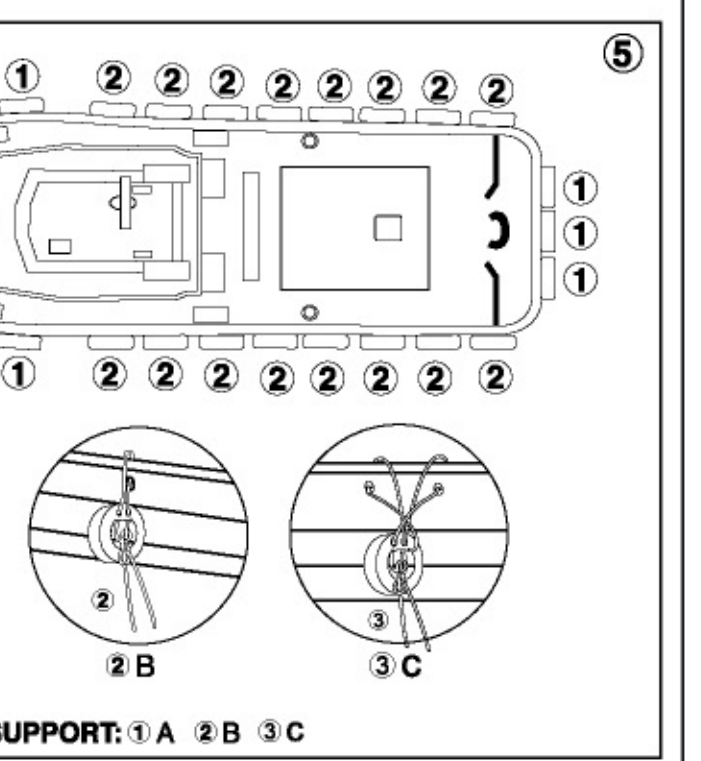
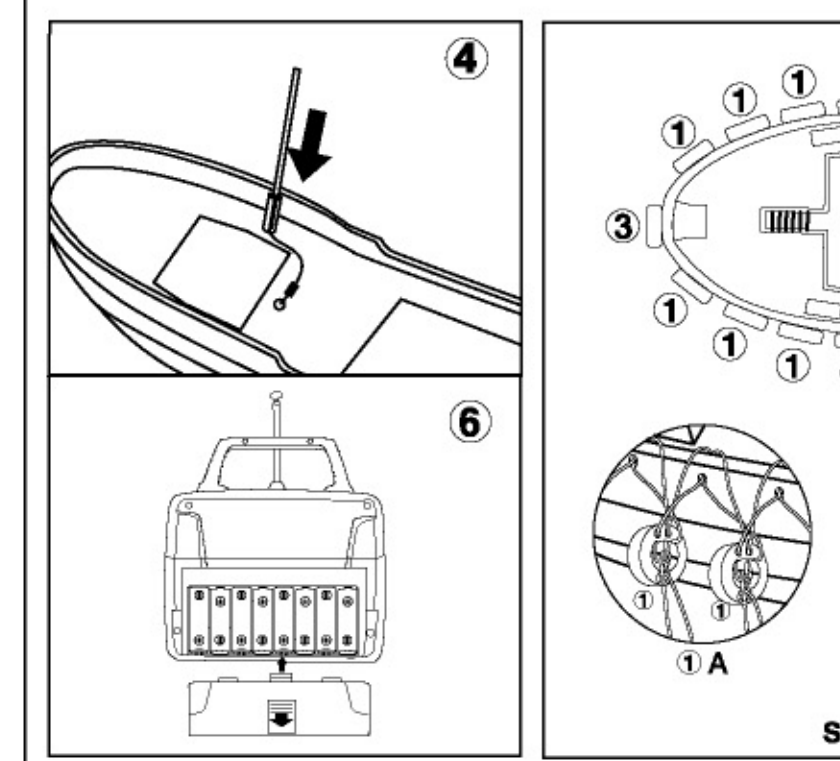
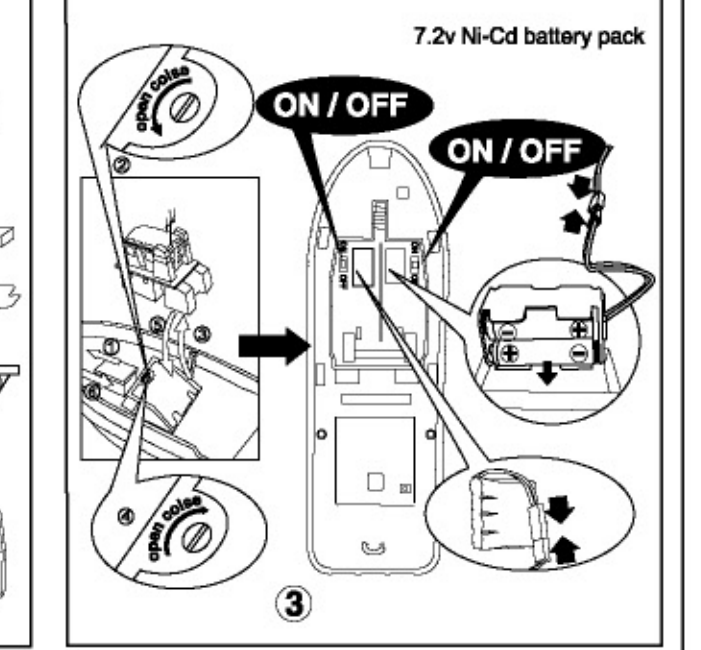
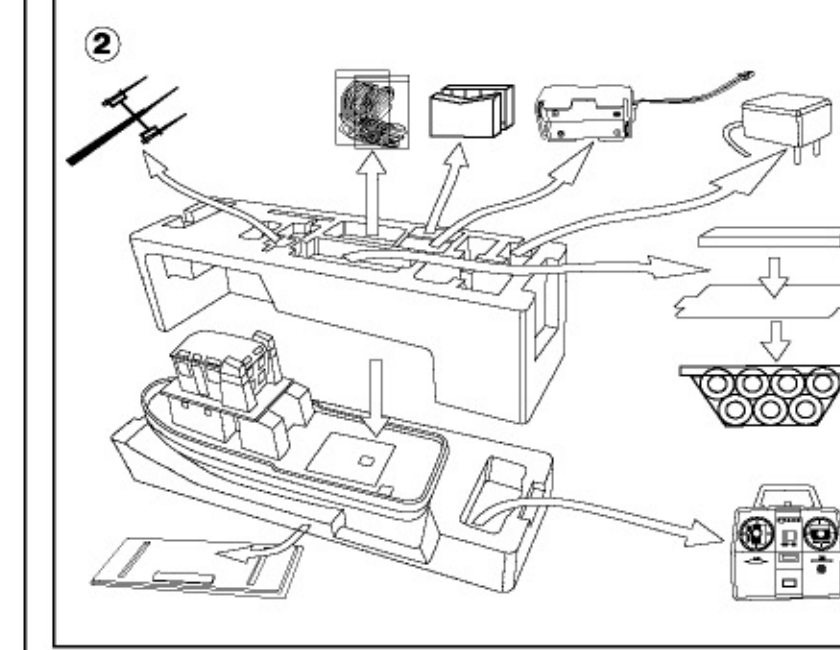
After sailing, switch off the receiver on the boat and then switch off the transmitter. Take out all the batteries from the transmitter and receiver.



Switch on the transmitter, if the propellers rotate, use the trim lever to tune the propeller to the stop position. Then tune the rudder to the central position by the trim lever. It is normal that the propeller will slightly move during tuning the trim lever moving the steering stick.



It is normal that the propeller will slightly move when the transmitter antenna is moved very near the boat.



## CAUTIONS FOR SAFETY

Never use your finger to touch the propeller to avoid hurting your fingers (fig 7) correct way to hold the boat (fig 8)

