

0703 -2.4G Remote Control EXCAVATOR Instruction Manual



Hobbyengine Model Limited
Address: Rm 619, 6/F., Peninsula Centre, 67 Mody Road, Tsim Sha Tsui East, Kowloon, Hong Kong.
Website: www.hobbyengine.com.hk

1

PRODUCT FEATURES:

On scale EXCAVATOR model with 2.4G Radio control system.
Hidden antenna on EXCAVATOR & remote controller.
Aged decoration-traces of oil,rusted,mudded.
Full digital proportional control
Working platform turn left & right 360 degrees freely.
Body spin 360 degrees freely.
Climb up to 20 degrees.
Individual track control.
Scooping light

2

INCLUDED

1. 0703 EXCAVATOR returned from site.....1
2. 2.4G Digital Radio Controller.....1
3. 7.2V X 800mAh Rechargeable Battery.....1
4. D.C 9V, 200mA, 1.8VA charger.....1

INSTALL BATTERY TO REMOTE CONTROL

1. Turn screw anti-clockwise on battery door to open.
2. Install batteries follow polarities crafted inside battery compartment.
3. Cover the battery door and tighten the screw clockwise.
4. Push the slide switch on front panel to "ON" mark. A Red LED below will be luminate to show installation was activated.

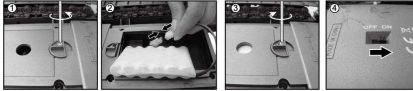


3

INSTALL BATTERY ON EXCAVATOR

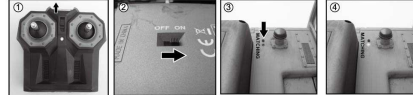
1. Turn screw anti-clockwise on battery door under EXCAVATOR to open.
2. Plug with fully charged battery pack on socket in battery compartment.
3. Cover the battery door and tighten the screw clockwise.
4. Activate EXCAVATOR by sliding switch to "ON".

REMARKS: Charge the battery pack 6 hours for the first time, 4 hours from 2" time.



MATCH THE REMOTE CONTROLLER TO THE EXCAVATOR

1. Slide remote controller power switch to "ON". LED luminate to Red.
2. Slide EXCAVATOR power switch to "ON".
3. Press "MATCHING" button on top deck of EXCAVATOR. The LED on side will be flashed for 5 seconds.
4. LED stop flashing, the EXCAVATOR is already matched with controller and ready to work.

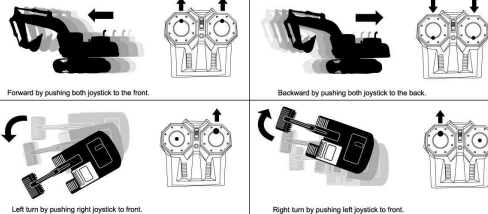


4

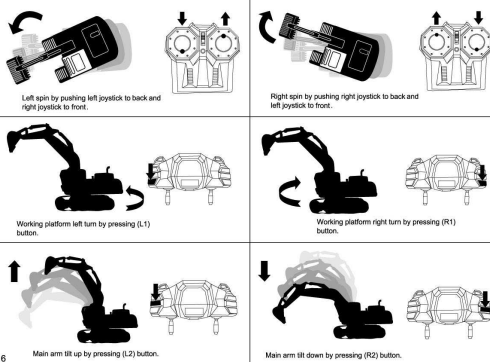
2.4G REMOTE CONTROLLER BUTTON MAP



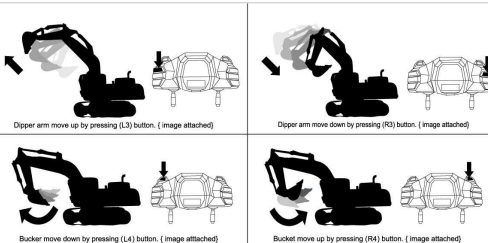
MOTION CONTROL



5



6



TROUBLE SHOOTING

1. Check the battery connection on remote controller or replace with new battery.
2. Check the battery connection inside EXCAVATOR battery compartment or recharge battery.
3. Repeat matching procedure by switching remote and EXCAVATOR on again. Press the matching button.
4. Contact us at our Email: info@hobbyengine.com.hk

SAFETY

1. Operation temperature 0°C-38°C
2. Recharge battery ONLY with charger included in packing.

7



Caution: changes or modifications not expressly approved by the party responsible for compliance could void the user's authority to operate the equipment.
NOTE: This equipment has been tested and found to comply with the limits for a Class B digital device, pursuant to Part 15 of the FCC Rules. These limits are designed to provide reasonable protection against harmful interference in a residential installation. This equipment generates, uses and can radiate radio frequency energy and, if not installed and used in accordance with the instructions, may cause harmful interference to radio communications. However, there is no guarantee that interference will not occur in a particular installation. If this equipment does cause harmful interference to radio or television reception, which can be determined by turning the equipment off and on, the user is encouraged to try to correct the interference by one or more of the following measures:
Reorient or relocate the receiving antenna.
Increase the separation between the equipment and receiver.
Connect the equipment into an outlet on a circuit different from that to which the receiver is connected.
Consult the dealer or experienced radio/TV technician for help.



8