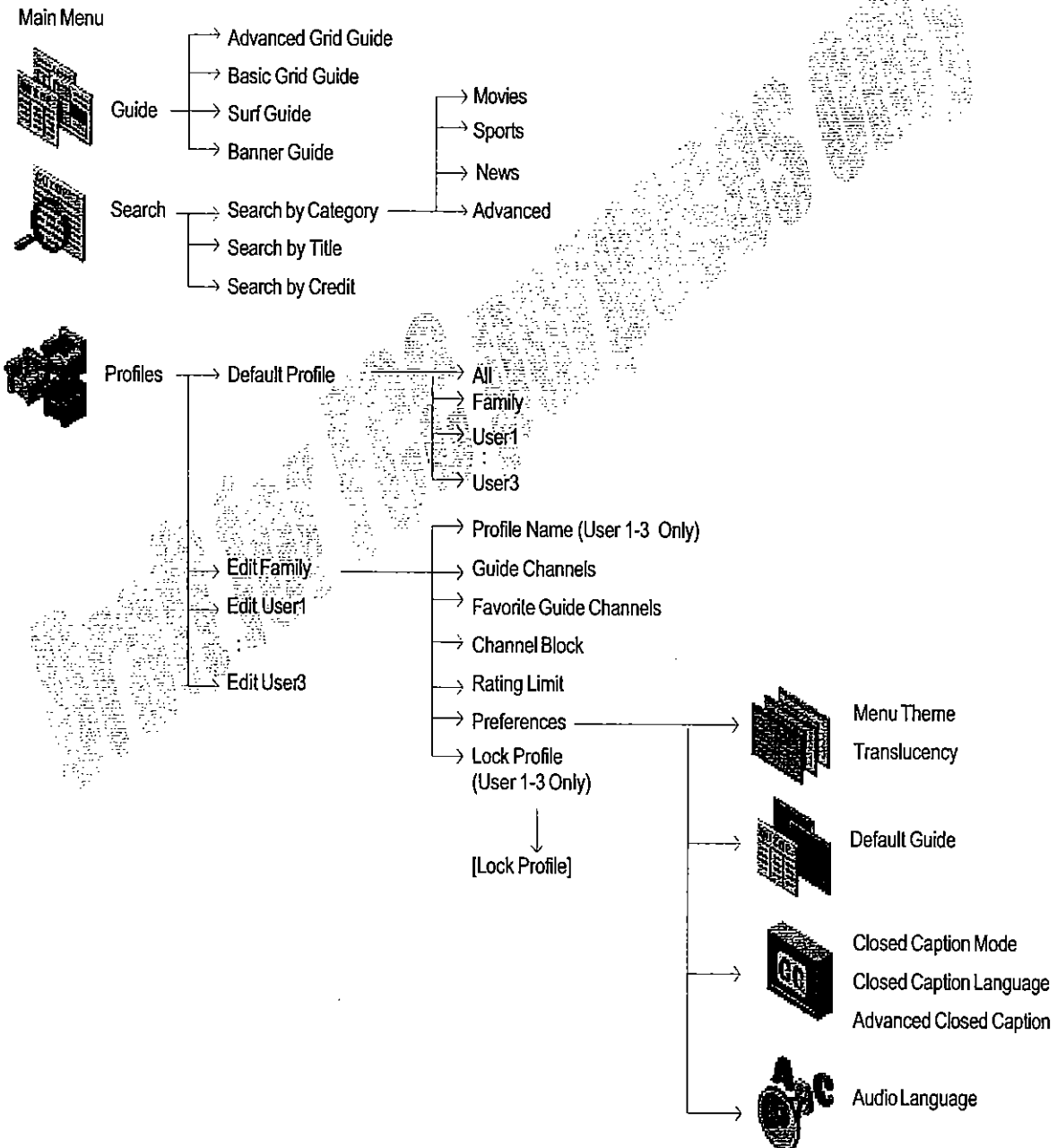


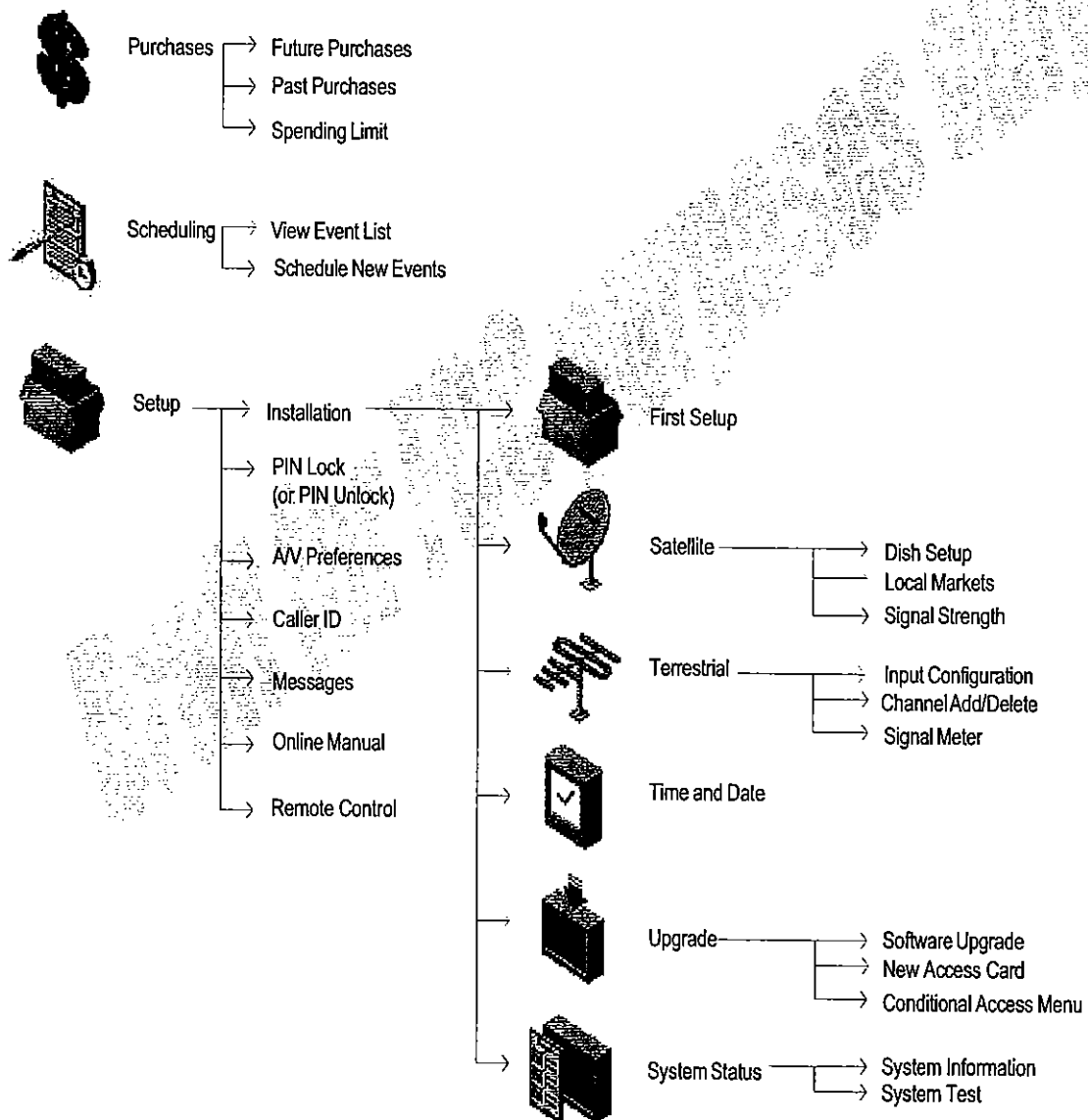
Overview

From the Main Menu you can access the different guide styles, search for programs, customize your profile, schedule events, read DIRECTV messages, lock and unlock your system, and more.

Menu Tree



Main Menu





Profile Setup

You can create a customized profile so that many system settings are just the way you like them!

● Customizing Profile Settings



Customizing Profile Settings

You can change the default profile to customize "look" and "feel" of your receiver.

Edit User Profiles Selection

1 Press MENU.



The Main Menu appears.

2 Press ◀ or ▶ to navigate to the Profiles Menu icon.



3 Press ▼ to highlight Edit Family or Edit User (1-3).

Press ▶ then ▼ to highlight the Menu item (listed below) for the setting you want to change, and then press SELECT.

Edit Guide Channels

Favorite Channels Setup

Channel Block

Rating Limits

Lock/Unlock Profile
(not available for Family Profile)

Preferences

Menu Theme/Translucency

Default Guide

Closed Caption (CC)

Audio Language

(See next page for menu descriptions)

4 Change the setting.

For more detailed instructions on how to change the setting, refer to the next page for a list of settings and their corresponding page numbers.

5 Repeat steps 3 and 4 to change other settings.

6 Press EXIT.

The on-screen display disappears.

■ To return to the previous display, press **BACK**.



Notes

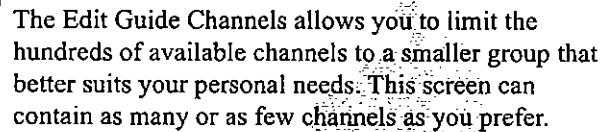
- The default profile is Family. To change the default profile, select the Default Profile menu item and choose another profile.
- The only profile that cannot be edited is the ALL profile. Select this profile when you want to see all available programming (no customizations). If a channel has been blocked in the Family profile, you will still receive a password challenge.

Setting	Details	Page
Edit Guide Channels	Select channels you want to appear in your profile's Guide.	52
Favorite Channels Setup	Select 16 of your favorite channels for quick selection using your remote.	53
Channel Block	Select channels to block from being viewed by your profile.	54
Rating Limits	Set limits on viewing specific types of programming in your profile.	55
Lock/Unlock Profile	Use a password to lock or unlock your profile.	57

Preferences sub-menu

Menu Theme	Select a color scheme for your profile's Menu System.	58
Translucency	Select the level of translucency for your profile's Menu System.	58
Default Guide	Select the default guide that will be displayed for your profile when GUIDE is pressed.	59
Audio Language	Select a preferred language for program audio.	59
Closed Caption (CC)	Set closed caption options.	60

Edit Guide Channels



- 6** After you have made all your selections, highlight **Save** and press **SELECT**.

- 7** Press **EXIT**.
The on-screen display disappears.



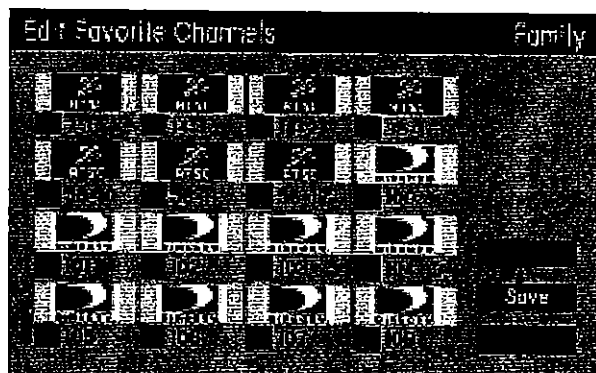
- To add all channels, highlight **Select All** and press **SELECT**.
- To clear all selected channels, highlight **Clear All** and press **SELECT**.

- ## Notes

- ***If you EXIT or Cancel out of the screen without selecting save first, your selections will not be saved.***

- *Remember:* When the system is locked, you will need the password to modify settings.

Favorite Channels Setup



The Edit Favorite Channels screen allows you to program 16 channels that can be accessed quickly by pressing **ACTION + FAV**.

1 Press **MENU**.



The Main Menu appears.

2 Press **◀** or **▶** to highlight the **Profiles Menu** icon.



3 Press **▼** to highlight **Edit User (1-3)**.

Press **▶** then **▼** to highlight **Favorite Channels**. Press **SELECT**.

4 Press **▲** or **▼** to highlight **Edit**, and then press **SELECT**.

5 Press **◀/▶/▲/▼** to highlight the box for the channel you wish to add/remove.

6 Press **SELECT** to add or remove the selection (a check mark indicates an added channel).

7 After you have made all your selections, highlight **Save** and press **SELECT**.

Press **EXIT**.

8 The on-screen display disappears.

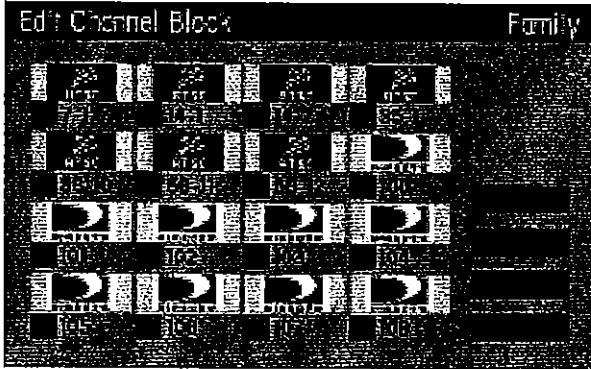
Notes

- If you **EXIT** or **Cancel** out of the screen without selecting **Save** first, your selections will not be saved.
- Remember: When the system is locked, you will need the password to modify settings.

Profiles

Customizing Profile Settings (continued)

Channel Block



The Edit Channel Block screen allows you to block selected channels from being viewed.

1 Press **MENU**.



The Main Menu appears.

2 Press **◀** or **▶** to highlight the **Profiles** Menu icon.



3 Press **▼** to highlight **Edit User (1–3)**.

Press **▶** then **▼** to highlight **Channel Block**. Press **SELECT**.

4 Press **◀** / **▶** / **▲** / **▼** to highlight the box for the channel you wish to block.

5 Press **SELECT** to block or unblock the selected channel (an X indicates a blocked channel).

6 After you have made all your selections, highlight the **Save** button and press **SELECT**.

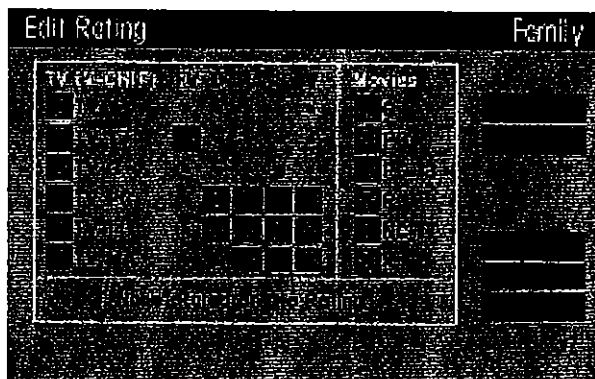
7 Press **EXIT**.
The on-screen display disappears.

- To allow all channels highlight the **Allow All** button and press **SELECT**.
- To block all channels, highlight the **Block All** button and press **SELECT**.

Notes

- *The Rating Limits are in effect only when the DST-3100 receiver is locked.*
- *If you EXIT or Cancel out of the screen without saving, your selections will not be saved.*
- *Remember: When the system is locked, you will need the password to modify settings.*

Rating Limits



The Edit Rating screen allows you to set limits on viewing specific types of programming.

See the next page for a description of rating limits.

1 Press **MENU**.



The Main Menu appears.

2 Press **◀** or **▶** to highlight the **Profiles Menu** icon.



3 Press **▼** to highlight **Edit User (1–3)**.

Press **▶** then **▼** to highlight **Rating Limits**. Press **SELECT**.

4 Press **◀/▶/▲/▼** to highlight the rating you wish to block.

5 Press **SELECT** to block or unblock the selected rating (an X indicates a blocked rating).

6 After you have made all your selections, highlight **Save** and press **SELECT**.

7 Press **EXIT**.

The on-screen display disappears.

- To help set appropriate ratings for children and youth, the *Edit Rating* screen contains **Children** and **Youth** buttons. Use these buttons to automatically set acceptable rating limits.

Notes

- **The Rating Limits are in effect only when the DST-3100 receiver is locked.**
- **If you EXIT or Cancel out of the screen without saving, your selections will not be saved.**
- **Remember: When the system is locked, the password will be needed to modify the settings.**



Customizing Profile Settings (continued)

Rating Limits (continued)

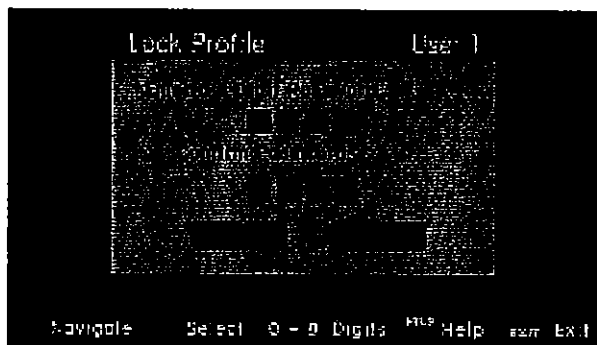
TV Ratings:

TV-MA Mature Audience Only.	<ul style="list-style-type: none"> ■ Designed to be viewed by adults and may be unsuitable for children under 17. ■ Crude, indecent language (L), explicit sexual activity (S), or graphic violence (V).
TV-14 Parents Strongly Cautioned.	<ul style="list-style-type: none"> ■ Designed to be viewed by adults and children over 14. ■ Intensely suggestive dialogue (D), strong, coarse language (L), intense sexual situations (S), or intense violence (V).
TV-PG Parental Guidance Suggested.	<ul style="list-style-type: none"> ■ Designed to be viewed by adults and older children. ■ Some suggestive dialogue (D), infrequent coarse language (L), some sexual situations (S), or moderate violence (V).
TV-G General Audience.	<ul style="list-style-type: none"> ■ Designed to be viewed by all ages. ■ Little or no sexual dialogue (D), no strong language (L) or sexual situations (S), and little or no violence (V).
TV-Y7	<ul style="list-style-type: none"> ■ Designed to be viewed by children 7 years and older. ■ Mild fantasy violence (FV) or comedic violence that may frighten younger children
TV-Y All Children	<ul style="list-style-type: none"> ■ Designed to be viewed by a young audience, including children from ages 2–6. Not expected to frighten younger children.



Movie Ratings:

- G:** General audiences. All ages admitted.
- PG:** Parental guidance suggested. Some material may not be suitable for children.
- PG-13:** Parents strongly cautioned. Some material may be inappropriate for children under 13.
- R:** Restricted. Under 17 requires accompanying parent or adult guardian.
- NC-17:** No one 17 and under admitted.
- X:** Adults Only.



Lock/Unlock Profile



Locking Procedure

- 1 Press **MENU**.
 The Main Menu appears.
- 2 Press **◀** or **▶** to highlight the **Profiles Menu** icon.

- 3 Press **▼** to highlight **Edit User (1-3)**.
 Press **▶** then **▼** to highlight **Lock**. Press **SELECT**.
- 4 Use the remote control's numbered buttons to enter a four-digit password of your choosing.
- 5 Reenter the password.
- 6 Highlight and select **OK** to proceed or **Cancel** to cancel the locking process.

Unlocking Procedure

- 1 Press **MENU**.
 The Main Menu appears.
- 2 Press **◀** or **▶** to highlight **Profiles Menu** icon.

- 3 Press **▼** to highlight **Edit User (1-3)**.
 Press **▶** then **▼** to highlight **Unlock**. Press **SELECT**.
- 4 Use the remote control's numbered buttons to enter your four-digit password.
- 5 Highlight and select **OK** to proceed or **Cancel** to cancel the unlocking process.

Profiles

Customizing Profile Settings (continued)


Preferences sub-menus

The *Preferences* option takes you to another level of the Menu System that will give you further control over personal profile settings.



Menu Theme


This menu enables you to select a color scheme for the on-screen guides and menus.

- 1 Press **MENU**.
 The Main Menu appears.
- 2 Press **◀** or **▶** to highlight the **Profiles Menu** icon.
- 3 Press **▼** to highlight **Edit User (1–3)**.
 Press **▶** then **▼** to highlight **Preferences**.
 Press **SELECT**.
- 4 Press **▼** to highlight **Menu Theme**, then press **▶** to display the themes sub-menu.
- 5 Press **▼** to highlight the desired theme color.



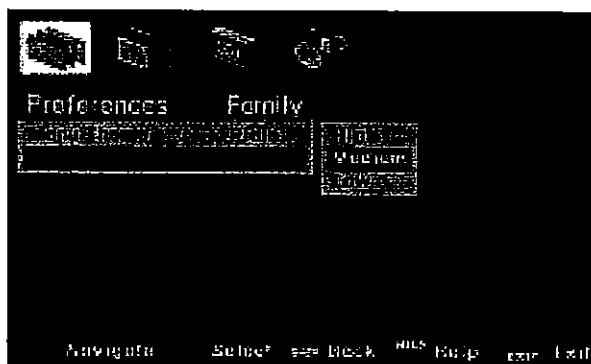
Translucency

This menu allows you to determine the level or translucency of the on-screen guides and menus.

- 1 Press **MENU**.
 The Main Menu appears.
- 2 Press **◀** or **▶** to highlight the **Profiles Menu** icon.
- 3 Press **▼** to highlight **Edit User (1–3)**.
 Press **▶** then **▼** to highlight **Preferences**.
 Press **SELECT**.
- 4 Press **▼** to highlight **Translucency**, then press **▶** to display the sub-menu.
- 5 Press **▼** to highlight the desired level of translucency, as described below.

Levels of Translucency:


- High: Easy to see through.
- Medium: Somewhat difficult to see through.
- Low: Solid.





Default Guide


This menu allows you to set the default guide for your profile. The default guide appears when you press GUIDE on the remote control.

- 1 Press **MENU**.
 The Main Menu appears.
- 2 Press **◀** or **▶** to highlight the **Profiles Menu** icon.
- 3 Press **▼** to highlight **Edit User (1-3)**.
 Press **▶** then **▼** to highlight **Preferences**.
 Press **SELECT**.
- 4 Press **▶** and **▼** to navigate to the **Default Guide**, then press **▶** to display the sub-menu.
- 5 Press **▼** to highlight the desired guide.

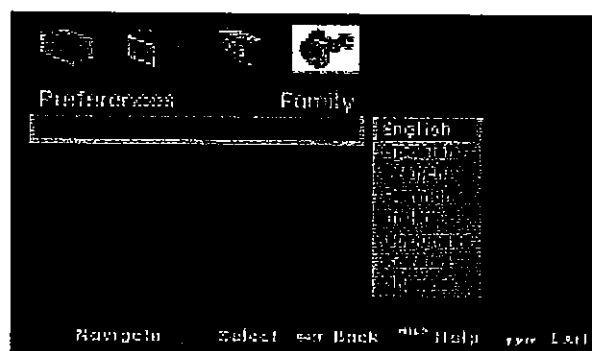
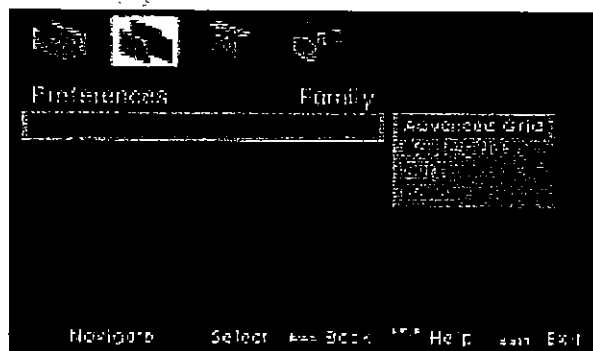


Audio Language

This menu allows you to set the audio language you will hear while watching a program.

- 1 Press **MENU**.
 The Main Menu appears.
- 2 Press **◀** or **▶** to highlight the **Profiles Menu** icon.
- 3 Press **▼** to highlight **Edit User (1-3)**.
 Press **▶** then **▼** to highlight **Preferences**.
 Press **SELECT**.
- 4 Press **▶** and **▼** to navigate to **Audio Language**, then press **▶** to display the sub-menu.
- 5 Press **▼** to highlight the desired audio language.

Profiles



Customizing Profile Settings (continued)

Preferences sub-menus (continued)



Closed Caption


This menu contains menu options for controlling Closed Captions.


Closed Caption Mode

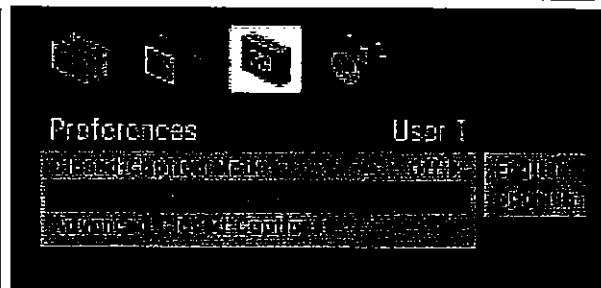
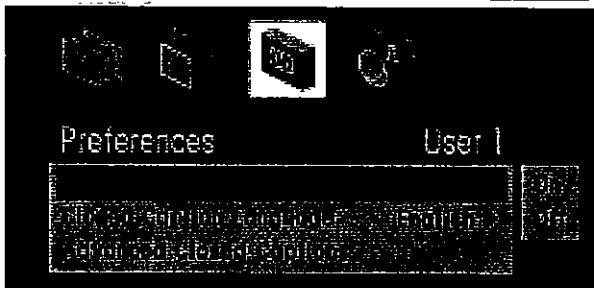
This option turns closed captions on or off.

Closed Caption Language

This option allows you to select whether the closed captions will be displayed in English or Spanish (if available).


- 1 Press **MENU**.
 The Main Menu appears.
- 2 Press **◀** or **▶** to highlight the **Profiles Menu** icon.
- 3 Press **▼** to highlight **Edit User (1-3)**.
 Press **▶** then **▼** to highlight **Preferences**.
 Press **SELECT**.
- 4 Press **▼** to highlight **Closed Caption Mode**, then press **▶** to display the mode sub-menu.
- 5 Press **▼** to highlight **On** or **Off**.

- 1 Press **MENU**.
 The Main Menu appears.
- 2 Press **◀** or **▶** to highlight the **Profiles Menu** icon.
- 3 Press **▼** to highlight **Edit User (1-3)**.
 Press **▶** then **▼** to highlight **Preferences**.
 Press **SELECT**.
- 4 Press **▼** to navigate to **Closed Caption Language**, then press **▶** to display the language sub-menu.
- 5 Press **▼** to highlight **English** or **Spanish**.



Advanced Closed Captions

This option gives you control over the look and feel of the closed caption text for digital terrestrial channels.

1 Press **MENU**.
 The Main Menu appears.

2 Press **◀** or **▶** to navigate to the **Profiles Menu** icon.

3 Press **▼** to highlight **Edit User (1-3)**.
 Press **▶** then **▼** to highlight **Preferences**.
 Press **SELECT**.

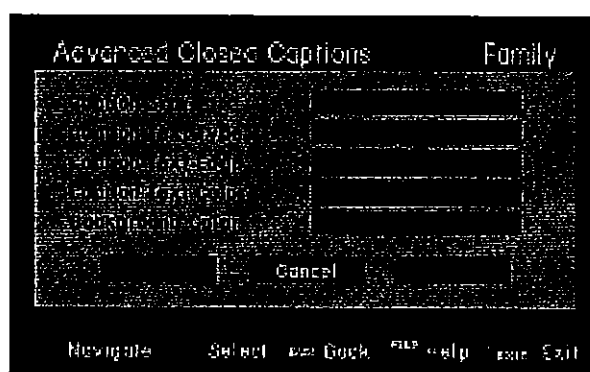
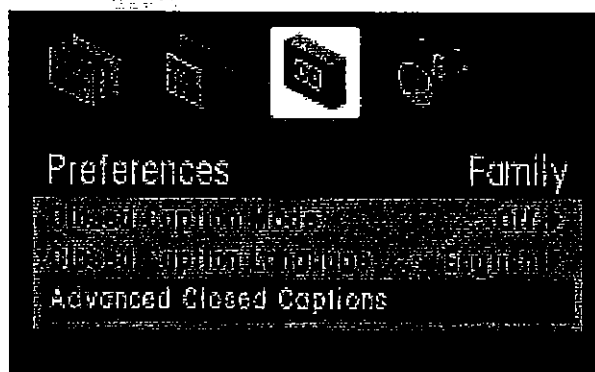
4 Press **▼** to highlight **Advanced Closed Captions**, then press **SELECT**.
 The Advanced Closed Captions screen appears.

5 Press **▲** or **▼** to highlight the desired option.

6 Press **◀** or **▶** to change the settings.
 Repeat steps 5 and 6 until all desired settings are made.

7 Press **▲** or **▼** to highlight **Save** and press **SELECT**.

Profiles



THE
JOURNAL
OF
THE
ROYAL
ANTHROPOLOGICAL
INSTITUTE
OF GREAT
BRITAIN
AND IRELAND
VOLUME
LXXV
PART I
1905

Scheduling

- Scheduling an Event
- Editing a Scheduled Event
- View Events List
- Event Reminders



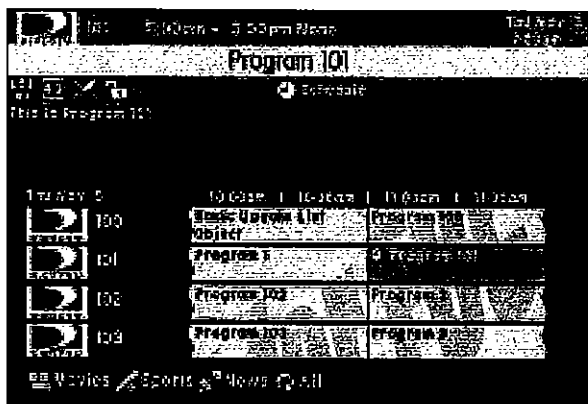
Scheduling an Event

Scheduling events is a great feature that allows you to be reminded when a program you want to watch is on. There are several different ways to schedule an event.

Ways To Schedule an Event

From the Guide (no event conflict):

- 1 Press **◀/▶/▲/▼** to highlight a desired future event. Press **SELECT**.
- 2 If there is *not* a conflict, the event will be scheduled and a clock icon will appear in the Guide next to the event.



From the Guide (event conflict):

- 1 Press **◀/▶/▲/▼** to navigate to a desired future event. Press **SELECT**.
- 2 If there *is* a conflict, the following message will appear.



- 3 Press **◀/▶/▲/▼** to highlight the desired choice. Press **SELECT**.
A clock icon will appear in the Guide next to the event you just scheduled.

From Search (no event conflict):

- 1 Perform a search (see Search section of this manual for detailed instructions). Press ▲ or ▼ to navigate to the desired event. Press **SELECT**.

The Showtimes screen appears

- 2 Press ▲ or ▼ to navigate to the desired future event time. Press **SELECT**.

- 3 If there is *not* a conflict the following message will appear confirming the scheduled event.



- 4 Press ◀ or ▶ to navigate to the OK button and press **SELECT**.

From Search (event conflict):

- 1 Perform a search (see Search section of this manual for detailed instructions). Press ▲ or ▼ to navigate to the desired event. Press **SELECT**.

The Showtimes screen appears

- 2 Press ◀/▶/▲/▼ to navigate to the desired future event time. Press **SELECT**.

- 3 If there *is* a conflict the following screen will appear:





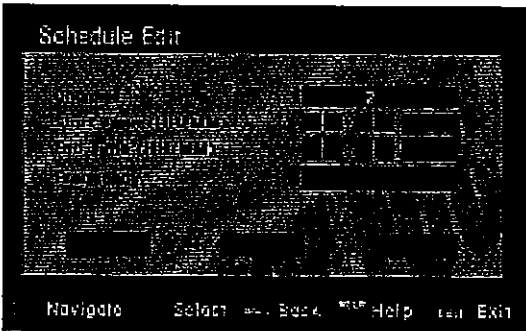
- 4 Press ◀/▶/▲/▼ to navigate to the desired choice. Press **SELECT**.

Scheduling



Scheduling an Event (continued)

Ways To Schedule an Event (continued)

Manually from the Guide:

- 1 Press **GUIDE**.
 The Guide appears.
- 2 Press **JUMP** twice to highlight **Schedule** in the banner. Press **SELECT**.
 The Schedule Edit screen appears.

- 4 Press **◀/▶/▲/▼** to navigate to the fields and enter the appropriate event information.
- 5 To save the new event, highlight **Add** and press **SELECT**.

Manually from the Main Menu:

- 1 Press **MENU**.
 The Main Menu appears.
- 2 Press **◀** or **▶** to highlight the **Schedule Menu** icon.

- 3 Press **▼** to highlight **Schedule New Events** and press **SELECT**.
 The Schedule Edit screen appears. (shown left)
- 4 Press **◀/▶/▲/▼** to navigate to the fields and enter the appropriate event information.
- 5 To save the new event, navigate to **Add** and press **SELECT**.

- The Frequency field can be used to schedule the event on a recurring basis.
- When entering the channel number, you can use either **◀** or **▶** to scroll through the channels or use the numbered buttons on your remote control to directly enter the desired channel number.



Editing a Scheduled Event

Editing a Previously Scheduled Event

- 1** Press **MENU**.
MENU The Main Menu appears.

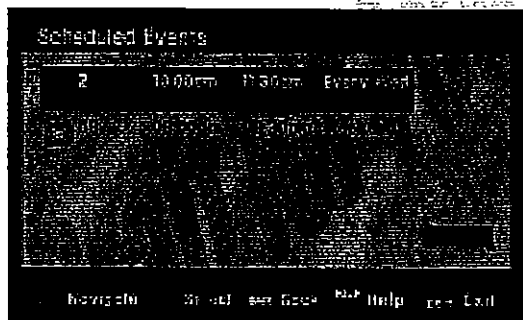


- 2** Press ◀ or ▶ to highlight the **Schedule Menu** icon.



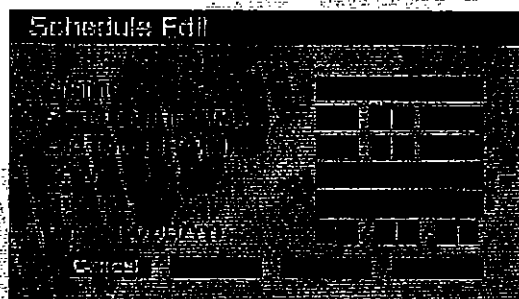
- 3** Press ▼ to highlight **View Event List** and press **SELECT**.

The View Event List screen appears.



- 4** Press ▲ or ▼ to highlight the event you want to change. Press **SELECT**.

The Schedule Edit screen appears.



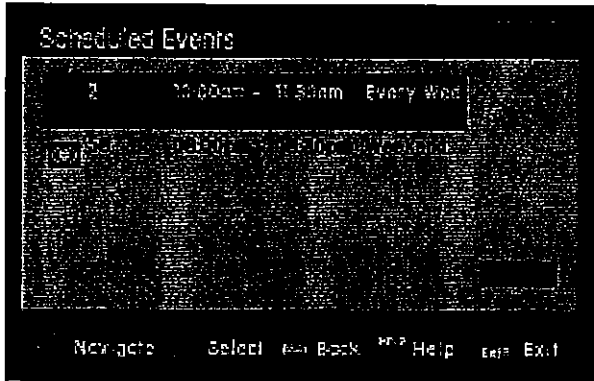
- 5** Press ◀/▶/▲/▼ to navigate to the fields and enter the appropriate event information.

- 6** To save the new event, highlight **Add** and press **SELECT**.



Viewing Scheduled Programs

View Event List



The *View Event List* option displays four scheduled events at one time.

1 Press **MENU**.



The Main Menu appears.

2 Press **◀** or **▶** to highlight to the **Scheduling Menu** icon.



3 Press **▼** to highlight **View Event List** and press **SELECT**.

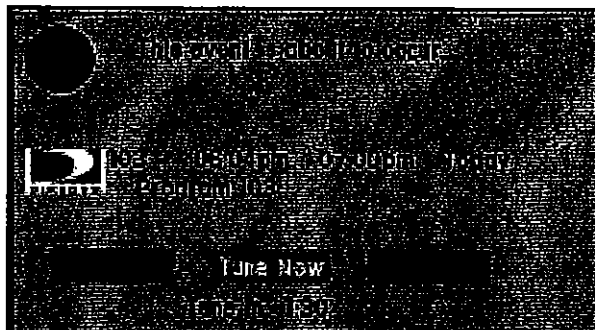


The View Event List screen appears.

- If more than four events are scheduled, use ▲ or ▼ to scroll the list.
- A small arrow at the top or bottom of the event list indicates that there are additional events scheduled.

Event Reminders

System Messages



After you have scheduled an event and the event is due to start within two minutes, the system will display a message (shown above) reminding you of your scheduled event.

This message, which will be displayed for two minutes, gives you the following options:

Tune Later: Closes the reminder and tunes to the event when it starts.

Tune Now: Tunes to the event now.

Abort: Closes the reminder, does not remind you again, and cancels the event.

If you do not select any of the above options, the system will tune to the event at the end of the two minutes.

If your receiver is off when the event is due, the receiver will turn on and tune to the event. At the conclusion of the event, the receiver will then turn off.

Handwritten text, likely a signature or name, written diagonally across the page. The text is heavily stylized and appears to be a cursive or shorthand script, possibly reading "Handwritten text" or similar. The ink is dark and the background is white.

Purchasing Movies

Pay per view (PPV) access enables you to purchase special limited broadcast programs.

- Future Purchases
- Past Purchases
- Spending Limit



Purchases Menu

Use the Purchases Menu to control your pay per view options.

Future Purchases





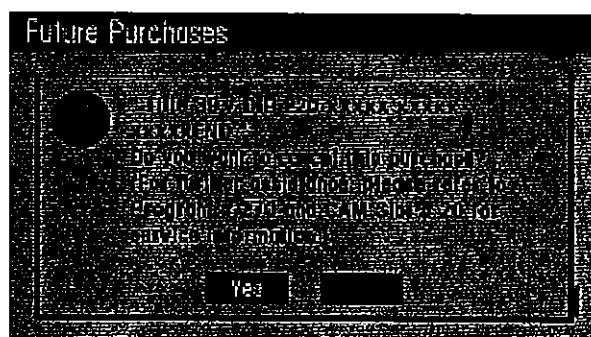
The **Future Purchases** option displays advance purchase pay-per-view events.

For each purchase, the event channel, title, start date and time, and cost are listed.

If there are more events than can fit on the screen, navigate into the list and use ▲ or ▼ to scroll and view them.

Viewing The Advanced Purchase PPV List

- 1 Press **MENU**.
 The Main Menu appears.
- 2 Press ◀ or ▶ to highlight the **Purchases Menu** icon.

- 3 Press ▼ to highlight **Future Purchases** and press **SELECT**.
- 4 Repeat steps 1–3 above.
- 5 Press ◀ / ▶ / ▲ / ▼ to highlight the event you want to cancel. Press **SELECT**.
- 6 A cancel message (shown right) appears.
Press ◀ or ▶ to highlight **Yes** to cancel the event or **No** to keep the event.



Past Purchases




The **Past Purchases** option displays pay per view (PPV) events you have already viewed.

Spending Limit



The **Spending Limit** option allows you to set the maximum purchase price on a per-event basis. The maximum allowed for a single event is \$655.

1 Press **MENU**.
 The Main Menu appears.

2 Press ◀ or ▶ to highlight the **Purchases Menu** icon.



3 Press ▼ to highlight **Spending Limit** and press **SELECT**.

4 Use the numbered buttons on your remote control to enter a dollar amount.

5 Press ◀ or ▶ to highlight **Save** and press **SELECT**.

THE
FEDERAL
BUREAU OF
INVESTIGATION
OF THE
DEPARTMENT OF JUSTICE
WASHINGTON, D. C. 20535

Additional Features

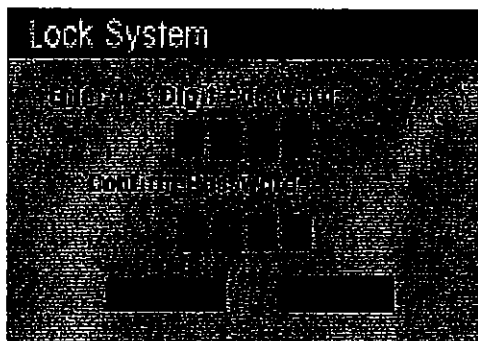
- Password Management
- Audio/Video
- Caller ID
- Messages
- Help
- Remote Control RF Settings





Password Management

Use the following steps to lock and unlock your HD receiver's menu system.

PIN Lock/Unlock





Locking Procedure

- 1 Press **MENU**.
MENU The Main Menu appears.

- 2 Press ◀ or ▶ to highlight the **Setup Menu** icon.

- 3 Press ▼ to highlight **PIN Lock**.
- 4 Use the remote control's numbered buttons to enter a four-digit password of your choosing.
- 5 Reenter the password.
- 6 Highlight and select **OK** to proceed or **Cancel** to cancel the locking process.



Unlocking Procedure

- 1 Press **MENU**.
MENU The Main Menu appears.

- 2 Press ◀ or ▶ to highlight the **Setup Menu** icon.

- 3 Press ▼ to highlight **PIN Unlock**.
- 4 Use the remote control's numbered buttons to enter the four-digit system password.
- 5 Highlight and select **OK** to proceed or **Cancel** to cancel the unlocking process.

With the system locked, the following features are enforced:

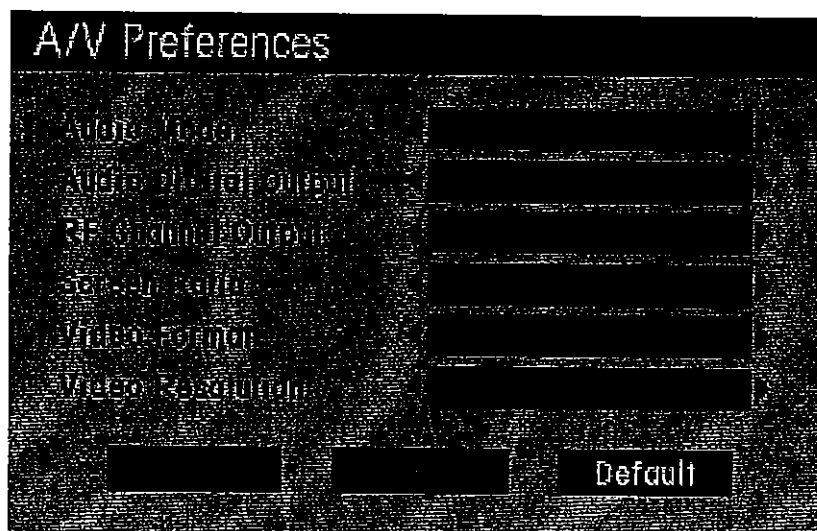
- Rating Limits
- Channel Block
- Profiles Locked
- Spending Limit



Audio/Video

Press **MENU** and navigate to **Setup/Audio/Video Preferences** to access this screen.

Preferences



To use the default settings, navigate to **Default** and press **SELECT**.

All available settings are listed below. Note that the defaults are **bold**.

Audio Mode: **Stereo**, SAP, Mono

Audio Digital Output: Dolby, PCM, Off, **Auto**

RF Channel Output: **CH 3**, CH 4

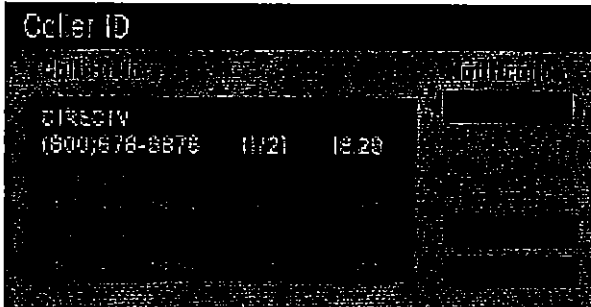
Screen Ratio: **Wide (16:9)**, Standard (4:3)

Video Format: Side Panels, Cropped, **Full**, Letter Box

Video Resolution: **Hybrid**, 480p, 720p, 1080i, 480i



Call History

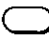



Use the Caller ID screen to view the history of all received calls and enable and disable call notification.



When a call is received, a window appears on-screen listing the caller's name and phone number. The call is then logged into the Call History area of the Caller ID screen.

Note: This feature is only available if you subscribe to the caller ID service provided by your local telephone company.

Call History List

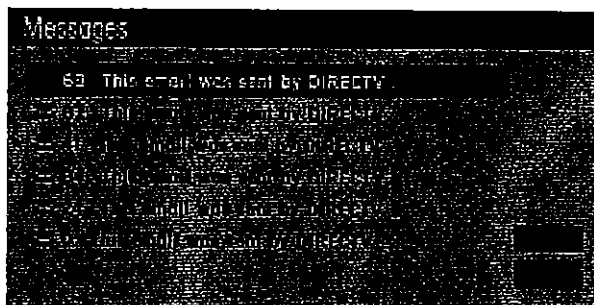
- 1 Press **MENU**.
 The Main Menu appears.
- 2 Press **◀** or **▶** to highlight the Setup Menu icon.

- 3 Press **▼** to highlight **Call History**. Press **SELECT**.
- 4 Press **◀** or **▶** to navigate into the **Call History** list.
- 5 Press **▲** or **▼** to navigate through the list of received calls.

Enable/Disable Notification

- 1 Press **MENU**.
 The Main Menu appears.
- 2 Press **◀** or **▶** to highlight the **Setup Menu** icon.

- 3 Press **▼** to highlight **Call History**. Press **SELECT**.
- 4 Press **▲** or **▼** to navigate to the **Notification** field.
- 5 Press **◀** or **▶** to highlight **Enable** or **Disable**.
- 6 Press **▼** to highlight **Save** and press **SELECT**.

Messages


Messages



DIRECTV uses messages to inform you of special events and service announcements.

From this screen you can view new messages and save or delete old ones.

Viewing Message

1 Press **MENU**.
 The Main Menu appears.

2 Press **◀** or **▶** to highlight the Setup Menu icon.


3 Press **▼** to highlight **Messages**. Press **SELECT**.

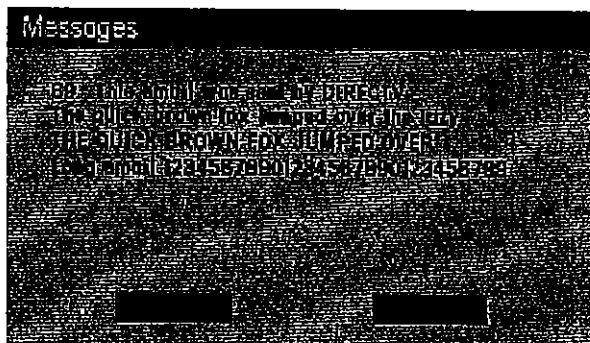
4 Press **◀** or **▶** to navigate into the list of Messages.

5 Press **▲** or **▼** to navigate through the list and highlight a message you would like to read, and then press **SELECT**.

The message will open (see sample screen at right).

6 After you have read the message you can either delete it or close and save it to the messages list.

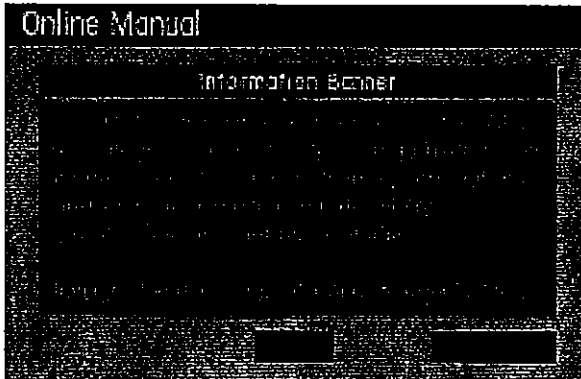
Press **◀** or **▶** to highlight either Close or Delete. Press **SELECT**.



Additional Features



Online Manual



The Online Manual allows you to access detailed on-screen help.

To access the Online Manual:

1 Press **MENU**.

MENU



The Main Menu appears.

2 Press ◀ or ▶ to highlight the **Setup Menu** icon.



3 Press ▼ to highlight **Online Manual**. Press **SELECT**.

4 Press ◀ or ▶ to navigate through the help topics.

5 If there is more text that can be viewed on one screen, press ▼ to highlight **More** and press **SELECT**.

6 When you are finished, highlight **OK** and press **SELECT**.

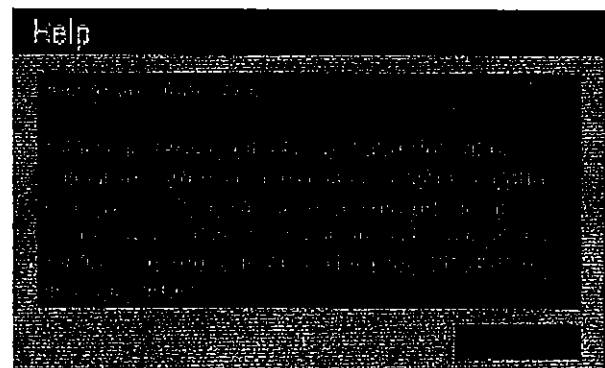
Help Button

You can press **HELP** from anywhere in the Menu System.

HELP



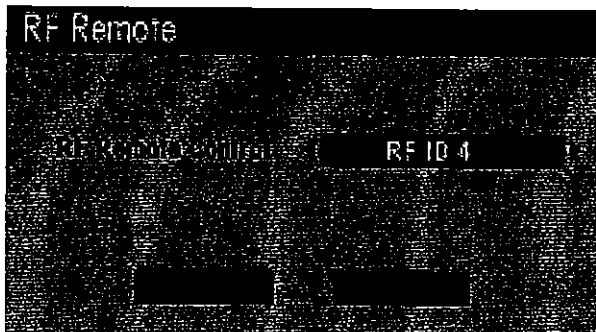
A help screen will display with information specific to your current location in the Menu System.





Remote Control RF Settings



RF Settings



The RF remote control must use a different RF remote code than any other RF device close to it. Use the RF Remote screen to set this code.

You also must program the same RF code into the remote control that you select in the RF Remote screen. If you ever have interference issues with the remote control, try changing this setting.

RF Remote Screen

- 1 Press **MENU**.
 The Main Menu appears.
- 2 Press **◀** or **▶** to highlight the **Setup Menu** icon.

- 3 Press **▼** to highlight **Remote Control**. Press **SELECT**.
- 4 Press **◀** or **▶** to change the RF Remote Control code.
- 5 Press **▼** to highlight **Save** and press **SELECT**.

Programming the RF Code into the Remote Control:

- 1 Set the SAT/TV1/TV2 switch on the left side of the remote control to **SAT**.
- 2 While holding down **MUTE**, press the numbered buttons to enter the RF code (0–4) you selected on the RF Remote screen.
 Note: 0 will turn the RF off.

Additional Features

THE
JOURNAL
OF
THE
ROYAL
ANTHROPOLOGICAL
INSTITUTE
OF GREAT
BRITAIN
AND IRELAND
VOLUME
LXXV
PART I
1905

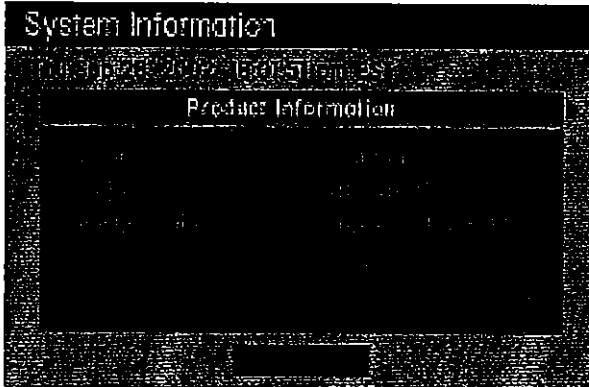
Support

- System Status
- Before Calling Service
- Specification
- Limited Warranty

System Status

Check the System Information and System Test screens for the possible cause of a problem before contacting service.

System Information Screen



The System Information screen contains important technical information about your receiver.

Product Information:

- Brand
- Model Number
- Serial Number

Tuner List:

- Tuner Name
- Input Name
- Capability

Copyright Information:

- DIRECTV

Software Version:

- Version Number

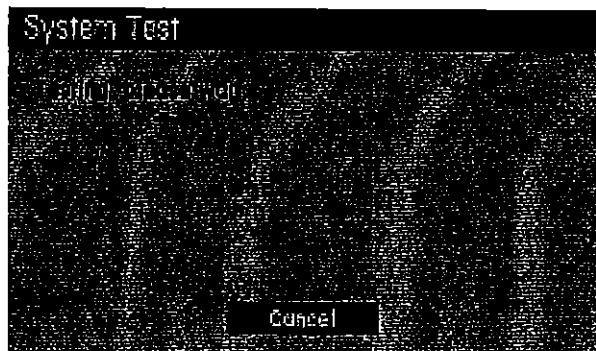
Settings:

- Daylight Saving
- Phone Prefix
- Access Card Number

Features List:

- Features of your receiver


System Test Screen



The System Test screen can determine whether your receiver is working correctly.

Perform this test before calling Customer Service.

To Perform a System Test:

- 1 Press **MENU**.
MENU The Main Menu appears.

- 2 Press **◀** or **▶** to highlight the **Setup Menu** icon.
- 3 Press **▼** to highlight **Installation**. Press **SELECT**.
- 4 Press **◀** or **▶** to highlight the **System Status Menu** icon.

Press **▼** to highlight **System Test**. Press **SELECT**.

Support

Before Calling Service Personnel

Check the following table for the possible cause of a problem before contacting service personnel.

Symptoms and correction

SYMPTOM	CAUSE	CORRECTION
"Searching for Satellite Signal" OR "Searching for Program Guide" message appears	Your satellite signal has been interrupted.	Check to make sure that weather conditions have not caused your signal to be temporarily interrupted. Check your satellite dish antenna to make sure it has not been obstructed, damaged, or moved. From the <i>Installation</i> menu, select <i>Terrestrial/Signal Strength</i> and re-test the signal strength.
Remote control does not operate		Make sure there is nothing blocking the signal between the remote control and the front of the HD receiver. Replace the batteries in the remote control. Make sure the SAT/TV1/TV2 switch on the side of the remote control is set to the appropriate position.
Picture; but no sound	THE TV is muted. The volume is too low. The audio cables are not connected correctly.	Press MUTE on the remote control. Adjust the volume level. Check the audio cable connections.
No picture; no sound	Your connections are incorrect.	Check the ANT/TV/SAT connections. Check the power cord.
No picture; no sound; "Please Insert a Valid Access Card" message appears	Your access card is not inserted. Your access card is not inserted correctly.	Insert your access card. Remove your access card and reinsert with the gold contact facing down and the arrow on the top pointing toward the receiver.
Picture appears distorted	The video settings are not correct.	From the <i>Setup</i> menu, select <i>AV Preferences</i> and verify that you have the proper video settings selected.
Unable to select a specific channel	The channel is blocked. The channel has been erased from the list of available channels.	From the <i>Profiles</i> menu, select <i>Edit/Channel Block</i> and unblock the channel. From the <i>Setup</i> menu, select <i>Terrestrial/Channel Add Delete</i> and add the channel.

Specifications

HD Receiver / Inputs / Outputs / Audio / Video / Supplied Accessories

HD Receiver

Power Supply	120V, 60Hz
Power Consumption	49.6W
External Dimensions	13 1/8" (w) x 2 3/4" (h) x 12 1/2" (d)
Weight	5 lbs. 13 oz.

Inputs

ATSC/NTSC	75 Ohm F-Type (2)
DIRECTV	75 Ohm F-Type (1)
Smart Card	Slot behind door on front panel (1)
AC Power Cord	120V, 60Hz

Outputs

DVI/HDCP	1080i, 720p, 480p, 480i, (1)
Component (Y, PB, PR)	1080i, 720p, 480p, 480i, (1)
S-Video	S-Video, (1)
Audio L/R	RCA style (2)
Video	RCA style (2)
Digital Audio (Optical)	Optical (1)
Telephone Line	RJ-11 (1)
RF	75 Ohm F-type (1)

Audio

Analog Stereo
Dolby Digital (AC-3)
PCM

Video

DIRECTV SD
DIRECTV HD
Aspect Ratio 4:3
Aspect Ratio 16:9

Supplied Accessories

Cables	5? (Coaxial RF, Telephone, DVI, Audio, 5-conductor Component)
IR/RF Remote Control	CT-90116
Batteries	4 AAA
Smart Card	1

Support

LIMITED WARRANTY

Toshiba America Consumer Products, Inc. ("TACP") and Toshiba Hawaii Inc. ("THI") make the following limited warranty. This limited warranty extends to the original consumer purchaser, or any person receiving this product as a gift from the original consumer purchaser, and to no other purchaser or transferee. This limited warranty applies only to products purchased and operated in the USA.

LIMITED WARRANTY - ONE (1) YEAR PARTS AND LABOR

WHAT IS COVERED

Any defect in materials or workmanship. This warranty applies only to the Toshiba DST-3100 High Definition Digital Receiver and the included remote control unit.

WHAT TACP OR THI WILL DO

Within one year from the date of original retail purchase: Repair the defective DST-3100 Receiver, remote control unit, or parts; or exchange the receiver or remote control unit with a new or (at TACP/THI's option) refurbished receiver or remote control unit. Labor costs for the removal and re-installation of any equipment are your responsibility.

Your responsibility:

1. You must retain your bill of sale or provide other proof of purchase.
2. All warranty servicing of the product must be made by a TACP/THI Authorized Service Station.
3. These warranties are effective only if the product is purchased and operated in the U.S.A.

WHAT YOUR WARRANTY DOES NOT COVER

- Any High Definition Digital Receiver accessory not included with the DST-3100 Receiver.
- Original or subsequent installation.
- Damage caused by acts of God, including but not limited to lightning or power surge damage.
- Adjustment of customer controls, including but not limited to installation, alignment, or repair of a satellite dish or terrestrial antenna.
- Damage from misuse, accident, neglect, improper installation, installation or use in violation of instructions provided by TACP/THI or applicable building codes, or improper maintenance.
- Units or parts which have been lost or discarded by you.
- A unit that has been modified or incorporated into other products, or is used for institutional, rental, or commercial purposes.
- Batteries for remote control hand units.
- Units purchased, serviced, or operated outside the United States of America.
- Loss of programming.
- Shipping damage if the unit was not packaged in the manner prescribed by TACP.

Warranty is void if the model and/or serial number tag is missing, altered, defaced, or otherwise rendered illegible.

You should read the DST-3100 Receiver Owner's Manual thoroughly before using this product.

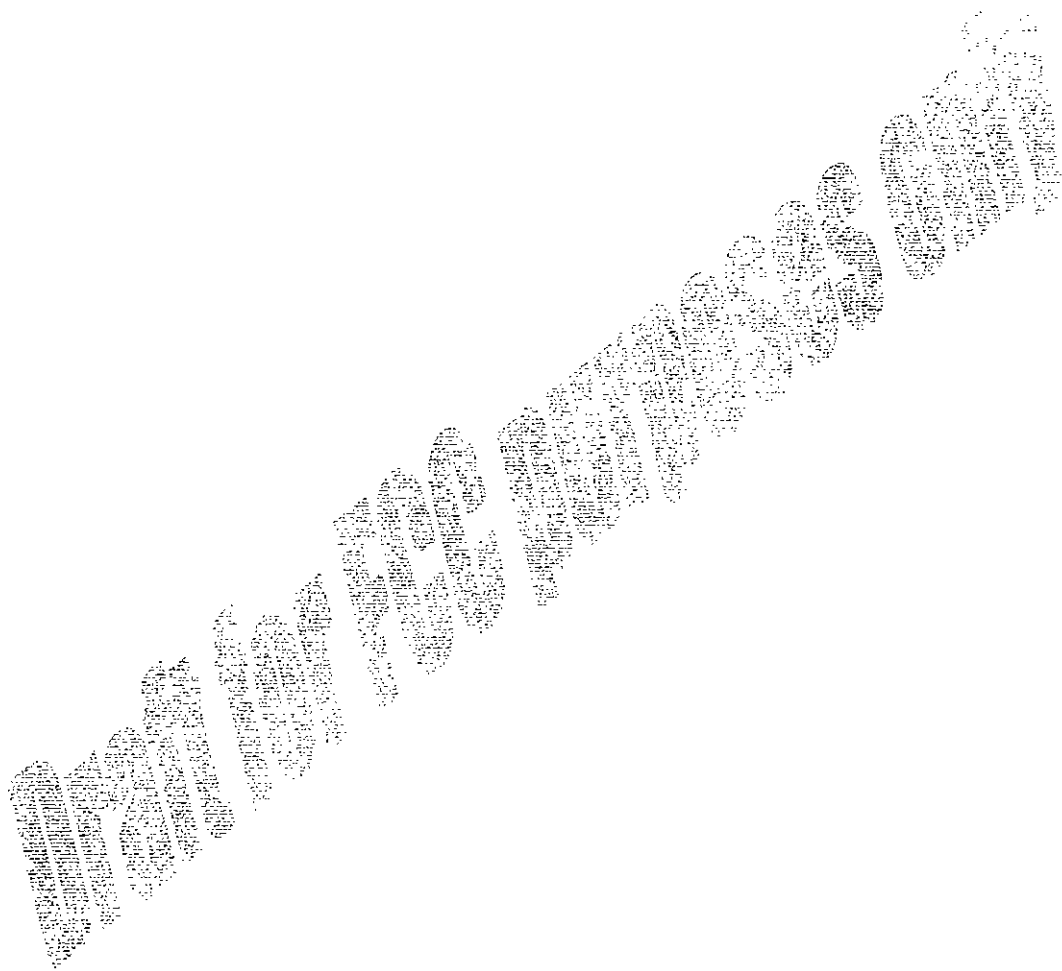
How you get service:

- Have the unit's proof of purchase, model number, and serial number ready, and call 1-888-867-4377. The model and serial number information is on the back panel of the DST-3100 Receiver.
- A Customer Service Representative will help you troubleshoot the problem over the telephone.
- If our Customer Service Representative determines that the Toshiba High Definition Digital Receiver, or the remote control unit, is the cause of your problem, you will be provided with a Return Authorization (RA) number, and instructions on returning the defective unit for repair or replacement. No returns will be accepted without an RA number.
- If our Customer Service Representative determines that your terrestrial antenna, satellite dish, or access card is defective, you will be advised of appropriate corrective measures.
- If our Customer Service Representative determines that the installation is the cause of your problem, you will be referred to your system installer for installation service. Installation service is your responsibility.
- Removal and re-installation of any and all equipment are your responsibility.
- If you have questions concerning your DIRECTV billing or programming, please call DIRECTV at 1-800-347-3288.

How state law relates to your warranty:

ALL WARRANTIES IMPLIED BY STATE LAW, INCLUDING THE IMPLIED WARRANTIES OF MERCHANTABILITY AND FITNESS FOR A PARTICULAR PURPOSE, ARE EXPRESSLY LIMITED TO THE DURATION OF THE LIMITED WARRANTIES SET FORTH ABOVE. WITH THE EXCEPTION OF ANY WARRANTIES IMPLIED BY STATE LAW AS HEREBY LIMITED, THE FOREGOING EXPRESS WARRANTIES ARE EXCLUSIVE AND IN LIEU OF ALL OTHER WARRANTIES, GUARANTEES, AGREEMENTS AND SIMILAR OBLIGATIONS OF MANUFACTURER OR SELLER WITH RESPECT TO THE REPAIR OR REPLACEMENT OF ANY PRODUCT OR PARTS. IN NO EVENT SHALL TACP OR THI BE LIABLE FOR CONSEQUENTIAL OR INCIDENTAL DAMAGES. NO PERSON, AGENT, DISTRIBUTOR, DEALER OR COMPANY IS AUTHORIZED TO CHANGE, MODIFY OR EXTEND THE TERMS OF THESE WARRANTIES IN ANY MANNER WHATSOEVER. THE TIME WITHIN WHICH AN ACTION MUST BE COMMENCED TO ENFORCE ANY OBLIGATION OF TACP OR THI ARISING UNDER THE WARRANTY OR UNDER ANY STATUTE, OR LAW OF THE UNITED STATES OR ANY STATE THEREOF, IS HEREBY LIMITED TO ONE (1) YEAR FROM THE DATE YOU DISCOVER OR SHOULD HAVE DISCOVERED, THE DEFECT. SOME STATES DO NOT ALLOW LIMITATION ON HOW LONG AN IMPLIED WARRANTY LASTS, WHEN AN ACTION MAY BE BROUGHT, OR THE EXCLUSION OR LIMITATION OF INCIDENTAL OR CONSEQUENTIAL DAMAGES, SO THE ABOVE PROVISIONS MAY NOT APPLY TO YOU. THIS WARRANTY GIVES YOU SPECIFIC LEGAL RIGHTS AND YOU MAY ALSO HAVE OTHER RIGHTS, WHICH MAY VARY FROM STATE TO STATE.

Support



TOSHIBA

Printed in USA