

DocuNote

User's Manual



STEP UP
COMPUTING

EXPANDING YOUR COMPUTING HORIZON
www.stepupcomputing.com

Trademarks

StepUp, DocuNote, the StepUp logo, and other StepUp trademarks are the property of StepUp Computing, LLC and may be registered in the United States and/or other countries.

Microsoft, Windows, and the Microsoft logo are trademarks or registered trademarks of Microsoft Corporation in the United States and/or other countries.

Crusoe is a trademark of Transmeta Corporation in the United States and/or other countries.

Other product names, logos, designs, or titles mentioned within this manual may be trademarks of their respective owners.

Disclaimer

STEPUP COMPUTING, LLC MAKES NO WARRANTIES, EITHER EXPRESS OR IMPLIED, REGARDING THIS MANUAL AND THE INFORMATION CONTAINED HEREIN. STEPUP COMPUTING, LLC HEREBY EXPRESSLY DISCLAIMS ANY IMPLIED WARRANTIES OF MERCHANTABILITY OR FITNESS FOR ANY PARTICULAR PURPOSE AND UNDER NO CIRCUMSTANCES SHALL STEPUP COMPUTING, LLC BE LIABLE FOR ANY INCIDENTAL, CONSEQUENTIAL, OR SPECIAL DAMAGES, WHETHER BASED ON TORT, CONTACT, OR OTHERWISE, ARISING OUT OF OR IN CONNECTION WITH THIS MANUAL, INFORMATION CONTAINED HEREIN, OR THE USE THEREOF.

Copyright ©2002 StepUp Computing, LLC. All rights reserved. This manual may not be copied, photocopied, reproduced, translated, or converted to any electronic form in whole or in part without prior written consent of StepUp Computing, LLC.

StepUp Computing, LLC reserves the right to make any modification to this manual or the information contained herein at any time without notice. StepUp Computing, LLC assumes no responsibility for errors or omissions in this manual. For the latest modifications and more information, visit our website at <http://www.docunote.com>.

Part Number: GTP-M0211 Version 1.0

First Edition: November 2002

Printed in Korea

StepUp Computing, LLC.
1440 N. Harbor Blvd., Suite 305
Fullerton, CA 92835, U.S.A.

Contents

- Contents i**
- Notice to Users..... 1**
 - Safety Precautions 1
 - Notice of EMC Compliance 2
 - Safety Notices for the Power Cord 3
 - Disposal of Lithium Polymer Battery 3
- Introduction5**
 - Features..... 5
 - High-Performance Computing Power..... 5
 - Mobile Productivity..... 5
 - Wireless Mobility..... 6
 - Pen Computing 6
 - Standard Operating Systems Compatibility 7
 - Unpacking Your DocuNote 7
- Understanding Your DocuNote9**
 - Two Ways to Use Your DocuNote 9
 - Stand-alone Tablet PC On-the-Go..... 9
 - With an Optional Carrying Case and Keyboard..... 9
 - With an Optional Carrying Case and Keyboard..... 10
 - Locating Controls and Connectors 10
 - Locating Controls and Connectors 11
 - LED Indicators 13

Buttons	13
Connectors.....	14
Auxiliary Devices.....	14
Using the Battery	15
Charging the Battery.....	15
Installing the Battery	16
Managing the Battery.....	16
Connecting to a Power Source.....	17
Using an AC Adapter as a Power Source.....	18
Using a Battery as a Power Source.....	18
Starting Up Your DocuNote	18
Shutting Down Your DocuNote.....	19
Installing Operating System	21
How to Install Operating System.....	21
Drivers & Utilities	22
Installing Device Drivers	23
Installing Utilities	26
Using Utility Software.....	29
G2 Video Capture	29
Virtual Keyboard	31
PenOffice.....	32
Pivot.....	33
Customizing Your DocuNote.....	35
Using LCD Touch Screen.....	35
Basics	35
Calibration	36
Customizing E- Key Settings	36
Customizing E- Key Settings	37

Power management	38
Upgrading Your DocuNote.....	40
Memory Upgrade.....	40
HDD Upgrade	40
Advanced Options	42
CMOS Setup	42
Setting up System Password	43
CMOS Battery Replacement.....	44
Getting Help	45
Support Options.....	45
Returning for Repair Service	45
Appendices	47
Frequently Asked Questions	47
Product Specifications	51
DocuNote Main Unit	51
DocuNote Accessories	52

(This page is left blank intentionally)

Notice to Users

Safety Precautions

Please note the following instructions whenever you use or handle your DocuNote. These instructions will reduce the risk of electric shock, personal injury or damage to the unit.

- Do NOT use DocuNote near water, for example, near a bath tub, kitchen sink, etc.
- Keep direct sunlight or extreme heat away from the LCD screen. Viewing the screen away from direct sunlight reduces unnecessary glare.
- Unplug the unit from wall outlets before cleaning. Do NOT use liquid or aerosol cleaners. Use a damp cloth for cleaning.
- Use only the supplied power source with your DocuNote. If you lose it, please contact your authorized reseller for replacement.
- Do NOT place heavy objects on the LCD screen or the power cord.
- To reduce the risk of electric shock, do NOT disassemble the unit. Opening or removing parts may expose you to high voltage.
- Do NOT block the slots and openings of your DocuNote since they provide air circulation. Never insert any objects into the unit through slots and openings.
- Always handle your DocuNote carefully. Damage resulted from dropping may void your warranty.
- Do NOT operate your DocuNote in highly moisture-intensive or in hot or extreme cold environments.

- Do NOT operate your DocuNote immediately if its working environment changes suddenly. Example: moving DocuNote from the cold outside to warm inside. Sudden changes in temperature can cause condensation to form which may damage the unit.
- If you suspect any abnormal operation or hazardous condition, immediately power off your DocuNote and contact your authorized reseller for support.
- When service or repair work is required, contact your authorized reseller. Always have your DocuNote checked by a qualified service technician.

Notice of EMC Compliance

This equipment has been tested and complies with the limits for a Class B digital device, pursuant to part 15 of the FCC Rules. These limitations are designed to provide reasonable protection against harmful interference in a residential installation. This equipment generates, uses, and radiates radio frequency energy and if not installed and used in accordance with the instructions, may cause harmful interference to radio communications. However, there is no guarantee that interference will not occur in any particular situation. If this equipment causes harmful interference to radio or television reception, (which can be determined by turning the equipment off and on) please try to correct the interference by performing one or more of the following:

- Reorient or relocate the receiving antenna
- Increase the separation between the equipment and receiver
- Connect the equipment into an outlet on a circuit different from the one to which the receiver is connected
- Consult the dealer or an experienced radio/TV technician for help

Only peripheral products that comply with FCC Class B limits may be attached to this unit. Operation with a non-compliant peripheral may result in interference to radio and television reception.

All cables that connect to this equipment must be shielded and grounded. Operation with cables that are not shielded and grounded may result in interference to radio and television reception.

NOTE

Any changes or modifications not expressly approved in this manual could void the warranty for this equipment.

Safety Notices for the Power Cord

In the U.S. and Canada, the power cord must be a UL-listed detachable power cord (UL-listed in USA and CSA-certified in Canada). The power cord provided with DocuNote is UL-listed. Please refer to the back panel label for the UL-listed number. If you travel to a different country, the power cord should match the plug and voltage requirements for the local area. If you are unsure of the type of power cord to use in the area, or to purchase a power cord or AC adapter replacement, contact your authorized reseller or the local agency.

Disposal of Lithium Polymer Battery

Improper handling or installation of lithium battery can be dangerous and may result in an explosion. Replace only with the same or equivalent type battery recommended by the manufacturer.

Do not handle damaged or leaking lithium batteries. Promptly dispose of a used battery and keep it away from children.

(This page is left blank intentionally)

Introduction

Congratulations on your purchase of the DocuNote, a new standard of mobile business computing. DocuNote is a cost-effective Tablet PC for all your mobile computing requirements where wireless flexibility is a priority. DocuNote employs the full computing functionality of a notebook PC with the portability and ultra lightweight efficiencies found in PDAs. Using a stylus on an easy-to-use full-color touch screen, handwritten data and drawings can be integrated with text documents, and shared with others anywhere through wireless communications. DocuNote also includes a built-in digital color camera, speakers and microphone for clear audio communications and video conferencing. A high-capacity lithium polymer battery provides confidence in extended-use environments.

Features

High-Performance Computing Power

DocuNote is powered by a 667 MHz mobile processor, 128/256MB memory, a 10/15/20 GB hard drive, 4MB video memory with an external VGA port and USB connectivity for the user's most demanding mobile applications. A built-in digital color camera, 16-bit stereo, microphone and dual speakers provide clear audio communications and video conferencing. A convenient stereo jack is also included for users who wish to connect external speakers. A high-capacity smart lithium polymer battery provides confidence in extended use environments.

Mobile Productivity

DocuNote's small footprint configuration and only 2.3 lbs. makes it comfortable and convenient to perform an array of computing tasks in

virtually any location or environment. Using DocuNote's 8.4 inch SVGA TFT full color LCD touch screen, users can move and click with a stylus pen or with fingertips. The unit includes pivot software for easily rotating the display between portrait and landscape modes to accommodate your most suitable working position, especially while reading or creating full page text documents and Internet surfing. DocuNote includes three "hot" keys for launching a Web browser, a camera capture application for live images from the built-in digital camera, and one that you can customize for launching email programs or other desired functions. A four-way jog mouse and left-right buttons allow movement of the mouse cursor on the touch screen.

When combined with the optional leather carrying case, DocuNote becomes a convenient notebook replacement or personal workstation for use anywhere there is a level surface. The case unfolds and extends the back panel to stand on its own and attaches to DocuNote using a single connector. With a compact, but intelligently designed 77-key keyboard, you can have easy access to any typical typing requirements.

Wireless Mobility

DocuNote not only features a built-in 10/100 Base-T Ethernet port, but also supports wireless networking to maximize the value of its flexibility in any computing environment. A PCMCIA slot provides unencumbered connectivity for wireless LANs, modems and other devices, while an IrDA port accommodates wireless keyboards, mice or other wireless accessories.

Pen Computing

DocuNote is a fully designed Tablet PC for pen-based computing without a keyboard. The unit integrates true handwriting recognition and an easy-to-use full color touch screen interface for entering data. You can either "type" or use a stylus pen on DocuNote's virtual on-screen keyboard. Similar to traditional pen and paper, the stylus is used on-screen to easily enter handwritten notes, make annotations to documents, create drawings, or as a mouse for navigation. These handwritten mediums can then be easily integrated with text

documents and shared with others anywhere through the built-in wireless communications.

Standard Operating Systems Compatibility

DocuNote is fully compatible with Microsoft Windows® XP, Windows® 2000 Professional and many applications including the Microsoft Office productivity suite and customized vertical market applications. Currently included with DocuNote are software drivers to support these Windows operating systems.

Unpacking Your DocuNote

Your DocuNote comes complete with the Tablet PC device, a stylus pen, A/C adapter, a drivers/utilities CD and user documentation. When removing these items from the box, please ensure that all hardware and accessories are included. If any items are missing, please contact your authorized reseller for replacement.

- Main DocuNote Tablet PC Unit
- Stylus Pen
- AC Adapter
- Required Drivers & Utilities CD
- User's Manual



DocuNote Tablet PC



Stylus



AC Adapter



Drivers/Utilities CD



User's Manual

Depending on your selected options, your package may include:

- DocuNote leather carrying case with a built-in 77-key USB keyboard
- Microsoft Windows® 2000 or Windows® XP Professional with accompanying documentation
- PCMCIA wireless card with an accompanying manual



Leather Case

Understanding Your DocuNote

This section describes the ways you can use your DocuNote to take full advantage of the capabilities of this truly portable Tablet PC. Information is included on basic and specific functions, such as connecting the AC adapter to the unit, how to start and shut down your DocuNote, plus how to use the connectors and peripherals .

Two Ways to Use Your DocuNote

Stand-alone Tablet PC On-the-Go

You can use DocuNote without a keyboard as the perfect tool for browsing the Internet, accessing database information on a server, checking email and presenting a slide to your prospective customer. The only limit of its application is your imagination! With a convenient touch screen and a stylus pen, you can perform all the tasks you would normally do without a mouse and keyboard.



DocuNote On-the-Go

With an Optional Carrying Case and Keyboard

With the optional leather case, DocuNote becomes a convenient notebook replacement for use anywhere there is a level surface. DocuNote's carrying case enables the combined unit to transform into a personal workstation. You can unfold and extend the back panel of the case to stand on its own. With an exceptionally compact, but intelligently designed 77-key USB keyboard, you have easy access to all your typing needs such as creating a document on the run, writing email to your colleague or polishing up a presentation. Simply connect a little corded plug attached to the leather case into the keyboard connector on the side corner of DocuNote.

Step-by-Step Guide to Use Carrying Case and Keyboard



Step1



Step2



Step3



Step4

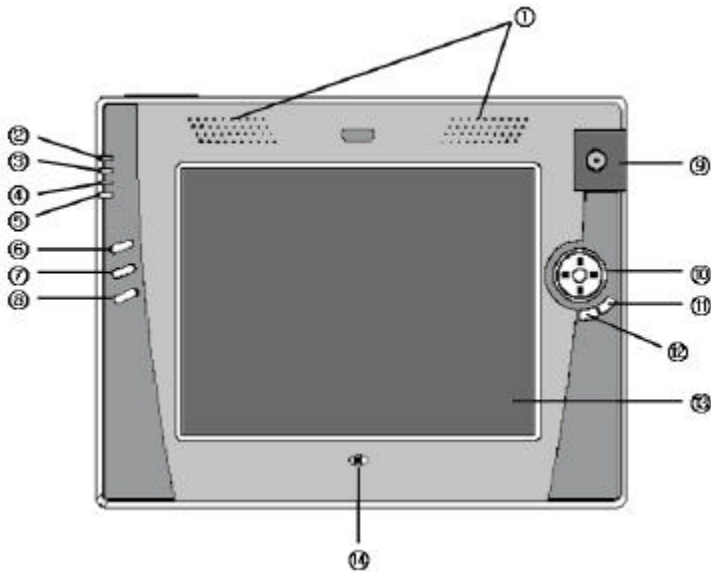


Step5



Step6

Locating Controls and Connectors



Front View

Speakers

Power Status LED

HDD LED

Network Connection LED

Battery Status LED

Web Browser Hot Key

User-defined Hot Key

Camera Capture Hot Key

Digital Camera

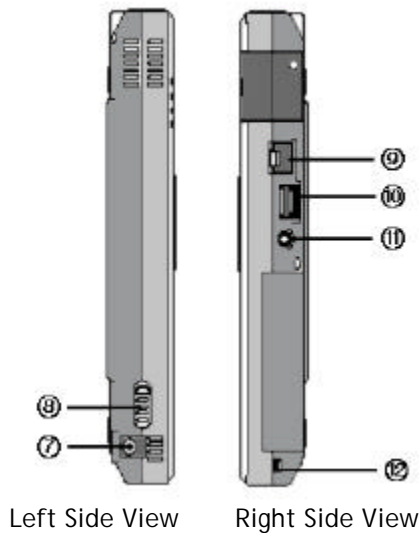
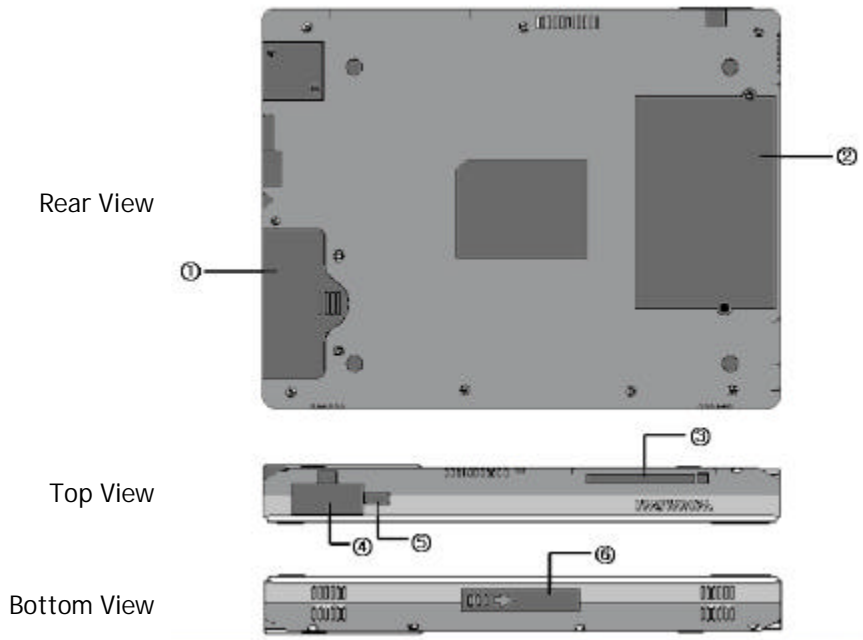
4-way Jog Mouse

Mouse Right Button

Mouse Left Button

Touch Screen

Microphone



- Hard Disk Drive Compartment
- Battery Compartment
- PCMCIA Type II Slot
- VGA Port
- IrDA Port
- Docking Connection
- DC-in Power Jack
- Power Switch
- 10/100 Base-T Ethernet Port
- USB Port
- Stereo Audio-out Jack
- Keyboard Connector

LED Indicators

- **Power Status LED:** displays power on and off
- **HDD LED:** displays status of the hard disk drive access
- **Network Connection LED:** displays status of network connection via 10/100 Base-T Ethernet port
- **Battery Status LED:** displays status of battery power

Buttons

- **Web Browser Hot Key:** launches Internet Explorer in Windows
- **User-defined Hot Key:** launches a user-defined application (performs Pivot screen mode rotation as a default)
- **Camera Capture Hot Key:** launches an application for capturing live images from the built-in digital camera
- **4-way Jog Mouse:** moves the mouse pointer
- **Mouse Left Button:** acts as a left mouse click
- **Mouse Right Button:** acts as a right mouse click



Web Browser
Hot Key



User-defined
Hot Key



Camera Capture
Hot Key

NOTE

All 3 hot keys can be customized for your preference. For instance, you can use the user-defined hot key to launch your email program instead of changing the screen mode between landscape and portrait. You can also customize the 4-way jog mouse to act as arrow keys (UP, DOWN, LEFT and RIGHT) and the mouse left/right buttons will perform as the ESC and ENTER keys, respectively. To customize settings for the hot keys and 4-way jog mouse, refer to the section “Customizing E-Key Settings.”

Connectors

- **PCMCIA Type II Slot:** connects to a PCMCIA wireless LAN, modem or other devices
- **VGA Port:** connects to an external monitor (DocuNote can connect to any standard CRT or LCD monitor. If the connector has retaining screws, be sure to tighten them to secure the connection.)
- **IrDA (Infrared Data Association) Port:** supports data communication with other infrared-enabled devices such as IrDA-enabled printers or notebooks
- **Docking Connection:** connects to the future docking unit, which will hold and support the DocuNote unit while working on your desk and provide extra expansion capabilities
- **DC-in Power Jack:** connects to an AC adapter (Make sure to use only the AC adapter supplied with your DocuNote.)
- **10/100 Base-T Ethernet Port:** connects to a network or the Internet via RJ-45 cable from a hub or DSL/cable modem
- **USB Port:** connects to a wide range of available USB devices, such as mice, keyboards and external CD-ROMs
- **Stereo Audio-out Jack:** connects to external stereo speakers. (DocuNote is equipped with built-in stereo speakers and a microphone. This connector will enhance your enjoyment while listening to MP3 files and sounds while playing games.)
- **Keyboard Connector:** connects to an optional USB 77-key keyboard enclosed in the leather carrying case (You can connect the keyboard to your DocuNote while it is running.)

Auxiliary Devices

- **Speakers:** provides stereo sound through left/right speakers
- **Microphone:** allows you to record sound and to use voice-enabled applications
- **Digital Camera:** supports capturing images (You can easily send pictures and live images over the Internet to a friend or colleague using the built-in digital camera.)

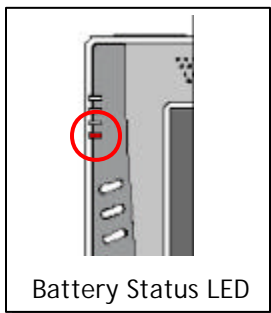
- **Touch Screen:** supports handwriting recognition and easy navigation by touching the screen (A stylus pen is provided. Please do NOT use any sharp objects that may damage the screen.)

Using the Battery

The battery that comes with DocuNote is already installed into the unit's battery compartment, but it is not fully charged. It is important to fully charge the battery before your first use of DocuNote.

Charging the Battery

The battery will be charged when you connect the AC adaptor to the DocuNote unit in either a powered-on or -off mode. The Battery Status LED will be lit green while charging. Once the battery is fully charged, the green light turns off. When the battery is low, the Battery Status LED light turns red to signal that DocuNote needs to be recharged.



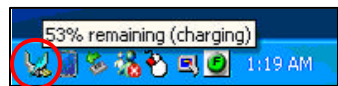
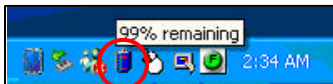
No Light: battery is fully charged
(While DocuNote runs on the battery, it stays unlit until the battery is low.)

Green: battery is being charged

Red: low battery

Red/Green Alternating: battery is extremely low (It will also occur during first 3 minutes when you charge a fully depleted battery.)

The battery status can also be monitored through the battery indicator in Window's system tray.



Installing the Battery

In some cases you may need to install the battery or replace an old battery with a new one. To install the battery, place the DocuNote's display on a flat surface. It is recommended that you place a soft cloth underneath to prevent scratches on the display. Please follow the below steps to insert or change the battery.

NOTE

You may skip this section if the battery pack is already installed in your DocuNote.

To install the battery :

1. Power off your DocuNote
2. Place the DocuNote unit facedown on a level surface, locate the two screws on the back panel that secure the battery compartment and unscrew them
3. Disconnect the battery connector from the main unit if you are replacing the battery
4. Insert the battery into the battery compartment and attach the battery connector to the main unit
5. Secure battery compartment with the two screws previously removed

Managing the Battery

If the battery is continuously charged and discharged over a period of time, its total capacity will be shortened. When the battery power lasts only half as long, it is time to replace it with a new one. Please consult the authorized reseller regarding the purchase a new battery or additional batteries.

An occasional full discharge of the battery prior to charging can help keep its peak performance. Power management features in Windows

will also help conserve the battery power while in use. Please refer to the section “Utilizing Your DocuNote: Power Management” for enabling and configuring these options.

The low battery warning indicator will start when battery power falls below 10% of its fully charged capacity. You will have to save all current documents and switch to the AC power to continue to work. Otherwise, shut down DocuNote until you find an appropriate power source. However, after the low battery warning, you still have approximately 5 to 10 minutes to safely save your current work and power down the unit. (This time may be shorter depending on the applications you are running at the time). At extremely low battery conditions, the Battery Status LED will be lit red. Immediately switch to the AC adapter by connecting it to DC-in on the left side panel of your DocuNote. Once connected to the AC adapter, your DocuNote will automatically switch to AC power and start charging the battery at the same time.

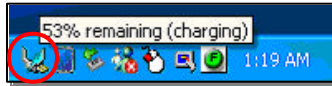
When there is a need to store the battery, you should store it at room temperature and avoid high temperatures where the battery will discharge at a faster rate.

NOTE

Battery power will usually deplete within about 3 to 4 weeks in storage.

Connecting to a Power Source

DocuNote works using either an AC adaptor or battery power. If you connect with the AC adapter, a Windows system tray will display a corded electric outlet icon. The AC adaptor will also recharge the battery while the unit is in use. The battery charge indicator will display a charging symbol over the corded electric outlet icon in the Windows system tray while charging. Once the battery is fully charged, the charging symbol will disappear.



Using an AC Adaptor as a Power Source

1. Plug the end of the AC adaptor into the DC-in port on the left side panel of your DocuNote
2. Plug one end of a power cord into the AC adaptor
3. Plug the other end of the power cord into an electricity outlet

Using a Battery as a Power Source

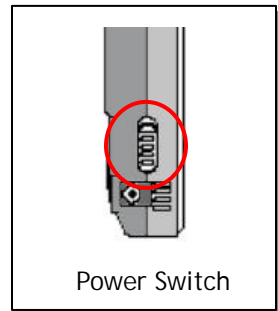
When using a battery as a power source, make sure the battery is in the battery compartment. If the AC Adaptor is connected to your DocuNote, simply disconnect the AC power to DocuNote. The DocuNote will automatically switch to battery power when the AC power is disconnected. Please make sure the battery is fully charged prior to using it first time to ensure that you will have full capacity of your battery. If you need to insert or change an existing battery, please refer to the section “Installing the Battery.”

Starting Up Your DocuNote

Connect a power source to your DocuNote. If you want to use battery power, check to see that the battery is securely placed in the battery compartment.

To turn your DocuNote on:

1. Check the available power source connected to DocuNote
2. Press and hold a power switch up until power light is on (The Power Status LED will light blue at this moment.)
3. Release the switch



Shutting Down Your DocuNote

When shutting down your DocuNote, follow these steps in the Windows.

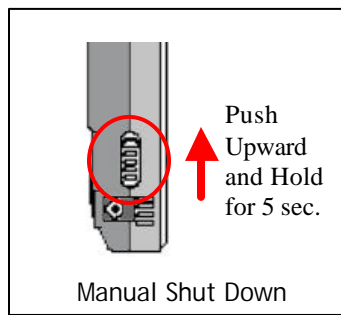
To turn your DocuNote off:

1. Click the Start button in the Windows
2. Click on Shut Down and the Shut Down Windows dialog box will appear
3. Select Shut Down / Turn Off
4. Click OK



You can also easily turn off your DocuNote by pressing the power switch up twice in consecutive manner. It will follow the normal Windows shutdown and turns DocuNote off.

In case your DocuNote is not automatically shut down, you need to manually shut down by a power switch on the left side panel of DocuNote. You can push a power switch up and hold it for five seconds to manually shut down DocuNote (*Please note this operation may result in data loss*):



(This page is left blank intentionally)

Installing Operating System

Your DocuNote may come pre-installed with a Windows operating system. If you need to re-install Windows, you will be required to install specific drivers for your DocuNote. In order to re-install to the original factory configuration, please follow the instructions below. It is highly recommended that you contact the authorized reseller before you proceed to these steps. The authorized reseller may customize DocuNote by adding additional applications or special features to the unit. This section will provide general instructions for installing a Windows operating system, device drivers and utilities.

How to Install Operating System

To install a new operating system or re-install the existing one, you need to have an external medium such as an external USB CD-ROM. (You can purchase an external USB CD-ROM from most electronics and computer retail stores.) Please consult with the authorized reseller where you purchased your DocuNote.

Please follow these general steps to install a new operating system or re-install the existing one. For specific instructions regarding your operating system, refer to the installation manual provided with the purchase of your operation system.

To install operating system:

1. Plug one end of the USB cable from an external USB CD-ROM into DocuNote's USB port (USB CD-ROM should have its own power source and turned on.)
2. Open the USB CD-ROM's tray, insert an installation CD of the operating system and close the USB CD-ROM tray

3. Turn on your DocuNote
4. DocuNote will automatically detect the installation CD and initialize the installation procedure
5. Follow the on-screen step-by-step instructions to finish installation

NOTE

Most installation procedures require rebooting of your system to perform necessary system configurations. You may need to install DocuNote's specific device drivers such as touch screen driver and extended key driver after you finish installing the operating system.

Drivers & Utilities

Your DocuNote includes a specially marked Drivers & Utilities CD that contains important device drivers and useful utility programs to take advantage of DocuNote's functions. You will need this CD whenever you re-install your operation system or repair any damage of your existing device driver or utility software. Please keep this CD in a safe place for later use.

NOTE

Drivers & Utilities CD contains only the device drivers and utilities for Windows® 2000 and Windows® XP. If you use or plan to use other operating systems such as Linux, please check with your authorized reseller or visit us at www.docunote.com to find out whether DocuNote has the latest drivers for your operating system. DocuNote may not support operating systems other than Windows® 2000 and Windows® XP.

The following are descriptions of the device drivers and utilities contained in the Drivers & Utilities CD.

NOTE

Please install device drivers first followed by the utility programs. If you are installing device drivers the first time after O/S installation, you should install in the order they listed and numbered to avoid unnecessary conflicts among the different drivers.

Device Drivers:

Extended Key	Device drivers for hot keys and 4-way jog mouse
Video*	Device drivers for video
Touch Screen	Device drivers for touch screen
Audio*	Device drivers for audio/sound
SB Camera	USB interface drivers for built-in camera

* Windows® 2000 only. For Windows® XP, video and audio devices will be automatically recognized and proper drivers will be installed.

Utilities:

2 Video Capture	Image capturing application for the built-in camera
Pivot	Landscape/portrait screen orientation application
Pen Office	Handwriting recognition application
Virtual Keyboard†	Virtual keyboard application

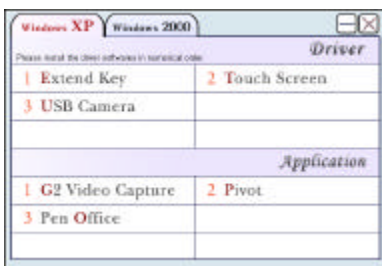
† Windows® 2000 only. For Windows® XP, On-Screen Keyboard is already installed within the operating system.

Installing Device Drivers

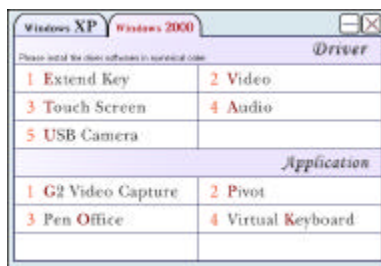
To install drivers & utilities for Windows® XP or Windows® 2000:

1. Plug one end of the USB cable from an external USB CD-ROM into DocuNote's USB port (USB CD-ROM should have its own power source and be turned on.)

2. Turn on your DocuNote
3. After Windows has started, open the USB CD-ROM's tray, insert a Drivers & Utilities CD and close the USB CD-ROM tray
4. Drivers & Utilities installation wizard will start automatically
5. Select your operating system by clicking on the tab
6. Click on the device or utility you would like to install
7. Installation wizard will open the installation program
8. Follow the on-screen step-by-step instruction to finish installation
9. Some installation procedures require automatic rebooting of the system to perform necessary system configurations



Drivers & Utilities for
Windows XP



Drivers & Utilities for
Windows 2000

NOTE

When installing the Touch Screen device driver, you should specify that the number of device is 1, accept the default settings for device #1, and then choose Semtech, ScreenCoder, USB as a device controller type.

After installing the touch screen drivers, you may need to customize the settings to work correctly with DocuNote. To customize touch screen settings:

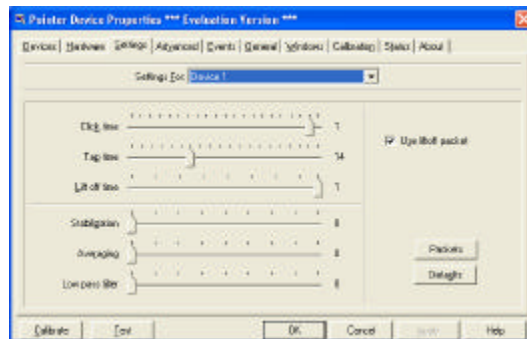
1. Go to Start > Programs > UPDD and click on Settings. The Pointer Device Properties dialog box will appear
2. Select the Settings tab
3. Using keyboard or arrow keys on the virtual keyboard, set the values as follows and click Apply to reflect these changes:

Click time: **1**

Tap time: **14**

Lift off time: **1**

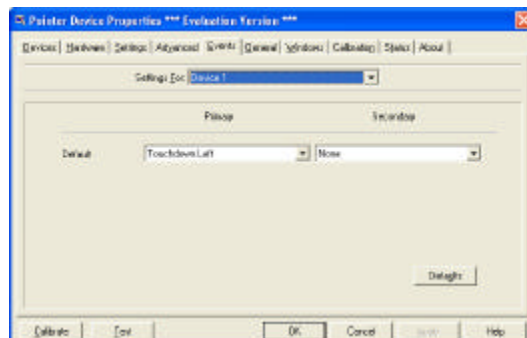
Place a check mark next to Use Liftoff Packet



4. Select the Events tab
5. Set Primary and Secondary values as follows and click Apply to reflect these settings:

Primary: **Touchdown Left**

Secondary: **None**

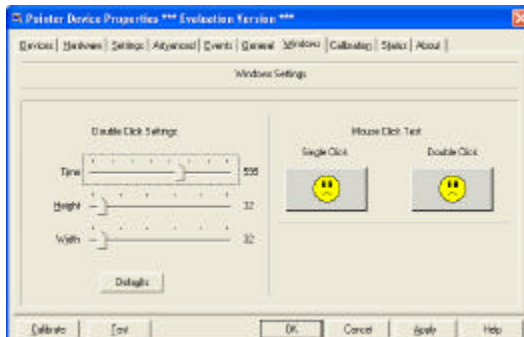


6. Select the Windows tab
7. Set the values as follows and click Apply to finalize the settings:

Time: **599**

Height: **32**

Width: **32**

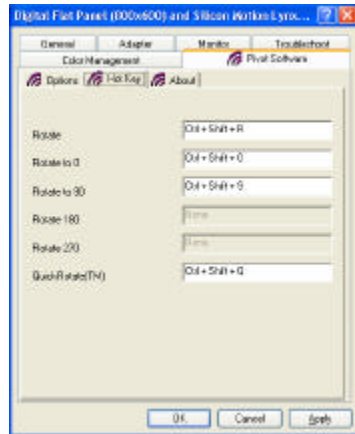
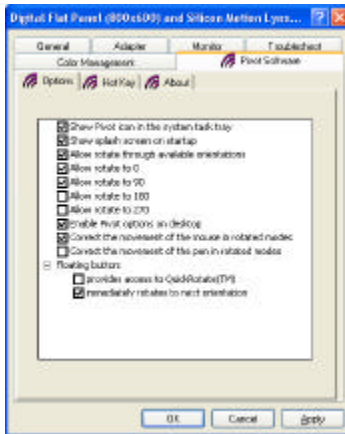


8. Close the USB Touch Screen Settings dialog box by pressing X mark on the window

Installing Utilities

After installing the Pivot utility software, you may need to customize the settings to work correctly with DocuNote. To customize Pivot settings:

1. Go to Start > Settings > Control Panel and double-click Display
2. Click on the Settings tab, and then select Advanced
3. Click on the Pivot Software tab
4. On the Option menu, uncheck the mark next to “Allow to rotate to 180” and “Allow to rotate to 270” (DocuNote does NOT support 180 and 270 rotation)
5. Check mark next to “provides access to QuickRotate™,”
6. Click on the Hot Key tab
7. Delete hot keys for “Rotate to 180”, “Rotate to 270”
8. Now DocuNote will be able to rotate to landscape/portrait modes



NOTE

*Included PenOffice software is a 30-day trial version. Please use the serial number provided on the CD to complete the installation. (PenOffice Serial No.: **docunote-1372-3212-09**) After evaluation period, you can register and purchase PenOffice through their website at <http://www.paragraph.com/penoffice.html>.*

(This page is left blank intentionally)

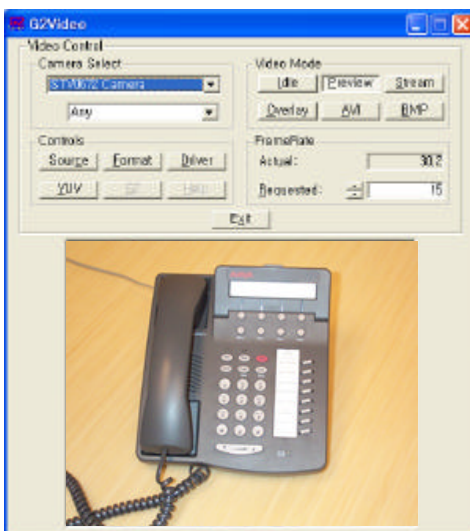
Using Utility Software

Your DocuNote comes with useful utility software to help you take advantage of many available features provided by DocuNote. This section provides an overview of this software.

G2 Video Capture

G2 Video is an image capturing application you can use to capture images via DocuNote's built-in digital camera. To capture images using the G2 video program:

1. Click on the G2Video icon on your Windows desktop or go to Start > Programs > G2Video and start the program
2. Choose STV0672 Camera at Camera Select
3. Captured images from the built-in camera will be displayed in the preview window at the bottom of the screen.



Controls:

Source	Controls video source settings
Format	Chooses video format
Driver	Displays video driver information
YUV	Controls YUV display settings

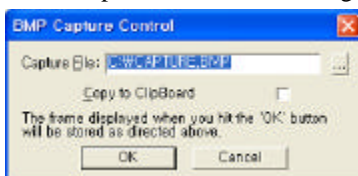
Video Mode:

File	Temporarily freezes the image on the preview screen
Preview	Displays live captured images via camera
Stream/Overlay	Disabled
AVI	Brings up AVI capture control captures moving images from camera into the AVI file format
BMP	Enables to capture a still image into the BMP file format

4. To capture moving images into the AVI (movie) file format, select AVI button under the Video Mode and type the file name to store on the AVI Capture Control dialog box. Click OK to start image capturing and click STOP to finish recording.

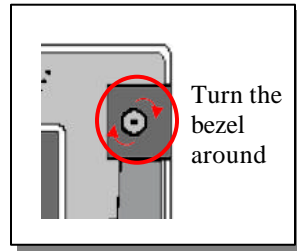


5. To capture a still image into the BMP (picture) file format, select BMP button under the Video Mode and type the file name to store on the BMP Capture Control dialog box. You can also copy the capture image to the Windows Clipboard and then transfer it to other programs by checking "Copy to Clipboard" box. Click OK to capture and save the image.



NOTE

You may have to adjust the camera focus by rotating the black lens bezel using a sharp object such as a needle. The lens bezel has two small holes for this purpose.



Virtual Keyboard

Virtual Keyboard allows you to enter text easily without any keyboard attached to your DocuNote. Simply tapping onto a character key of the virtual keyboard displayed on the screen will work similar to typing on an actual keyboard.



DocuNote Virtual Keyboard

In Windows[®] XP, Virtual Keyboard is provided with the operating system, called On-screen Keyboard. Go to Start > Programs > Accessories > Accessibility and select On-Screen Keyboard. To start Virtual Keyboard in Windows[®] 2000, click on the key button icon. Virtual keyboard will be displayed on the lower left corner of the screen.

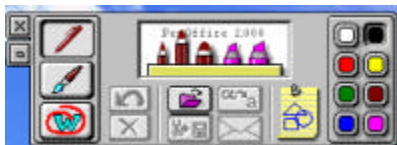


Windows On-Screen Keyboard

PenOffice

PenOffice is a combination of a powerful recognition engine and applications which allow you to extend the pen-based computer system. With PenOffice, DocuNote can recognize your natural handwriting and convert it directly into typed text in a document. PenOffice also allows you to save and e-mail a drawing, such as directions to your office. For detailed information and a manual for PenOffice, please visit their website at www.paragraph.com/penoffice.html.

To start PenOffice, click the Start button in the lower left corner of the screen, go to “PenOffice 2.2 English Edition” under “Programs” and click to launch the application. When PenOffice starts, three icons that represent different operating modes will appear on your system tray:



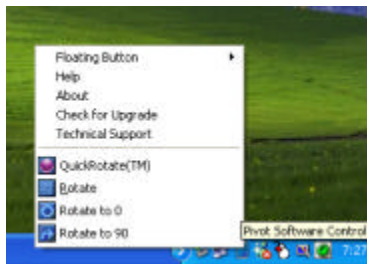
Recognition Mode	Your handwriting will be recognized and converted in text
ScreenDraw Mode	Allows you to draw on the screen using tools displayed
Word Markup Mode	Allows you to write comments on a Word or text document

Pivot

Pivot software allows you instantly change the screen orientation from a typical “landscape” setting to a “portrait” setting by rotating the display image to 90° or 270° viewing options. This feature will be most useful when you are surfing the Internet or reading a full page text document.

To change to portrait mode, click on the screen icon on the system tray and select Rotate to 90. To change back to landscape mode, click on the screen icon again on the system tray and select Rotate to 0.

Using QuickRotate, you can also rotate screen mode faster by clicking the mode icons displayed on screen from where you would like to view the screen.



(This page is left blank intentionally)

Customizing Your DocuNote

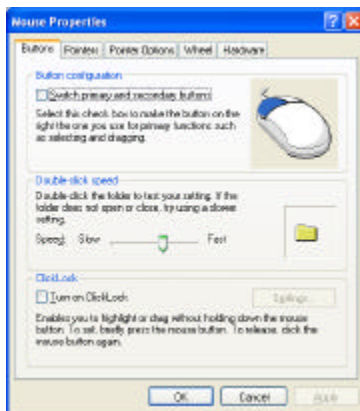
DocuNote is a fully designed Tablet PC for pen-based computing without a keyboard by incorporating LCD touch screen technology. Taking full advantage of wireless communications, you can capture or send live images or pictures over the Internet using DocuNote's built-in camera. This section will describe how to utilize and customize your DocuNote.

Using LCD Touch Screen

Basics

The LCD touch screen of DocuNote allows you to move and click with a stylus pen or your fingertip. Simply touch or drag a stylus pen to move the mouse pointer to the desired location. Tapping once will act as a single click and tapping twice acts a double click. You can also use the 4-way jog mouse and left/right buttons on the upper right panel of DocuNote to move the mouse cursor around on your screen.

You can customize the mouse pointer's shape, double clicking speed and other related settings in the mouse option from the Control Panel.



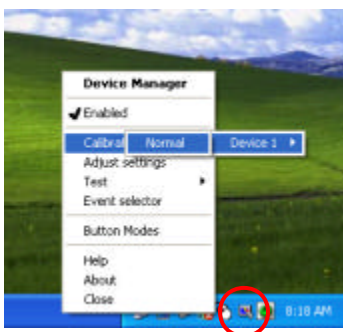
NOTE

Do NOT use any sharp objects on the touch screen other than the stylus. They can easily scratch the surface of the touch screen. Damage resulting from such incidents is not covered by DocuNote's warranty.

Calibration

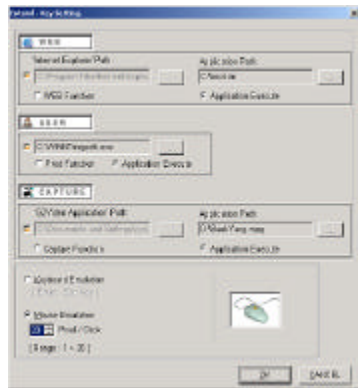
It is important to regularly calibrate the touch screen in order to have an accurate reading of your stylus position on the screen. Please run the calibration utility on the Windows system tray and follow the simple steps described below:

1. Right click on the calibration icon on the system tray
2. At the pop-up menu, select Calibrate > Device1 > Normal
3. Follow the on-screen instruction and click at each corner displayed on your screen
4. After clicking all four corners of the screen, it is now calibrated.



Customizing E-Key Settings

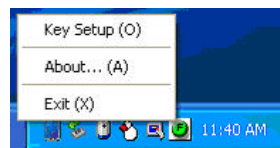
E-key allows you to customize the settings of three hot keys located on the left panel of your DocuNote. These three hot keys are designed to launch your most frequently used applications without going through several steps within Start menu. These keys will help you save time and work efficiently, especially while on the road. Small icons underneath the buttons show their primary applications. However, you can customize the hot keys to run any other applications.



You can also choose between two functional modes available for the 4-way jog mouse, keyboard and mouse emulation.

To open E-key Setting windows and assign a different application to a button:

1. Click on F button icon on the Windows system tray
2. Select Key Setup
3. As a default, three hot keys will launch following applications:



Web icon	Launches Internet Explorer in Windows
User icon	launches Windows Explorer
Capture icon	launches G2Video image capturing application

4. Click next to the button you want to change.
5. Browse the directory and select a target application (You may need to search .exe file for the specific application you want to run.)

6. Select an application, and then click Open (The target application file you selected will be shown next to the button.)
7. To choose between functional modes of 4-way jog mouse, click on either Keyboard Emulation or Mouse Emulation:

Keyboard Emulation Mode	The 4-way jog mouse acts like directional arrow: up, down, left and right. Right and left buttons act as the ESC and ENTER key, respectively.
Mouse Emulation Mode	4-way jog mouse acts like a mouse pointer*. You can move a mouse cursor as you would do with a regular mouse. It will also give you an option to change how fast the mouse cursor will move on the screen. The pointer speed in a range of 1~20 is measured by pixel/click. The higher the number, the faster it will move. It is recommended to set to 10 as a default.

* At default, 4-way jog mouse is set to Mouse Emulation mode.

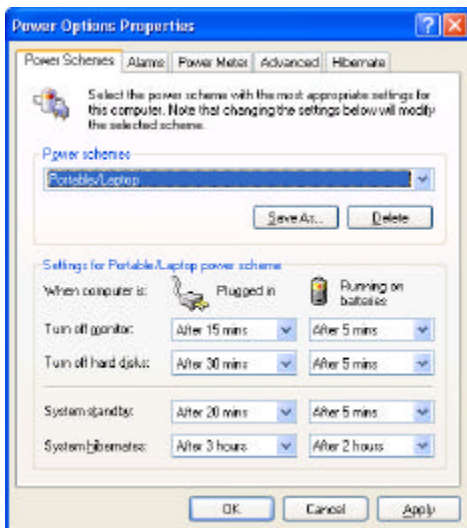
Power management

Your DocuNote was designed to use power efficiently without compromising system performance. Typically, the LCD screen, CPU and hard disk drive draw most of the power from DocuNote. You can adjust the settings through the power management options included in Windows to customize it for your work preference and to reduce unnecessary power consumption. Windows power management options let you choose various power schemes and options such as self time-off settings for a monitor, hard disk drive and other devices so you can control how the power is being used in your DocuNote. More detailed information on the power management options is available through on-line help in Windows.

To open power management options in Windows:

1. Click Start button in the Windows
2. Select Settings > Control Panel > Power Options
3. Make any necessary adjustment on each tab and click Apply

4. Close the Power Options dialog box



Windows Power Schemes include preset time settings that turn off DocuNote components or put your DocuNote in a low-power usage state. You can adjust the individual settings in a power scheme (Default setting is Portable/Laptop power scheme). Settings for Portable/Laptop power scheme include:

- Turn off your screen and hard disk drive automatically. Typically, you would do this for a short period to conserve power.
- If you plan to be away from your DocuNote for a while, you put your DocuNote on standby.
- Put your computer in hibernation. You would do this when you will be away from your DocuNote for an extended time or overnight. Hibernation turns off your DocuNote, but when you restart the computer, all programs and documents that were running when you turned off DocuNote are restored on the desktop.

To put your DocuNote in Stand-by Mode:

1. Click the Start button in the Windows

2. Click on Shut Down and the Shut Down Windows dialog box will appear
3. Select Stand By and click OK

Or

1. Press the power switch up momentarily
2. Release the switch

NOTE

While on standby, DocuNote uses less power than normal by switching to a low-power state and turning off devices including the screen and hard disk drive. When you want to use the DocuNote again, your desktop is restored exactly as you left it. However, standby does not save your desktop state to disk and you can lose unsaved information if power is lost. To activate DocuNote from a Stand-by Mode, follow the same steps as described in putting DocuNote on standby.

Upgrading Your DocuNote

Memory Upgrade

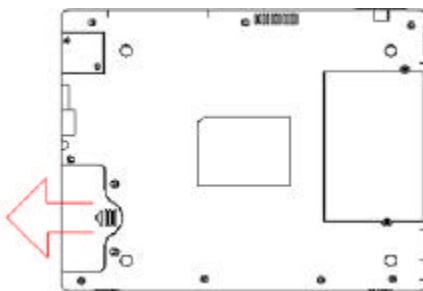
Your DocuNote is pre-installed with 128/256MB of memory to provide sufficient memory space for most personal and business applications. If you need to upgrade to a higher capacity memory module, please contact your authorized reseller for technical support.

HDD Upgrade

Your DocuNote uses a 10/15/20GB 2.5" hard disk drive. Contact your authorized reseller for upgrading to a new HDD. Damages caused during the following procedures may void your manufacturer's warranty coverage. Please read the following instructions carefully before you proceed.

To install a new HDD:

1. Power off DocuNote and unplug the AC adaptor and other devices from the unit
2. Place the DocuNote unit facedown on a level surface, locate two screws on the back panel securing HDD compartment and unscrew them
3. Discharge any static electricity from your body by touching a metal surface since static electricity can cause damages to delicate HDD electric components
4. Slide the HDD bracket away from the main unit
5. Remove the HDD from the bracket and unplug a connector pin attached to the HDD
6. Plug the connector pin back onto a new HDD
7. Replace and tighten the side-screws to secure the new HDD in place onto the bracket
8. Slide the HDD bracket into the HDD compartment of the main unit
9. Secure the HDD compartment with the screws previously removed



NOTE

You need to re-install the operating system once you install the new HDD. Please refer to the section “Installing Operating System” for further details.

Advanced Options

CMOS Setup

The CMOS Setup can change various system settings such as system password and booting order according to the user's preference. You may need to run CMOS Setup to configure some of settings when you add new hardware. Please read carefully when you need to change any settings. Incorrect changes in the CMOS Setup can cause a system error.

To change CMOS Setup settings:

1. Power on your DocuNote and wait for the system to boot up
2. Press <F2> key once the booting screen appears
3. CMOS main screen appears
4. Browse the menu and make any necessary changes
5. Once setup has changed, press <F10> to save and exit. DocuNote will reboot with new settings

Phoenix BIOS Setup Utility					
Main	Advanced	Security	Power	Boot	Exit
System Time : [09:52:32]		Item Specific Help <Tab>, <Shift-Tab>, or <Enter> selects field.			
System Date : [12/15/2001]					
▶ Primary Master [10056MB]					
▶ Primary Slave [None]					
▶ Secondary Master [None]					
▶ Secondary Slave [None]					
▶ Keyboard Features					
System Memory : 640KB					
Extended Memory : 111MB					
Summary Screen : [Enabled]					
F1 Help ↓ Select Item -/+ Change Values F9 Setup Defaults Esc Exit ← Select Menu Enter Select Sub-Menu F10 Save and Exit					

Setting up System Password

This will set up the password to your DocuNote in BIOS level. It will ask you the password each time you turn on your DocuNote. Once it is set, DocuNote will not start booting without a correct password.

NOTE

It is important to memorize the password you entered. If you cannot remember your password, DocuNote has to be reset at a hardware level by your authorized reseller. Therefore, use the system password feature discretely and keep your password in a safe place.

To set or remove the system password:

1. Go to the CMOS Setup screen by pressing <F2> key once the booting screen is on
2. Move to Security tab and select Supervisor Password tab in the menu
3. Type your password and press Enter
4. Type the same password one more time for confirmation, and then press Enter
5. When the message states that the password is saved, press Enter
6. Set the Password on Boot of the Security menu to *Enable*
7. Press <F10> to save your change and exit and DocuNote will reboot with new settings

Phoenix BIOS Setup Utility		
Main	Advanced	Security
Supervisor Password Is:	Clear	Item Specific Help
User Passwd Is:	Clear	
Set Supervisor Password	[Enter]	Supervisor Password controls access to the setup utility
Set User Password	[Enter]	
Password on boot:	[Disabled]	
Fixed disk boot sector:	[Normal]	
Diskette access:	[Supervisor]	
Virus check reminder:	[Disabled]	
System backup reminder:	[Disabled]	

F1 Help	↓ Select Item	-/+ Change Values	F9 Setup Defaults
Esc Exit	↔ Select Menu	Enter Select Sub-Menu	F10 Save and Exit

CMOS Battery Replacement

CMOS battery provides power to the real-time clock and CMOS RAM. The battery will last long enough and will not require replacement unless the system time is not maintained consistently over a period of time. If this condition happens, please contact your authorized reseller to replace the CMOS battery.

Getting Help

Support Options

If you have any technical questions or concerns about your DocuNote, it is recommended that you first contact the authorized reseller where you purchased your DocuNote. Technicians of the authorized reseller will be able to answer most of your questions and solve any problems. In addition, you can visit our Web site to find additional information and the latest drivers available for DocuNote. You may also email us directly at support@stepupcomputing.com or call the number below. You will need to provide the product serial number located on the back of your DocuNote. Please have the serial number ready when placing a call.

For technical support (in U.S.A. and Canada):

- Technical Support Line: 1-888-StepUp4 (1-888-783-7874)
- Hours: 10:00 a.m. – 5:00 p.m. PST (Monday - Friday)

Returning for Repair Service

In some cases, you may need to send your DocuNote for repair by our own technicians at StepUp Computing. Prior to sending your DocuNote to our repair facility, you will need to obtain a Return Merchandise Authorization (RMA) number. Please call our technical support department at 1-888-StepUp4 (1-888-783-7874) to make return arrangements and receive special instructions.

(This page is left blank intentionally)

Appendices

Frequently Asked Questions

1. HOW LONG THE BATTERY WILL LAST?

The DocuNote battery is a lithium polymer. After it is fully charged, the battery will last 3 to 4 hours depending on the power management settings and the types of applications you are running.

2. WHAT HAPPENS TO DOCUNOTE WHEN THE BATTERY IS LOW AND IS NOT CONNECTED TO THE AC ADAPTER?

Default settings in Windows will give you a warning message when the battery power falls to 10% of its capacity. At 3% of its capacity, DocuNote's battery indicator will light red and green alternatively. When DocuNote recognizes the lowest battery level, it will automatically go into hibernation and shut itself off. You can find the power source to connect AC power later and power up DocuNote to start from where you left off.

3. WHAT IS THE CRITICAL BATTERY LEVEL?

The critical battery level is when DocuNote will automatically save the settings and enter into hibernation. It occurs at below 3% of battery capacity after the battery indicator's warning red/green light.

4. HOW MANY MINUTES ARE LEFT WHEN THE WARNING STARTS?

When the battery indicator light flashes red and green, you will have about 3 to 5 minutes to save your work depending upon applications you are running at the time and other related factors such as power management settings. It is recommended that you save all current documents and shut down DocuNote normally.

5. WHEN DO I NEED TO REPLACE THE BATTERY?

The DocuNote lithium polymer battery usually lasts a year or more depending on usage. However, when you begin to realize it only lasts half as much as it used to even after fully charged, it is time to replace the battery. To keep the battery life longer, try to completely discharge the battery by running DocuNote until it automatically shuts down and then recharge it fully.

6. HOW DO I PUT DOCUNOTE ON STANDBY?

You can put your DocuNote on Stand-by Mode through the Windows Shut Down dialog box. Choose "Stand by" instead of "Shut down." DocuNote will switch to a low-power state and turns off power to the HDD and video to conserve power. You can also allow DocuNote to be in a Stand-by Mode by pressing the power switch up once momentarily.

7. HOW LONG CAN I PUT DOCUNOTE ON STAND-BY MODE?

It depends on the battery power left on DocuNote. In Stand-by Mode, DocuNote will usually hold the information until the battery is depleted.

8. HOW CAN I PRINT A DOCUMENT?

DocuNote is well designed to work with existing networks by providing built-in support for connectivity such as wireless networking PCMCIA devices, Ethernet port, IrDA, and USB port. If you are connected to a network, you can send a document to a network printer. If your printer has an IrDA capability, you can utilize the IrDA port built in DocuNote (see your printer's manual to configure its port). You can also use many USB printers. Just plug a USB cable from the printer into the USB port of DocuNote. Most printers will automatically be detected and ready for use.

9. WHICH OPERATING SYSTEMS ARE SUPPORTED BY DOCUNOTE?

DocuNote will support both Windows® 2000 Professional and Windows® XP (Home/Professional) at the time of its first release. In the near future, DocuNote will be ready for Linux-based operating systems, such as Lindows.

10. CAN I CHANGE THE BRIGHTNESS OF THE LCD SCREEN?

The brightness of the LCD is fixed at the hardware level for optimal display and cannot simply be adjusted.

11. HOW MUCH IS MEMORY UPGRADE POSSIBLE?

DocuNote has maximum 256MB SoDIMM memory and is set by the factory. If you need to upgrade to more memory, please consult the authorized reseller and inquire about special options.

12. HOW CAN I CLEAN THE TOUCH SCREEN?

When cleaning the touch screen, please take care not to scratch the LCD screen. Use only a clean, soft, lint-free cloth lightly dampened in water. Avoid ammonia or alcohol based glass cleaners. These cleaners can damage your LCD screen.

13. CAN I CONNECT TO AN EXTERNAL MONITOR?

DocuNote comes with an external VGA port so you can easily display to an external monitor for sharing the screen view. Simply connect to the VGA port with a monitor cable from any standard CRT or LCD monitor. If the connector has retaining screws, be sure to tighten them to secure the connection.

14. WHY DOES DOCUNOTE BECOME HOT, ESPECIALLY ALONG THE BOTTOM?

It is common for the unit to become warm due to the heat from the CPU and LCD screen.

15. HOW CAN I PRINT THE SCREEN?

The optional 77-key USB keyboard does not have a print-screen button. However, you can capture screen shots using a Virtual Keyboard or the On-screen Keyboard's print-screen key.

16. HOW CAN I CHANGE THE VOLUME?

You can change the system's volume through Windows taskbar. Click on the speaker icon in the taskbar. The volume bar will appear and you can slide the bar to up/down to change the volume. If you do not see the icon, go to Control Panel > Sounds and Audio Devices and select the "Place volume icon in the taskbar" check box. The icon will appear in the taskbar.

17. CAN I USE OTHER STYLUS PENS INSTEAD OF THE SUPPLIED PEN?

The stylus pen provided with DocuNote can be easily replaced with any stylus pens available for small PDAs or similar devices. Please do not point on the touch screen with any sharp object that might scratch the screen.

18. CAN I USE HANDWRITING RECOGNITION SOFTWARE?

PenOffice 2.0 is included to take a full advantage of DocuNote's pen computing capabilities. It is 30-day trial version that you can purchase at the end of the trial period.

19. WHAT CAN I DO WHEN DOCUNOTE IS NOT RESPONDING OR SHUT DOWN?

Sometimes, an application may not respond to your input due to internal errors. First, try to press CTRL+ALT+DEL at the same time to bring up the Windows Security dialog box and click on Task Manager. Task Manager will display which application is causing the problem and not responding. Terminate that specific application and close the window. If it does not work, you have to manually shut down and all unsaved information will be lost. To manually shut down the DocuNote, push a power switch up and hold it for five seconds.

20. WHAT IS RESOLUTION OF THE SCREEN?

Your DocuNote is set to 800x600 resolution. It is the best viewing resolution for the size of your LCD.

Product Specifications

DocuNote Main Unit

SKU#: B1660*

Processor	667MHz Transmeta Crusoe TMS5600
Memory	256MB SDRAM (133MHz SoDIMM)
Hard Disk Drive	20GB 2.5" HDD Ultra ATA
Display	8.4" TFT color LCD (800x600), analog resistive 4 wire touch screen
Video	SVGA, 4MB video memory, external VGA port
Audio	AC 97 16-bit stereo audio, built-in microphone and two speakers, external stereo jack
Camera	250K pixel built-in USB camera
Network	Built-in 10/100 Base-T Ethernet (RJ-45 port)
System Ports	1 USB port, 1 PCMCIA Type II slot, 1 IrDA (max. 4Mbps)
Keyboard/Mouse	Virtual on-screen keyboard support, 4-way jog mouse, 2 mouse buttons, 3 hot keys, optional leather carrying case with built-in 77-key USB keyboard
Operating System	Optional Microsoft Windows® 2000 Professional or Windows® XP
Docking Interface	Port availability depends on selected options; Support for the desktop environment with 4 USB ports, PS/2 keyboard and mouse ports, 1 VGA port, 1 parallel port, 1 serial port, 10/100 Base-T Ethernet RJ-45 port
Environmental	Operating temperature: 32~122 °F (0~50 °C); Humidity: 10~90%
AC Adapter/Battery	Auto-sensing AC 100-240V 50-60Hz, DC
Power Consumption	15W
Dimension/Weight	10 1/8"(W) x 7 7/8" (D) x 1" (H) (253mm x 187mm x 26mm); 2.3 lbs (1kg) (without battery)

* Specifications in other models may differ.

DocuNote Accessories

Leather Case	Carrying bag with a built-in 77-key USB keyboard (1.1 lbs)
Docking Station	Available soon
Vehicle Power Adapter	Available soon



EXPANDING YOUR COMPUTING HORIZON
www.stepupcomputing.com