

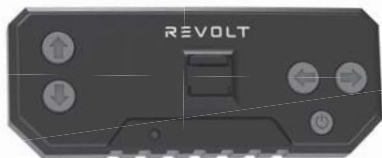


5+

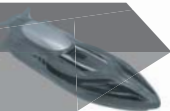
User Manual

CAN CRUISERS BOATS

TG1030



**FULL FUNCTION
IN ALL
DIRECTIONS**



2.4GHz Remote control

PLEASE READ THIS INSTRUCTION MANUAL CAREFULLY BEFORE USE.

The materials, specifications, parts and packaging mentioned in this manual are for reference purposes only. We are not responsible for any changes made to this printed material, nor are we able to inform customers of any updates or changes. Please refer to our website: R3VOLT.COM for the latest information.

Important Safety Information

Thank you for purchasing a REVOLT product. To ensure the proper operation of your boat, please read the following information carefully.
Before using the product for the first time, please read the instruction manual thoroughly and store it in a safe place for future reference.

Safety Information:

- *Keep small parts out of reach of children.
- *Do not store the battery in high-temperature environments (e.g., near open flames or heating devices).
- *Children must be supervised by an adult while operating the boat. The boat should always remain within the sight of the driver (or instructor).
- *Do not charge non-rechargeable batteries. When installing or replacing batteries, ensure the correct polarity is connected. Do not mix old and new batteries or different types of batteries.
- *Do not short-circuit the battery terminals.
- *If you do not plan to use the boat for an extended period, remove the batteries from both the boat and the remote control to prevent corrosion of the circuits.
- *After use, ensure the boat and remote control are turned off, and remove the batteries from the remote control.
- *The packaging and this manual contain important information and should be stored in a safe place for future reference.

Maintenance and Care:

- *Regularly clean the product with a clean, soft cloth.
- *Avoid exposing the product to direct sunlight or high temperatures.
- *When finished playing, wipe down with a dry cloth.
- *Do not leave the boat in the water for extended periods of time after playing.

About this product

Specifications

Remote controlled boat

Weight	214 g
Canister: 20.4×8×8 cm	Boat: 13.8×5×3.4 cm
Remote control range	About 25 meters
Operating time	About 25 minutes (Battery life may vary between battery brands.)
Battery Requirements	2×1.5V "AAA" batteries (not included)

Remote control

Operating frequency	2.4 GHz
Battery Requirements	2×1.5V "AAA" batteries(not included)

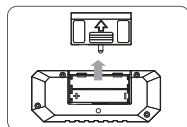
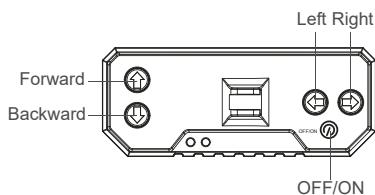
OPERATING INSTRUCTIONS

Opening the canister and separating the boat from the Remote Control

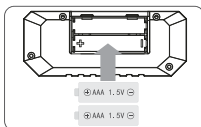
- ① Press the "⏻" button on the top of the lid and remove the lid



- ② Slide the remote control off the boat in the direction of the arrow.



- ① Use a screwdriver to remove the screw. Press and slide the battery cover down to open.



- ② Install 2x 1.5V AAA batteries into the battery compartment observing the correct polarity for the batteries as illustrated inside the battery compartment.



- ① First, unscrew the screw



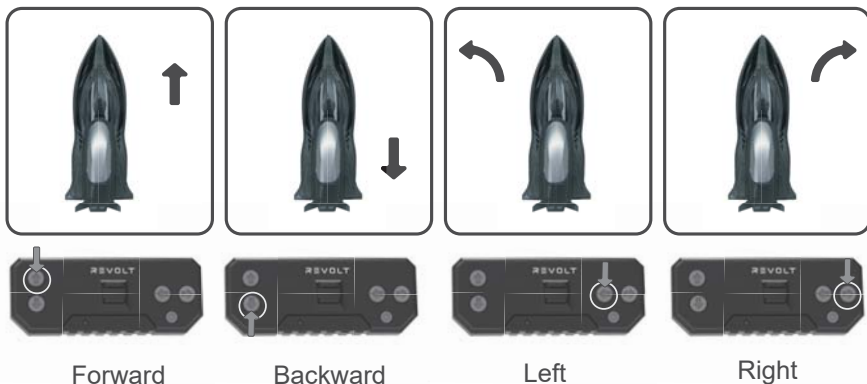
- ② Install "1.5V AAA" X2 Batteries
③ Replace lid and tighten screw to close.



PAIRING INSTRUCTIONS

1. Turn on the remote controller and the remote controller's light will flash quickly.
2. After installing batteries in the boat, simply place the boat in water and the boat will automatically turn on.
3. When the remote control's light goes from flashing to solid, it indicates the pairing was successful.

Driving operation instructions



CONTENTS:

- Remote Control Boat
- Remote Control
- Canister for Storage
- Instruction Manual

Warning!

*This product must be assembled and used under the direct supervision of an adult.

*This product contains small components that present a choking hazard if swallowed; this product is not suitable for children under 5 years of age.

This device complies with Part 15 of the FCC Rules.

Operation is subject to the following two conditions:

(1) this device may not cause harmful interference, and (2) this device must accept any interference received, including interference that may cause undesired operation.

Changes or modifications to this unit not expressly approved by the party responsible for compliance could void the user's authority to operate the equipment.

NOTE: This equipment has been tested and found to comply with the limits for a Class B digital device, pursuant to Part 15 of the FCC Rules. These limits are designed to provide reasonable protection against harmful interference in a residential installation. This equipment generates uses and can radiate radio frequency energy and, if not installed and used in accordance with the instructions, may cause harmful interference to radio communications. However, there is no guarantee that interference will not occur in a particular installation. If this equipment does cause harmful interference to radio or television reception, which can be determined by turning the equipment off and on, the user is encouraged to try to correct the interference by one or more of the following measures:

- Reorient or relocate the receiving antenna.
- Increase the separation between the equipment and receiver.
- Connect the equipment into an outlet on a circuit different from that to which the receiver is connected.
- Consult the dealer or an experienced radio/TV technician for help.

This device and its antenna(s) must not be co-located or operation in conjunction with any other antenna or transmitter.

Radiation Exposure Statement

The device has been evaluated to meet general RF exposure requirement in portable exposure condition without restriction.

SYMA MODEL AIRCRAFT INDUSTRIAL CO.LTD

Address: Intersection of Xingye Road No. 2 (West side) and Xingye Road (North side), Laimei Industrial
Park, Chenghai District, Shantou, Guangdong Province, China
Sales hotline: 0754-86980668, After-sales hotline: 0754-86395095
Fax: 0754-86395098 Zip code: 515800

The manufacturer the right to the final interpretation of this instruction manual.