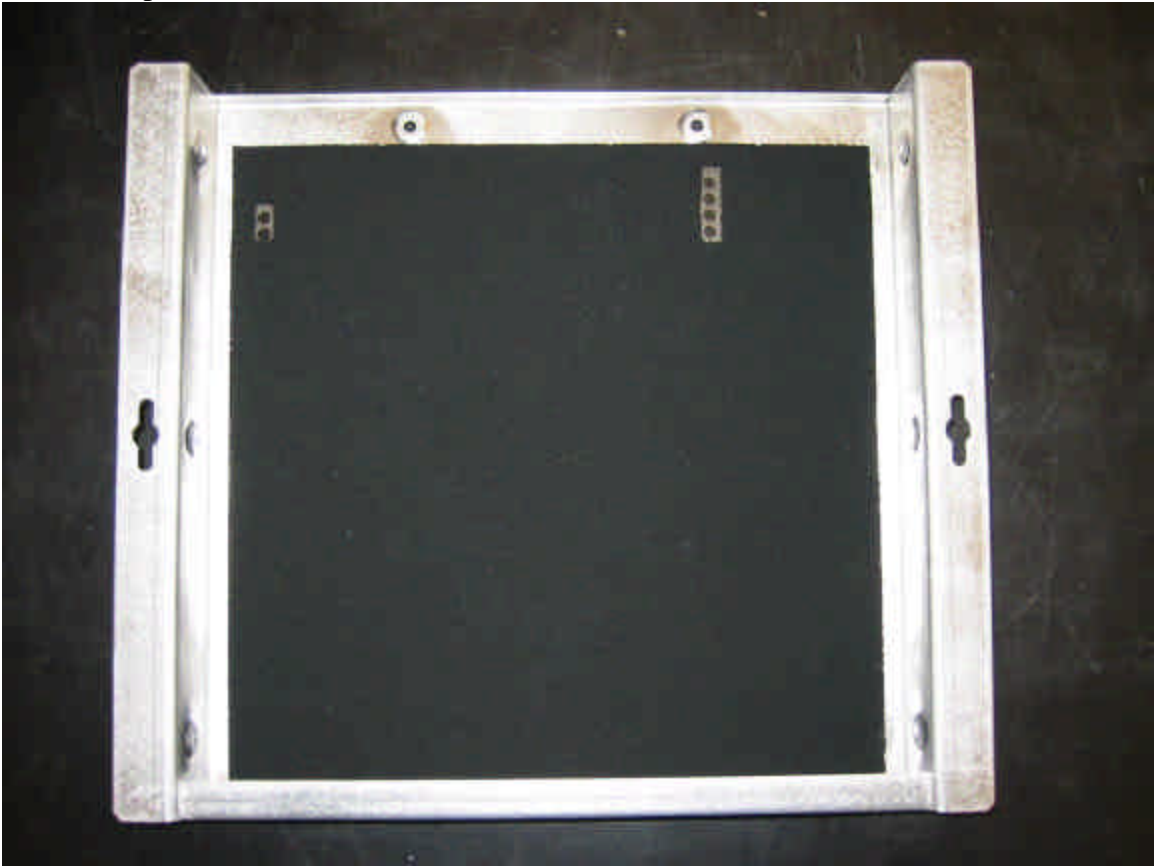


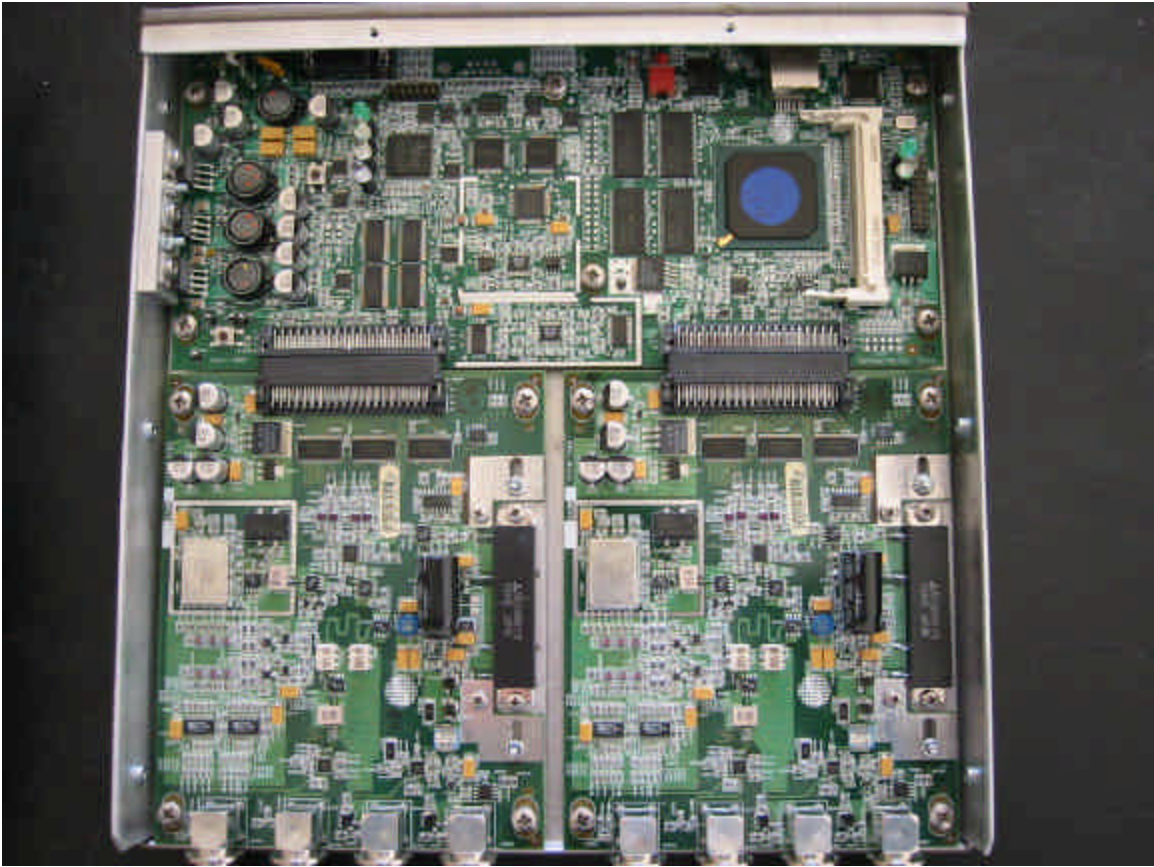
Internal Photos, Reader #1  
Chassis Bottom



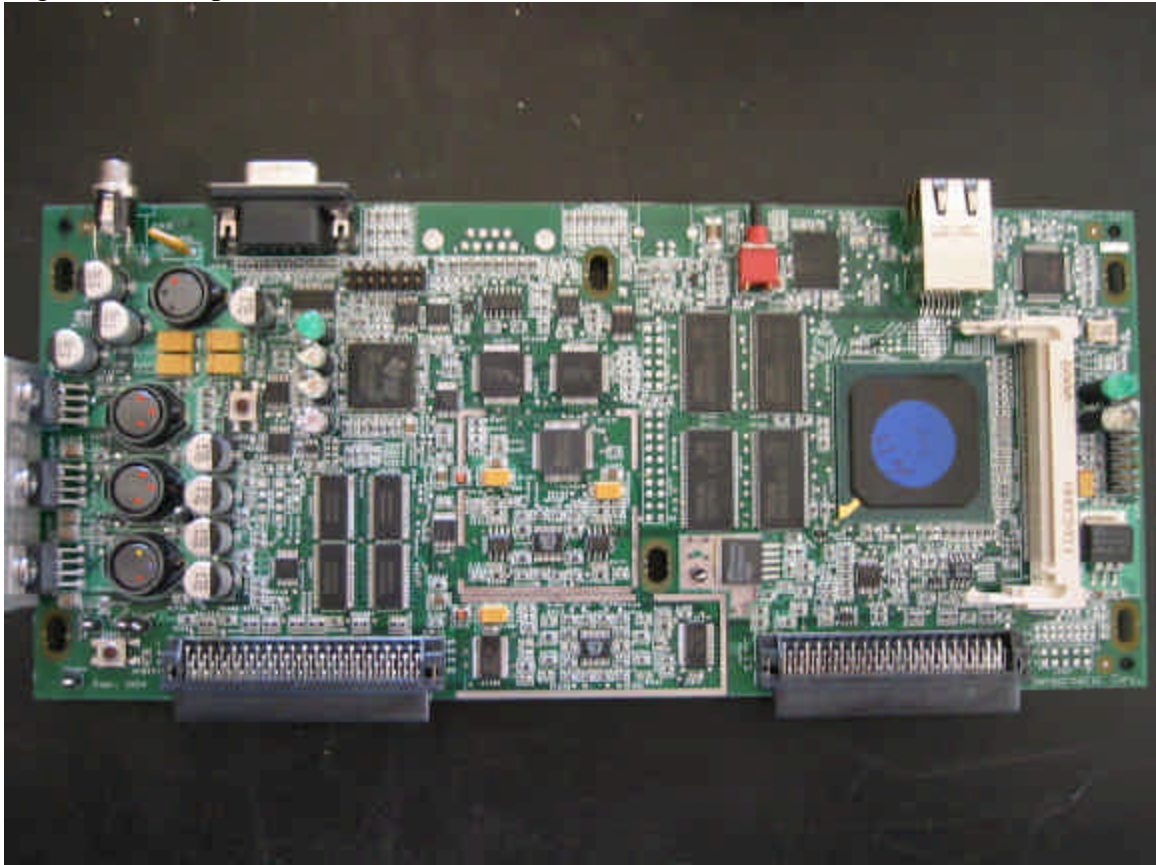
Chassis Top



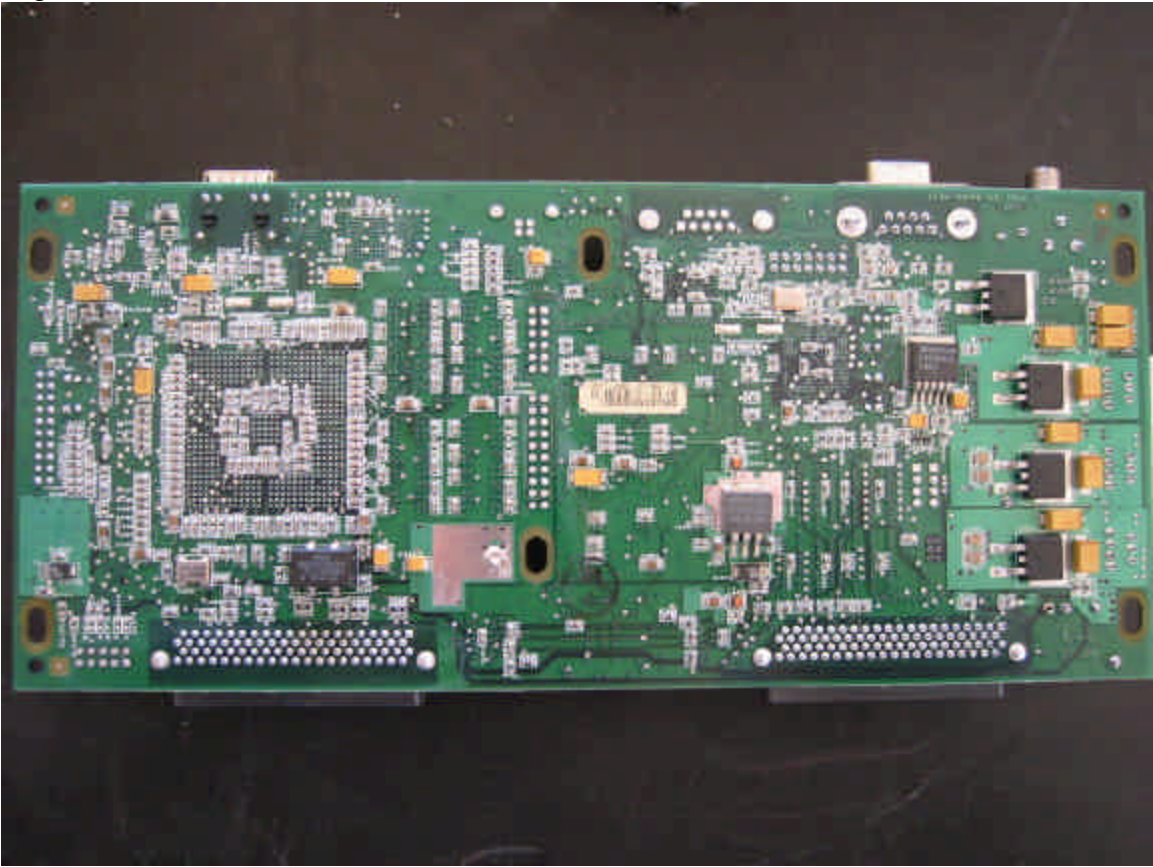
Boards in Chassis



Digital Board top

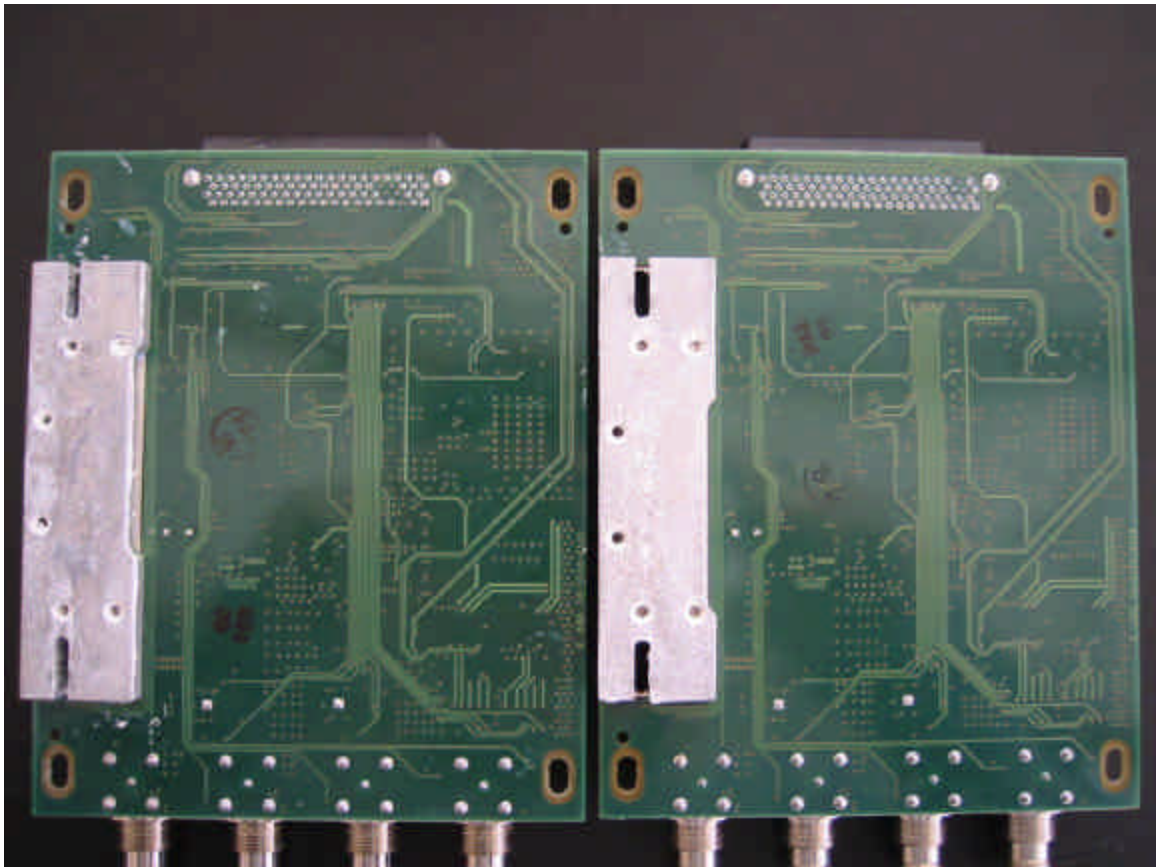


Digital Board Bottom

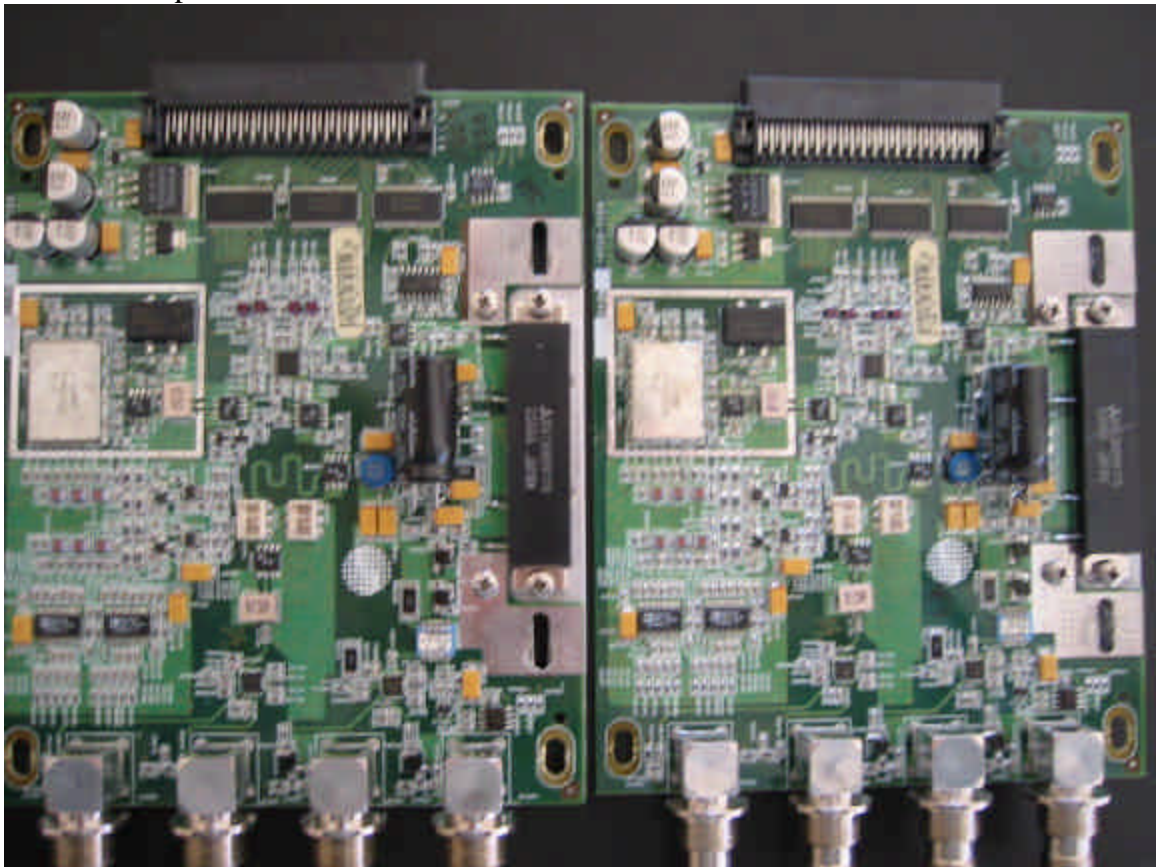




RF Boards bottom



RF Boards top



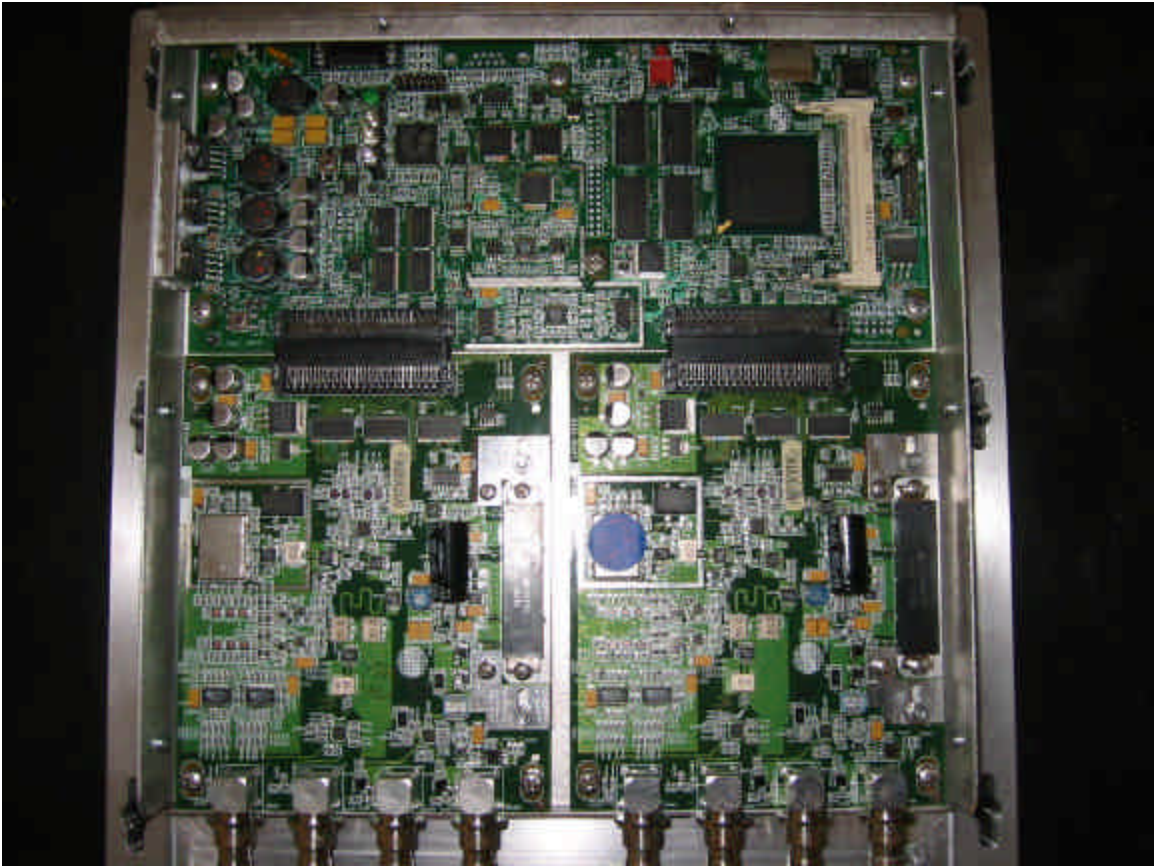
Internal Photos, Reader #2

Chassis top (Note that chassis bottom is identical to Reader #1 chassis bottom)





Boards in Chassis (Note same as Reader#1)



All boards in Reader #2 are identical to those in Reader #1