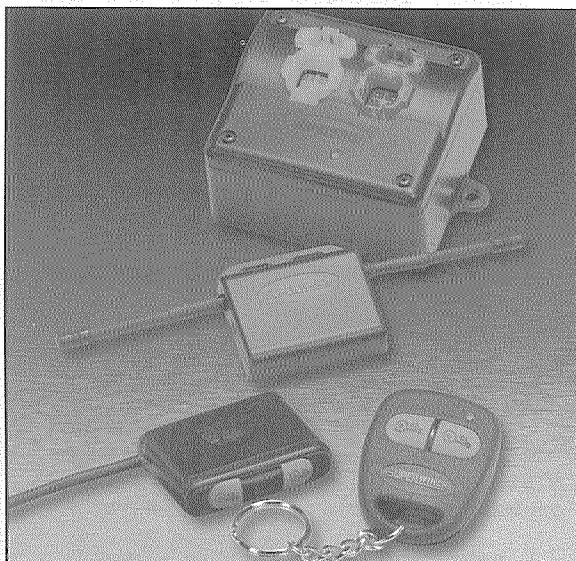


利字

# SUPERWINCH®



## OWNER'S MANUAL

INSTALLATION • OPERATION • MAINTENANCE  
SAFETY PRECAUTIONS • REPAIR PARTS

### 06202

Wireless and Handle Bar  
Winch Control

**▲ CAUTION**

**READ AND UNDERSTAND THIS MANUAL  
BEFORE INSTALLATION AND OPERATION  
OF YOUR SUPERWINCH PRODUCT.**

Superwinch, Inc.  
Winch Drive  
Putnam, CT 06260  
U.S.A.  
Tel. (860) 928-7787  
Fax (860) 963-0811

Superwinch, Ltd.  
Abbey Rise, Whitchurch Road  
Tavistock, Devon PL 19 9DR  
England  
Tel. (1822) 614101  
Fax (1822) 615204

**If you have any questions  
or problems with this  
product, please call  
1-877-257-7888.  
Do not return product  
back to store.**

## **SAFETY PRECAUTIONS**

The responsibility for safe operation of this switch ultimately rests with you, the operator. Read and understand all safety precautions and operating instructions before installing and operating the winch. Careless switch operation can result in serious injury and/or property damage.

Throughout this manual, you will find notations with the following headings:

### **DANGER**

*Indicates an imminently hazardous situation which, if not avoided, will result in serious injury or death.*

### **WARNING**

*Indicates a potentially hazardous situation which, if not avoided, could result in serious injury or death.*

### **CAUTION**

*Indicates a potentially hazardous situation which, if not avoided, may result in minor or moderate injury. This notation is also used to alert against unsafe practices.*

**Note:** Indicates additional information in the installation and operation procedures of your winch.

## **KIT INCLUDES**

- 1 – Set, red and black battery power leads
- 1 – Set, blue and yellow winch leads
- 1 – Solenoid
- 2 – Key chain wireless transmitters
- 1 – Power distribution module
- 1 – Antenna
- 1 – 2 pin green power connector with fuse holder
- 1 – 2 pin white solenoid connector
- 1 – Black jumper
- 1 – Hardware kit
- 1 – Solenoid mounting plate

## SWITCH WIRING INSTRUCTIONS

**⚠ DANGER** Do not attempt to install wiring when the battery is connected. Automotive batteries contain flammable and explosive gases. Wear eye protection during installation and remove all metal jewelry. Do not lean over battery while making connections.

Check to ensure that the vehicle ground and positive leads from the battery are disconnected before performing any electrical work.

1. Find a location to mount the power distribution module and the solenoid, i.e. under seat or in storage box. See Fig. 1

1a. If mounting solenoid to frame, use mounting plate and u bolts. See Fig. 2

**⚠ CAUTION** Be sure to keep components away from moving parts, sharp objects, or hot areas of the machine.

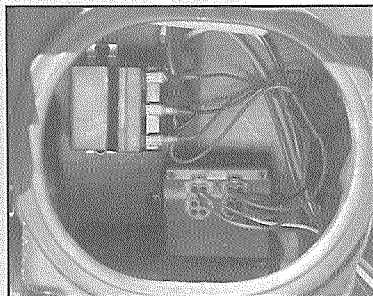


Figure 1

**Note:** Mounting can be done with either self-tapping screws or with cable ties.

**⚠ CAUTION** When using self-tapping screws, make sure of what you are screwing into, that there are no components, wires, or parts that can be damaged.

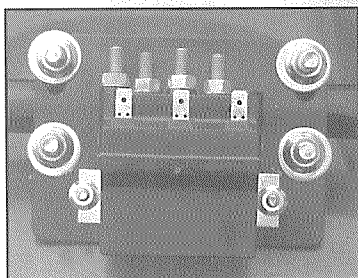


Figure 2

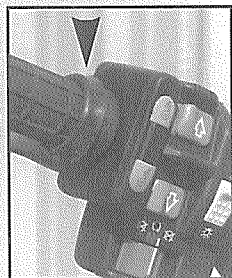


Figure 3

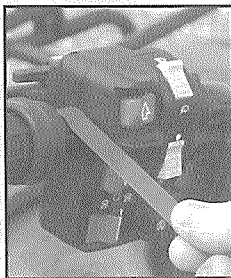


Figure 4

2. Roll back handle grip for positioning handle bar switch. See Fig. 3

2a. Apply 2 sided tape, only a single layer is needed, on handle bar where switch will be mounted. See Fig. 4

2b. Run handle bar switch wire down handle bar to the Power distribution module. Attach wire with cable ties.

2c. Route the wiring harness, attaching the harness to hard points on the vehicle with cable ties.

**⚠ WARNING** Ensure that the wiring harness does not interfere or come in contact with any hot or moving engine, suspension, steering, braking or exhaust parts.

**⚠ WARNING** Always disconnect battery before installing switch

2d. Match color and plug configurations accordingly.

2e. Connect yellow with red stripe wire to an ignition source using supplied connectors.

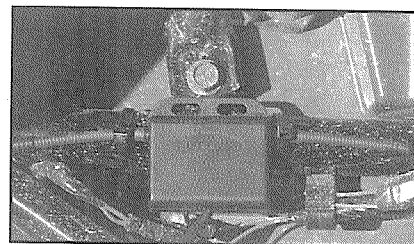


Figure 5

3. Find a location to mount antenna, i.e. to rack or frame (see Fig. 5).

3a. Run wire from antenna to receiver module.

4. Plug in antenna according to pin and color configuration.

**⚠ CAUTION** Do not force the plug into the socket. If it does not plug into the socket easily, rotate the plug, matching the tab in the socket to the keyway in the plug.

5. Using the blue and yellow leads, match the colors on the solenoid to the wires and run to the winch motor.

6. Using the red and black leads, match the colors on the solenoid to the wires and run to the battery.

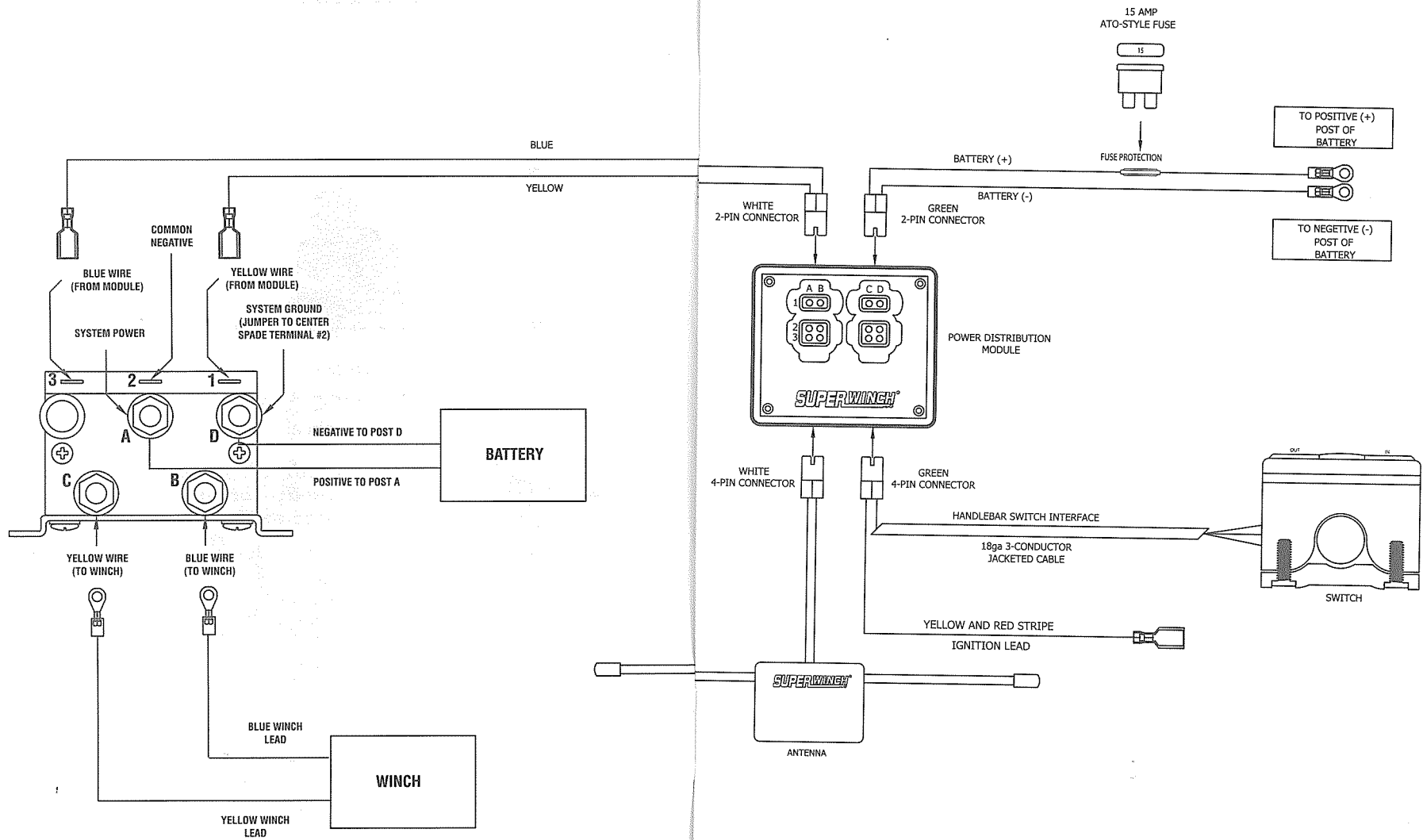
**Note:** Match all corresponding colors on the lead wires to corresponding colors on the solenoid. See wiring diagram

**Note:** When connecting the red 12 V positive to the battery, you must install the circuit breaker that came with your winch.

**⚠ CAUTION** When attaching wires to the motor or solenoid terminals, hold the inner nut with a wrench while tightening the outer nut with a second wrench. Do not allow the terminals to rotate in their housings. Rotation may cause internal wire breakage or part misalignment.

7. Reconnect vehicle positive and ground leads to the battery.

# 06202 Wire Diagram



## OPERATION TEST



### WARNING

*Before testing winch operation, be sure to reel off approximately two feet of wire rope*

1. Turn ignition "On."
2. Put winch in "Free Spool" (if applicable). Pull out two (2) feet of rope.
3. Locate wire rope out button.
4. Test cable-out button.
5. Test cable-in button.
6. Turn ignition off, make sure switch does not function in the Off position.

## Replacement Parts List

Reference Number	Description
90-20335	Solenoid
98-17293	Handle Bar Switch
98-17294	Power Distribution Module
98-17300	Solenoid Bracket
98-17296	Wire Kit
98-17301	Battery
98-17292	Antenna
98-17295	Key Chain Remote-(1)

## **FCC Statement**

This device complies with part 15 of the FCC rules. Operation is subject to the following two conditions. (1) This device may not cause harmful interference and (2) This device must accept any interference received, including interference that cause undesired operation.

You are cautioned that changes or modifications not expressly approved by the party responsible for compliance could void your authority to operate the equipment.

Note: The manufacturer is not responsible for any radio or TV interference caused by unauthorized modifications to this equipment. Such modifications could void the user's authority to operate the equipment.