

FEPL Test Setup Photographs

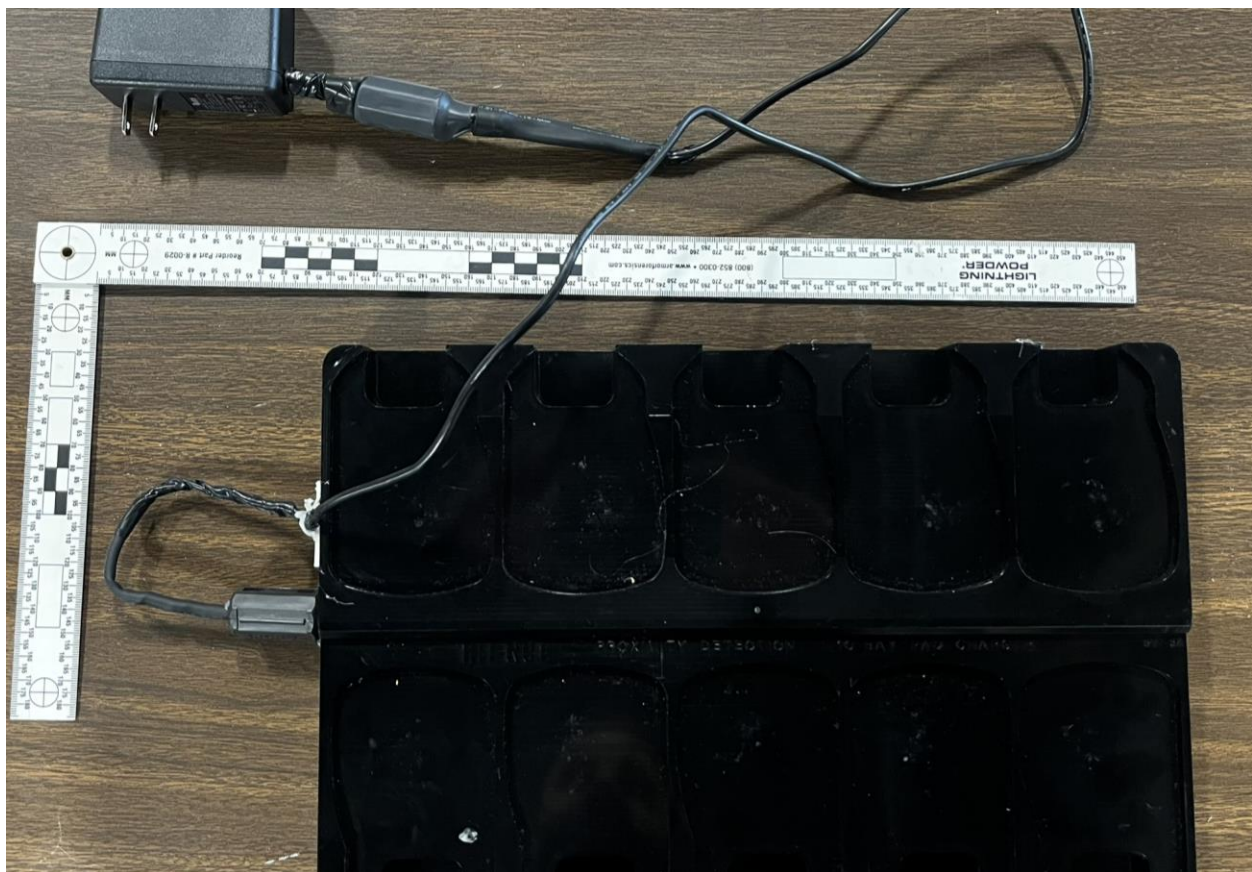
WL# 19115

EUT ID: 10-bay wireless charger.

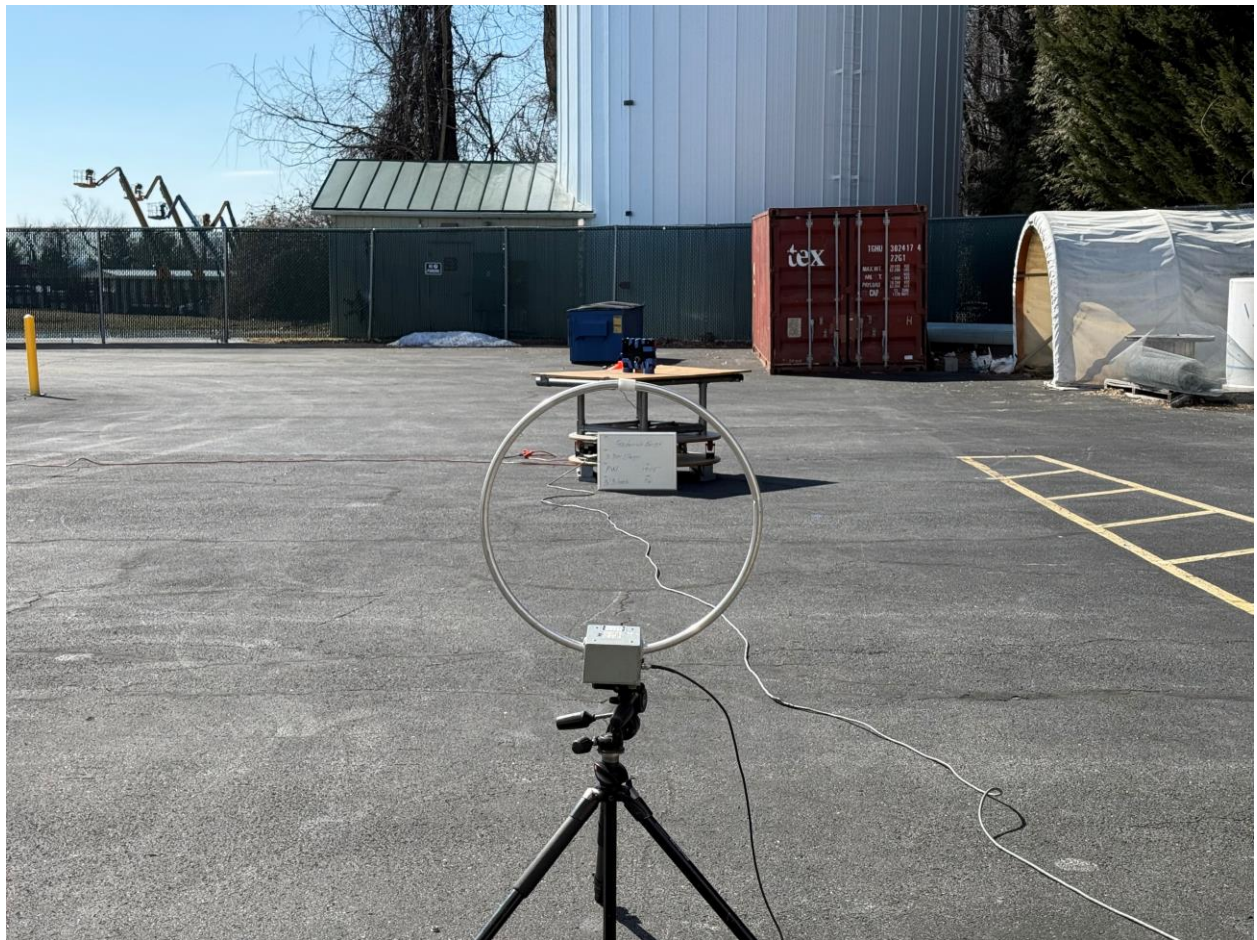
FCC ID: QUI-DDAC-10P-WCHG

IC ID: 11625A-DDAC10PWCHG

EUT Image, As Tested



Radiated Testing, < 30MHz, 10-meters, View 1



Radiated Testing, < 30MHz, 10-meters, View 2



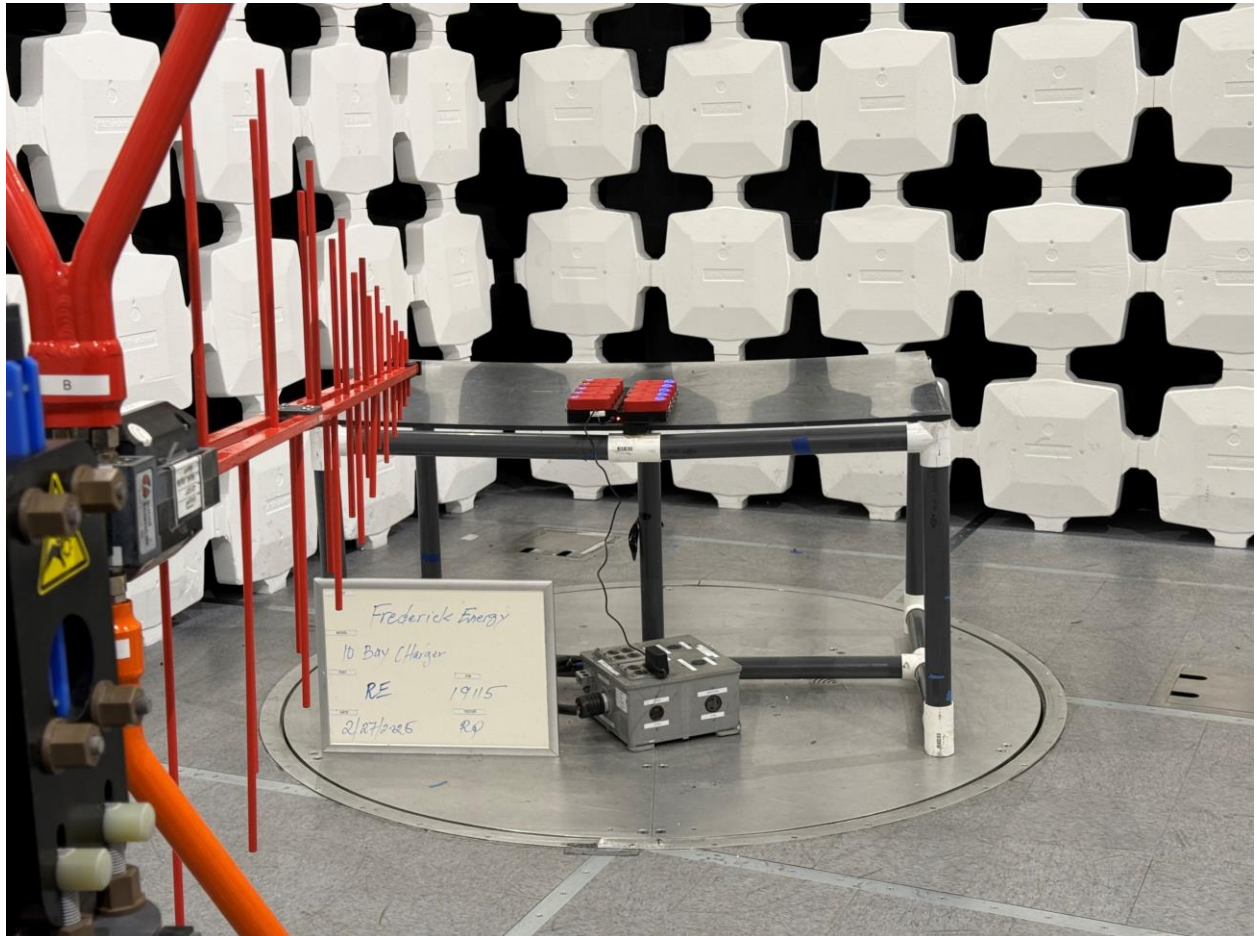
Radiated Testing, < 30MHz, 3-meters, View 1



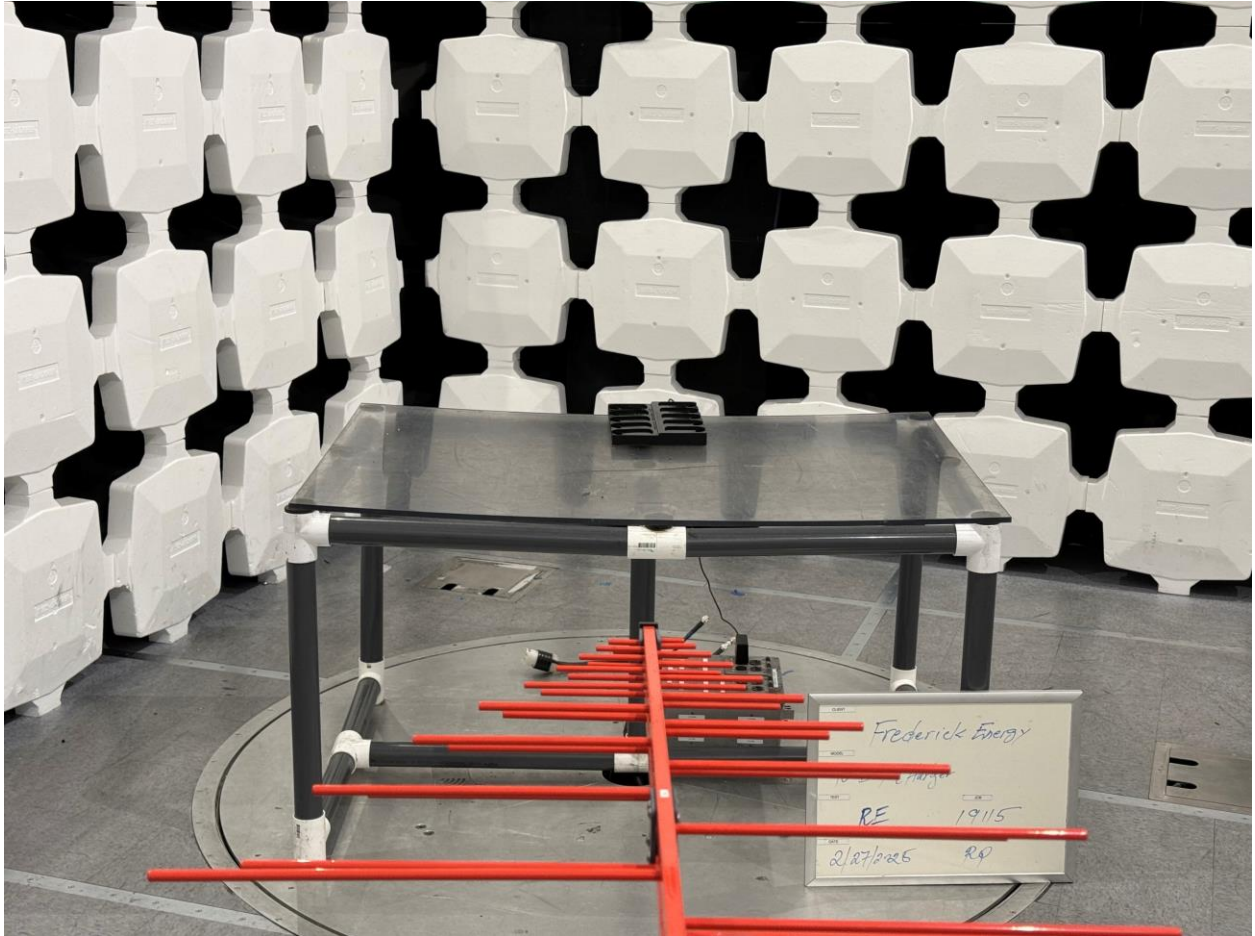
Radiated Testing, < 30MHz, 3-meters, View 2



Radiated Testing, > 30MHz, 3-meters, View 1



Radiated Testing, > 30MHz, 3-meters, View 2



AC Powerline Conducted, View 1



AC Powerline Condcuted, View 2

