



ONETECH

Testing & Evaluation Lab.

FCC ID. : QTM1501

File No. : E031R-008





ONETECH

Testing & Evaluation Lab.

FCC ID. : QTM1501

File No. : E031R-008



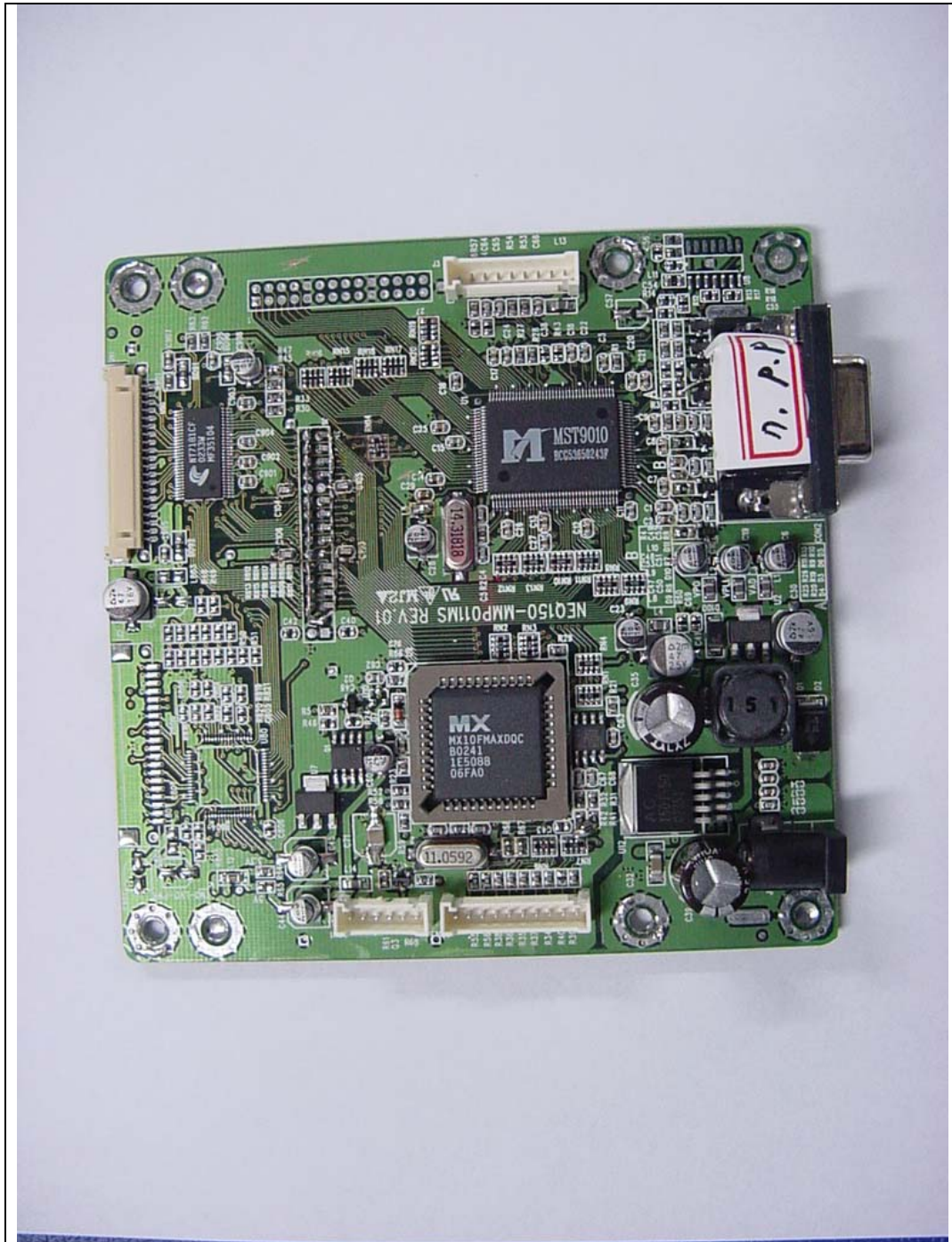


ONETECH

Testing & Evaluation Lab.

FCC ID. : QTM1501

File No. : E031R-008



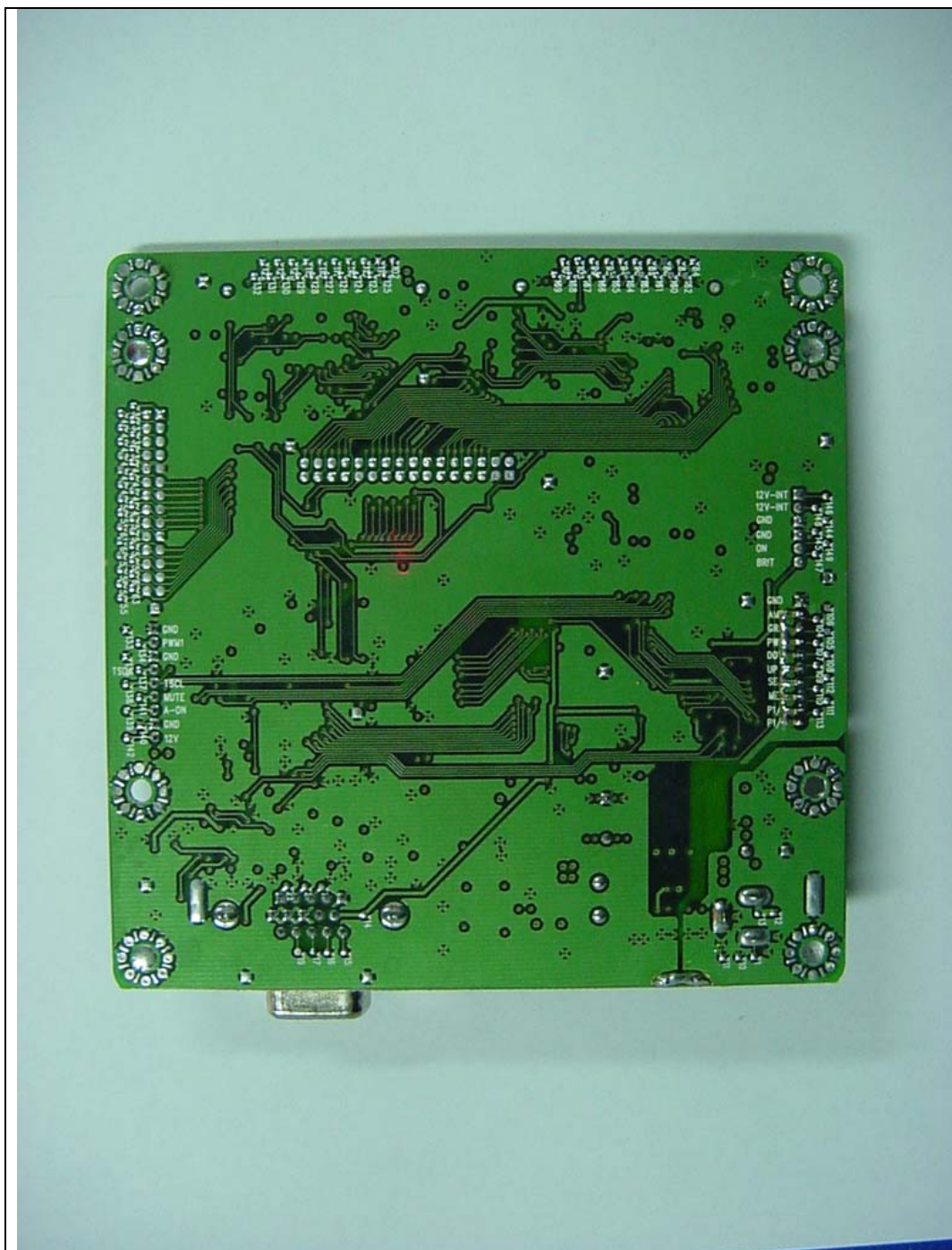


ONETECH

Testing & Evaluation Lab.

FCC ID. : QTM1501

File No. : E031R-008



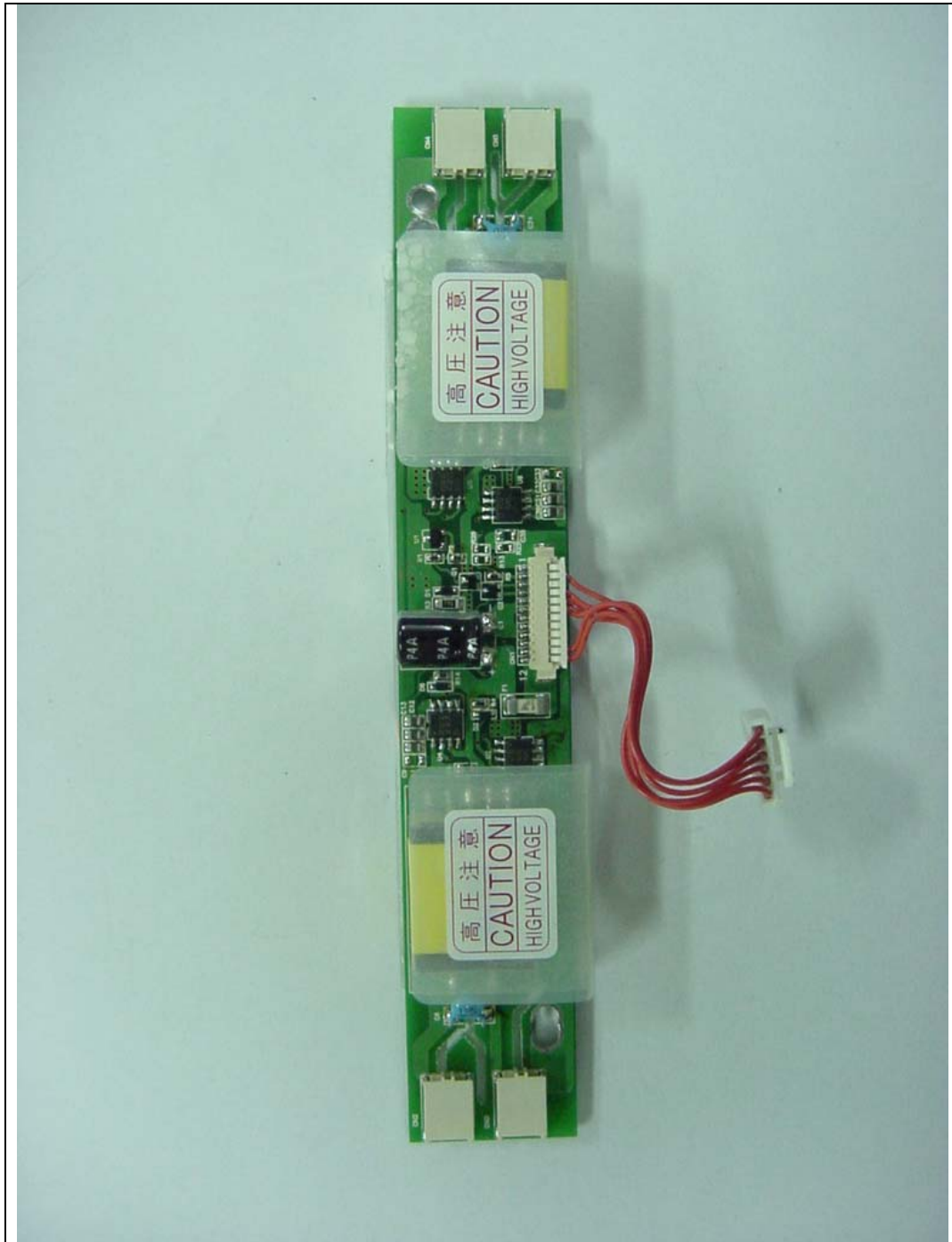


ONETECH

Testing & Evaluation Lab.

FCC ID. : QTM1501

File No. : E031R-008



[Top View of the Inverter Board manufactured by FRONTEK CO., LTD.]

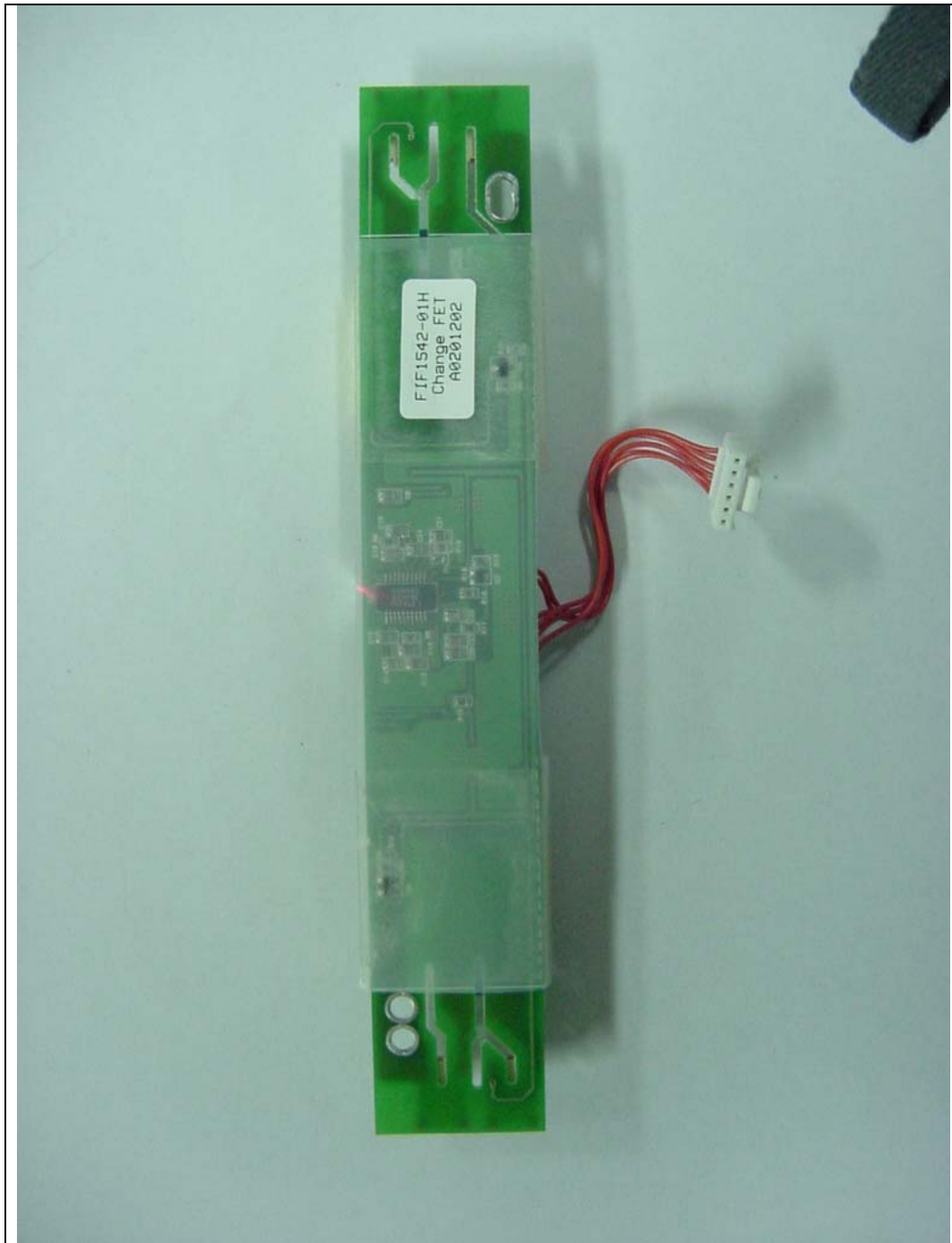


ONETECH

Testing & Evaluation Lab.

FCC ID. : QTM1501

File No. : E031R-008



[Bottom View of the Inverter Board manufactured by FRONTEK CO., LTD.]

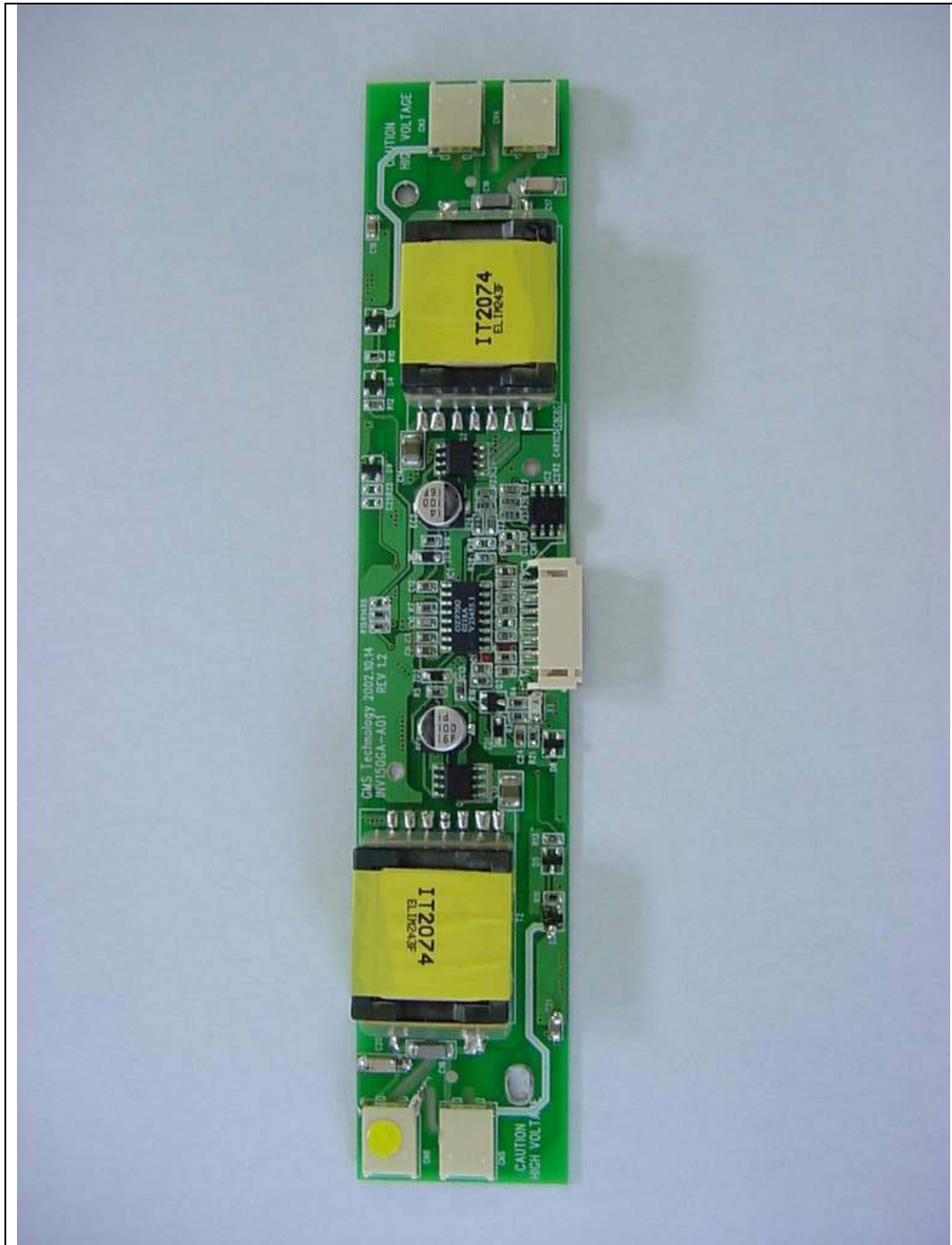


ONETECH

Testing & Evaluation Lab.

FCC ID. : QTM1501

File No. : E031R-008



[Top View of the Inverter Board manufactured by GMS Technology]

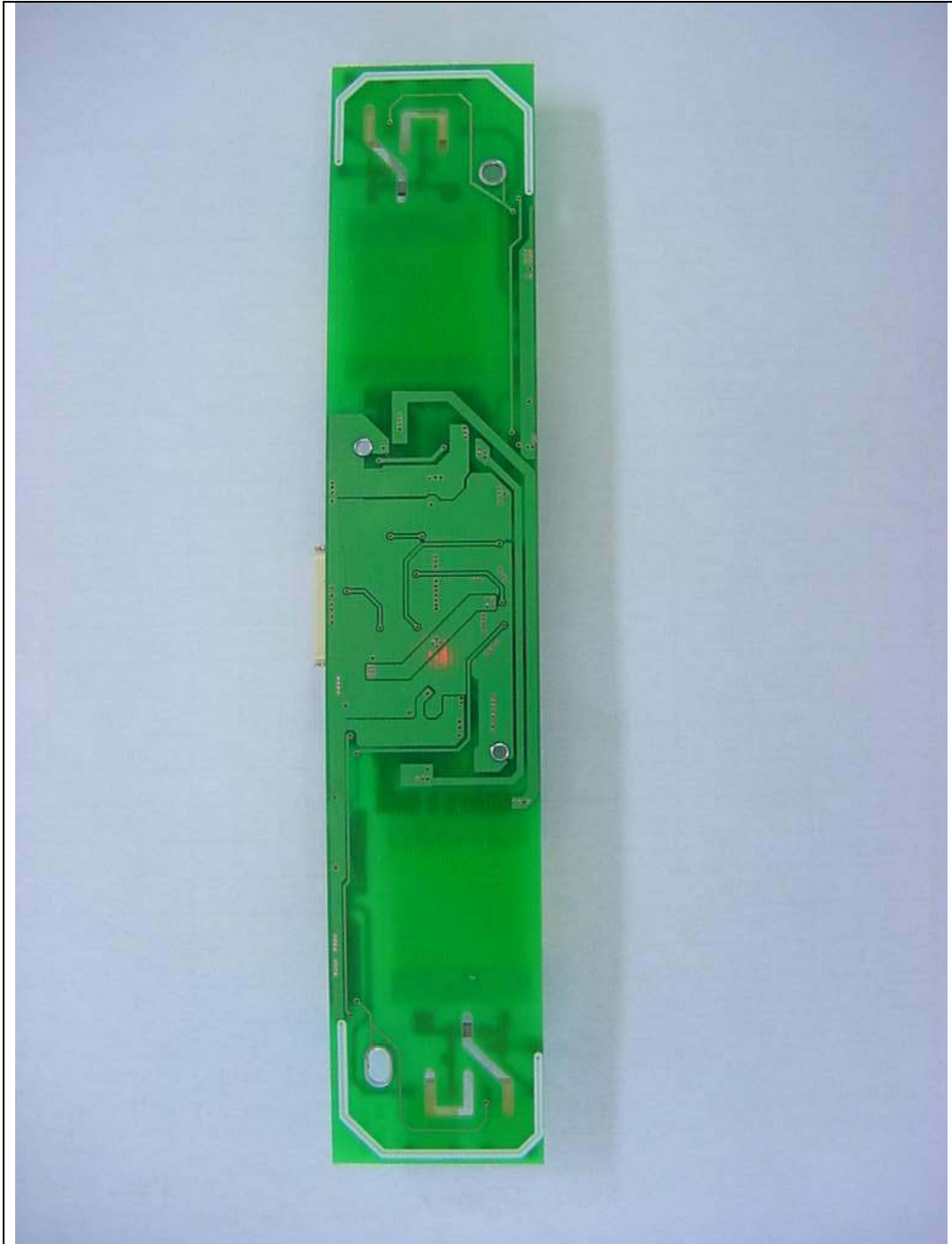


ONETECH

Testing & Evaluation Lab.

FCC ID. : QTM1501

File No. : E031R-008



[Bottom View of the Inverter Board manufactured by GMS Technology]

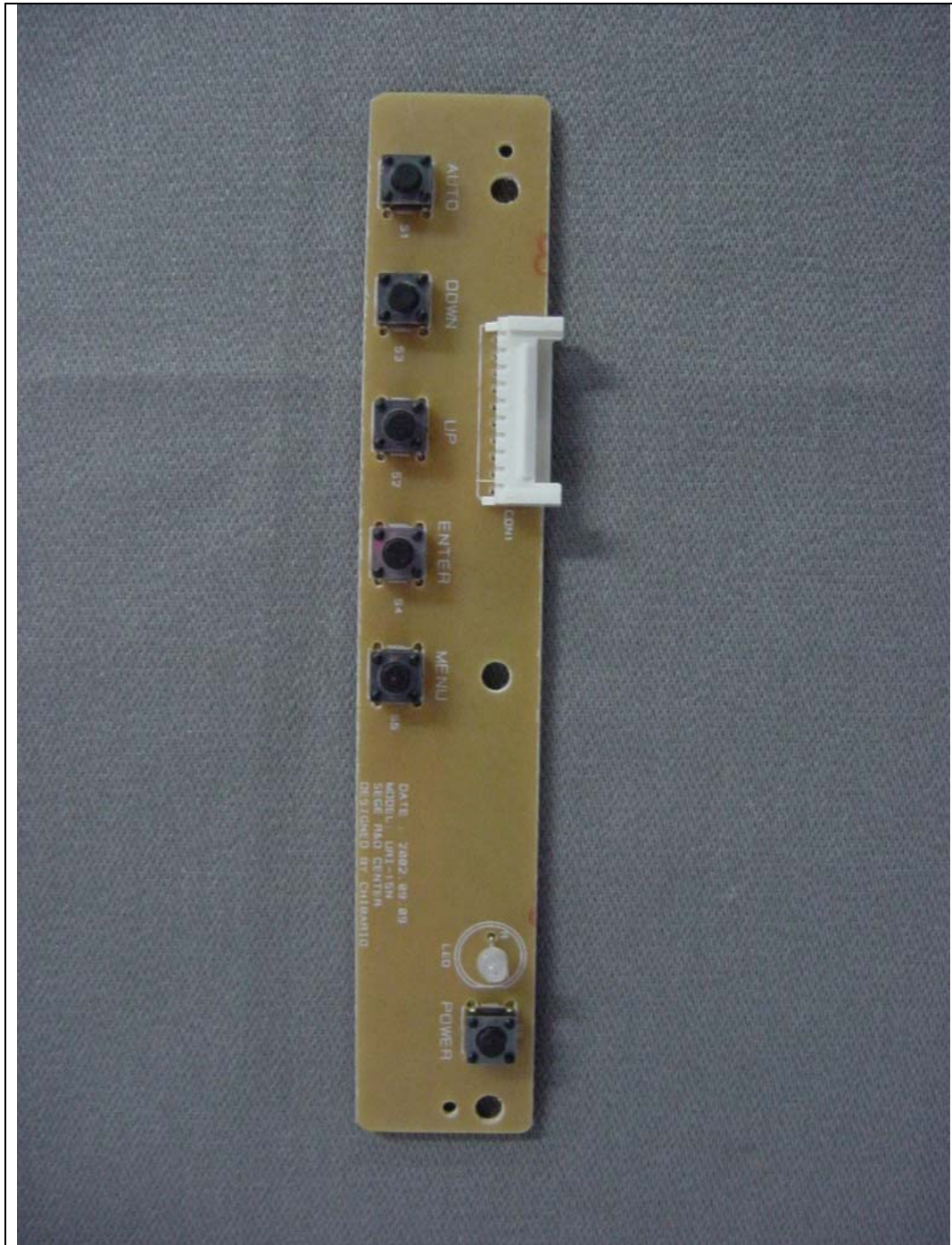


ONETECH

Testing & Evaluation Lab.

FCC ID. : QTM1501

File No. : E031R-008



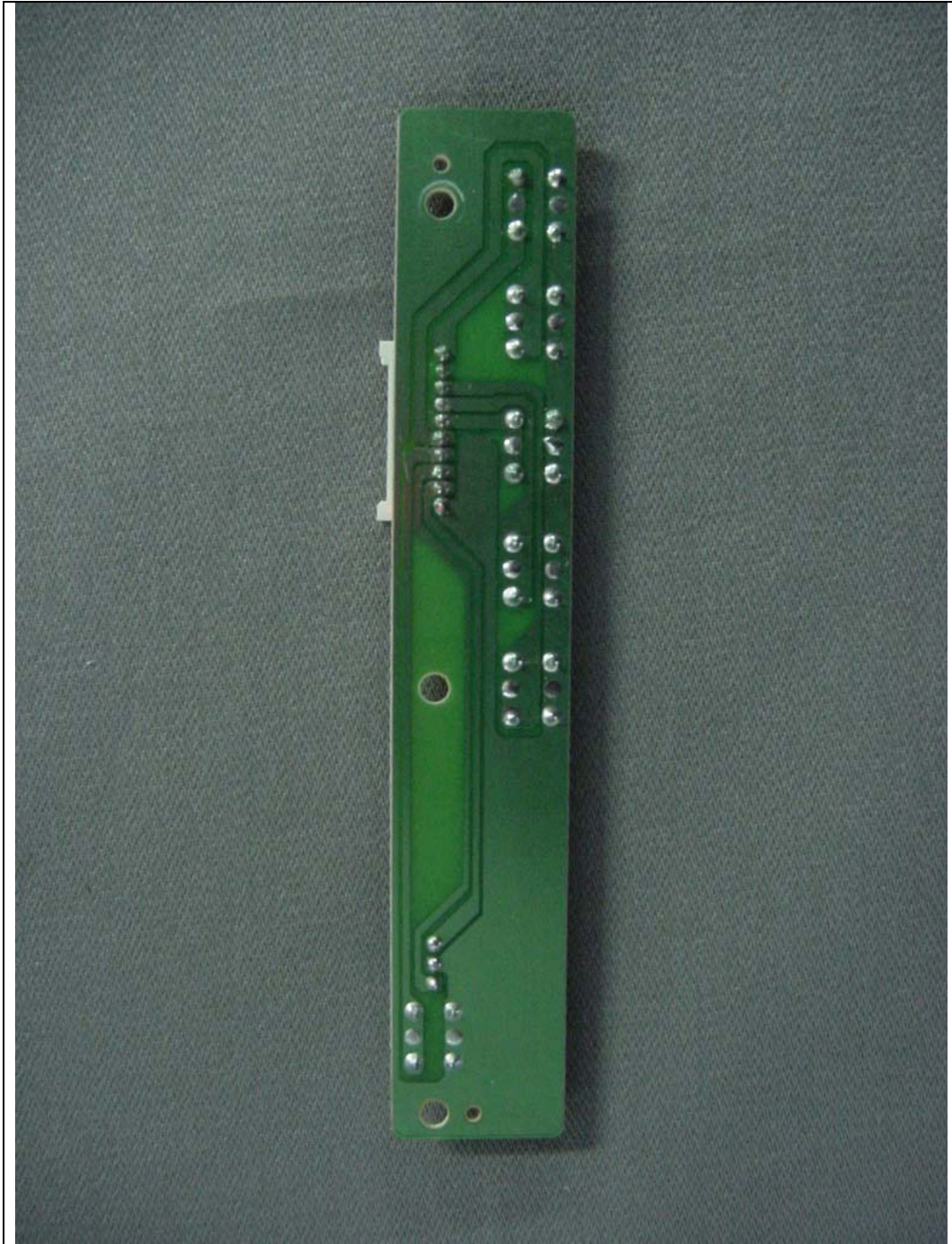


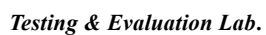
ONETECH

Testing & Evaluation Lab.

FCC ID. : QTM1501

File No. : E031R-008





File No. : E031R-008



