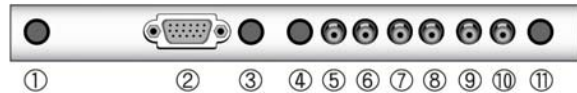


# Operational Description

## 1-2 How to install



- |                                     |                   |               |
|-------------------------------------|-------------------|---------------|
| 1. DC in                            | 5. CVBS 1- input  | 9. AUDIO-L    |
| 2. Signal cable from signal source. | 6. CVBS 1- output | 10. AUDIO-R   |
| 3. S-VIDEO input                    | 7. CVBS 2- input  | 11. Stereo in |
| 4. S-VIDEO output                   | 8. CVBS 2- output |               |

\* **SOURCE(HOT KEY)** : Monitor displays source of the signal in the order below:  
(PC ➡ VIDEO 1 ➡ VIDEO 2 ➡ S-VIDEO )

\* **WARNING** : Tilting more than 10 degrees to the front or 30 degrees to the back may cause collapse of the product.

## 2. FEATURES

### 2-1 Display Mode

RESOLUTION	H-Frequency(kHz)	V-Frequency(Hz)
640×350	31.47	70.0
720×400	31.47	70.0
640×480	31.47	60.0
	35.00	66.7
	37.86	72.8
	37.50	75.0
	35.16	56.0
800×600	37.88	60.3
	48.08	72.2
	46.87	75.0
832×624	49.73	75.0
1024×768	48.36	60.0
	56.48	70.1
	60.02	75.0
1280X1024	64.00	60.0
	80.00	75.0

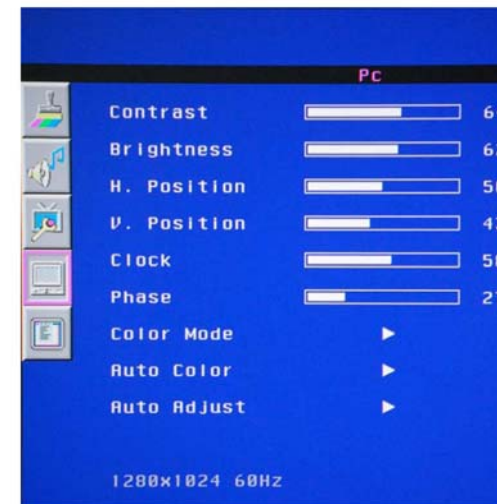
## Operational Description

### 2-2 Specifications(17INCH)

Spec	Details	
Screen size	17"	
Display size	337.92mm×270.34mm	
Screen coating	Anti-glare & Hard-coating	
Pixel pitch	0.264×0.264mm	
Brightness	300cd/m <sup>2</sup>	
Contrast scaling	1,000:1	
Viewing angle	70/70/75/65 (left/right/up/down)	
Response time	5ms	
input Signal	Analog RGB, S-VIDEO in/out, CVBS1- in/out, CVBS2- in/out, AUDIO L/R, Stereo in	
Speaker(Optional)	2W x 2W	
H-Frequency	30~81kHz	
V-Frequency	55~75Hz	
Resolution	1280×1024 @ 75Hz	
Power	35W (Normal mode)	
Consumption	2W (Power-saving mode)	
Product size	438×149×450 (W×D×H)	
Weight	Monitor	4.6kg
	Package	6.5kg

## 3. OSD(On Screen Display) Setting

### 3-1 OSD MENU in PC

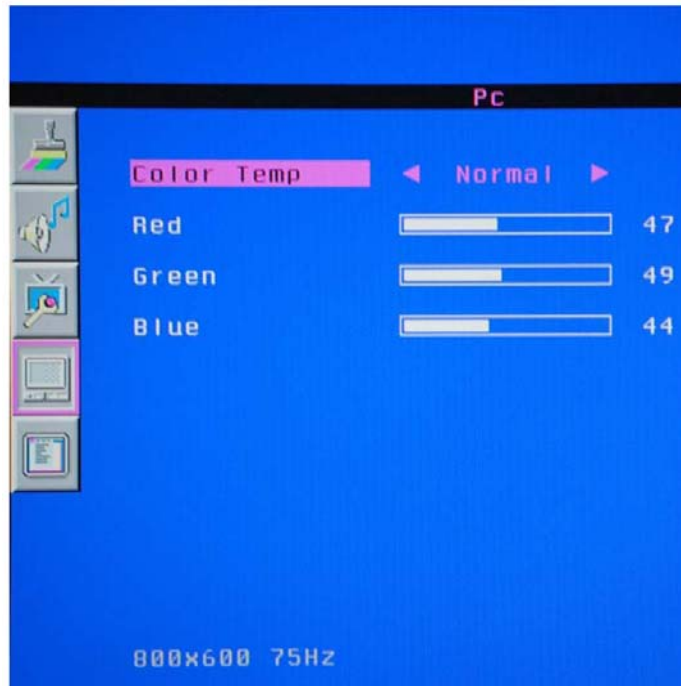


#### Menu PC

- Contrast : to adjust the brightness and darkness of the object and backgrounds.
- Brightness : to adjust the brightness of the entire picture.
- H-positions : to adjust the horizontal position of picture.
- V-position : to adjust the vertical position of picture.
- Clock : to adjust the horizontal size of the entire screen image.
- Phase : to eliminate the shake of the picture.
- Color mode : to select color tone of the entire picture.
- Auto color : to adjust color (brightness / contrast, etc) automatically.
- Auto adjust : horizontal/vertical positions and phase, clock are automatically adjusted.

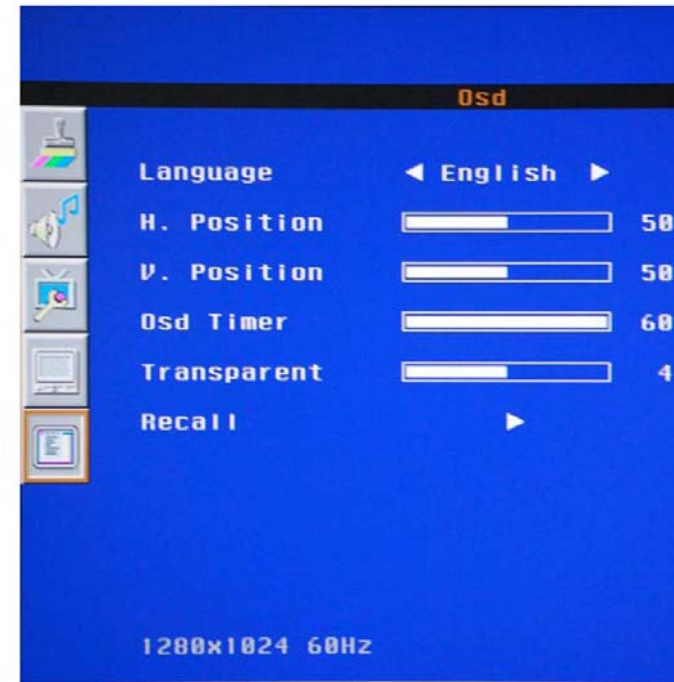
## Operational Description

### 3-2 Color Mode



- Normal : for a general color tone.
- Warm : for warm colors with redish tone.
- Cool : for cool colors with bluish tone.
- User : adjust the color tone with R G B control.

### 3-3 OSD MENU in PC



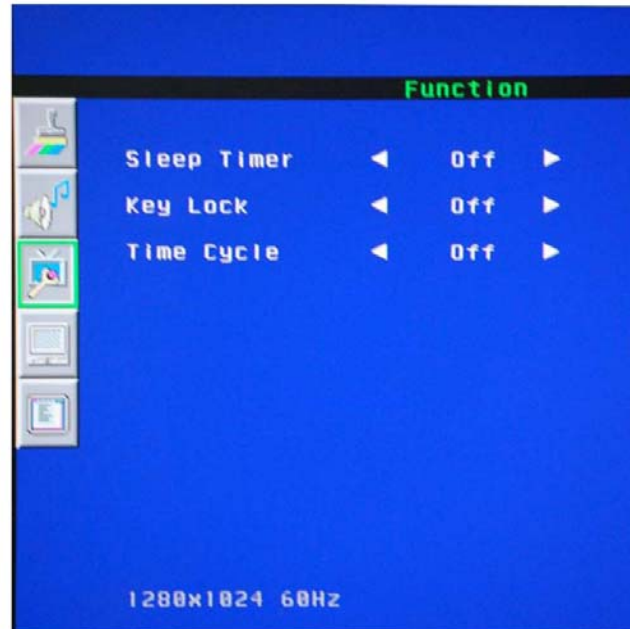
#### Menu OSD

- Language : to select the preferred language.
- H-position : to adjust the horizontal position of OSD window.
- V-position : to adjust the vertical position of OSD window.
- OSD timer : to adjust the time of OSD window display.
- Transparent : to adjust the transparency of OSD window.
- Recall : to recall the initial setting.

## Operational Description

---

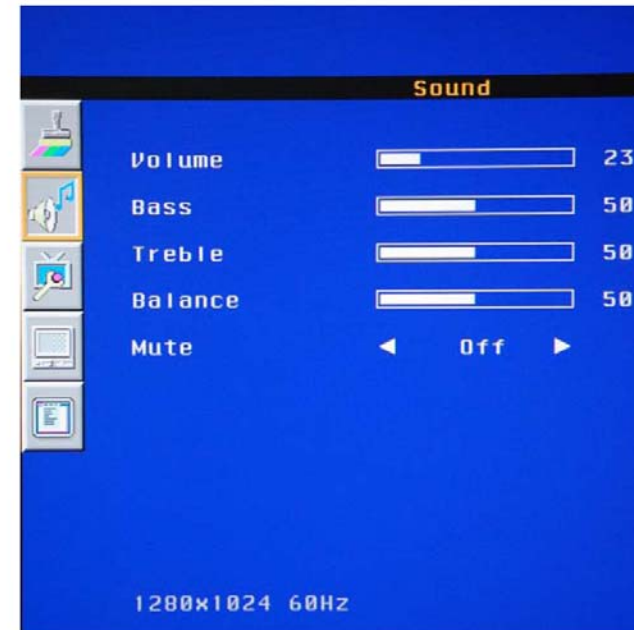
### 3-4 OSD MENU in PC



#### Menu Function

- Sleep timer : select the sleep time if you want automatically power off on a certain time.
- Key lock : to lock the key function.  
Exit from key lock : Please AC power off and on with pushing the menu key.
- Time Cycle : to alternate Video1 and Video2 at the set time.

### 3-5 Sound



#### Menu Sound

- Volume : adjust audio volume
- Bass : adjust audio bass
- Treble : adjust audio treble
- Balance : adjust audio balance(left-right)
- Mute : Selects the sound on and off

## Operational Description

### 3-6 OSD MENU in Video or S-video



#### Menu Picture

- Contrast : to adjust the brightness and darkness of the object and backgrounds.
- Brightness : to adjust the brightness of the entire picture.
- Hue : to adjust colors naturally. This function is activated at NTSC video signal.
- Saturation : to adjust colors to deeper or lighter color.
- Sharpness : to adjust the sharpness of video image.
- Color temp :
  - Normal : for a general color tone.
  - Warm : for warm colors with reddish tone.
  - Cool : for cool colors with bluish tone.
- Scaling : -4:3 : for general picture size.
  - Zoom : zoom in vertical direction.
- Picture mode : -Standard : for general contents. It fits most contents.
  - Vivid : for a clear display.
  - Movie : for movies.
  - User : when the user wants to set the values.

### 3-7 OSD MENU in Video or S-video



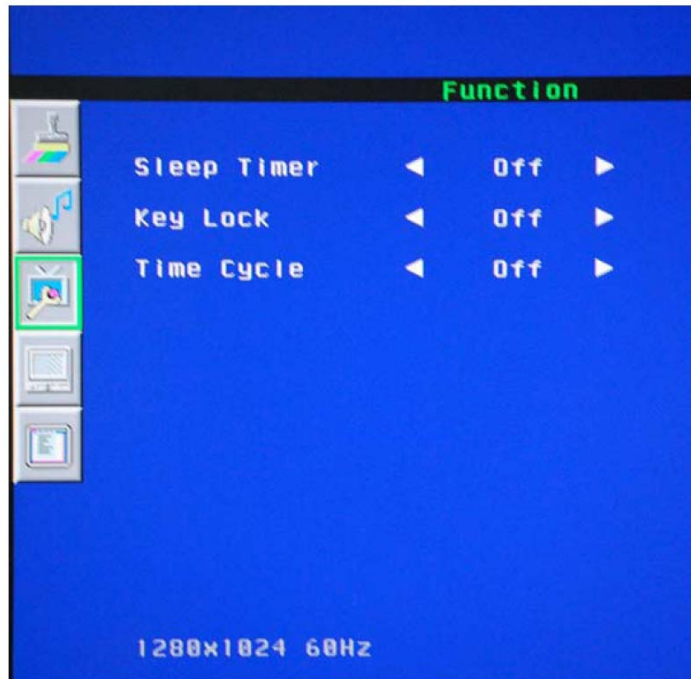
#### Menu OSD

- The control is same as PC.

## Operational Description

---

### 3-8 OSD MENU in Video or S-video



#### Menu Function

-The control is same as PC.