

USER'S GUIDE

TFT-LCD MONITOR (SECURITY)

**Model: OR1730SH
OR1930SH**

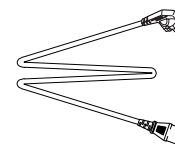
LCD MONITOR
User's Guide Book

TABLE OF CONTENTS

1. INSTALLATION	3
1-1 Parts	3
1-2 How to install	4
2. FEATURES	5
2-1 Display Mode	5
2-2 Specifications(17INCH)	5
2-3 Specifications(19INCH)	6
3.OSD SETTING	7-14
4. CONTROL BUTTON	15
5. SARETY INSTRUCTION	16-19
6. INFORMATION TO THE USER	20
7. TROUBLE SHOOTING	21

1. INSTALLATION

1-1 Parts



AC Power Cord



VGA Signal Cable



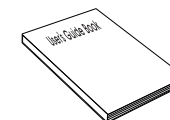
TFT LCD Monitor



Installation Driver

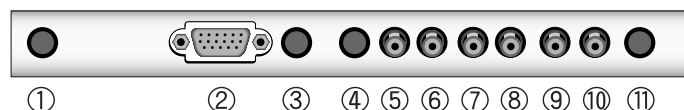


AUDIO CABLE(OPTION)



User' s Guide Book

1-2 How to install



- | | | |
|-------------------------------------|-------------------|---------------|
| 1. DC in | 5. CVBS 1- input | 9. AUDIO-L |
| 2. Signal cable from signal source. | 6. CVBS 1- output | 10. AUDIO-R |
| 3. S-VIDEO input | 7. CVBS 2- input | 11. Stereo in |
| 4. S-VIDEO output | 8. CVBS 2- output | |

*** SOURCE(HOT KEY) :** Monitor displays source of the signal in the order below:
(PC ➡ VIDEO 1 ➡ VIDEO 2 ➡ S-VIDEO)

*** WARNING :** Tilting more than 10 degrees to the front or 30 degrees to the back may cause collapse of the product.

2. FEATURES

2-1 Display Mode

RESOLUTION	H-Frequency(kHz)	V-Frequency(Hz)
640×350	31.47	70.0
720×400	31.47	70.0
640×480	31.47	60.0
	35.00	66.7
	37.86	72.8
	37.50	75.0
800×600	35.16	56.0
	37.88	60.3
	48.08	72.2
	46.87	75.0
832×624	49.73	75.0
1024×768	48.36	60.0
	56.48	70.1
	60.02	75.0
1280×1024	64.00	60.0
	80.00	75.0

2-2 Specifications(17INCH)

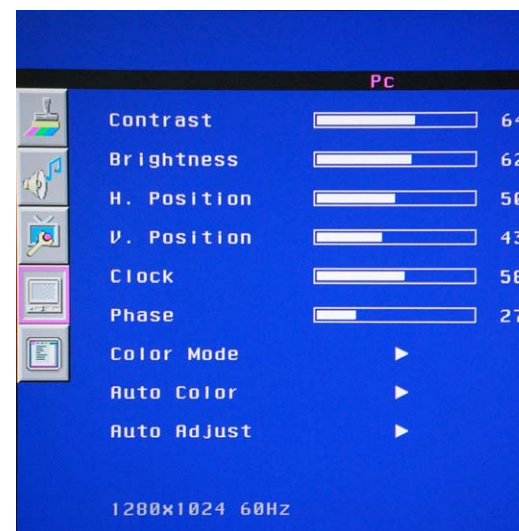
Spec		Details
Screen size		17"
Display size		337.92mm×270.34mm
Screen coating		Anti-glare & Hard-coating
Pixel pitch		0.264×0.264mm
Brightness		300cd/m ²
Contrast scaling		1,000:1
Viewing angle		70/70/75/65 (left/right/up/down)
Response time		5ms
input Signal		Analog RGB, S-VIDEO in/out, CVBS1- in/out, CVBS2- in/out, AUDIO L/R, Stereo in
Speaker(Optional)		2W x 2W
H-Frequency		30~81kHz
V-Frequency		55~75Hz
Resolution		1280×1024 @ 75Hz
Power		35W (Normal mode)
Consumption		2W (Power-saving mode)
Product size		438×149×450 (W×D×H)
Weight	Monitor	4.6kg
	Package	6.5kg

2-3 Specifications(19INCH)

Spec		Details
Screen size		19"
Display size		376mm×301mm
Screen coating		Anti-glare & Hard-coating
Pixel pitch		0.294×0.294mm
Brightness		300cd/㎡
Contrast scaling		1,000:1
Viewing angle		70/70/75/65 (left/right/up/down)
Response time		Tf=2msec, Tr=6msec
input Signal		Analog RGB, S-VIDEO in/out, CVBS1- in/out, CVBS2- in/out, AUDIO L/R, Stereo in
Speaker(Optional)		2W x 2W
H-Frequency		30~81kHz
V-Frequency		50~75Hz
Resolution		1280×1024 @ 75Hz
Power		45W (Normal mode)
Consumption		2W (Power-saving mode)
Product size		495×155×508 (W×D×H)
Weight	Monitor	5.4kg
	Package	7.4kg

3. OSD(On Screen Display) Setting

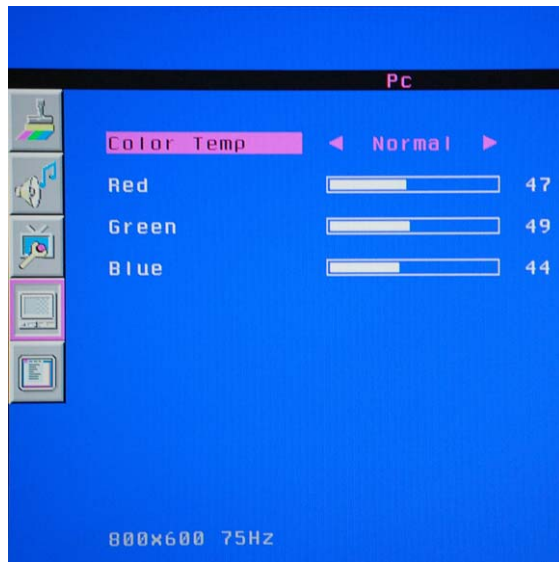
3-1 OSD MENU in PC



Menu PC

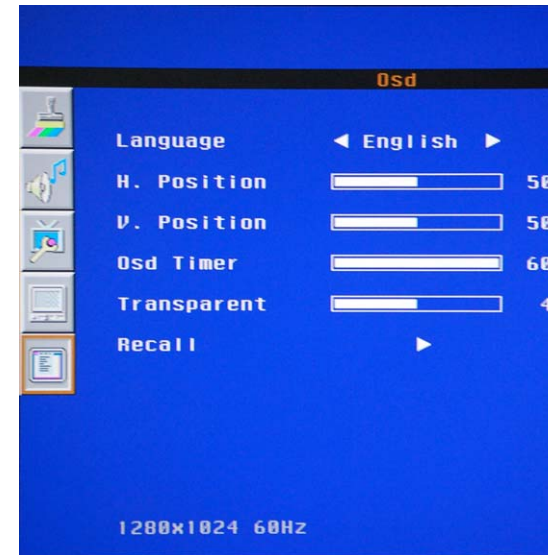
- Contrast : to adjust the brightness and darkness of the object and backgrounds.
- Brightness : to adjust the brightness of the entire picture.
- H-positions : to adjust the horizontal position of picture.
- V-position : to adjust the vertical position of picture.
- Clock : to adjust the horizontal size of the entire screen image.
- Phase : to eliminate the shake of the picture.
- Color mode : to select color tone of the entire picture.
- Auto color : to adjust color (brightness / contrast, etc) automatically.
- Auto adjust : horizontal/vertical positions and phase, clock are automatically adjusted.

3-2 Color Mode



- Normal : for a general color tone.
- Warm : for warm colors with redish tone.
- Cool : for cool colors with bluish tone.
- User : adjust the color tone with R G B control.

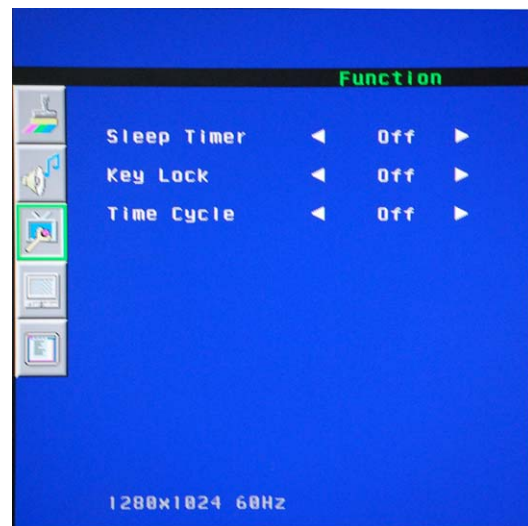
3-3 OSD MENU in PC



Menu OSD

- Language : to select the preferred language.
- H-position : to adjust the horizontal position of OSD window.
- V-position : to adjust the vertical position of OSD window.
- OSD timer : to adjust the time of OSD window display.
- Transparent : to adjust the transparency of OSD window.
- Recall : to recall the initial setting.

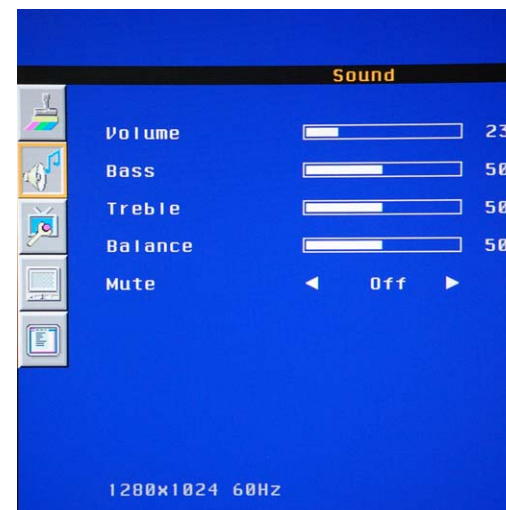
3-4 OSD MENU in PC



Menu Function

- Sleep timer : select the sleep time if you want automatically power off on a certain time.
- Key lock : to lock the key function.
Exit from key lock : Please AC power off and on with pushing the menu key.
- Time Cycle : to alternate Video1 and Video2 at the set time.

3-5 Sound



Menu Sound

- Volume : adjust audio volume
- Bass : adjust audio bass
- Treble : adjust audio treble
- Balance : adjust audio balance(left-right)
- Mute : Selects the sound on and off

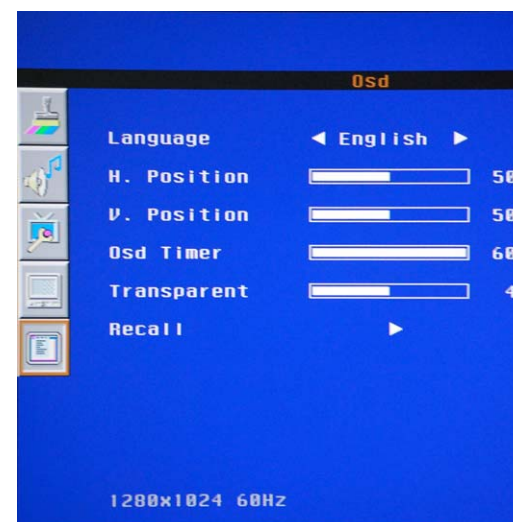
3-6 OSD MENU in Video or S-video



Menu Picture

- Contrast : to adjust the brightness and darkness of the object and backgrounds.
- Brightness : to adjust the brightness of the entire picture.
- Hue : to adjust colors naturally. This function is activated at NTSC video signal.
- Saturation : to adjust colors to deeper or lighter color.
- Sharpness : to adjust the sharpness of video image.
- Color temp :
 - Normal : for a general color tone.
 - Warm : for warm colors with reddish tone.
 - Cool : for cool colors with bluish tone.
- Scaling :
 - 4:3 : for general picture size.
 - Zoom : zoom in vertical direction.
- Picture mode :
 - Standard : for general contents. It fits most contents.
 - Vivid : for a clear display.
 - Movie : for movies.
 - User : when the user wants to set the values.

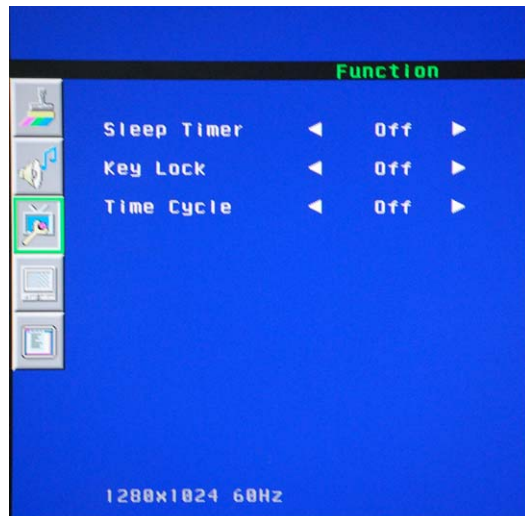
3-7 OSD MENU in Video or S-video



Menu OSD

- The control is same as PC.

3-8 OSD MENU in Video or S-video



Menu Function

-The control is same as PC.

4. CONTROL BUTTON

Menu/Select	Auto/Source/Exit	▼ / ▲	⏻
-------------	------------------	-------	---

Menu/Select : Activate the Main menu.
View the next function in the Main menu.
Select the sub menu.

Auto/Source/Exit : Select Mode (Hot Key)
At the PC mode, Push the key over about 1set.
View the previous function in the Main menu.
Exit from Main menu.
Auto adjust (Hot Key, PC mode).
Select Video 1 or 2mode during "Time cycle"
action (Hot Key).

▼ : Adjust Contrast / Brightness (Hot Key).
OSD Item Down.
Decrease the value of the specific function
which has been selected.

▲ : Volume control (Hot Key) : Push the key over
about 1set.
Increase the value of the specific function which
has been selected.
Freezer function (Hot Key).

⏻ : Turn on/off monitor.

5. SAFETY INSTRUCTION

※ Follow this safety instruction to use the monitor properly and prevent the damages.

※ This safety instruction has "Warning" and "Caution" as below.



Warning - If the user does not follow this instruction, it may cause the serious damage to the user or the monitor.



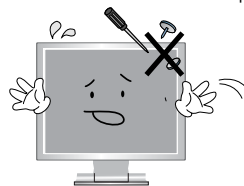
Caution - If the user does not follow this instruction, it may cause the slight damage to the user or cause some damages to the monitor.

※ Save this user's guide book for later use



Warning

Never remove the back cover and touch the inside of the monitor. If you need a service, please contact the service center or sales rep.



Keep away the monitor from the direct sunlight and a heating appliance



Never push objects of any kind into this product as they may result in a risk of fire or electric shock

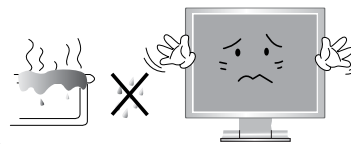


Connect the power cord to the wall outlet tightly. If the power cord or plug are defective and the wall outlet is not tight, please do not use them

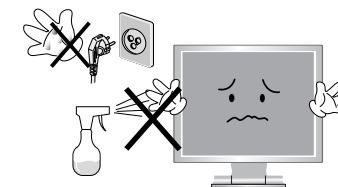


Warning

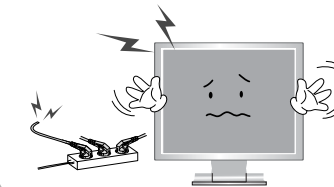
Do not install this monitor on the outside and near water. If may cause damage to the product, electric shock and fire.



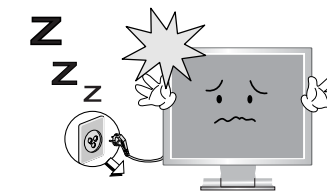
For cleaning, do not use liquid cleaners. Never touch the power plug with wet-hands



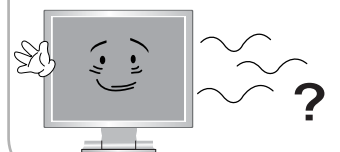
When lightning and thundering, unplug the monitor from the wall outlet and never touch it.



Unplug this product from the wall outlet, when it does not operate for a long time.



When smoking and noising from the monitor, unplug the product from the wall outlet and contact a service center or the sales rep.



WARNING : How to fix

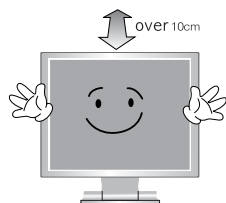
Do not open this product as it contains high voltage inside.

It may create an electric shock.

If the user disassembles and Removes the back cover, it does not make sure to make up for the damages and do a service and exchange the monitor.

! Cautions

Install this monitor some distance from the wall and do not install unless Proper ventilation is provided.



Place this product on a stable place. If not, it may fall, causing serious damages to the monitor and people.



The openings must not be blocked by curtain, rug or other similar surface.



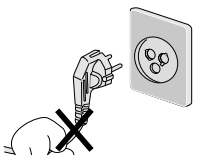
When carrying this monitor, be careful not to damage the panel and drop it. It may cause some trouble.



Before carrying the monitor, turn it off and unplug the signal cables and the power cord from the wall outlet.

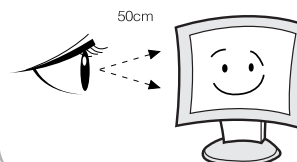


Take the power plug out from the wall outlet. Do not pull the cable. It may snap the inner-wires and cause overheating and fire.



! Cautions

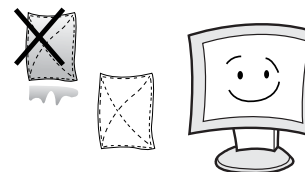
Install this monitor about 50cm far from the eyes and an angle of 0~15 degrees below eyes. Too close installation may cause having weak sight.



Do not press the LCD panel with hands or the sharpened material hardly.



For cleaning, unplug the monitor from the wall outlet. Do not use the liquid cloth. Use the soft cloth.



Do not use the chemical liquid for cleaning. It may cause fading and breakage.



6. INFORMATION TO THE USER

INFORMATION TO THE USER

This equipment has been tested and found to comply with the limits for a Class B digital device, pursuant to part 15 of the FCC Rules. These limits are designed to provide reasonable protection against harmful interference in a residential installation.

This equipment generates, uses and can radiate radio frequency energy and, if not installed and used in accordance with the instructions, may cause harmful interference to radio communications. However, there is no guarantee that interference will not occur in a particular installation. If this equipment does cause harmful interference to radio or television reception, which can be determined by turning the equipment off and on, the user is encouraged to try to correct the interference by one more of the following measures:

- Reorient or relocate the receiving antenna.
- Increase the separation between the equipment and receiver.
- Connect the equipment into an outlet on a circuit different from that to which the receiver is connected.
- Consult the dealer or an experienced radio / TV technician for help.

WARNING

The manufacturer is not responsible for any Radio or TV interference caused by unauthorized modifications to this equipment. Such modifications could void the user's authority to operate the equipment."

7. TROUBLE SHOOTING

※ When the following troubles are occurred, follow the trouble shooting before contacting a service center or sales rep.

Trouble	Check point	How to fix
Power indicator is off and no picture	<ul style="list-style-type: none"> - The power cord is properly connected? - Check the power button of monitor 	<ul style="list-style-type: none"> - Connect the power cord properly. - Turn on the monitor
No picture even though the power LED is on.	<ul style="list-style-type: none"> - Check the signal cable is connected properly. 	<ul style="list-style-type: none"> - Connect the signal cable properly
Screen position is not collect.	<ul style="list-style-type: none"> - Check the screen size and position 	<ul style="list-style-type: none"> - Press "AUTO" button on OSD menu
Screen is too bright or dark	<ul style="list-style-type: none"> - Check the brightness of the monitor 	<ul style="list-style-type: none"> - Adjust the brightness by PC system
Screen is not clear. Focus is bad and noise occur.	<ul style="list-style-type: none"> - The frequency sets up properly? 	<ul style="list-style-type: none"> - Adjust the frequency by PC.