

Nokia E5-00 User Guide

555555
Issue 1

2 Contents

Contents	Contacts	20
	Calendar	23
	Multitasking	25
	Flashlight	25
Safety 4	Make calls 26	
About your device	Voice calls	26
Network services	Messaging 26	
About Digital Rights Management	E-mail	27
Battery removing	About Ovi Contacts	28
	Connect to the service	29
	Write and send messages	29
Get started 8	Connectivity 31	
Keys and parts	Wi-Fi/WLAN connection	31
Insert the SIM card and battery	Internet 32	
Insert the memory card	Browse the web	32
Remove the memory card	Maps 33	
Charge the battery	Maps overview	33
Lock or unlock the keyboard	View your location and the map	34
Switch the device on and off	Map view	35
Antenna locations	Change the look of the map	35
Copy content from your old device	Download and update maps	36
Nokia Ovi Suite	About positioning methods	36
Visit Ovi by Nokia	Find a location	37
About Ovi Store	Personalisation 38	
Access codes 16		
Basic use 17		
Home screen		
One-touch keys		
Write text		

www.nokia.com/support

Profiles	38
Find help	39
Support	39
Update device software	40
In-device help	40
Accessibility solutions	41
Prolong battery life	41
Green tips	43
Save energy	43
Recycle	43
Product and safety information	43
Index	51

4 Safety

Safety

Read these simple guidelines. Not following them may be dangerous or illegal. Read the complete user guide for further information.

SWITCH ON SAFELY



Do not switch the device on when wireless phone use is prohibited or when it may cause interference or danger.

ROAD SAFETY COMES FIRST



Obey all local laws. Always keep your hands free to operate the vehicle while driving. Your first consideration while driving should be road safety.

INTERFERENCE



All wireless devices may be susceptible to interference, which could affect performance.

SWITCH OFF IN RESTRICTED AREAS



Follow any restrictions. Switch the device off in aircraft, near medical equipment, fuel, chemicals, or blasting areas.

QUALIFIED SERVICE



Only qualified personnel may install or repair this product.

ACCESSORIES AND BATTERIES



Use only approved accessories and batteries. Do not connect incompatible products.

WATER-RESISTANCE



Your device is not water-resistant. Keep it dry.

About your device

The wireless device described in this guide is approved for use on the UMTS 850, 1900, and 2100 MHz networks, and GSM 850, 900, 1900, and 2100 MHz networks. Contact your service provider for more information about networks.

www.nokia.com/support

Your device supports several connectivity methods and like computers may be exposed to viruses and other harmful content. Exercise caution with messages, connectivity requests, browsing, and downloads. Only install and use services and software from trustworthy sources that offer adequate security and protection, such as applications that are Symbian Signed or have passed the Java Verified™ testing. Consider installing antivirus and other security software on your device and any connected computer.

Your device may have preinstalled bookmarks and links for third-party internet sites and may allow you to access third-party sites. These are not affiliated with Nokia, and Nokia does not endorse or assume liability for them. If you access such sites, take precautions for security or content.

Warning:

To use any features in this device, other than the alarm clock, the device must be switched on. Do not switch the device on when wireless device use may cause interference or danger.

When using this device, obey all laws and respect local customs, privacy and legitimate rights of others, including copyrights. Copyright protection may prevent some images, music, and other content from being copied, modified, or transferred.

Make back-up copies or keep a written record of all important information stored in your device.

When connecting to any other device, read its user guide for detailed safety instructions. Do not connect incompatible products.

The images in this guide may differ from your device display.

Refer to the user guide for other important information about your device.

Network services

To use the device you must have service from a wireless service provider. Some features are not available on all networks; other features may require that you make specific arrangements with your service provider to use them. Network services involve transmission

www.nokia.com/support

6 Safety

of data. Check with your service provider for details about fees in your home network and when roaming on other networks. Your service provider can explain what charges will apply. Some networks may have limitations that affect how you can use some features of this device requiring network support such as support for specific technologies like WAP 2.0 protocols (HTTP and SSL) that run on TCP/IP protocols and language-dependent characters.

Your service provider may have requested that certain features be disabled or not activated in your device. If so, these features will not appear on your device menu. Your device may also have customized items such as menu names, menu order, and icons.

About Digital Rights Management

When using this device, obey all laws and respect local customs, privacy and legitimate rights of others, including copyrights. Copyright protection may prevent you from copying, modifying, or transferring images, music, and other content.

Content owners may use different types of digital rights management (DRM)

technologies to protect their intellectual property, including copyrights. This device uses various types of DRM software to access DRM-protected content. With this device you can access content protected with WMDRM 10 and OMA DRM 2.0. If certain DRM software fails to protect the content, content owners may ask that such DRM software's ability to access new DRM-protected content be revoked. Revocation may also prevent renewal of such DRM-protected content already in your device. Revocation of such DRM software does not affect the use of content protected with other types of DRM or the use of non-DRM-protected content.

Digital rights management (DRM) protected content comes with an associated licence that defines your rights to use the content.

If your device has OMA DRM-protected content, to back up both the licence and the content, use the backup feature of Nokia Ovi Suite.

Other transfer methods may not transfer the licences which need to be restored with the content for you to be

www.nokia.com/support

able to continue the use of OMA DRM-protected content after the device memory is formatted. You may also need to restore the licence in case the files on your device get corrupted.

If your device has WMDRM-protected content, both the licence and the content will be lost if the device memory is formatted. You may also lose the licence and the content if the files on your device get corrupted. Losing the licence or the content may limit your ability to use the same content on your device again. For more information, contact your service provider.

Some licences may be connected to a specific SIM card, and the protected content can be accessed only if the SIM card is inserted in the device.

During extended operation such as an active video call and high speed data connection, the device may feel warm. In most cases, this condition is normal. If you suspect the device is not working properly, take it to the nearest authorised service facility.

Battery removing

Switch the device off and disconnect the charger before removing the battery.

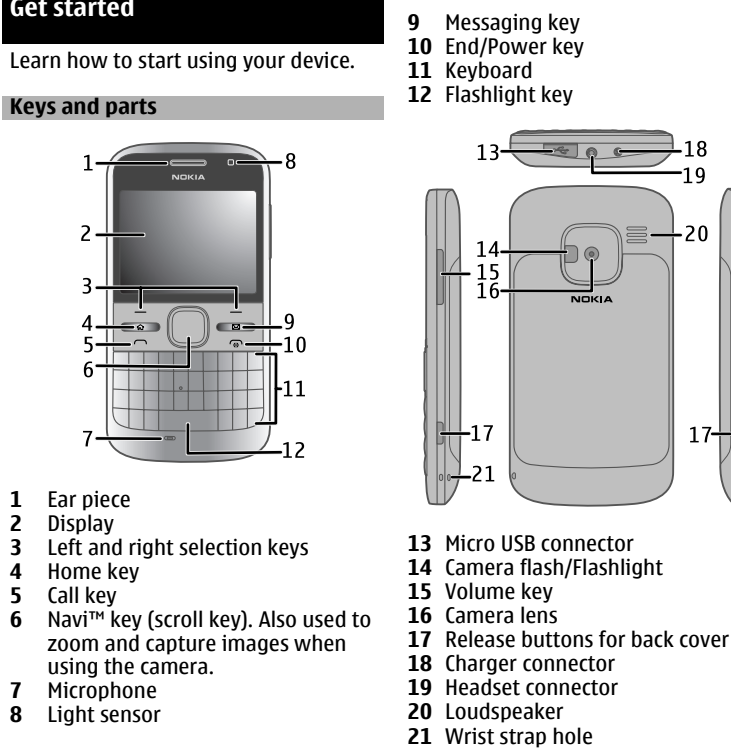
www.nokia.com/support

8 Get started

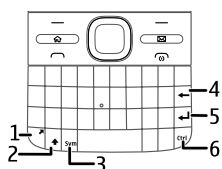
Get started

Learn how to start using your device.

Keys and parts



www.nokia.com/support



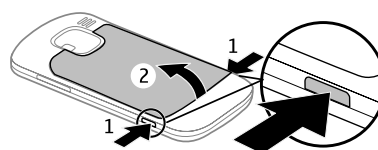
- 1 Function key
- 2 Shift key
- 3 Sym key
- 4 Backspace key
- 5 Enter key
- 6 Ctrl/Mute key

During extended operation such as an active video call and high speed data connection, the device may feel warm. In most cases, this condition is normal. If you suspect the device is not working properly, take it to the nearest authorised service facility.

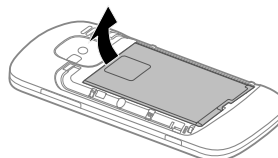
Insert the SIM card and battery

Safe removal. Always switch the device off and disconnect the charger before removing the battery.

- 1 Remove the back cover.

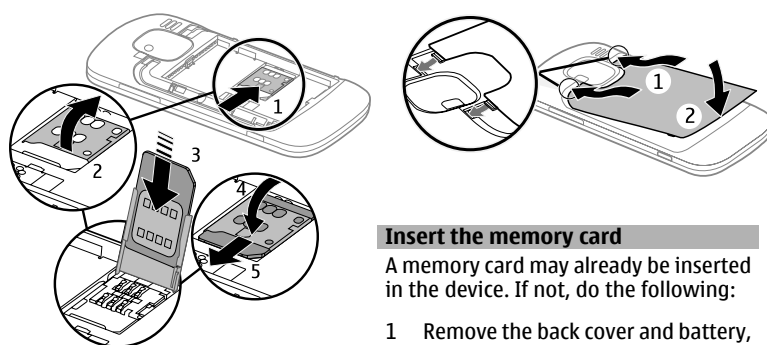


- 2 Remove the battery, if inserted.

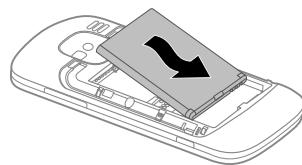


- 3 Slide the SIM card holder to unlock it, and swing it open. Insert the SIM card, with the contact area facing down, and swing the holder back. Slide the card holder to lock it.

10 Get started



- 4 Line up the battery contacts, and insert the battery.

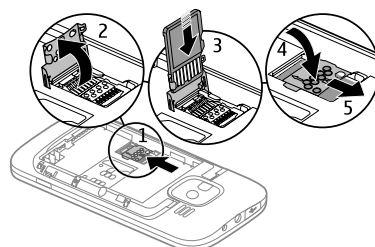


- 5 Replace the back cover.

Insert the memory card

A memory card may already be inserted in the device. If not, do the following:

- 1 Remove the back cover and battery, if inserted.
- 2 Slide the card holder to unlock it, and swing it open.



- 3 Insert the memory card, with the contact area facing down.

www.nokia.com/support

- 4 Swing the card holder back. Slide the card holder to lock it.
- 5 Replace the battery and back cover.

Use only compatible microSD cards approved by Nokia for use with this device. Nokia uses approved industry standards for memory cards, but some brands may not be fully compatible with this device. Incompatible cards may damage the card and the device and corrupt data stored on the card.

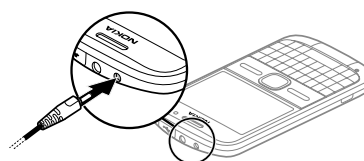
Remove the memory card

- 1 Switch the device off.
- 2 Remove the back cover and the battery.
- 3 Open the memory card holder, and remove the memory card. Close the memory card holder.
- 4 Replace the battery and back cover.

Charge the battery

Your battery has been partially charged at the factory. If the device indicates a low charge, do the following:

- 1 Connect the charger to a wall outlet.
- 2 Connect the charger plug to the device.



If you are using a USB charger, connect the charger plug to the USB connector.

- 3 When the device indicates a full charge, disconnect the charger from the device, then from the wall outlet.

You do not need to charge the battery for a specific length of time, and you can use the device while it is charging. If the battery is completely discharged, it may take several minutes before the charging indicator appears on the display or before any calls can be made.

Charging with the USB data cable

Charging with the USB data cable is slower than charging with the charger. Charging with the USB data cable may not work if you use a USB hub. USB hubs may be incompatible for charging a USB device.

12 Get started

When the USB data cable is connected, you can transfer data at the same time as charging.

- 1 Connect a compatible USB device to your device using a compatible USB data cable.
Depending on the type of the device that is used for charging, it may take a while for charging to start.
- 2 If the device is switched on, select from the available USB modes.

Lock or unlock the keyboard

Lock the keyboard

In the home screen, select Menu, and quickly press the right selection key.

Set the keyboard to lock automatically after a defined length of time

Select Menu > Ctrl. panel > Settings and General > Security > Phone and SIM card > Keypad autolock period > User defined, and select the desired length of time.

Unlock the keyboard

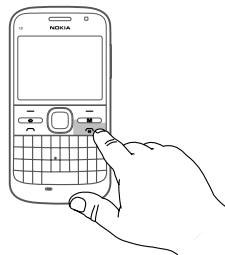
Select Unlock > OK.

When the device or keypad is locked, calls may be possible to the official emergency number programmed into your device.

Switch the device on and off

To switch on the device:

- 1 Press and hold the power key.



- 2 If the device asks for a PIN code or lock code, enter it, and select OK. The preset lock code is 12345. If you forget the code and your device is locked, your device will require service and additional charges may apply. For more information, contact a Nokia Care point or your device dealer.

www.nokia.com/support

To switch off the device, press the power key briefly, and select **Switch off!**.

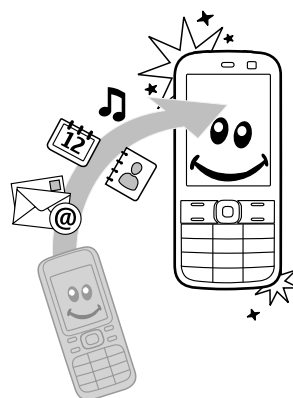
Antenna locations

Your device may have internal and external antennas. Avoid touching the antenna area unnecessarily while the antenna is transmitting or receiving. Contact with antennas affects the communication quality and may cause a higher power level during operation and may reduce the battery life.



Copy content from your old device

You can use the Switch application to copy content such as phone numbers, addresses, calendar items, and images from your previous compatible Nokia device to your new device.



Copy content for the first time

- 1 To retrieve data from the other device for the first time, on your device, select **Menu > Ctrl. panel > Switch**.
- 2 Pair the two devices. To have your device search for devices with Bluetooth connectivity, select **Continue**. Select the device from which you want to transfer content. You are asked to enter a code on your device. Enter a code (1-16 digits), and select **OK**. Enter the

www.nokia.com/support

14 Get started

same code on the other device, and select **OK**. The devices are now paired.

If your old Nokia device does not have the Switch application, your new device sends it in a message. Open the message in the old device, and follow the instructions on the display.

- 3 On your device, select the content you want to transfer from the other device.

When the transfer has started, you can cancel it and continue later.

Content is transferred from the memory of the other device to the corresponding location in your device. The transfer time depends on the amount of data to be transferred.

The type of content that can be transferred depends on the model of the device from which you want to transfer content. If that device supports synchronisation, you can also synchronise data between the devices. Your device notifies you if the other device is not compatible.

Nokia Ovi Suite

Nokia Ovi Suite is a set of applications that you can install to a compatible PC. Ovi Suite groups all available applications in a launcher window from which you can open the applications. Ovi Suite may be included on a memory card, if provided with your device.

You can use Ovi Suite to synchronise contacts, calendar, and to-do and other notes between your device and a compatible PC application. You can also use Ovi Suite to transfer bookmarks between your device and compatible browsers, and transfer images and video clips between your device and a compatible PC.

Pay attention to synchronisation settings. Data deletion as part of normal synchronisation process is determined by the settings selected.

To use Ovi Suite, you need a PC that runs Microsoft Windows XP (SP2 or newer) or Windows Vista (SP1 or newer), and is compatible with a USB data cable or with Bluetooth connectivity.

Ovi Suite is not compatible with Apple Macintosh computers.

www.nokia.com/support

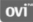
For further information on Ovi Suite, see the built-in help, or go to www.nokia.com/support.

Install Nokia Ovi Suite

- 1 Ensure the memory card is inserted in your Nokia E5-00.
- 2 Connect the USB cable. Your PC recognises the new device and installs the necessary drivers. This can take several minutes to complete.
- 3 Select **Mass storage** as the USB connection mode in your device. Your device is displayed in the Windows file browser as a Removable Disk.
- 4 Open the root of the memory card drive with the Windows file browser, and select the Ovi Suite installation file.
- 5 The installation is started. Follow the instructions.

Tip: To update Ovi Suite, or if you have problems when installing Ovi Suite from the memory card, copy the installation file to your PC, and install from your PC.

Visit Ovi by Nokia

 With Ovi by Nokia, you can find new places and services, and stay in touch with your friends. You can do, for example, the following:

- Create a mail account
- Plan trips and view locations on a map
- Download games, applications, videos, and ringing tones to your device
- Purchase music


Some downloadable items are free of charge, others you may need to pay for.

The available services may vary by country or region, and not all languages are supported.

To access Nokia's Ovi services, go to www.ovi.com, and register your own Nokia account.

For more information, go to www.ovi.com/support.

About Ovi Store

 In Ovi Store, you can download mobile games, applications, videos,

www.nokia.com/support

16 Access codes

images, themes, and ringing tones to your device. Some items are free of charge; others you need to pay for with your credit card or in your phone bill. The availability of payment methods depends on your country of residence and your network service provider. Ovi Store offers content that is compatible with your mobile device and relevant to your tastes and location.

Access codes

If you forget any of the access codes, contact your service provider.

Personal identification number (PIN) code — This code protects your SIM card against unauthorised use. The PIN code (4 - 8 digits) is usually supplied with the SIM card. After three consecutive incorrect PIN code entries, the code is blocked, and you need the PUK code to unblock it.

UPIN code — This code may be supplied with the USIM card. The USIM card is an enhanced version of the SIM card and is supported by 3G mobile phones.

PIN2 code — This code (4 - 8 digits) is supplied with some SIM cards, and is

required to access some functions in your device.

Lock code (also known as security code) — The lock code helps you to protect your device against unauthorised use. The preset code is 12345. You can create and change the code, and set the device to request the code. Keep the new code secret and in a safe place separate from your device. If you forget the code and your device is locked, your device will require service. Additional charges may apply, and all the personal data in your device may be deleted. For more information, contact a Nokia Care Point or your device dealer.

Personal Unblocking Key (PUK) code and PUK2 code — These codes (8 digits) are required to change a blocked PIN code or PIN2 code, respectively. If the codes are not supplied with the SIM card, contact the network service provider whose SIM card is in your device.

UPUK code — This code (8 digits) is required to change a blocked UPIN code. If the code is not supplied with the USIM card, contact the network service provider whose USIM card is in your device.

International Mobile Equipment Identity (IMEI) number — This number

www.nokia.com/support

(15 or 17 digits) is used to identify valid devices on the GSM network. Devices that are, for example, stolen, can be blocked from accessing the network. The IMEI number for your device can be found under the battery.

Basic use

Learn how to use the basic features of your device.

Home screen

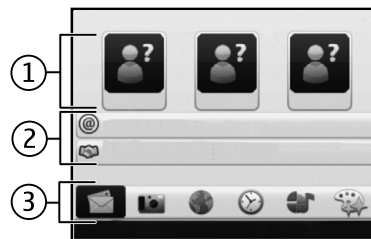
Learn how to use and personalise your home screen, and organise the content to your liking.

Home screen

The home screen is your starting point where you can collect all your important contacts and application shortcuts.

When you have switched on the device, and it is registered to a network, the device is in the home screen view.

Use the scroll key to navigate in the home screen.



The home screen consists of the following:

- 1 Contacts bar
- 2 Application plug-ins
- 3 Application shortcuts

To customise application plug-ins and shortcuts, or to change the home screen theme, select **Menu > Ctrl. panel > Settings and General > Personalisation > Standby mode** and the appropriate option. You might not be able to change all shortcuts.

Contacts bar

To add a contact to your home screen, select the Add icon and a contact from the list.

18 Basic use

To create a new contact, select **Options** > **New contact**, enter the details, and select **Done**. You can also add an image to the contact information.

To remove a contact from the home screen, in the contact information view, select the Open icon and **Remove**.

One-touch keys

With the One-touch keys, you can access applications and tasks quickly. Your service provider may have assigned applications to the keys, in which case you cannot change them.



- 1 Home key
- 2 Messaging key

Home key

To access the home screen, press the home key briefly. Press the home key briefly again to access the menu.

To view the list of active applications, press the home key for a few seconds.

When the list is open, press the home key briefly to scroll the list. To open the selected application, press the home key for a few seconds, or press the scroll key. To close the selected application, press the backspace key.

Leaving applications running in the background increases the demand on battery power and reduces the battery life.

Messaging key

To open the Messaging application, press the messaging key.

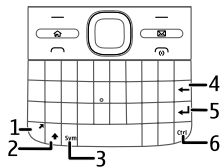
To start writing a new message, press and hold the messaging key.

When you press the messaging key for the first time, you are asked to define the messaging key settings. Follow the instructions on the display. You can modify the settings later.

Write text

The available input methods may vary.

www.nokia.com/support

Use the keyboard

- 1 Function key
- 2 Shift key
- 3 Sym key
- 4 Backspace key
- 5 Enter key
- 6 Ctrl key

Switch between the different character cases


To change between the upper and lower case modes, press the shift key twice. To enter a single upper case letter in lower case mode, or vice versa, press the shift key once, and then the desired alphabet key.

Insert a number or special character printed at the top of a key

Press the function key, and then press the corresponding alphabet key, or press and hold the alphabet key only. To enter several special characters in a row,

press the function key twice quickly, and then press the desired alphabet keys. To return to normal mode, press the function key once.

Insert a special character that is not on the keyboard

Press the sym key, and select  and a character.

Insert a letter that is not on the keyboard

It is possible to insert variations of letters, for example, letters with accents. For example, to insert á, press and hold the sym key, and simultaneously press the A key repeatedly, until the desired character is displayed. The order and availability of letters depends on the selected writing language.

Insert a smiley

Press the sym key, and select a smiley. Smileys are only available for text and multimedia messages.

Tip: To add a recently used special character, while pressing and holding the ctrl key, press the sym key, and from the pop-up menu, select the character.

www.nokia.com/support

20 Basic use


Copy and paste text

- 1 Press and hold the shift key, and scroll to highlight the text you want to copy.
- 2 Press **ctrl + C**.
- 3 Go to the place where you want to paste the text, and press **ctrl + V**.

Change the writing language or activate predictive text input

Select **Options > Input options**.

Predictive text input

To activate predictive text input, select **Options > Input options > Activate prediction**. The indicator  is displayed.

When you start writing a word, your device suggests possible words. When the correct word is found, scroll right to confirm it.

While writing, you can also scroll down to access a list of suggested words. If the desired word is on the list, select the word.

If the word you are writing is not in the dictionary of the device, the device suggests a possible word, while the

word you were writing is shown above the suggested word. Scroll up to select your word. The word is added to the dictionary when you start writing the next word.

To deactivate predictive text input, select **Options > Input options > Deactivate prediction**.

To define the settings for text input, select **Options > Input options > Settings**.

To change the writing language, select **Options > Input options > Writing language**.

Contacts

Stay connected with your online friends

You can synchronise the contact information on your device with contacts you have on Facebook. When you allow synchronisation, you are able to view your contacts' Facebook profile information, such as their picture and status updates, in the Contacts application on your device.

www.nokia.com/support

Synchronising your contacts and retrieving status updates are network services. Roaming and data transfer charges may apply. If the social networking service is not available or functioning correctly, you may not be able to synchronise or retrieve status updates.

Synchronise your contacts

Open the social networking service application, and follow the instructions.

This feature may not be available in certain regions.

Copy contacts

Select **Menu** > **Contacts**.

When you open the contacts list for the first time, the device asks if you want to copy names and numbers from the SIM card to your device.


Start copying

Select **OK**.

Cancel copying

Select **Cancel**.

The device asks if you want to view the SIM card contacts in the contacts list. To

view the contacts, select **OK**. The contacts list opens, and the names stored on your SIM card are indicated with .

Manage names and numbers

Select **Menu** > **Contacts**.

Delete a contact

Go to a contact, and select **Options** > **Delete**.

Delete several contacts

- 1 To mark a contact to be deleted, go to the contact, and select **Options** > **Mark/Unmark**.
- 2 To delete the marked contacts, select **Options** > **Delete**.

Copy a contact

Go to a contact, and select **Options** > **Copy** and the desired location.

Send a contact to another device

Select the contact and **Options** > **View details** > **Options** > **Send business card**.

www.nokia.com/support

22 Basic use

Listen to the voice tag assigned to a contact

Select the contact and **Options** > **View details** > **Options** > **Voice tag details** > **Options** > **Play voice tag**.

When entering contacts or editing voice commands, do not use very short or similar names for different contacts or commands.

Using voice tags may be difficult in a noisy environment or during an emergency, so you should not rely solely upon voice dialling in all circumstances.

Save and edit names and numbers

Select **Menu** > **Contacts**.

Add a new contact to the contacts list

- 1 Select **Options** > **New contact**.
- 2 Fill in the appropriate fields, and select **Done**.

Edit a contact

Select a contact and **Options** > **View details** > **Options** > **Edit**.

Ring tones, images, and call text for contacts

You can define a ringing tone for a contact or group, and an image and a call text for a contact. When the contact calls you, the device plays the selected ringing tone and shows the call text or image if the caller's phone number is sent with the call and your device recognises it.

To define a ringing tone for a contact or a contact group, select the contact or contact group, **Options** > **View details** > **Options** > **Ring tone**, and a ringing tone.

To define the call text for a contact, select the contact and **Options** > **View details** > **Options** > **Add text for call**. Enter the call text, and select **OK**.

- 1 To add an image for a contact saved in the device memory, select the contact and **Options** > **View details** > **Options** > **Add image**.
- 2 Select an image from Photos.

www.nokia.com/support

To remove the ringing tone, select **Default tone** from the list of ringing tones.

To view, change, or remove the image from a contact, select the contact, **Options > View details > Options > Image**, and the desired option.

Calendar **About Calendar**

Select Menu > Calendar.

With calendar, you can create and view scheduled events and appointments, and switch between different calendar views.

In the month view, calendar entries are marked with a triangle. Anniversary entries are also marked with an exclamation mark. The entries of the selected day are displayed as a list.

To open calendar entries, select a calendar view and an entry.

Whenever you see the ► icon, scroll right to access a list of available actions. To close the list, scroll left.

Create calendar entries

Select Menu > Calendar.

You can create the following types of calendar entries:

- Meeting entries remind you of events that have a specific date and time.
- Meeting requests are invitations that you can send to the participants. Before you can create meeting requests you must have a compatible mailbox configured to your device.
- Memo entries are related to the whole day but not to a specific time of the day.
- Anniversary entries remind you of birthdays and special dates. They refer to a certain day but not a specific time of the day. Anniversary entries are repeated every year.
- To-do entries remind you of a task that has a due date but not a specific time of the day.

To create a calendar entry, select a date, **Options > New entry**, and the entry type.

www.nokia.com/support

24 Basic use

To set the priority for meeting entries, select **Options** > **Priority**.

To define how the entry is handled during synchronisation, select **Private** to hide the entry from viewers if the calendar is available online, **Public** to make the entry visible to viewers, or **None** to not copy the entry to your computer.

To send the entry to a compatible device, select **Options** > **Send**.

To make a meeting request of a meeting entry, select **Options** > **Add participants**.

Create meeting requests

Select **Menu** > **Calendar**.

Before you can create meeting requests, you must have a compatible mailbox configured for your device.

To create a meeting entry:

- 1 To create a meeting entry, select a day and **Options** > **New entry** > **Meeting request**.

- 2 Enter the names of the required participants. To add names from your contacts list, enter the first few characters, and select from the proposed matches. To add optional participants, select **Options** > **Add optional participants**.

- 3 Enter the subject.

- 4 Enter the start and end times and dates, or select **All-day event**.

- 5 Enter the location.

- 6 Set an alarm for the entry, if needed.

- 7 For a recurring meeting, set the recurrence time, and enter the end date.

- 8 Enter a description.

To set the priority for the meeting request, select **Options** > **Priority**.

To send the meeting request, select **Options** > **Send**.

Calendar views

Select **Menu** > **Calendar**.

You can switch between the following views:

www.nokia.com/support

- Month view shows the current month and the calendar entries of the selected day in a list.
- Week view shows the events for the selected week in seven day boxes.
- Day view shows the events for the selected day grouped into time slots according to their starting time.
- To-do view shows all to-do items.
- Agenda view shows the events for the selected day in a list.

To change the view, select **Options** > **Change view** and the desired view.

Tip: To open the week view, select the week number.

To move to the next or the previous day in month, week, day, and agenda view, select the desired day.

To change the default view, select **Options** > **Settings** > **Default view**.

Multitasking

You can have several applications open at the same time. To switch between

active applications, press and hold the home key, scroll to an application, and press the scroll key. To close the selected application, press the backspace key.

Example: When you have an active phone call and want to check your calendar, press the home key to access the menu, and open the Calendar application. The phone call remains active in the background.

Example: When you are writing a message and want to check a web site, press the home key to access the menu, and open the Web application. Select a bookmark or enter the web address manually, and select **Go to**. To return to your message, press and hold the home key, scroll to the message and press the scroll key.

Flashlight

The camera flash can be used as a flashlight. To switch the flashlight on or off, in the home screen, press and hold the space bar.

Do not point the flashlight at anyone's eye.

www.nokia.com/support

26 Make calls

Make calls

For more information on different call types, options during calls, speed dialling, voice dialling, call waiting, video sharing, and log, see the extended user guide on the product support pages of the Nokia website.

Voice calls

- 1 In the home screen, enter the phone number, including the area code. To remove a number, press the backspace key.
For international calls, press + (+ replaces the international access code), and enter the country code, area code (omit the leading zero if necessary), and phone number. The + character as a replacement for the international access code may not work in all regions. In this case, enter the international access code directly.
- 2 To make the call, press the call key.
- 3 To end the call (or to cancel the call attempt), press the end key.
Pressing the end key always ends a call, even if another application is active.

To make a call from the contacts list, select **Menu > Contacts**.

Scroll to the desired name, or enter the first letters or characters of the name to the search field.

To call the contact, press the call key. If you have saved several numbers for a contact, select the desired number from the list, and press the call key.

Messaging

Select **Menu > Messaging**.

In Messaging (network service), you can send and receive text messages, multimedia messages, audio messages, and e-mail messages. You can also receive web service messages, cell broadcast messages, and special messages containing data, and send service commands.

Before sending or receiving messages, you may need to do the following:

- Insert a valid SIM card in the device and be located in the service area of a cellular network.

www.nokia.com/support

- Verify that the network supports the messaging features you want to use and that they are activated on your SIM card.
- Define the internet access point settings on the device.
- Define the e-mail account settings on the device.
- Define the text message settings on the device.
- Define the multimedia message settings on the device.

The device may recognise the SIM card provider and automatically configure some of the message settings. If not, you may need to define the settings manually; or contact your service provider to configure the settings.

E-mail **Set up your e-mail**

With the E-mail wizard, you can set up your corporate e-mail account, such as Mail for Exchange, and your internet e-mail account.

When setting up your corporate e-mail, you may be prompted for the name of the server associated with your e-mail

address. For details, contact your company IT department.

- 1 To open the wizard, in the home screen, select **Set up e-mail**.
- 2 Enter your e-mail address and password. If the wizard is not able to configure your e-mail settings automatically, you need to select your e-mail account type, and enter the related account settings.

If your device contains any additional e-mail clients, those are offered to you when you open the wizard.

Send e-mail

Select **Menu > Messaging**.

- 1 Select your mailbox and **Options > Create email**.
- 2 In the To field, enter the recipient's e-mail address. If the recipient's e-mail address can be found in Contacts, start entering the recipient's name, and select the recipient from the proposed matches. If you add several recipients, insert ; to separate the e-mail addresses. Use the Cc field to send a copy to other recipients, or the Bcc field to send a blind copy to

www.nokia.com/support

28 Messaging

recipients. If the Bcc field is not visible, select **Options > More > Show Bcc field**.

- 3 In the Subject field, enter the subject of the e-mail.
- 4 Enter your message in the text area.
- 5 Select **Options** and from the following:

Add attachment — Add an attachment to the message.

Priority — Set the priority of the message.

Flag — Flag the message for follow-up.

Insert template — Insert text from a template.

Add recipient — Add recipients to the message from Contacts.

Editing options — Cut, copy, or paste the selected text.

Input options — Activate or deactivate predictive text input, or select the writing language.

- 6 Select **Options > Send**.

The available options may vary.

Read e-mail

Select **Menu > Messaging**.

Important: Exercise caution when opening messages. Messages may contain malicious software or otherwise be harmful to your device or PC.

To read a received e-mail message, select the mailbox, and select the message from the list.

To reply to the message sender, select **Options > Reply**. To reply to the sender and all other recipients, select **Options > Reply to all**.

To forward the message, select **Options > Forward**.

About Ovi Contacts

With Ovi Contacts, you can stay connected with the people who matter most. Search for contacts, and discover friends in the Ovi community. Keep in touch with your friends - chat, share your location and presence information, and easily follow what your friends are up to and where they are.

www.nokia.com/support

You can also sync your contacts, calendar, and other content between your Nokia device and Ovi. Your important information is stored and kept up to date both in your device and on the web. With Ovi Contacts, you can make your contacts list dynamic and be confident that your contacts are stored in Ovi.

You must have a Nokia account to use the service. Create an account on your mobile device, or go to www.ovi.com on your PC.

Using Ovi Contacts may involve the transmission of large amounts of data through your service provider's network. For information about data transmission charges, contact your network service provider.

Connect to the service

Select **Menu** > **Contacts**, and open the Ovi tab.

Connect to Ovi Contacts

Select **Go online** and the connection method. Use a wireless LAN (WLAN) connection where available.

Cancel the connection

Select **Options** > **Cancel connecting**.

A packet data connection may generate additional data transmission charges. For pricing details, contact your network service provider.

Select **Go online** > **Options** and from the following:

Select — Select the item.

Go online — Connect to the service if you are offline.

My profile — Edit your profile information.

Recommend to friend — Invite a contact to join Ovi Contacts. The invitation is sent as a text message.

Settings — Modify the Ovi Contacts settings.

The available options may vary.

Write and send messages

Select **Menu** > **Messaging**.

Important: Exercise caution when opening messages. Messages may contain malicious software or

30 Messaging

otherwise be harmful to your device or PC.

Before you can create a multimedia message or write an e-mail, you must have the correct connection settings in place.

The wireless network may limit the size of MMS messages. If the inserted picture exceeds this limit, the device may make it smaller so that it can be sent by MMS.


Check the size limit of e-mail messages with your service provider. If you attempt to send an e-mail message that exceeds the size limit of the e-mail server, the message is left in the Outbox folder, and the device attempts to resend it periodically. Sending an e-mail requires a data connection, and continuous attempts to resend the e-mail may increase your data transfer costs. In the Outbox folder, you can delete such a message, or move it to the Drafts folder.

- 1 Select **New message**.
- 2 To send a text or multimedia message (MMS), select **Message**. To send a multimedia message that includes one sound clip, select

Audio message. To send an e-mail, select **E-mail**.

- 3 In the To field, press the scroll key to select recipients or groups from the contacts list, or enter the recipient's phone number or e-mail address. You can also copy and paste the number or address from the clipboard.
- 4 In the subject field, enter the subject of the message for a multimedia or an e-mail message. To hide or display fields when writing a text or multimedia message, select **Options > Message header fields**.
- 5 In the message field, write the message. To add a template or note to a text or multimedia message, select **Options > Insert content > Insert text > Template** or **Note**. To add a template to an e-mail message, select **Options > Insert template**.
- 6 To add a media file to a multimedia message, select **Options > Insert content**, the file type or source, and the desired file. To add a business card, slide, note, or other file to the message, select **Options > Insert content > Insert other**.

www.nokia.com/support

- 7 To capture an image or record a video or sound clip for a multimedia message, select **Options > Insert content > Insert image > New**, **Insert video clip > New**, or **Insert sound clip > New**.
- 8 To insert a smiley to a text or multimedia message, press the sym key, and select the smiley.
- 9 To add an attachment to an e-mail, select **Options > Add attachment**, the memory, and the file to attach.  indicates an e-mail attachment.
- 10 To send the message, select **Options > Send**, or press the call key.

The available options may vary.

Note: The message sent icon or text on your device screen does not indicate that the message is received at the intended destination.

Your device supports text messages beyond the limit for a single message. Longer messages are sent as two or more messages. Your service provider may charge accordingly. Characters with accents, other marks, or some

language options take more space, and limit the number of characters that can be sent in a single message.

You may not be able to send video clips that are saved in the MP4 file format or that exceed the size limit of the wireless network in a multimedia message.

Connectivity

Your device offers several options to connect to the internet or to another compatible device or computer. For more information on other connectivity methods, see the extended user guide at www.nokia.com/support.

Wi-Fi/WLAN connection

Your device can detect and connect to wireless local area networks (WLAN). Using a WLAN, you can connect your device to the internet and compatible devices that have WLAN support.

About WLAN

To use a wireless local area network (WLAN) connection, it must be available in the location, and your device must be connected to the WLAN. Some WLANs are protected, and you need an access

www.nokia.com/support

32 Internet

key from the service provider to connect to them.

Note: Using WLAN may be restricted in some countries. For example, in France, you are only allowed to use WLAN indoors. For more information, contact your local authorities.

Features that use WLAN, or that are allowed to run in the background while using other features, increase the demand on battery power and reduce the battery life.

Use encryption to increase the security of your WLAN connection. Using encryption reduces the risk of others accessing your data.

WLAN wizard

Select **Menu > Ctrl. panel > Connectivity > WLAN wiz..**

The WLAN wizard helps you to connect to a wireless LAN (WLAN) and manage your WLAN connections.

If the search finds WLANs, to create an internet access point (IAP) for a connection and start the web browser

using this IAP, select the connection and **Start web browsing.**

If you select a secured WLAN, you are asked to enter the relevant password. To connect to a hidden network, you must enter the correct network name (service set identifier, SSID).

If you already have the web browser running using the currently active WLAN connection, to return to the web browser, select **Cont.web browsing.**

To end the active connection, select the connection and **Disconnect WLAN.**

Internet

To browse the web, you need to have an internet access point configured in your device. Using the web browser requires network support.

Browse the web


With the Browser application, you can browse web pages.

Select **Menu > Internet > Web.**

www.nokia.com/support

Shortcut: To open the browser, press and hold **0** (zero) in the home screen.

Go to a web page

In the bookmarks view, select a bookmark, or start entering a web address (the  field opens automatically), and select **Go to**.

Some web pages may contain material, such as video clips, that requires a large amount of memory to view. If your device runs out of memory while loading such a web page, insert a memory card. Otherwise, the video clips are not displayed.

Disable graphics to save memory and speed up downloading

Select **Options > Settings > Page > Load content > Text only**.

Refresh the content of the web page

Select **Options > Web page options > Reload**.

View snapshots of web pages you have visited

Select **Back**. A list of pages you have visited during the current browsing session opens. This option is available if

History list is activated in the browser settings.

Block or allow the automatic opening of multiple windows

Select **Options > Web page options > Block pop-ups** or **Allow pop-ups**.

View the shortcut keys

Select **Options > Keypad shortcuts**. To edit the shortcut keys, select **Edit**.

Zoom in and out on a web page

To zoom in, press *****. To zoom out, press **#**.

Tip: To send the browser to the background without exiting the application or closing the connection, press the end key once.

Maps

Maps overview



Select **Menu > Maps**.

Welcome to Maps.

www.nokia.com/support

34 Maps

Maps shows you what is nearby, helps you plan your route, and guides you where you want to go.

- Find cities, streets, and services.
- Find your way with turn-by-turn directions.
- Synchronise your favourite locations and routes between your mobile device and the Ovi Maps internet service.
- Check weather forecasts and other local information, if available.

Note: Downloading content such as maps, satellite images, voice files, guides or traffic information may involve transmission of large amounts of data (network service).

Some services may not be available in all countries, and may be provided only in selected languages. The services may be network dependent. For more information, contact your network service provider.


Almost all digital cartography is inaccurate and incomplete to some extent. Never rely solely on the cartography that you download for use in this device.

Content such as satellite images, guides, weather and traffic information and related services are generated by third parties independent of Nokia. The content may be inaccurate and incomplete to some extent and is subject to availability. Never rely solely on the aforementioned content and related services.

View your location and the map

See your current location on the map, and browse maps of different cities and countries.

Select **Menu > Maps and My position.**

When the GPS connection is active,  marks your current or last known location on the map. If the icon's colours are faint, no GPS signal is available.

If only cell ID based positioning is available, a red halo around the positioning icon indicates the general area you might be in. The accuracy of the estimate increases in densely populated areas.

www.nokia.com/support

Move on the map

Use the scroll key. By default, the map is oriented north.

View your current or last known location

Press 0.

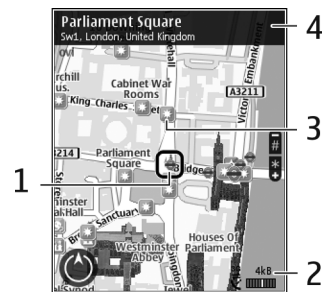
Zoom in or out

Press * or #.

If you browse to an area not covered by maps that are stored on your device and you have an active data connection, new maps are automatically downloaded.

Map coverage varies by country and region.

Map view



- 1 Selected location
- 2 Indicator area
- 3 Point of interest (for example, a railway station or a museum)
- 4 Information area

Change the look of the map

View the map in different modes, to easily identify where you are.

Select **Menu** > **Maps** and **My position**.

Press 1, and select from the following:

Map — In the standard map view, details such as location names or motorway numbers, are easy to read.

36 Maps

Satellite — For a detailed view, use satellite images.

Terrain — View at a glance the ground type, for example, when you are travelling off-road.

Change between 2D and 3D views
Press 3.

Download and update maps

To avoid mobile data transfer costs, download the latest maps and voice guidance files to your computer, and then transfer and save them to your device.

Use the Nokia Ovi Suite application to download the latest maps and voice guidance files to your compatible computer. To download and install Nokia Ovi Suite on your compatible computer, go to www.ovi.com.

Tip: Save new maps to your device before a journey, so you can browse the maps without an internet connection when travelling abroad.

To make sure your device does not use an internet connection, in the main


menu, select **Options > Settings > Internet > Connection > Offline**.

About positioning methods

Maps displays your location on the map using GPS, A-GPS, or cell ID based positioning.

The Global Positioning System (GPS) is a satellite-based navigation system used for calculating your location. Assisted GPS (A-GPS) is a network service that sends you GPS data, improving the speed and accuracy of the positioning.

When you use Maps for the first time, you are prompted to define an internet access point to download map information or use A-GPS.

 indicates the availability of the satellite signals. One bar is one satellite. When the device is searching for satellite signals, the bar is yellow. When there is enough data available to calculate your location, the bar turns green. The more green bars, the more reliable the location calculation.

The Global Positioning System (GPS) is operated by the government of the United States, which is solely

www.nokia.com/support

responsible for its accuracy and maintenance. The accuracy of location data can be affected by adjustments to GPS satellites made by the United States government and is subject to change with the United States Department of Defense civil GPS policy and the Federal Radionavigation Plan. Accuracy can also be affected by poor satellite geometry. Availability and quality of GPS signals may be affected by your location, buildings, natural obstacles, and weather conditions. GPS signals may not be available inside buildings or underground and may be impaired by materials such as concrete and metal.

GPS should not be used for precise location measurement, and you should never rely solely on location data from the GPS receiver and cellular radio networks for positioning or navigation.

The trip meter has limited accuracy, and rounding errors may occur. Accuracy can also be affected by availability and quality of GPS signals.

With cell ID based positioning, the position is determined through the antenna tower your mobile device is currently connected to.

Depending on the available positioning method, the accuracy of positioning may vary from a few metres to several kilometres.

Find a location

Maps helps you find specific locations and types of business you are looking for.

Select **Menu > Maps and Find places.**

- 1 Enter search terms, such as a street address or postcode. To clear the search field, select **Clear**.
- 2 Select **Go**.
- 3 In the list of proposed matches, go to the desired item. To display the location on the map, select **Map**.
To view the other locations of the search result list on the map, scroll up and down with the scroll key.

Return to the list of proposed matches

Select **List**.

www.nokia.com/support

38 Personalisation

Search for different types of nearby places

Select **Browse categories** and a category, such as shopping, accommodation, or transport.

If no search results are found, ensure the spelling of your search terms is correct. Problems with your internet connection may also affect results when searching online.

To avoid data transfer costs, you can also get search results without an active internet connection, if you have maps of the searched area stored on your device.

Personalisation

You can personalise your device by, for example, adjusting the various tones, background images, and screen savers.

Profiles

Select **Menu > Ctrl. panel > Profiles**.

You can adjust and customise the ringing tones, alert tones, and other device tones for different events, environments, or caller groups. The active profile is shown at the top of the

display in the home screen. However, if the active profile is General, only today's date is shown.

To create a new profile, select **Options > Create new**, and define the settings.

To customise a profile, select a profile and **Options > Personalise**.

To activate a profile, select a profile and **Options > Activate**.

To set the profile to be active until a certain time within the next 24 hours, scroll to the profile, select **Options > Timed**, and set the time. When the time expires, the profile changes back to the previously active non-timed profile. When the profile is timed, ⌚ is displayed in the home screen. The Offline profile cannot be timed.

To delete a profile that you created, select **Options > Delete profile**. You cannot delete the predefined profiles.

When the Offline profile is activated, your connection to the cellular network is closed. All radio frequency signals

www.nokia.com/support

between the device and the cellular network are prevented. If you try to send a message, it is placed in the Outbox folder, and is sent only when another profile is activated.

You can also use your device without a SIM card. If you remove the SIM card, the Offline profile is activated.

Important: In the Offline profile you cannot make or receive any calls, or use other features that require cellular network coverage. Calls may still be possible to the official emergency number programmed into your device. To make calls, you must first activate the phone function by changing profiles. If the device has been locked, enter the lock code.

When you use the Offline profile, you can still use a wireless LAN (WLAN), for example, to read your mail or browse the internet. You can also use Bluetooth connectivity. Remember to comply with any applicable safety requirements when you establish and use WLAN or Bluetooth connections.

Find help

For local services and warranty information, please refer to the separate booklet.

Support

When you want to learn more about how to use your product or you are unsure how your device should function, go to www.nokia.com/support, or using a mobile device, nokia.mobi/support. You can also select **Menu > Help > Help** in your device.

If this does not resolve your issue, do one of the following:

- Reboot your device. Switch off the device, and remove the battery. After about a minute, replace the battery, and switch on the device.
- Restore the original factory settings.
- Update your device software.

If your issue remains unsolved, contact Nokia for repair options. Go to www.nokia.com/repair, or in Latin America, www.nokia-latinoamerica.com/centrosdeservicio.

www.nokia.com/support

40 Find help

Before sending your device for repair, always back up the data in your device.

Update device software About software updates

Software updates may include new features and enhanced functions that were not available at the time of purchase of your device. Updating the software may also improve the device performance.

To get a notification when new software is available for your device, register with My Nokia, and subscribe to notifications for text or e-mail messages. For more information, go to www.nokia.com/mynokia.

Warning:

If you install a software update, you cannot use the device, even to make emergency calls, until the installation is completed and the device is restarted. Be sure to back up data before accepting installation of an update.

Downloading software updates may involve the transmission of large amounts of data (network service).

Make sure that the device battery has enough power, or connect the charger before starting the update.

After updating your device software or applications, the instructions related to the updated applications in the user guide or helps may no longer be up to date.

Update software using your PC

Nokia Software Updater is a PC application that enables you to update your device software. To update your device software, you need a compatible PC, broadband internet access, and a compatible USB data cable to connect your device to the PC.

To get more information and to download the Nokia Software Updater application, go to www.nokia.com/softwareupdate, or in Latin America, www.nokia-latinoamerica.com/nsu.

In-device help

Your device contains instructions to help to use the applications in your device.

www.nokia.com/support



To open help texts from the main menu, select **Menu > Help > Help** and the application for which you want to read instructions.

When an application is open, to access the help text for the current view, select **Options > Help**.

When you are reading the instructions, to change the size of the help text, select **Options > Decrease font size** or **Increase font size**.

You may find links to related topics at the end of the help text.
If you select an underlined word, a short explanation is displayed.

Help texts use the following indicators:

-  Link to a related help topic.
-  Link to the application being discussed.

When you are reading the instructions, to switch between help texts and the application that is open in the background, select **Options > Show open apps**, and the desired application.

Accessibility solutions

Nokia is committed to making mobile phones easy to use for all individuals, including those with disabilities. For more information, visit the Nokia website at www.nokiaaccessibility.com.

Prolong battery life

Many features in your device increase the demand on battery power and reduce the battery lifetime. To save battery power, note the following:

- Features that use Bluetooth technology, or allowing such features to run in the background while using other features, increase the demand on battery power. Deactivate Bluetooth technology when you do not need it.
- Features that use wireless LAN (WLAN), or allowing such features to run in the background while using other features, increase the demand on battery power. WLAN on your Nokia device deactivates when you are not trying to connect, not connected to an access point, or not scanning for available networks. To further reduce battery

42 Find help

consumption, you can specify that your device does not scan, or scans less often, for available networks in the background.

- If you have set **Packet data connection** to **When available** in connection settings, and there is no packet data coverage (GPRS), the device periodically tries to establish a packet data connection. To prolong the operating time of your device, select **Menu > Ctrl. panel > Settings and Connection > Packet data > Packet data connection > When needed**.
- The Maps application downloads new map information when you scroll to new areas on the map, which increases the demand on battery power. You can prevent the automatic download of new maps.
- If the signal strength of the cellular network varies much in your area, your device must scan for the available network repeatedly. This increases the demand on battery power.

If the network mode is set to dual mode in the network settings, the

device searches for the 3G network. You can set the device to use only the GSM network. To use only the GSM network, select **Menu > Ctrl. panel > Settings and Phone > Network > Network mode > GSM**.

- The backlight of the display increases the demand on battery power. In the display settings, you can change the length of the time-out period after which the backlight is switched off. Select **Menu > Ctrl. panel > Settings and General > Personalisation > Display > Light time-out**. To adjust the light sensor that observes lighting conditions and adjusts the display brightness, in the display settings, select **Light sensor**.
- To save power, activate the power save mode. Press the power key, and select **Activate power saving**. To deactivate it, press the power key, and select **Deactivate power saving**. You may not be able to change the settings of certain applications when the power save mode is activated.

www.nokia.com/support

Green tips**Save energy**

You do not need to charge your battery so often if you do the following (if available for your device):

- Close applications and data connections, for example, your Bluetooth connection, when not in use.
- Decrease the brightness of the screen.
- Set your device to enter power saver mode after the minimum period of inactivity, if available in your device.
- Deactivate unnecessary sounds, such as key tones.

Recycle

All materials of this device can be recovered as materials and energy. For information on how to recycle your old Nokia products, go to www.nokia.com/

werecycle, or using a mobile device, nokia.mobi/werecycle.

Recycle packaging and user guides at your local recycling scheme.

For more information on the environmental attributes of your device, go to www.nokia.com/ecodeclaration.

Product and safety information**Accessories****Warning:**

Use only batteries, chargers, and accessories approved by Nokia for use with this particular model. The use of any other types may invalidate any approval or warranty, and may be dangerous. In particular, use of unapproved chargers or batteries may present a risk of fire, explosion, leakage, or other hazard.

For availability of approved accessories, please check with your dealer. When you disconnect the power cord of any accessory, grasp and pull the plug, not the cord.

Battery**Battery and charger information**

Your device is powered by a rechargeable battery. The battery intended for use with this device is BL-4D. Nokia may make additional battery models available for this device. This device is intended for use when supplied with power from the following chargers: AC-8. The exact charger model number may vary depending on the type

www.nokia.com/support

44 Product and safety information

of plug. The plug variant is identified by one of the following: E, EB, X, AR, U, A, C, K, or UB.

The battery can be charged and discharged hundreds of times, but it will eventually wear out. When the talk and standby times are noticeably shorter than normal, replace the battery. Use only Nokia approved batteries, and recharge your battery only with Nokia approved chargers designated for this device.

If a battery is being used for the first time or if the battery has not been used for a prolonged period, it may be necessary to connect the charger, then disconnect and reconnect it to begin charging the battery. If the battery is completely discharged, it may take several minutes before the charging indicator appears on the display or before any calls can be made.

Safe removal. Always switch the device off and disconnect the charger before removing the battery.

Proper charging. Unplug the charger from the electrical plug and the device when not in use. Do not leave a fully charged battery connected to a charger, since overcharging may shorten its lifetime. If left unused, a fully charged battery will lose its charge over time.

Avoid extreme temperatures. Always try to keep the battery between 15°C and 25°C (59°F and 77°F). Extreme temperatures reduce the capacity and lifetime of the battery. A device with a hot or cold battery may not work temporarily. Battery performance is particularly limited in temperatures well below freezing.

Do not short-circuit. Accidental short-circuiting can occur when a metallic object such as a coin, clip, or pen causes direct connection of the positive (+) and negative (-) terminals of the battery. (These look like metal strips on the battery.) This might happen, for example, when you carry a spare battery in your pocket or purse. Short-

circuiting the terminals may damage the battery or the connecting object.

Disposal. Do not dispose of batteries in a fire as they may explode. Dispose of batteries according to local regulations. Please recycle when possible. Do not dispose as household waste.

Leak. Do not dismantle, cut, open, crush, bend, puncture, or shred cells or batteries. In the event of a battery leak, prevent battery liquid contact with skin or eyes. If this happens, flush the affected areas immediately with water, or seek medical help.

Damage. Do not modify, remanufacture, attempt to insert foreign objects into the battery, or immerse or expose it to water or other liquids. Batteries may explode if damaged.

Correct use. Use the battery only for its intended purpose. Improper battery use may result in a fire, explosion, or other hazard. If the device or battery is dropped, especially on a hard surface, and you believe the battery has been damaged, take it to a service centre for inspection before continuing to use it. Never use any charger or battery that is damaged. Keep your battery out of the reach of small children.

Nokia battery authentication guidelines

Always use original Nokia batteries for your safety. To check that you are getting an original Nokia battery, purchase it from a Nokia authorised service centre or dealer, and inspect the hologram label using the following steps:

www.nokia.com/support

Authenticate hologram

- 1 When you look at the hologram on the label, you should see the Nokia connecting hands symbol from one angle and the Nokia Original Enhancements logo when looking from another angle.



- 2 When you angle the hologram left, right, down and up, you should see 1, 2, 3 and 4 dots on each side respectively.



Successful completion of the steps is not a total assurance of the authenticity of the battery. If you cannot confirm authenticity or if you have any reason to believe that your Nokia battery with the hologram on the label is not an authentic Nokia battery, you should refrain from using it, and take it to the nearest Nokia authorised service centre or dealer for assistance.

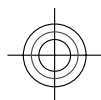
For additional information, refer to the warranty and reference leaflet included with your Nokia device.

Taking care of your device

Your device is a product of superior design and craftsmanship and should be treated with care. The following suggestions will help you protect your warranty coverage.

- Keep the device dry. Precipitation, humidity, and all types of liquids or moisture can contain minerals that will corrode electronic circuits. If your device does get wet, remove the battery, and allow the device to dry completely before replacing it.
- Do not use or store the device in dusty, dirty areas. Its moving parts and electronic components can be damaged.
- Do not store the device in high or cold temperature. High temperatures can shorten the life of electronic devices, damage batteries, and warp or melt certain plastics. When the device warms to its normal temperature from a cold temperature, moisture can form inside the device and damage electronic circuit boards.
- Do not attempt to open the device other than as instructed in this guide.
- Do not drop, knock, or shake the device. Rough handling can break internal circuit boards and fine mechanics.
- Do not use harsh chemicals, cleaning solvents, or strong detergents to clean the device. Only use a soft, clean, dry cloth to clean the surface of the device.
- Do not paint the device. Paint can clog the moving parts and prevent proper operation.
- Use only the supplied or an approved replacement antenna. Unauthorised antennas, modifications, or

www.nokia.com/support



46 Product and safety information

attachments could damage the device and may violate regulations governing radio devices.

- Use chargers indoors.
- Backup all data you want to keep, such as contacts and calendar notes.
- To reset the device from time to time for optimum performance, power off the device and remove the battery.

These suggestions apply equally to your device, battery, charger, or any accessory.

Recycle

Always return your used electronic products, batteries, and packaging materials to dedicated collection points. This way you help prevent uncontrolled waste disposal and promote the recycling of materials. Check product environmental information and how to recycle your Nokia products at www.nokia.com/werecycle, or <http://nokia.mobi/werecycle>.

Additional safety information

Small children

Your device and its accessories are not toys. They may contain small parts. Keep them out of the reach of small children.

Operating environment

This device meets RF exposure guidelines in the normal use position at the ear or at least 1.5 centimetres (5/8 inch) away from the body. Any carry case, belt clip, or holder for body-worn operation should not contain metal and should position the device the above-stated distance from your body.

To send data files or messages requires a quality connection to the network. Data files or messages may be delayed until such a connection is available. Follow the

separation distance instructions until the transmission is completed.

Parts of the device are magnetic. Metallic materials may be attracted to the device. Do not place credit cards or other magnetic storage media near the device, because information stored on them may be erased.

Medical devices

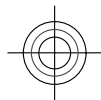
Operation of radio transmitting equipment, including wireless phones, may interfere with the function of inadequately protected medical devices. Consult a physician or the manufacturer of the medical device to determine whether they are adequately shielded from external RF energy. Switch off your device when regulations posted instruct you to do so, for example, in hospitals.

Implanted medical devices

Manufacturers of medical devices recommend a minimum separation of 15.3 centimetres (6 inches) between a wireless device and an implanted medical device, such as a pacemaker or implanted cardioverter defibrillator, to avoid potential interference with the medical device. Persons who have such devices should:

- Always keep the wireless device more than 15.3 centimetres (6 inches) from the medical device.
- Not carry the wireless device in a breast pocket.
- Hold the wireless device to the ear opposite the medical device.
- Turn the wireless device off if there is any reason to suspect that interference is taking place.
- Follow the manufacturer directions for the implanted medical device.

www.nokia.com/support



If you have any questions about using your wireless device with an implanted medical device, consult your health care provider.

Hearing

Warning:

When you use the headset, your ability to hear outside sounds may be affected. Do not use the headset where it can endanger your safety.

Some wireless devices may interfere with some hearing aids.

Your mobile device complies with FCC rules governing hearing aid compatibility. These rules require an M3 microphone or higher. The M value of your device microphone is marked on the device sales package. To determine the M-rating of your hearing aid and compatibility with this device, consult your hearing health professional. For more information about accessibility, see www.nokiaaccessibility.com.

To use a telecoil-equipped hearing aid with this device, activate the hearing aid (T switch) and the device telecoil. The sound quality depends on the type of your hearing aid.

Note: The surface of this device does not contain nickel in the platings. The surface of this device contains stainless steel.

Vehicles

RF signals may affect improperly installed or inadequately shielded electronic systems in motor vehicles such as electronic fuel injection, electronic antilock braking, electronic speed control, and air bag systems. For more information, check with the manufacturer of your vehicle or its equipment.

Only qualified personnel should service the device or install the device in a vehicle. Faulty installation or service may be dangerous and may invalidate your warranty. Check regularly that all wireless device equipment in your vehicle is mounted and operating properly. Do not store or carry flammable liquids, gases, or explosive materials in the same compartment as the device, its parts, or accessories. Remember that air bags inflate with great force. Do not place your device or accessories in the air bag deployment area.

Switch off your device before boarding an aircraft. The use of wireless teledevices in an aircraft may be dangerous to the operation of the aircraft and may be illegal.

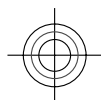
Potentially explosive environments

Switch off your device in any area with a potentially explosive atmosphere. Obey all posted instructions. Sparks in such areas could cause an explosion or fire resulting in bodily injury or death. Switch off the device at refuelling points such as near gas pumps at service stations. Observe restrictions in fuel depots, storage, and distribution areas; chemical plants; or where blasting operations are in progress. Areas with a potentially explosive atmosphere are often, but not always, clearly marked. They include areas where you would be advised to turn off your vehicle engine, below deck on boats, chemical transfer or storage facilities and where the air contains chemicals or particles such as grain, dust, or metal powders. You should check with the manufacturers of vehicles using liquefied petroleum gas (such as propane or butane) to determine if this device can be safely used in their vicinity.

Emergency calls

Important: This device operates using radio signals, wireless networks, landline networks, and user-programmed functions. If your device supports voice calls over the internet (internet calls), activate both the internet calls and the cellular phone. The device may attempt to make emergency calls over both the cellular networks and

www.nokia.com/support



48 Product and safety information

through your internet call provider if both are activated. Connections in all conditions cannot be guaranteed. You should never rely solely on any wireless device for essential communications like medical emergencies.

To make an emergency call:

- 1 If the device is not on, switch it on. Check for adequate signal strength. Depending on your device, you may also need to complete the following:
 - Insert a SIM card if your device uses one.
 - Remove certain call restrictions you have activated in your device.
 - Change your profile from Offline or Flight profile to an active profile.
- 2 Press the end key as many times as needed to clear the display and ready the device for calls.
- 3 Enter the official emergency number for your present location. Emergency numbers vary by location.
- 4 Press the call key.

When making an emergency call, give all the necessary information as accurately as possible. Your wireless device may be the only means of communication at the scene of an accident. Do not end the call until given permission to do so.

Certification information (SAR)

This mobile device meets guidelines for exposure to radio waves.

Your mobile device is a radio transmitter and receiver. It is designed not to exceed the limits for exposure to radio waves recommended by international guidelines. These guidelines were developed by the independent scientific

organisation ICNIRP and include safety margins designed to assure the protection of all persons, regardless of age and health.

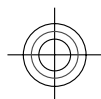
The exposure guidelines for mobile devices employ a unit of measurement known as the Specific Absorption Rate or SAR. The SAR limit stated in the ICNIRP guidelines is 2.0 watts/kilogram (W/kg) averaged over 10 grams of tissue. Tests for SAR are conducted using standard operating positions with the device transmitting at its highest certified power level in all tested frequency bands. The actual SAR level of an operating device can be below the maximum value because the device is designed to use only the power required to reach the network. That amount changes depending on a number of factors such as how close you are to a network base station.

The highest SAR value under the ICNIRP guidelines for use of the device at the ear is 0.88 W/kg.

Use of device accessories may result in different SAR values. SAR values may vary depending on national reporting and testing requirements and the network band. Additional SAR information may be provided under product information at www.nokia.com.

Your mobile device is also designed to meet the requirements for exposure to radio waves established by the Federal Communications Commission (USA) and Industry Canada. These requirements set a SAR limit of 1.6 W/kg averaged over one gram of tissue. The highest SAR value reported under this standard during product certification for use at the ear is 1.18 W/kg and when properly worn on the body is 1.12 W/kg.

www.nokia.com/support



Copyright and other notices

DECLARATION OF CONFORMITY

CE 0434 

Hereby, NOKIA CORPORATION declares that this RM-634 product is in compliance with the essential requirements and other relevant provisions of Directive 1999/5/EC. A copy of the Declaration of Conformity can be found at www.nokia.com/phones/declaration_of_conformity/.

© 2010 Nokia. All rights reserved.

Nokia, Nokia Connecting People, and Navi are trademarks or registered trademarks of Nokia Corporation. Nokia tune is a sound mark of Nokia Corporation. Other product and company names mentioned herein may be trademarks or tradenames of their respective owners.

Reproduction, transfer, distribution, or storage of part or all of the contents in this document in any form without the prior written permission of Nokia is prohibited. Nokia operates a policy of continuous development. Nokia reserves the right to make changes and improvements to any of the products described in this document without prior notice.



Java and all Java-based marks are trademarks or registered trademarks of Sun Microsystems, Inc.

This product is licensed under the MPEG-4 Visual Patent Portfolio License (i) for personal and noncommercial use in connection with information which has been encoded in compliance with the MPEG-4 Visual Standard by a consumer engaged in a personal and noncommercial activity and (ii) for use in connection with MPEG-4 video provided by a licensed video provider. No license is granted or shall be implied for any other use. Additional information, including that related to promotional, internal, and commercial uses, may be obtained from MPEG LA, LLC. See <http://www.mpegla.com>.

TO THE MAXIMUM EXTENT PERMITTED BY APPLICABLE LAW, UNDER NO CIRCUMSTANCES SHALL NOKIA OR ANY OF ITS LICENSORS BE RESPONSIBLE FOR ANY LOSS OF DATA OR INCOME OR ANY SPECIAL, INCIDENTAL, CONSEQUENTIAL OR INDIRECT DAMAGES HOWSOEVER CAUSED.

THE CONTENTS OF THIS DOCUMENT ARE PROVIDED "AS IS". EXCEPT AS REQUIRED BY APPLICABLE LAW, NO WARRANTIES OF ANY KIND, EITHER EXPRESS OR IMPLIED, INCLUDING, BUT NOT LIMITED TO, THE IMPLIED WARRANTIES OF MERCHANTABILITY AND FITNESS FOR A PARTICULAR PURPOSE, ARE MADE IN RELATION TO THE ACCURACY, RELIABILITY OR CONTENTS OF THIS DOCUMENT. NOKIA RESERVES THE RIGHT TO REVISE THIS DOCUMENT OR WITHDRAW IT AT ANY TIME WITHOUT PRIOR NOTICE.

Reverse engineering of software in the device is prohibited to the extent permitted by applicable law. Insofar as this user guide contains any limitations on Nokia's representations, warranties, damages and liabilities, such limitations shall likewise limit any representations, warranties, damages and liabilities of Nokia's licensors.

The third-party applications provided with your device may have been created and may be owned by persons or entities not affiliated with or related to Nokia. Nokia does not own the copyrights or intellectual property rights to the third-party applications. As such, Nokia does not take

www.nokia.com/support

50 Copyright and other notices

any responsibility for end-user support, functionality of the applications, or the information in the applications or these materials. Nokia does not provide any warranty for the third-party applications. BY USING THE APPLICATIONS YOU ACKNOWLEDGE THAT THE APPLICATIONS ARE PROVIDED AS IS WITHOUT WARRANTY OF ANY KIND, EXPRESS OR IMPLIED, TO THE MAXIMUM EXTENT PERMITTED BY APPLICABLE LAW. YOU FURTHER ACKNOWLEDGE THAT NEITHER NOKIA NOR ITS AFFILIATES MAKE ANY REPRESENTATIONS OR WARRANTIES, EXPRESS OR IMPLIED, INCLUDING BUT NOT LIMITED TO WARRANTIES OF TITLE, MERCHANTABILITY OR FITNESS FOR A PARTICULAR PURPOSE, OR THAT THE APPLICATIONS WILL NOT INFRINGE ANY THIRD-PARTY PATENTS, COPYRIGHTS, TRADEMARKS, OR OTHER RIGHTS.

The availability of particular products and applications and services for these products may vary by region. Please check with your Nokia dealer for details and availability of language options. This device may contain commodities, technology or software subject to export laws and regulations from the US and other countries. Diversion contrary to law is prohibited.

FCC/INDUSTRY CANADA NOTICE

Your device may cause TV or radio interference (for example, when using a telephone in close proximity to receiving equipment). The FCC or Industry Canada can require you to stop using your telephone if such interference cannot be eliminated. If you require assistance, contact your local service facility. This device complies with part 15 of the FCC rules. Operation is subject to the following two conditions: (1) This device may not cause harmful interference, and (2) this device must accept any interference received, including interference that may cause undesired operation. Any changes or modifications not expressly approved by Nokia could void the user's authority to operate this equipment.

555555/Issue 1 EN

www.nokia.com/support

Index		— managing	21, 22
		— ringing tones	22
		— voice tags	21
		contacts bar	17
A		E	
access codes	16	e-mail	
antennas	13	— reading	28
audio messages	29	— sending	27, 29
B		— setup	27
battery		F	
— charging	11	flashlight	25
— inserting	9	G	
— saving power	41	general information	39
browser		H	
— bookmarks	32	help application	40
— browsing pages	32	home key	18
C		home screen	17
calendar	23	I	
— creating entries	23	internet browser	32
— meeting requests	24	internet connection	32
— views	24	See also <i>browser</i>	
calls	26	K	
charging the battery	11	keyboard	19
connectors	8		
contacts			
— copying	13, 21		
— images in	22		
— in social networks	20		

www.nokia.com/support

52 Index

keyguard	12	Ovi Suite	14
keypad lock	12		
keys and parts	8	P	
L		personalising your device	38
lock code	12, 16	pictures	
M		— copying	13
Maps	33	PIN code	16
— browsing	34	pin code	12
— changing views	35	PIN2 code	16
— display elements	35	predictive text input	20
— downloading maps	36	profiles	
— finding locations	37	— creating	38
— positioning	36	— personalising	38
memory card	10, 11	PUK codes	16
messaging key	18	S	
MMS (multimedia message service)	29	security code	16
multimedia messages	29	SIM card	
multitasking	25	— inserting	9
N		SMS (short message service)	29
Nokia support information	39	software updates	40
O		support	39
Ovi by Nokia	15	T	
Ovi Contacts	28, 29	text	
Ovi Store	15	— predictive input	20
		text input	19
		text messages	
		— sending	29

www.nokia.com/support

transferring content 13

U

updates 40

UPIN code 16

UPUK code 16

useful information 39

V

videos

— copying 13

voice calls

See *calls*

W

web browser 32

web connection 32

wireless LAN (WLAN) 31

WLAN (wireless local area network) 31

www.nokia.com/support