

TC-300

Windows-Based Terminal

SYSTEM MANUAL

FCC Class B Radio Frequency Interference Statement

Note:

This equipment has been tested and found to comply with the limits for a Class B digital device, pursuant to Part 15 of FCC Rules. These limits are designed to provide reasonable protection against harmful interference in a residential installation. This equipment generates, uses, and can radiate radio frequency energy and, if not installed and used in accordance with the instructions, may cause harmful interference to radio communications. However, there is no guarantee that interference will not occur in a particular installation. If this equipment does cause harmful interference to radio or television reception, which can be determined by turning the equipment off and on, the user is encouraged to try to correct the interference by one or more of the following measures:

1. Reorient or relocate the receiving antenna.
2. Increase the separation between the equipment and receiver.
3. Connect the equipment into an outlet on a circuit different from that to which the receiver is connected.
4. Consult the dealer or an experienced radio/television technician for help.

Any changes or modifications not expressly approved by the party responsible for compliance could void the user's authority to operate this equipment.



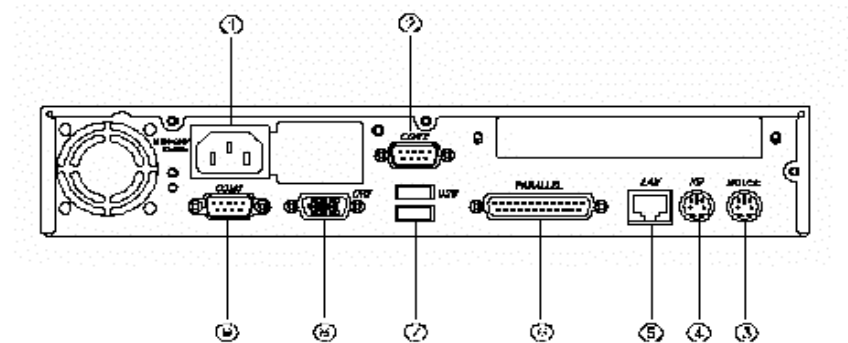
Table of Contents

NOTE:	4
CHAPTER 1 SYSTEM CONFIGURATION	1
1-1 SYSTEM GENERAL INFORMATION	1
1-2 PRECAUTIONS	5
1-3 START TO ASSEMBLY YOUR SYSTEM UNIT	6
1-4 INSTALLATION OF SLIM HDD	7
1-5 INSTALLATION OF SLIM FDD 1.44 MB	8
1-6 INSTALLATION OF SMART CARD READER	9
1-7 INSTALLATION OF CPU	10
1-8 INSTALLATION OF MEMORY	11
CHAPTER 2 SMART CARD SETUP	12
2-1 SOFTWARE DRIVER INSTALL	12
2-2 OPERATION SEQUENCE	14

Chapter 1 System Configuration

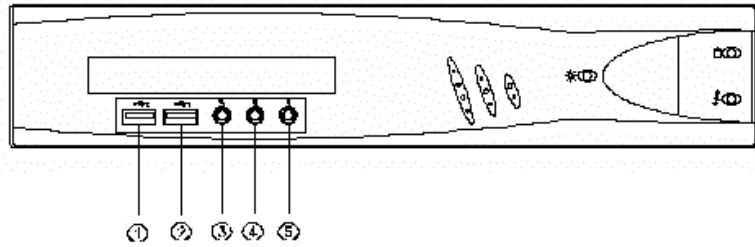
1-1 System General Information

The Rear Panel



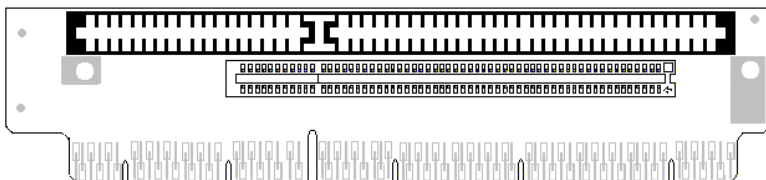
- (1). Power inlet
- (2). COM1 port
- (3). PS/2 Mouse connector
- (4). PS/2 Keyboard connector
- (5). Ethernet RJ-45 connector
- (6). Parallel port
- (7). USB port
- (8). VGA connector
- (9). COM2 port

The Front Panel

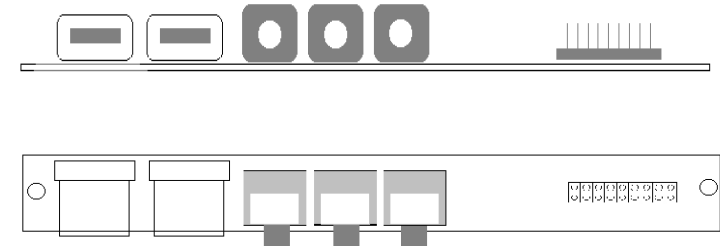


- (1). USB
- (2). USB
- (3). MIC
- (4). Line in
- (5). Line out

<1> ESLOT BOARD

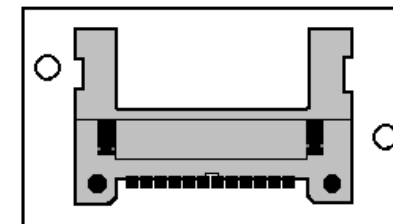


<2> FRONT PANEL BOARD (TCP)

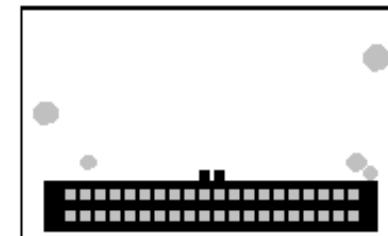


<3> COMPACT FLASH ADAPTER (TCC)

Top site



Bottom site



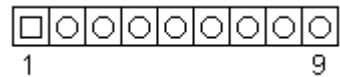
(5) SMART Card Reader CONNECTOR

Motherboard: CON1



Pin#	Assignment
1	Receive data
2	Clear to send
3	Transmit data
4	Request to send
5	GND
6	Reader on
7	Card CTRL
8	VCC5VSB
9	GND

Reader: J1



Pin#	Assignment
1	RX
2	CTS
3	TXD
4	RTS
5	GND
6	Reader On
7	CTRL
8	VCC5VSB
9	GND

1-2 Precautions

Electrostatic discharge (ESD) can easily damage your motherboard.

Observing a few basic precautions can help you safeguard against damage that could result in expensive repairs. Follow the measures below to protect your equipment from static discharge:

- ** Keep the Motherboard and other system components in their anti-static packaging until you are ready to install them.
- ** Touch a grounded surface before you remove any system component from its protective anti-static packaging. A grounded surface within easy reach is the expansion slot covers at the rear of the system case or any other unpainted portion of the system chassis.
- ** During configuration and installation, touch a grounded surface frequently to discharge any static electric charge that may build up in your body. Another option is to wear a grounding wrist strap.
- ** When handling a motherboard or an adapter card, avoid touching its components. Handle the motherboard and adapter cards either by the edges or by the mounting bracket that attaches to the slot opening in the case.

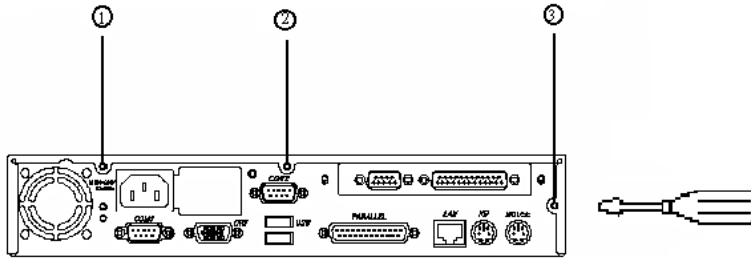
Battery Caution:

Danger of explosion if battery is incorrectly replaced.

Replace only with the same or equivalent type recommended by the manufacturer. Dispose of used batteries according to the manufacturer's instructions.

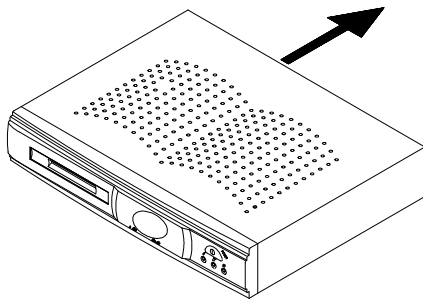
1-3 Start to Assembly Your System Unit

Before assembling your system unit, two steps have to be followed:



Remove ~ ~Š screws

Step 2

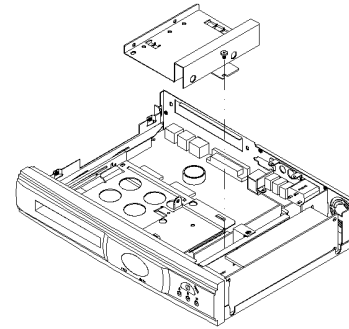


Uncover the case from the system unit

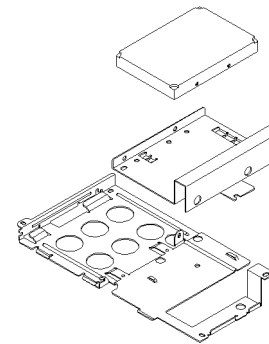
1-4 Installation of Slim HDD

Follow these steps to install the slim HDD

1. Remove the screw from the tray
2. Push the slim HDD tray back to remove it



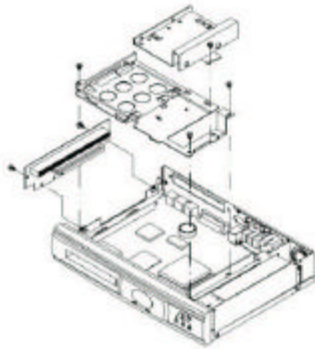
3. Put slim HDD on the tray
4. Insert the four screws and fully tighten with a suitable screwdriver
5. Pick the HDD cable from the packing bag
6. Insert one head with 44 pin to the slim HDD, the other one with 40 pin to motherboard IDE1 and match two HDD power connectors together



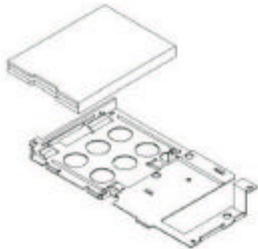
1-5 Installation of Slim FDD 1.44 MB

Follow these steps to install the slim FDD

1. Remove ①~⑤ screws from the unit
2. Take up the ESLOT card
3. Push the slim HDD tray back to remove it and the slim FDD tray



4. Put Slim FDD 1.44MB on the slim FDD 1.44MB tray
5. Insert four screws and fully tighten with a suitable screwdriver
6. Pick the flat cable for floppy from the packing bag
7. The flat cable with one golden finger on each side, insert one head to floppy, and the other one to the motherboard (J8)

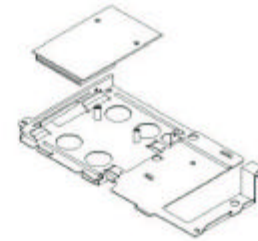


[NOTE]:
The FDD is not available till now.
Doesn't provide this FDD before submitted to FCC.

1-6 Installation of Smart Card Reader

Follow these steps to install the smart card reader

1. Repeat steps 1 to 3 in 1-5 for removing the trays and ESLOT card
2. Put the smart card reader on the tray (Smart card tray)
3. Insert the two screws and fully tighten with a suitable screwdriver
4. Pick the smart card reader flat cable from the packing bag
5. Plug the cable (1*9) pitch: 2.0 mm wire, insert one head to Reader (J1), and the other one to the motherboard (CON1). The red wire is on pin1.



NOTE: If you want to operate the smart card function, please take off the jumper "JP13" on the motherboard.



[NOTE]:
The Smart Card Reader is not available till now.
Doesn't provide this Smart Card Reader before submitted to FCC.

1-7 Installation of CPU

Follow these steps to install the CPU

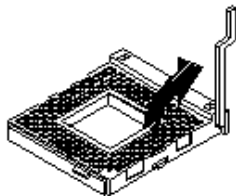
1. Repeat steps 1 to 3 in 1-5 for removing the trays and ESLOT card



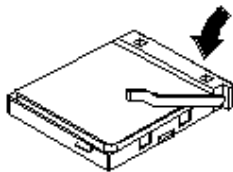
Read the ESD Precautions before you unpack and install the CPU.

Make sure that the system power is off before you install any component.

2. Pull up the CPU socket lever. See step 1 in illustration
3. Insert the CPU into the socket. Make sure that pin 1 of the CPU matches the hole-1 of socket
4. Pull down the socket lever to lock the CPU into the socket. See step 2



Step 1



Step 2

1-8 Installation of Memory

Follow these steps to install Memory

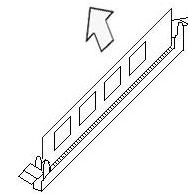
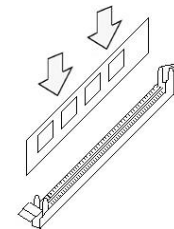
1. Repeat steps 1 and 2 in 1-4 for removing the slim HDD tray



Read the ESD Precautions before you unpack and install the Memory.

Make sure that the system power is off before you install any component.

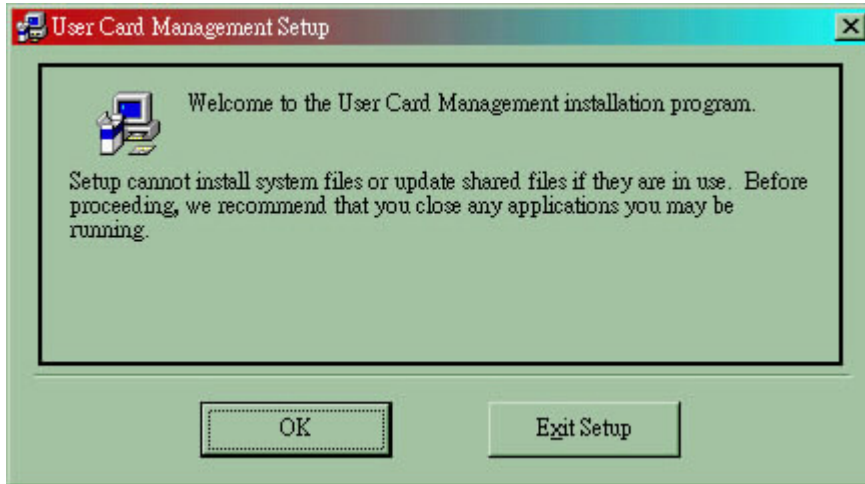
2. Before inserting the DIMM, make sure the pin1 of the DIMM matches with the pin1 on the DIMM socket
3. Insert DIMM into the DIMM sockets at a 90-degree angle and press down



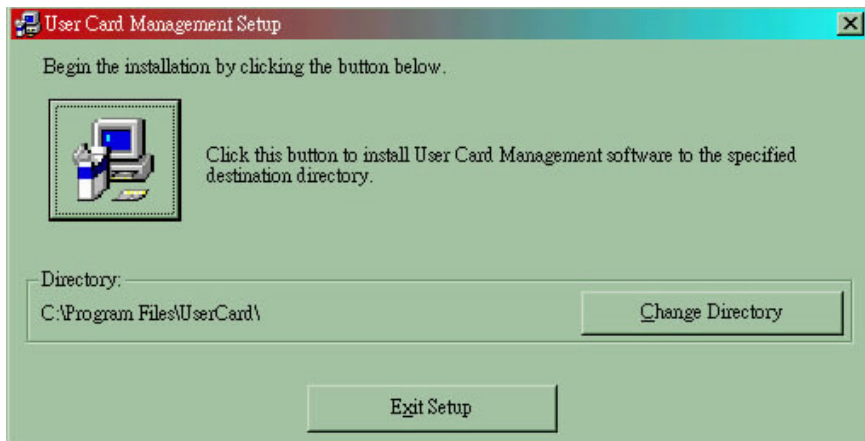
Chapter 2 Smart Card Setup

2-1 Software Driver Install

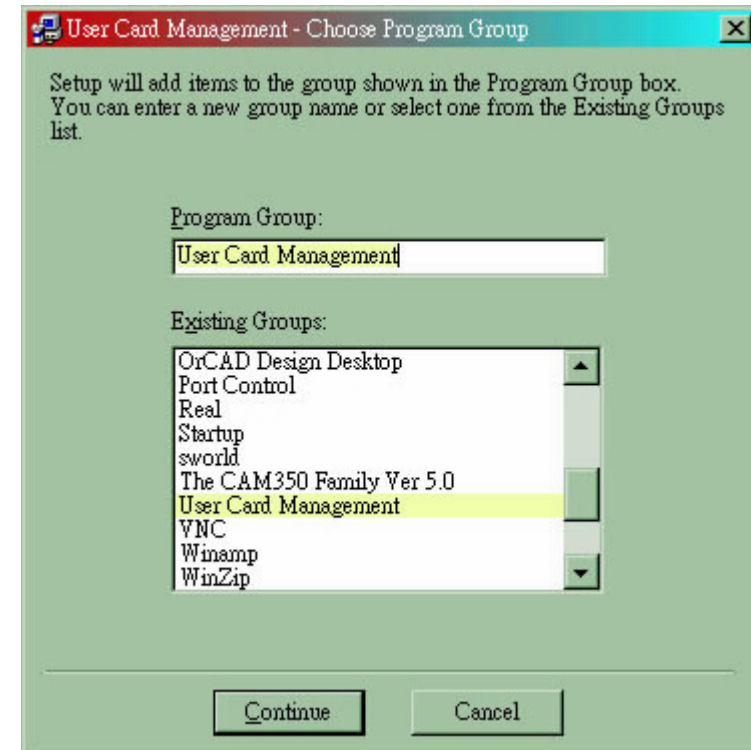
- (1) Enter the IC-Card subdirectory and double-click Setup.exe
- (2) Click "OK" at the Welcome screen



- (3) Click "Setup button" to install User Card Management software.



- (4) Click "Continue" at the Choose Program Group.



- (5) The driver files will now be installed. When finished installing, click the "OK" to complete your installation.

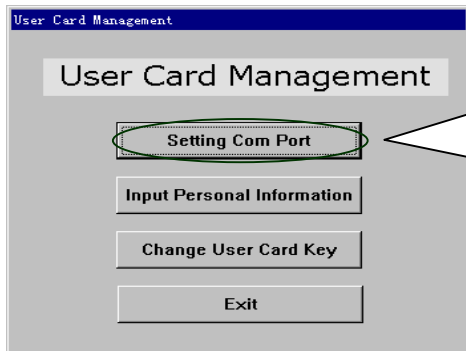


2-2 Operation Sequence

The purpose of this form is to modify User Card management.

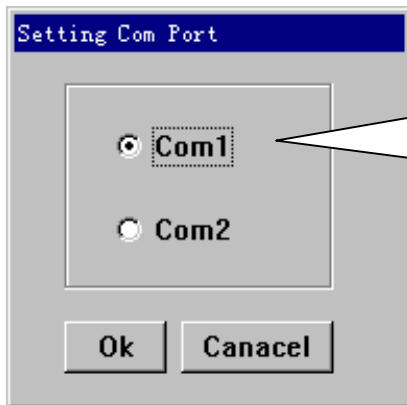
First, set the port, then, input personal information, change User card key and exit.

(1) Set COM Port



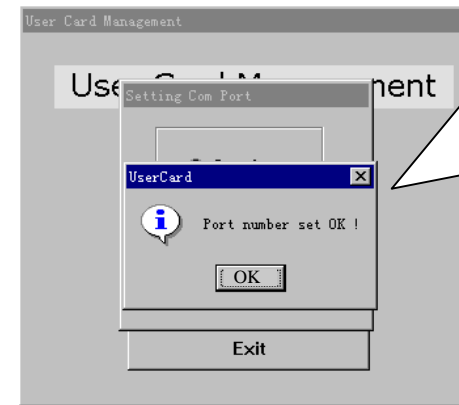
Set COM port which the user writes/reads. Click here into setting COM port.

(2) Setting COM Port



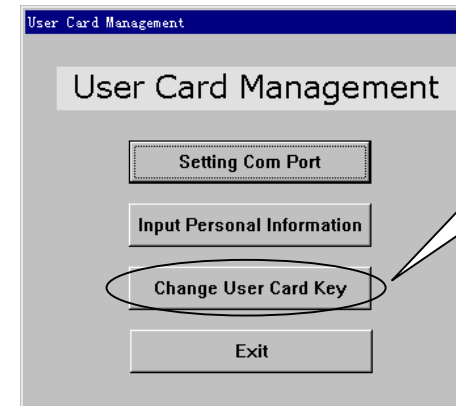
Select "com1" or "com2", press "Ok" to confirm COM port or press "cancel" to reset.

(3) Test COM Port



Press "OK" button to test port, if successes, return message "Port number set OK!" go on step (4). Otherwise return message "Error!" you must reset COM port and test again, that means repeat step 2 and step 3 until success.

(4) Input Personal Information



The card will store some message of the card user. Click here to input it.

(5) Enter Personal Information

Please enter the personal information, name, address, ID and sex into the text box.

Note: Name maximum length is 8 characters. Address maximum length is 132 characters. ID maximum length is 15 characters.

(7) Read Your Personal Information

Press this "Read" button, then you can read "Personal Information" you've written now.

(6) Test Personal Information

Press "Write" button. Return message "finish!" Then, you can "confirm" it.

(8) Change Personal Information

Press this "Edit" button, then you can read/change "Personal Information" as you like now.

(9) Clear Personal Information

Enter Personal Information

Please Enter Personal Information:

Name

Address

ID

Sex ☒ Male ☐ Female

Press "Clear" button, then you can clear all the "Personal Information" of yourself.

(10) Change User Card Key

User Card Management

If you want to change user card key, that means change your password of the card. Just click here.

(11) Validate Current Card Key

Change User Card key

Please enter card key:

Current Key

New Key

Reconfirm New Key

The current key is the key you are using, Enter your current card key in the text box, its maximum length is 8 characters, then click "OK" to validate current card key.

Note: The default of current key of a new user card is "11111111".

(12) Enter your new key and confirm

Change User Card key

Please enter card key:

Current Key

New Key

Reconfirm New Key

The "New Key" is the key you will use. It's useful if you want to change the key. Its max length is 8 characters, input your new key in the text box, then repeating input the new key in "reconfirm new key" text box. Then press "OK".

(13) Validate New Key

The screenshot shows a dialog box titled "Change User Card key". Inside, there is a prompt "Please enter card Key:". Below this prompt are three input fields: "Current Key" containing "*****", "New Key" containing "*****", and "Reconfirm New Key" containing "*****". At the bottom of the dialog are two buttons: "Write" and "Exit".

Press "Write" button, return message "OK". Or select "Exit" to rewrite.

(14) Exit

The screenshot shows a main menu titled "User Card Management". It contains four buttons arranged vertically: "Setting Com Port", "Input Personal Information", "Change User Card Key", and "Exit". The "Exit" button is highlighted with a speech bubble pointing to it.

If you have finished the entire step above correctly, you could exit this form by pressing the "Exit."