

TFT-LCD MONITOR

User's Manual

MODEL : SC-M-1514



PARTS

Please make sure the following items are included with your monitor.
If any items are missing, contact your local dealer or Collins service center.



220V AC Adapter Cord



AC/DC Power Adapter



LCD Monitor



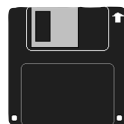
Sound Cable



User's Manual/Warranty Card



15-pin D-SUB signal Cable



Installation Diskette

The warranty period of the products is **ONE YEAR**.

PRODUCT WARRANTY CARD

Collins Inc. warrants its products to be free for **ONE YEAR** from the original purchasing date.

Model	Serial No.
SC-M-1514 <input type="checkbox"/>	

Purchaser's Name	
Address	
Purchased Date	
Purchased agency	

Free Service

In the event that the general products have used for the business purpose, warranty period will be cut and applied to six months.

Type of purchaser's damage		Warranty Details	
		Warranty period	Outof Warranty period
Troubles caused by the defects of performance and function under the normal usage.	Repairs are needed within 10 days from the purchase date.	Product replacement or full refund.	N/A
	Repairs are needed within 1 month from the purchase date.	Product replacement	N/A
	Damage is occurred during the installation and transportation at the purchase date.		
	Repairs are needed for newly replaced product within 1 month from the replaced date.	Full refund.	
	Replacement is impossible		
	Same defects are occurred up to 3 times.	Free Repairs	Charged repairs
	Same defects are occurred up to 4 times.	Product replacement or full refund.	Charged repairs
	Diverse defects are occurred up to 5 times.		Charged repairs
	Collins Inc. loses the product delivered for repairing from the purchaser.		Refund after deducting the depreciation cost and adding 10% purchase price.
	Repairs are impossible because Collins Inc. does not maintain the repair parts within the parts maintenance period.		
Collins Inc. maintains the repair parts but repairs are impossible.		Refund after deducting the depreciation cost.	
Troubles caused by purchaser's intention or negligence	Repairs are impossible.	Product replacement after collecting the cost for charged repairs.	Limited to the extra criteria of Collins Inc.
	Repairs are possible.	Charged repairs	Charged repairs

Charged Service

If you call the service without following the troubleshooting in the manual, you may pay the service charge.
Please read the manual carefully.

1 Troubles caused by purchaser's negligence

- Troubles caused by purchaser's faulty repairs and lack of reasonable care.
- Troubles caused by usage of wrong supply/voltage
- Troubles and damages caused by dropping of product in transportation after the installation.
- Troubles caused by usage of any parts not provided with the product.

2 Troubles caused by other reasons.

Troubles caused by acts of God (fire, damage from salt, flood, and etc.).

TABLE OF CONTENTS

INSTALLATION

Connecting the Monitor	2
Monitor Driver Installation	
• Auto Installation	4
• Manual Installation	5

ADJUSTMENT

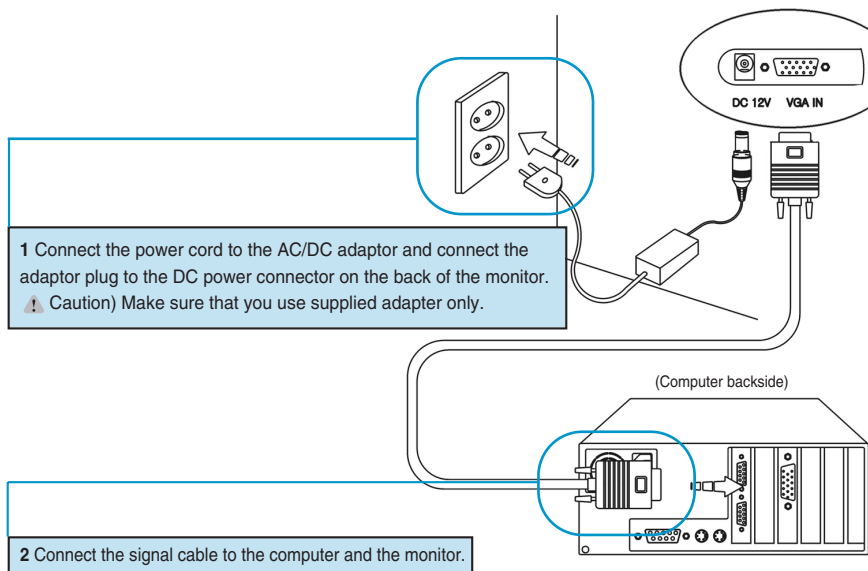
Front Panel	9
Easy Adjustment	10
OSD Menu	11

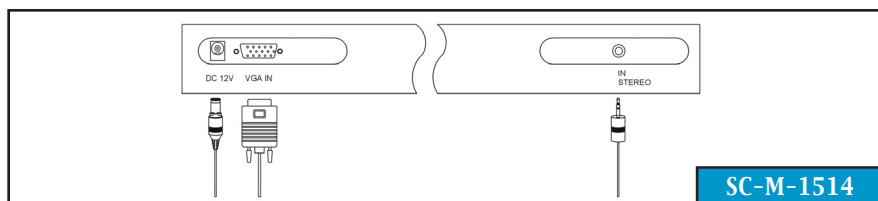
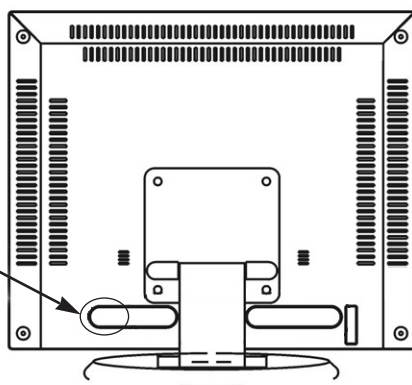
ETC.

Product Features	13
Troubleshooting	14
Safety Precautions	16
Specifications	17
Standard Signal Mode	18
Standard Certification Logos	19
Warranty Card	

CONNECTING THE MONITOR

Make sure that both the computer and the monitor are switched off before connecting.





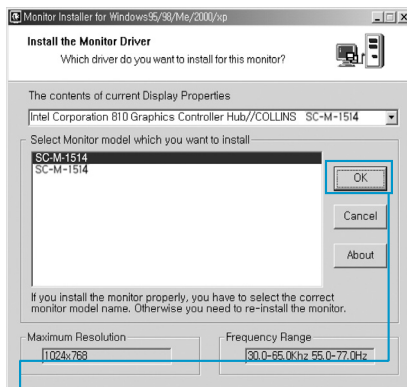
MONITOR DRIVER INSTALLATION

If you install the monitor driver, the resolution and frequency are suitable for the monitor and you can experience the clear screen.

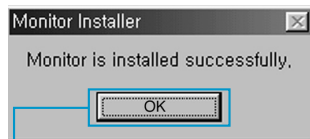
► Auto Installation

If the installation does not work automatically, install the driver manually

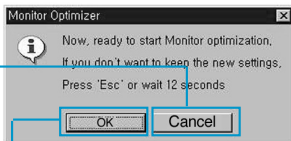
First, turn the computer and the monitor on and insert the installation disk into the floppy disk drive. Double click on "install.exe" and follow the steps below.



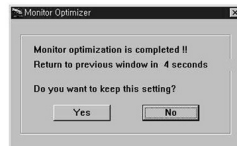
1 Choose a model and click "OK"



2 Click "OK"

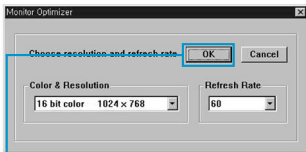


3 Click "OK"



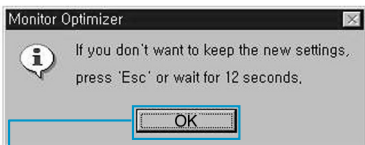
4 If the screen performs normally after appearing the monitor optimization mode, click "Yes" Otherwise, click "No"

- If you do not want the monitor optimization function, click "Cancel"

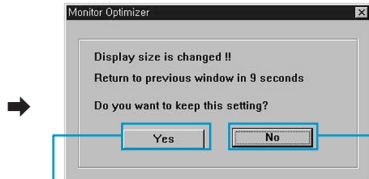


5 Adjust the resolution and vertical frequency and then click "OK"

- This screen shot is for the mode reset.



6 Click "OK"

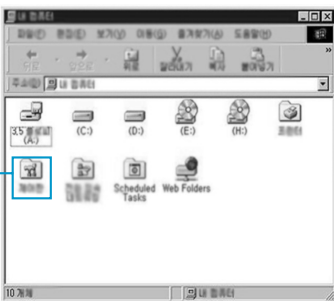


7 Click "Yes"

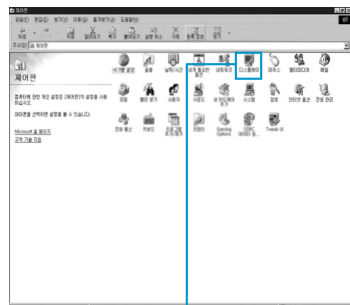
- If you want to change the resolution, click "No". Repeat the above steps and set the optimal resolution.

► Manual Installation

First, turn the computer and the monitor on and insert the installation disk into the floppy disk drive. Click **"Control panel"** and then follow the steps given below.



1 Click "Control panel"

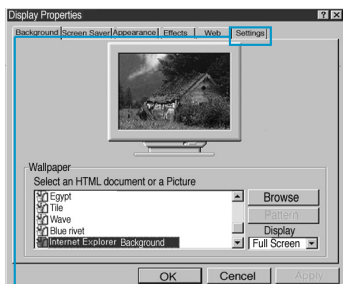


2 Click "Display"

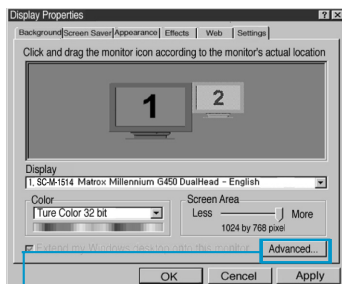
- Or click the right button on the mouse and then click "Properties"

INSTALLATION

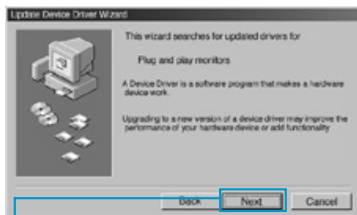
► Manual Installation



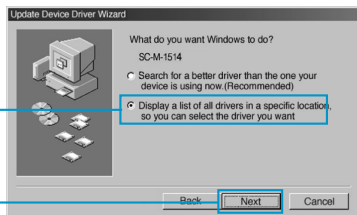
3 Click "Settings"



4 Click "Advanced"

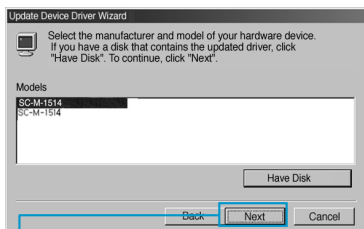


7 Click "Next"



8 Click "Display a list of all the drivers in a specific location, so you can select the driver you want"

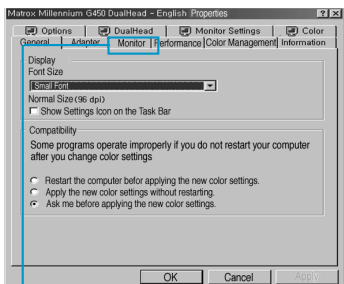
9 Click "Next"



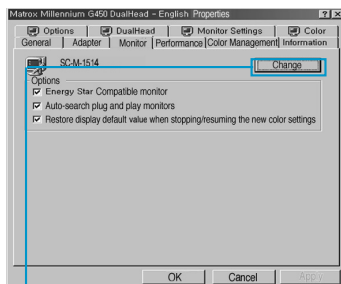
12 Select model and click "Next"



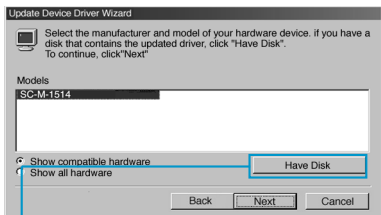
13 Click "Next"



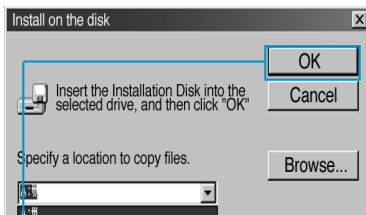
5 Click "Monitor"



6 Click "Change.."



10 Click "Have Disk"



11 Select the driver and click 'OK'.



14 Click "Finish" and then reboot the Windows.

○ Driver installation has been completed.

► Manual Installation

IF YOU HAVE WINDOWS NT..

- ❶ Click "Start" button.
- ❷ Select "Settings" tab and then click "Control Panel".
- ❸ Double click "Display" icon.
- ❹ Click "Settings" bar.
- ❺ Click "All display modes".
- ❻ Select a mode (resolution, colors, vertical frequency).
- ❼ Click "OK".
- ❽ Click "Test"
- ❾ If the screen performs normally, click "Yes". Otherwise, select other mode (lower resolution, colors and vertical frequency).

※ **Note:** If "All display modes" does not exist on your Widows NT, refer to Standard Signal Modes in this manual and select a resolution and vertical frequency.

IF YOU HAVE LINUX..

To command X-Window, you have to create a system file that called XF86Config file.

You can set your monitor with the file.

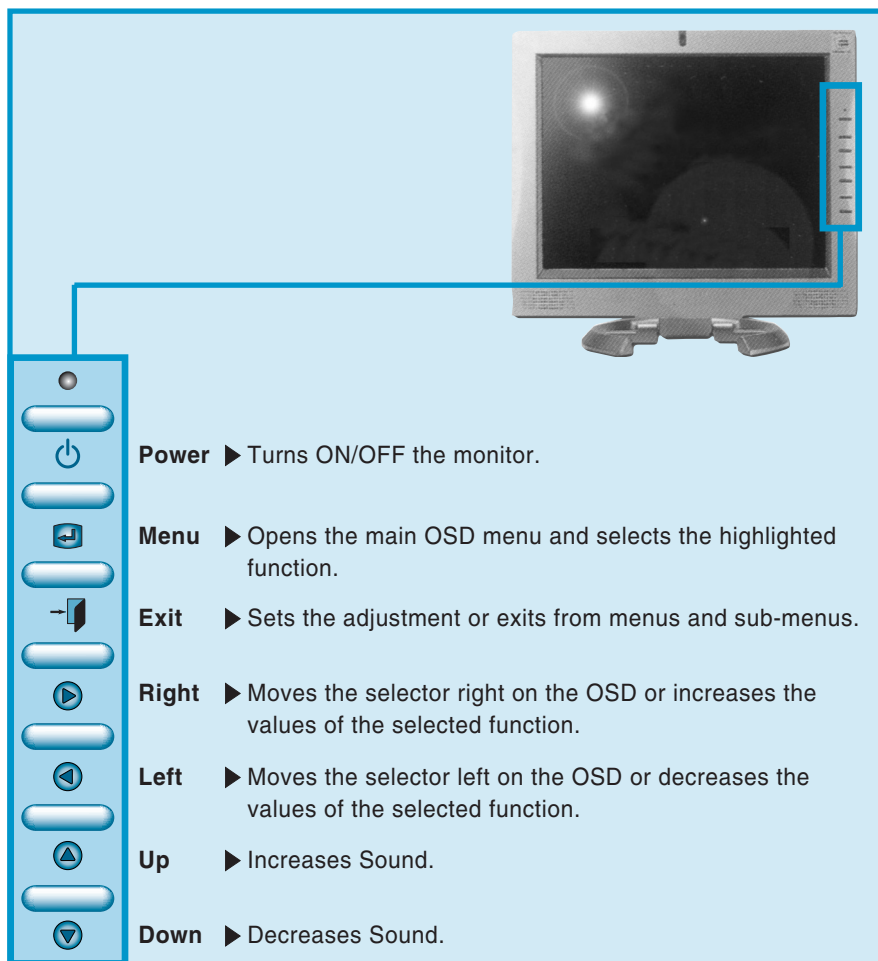
If you command XF86Config, the file can be created.

- ❶ Command XF86Config and then press enter key when the first and second screen appear.
- ❷ In the third screen, you can find mouse settings.
- ❸ Select your mouse.
- ❹ Next, Keyboard setting screen appears.
- ❺ Select your keyboard.
- ❻ Monitor setting screen appears.
- ❼ First, you have to set the horizontal frequency. Refer to Horizontal Frequency in this manual and select one of them. (You can input the frequency directly as well).
- ❽ You have to set the vertical frequency. Refer to Vertical Frequency in this manual and select one of them. (You can input the frequency directly as well)
- ❾ Enter the model name of your monitor.
Monitor information you entered here is not directly related to commanding X-Window.
- ❿ Monitor setting has been completed.
- ⓫ Complete other hardware settings and command X-Window.

FRONT PANEL

If you perform auto adjustment in advance of manual adjustment when you install the monitor, the screen appears more stable.

► Basic functions of the buttons



EASY ADJUSTMENT (HOT KEY)

Each button has an additional function and if you press two buttons simultaneously, you can easily adjust the screen. You can adjust the following functions without OSD menu.

SC-M-1514

- 1 **Exit** : if you press the button once, displays the recent setting values and if you press and hold the button, performs the factory reset.
- 2 **RIGHT / LEFT** : adjusts brightness.
- 3 **UP / DOWN** : adjusts volume.
- 4 **Exit + Menu buttons** : test screen appears and you can test the screen.
- 5 **Exit + Left buttons** : displays the software version.

OSD MENU

To exit from OSD menu, press (←) button once or twice.

After OSD menu disappears, the monitor automatically saves any adjustment you have made.

SC-M-1514 SETTING SEQUENCE



PC MODE



Brightness < [Slider] > 50

Contrast < [Slider] > 50

Phase < [Slider] > 50

Frequency < [Slider] > 50

H-Position < [Slider] > 50

V-Position < [Slider] > 50

Sharpness Sharp Normal Soft

Color Temperature Press > Key

Menu : Enter < / > : Move Exit : Exit

- ▶ Brightness
- ▶ Contrast
- ▶ Fine/Coarse
- ▶ H-frequency
- ▶ H-position
- ▶ V-position
- ▶ Color Temperature
- ▶ Color

OSD MODE



H-Position < [Slider] > 50

V-Position < [Slider] > 50

Half Tone OFF ON

OSD Timeout < [Slider] >

Language < [Slider] > English

Menu : Enter < / > : Move Exit : Exit

- ▶ OSD H-position
- ▶ OSD V-position
- ▶ OSD Transparency
- ▶ OSD Timeout (Menu duration)
- ▶ OSD Language

UTILITY MODE



	Dynamic Brightness	OFF	ON
	Information	Hf : 60.0 KHz	Vf : 75 Hz
		Resolution : 1024 x 768	
	Reset	NO	YES
	DPMS	OFF	ON

- ▶ Brightness
- ▶ Information
- ▶ Factory Reset
- ▶ Power ON / OFF

Menu : Enter ◀ / ▶ : Move Exit : Exit

AUTO MODE



Press Menu Key

Menu : Enter ◀ / ▶ : Move Exit : Exit

PRODUCT FEATURES

Radio Frequency Compatibility Registration (Class B digital device)

This product has been approved for non-business purposes and may be used in any environment, including residential areas. (Class A devices are for business purposes and Class B devices radiate less radio frequency than Class A devices)

Power Saving Feature

◆ *Display Power Manager Signaling (DPMS)*

Power management circuit signaled by the computer system, will reduce power consumption when the computer system is not in use. The power management feature requires that the video card of the computer should support DPMS function.

◆ *Power Consumption*

General CRT monitors consume 100W but LCD monitors consume 30W. An advantage of this monitor is the lowest power consumption in Korea, that is, this monitor consumes 20W that is 33% less than most LCD monitors and 3W on Standby mode.

World best TFT LCD panel Other Feature

This monitor adopts the world best LCD panel manufactured by one of the world best LCD panel manufacturer, Samsung Electronics Co., Ltd.. The 'wise view' logo that is the global logo for TFT LCD monitors of Samsung Electronics Co., Ltd., is attached to this monitor and guarantees the superior quality and performance.

Simple Design

This monitor is equipped with a control board for LCD monitor only that performs the best color display and has simple and easy options. Simple design produces a clean and tidy space.

Other Feature

This monitor is designed to be compatible with any PC configuration. You do not need to substitute hardware or purchase specific software. You only need to connect the signal cable of old CRT monitor.

ETC.

TROUBLESHOOTING

High voltage flows inside of this product and may create a danger of electric shock. Never disassemble or open the monitor. If doing so, you cannot get any warranty, repair and substitution. When the following troubles are occurred, follow the troubleshooting in this manual. If the troubles are occurred continuously, contact service center.

Power indicator is off.

No picture

-Make sure the power cord is properly connected or contact the service center.

"Check Signal Cable" message

-Make sure that the signal cable is firmly connected to the monitor or video sources.
Make sure the power is on.

"Out of Range" message

-The message will appear when the signal of the video card exceeds the maximum resolution and maximum frequency. Set the maximum resolution and frequency suitable for the monitor.

The image is too light.

The image is too dark.

-Adjust the brightness and contrast on the OSD.

Horizontal bars appear to flicker, jitter or shimmer on the image

-Adjust the frequency and perform AUTO menu on the OSD.

ETC.

Display image is not centered.

-Perform AUTO menu on the OSD or adjust the horizontal and vertical position.

Image is not stable and appears to vibrate.

-Check the display resolution and frequency from the computer or video board is an available mode for your monitor. Refer to resolution information on the menu and Standard Signal Modes and retry the settings. (Refer to 18page)

Display image is too small or too large. In case of VGA or SVGA mode, display image may be too small or too large.

- Change the resolution into 1024*768 using setting menu on the display properties.

If you want to change the frequency,

-Frequency should be changed from the video card. Some video cards may not support that function. Please upgrade the driver version and change the frequency. (For specific information, refer to user's manual of computer or video card.)

If you want to change the resolution,

-Click "Control Panel" ? "Display" ? "Settings" and change the resolution.

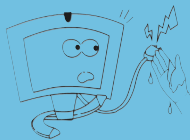
ETC.

SAFETY PRECAUTIONS

The following information is to prevent damages and secure user's safety.

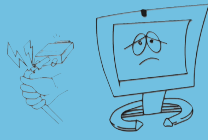
Please read the following information carefully and use the monitor properly.

Power



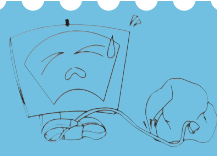
1. Do not hold the plug with your hands wet.

- Doing so may create a danger of electric shock or fire.



2. Never disconnect it by pulling the cord.

- Doing so may create a danger of electric shock or fire.



3. Do not force to bend the cord or put any heavy materials on the cord.

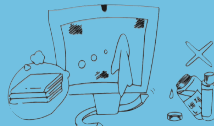
- Doing so may create a danger of electric shock or fire.

Cleaning



1. Never hit the monitor or scratch the monitor with sharp materials.

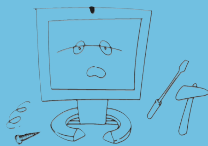
- Doing so may damage the monitor or a danger of electric shock.



2. Unplug the monitor and Use a damp, lint-free cloth for cleaning. Do not use keton-type materials, ethyl alcohol, acid, toluene, ethyl acid, methyl or chloride.

- Doing so may create a danger of electric shock or fire.

Other precautions



1. Never touch the inside of the monitor.

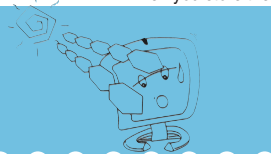
- If you need a service, contact the service center.



2. Keep the monitor away from anything magnetic.

- Noise may appears on the screen.

When you store the monitor, keep the monitor away from direct sunlight and dust.



ETC.

SPECIFICATIONS

L C D	Model	SC-M-1514
	Screen size	38.1cm
	Contrast Scailing	300 : 1
	Display Area	304 mm(W) * 228.1mm(H)
	Pixel Pitch	0.297 mm(W) * 0.297mm(H)
	Type	SAMSUNG SMART TFT LCD
	Viewing Angle	75 / 75 / 55 / 65 (left/right/up/down)
	Response Time	25ms Typ.
	Backlight	4-CCFLs
	Brightness	250cd/m ²
Frequency	H-Frequency	30 ~ 64 KHz
	V-Frequency	55 ~ 75 Hz
Panel Color		16.2M True color
Resolution	Recommended	1024 * 768 @ 60Hz
Power Consumption	Normal Mode	20W
	Power-Saving Mode	3W (Without Audio)
Power	AC	DC 12V 3A, 50~60Hz
	Power-Saving	VESA DPMS
Interface		Analog RGB
Audio	Speaker	2W + 2W (MAX)
	Volume Control	Analog

ETC.

STANDARD SIGNAL MODE

NO	Resolution		Horizontal		Vertical		Pixel Clock
1	VGA	720x400	31.47KHz	N	70.0Hz	P	28.322MHz
2		640x480	31.47KHz	N	60.0Hz	N	25.175MHz
3		640x480	35.00KHz	N	66.7Hz	N	30.240MHz
4		640x480	37.86KHz	N	72.8Hz	N	31.500MHz
5		640x480	37.50KHz	N	75.0Hz	N	31.500MHz
6	SVGA	800x600	35.16KHz	N/P	56.3Hz	N/P	36.000MHz
7		800x600	37.88KHz	P	60.3Hz	P	40.000MHz
8		800x600	48.08KHz	P	72.2Hz	P	50.000MHz
9		800x600	46.87KHz	P	75.0Hz	P	49.500MHz
10		832x624	49.73KHz	N	74.6Hz	N	57.284MHz
11	XGA	1024x768	48.36KHz	N	60.0Hz	N	65.000MHz
12		1024x768	56.48KHz	N	70.1Hz	N	75.000MHz
13		1024x768	60.02KHz	P	75.0Hz	P	78.750MHz

STANDARD CERTIFICATION LOGOS

FCC INFORMATION

NOTE: This equipment has been tested and found to comply with the limits for a Class B digital device, pursuant to part 15 of the FCC Rules. These limits are designed to provide reasonable protection against harmful interference in a residential installation.

This equipment generates, uses and can radiate radio frequency energy and, if not installed and used in accordance with the instructions, may cause harmful interference to radio communications. However, there is no guarantee that interference will not occur in a particular installation. If this equipment does cause harmful interference to radio or television reception, which can be determined by turning the equipment off and on, the user is encouraged to try to correct the interference by one or more of the following measures:

- Reorient or relocate the receiving antenna.
- Increase the separation between the equipment and receiver.
- Connect the equipment into an outlet on a circuit different from that to which the receiver is connected.
- Consult the dealer or an experienced radio/TV technician for help.

CAUTION : Changes or modifications not expressly approved by the manufacturer responsible for compliance could void the user's authority to operate the equipment.

ETC.

► Memo