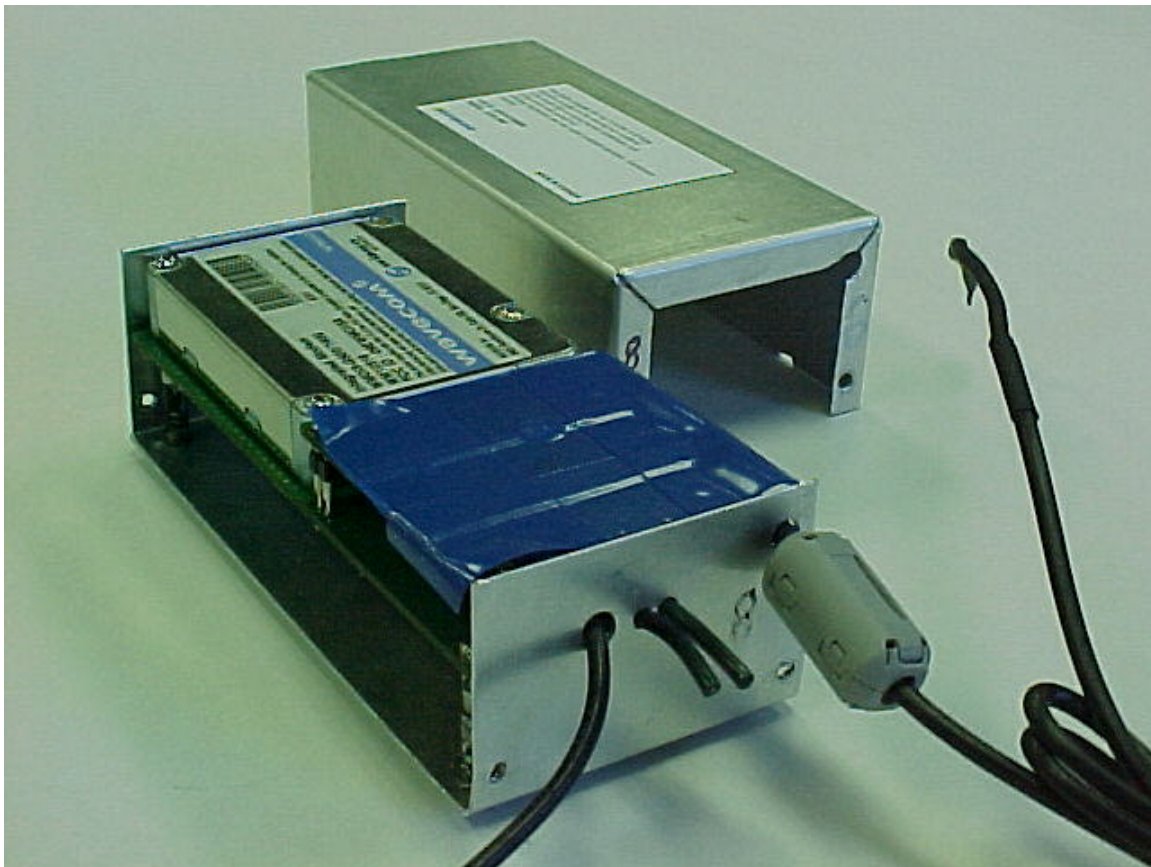


Boomerang Tracking Corporation

**Stolen Vehicle Tracking Device
915.035 - 916.750 Boomerang - Tracking Beacon**

FCC ID#: QPXACR30002

**Photo Six - Open for Inspection
Cover off exposing blue insulating material over the 900MHz Radio**

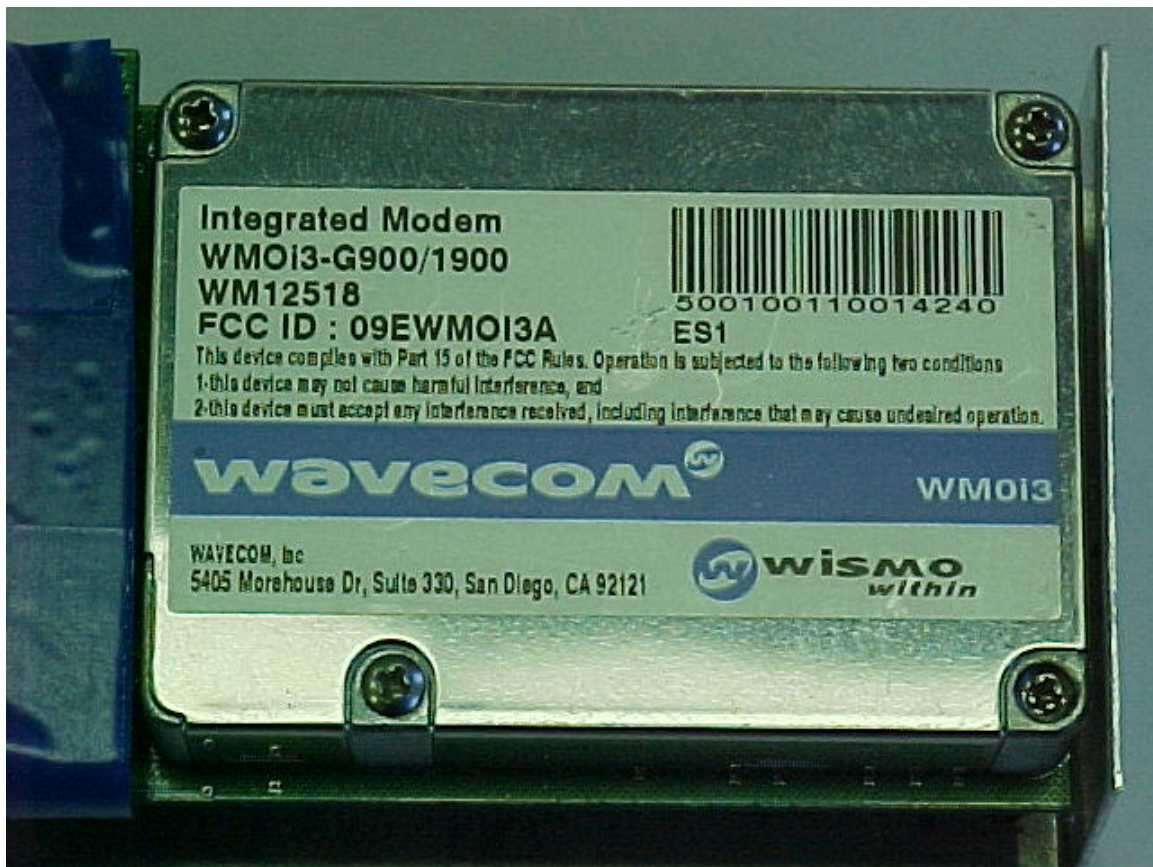


Boomerang Tracking Corporation

**Stolen Vehicle Tracking Device
915.035 - 916.750 Boomerang - Tracking Beacon**

FCC ID#: QPXACR30002

**Photo Seven - GSM Radio from Wavecom, Inc.
GSM is already approved by the FCC with FCC ID Number: 09EWMOI3A**



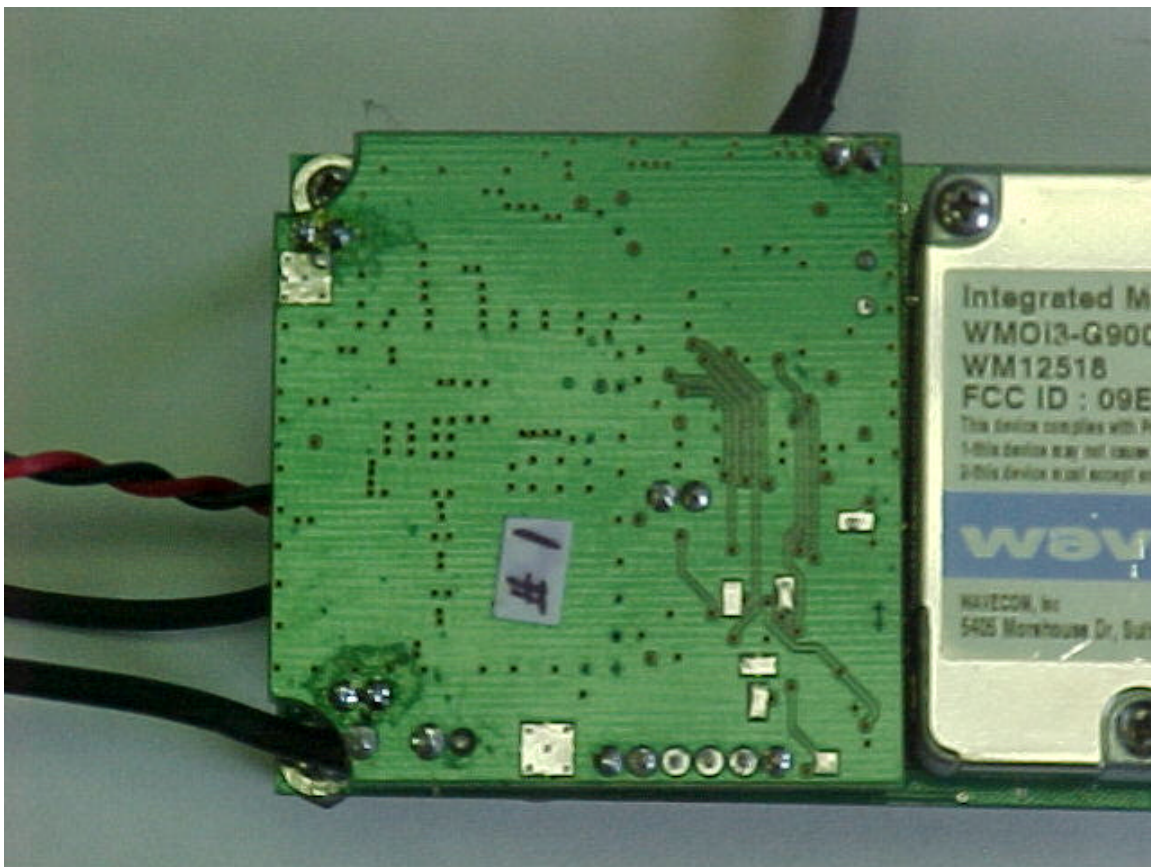
Boomerang Tracking Corporation

**Stolen Vehicle Tracking Device
915.035 - 916.750 Boomerang - Tracking Beacon**

FCC ID#: QPXACR30002

Photo Eight - 900 MHz Radio

Blue insulating material removed to provide a close-up of the PCB Ground

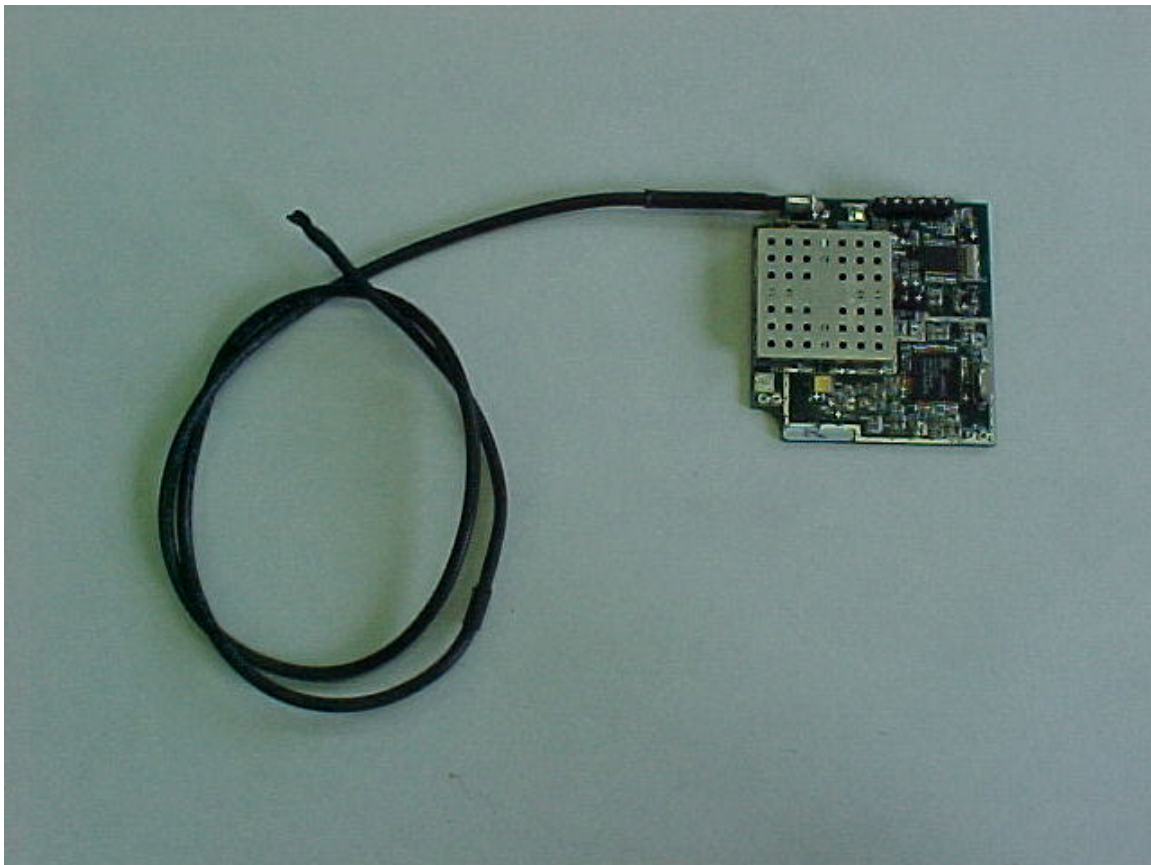


Boomerang Tracking Corporation

**Stolen Vehicle Tracking Device
915.035 - 916.750 Boomerang - Tracking Beacon**

FCC ID#: QPXACR30002

**Photo Nine - 900 MHz Radio with Antenna
Radio PCB removed from Receiver / Digital PCB to provide close-up photos**

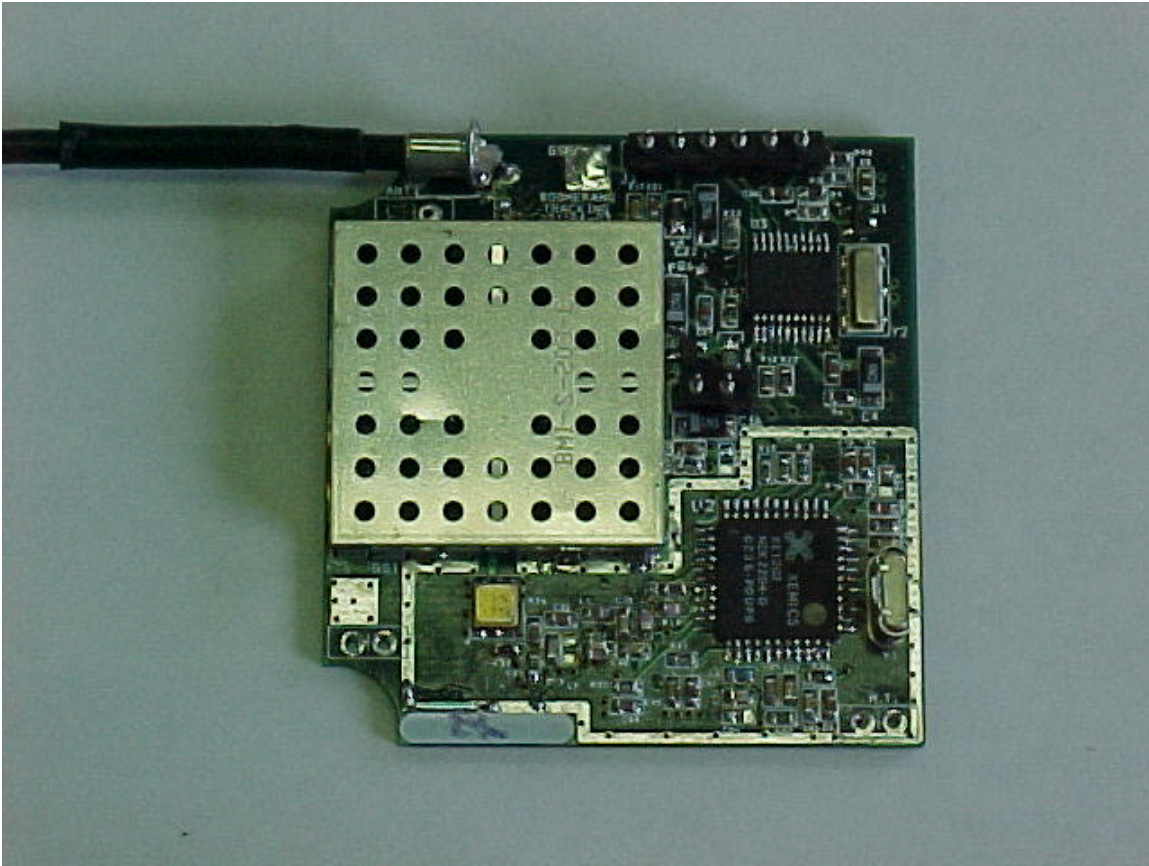


Boomerang Tracking Corporation

**Stolen Vehicle Tracking Device
915.035 - 916.750 Boomerang - Tracking Beacon**

FCC ID#: QPXACR30002

**Photo Ten - 900 MHz Radio PCB Component Side
Radio PCB Component Side showing RF Section with Shield
Antenna lead soldered to PCB**

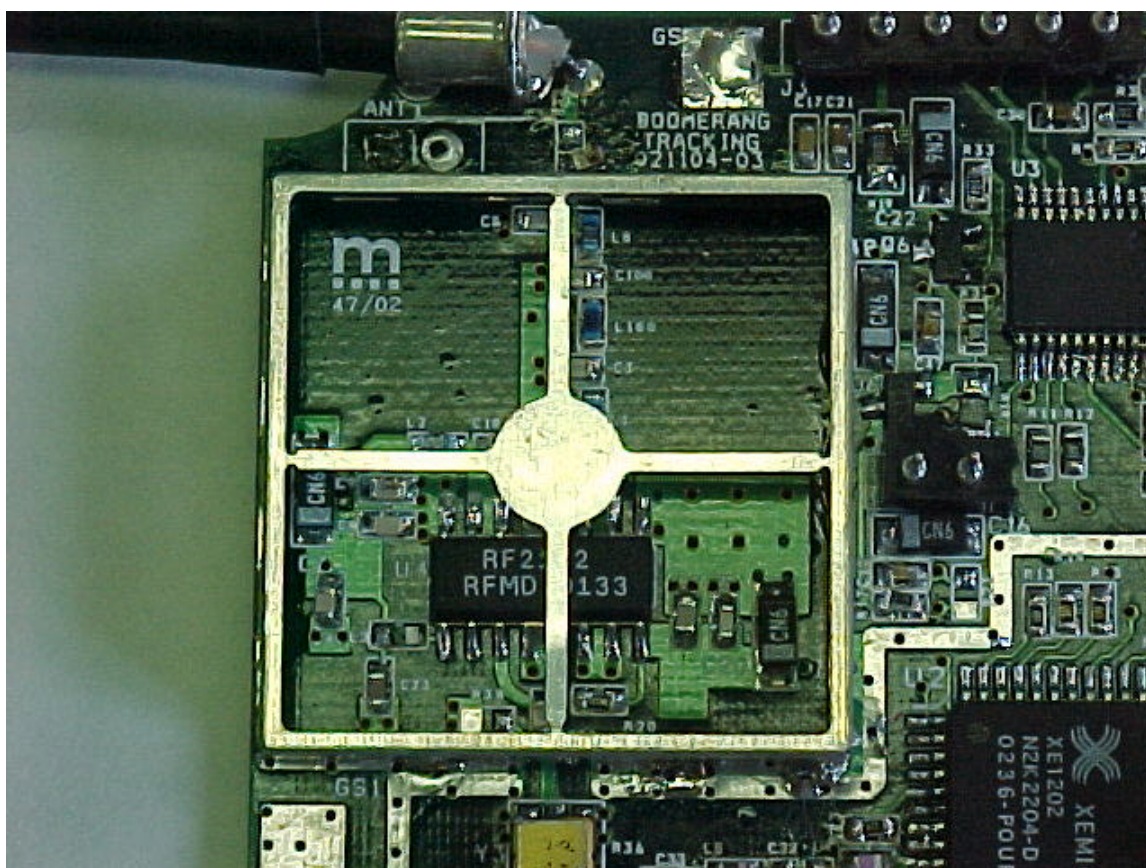


Boomerang Tracking Corporation

Stolen Vehicle Tracking Device
915.035 - 916.750 Boomerang - Tracking Beacon

FCC ID#: QPXACR30002

Photo Eleven - 900 MHz Radio PCB RF Shield Removed
Radio PCB Component Side showing RF Section
with the Shield Cover removed for close-up photo



Boomerang Tracking Corporation

**Stolen Vehicle Tracking Device
915.035 - 916.750 Boomerang - Tracking Beacon**

FCC ID#: QPXACR30002

Photo Twelve - Digital / Receiver PCB

**Digital / Receiver PCB which provides the link between the Key Chain Transmitter,
Boomerang -Tracking Beacon and the GSM Transceiver**

