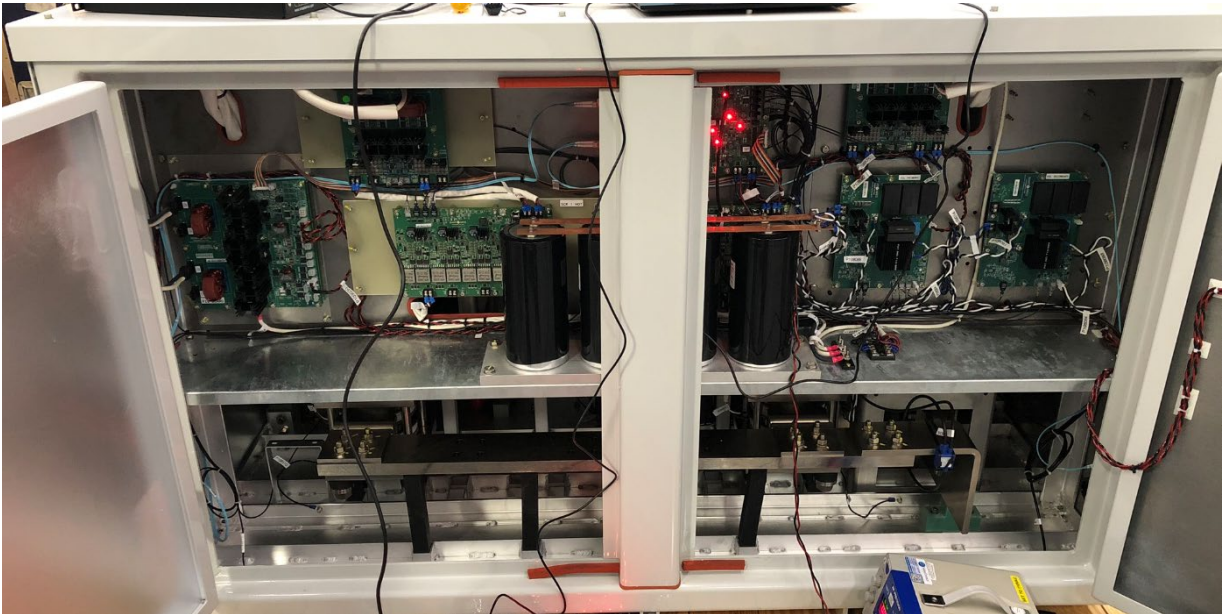
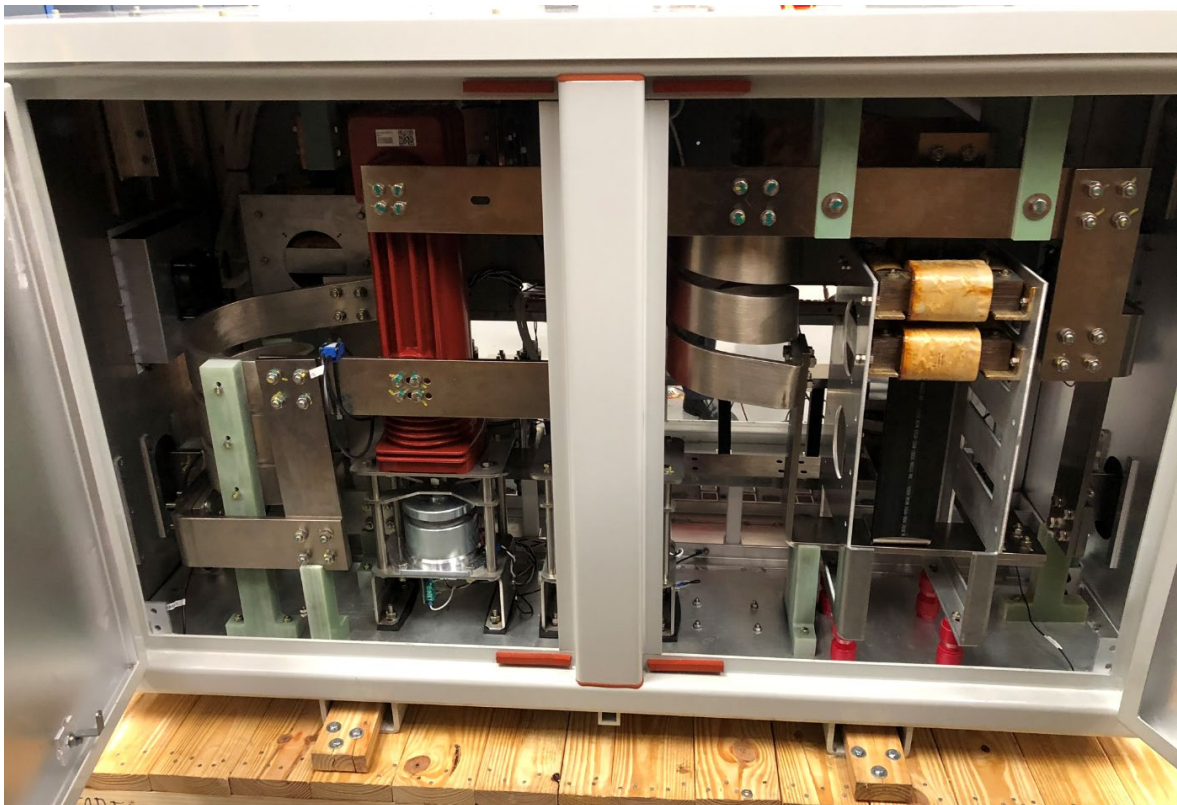


## Smart-Bypass Model 2000-XX

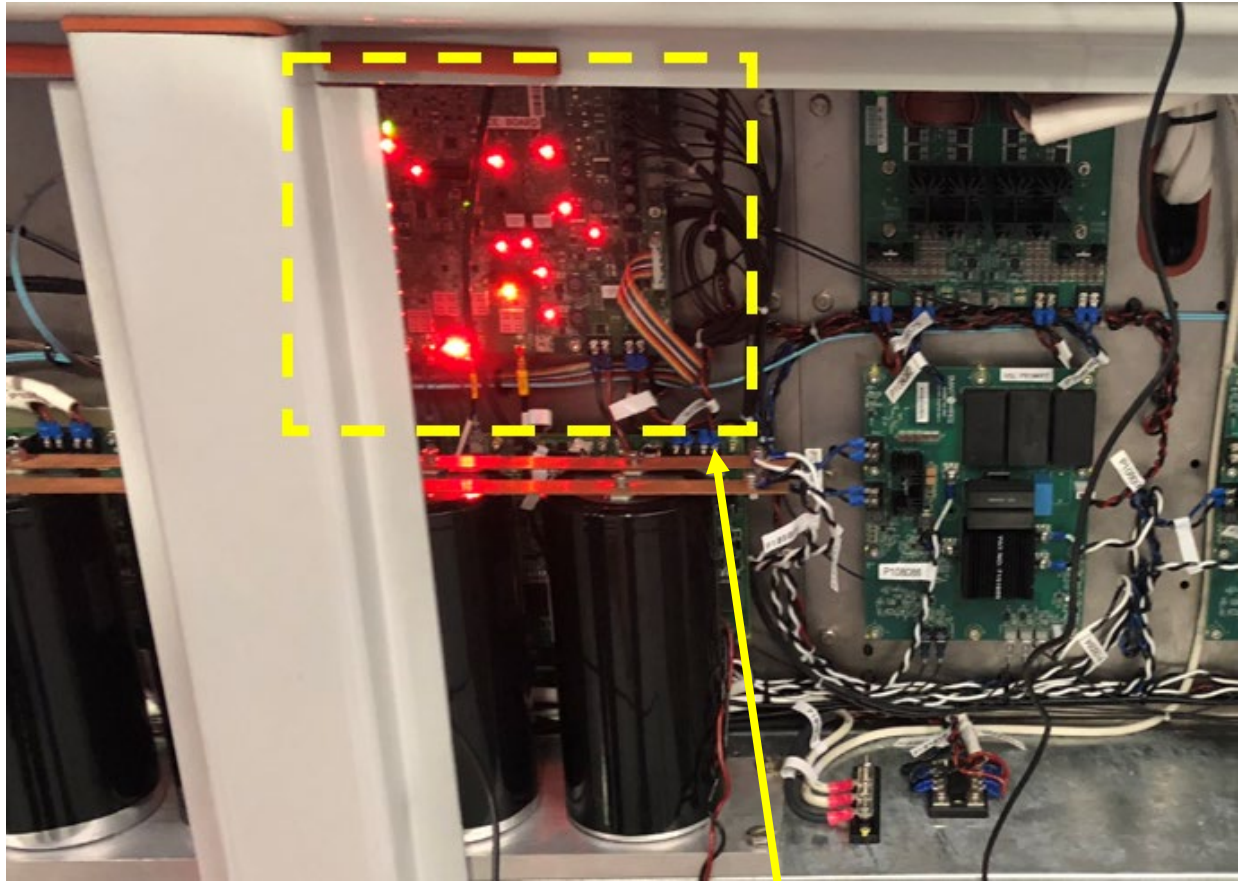
### Internal Photos



### Front View Internal-Controls

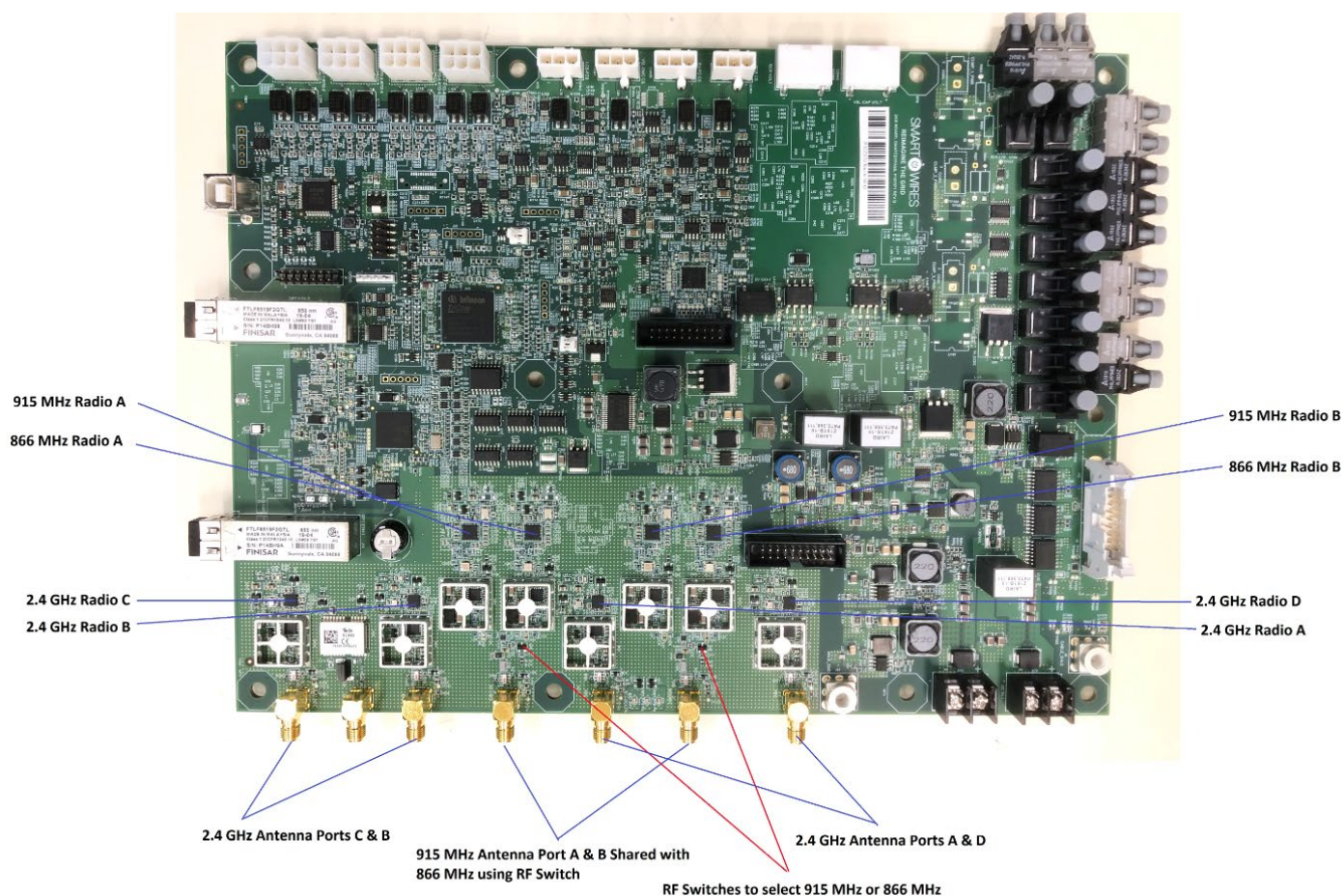


### Rear view Internal-Electro-Mechanical Components

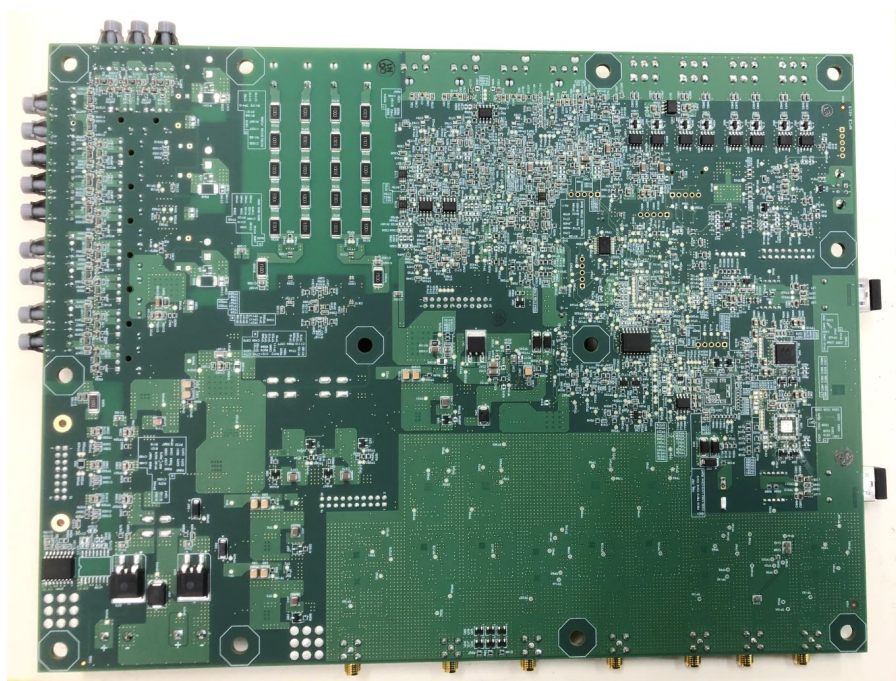


RF and control PCBA\_P107570\_installed on Smart-Bypass (description in next page)





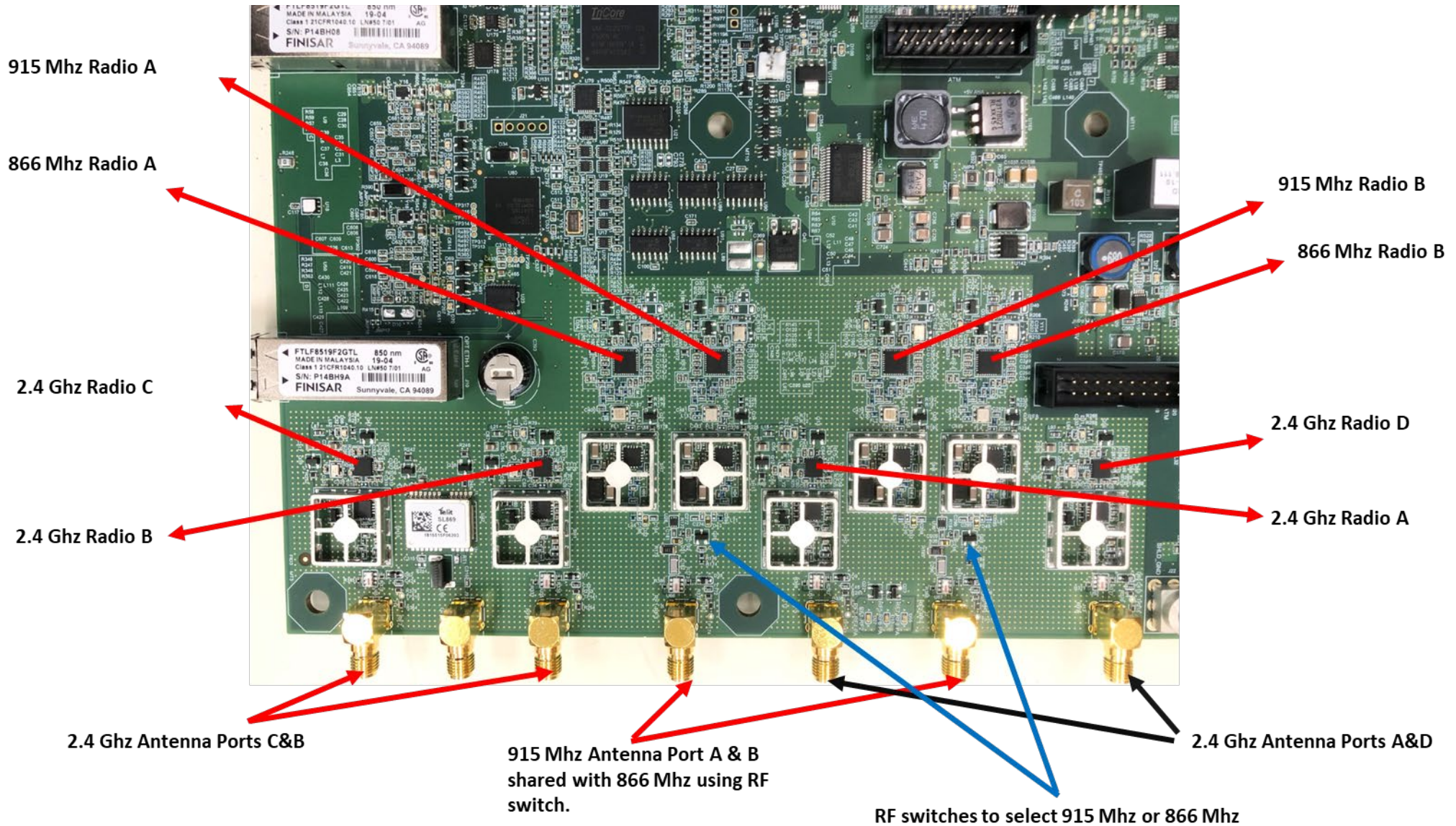
**P107570 DCE RF Layout PCBA (EMC shields removed top)**



**P107570 DCE RF PCBA (bottom view)**

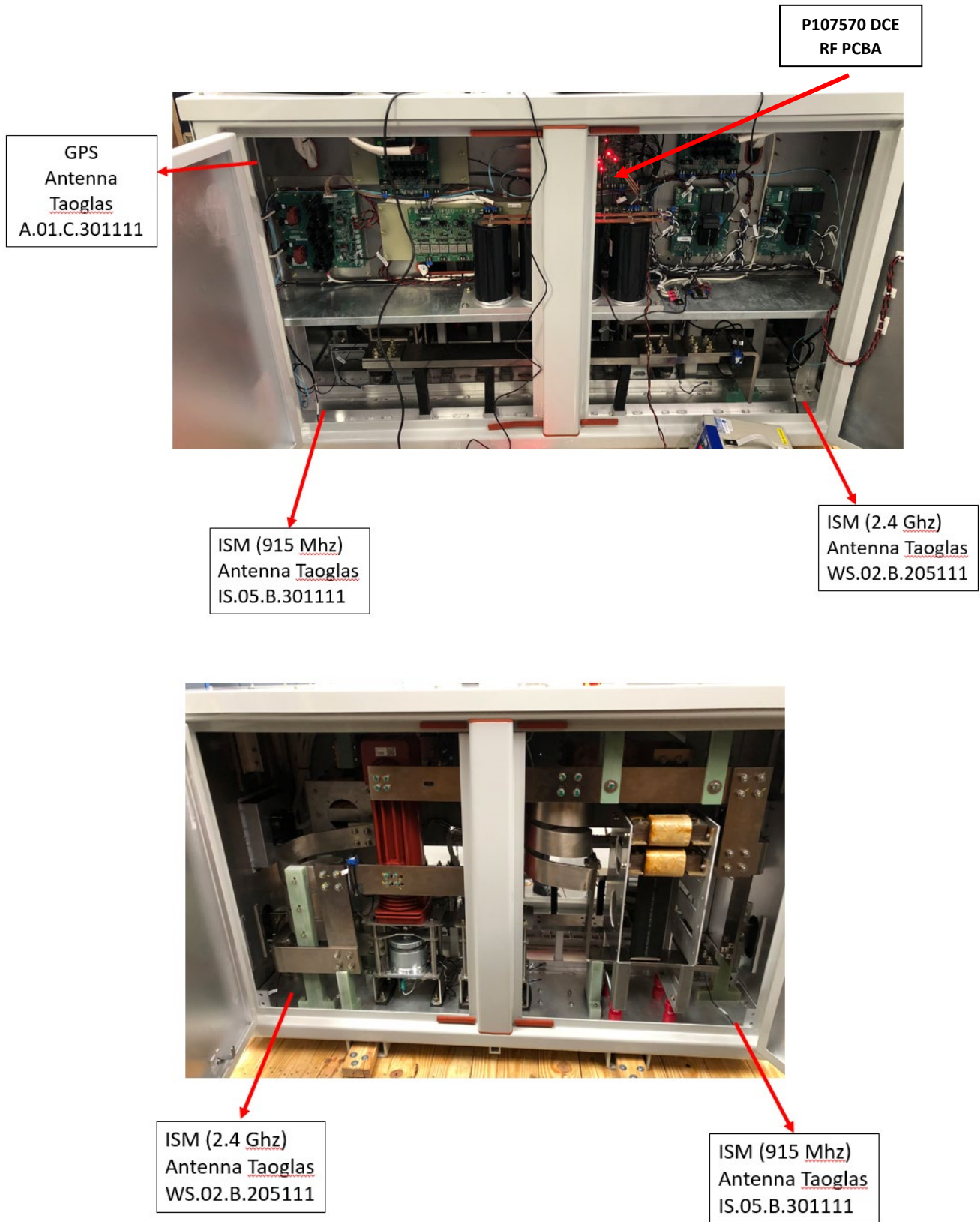


**P107570 DCE RF PCBA Radios (closeup) EMC shields removed.**



**\*. Note: 866 MHz radios are not supported in this version.**

## Antenna and RF Location



\*. Note: 866 MHz radios are not supported in this version.