

Appendix C - User's Manual

CONTENTS

■ Preparations

Features	3
Location of Controls	4
LCD Description	5
Accessories	6

■ Connection to PC

Installing Software	7
Windows ME/2000/XP	
Windows 98	
Connecting to PC with USB cable	8
Using the portable storage (Downloading / Uploading/)	9
Managing Files	
Creating New Folder	10
Renaming a Folder/File	11
Deleting Folders/Files	11
Formatting	12
Firmware Upgrade	12
Disconnecting the player	13
Manual Installation of USB Driver	14

■ Basic Usage

Listening to Music(Power On)	15
Stopping Music(Power Off)	16
Hold Function	17
Searching for Music/Encoding Files	18
Setting up Volume/Fast Forwarding/Rewinding	20
Operating the FM Radio	
Listening to FM Radio	21
Preset of a frequency	22
Listening to the stored frequency	24
FM Encoding	26
Music Encoding	28
Voice Encoding	31

CONTENTS

■ Additional Usage

Loop Function	33
Setting up Speed/EQ/Repeat Mode	34
Setting up Menu	37
Sub Menu(Setup)	38
Setup Table	39
Setting Up Sub Menu	40
REC	42
Erase	45
Format	46
Timer	47
Memory Check	48
LCD	49
Language	50

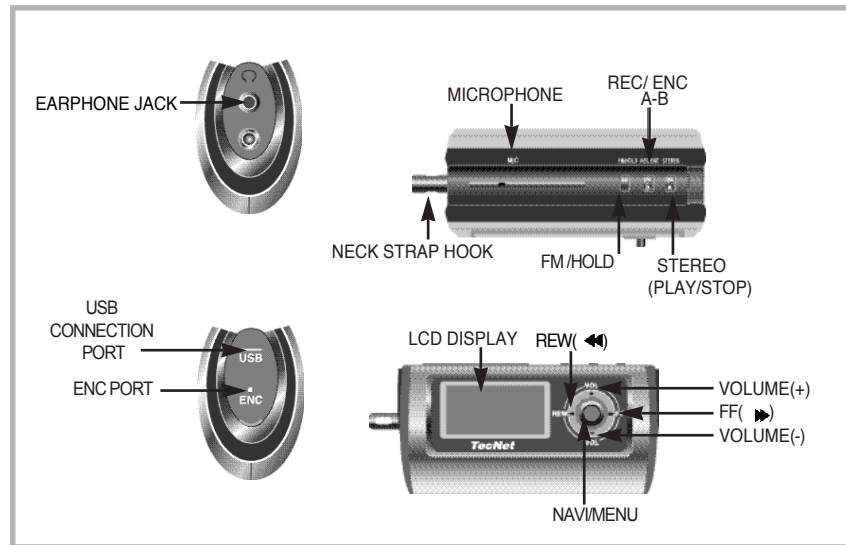
■ Additional Information

Battery Installation	51
Troubleshooting	52
Safety Precautions	53
Specification	54
FCC Certification	55
Guarantee	56

FEATURES

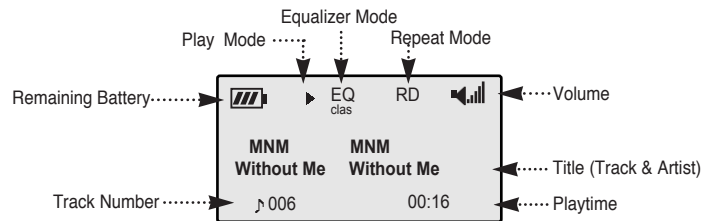
- Multi-format Support of MP3, WMA, ASF Music Files
- 512MB/256MB/128MB/64MB/32MB Internal Flash Memory
- Long Playback Time of up to 24 Hours
- Multi-language Support
- Upgradable Firmware
- Direct Encoding of Music without Connecting to a PC
- Monitoring and Adjusting the Audio Level while Encoding
- Encoding at Various Bit Rates
- FM Tuner
- Automatic Search/Storage of FM Frequencies
- Converting FM Radio Broadcasts to MP3 Files in Real Time
- 4 - Line Wide LCD Display
- Repeat Function
- Voice Recording of up to 144 Hours(512 MB)
- VOS Recording
- Storage Device of Any Data File
- Tag Display of Title and File Name, etc.
- EL Backlight
- LCD Contrast
- AGC Function (For automatic adjustment of the recording level and for normal recording of sound at a long distance)
- Easy Navigation with Graphic User Interface
- Effective 5 Equalizing Patterns (Live, Pop, Rock, Classic, U-Bass)
- Timer for Sleep Time and Recording TimePlay Mode
- Auto Sync Function (One Sync and All Sync)
- Speed Control Function for Language Study

LOCATION OF CONTROLS



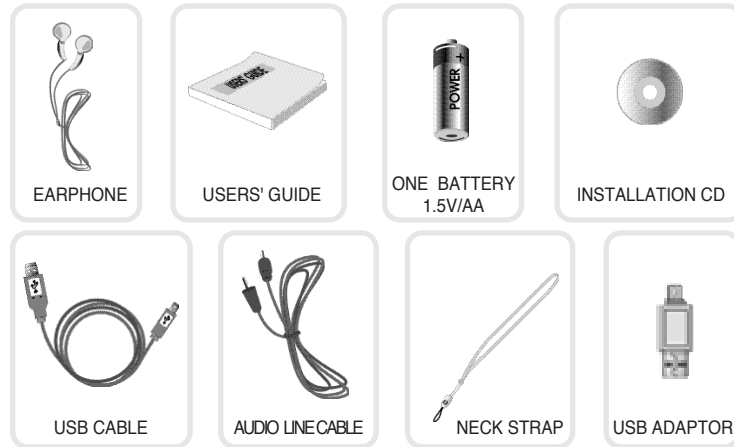
LCD DESCRIPTION

■ LCD Description



ACCESSORIES

■ Accessories



INSTALLING SOFTWARE

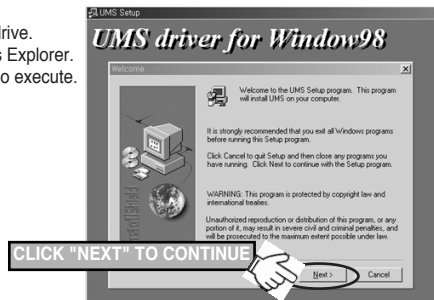
■ Installing Software

● Windows ME/2000/XP

Windows ME/2000 and XP can recognize the USB driver without installing the provided CD program. Accordingly, you may connect to PC without installing any software.

● Windows 98

1. Insert the installation CD into CD-ROM drive.
2. Click the CD-ROM driver in the Windows Explorer.
3. Select "setup.exe" file and double click to execute.
4. Click the "Next" to install the USB driver.

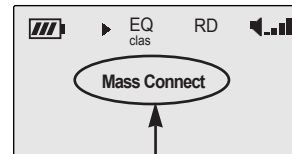
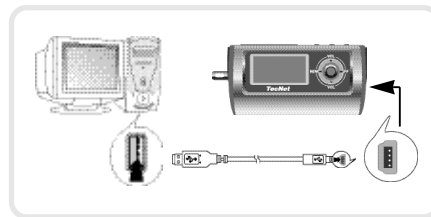


CONNECTING TO PC WITH USB CABLE

■ Connecting to PC with USB cable

1. Plug one end of the USB cable into the USB connection port on the PC.
2. Turn on the player and connect the opposite end of the USB cable to the USB connection port on the right side of the player.
3. "Mass Connect" will appear on the display.

***Note:** The player must be connected at stop mode otherwise the player may malfunction.

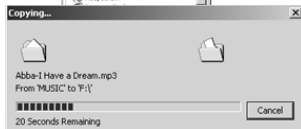
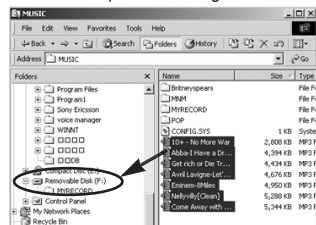
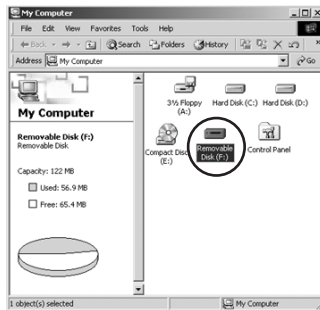


"Mass Connect" will appear on the display.

USING THE PORTABLE STORAGE

■ Downloading/Uploading files

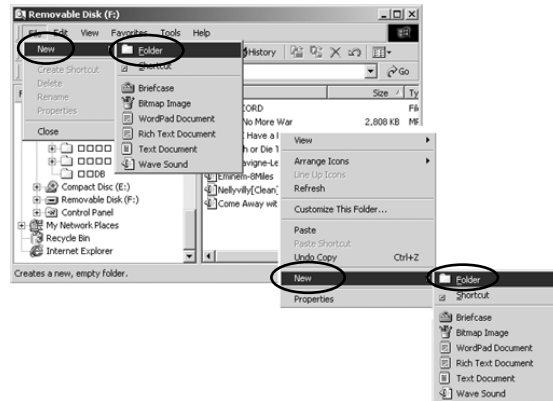
1. After connecting to PC, open Windows Explorer on PC and a removable disk icon will appear.
2. Select the files to download or upload and copy-and-paste or drag-and-drop them between the portable storage and PC.



MANAGING FILES

■ Creating New Folder

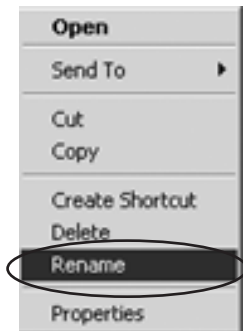
1. Select a Removable Disk in the Windows Explorer.
 2. On the file menu or pop-up menu, click [New]-[Folder]
- ※ You can create up to 256 folders in the player.



MANAGING FILES

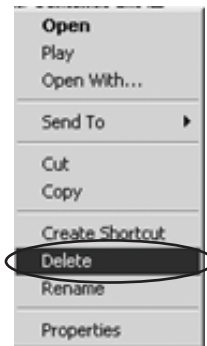
■ Renaming a Folder/File

1. Select a folder or a file you want to rename in the Windows Explorer.
2. On the file menu or pop-up menu, click [Rename].
3. Type the new name, and press Enter.



■ Deleting Folders/Files

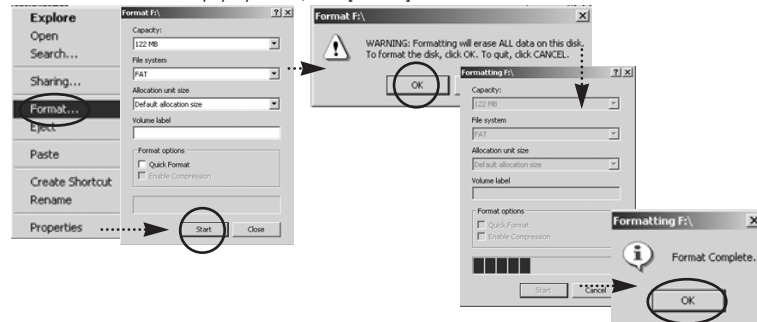
1. Select folders or files you want to delete in the Windows Explorer.
2. On the file menu or pop-up menu, click [Delete].



MANAGING FILES / FIRMWARE UPGRADE

■ Formatting

- You can initialize the memory of the player by formatting.
 - Select the removable disk in the Windows Explorer.
 - On the file menu or pop-up menu, click [Format].



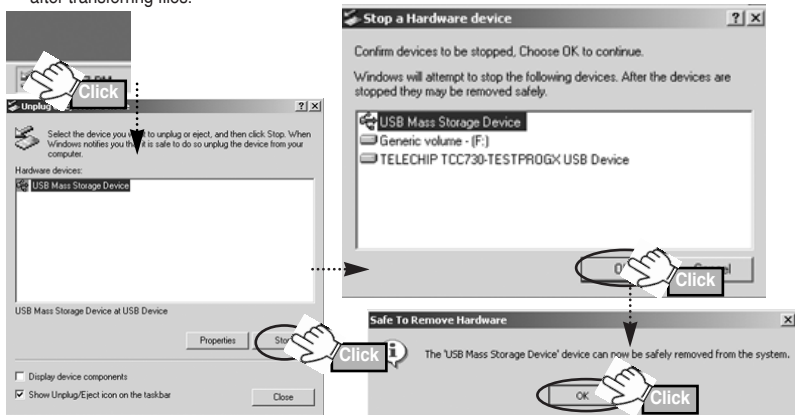
■ Firmware Upgrade

- Refer to our website www.telewininc.com for the procedure of Firmware Upgrade.

DISCONNECTING THE PLAYER

■ Disconnecting the player

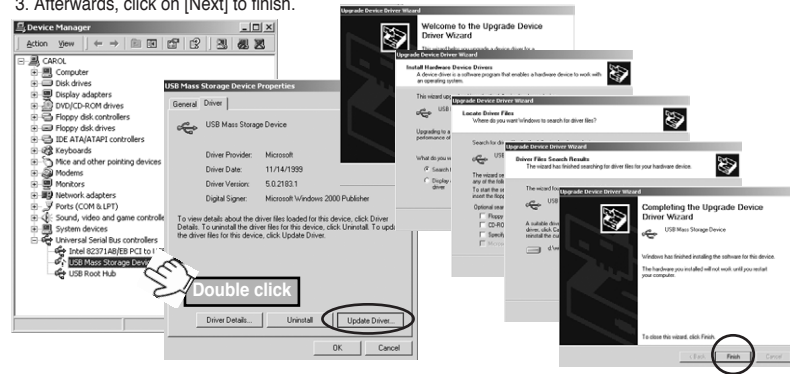
- Double-Click the green arrow in the taskbar on the bottom right of the window.
- Note : In Windows98, the green arrow doesn't appear on PC and you may disconnect after transferring files.



MANUAL INSTALLATION OF USB DRIVER

■ Manual Installation of USB Driver

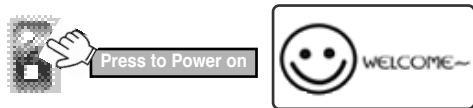
1. In Device Manager, check if there is an exclamation point or question mark in front of a device and double-click the device.
 - Windows 98/ME : Control Panel → System → Device Manager
 - Windows 2000/XP : Control Panel → System → Hardware → Device Manager
2. After Selecting the driver, click on [Update Driver].
3. Afterwards, click on [Next] to finish.



LISTENING TO MUSIC (POWER ON)

■ Listening to Music (Power On)

1. Power on : When you press the STEREO (▶/■) button for about 2 seconds, the LCD is displayed and the player is ready to start operation.



2. Playing Music : At power-on mode, press the STEREO (▶/■) button again and the music is played.



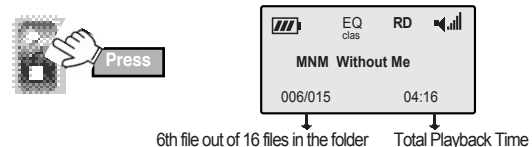
3. Pausing Music : While playing, press the FM/HOLD button to pause the music. Press FM/HOLD button again to restart.



STOPPING MUSIC (POWER OFF)

■ Stopping Music (Power Off)

1. Stopping music : While playing, press the STEREO (▶/■) button and the music stops .



2. Power off : Press the STEREO (▶/■) button for about 2 seconds and the player is turned off.
*At stop mode, if no button is pressed within 30 seconds, the player is automatically off.



HOLD FUNCTION

■ Hold Function

● At Hold mode, no button works.

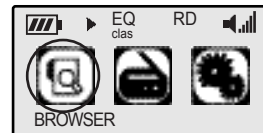
1. To set Hold mode, press the FM/HOLD button for 2 seconds during operation.
2. When a button is pressed, "HOLD" image (🔒) will appear on the display.
3. To release from Hold mode, press the FM/HOLD button for 2 seconds again.



SEARCHING FOR MUSIC/ENCODING FILES

■ Searching for Music/Encoding Files

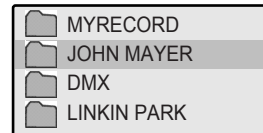
1. At stop mode, press the NAVI/MENU button.



< Menu appears on the display >

2. Select the Browser in menu and press the NAVI/MENU button.

3. After selecting the BROWSER, search music(folder) you want by moving the NAVI/MENU button toward Vol(+) or Vol (-).



SEARCHING FOR MUSIC/ENCODING FILES

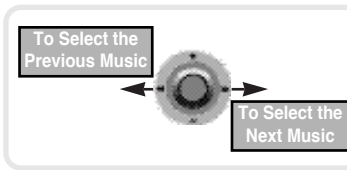
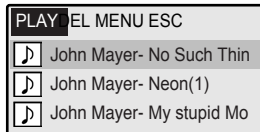
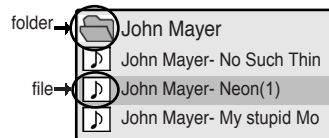
4. After finding music, press the NAVI/MENU button and PLAY DEL MENU ESC will appear on the display.

5. Select the PLAY and press the NAVI/MENU button to play music.

PLAY : Play the selected file
DEL : Delete the selected file
MENU : Move to the menu mode
ESC : Move to the previous mode

※ Simple way to search

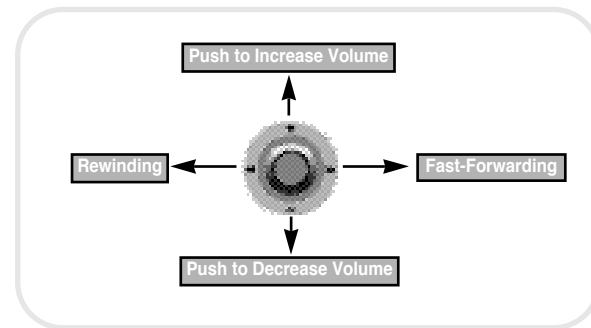
At play mode and stop mode, you can search your desired music by pushing the NAVI/MENU button toward REW(◀) or FF(▶).



SETTING UP VOLUME/FAST-FORWARDING/REWINDING

■ Setting up Volume/Fast-Forwarding/Rewinding

While listening to music, adjust the volume by pushing the NAVI/MENU button toward the Vol(+) or Vol(-) and you can make fast-forwarding and rewinding by pushing toward the REW(◀) or FF(▶).



OPERATING THE FM RADIO

■ Listening to FM Radio

- At stop mode, press the FM/HOLD button.



Manual Search for a Frequency

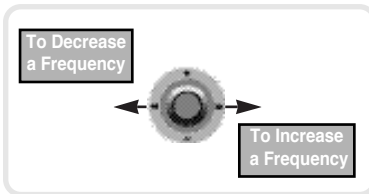
- Push the NAVI/MENU button shortly toward REW(◀) or FF(▶) then the frequency will be changed by 100 KHz.

Automatic Search for a Frequency

- Push the NAVI/MENU button a little longer toward REW(◀) or FF(▶) then the frequencies will be automatically searched.

Stopping FM Radio Mode

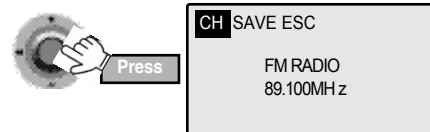
- Press FM/HOLD button or STEREO button(▶/■) to escape from FM Radio Mode.



OPERATING THE FM RADIO

■ Preset of a Frequency

1. Upon finding a frequency you want, press the NAVI/MENU button. CH SAVE ESC will appear on the display.



2. Select SAVE to store the frequency and press the NAVI/MENU button.



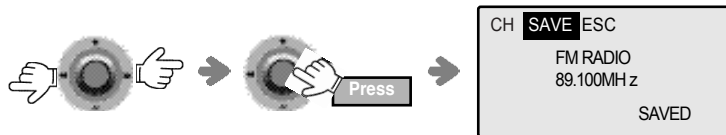
OPERATING THE FM RADIO

3. CH 1 SAVE ? No Use will appear on the display, which means the channel No.1 is not occupied.

※ When Channel is preoccupied,
CH 1 SAVE ? appears on the display.



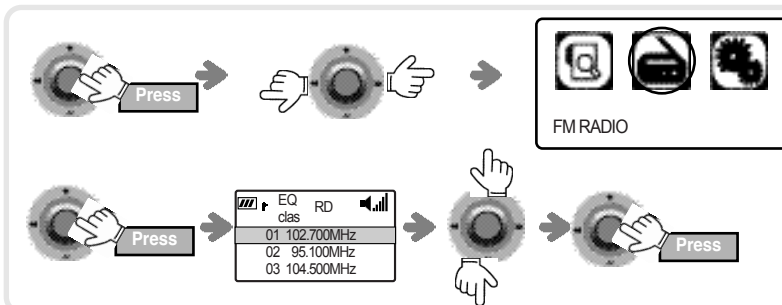
4. After selecting your desired channel No. by pushing the NAVI/MENU button shortly toward REW(◀) or FF(▶), and press the NAVI/MENU button to store the frequency. SAVED will appear on the display.



OPERATING THE FM RADIO

■ Listening to the Stored Frequency

1. At stop mode, press the NAVI/MENU button and the Main Menu will appear on the display.
2. After selecting FM RADIO by pushing the NAVI/MENU button toward FF(▶), press the NAVI/MENU button and the Stored frequencies will appear on the display.
3. Move the NAVI/MENU button toward Vol(+) or Vol(-) to select a frequency you want and press the NAVI/MENU button.

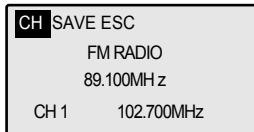


OPERATING THE FM RADIO

Simple Way to listening to the stored frequency

1. While listening to Radio, press the NAVI/MENU button and CH SAVE ESC will appear on the display.
2. After selecting CH, press the NAVI/MENU button and the stored frequencies will appear on the display.
3. After selecting the frequency you want by moving the NAVI/MENU button toward REW(◀) or FF(▶) and press the NAVI/MENU button to confirm.

※ Up to 10 channels can be memorized.

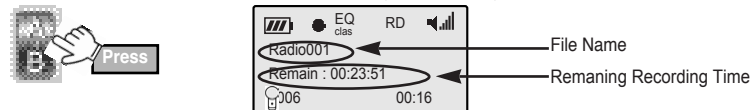


FM ENCODING

FM Encoding

Starting Encoding

Press the REC/ENC(A-B) button to start FM Encoding while listening to FM broadcast.



Pausing Encoding

While recording, press the REC/ENC(A-B) button to pause the encoding.
Press the REC/ENC(A-B) button to restart encoding.



Stopping Encoding

Press the STEREO(▶/■) button to stop FM Encoding.
In the MYRECORD folder, encoding files will be created to be MP3 file in order of Radio001, 002, 003, ...



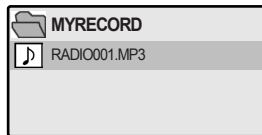
FM ENCODING

Listening to the Encoding file

- After encoding, press the STEREO (▶/■) button to escape from the Radio Mode.
At this moment, press the STEREO (▶/■) button and then the file encoded right before will play.



- Select the encoding file you want in the MYRECORD folder and play the file.



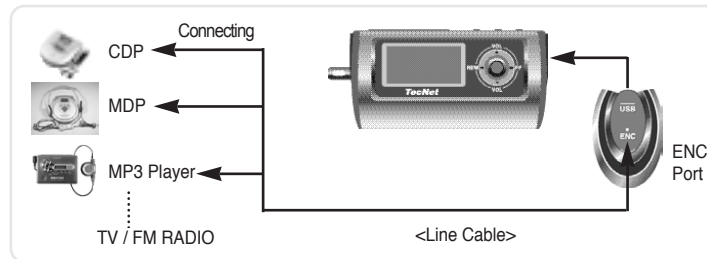
Note.

- ※ Bit Rate is fixed to 256kbps to keep the high quality sound.
- ※ Recording level can be selected among Low, Middle and High.
- ※ Volume can be adjusted while monitoring the encoding.

MUSIC ENCODING

■ Music Encoding

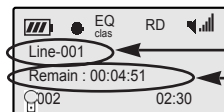
1. Connect the Audio Output port on the external audio source (CDP or MD, etc.) to the ENC Port on the player with the Line Cable.



2. Setting Up "Music Source" (Ref. p.42)
At REC mode in Set-up menu, "Music" out of music source should be selected.

MUSIC ENCODING

3. Play the external audio source and press the REC/ENC(A-B) button on the player to start music Encoding.

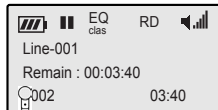


File Name

Remaining Recording Time

Pausing Encoding

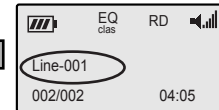
While recording, press the REC/ENC(A-B) button to pause encoding.
Press the REC/ENC(A-B) button to restart encoding.



MUSIC ENCODING

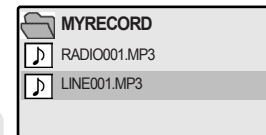
Stopping Encoding

Press the STEREO button(▶/■) to stop encoding.
In the MYRECORD folder, encoding files will be created to be MP3 file in order of Line-001, 002, 003,...



Listening to the Encoding file

- When encoding was stopped, press the STEREO(▶/■) button and then the file encoded right before will play.
(When the repeat mode is set to be Random mode, the encoded file may not play.)
- Select the encoding file you want in the MYRECORD folder and play the file.



Note.

- ※ Bit Rates can be set within the range of 8 ~ 256 kbps.
- ※ Recording level can be selected among Low, Middle and High.
- ※ Volume can be adjusted while monitoring the encoding.

VOICE ENCODING

■ Voice Encoding

Setting Up "Music Source"

At REC mode in Set-up menu, "Voice" out of music source should be selected.(Ref p.42)

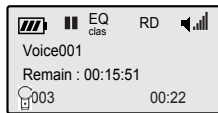
Starting Encoding

At stop mode, press the REC/ENC(A-B) button to start Voice Encoding.



Pausing Encoding

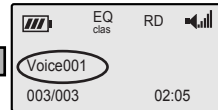
While recording, press the REC/ENC(A-B) button to pause encoding.
Press the REC/ENC(A-B) button to restart encoding.



VOICE ENCODING

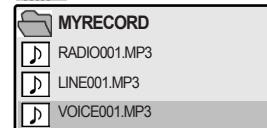
Stopping Encoding

Press the STEREO(▶/■) button to stop FM Encoding.
In the MYRECORD folder, encoding files will be created to be MP3 file in order of Voice 001, 002, 003, ...



Listening to the Encoding file

- When encoding was stopped, press the STEREO(▶/■) button and then the file encoded right before will play.
(When the repeat mode is set to be Random mode, the encoded file may not play.)
- Select the encoding file you want to listen in the MYRECORD folder and play the file.



Note.

- ※ Bit Rates can be set within the range of 8 ~ 256 kbps.
- ※ Recording level can be selected among Low, Middle and High.
- ※ Volume can be adjusted while monitoring the encoding.

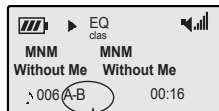
LOOP FUNCTION

■ Loop Function

1. While playing music files, press the REC/ENC(A-B) button at the beginning of the loop you want to set.
2. Press the A-B button again at the ending of the loop you want to set and the fixed section will be played repeatedly.



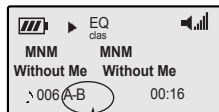
1. Press at the beginning point of the loop.



A-B blinks on the display.



2. Press again at the ending point of the loop



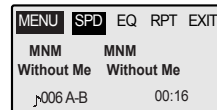
A-B appears on the display.

※ To release the loop function mode, press the REC/ENC(A-B) button again.

SETTING UP SPEED/EQ/REPEAT MODE

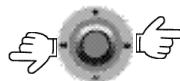
■ Setting Up Speed/EQ/Repeat Mode

1. While playing music, press the NAVI/MENU button.



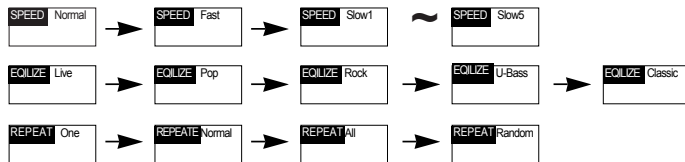
<SPD, EQ, RPT, EXIT appear on the display.>

2. Select what you want to set up among SPD, EQ, RPT, EXIT by pushing the NAVI/MENU button toward the REW (◀) or FF (▶) and press the NAVI/MENU button to set up.



SETTING UP SPEED/EQ/REPEAT MODE

3. Push the NAVI/MENU button toward REW(◀) or FF(▶) to select the mode you want and press the NAVI/MENU button.



SETTING UP SPEED/EQ/REPEAT MODE

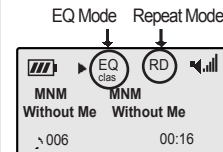
SPD : To control the playback speed
(Fast, Normal, Slow 1~ Slow 5)

EQ : To set up the EQ mode you want
(Live, Pop, Rock, U-Bass, Classic)

RPT : To set up repeat mode

- One : Play one track [1]
- Normal : Play all tracks in the folder and stop [All]
- All : Play all tracks in the folder repeatedly [ALL]
- Random : Play randomly all tracks in the folder and stop [RD]

EXIT : To move to previous mode



SETTING UP MAIN MENU

■ Setting Up Main Menu

At stop mode, press the NAVI/MENU button and the menu will appear on the display.



< Menu appears on the display >

1. Browser : To Manage (Search/Play/Delete) the MP3, WMA, ASF and Encoding files.
2. FM Radio : To search and listen to the stored frequencies
3. Setup : To set up Record/Erase/Timer/Memory Check/LCD/Language
4. USB Connect : To connect the player to upgrade firmware
5. Exit : To move to the previous mode

- ※ Press the REC / ENC (A-B) button to escape from the menu mode and move to the initial mode.
- ※ Press the STEREO button (▶/■) to move to the previous mode.

SUB MENU (SETUP)

■ Sub Menu (Setup)

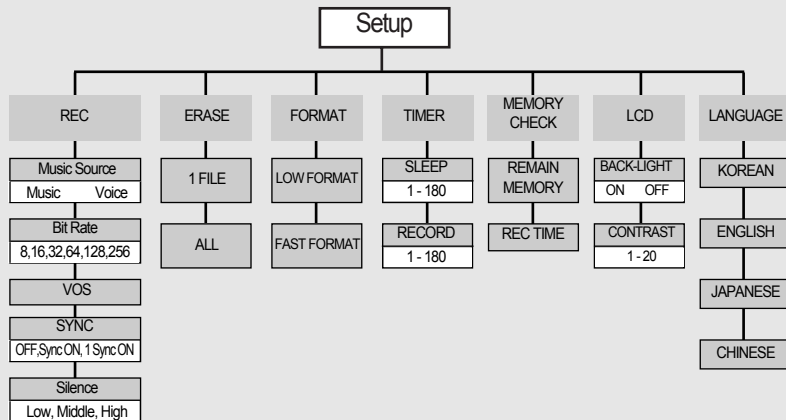
In Menu, select Setup and sub menu will appear on the display. (Refer to “Setting up Menu”)



- | | |
|----------------|---|
| 1.REC | : To set up options for encoding music, voice and FM broadcast |
| 2.ERASE | : To delete a file or all files for a folder |
| 3.FORMAT | : To format the built-in flash memory and all files will be deleted |
| 4.TIMER | : To preengage time to stop music/recording |
| 5.MEMORY CHECK | : To check remaining memory, recording time and entire memory |
| 6.LCD | : To adjust EL Backlight and LCD contrast |
| 7.LANGUAGE | : To select language that you want to use |
| 8.BACK | : To move to the previous menu |

SETUP TABLE

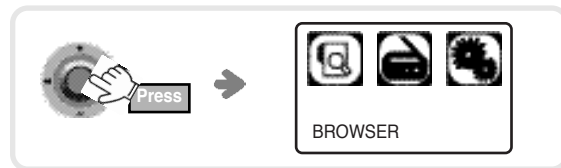
■ Setup Table



SETTING UP SUB MENU

■ Setting Up Sub Menu

1. At stop mode, press the NAVI/MENU button and the menu will appear on the display.

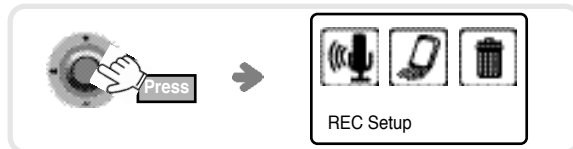


2. Push the NAVI/MENU button toward REW(◀) or FF(▶) to select the menu you want.



SETTING UP SUB MENU

3. After selecting the menu, press the NAVI/MENU button again to enter into the sub menu.



4. In sub menu, select the menu you want to set up by pushing the NAVI/MENU button toward REW(◀) or FF(▶).



5. After selecting, press the NAVI/MENU button.



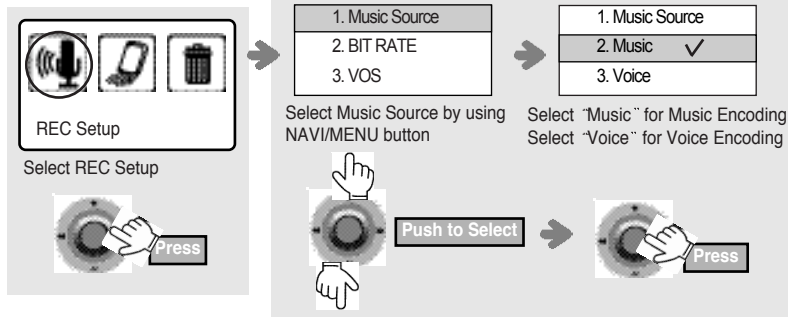
REC

■ REC

- To set up options for encoding music, voice and FM broadcast.
In sub menu, select REC by pushing the NAVI/MENU button toward REW(◀) or FF(▶) and press the NAVI/MENU button. (Ref. p.40)

Music Source

In REC, select Music Source by pushing the NAVI/MENU button toward Vol(+) or Vol(-) and press the NAVI/MENU button.



Bit Rate

To set the bit rate for Music Encoding and Voice Encoding (Ref. p.42 "Music Source") (8kbps, 16kbps, 32kbps, 64kbps, 128 kbps, 256kbps)

* For FM Encoding, the bit rate is fixed to be 256kbps to keep high quality sound.

* Higher bit rate guarantees high quality of recording sound but the recording time is less.

1. Music Source	2. BIT RATE
2. BIT RATE	8 Kbps ✓
3. VOS	16 Kbps

VOS

When voice or sound exists, voice recording is activated. (Ref. p.42 "Music Source")

When the music source is set to voice mode, VOS function will be available.

1. Music Source	3. VOS
2. BIT RATE	OFF ✓
3. VOS	ON

Sync

- Sync On : Automatically creates a file for each track (Ref. p.42 "Music Source")
- 1 Sync On : Automatically creates a file for one track and music encoding is finished.
- Off : All Songs are recorded in a single file.

* When the Music Source is set to Music mode, Sync function will be available.

4. Sync	4. Sync
5. Silence	OFF ✓
6. Back	Sync On

Silence

(Ref. p.42 "Music Source")

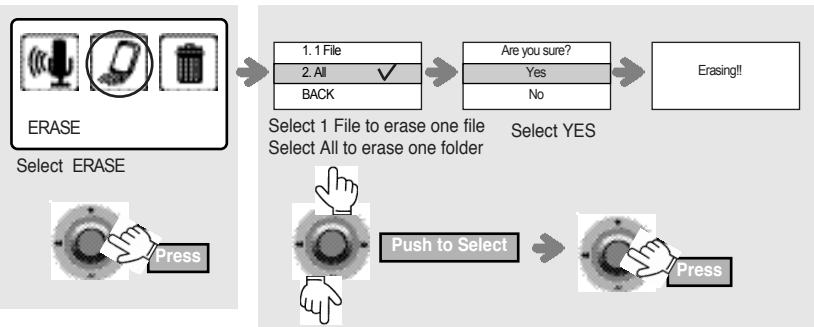
When recording at REC mode, you can adjust the recording level by selecting Low/Middle/High.

4. Sync	5. Silence
5. Silence	Low ✓
6. Back	Middle

ERASE

■ Erase

- Select a file/folder you want to erase.
- In sub menu, select ERASE by pushing the NAVI/MENU button toward REW(◀) or FF(▶) and press the NAVI/MENU button.



FORMAT

■ Format

- In sub menu, select Format by pushing the NAVI/MENU button toward REW(◀) or FF(▶) and press the NAVI/MENU button.
- Initialize the memory of the player.

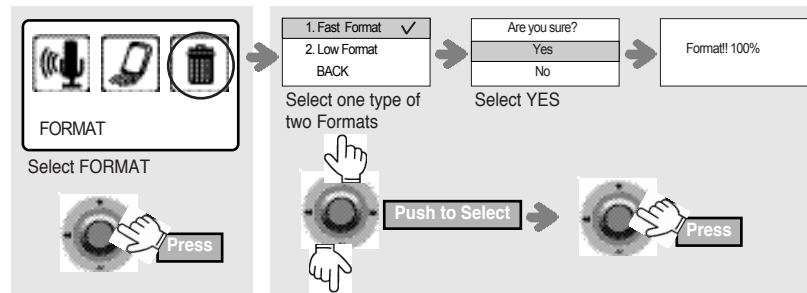
Low Format : Format the memory in high quality

Fast Format : Format the memory in normal quality

*NOTE: All files will be deleted and the deleted files can not be recovered.

The low format may take longer than the fast format.

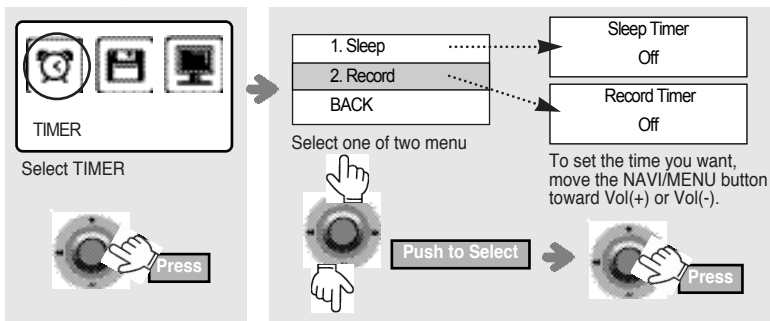
Format function can be executed on PC by right-click on the mouse.



TIMER

■ Timer

- In sub menu, select Format by pushing the NAVI/MENU button toward REW(◀) or FF(▶) and press the NAVI/MENU button.
- Sleep :
After the fixed time, the player stops playing and is turned off.
- Record :
After the fixed time, the player stops recording and is turned off.

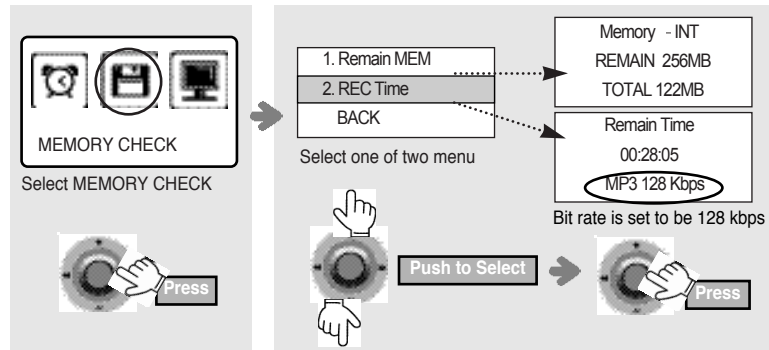


※ The setting range of the timer is 1 to 180 minutes.

MEMORY CHECK

■ Memory Check

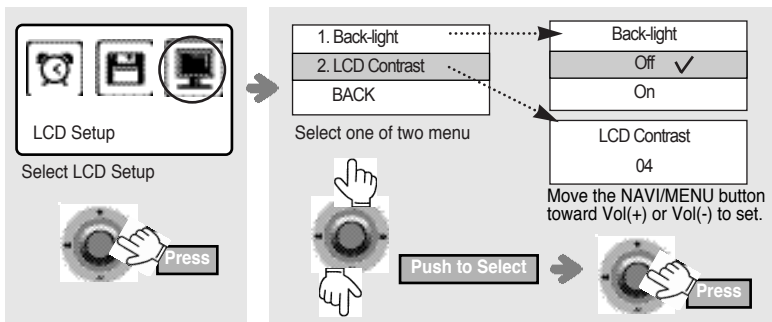
- In sub menu, select Memory Check by pushing the NAVI/MENU button toward REW (◀) or FF(▶) and press the NAVI/MENU button.
- Remain Memory :
Display remaining memory and entire memory.
- Rec Time:
Display remaining recording time.



LCD SETUP

■ LCD SETUP

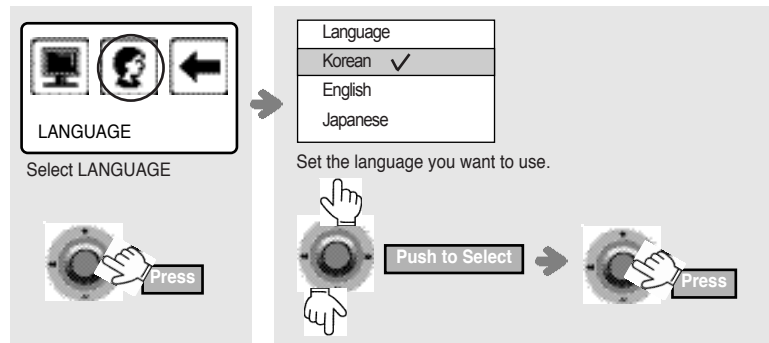
- In sub menu, select LCD Setup by pushing the NAVI/MENU button toward REW(◀) or FF(▶) and press the NAVI/MENU button.
- Backlight
 - On : Backlight illuminates for 7 seconds.
 - Off : Backlight doesn't illuminate.
- Contrast
 - You can adjust the brightness of the screen.
 - The setting range of the contrast is 0 to 20.



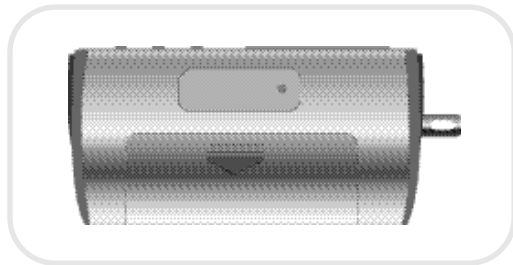
LANGUAGE

■ Language

- In sub menu, select Language by pushing the NAVI/MENU button toward REW(◀) or FF(▶) and press the NAVI/MENU button.



BATTERY INSTALLATION



Be sure to replace battery at stop mode.

1. Open the battery cover.

Press and slide the battery cover off.

2. Install one(1) 1.5V AA size battery and slide the cover back into place.

TROUBLE SHOOTING

In case of no LCD Display	<ul style="list-style-type: none">● Check the battery capacity.● Check whether the battery has been inserted to the right poles(+, -).
In case of no sound from earphone	<ul style="list-style-type: none">● Check to see if volume is set to "0".● Connect the earphone plug firmly.● Check your files on the PC to see if they are corrupted.
In case of having problem on FM reception	<ul style="list-style-type: none">● Make adjustment on the position of the player and earphone.● Turn off the power of other electric devices nearby the player.● Earphone functions as the antenna.
In case of no working of buttons	<ul style="list-style-type: none">● Check the setting of Hold function. (The Hold function should be on Off mode.)
In case of having problem on file download	<ul style="list-style-type: none">● Check whether the driver is installed correctly in the PC.● Check the connection between the player and PC.● Check whether the player is turned on.● Check whether the memory of the player is full.

SAFETY PRECAUTIONS

- Dropping and other shock or pressure to the cabinet can cause damage.
- Pressure to the LCD may cause permanent damage to the performance of the LCD.
- Always avoid high heat from any source. Leaving the unit in direct sunlight or in a hot car(as in Summer) can cause damage.
- Keep the unit clear from dust and contamination that cause damage.
- High humidity, dampness or liquid spills should be avoided.
- Do not attempt to repair, disassemble or modify this unit.
- Do not use in aircraft during take-off or landing.
- The seller holds no liability for any damage caused by accident or misuse of this product or for any claims by a third party.
- Do not use the earphones while driving or cycling.
- Avoid using the earphones at high level volume to protect your ears.
- Doctors want against continuous exposure to high volume.
- Reduce the volume if you experience ringing in your ears.

SPECIFICATION

Category		Specification
Playback Time		Up To 24 Hours
Built-In Memory Capacity	TW-2032ME	32 MB
	TW-2064ME	64 MB
	TW-2128ME	128 MB
	TW-2256ME	256 MB
	TW-2512ME	512 MB
Battery		1.5V AA X 1 (Alkaline or Rechargeable)
File Support		MPEG 1/2/2.5 Layer 3, WMA, ASF
Audio Frequency Range		20 Hz ~ 20 KHz
FM Frequency Range		87.5MHz ~ 108 MHz
Max. Recording Time	TW-2032ME	9 Hours (8 Kbps)
	TW-2064ME	18 Hours (8 Kbps)
	TW-2128ME	36 Hours (8 Kbps)
	TW-2256ME	72 Hours(8Kbps)
	TW-2512ME	144 Hours (8 Kbps)
Bit Rate		8, 16, 32, 64,128, 256 Kbps
Tag		ID3 V1 V2 V3
OS System		MS Windows 98/ME/2000/XP

FCC CERTIFICATION

THIS DEVICE COMPLIES WITH PART 15 OF THE FCC RULES. OPERATION IS SUBJECT TO THE FOLLOWING TWO CONDITIONS: (1) THIS DEVICES MAY NOT CAUSE HARMFUL INTERFERENCE, AND (2) THIS DEVICE MUST ACCEPT ANY INTERFERENCE, RECEIVED, INCLUDING INTERFERENCE THAT MAY CAUSE UNDESIRED OPERATION.

This equipment has been tested and found to comply with the limits for a Class B digital device, pursuant to part 15 of the FCC Rules. These limits are designed to provide reasonable protection against harmful interference in a residential installation.

This equipment generates, uses and can radiate radio frequency energy and, if not installed and used in accordance with the instructions, may cause harmful interference to radio communications. However, there is no guarantee that interference will not occur in a particular installation. If this equipment does cause harmful interference to radio or television reception, which can be determined by turning the equipment off and on, the user is encouraged to try to correct the interference by one or more of the following measures :

- Reorient or relocate the receiving antenna.
- Increase the separation between the equipment and receiver.
- Connect the equipment into an outlet on a circuit different from that to which the receiver is connected.
- Consult the dealer or an experienced radio/TV technician for help.

NOTE:

THE MANUFACTURER IS NOT RESPONSIBLE FOR ANY RADIO OR TV INTERFERENCE CAUSED BY UNAUTHORIZED MODIFICATIONS TO THIS EQUIPMENT. SUCH MODIFICATIONS COULD VOID THE USER'S AUTHORITY TO OPERATE THE EQUIPMENT.

GUARANTEE

PRODUCT	DIGITAL AUDIO PLAYER	MODEL	TW-2032ME/TW-2064ME/TW-2128ME/ TW-2256ME/TW-2512ME
		SALES DATE	
CUSTOMER	ADDRESS NAME	TEL SINCERELY	
SALES AGENCY	ADDRESS AGENCY NAME	TEL SIGN	