



4SYNC LIGHT SYSTEM

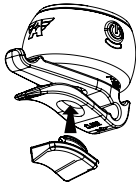
Arsenal Cycling synchronized flashing bike lights make you more visible on the road to today's distracted drivers. The same visual pattern that makes a radio tower mover visible to pilots from a distance has been adapted for cyclists.

Change the mode on one light and they all change and synchronize to that new flash rate. Turn one light off and they all turn off.

ARSENALCYCLING.COM

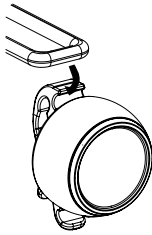
HOW TO MOUNT

- There are three styles of rubber pads for mounting the lights to the bike plus an adjustable strap for mounting a light to a your helmet.



- Handlebar pad for straight mounting.
- Seat Post pad to angle the light horizontally.
- Seat Stay pad to mount low on the seat stay of the bike.

- Mount the Rubber band to the outside groove on the clip.
- Pull the band around the handlebar, seat post or seat stay and hook into the opposite end of the clip. Make sure to mount it very securely.



WHERE TO MOUNT

Because the 4Sync light creates a pattern that is recognizable, we highly advise that you create as much distance between the lights as possible. We recommend:



- Mount one taillight on the helmet.
- Low on your back, under-seat bag or seat post
- Low on the seat stay.

PRODUCT SPEC

Dimension: (W) 38.9 x (H) 40.6 (mm)

Weight: 33g

Light Source: COB LED x 16

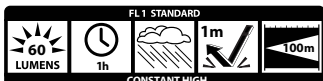
Battery: Li-polymer rechargeable battery

Recharge Time: Approx 2hrs (USB 2.0)

Run Time:	Mode	Single Light	Sync'd Lights
	Constant High	1 hour	1 hour
	Hyper-Flash	12 hours	5 hours
	Sync Strobe	20 hours	9 hours
	Group Pulse	20 hours	7 hours

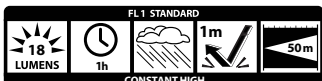
FL1 STANDARD

White Light



FL 1 STANDARD	CONSTANT HIGH	SYNC STROBE
	60 LUMENS	3 LUMENS
	1h	9h
	10m	5m
	34 cd	4 cd

Red Light



FL 1 STANDARD	CONSTANT HIGH	SYNC STROBE
	18 LUMENS	1 LUMENS
	1h	9h
	10m	4m
	9 cd	1.8 cd



Warning:

Changes or modifications not expressly approved by the party responsible for compliance could void the user's authority to operate the equipment.

NOTE: This equipment has been tested and found to comply with the limits for a Class B digital device, pursuant to part 15 of the FCC Rules. These limits are designed to provide reasonable protection against harmful interference in a residential installation. This equipment generates, uses and can radiate radio frequency energy and, if not installed and used in accordance with the instructions, may cause harmful interference to radio communications. However, there is no guarantee that interference will not occur in a particular installation. If this equipment does cause harmful interference to radio or television reception, which can be determined by turning the equipment off and on, the user is encouraged to try to correct the interference by one or more of the following measures:

- Reorient or relocate the receiving antenna.
- Increase the separation between the equipment and receiver.
- Connect the equipment into an outlet on a circuit different from that to which the receiver is connected.
- Consult the dealer or an experienced radio/TV technician for help.

This device complies with Part 15 of the FCC Rules. Operation is subject to the following two conditions: (1) this device may not cause harmful interference, and (2) this device must accept any interference received, including interference that may cause undesired operation.

FCC Radiation Exposure Statement:

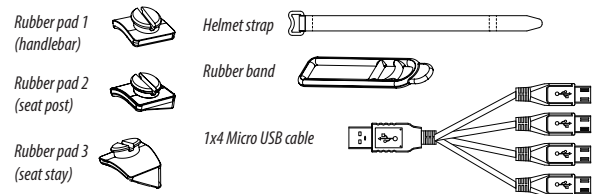
This equipment complies with FCC radiation exposure limit set forth for an uncontrolled environment. This equipment should be installed and operated with minimum distance 20 cm between the radiator & your body.

4SYNC LIGHT SYSTEM

FCC ID: QOZ-4SYNC100



Thank you for choosing the Arsenal Cycling 4Sync Light - The only wirelessly networked bicycle light that synchronizes flashing patterns between multiple lights to make cyclists more visible to motorists on the road.

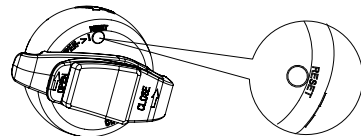


Please review this manual for use.
www.arsenalcycling.com
service@arsenalcycling.com

HOW TO USE

1. On initial set up, begin by pressing the reset button on each unit.
2. Long Push the On/Off Mode-button to turn each light on.
3. Single Push On/Off/Mode to change modes.
4. Double Click the button to add the light to the network (More details in "How to pair").
5. A light can be removed from the network by Double Clicking On/Off/Mode button. Double click to add back.
6. Push Hold to turn light off.

HOW TO RESET



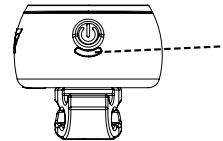
Press the Reset button on the back erase the network pairing code and reset for pairing.

HOW TO PAIR

1. All lights must be within the 10 meter range to pair. All lights must be paired within 30 seconds. After that lights must be reset to pair again.
2. With each light turned on, double click the Mode button on each light within 30 seconds.
3. Orange indicator flashes rapidly when a light is in pairing and off when paired.
4. Once the lights are paired, pressing the Mode button on any light should change all the lights in the group.
5. If the lights are not paired properly, press the Reset button on all the units to begin pairing again.

6. The pairing is locked in memory even when switched off and recharged. Pairing Memory will be erased if lights are left with a dead battery for approximately 2 weeks.
7. If lights are switched off for more than an hour, each light needs to be switched on individually. The group pairing will remain.

LED INDICATOR IN SEARCH



- Turns rapid flashing orange when in searching.
- Turns slow flashing orange for host, and turns off for slaves when in pairing mode

HOW TO UNPAIR

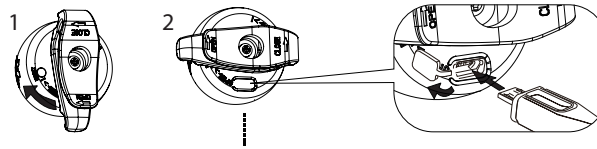
1. With the light on, double clicking the Mode Button. The light is now in single operation . The light can be added back to the group with another double click.
2. Orange indicator remains lit for 3 seconds following the double click to unpair the unit.

AUTOMATIC BATTERY SAVING MODE

When the battery is low and light is in Constant High Mode, it will force to SYNC Flashing Mode to save battery life. All the lights in the group will switch to SYNC Flashing Mode. (Approximate remaining battery life on SYNC Flashing is 1 hr and 30 mins.)

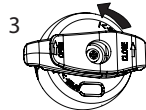
HOW TO CHARGE

Please follow the steps below to charge the unit.



Turn clock-wise to expose USB port.

Open the USB cover and insert the USB cable (the indicator turns Red when the unit is charging).



After charging, close the USB port and turn Clip counter clock-wise to cover the USB rubber cap and increase water resistance.

LED INDICATOR FOR BATTERY LIFE

- Flashing Red during operation when battery is low.
- Red flashes 3 times when switched on indicates battery is low and needs to be recharged.
- Constant Red when is being charged.
- Led indicator turns Off when fully charged.