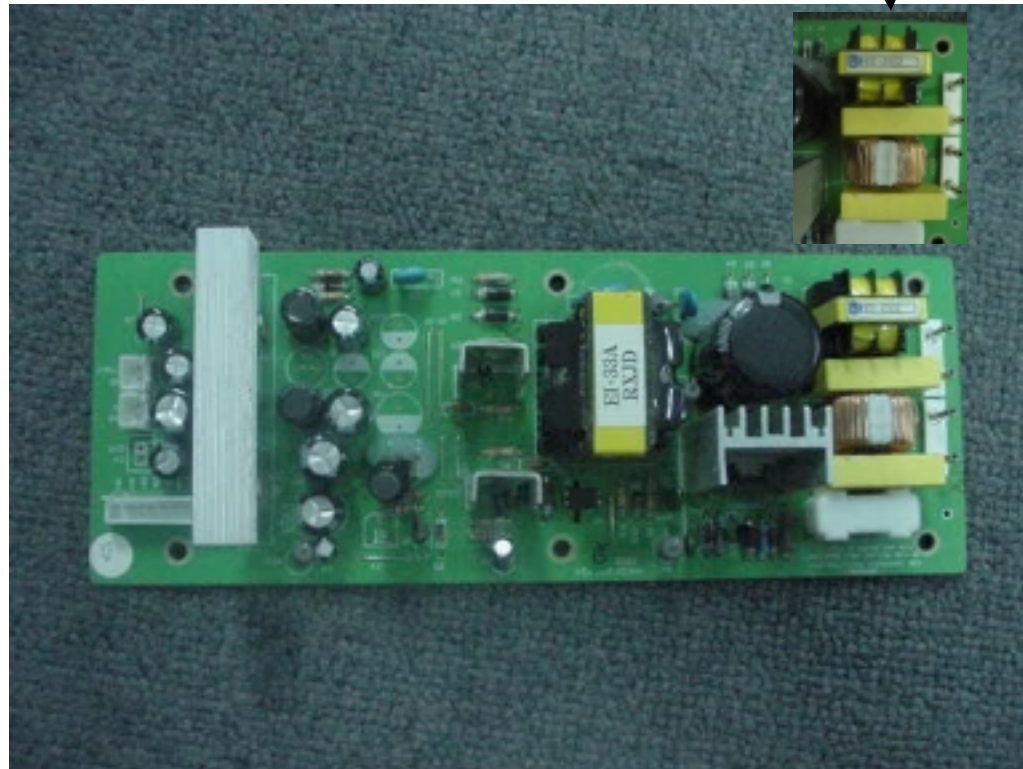


**Internal Picture of Digital Satellite Receiver**

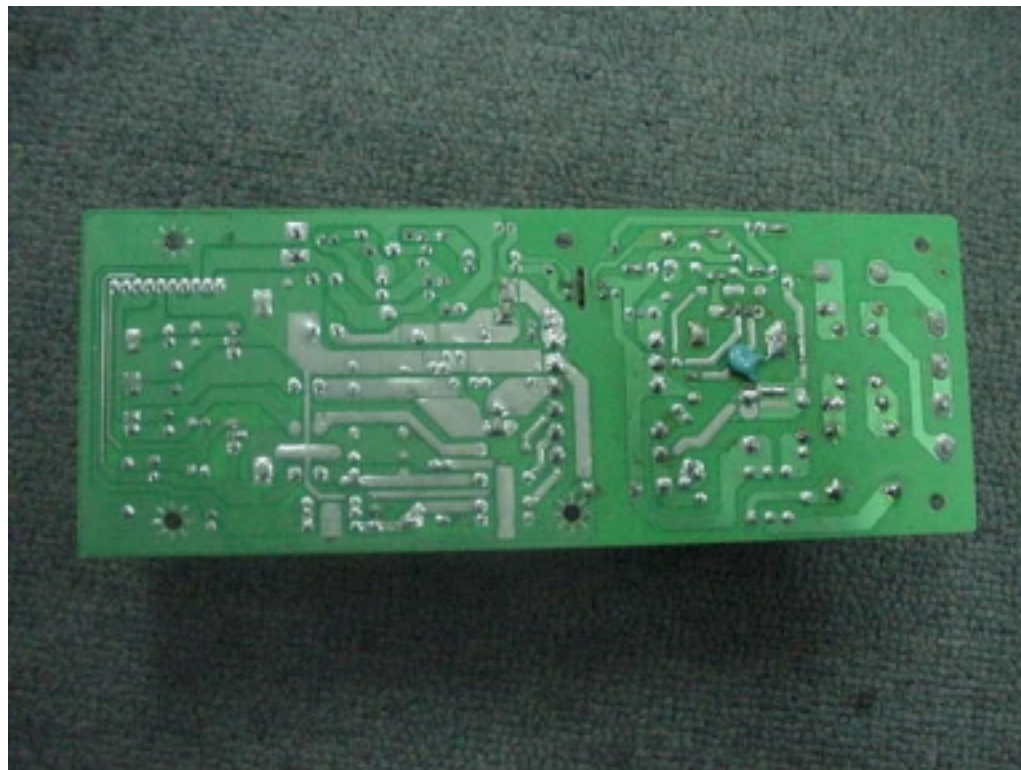


**Cover Removed**

Power board – component side

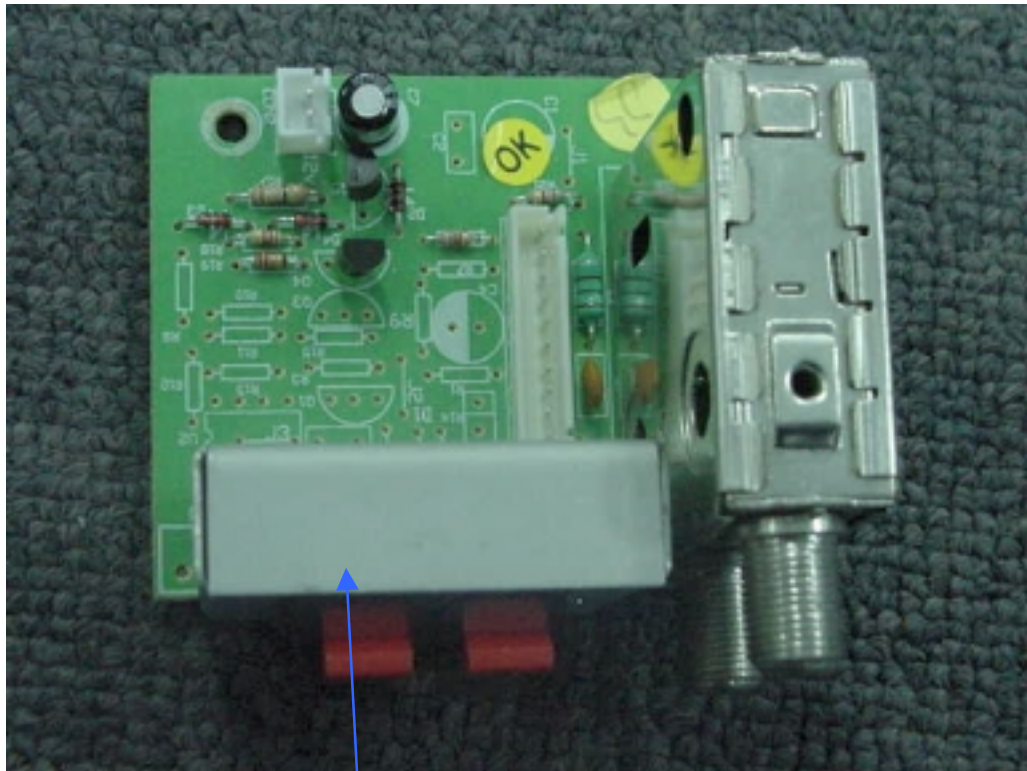


Power board – soldering side

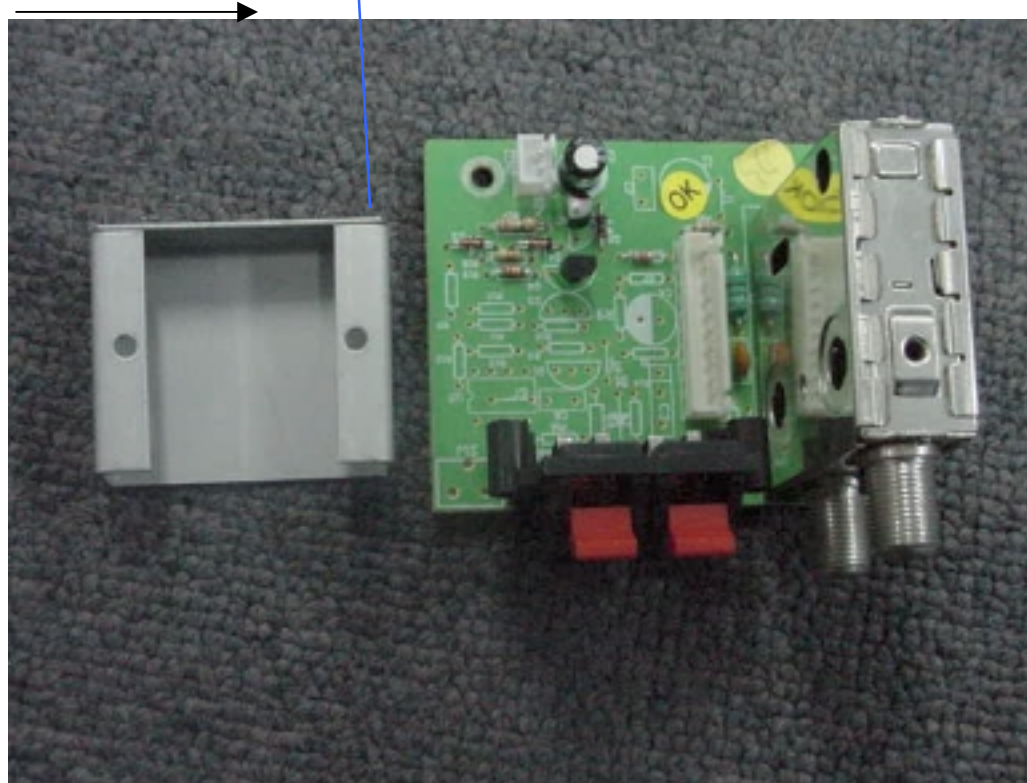




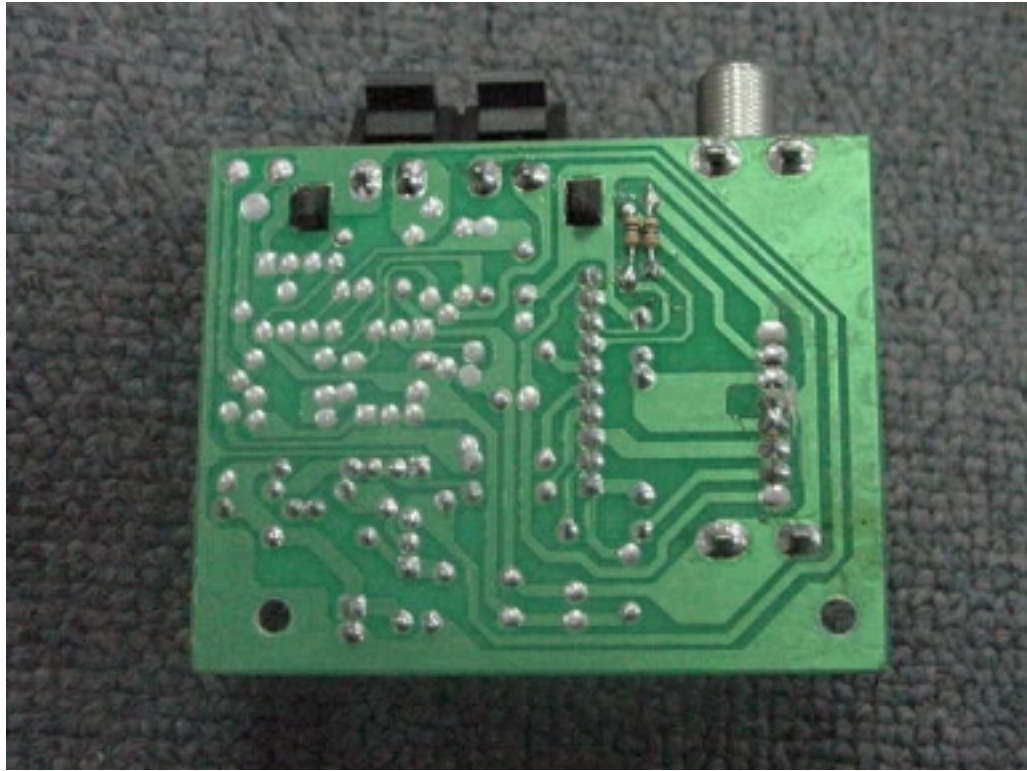
RF Output Module – Component side



Shielded enclosure for EMI suppression



RF Output Module – Soldering side





**Main board – Component side**



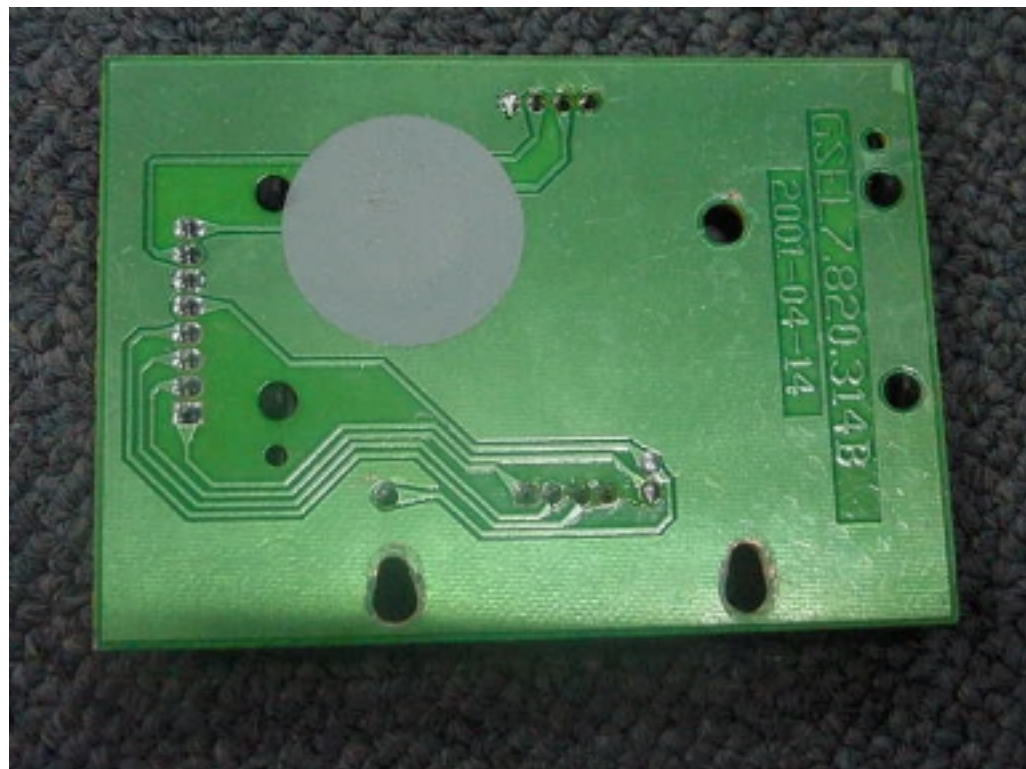
**Main board – Soldering side**



**SMART Card connector – Component side**

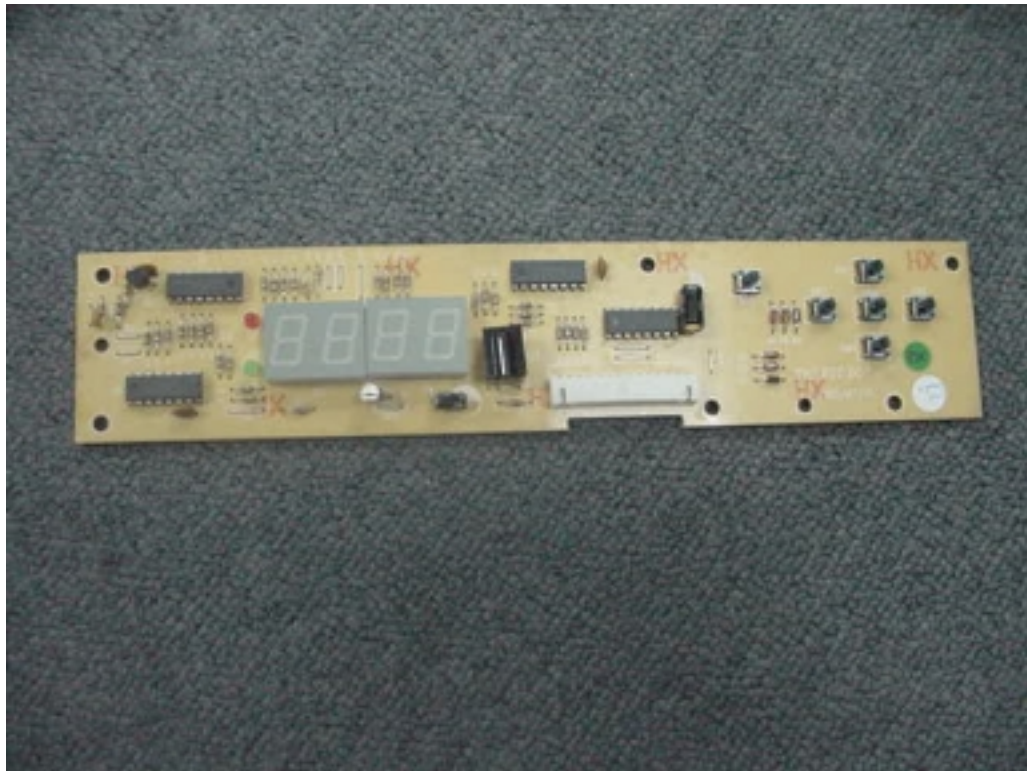


**SMART Card connector – Soldering side**

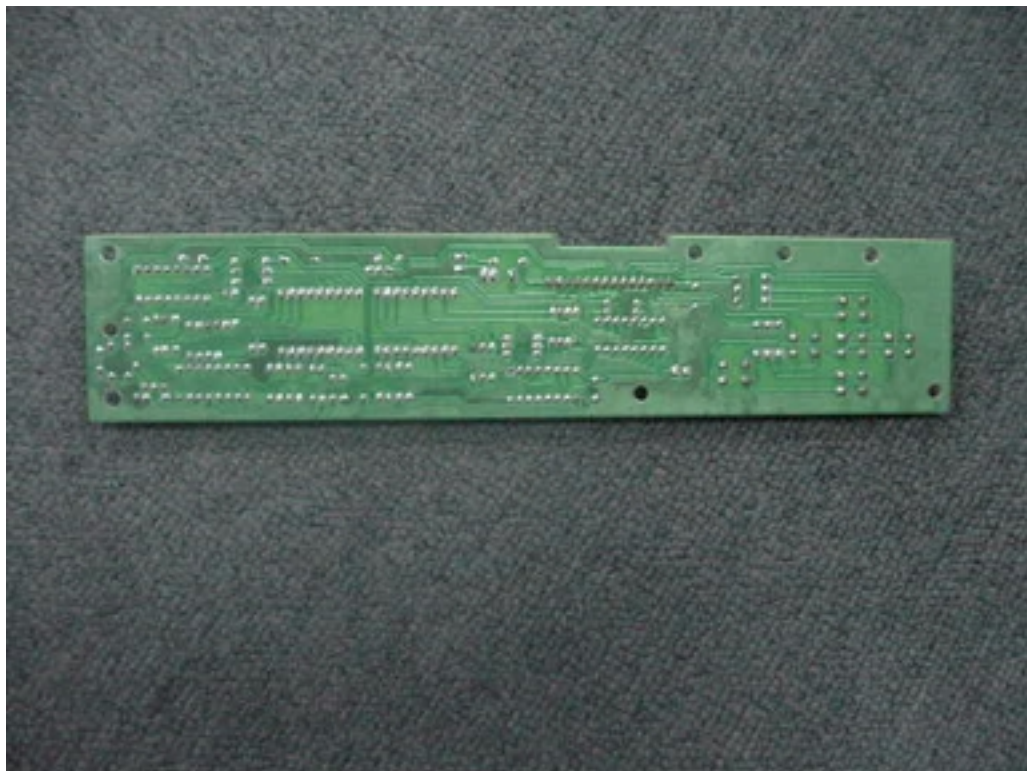




**Front panel – Component side**



**Front panel – Soldering side**



Infrared remote controller - outline



Cover removed





**Soldering side of the board**



**Component side of the board**

