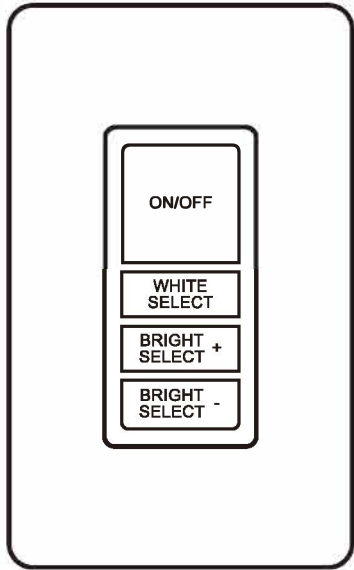


One-Touch Sync  
Remote Control  
with Wall-Mount Cradle



Model:  
81795

Thank you for your purchase!

Instructions  
made easy



Read instructions or watch  
an easy-to-follow video.

Scan code or visit  
[byjasco.com/81795i](https://byjasco.com/81795i)

Register your  
product



Receive exclusive deals and  
register your product.

Scan code or visit  
[byjasco.com/deals](https://byjasco.com/deals)



Discover more  
innovative lighting at  
[www.enbrightenme.com](https://www.enbrightenme.com).



Like our product?  
Leave a review  
on your favorite  
retailer website or  
[amazon.com](https://amazon.com).



Having problems?  
Let us know how  
we can help.  
Call 1-800-654-8483,  
M-F, 7AM-8PM  
Central Time.

PAIRING/UNPAIRING TO LIGHT FIXTURE

PAIRING - LINKING REMOTE TO ONE OR MORE LIGHT FIXTURES

- Place bottom of remote over the spring tab in the remote bracket, then gently press down and push the remote into the bracket. (Fig. 1) Make sure each light fixture is not plugged into an outlet and the remote is nearby with its battery installed.
- Plug each light fixture into the outlet.
- Within 10 seconds, press and hold the remote's ON/OFF button until the UCF light fixture blinks once, indicating the remote is now paired and will operate all paired light fixtures.

UNPAIRING - REMOVING ALL PAIRED DEVICES FROM LIGHT FIXTURE

- Make sure the light fixture is not plugged into an outlet and the remote is nearby with its battery installed.
- Plug the light fixture into the outlet.
- Within 10 seconds, press and hold the remote's ON/OFF button until the UCF light fixture blinks twice, indicating the remote is no longer paired to your light.

OPERATION

- ON/OFF: Press and release button to turn lights on or off.
- White Select: Press and release button to advance through color-temperature options and select your preference.
- Bright Select +: Press and release or press and hold button to find desired brightness level. Light fixture will blink once upon reaching maximum brightness.
- Bright Select -: Press and release or press and hold button to find desired dimming level. Light fixture will blink once upon reaching maximum dimming.

2700K	3000K	4000K	5000K	6500K
Soft white	Warm white	Cool white	Daylight	Cool daylight

REMOTE

Functional range\*: Up to 60ft.

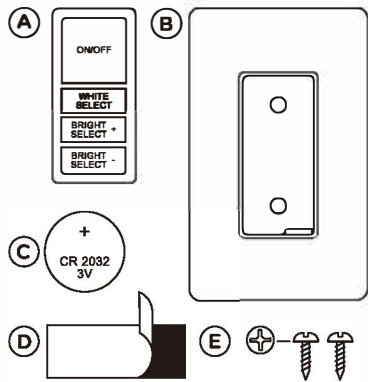
Battery type: CR2032 (included)

\* Functional range may be adversely affected by one or more of the following factors: weather, radio frequency interference, low remote control battery and obstructions between the remote control and receiver.

TROUBLESHOOTING

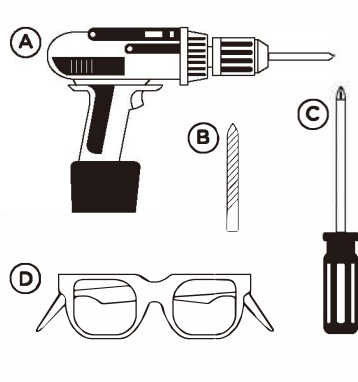
PROBLEM	CORRECTIVE ACTION
Indicator light on remote does not light up red when button is pushed.	<ul style="list-style-type: none"><li>Battery may be installed incorrectly. Reinstall battery.</li><li>Battery may need to be replaced. Install new CR2032 battery.</li></ul>
Indicator light on remote lights up, but light does not turn on.	<ul style="list-style-type: none"><li>Make sure light is manually turned on and light fixture is working.</li><li>Receiver may have become unpaired. Pair remote to receiver – see pairing section of manual.</li></ul>

INSIDE THE BOX



- A. Remote control light switch  
B. Mounting bracket with wallplate  
C. CR2032 battery  
D. Magnetic 3M mounting tape  
E. Mounting screws

TOOLS NEEDED

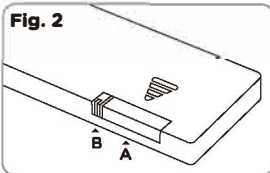
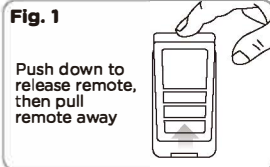


- A. Drill  
B. 3/32in. drill bit or 1/4in. if using anchors (not included)  
C. Phillips-head screwdriver  
D. Safety glasses

INSTALLING BATTERY (REMOTE)

- Remove the remote from the wall mount/wallplate – push the remote down and pull away from the wallmount/wallplate. (Fig. 1)
- Simultaneously push in the tab as you pull out the battery drawer. (Fig. 2a, 2b)
- Place a new battery in the drawer with (+) side of the battery facing up.
- Push the battery drawer into the remote. (Fig. 2a)

**NOTE:** The red indicator light on the front of the remote should light up when a button is pressed.



WARNING

- DO NOT MIX OLD AND NEW BATTERIES
- DO NOT MIX ALKALINE, STANDARD (CARBON-ZINC) OR RECHARGEABLE (NICKEL-CADMIUM) BATTERIES
- DO NOT USE IN WET LOCATIONS
- BATTERIES MAY LEAK HARMFUL LIQUIDS OR IGNITABLE MATERIALS OR EXPLODE CAUSING INJURY AND PRODUCT DAMAGE
- REPLACE ALL BATTERIES AT THE SAME TIME
- REPLACE FULLY DISCHARGED BATTERY IMMEDIATELY
- REMOVE BATTERIES IF THE PRODUCT IS TO BE UNUSED FOR EXTENDED PERIODS OF TIME
- STORE INDOORS WHEN NOT IN USE

WARNING

- INGESTION HAZARD:** This product contains a button cell or coin battery.
- DEATH** or serious injury can occur if ingested.
- A swallowed button cell or coin battery can cause **Internal Chemical Burns** in as little as **2 hours**.
- KEEP** new and used batteries **OUT OF REACH OF CHILDREN**.
- Seek immediate medical attention** if a battery is suspected to be swallowed or inserted inside any part of the body.



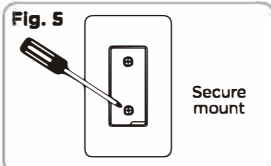
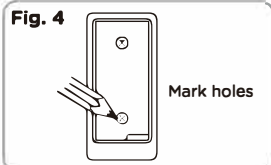
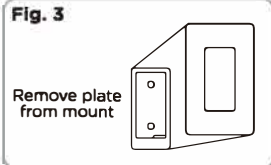
- LITHIUM COIN CELL BATTERY #CR2032
- 3 VOLTS

- Remove and immediately recycle or dispose of used batteries according to local regulations and keep away from children. Do NOT dispose of batteries in household trash or incinerate.
- Even used batteries may cause severe injury or death.
- Call a local poison control center for treatment information.
- Non-rechargeable batteries are not to be recharged.
- Do not force discharge, recharge, disassemble, heat above [heat above 60° C or 140° F] or incinerate. Doing so may result in injury due to venting, leakage or explosion resulting in chemical burns.
- Ensure the battery is installed correctly according to polarity (+ and -).
- Do not mix old and new batteries, different brands or types of batteries, such as alkaline, carbon-zinc, or rechargeable batteries.
- Remove and immediately recycle or dispose of batteries from equipment not used for an extended period of time according to local regulations.
- Always completely secure the battery compartment. If the battery compartment does not close securely, stop using the product, remove the battery and keep it away from children.

REMOTE MOUNTING OPTIONS

WALL MOUNT WITHOUT WALLPLATE

- Remove the remote from the wall mount. (Fig. 1)
- Remove the wall mount from the wallplate. (Fig. 3)
- Place the wall mount in the desired location and mark the mount holes. (Fig. 4)
- If mounting directly to a stud, use a 3/32in. drill bit.
- If mounting to drywall, anchors are recommended. Drill holes using a 1/4in. drill bit, then gently tap in anchors (*not included*).
- Secure the mount with the provided screws. Do not overtighten. (Fig. 5)



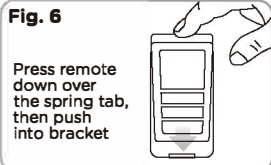
WALL MOUNT WITH WALLPLATE

- Remove the remote from the wall mount. (Fig. 1)
- Place the wall mount, with the wallplate attached, in the desired location and mark the mount holes. (Fig. 4)
- If mounting directly to a stud, use a 3/32in. drill bit.
- If mounting to drywall, anchors are recommended. Drill holes using a 1/4in. drill bit, then gently tap in anchors (*not included*).
- Secure the mount with the provided screws. Do not overtighten. (Fig. 5)

INSERTING/REMOVING REMOTE FROM WALL MOUNT

INSERTING

- Place bottom of remote over the spring tab in the remote bracket, then gently press down and push the remote into the bracket. (Fig. 6)
- Remote should snap into place and be held firmly.



REMOVING

- Gently push the top of the remote down and pull away from the remote mount. (Fig. 1)

WARRANTY INFORMATION

**IMPORTANT — PLEASE READ** Refer to the manual or visit [www.enbrightenme.com/warranty](https://www.enbrightenme.com/warranty) for limitations and restrictions on warranties and the product registration information.

This Jasco product has a limited-lifetime replacement warranty. Please contact our U.S.-based Consumer Care at 1-800-654-8483, M-F, 7AM-8PM Central Time or [www.enbrightenme.com/warranty](https://www.enbrightenme.com/warranty) if the unit should prove defective within the warranty period.

FCC STATEMENT

Suppliers Declaration of Conformity | Model #: 81795 | Jasco Products Co., 10 E. Memorial Rd., Oklahoma City, OK 73114, [www.byjasco.com](https://www.byjasco.com)

This device complies with Part 15 of the FCC Rules. Operation is subject to the following two conditions: (1) this device may not cause harmful interference, and (2) this device must accept any interference received, including interference that may cause undesired operation.

FCC NOTE: The manufacturer is not responsible for any radio or TV interference caused by unauthorized modifications to this equipment. Such modifications could void the user's authority to operate the equipment.

NOTE: This equipment has been tested and found to comply with the limits for a Class B digital device, pursuant to Part 15 of the FCC Rules. These limits are designed to provide reasonable protection against harmful interference in a residential installation. This equipment generates, uses and can radiate radio frequency energy and, if not installed and used in accordance with the instructions, may cause harmful interference to radio communications. However, there is no guarantee that interference will not occur in a particular installation. If this equipment does not cause harmful interference to radio or television reception, which can be determined by turning the equipment off and on, the user is encouraged to try to correct the interference by one or more of the following measures:

- Reorient or relocate the receiving antenna.
- Increase the separation between the equipment and receiver.
- Connect the equipment into an outlet on a circuit different from that to which the receiver is connected.
- Consult the dealer or an experienced radio/TV technician for help.

Radiation Exposure Statement

The device has been evaluated to meet general RF exposure requirement. The device can be used in portable exposure condition without restriction.

MADE IN CHINA

Distributed by Jasco Products Company LLC, 10 E. Memorial Rd., Oklahoma City, OK 73114.

This Jasco product has a limited-lifetime warranty. Visit [www.enbrightenme.com/warranty](https://www.enbrightenme.com/warranty) for warranty details.

Questions? Contact our U.S.-based Consumer Care at 1-800-654-8483, M-F, 7AM-8PM Central Time.

©JASCO 2024 | 81795 | 06/24/24 v1