

## 5.Video recording and playback

For video recording, please insert the TF card first.

Click the online camera in the APP to enter the video operation interface, and click the middle picture area to start the video. (Fig.7)

Video recording: Click the icon "Recording" below to start recording when the video is on, and click again to stop recording.

Video playback: Click "Recording" below the picture to enter the playback interface. The blue part in the time period is the video recording time period. (Fig.8)

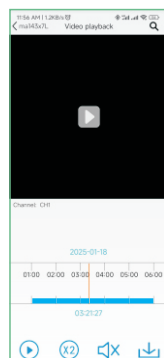
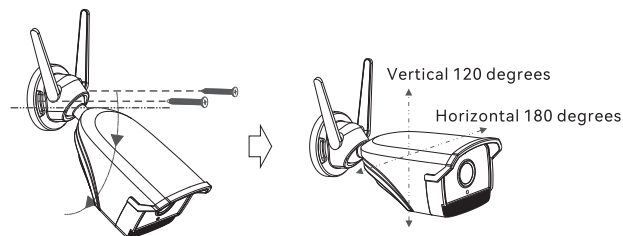


Fig. 8

## 6. Installation

Please determine the installation location before installation, refer to the following steps for operation:

- Rotate the camera downward;
- Insert two screws at the screw jack of the bracket.
- Rotate the camera to an appropriate angle.



## 7. Structure description

Product model: HA-8407

User interface: Mobile phone client

Video format: Main stream 1080P/D1 25fps,

Sub-stream D1/CIF 25fps

Image sensor: GC2063, 2MP (1920\*1080)

Lens focal length: 4mm

Audio format: G711A with built-in microphone and speaker

Voice support: Supports two-way voice and remote monitoring

Rotation angle of the bracket: Horizontal 180°,

Vertical 120°

Infrared lamp irradiation distance: 20 - 30 meters

Storage interface: TF card, maximum support 128G (please format before use)

Sound and light alarm: Supported

Video coding standard: H.265

Supported protocols: Meian private protocol, Meian P2P protocol, Onvif

Size: L78 \* W90 \* H216.5 mm without antenna

Power supply: DC 12V/1A

Waterproof level: IP 66

Operating temperature: -5°C to 55°C

Installation method: wall mounting

Installation location: indoor and outdoor installation

## FCC Radiation Exposure Statement

This equipment complies with FCC radiation exposure limits set forth for an uncontrolled environment. This equipment should be installed and operated with minimum distance 20cm between the radiator & your body.

### FCC Warning

This device complies with Part 15 of the FCC Rules. Operation is subject to the following two conditions:

(1) This device may not cause harmful interference, and (2) this device must accept any interference received, including interference that may cause undesired operation.

Note: This equipment has been tested and found to comply with the limits for a Class B digital device, pursuant to part 15 of the FCC Rules. These limits are designed to provide reasonable protection against harmful interference in a residential installation. This equipment generates, uses and can radiate radio frequency energy and, if not installed and used in accordance with the instructions, may cause harmful interference to radio communications. However, there is no guarantee that interference will not occur in a particular installation. If this equipment does cause harmful interference to radio or television reception, which can be determined by turning the equipment off and on, the user is encouraged to try to correct the interference by one or more of the following measures:

—Reorient or relocate the receiving antenna.

—Increase the separation between the equipment and receiver.

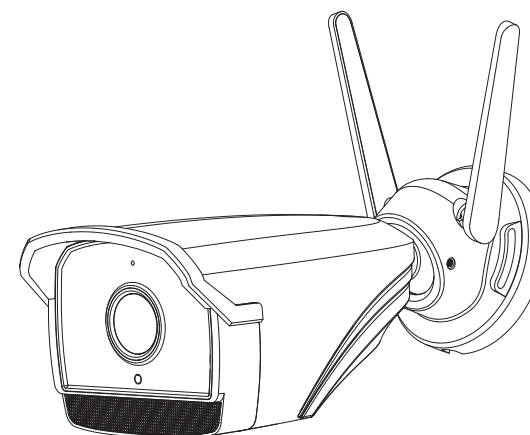
—Connect the equipment into an outlet on a circuit different from that to which the receiver is connected.

—Consult the dealer or an experienced radio/TV technician for help.

NOTE 2: Any changes or modifications to this unit not expressly approved by the party responsible for compliance could void the user's authority to operate the equipment.

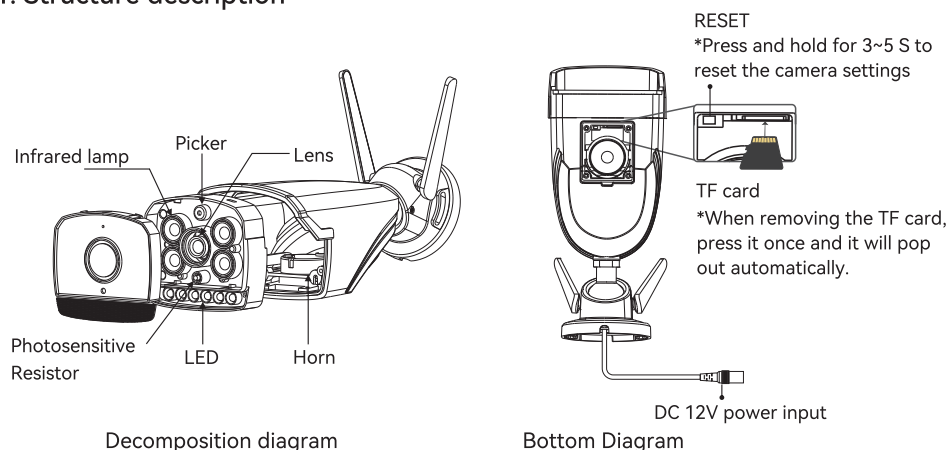
# USER MANUAL

## Network HD camera



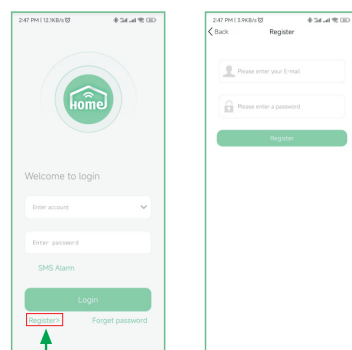
HA-8407

## 1. Structure description



## 2. Download and register an account

Please scan QR code below to download IOS&Android app, or search "smartsecurity" in iOS & Googleplay store. New users, please click "Register" and complete the registration of a new account according to the prompts.



For new users, please click "Register".

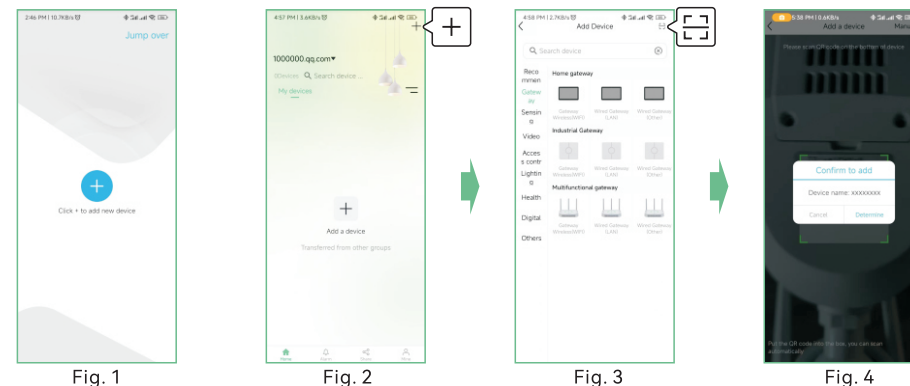
## 3. Device addition and WiFi configuration

Add camera:

①When logging into the APP for the first time, you will enter the guide interface(Fig.1). Users can add devices according to the prompts, or click "Jump over" to directly enter the main interface. Click the "+" in the upper right corner - "📱" to scan the QR code at the bottom of the camera.

② Click "Determine" in the pop-up window after successful scanning, Return to the main interface.

\*Note: One device can only be added by one account. Before other users add it, the added user needs to unbind it. Long press the device and you can delete it in the pop-up window.

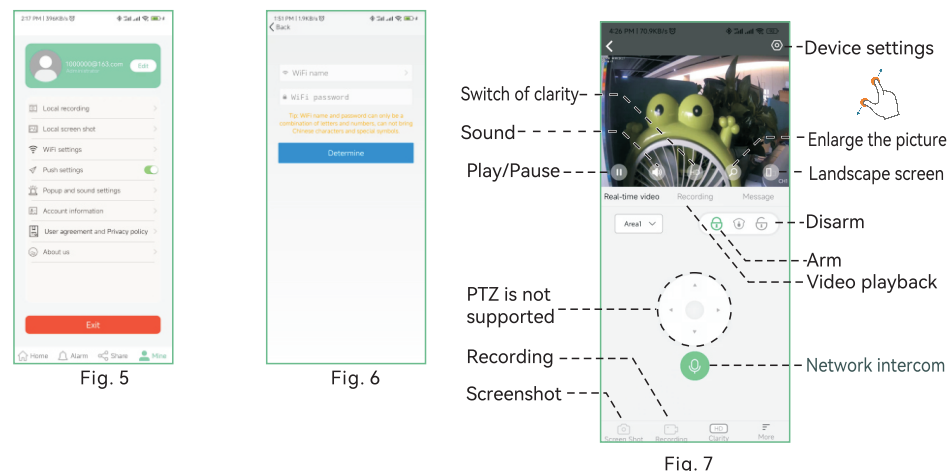


WiFi configuration:

Please complete the following operations within 10 minutes after the camera is powered on:

- ①Power on the camera;
- ②Enter the APP "Mine"(Fig.5) -- "WiFi Settings" -- "Sound wave configuration WiFi";
- ③Select the WiFi to be configured and enter the WiFi password, and click "Determine";(Fig.6)
- ④Increase the volume of the mobile phone and bring the mobile phone close to the camera, and wait for the camera's voice prompt "Successfully connected WiFi";
- ⑤After the prompt of successful configuration, return to the main interface of the APP.

Wait for a while and the camera will be online. If the camera is not online, please check whether the configured WiFi is available and whether the entered password is correct.



## 4. Alarm setting for arming and disarming

When arming is enabled, an alarm will be triggered when a human figure is detected, and the alarm information will be prompted in a pop-up window. When disarming is enabled, no detection will be performed.