

Annex F: Internal photographs of the EUT

Photo No. 1: cover removed



Photo No. 2: 12.5 kW Magnetron



Photo No. 3: AC in, fuses and AC filter

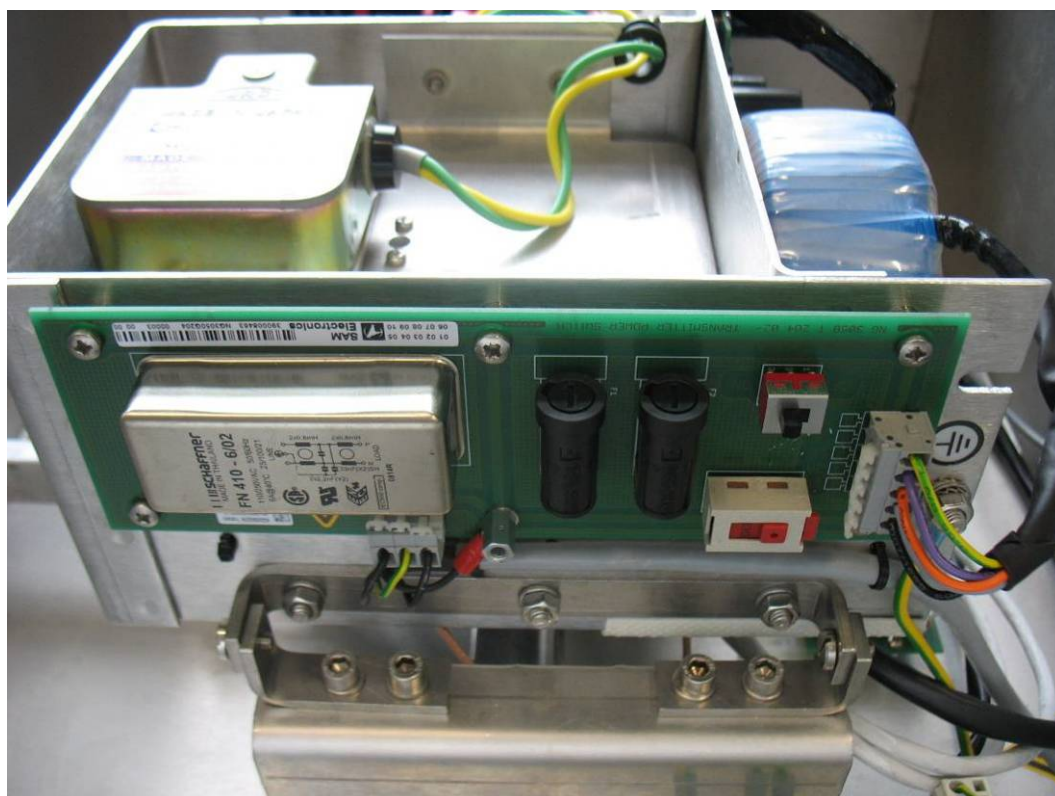


Photo No. 4: type label

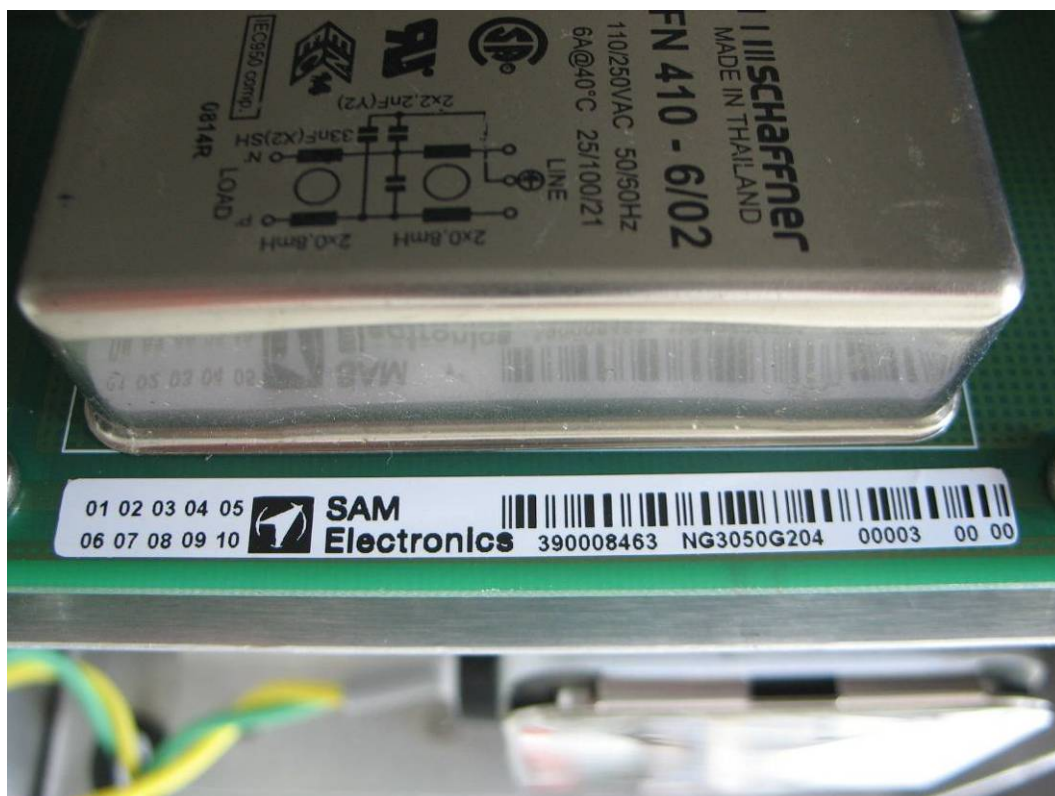


Photo No. 5: type label



Photo No. 6: PSU

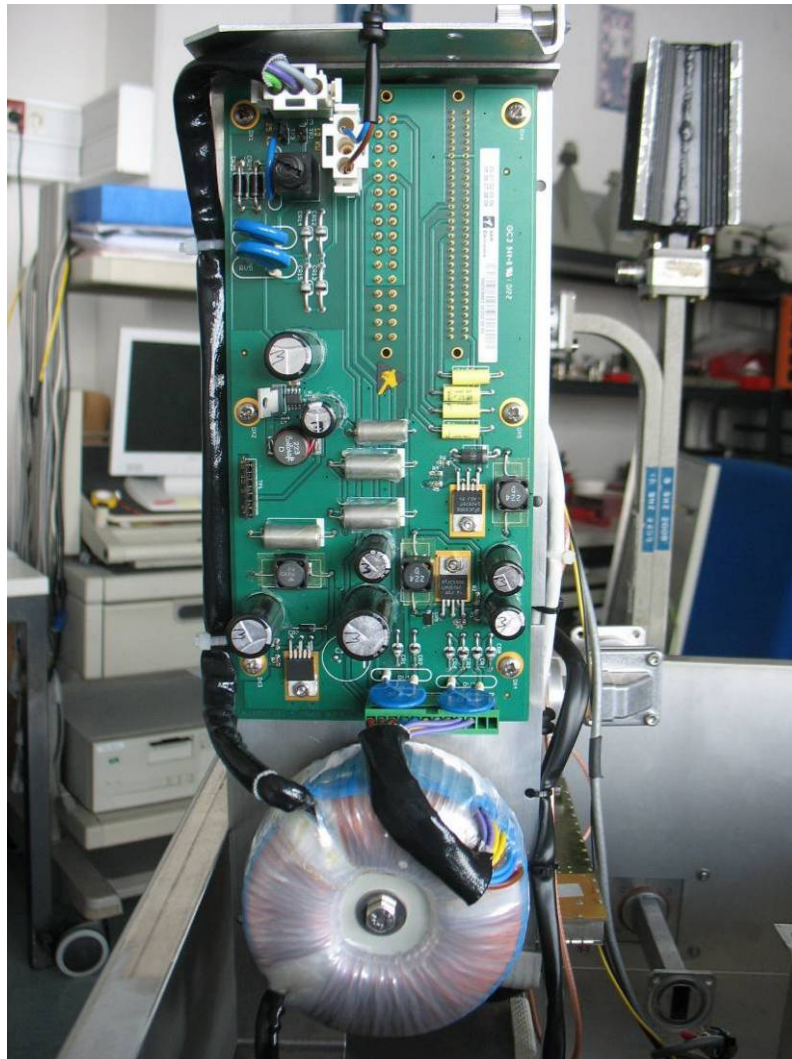


Photo No. 7: PSU board

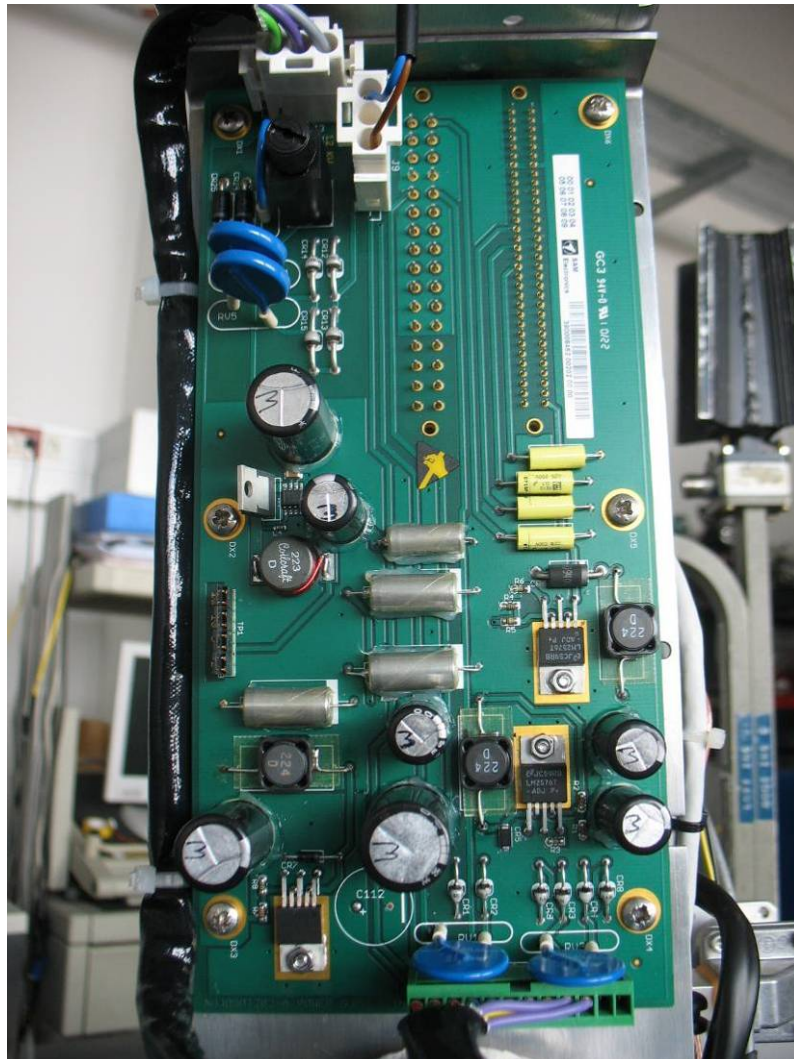


Photo No. 8: PSU, type label



Photo No. 9: IP RADAR Controller (IPRC), circulator and receiver

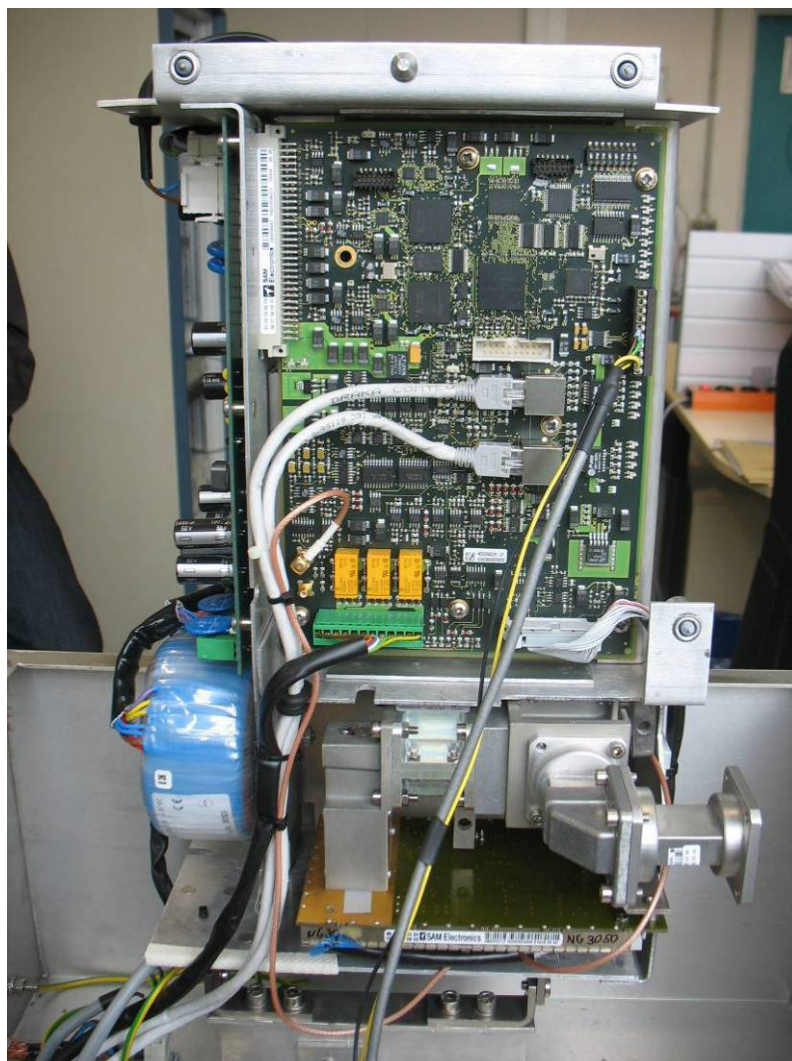


Photo No. 10: IP RADAR Controller (IPRC)

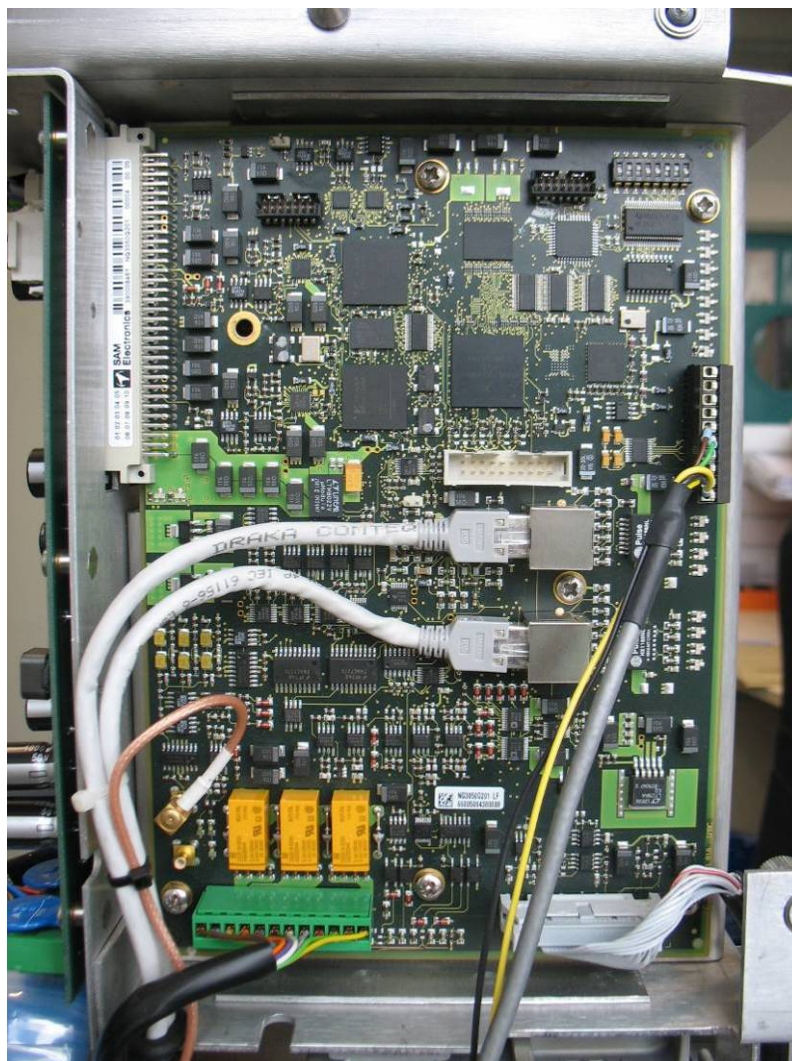


Photo No. 11: IP RADAR Controller (IPRC), type label



Photo No. 12: circulator, limiter, low noise receiver front end and receiver

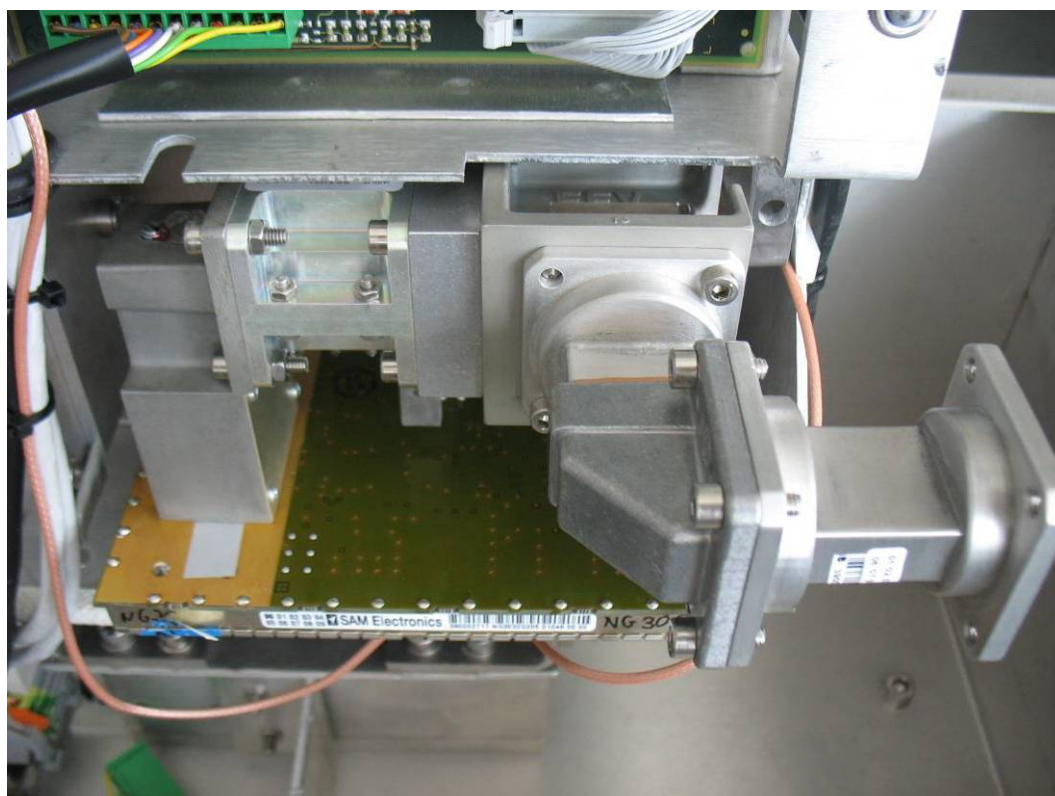


Photo No. 13: receiver, type label

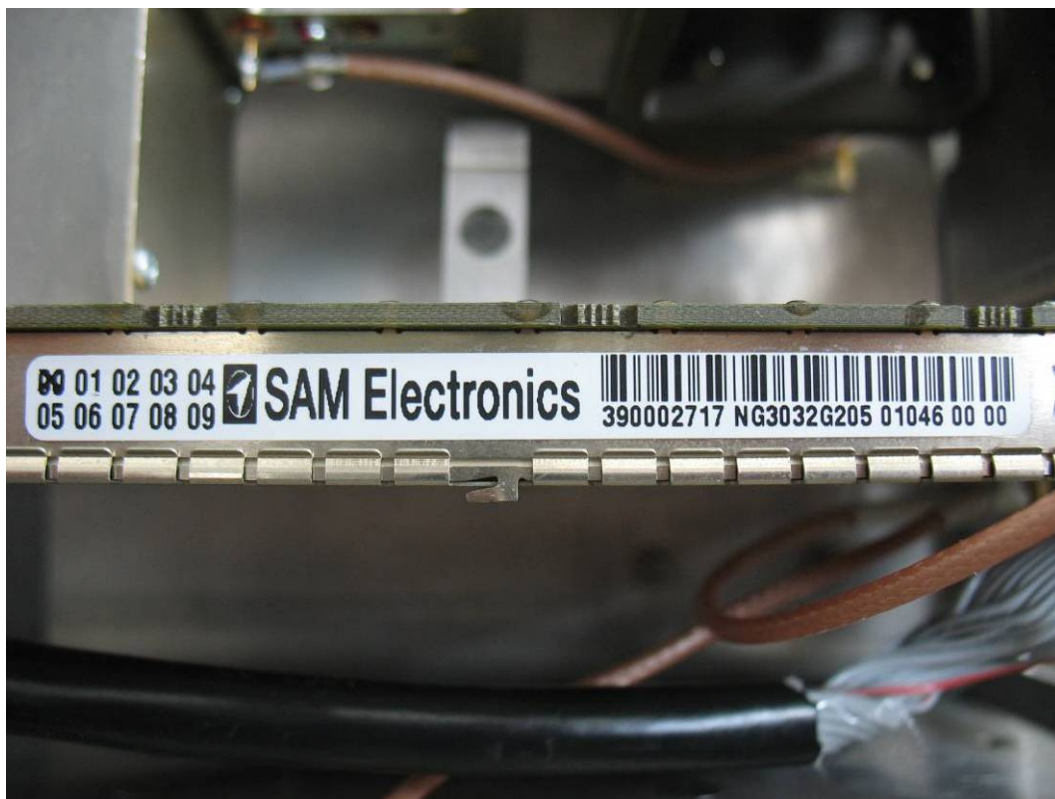


Photo No. 14: pulse modulator

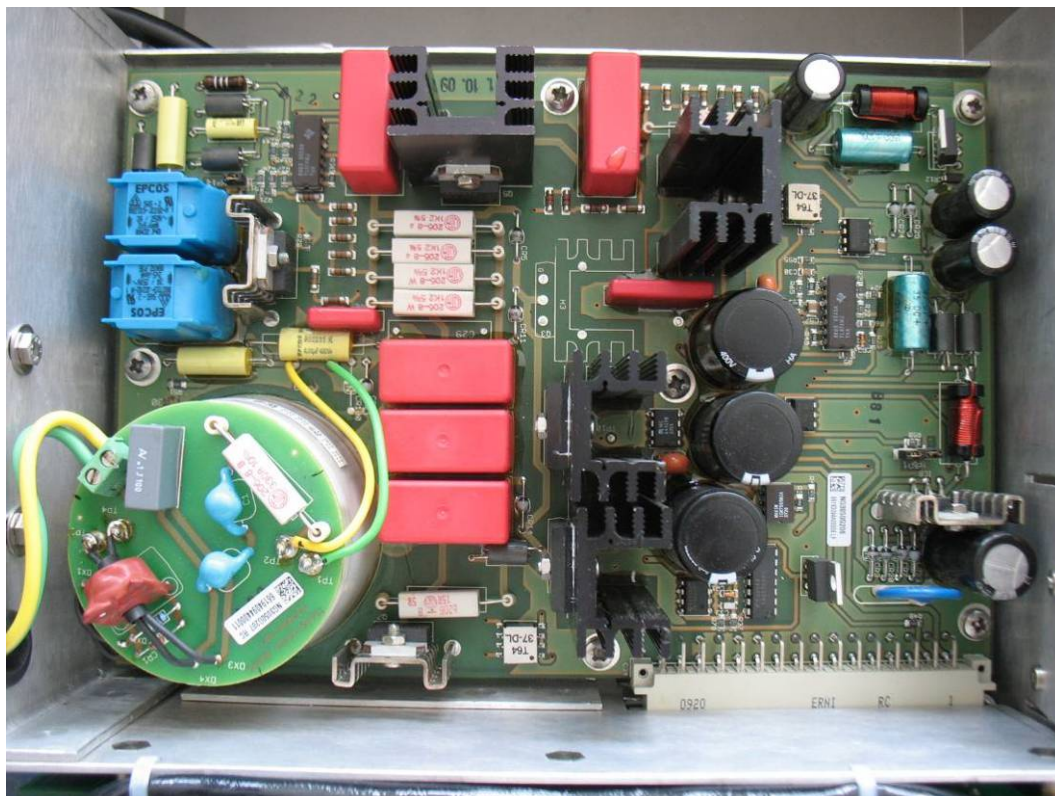


Photo No. 15: pulse modulator, type label



Photo No. 16: HV transformer

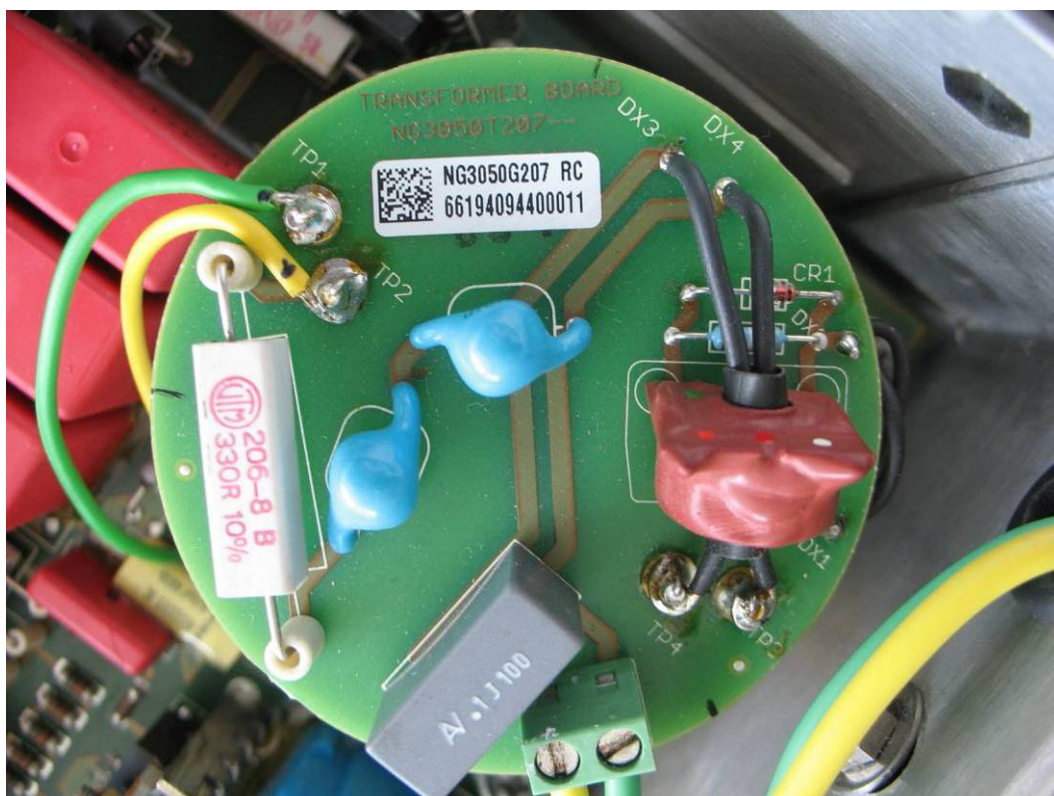


Photo No. 17: HV transformer, type label

