

## 12.2 Sorting Music

Music files at large capacity hard drive need to be sorted since it's easy to organize and search. TizzBird provides various "SORTING" functions based on the powerful Android database. Press GREEN color button on remote to sort by ALBUM, ARTIST, TITLE or YEAR. The following two images show SORT BY GENRE and SORT BY YEAR.



SORT BY GENRE



SORT BY YEAR

## 12.3 Music Playback Screen

Select album art to playback the selected music. The following image will appear.

**Left pane:** Shows album-art image, current playback status and position.

**Right pane:** Shows list of songs, song information and album-art thumbnail.

Press <UP> or <DOWN> arrow key to browse songs and press <OK> to start playback. Now playing music will be shown in YELLOW and selected music in LIGHT GREEN color. Press <PREV> or <NEXT> button to turn pages, if there are more pages on the song list,



## 12.4 Music Playback Menu

Available button when playback music is like this:

**<PLAY/PAUSE> button:** play or pause the music

**<UP> or <DOWN> button:** skip playback position designated at settings.

## 13 Watching Photo

### 13.1 Photo Browser

The following PHOTO BROWSER screen will appear when selecting PHOTO BROWSER. It's composed of superb folder thumbnails COVER-VIEW which is quite neat and intuitive. Each image shows thumbnails of photos that folder contains.



### 13.2 Photo Browsing Menu

Press <MENU> button to bring quick <SEARCH FOLDER> function.

### 13.3 Photo Wall

The following screen will appear after selecting one of the folder thumbnails. Photo wall can be used to select one of photos. Use arrow buttons to navigate the photos and press <OK> button to see the photo at full screen.



## **13.4 Photo Playback Screen**

Photo slide show will start automatically, so next photos will keep appearing with transition effect. The various TRANSITION EFFECTS can be configured at <SETTINGS BROWSER> → <PHOTO>.



## **13.5 Slideshow Control**

Slideshow can be controlled by arrow and <PLAY/PAUSE> buttons. Press <PLAY/PAUSE> button to pause or resume to playback. Use arrow keys to change the slide direction.

## 14 Posters, Album Art and Photo Arrangements

The arrangement of each browser and shape of each item can be configured at each browser. For example, you can change the number of items of movie browsers and shape of posters.

Press <Menu> button on the remote at Movie Browser. The <Movie Settings> Menu was added to configure the movie browser directly. This will bring the <Settings Browsers> → <Movie> directly.



You can configure the movie posters arrangements and shape of posters.

Press <Menu> button on the remote at Movie Browser. The <Movie Settings> Menu was added to configure the movie browser directly. This will bring the <Settings Browsers> → <Movie> at movie browser.



There are new setting items at PAGE2 of movie settings like above screen, which are <Browser

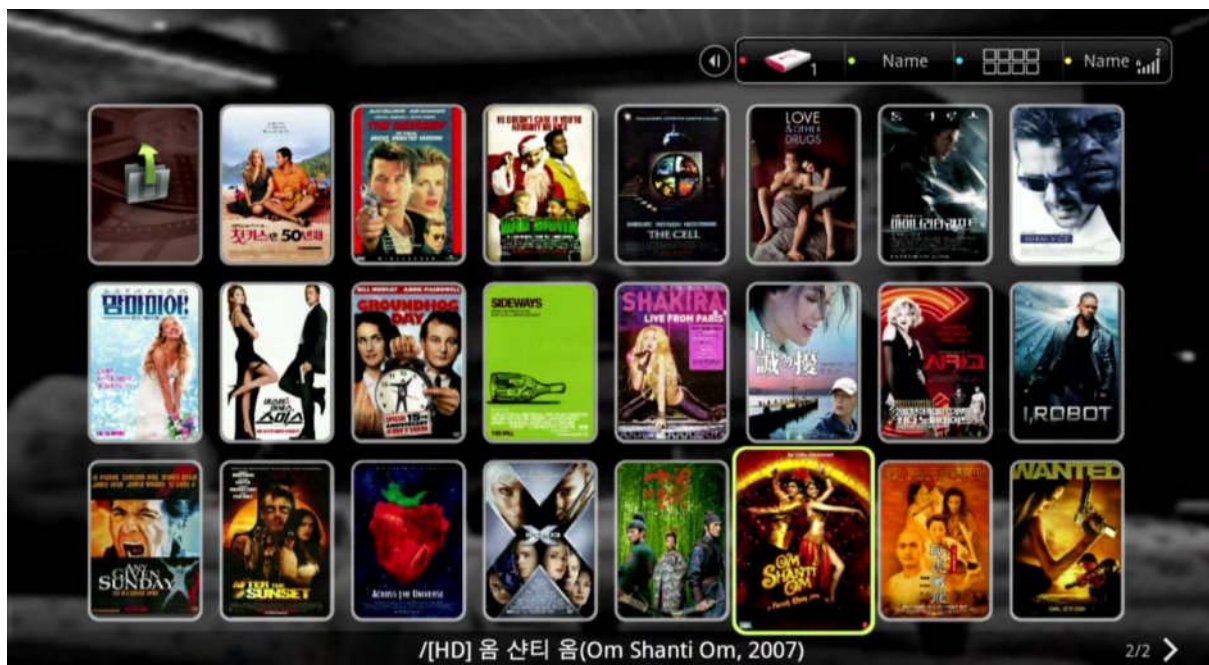


Mode> and <Browser Item Mode>. You can configure layouts of browsers at <Browser Mode> and configure shape of each item at <Browser Shape Mode>.

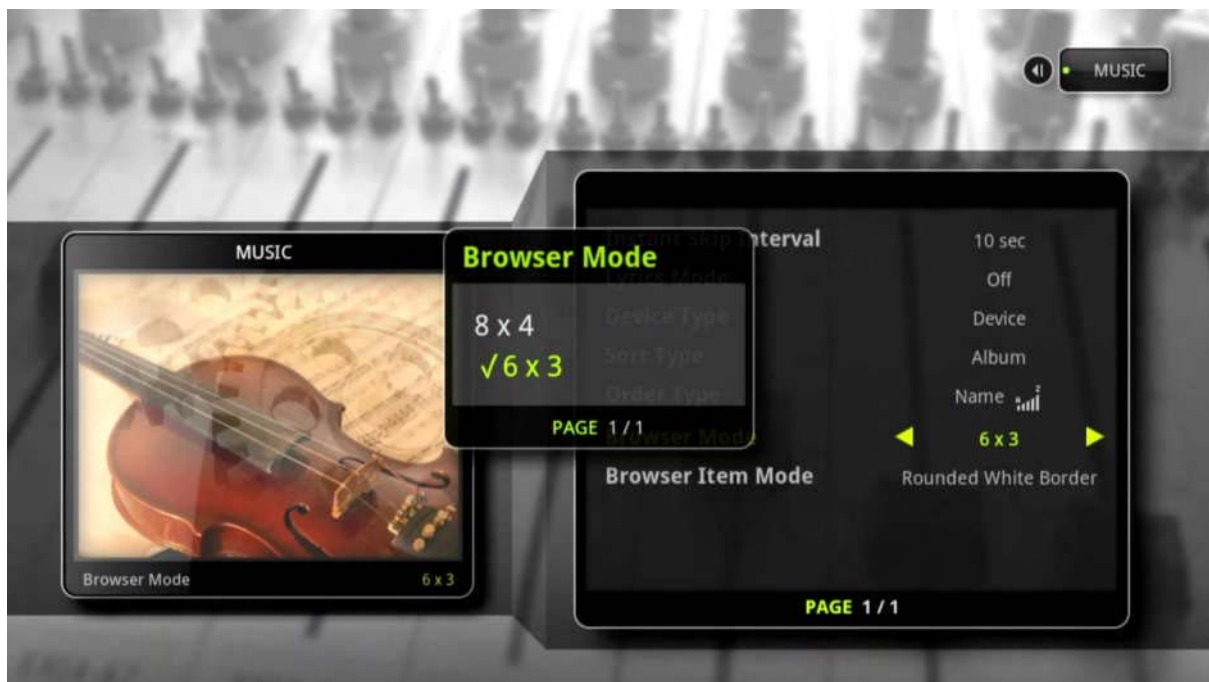
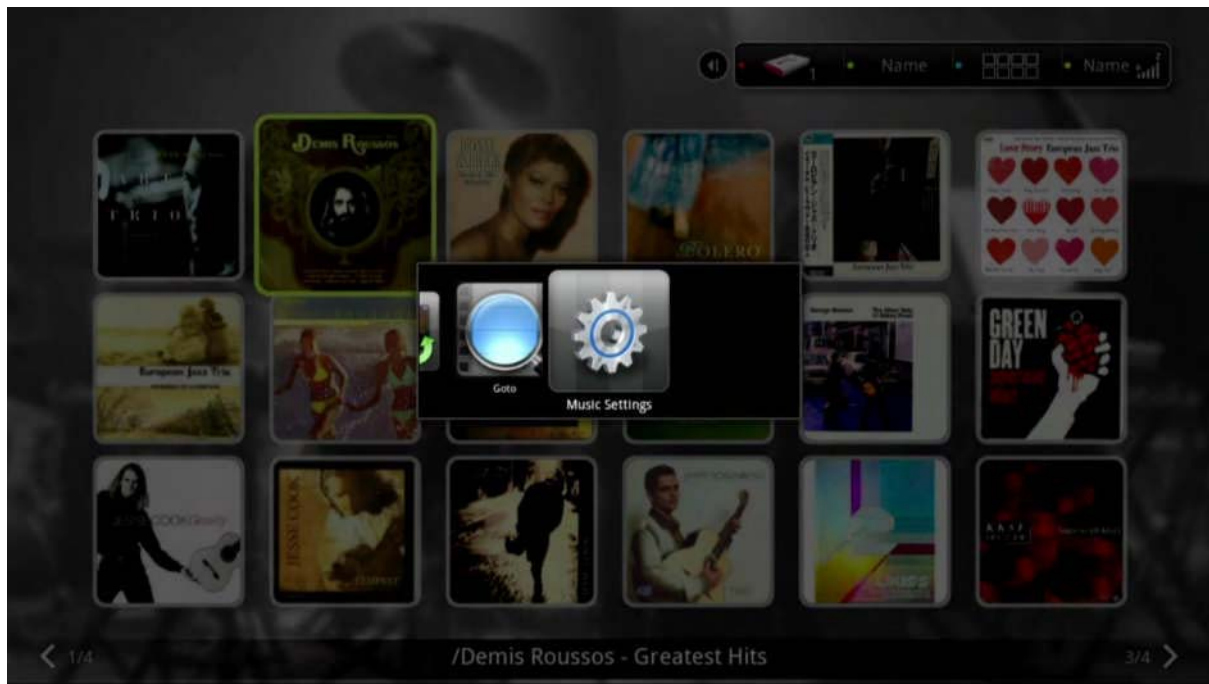
For example, the <Browser Item Mode> will bring you the following screen to configure the border type, border alpha value, width, radius and item alpha. Alpha is transparency rate.



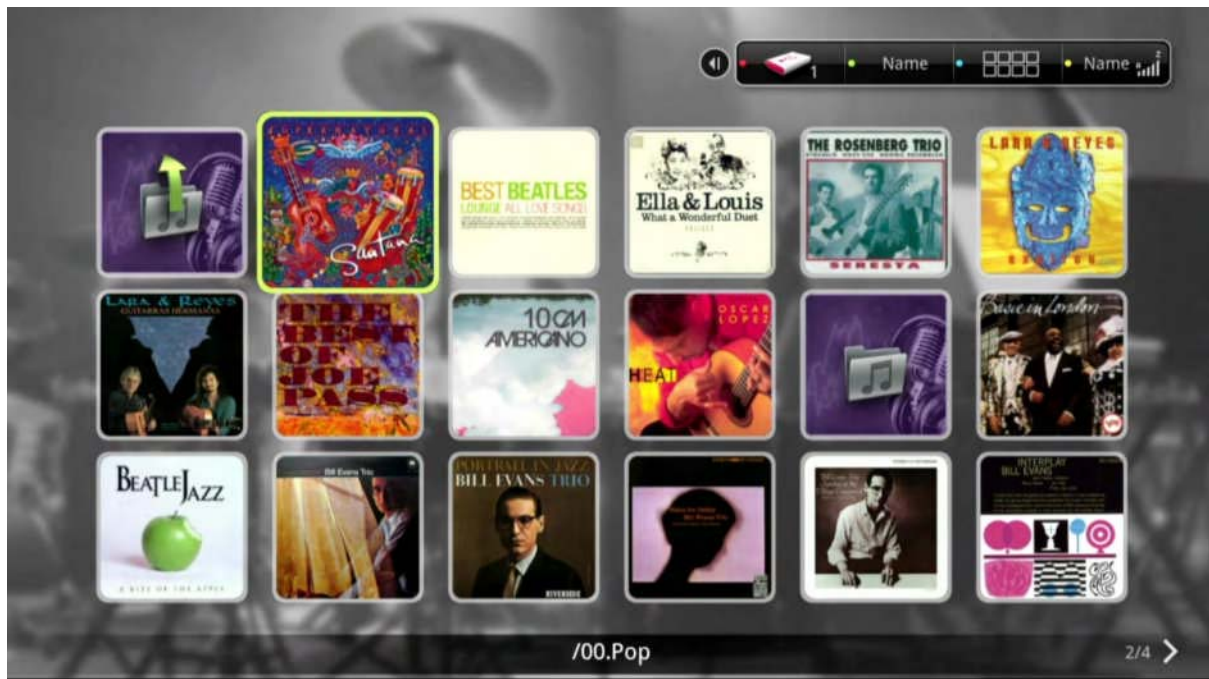
For example, configure 8x3, rounded border and border width 3 will give you something like this movie browser.



This kind of configuration is also possible at MUSIC and PHOTO BROWSER. Please notice the following screen-shots.



For example, configure 6x3, rounded border and border width 3 will give you something like this music browser.



Here's the photo setting:









For example, configure 7x3, rounded border and border width 3 will give you something like this photo browser.



## 15 Using File Browser

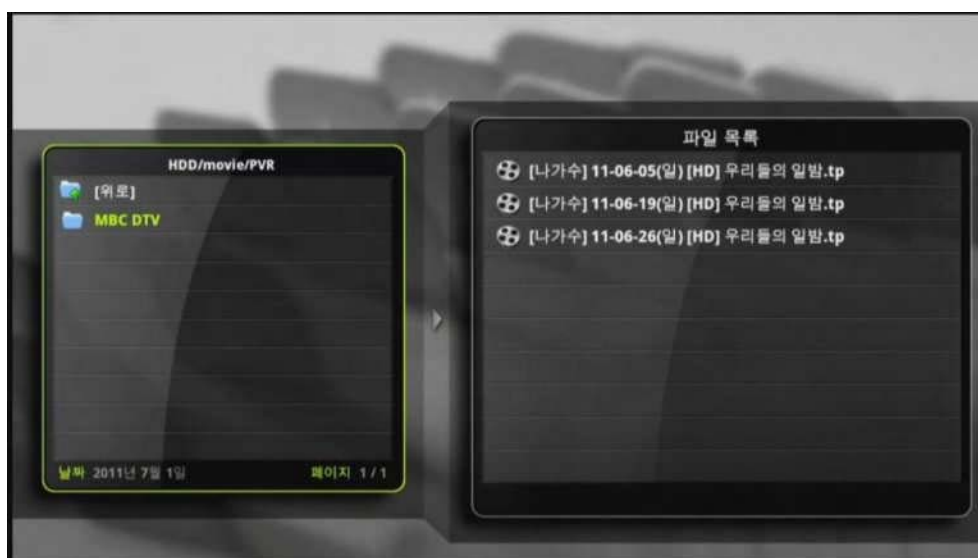
### 15.1 File Browser Screen

The following screen will appear when selecting FILE BROWSER. This is quite similar browser user interface that legacy media players provided before. Folder or file based browsing is possible on this browser, and selecting and playback the file directly.

The left pane is FOLDER PANE, and the right pane is FILE PANE.



Folders can be browsed by arrow keys and press <OK> button to select that folder. The files will be appeared on the right pane if that folder contains the files. The GREEN outline on the pane means it's selected. Press <RIGHT> arrow button to move the FILE PANE and select the file. Press <OK> to select and start playback that file.



## 15.2 Selecting Device at File Browser

External USB, internal HDD storage device, or network drive can be selected at FILE BROWSER. Press <RED> button on the remote and the device drop-down list will pop-up like following image. Use <UP> or <DOWN> arrow key to browse devices. Choose one of them then press <OK> to select it.



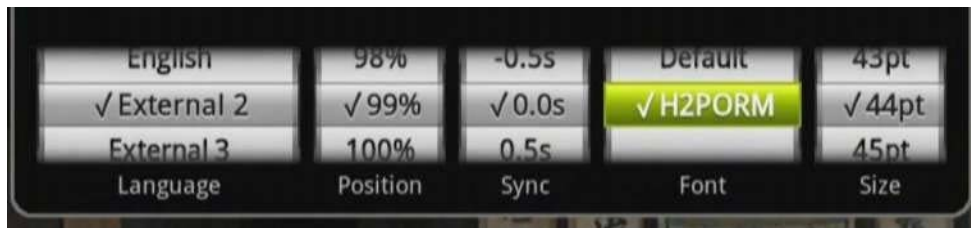
## 15.3 Register Subtitle Font File

Subtitle font file can be selected at file browser. Copy or move the font file (true-type font file - .TTF extension) to the USB drive or internal HDD from PC, then connect the drive to TizzBird. Press <RED> button to select drive and navigate into the folder that font file was copied. The font file will appear like the following image.

Select one of the font file and press <OK> button to register. Several font files can be registered at once.



Registered font files will appear at movie playback screen menu. Press <MENU> button and choose <SUBTITLE> icon.



## 15.4 Using File Operation

Rev 1.12 firmware provides the "File Operation" capability which enables COPY, MOVE, DELETE, RENAME and NEW FOLDER functions. Press "MENU" button on the remote then select the "File Operation" ICON at the pop-up window to enter this mode.



This will bring the following screen.



The left pane is source window and the right pane is target window. The "File Operation" will function from left pane to right pane. The following remote buttons can be used.



OK button →

Browse and enter the folder.



Bookmark button →

Select the item to operate.



Menu button →

Pop-up the FILE OPERATING ICONs.

Please use left or right arrow button to move left or right pane. The RED button can be used to select the device at each pane. This RED button enables the selection of source or target device at each pane.



Pressing BOOKMARK button will check the selected item like below picture. The check icon will appear on the small box at left side of item.



The total size of selected item will be also calculated whenever BOOKMARK button is pressed. It will take some time if there are many items at selected folder.

Pressing MENU button will bring the following POP-UP menu to select the function. The *COPY*, *MOVE*, *DELETE*, *SELECT ALL*, *CANCEL*, *RENAME*, *NEW FOLDER* can be selected.



The *COPY* or *MOVE* operation will be performed always from LEFT PANE to RIGHT PANE. The *DELETE*, *RENAME*, *SELECT ALL* and *CANCEL* will be performed always at LEFT PANE. The *NEW FOLDER* will be performed on selected pane. Please select the wanted icon to execute the operation.

## 16 Connecting Internet

### 16.1 Execute Internet Browser

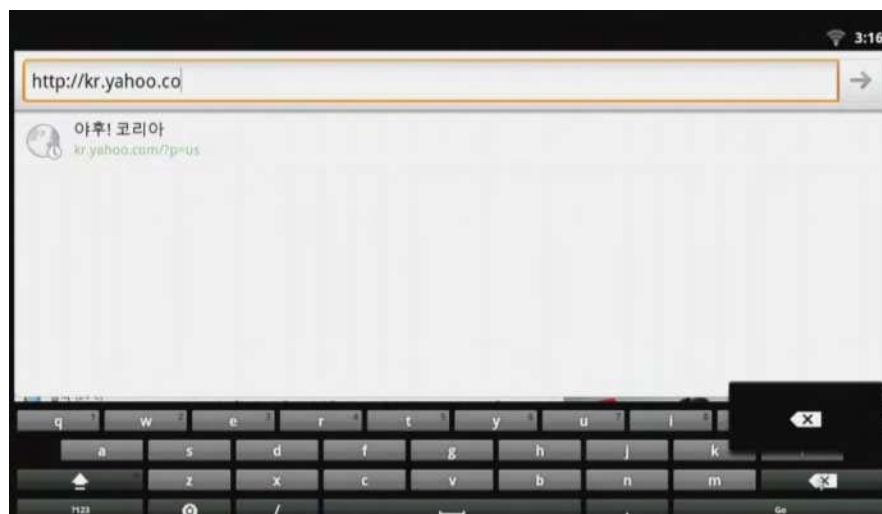
Web browser will appear if WEB BROWSER was selected at HOME SCREEN and network was connected like following image.

※ Using mouse is highly recommended at WEB BROWSING. Wireless RF or USB mouse can be used. Web address or other information can be entered thru virtual keyboard with mouse. Wanted article or link can be clicked with mouse as well.



### 16.2 Control Internet Browser

Press <BACK> button on remote or click mouse right button to move back to the previous screen. Press <MENU> button on the remote to change the home page and register at there.



## 17 Install and Execute Application

### 17.1 Move applications at Android Phone to TizzBird

The applications on the Android smart phone can be installed on this unit. The procedures are like this.

- 1) Download or move the applications on the Android smart phone at USB flash drive.
  - Move the applications on the smart phone to SD card. This can be done by Android application like "App Monster". This kind of application let user backup their APP to SD card.
  - Move the APP at SD card to USB flash drive. Attach the USB flash drive to the unit.
  - Run FILE BROWSER at HOME SCREEN, and select the application that you want to install.

The APP at smart phone may have problems when installing or executing since it requires GPS, PHONE or TOUCH function. Or it always shows in portrait mode, since the application is just intended to use on phone.

- ※ Some APP requires specially touch function. In this case, mouse should be used. So using mouse is highly recommended when running applications.

### 17.2 Execute Application

The following image will appear when running APP BROWSER at home screen.



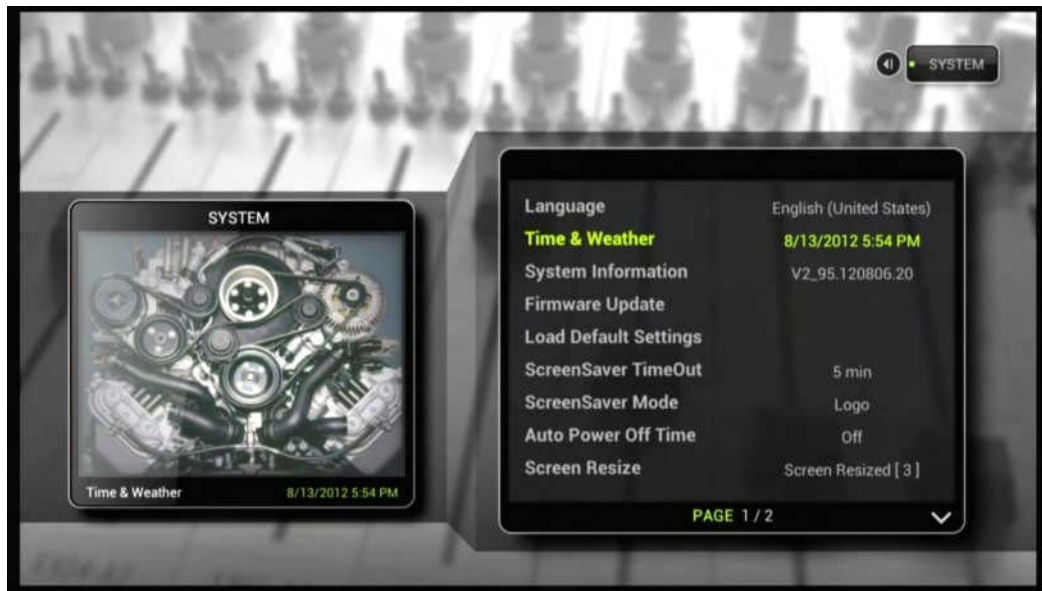
Use arrow buttons to browse the application and press <OK> button to execute it.

## 18 Settings

Various set-ups can be configured at SETTINGS BROWSER.

### 18.1 System

Menu language, date & time, system information, firmware information and update can be set-up at this menu.



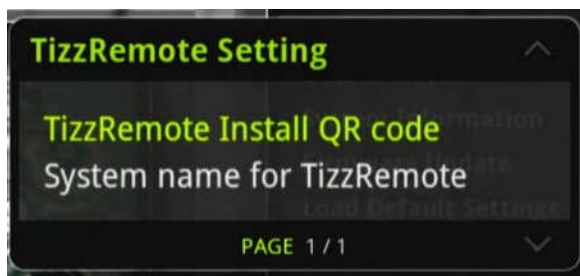
- Language → Select menu language. Press <OK> to bring the pop-up.
- Time & Weather → Set up the time & weather location, manually or automatically.  
Network should be configured and connected to get time & weather location automatically.
- System Information → Show current system information like firmware version.
- Firmware Update → Update the firmware.
- Load Default Settings → Clear the previous settings and get back to the default settings
- Screen Saver Time-Out → Set up the screen saver time-out.
- Screen Saver Mode → Configure the screen saver icon or off the saver.
- Auto Power Off Time → Configure automatic power off time
- Screen Resize → Configure the size of graphic user interface screen.
- TizzRemote Setting → Setup the TizzRemote by QR code and setup the System name for TizzRemote searching.

Next page contains more system settings.





TizzRemote Setting → Setup the TizzRemote by QR code and setup the System name for TizzRemote searching.



The TizzRemote™ is the remote application for TizzBird which can replace keyboard, mouse and keyboard.

There are two methods to install the TizzRemote™. The TizzRemote™ itself is already on the Google Market, so you can directly download it at your smart phone. The other way is using the QR code. If you select the above item at the dialog box, the following dialog box will pop-up.



If you have QR code scanner on your smart phone, then scan this QR code with it, the

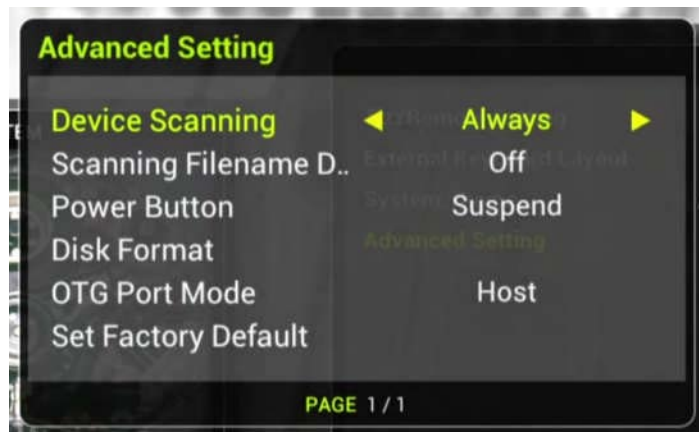
TizzRemote™ APP will be automatically download and installed on your smart phone.

External Kbd Layout → Select between QWERTY or AZERTY type key board.

System Theme → Select launcher between TizzBird theme and Android theme



Advanced Setting → Show advanced (not for casual use) setting.



Device Scanning → Select between scanning device "Always", "New Device Only" and "Never". It will determine the scanner for database will be applied always or new device only or never.

Scanning Filename Display → It will determine display file name during device scanning or not.

Power Button → Select between "Power Off" and "Suspend" when pressing power button. If "Power Off" selected, the system will completely be powered off when POWER button pressed. System will boot up completely from initial stage when next POWER-ON. (COLD-BOOT)

Disk Format → Format the attached hard disk drive.

OTG Port Mode → Select mode of OTG port (the USB port comes with Y-cable). The OTG port can be configured as "Host" (normal USB port) or "UMS" (flash drive can be accessible by PC) or "Debug" (Can be used Android debug mode).

Set Factory Default → Reset the internal data to original one from factory. It will reset the TV output resolution, internal settings and database. It will preserve the application you installed, though.

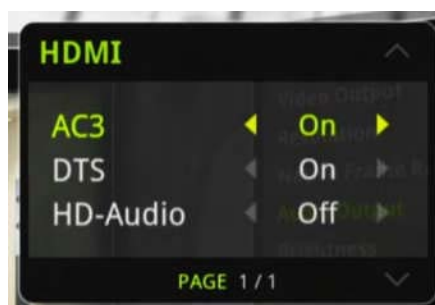
## 18.2 Audio and Visual



- Video Output → Select video output port.
- Resolution → Select resolution of the video output.
- Native Frame Rate → Turn On/Off of original frame rate of the source
- Cinema Original (24p)* → Enable/ Disable cinema frame rate
  - TV Original (1080i 60Hz)* → Enable/ Disable TV frame rate.

- Audio Output → Select audio output port and format
- Analog (PCM) → Audio will output as decoded PCM data
  - Digital → Audio will output as raw data

For HDMI "Digital", the format of audio can be On/Off for each format.



[Configuration for each format]

※ In "Digital (Compressed)" output mode, each format (AC3/ DTS/ AAC/ HD-Audio) can be configured as On/Off independently. It's because the capability of connected audio device is quite different.

- Dynamic Range Control → Controlling dynamic range or not for audio
- Brightness, Contrast, Hue → Control each video parameter value

## 18.3 Movie



- Subtitle Language → Select subtitle language.
- Subtitle Setting → Select size, position, font, color of subtitle. Please refer 10.10.
- Resume → Select resume screen pop-up method. "On" → Automatic resume without asking. "Off" → Always startup without resuming. Pop-up → Pop window up to ask resume or not.
- Instant Skip Interval → Select instant skip interval. Instant skip will occur when pressing <UP> or <DOWN> key at movie playback.
- Sort Type → Select sorting type of movie.
- Order Type → Select ordering type of movie browser.
- Movie Scraper → Select movie scraping data base.

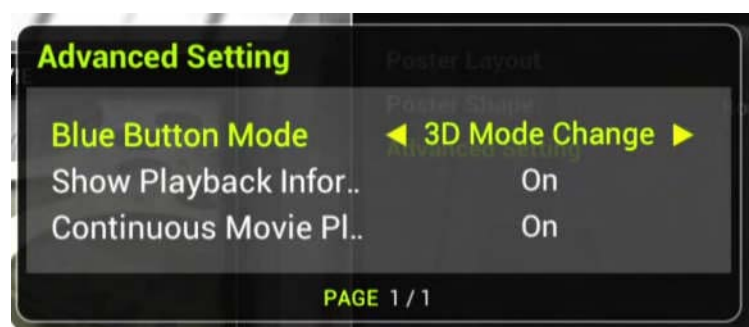
The next page contains more configurations for movie.





Poster layout and Poster Shape → Please refer to chapter 15.

Advanced setting contains more special settings for movie.

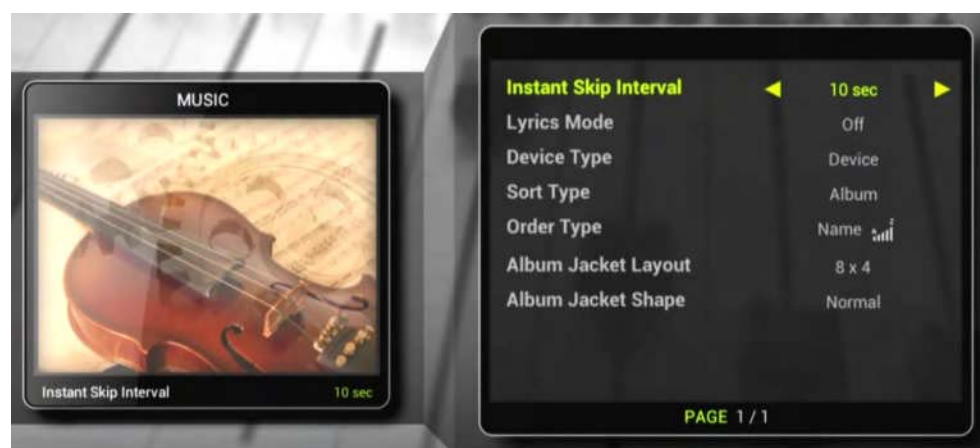


Blue Button Mode → Blue color button on remote can be configured "3D mode change" button or "Repeat mode" button.

Show Playback Information → Turn on/off the information window when movie start-up.

Continuous Movie Playback → Turn on/off successive movie playback, if any.

## 18.4 Music



Instant Skip Interval → Select instant skip interval. Instant skip will occur when pressing <UP> or <DOWN> key at movie playback.

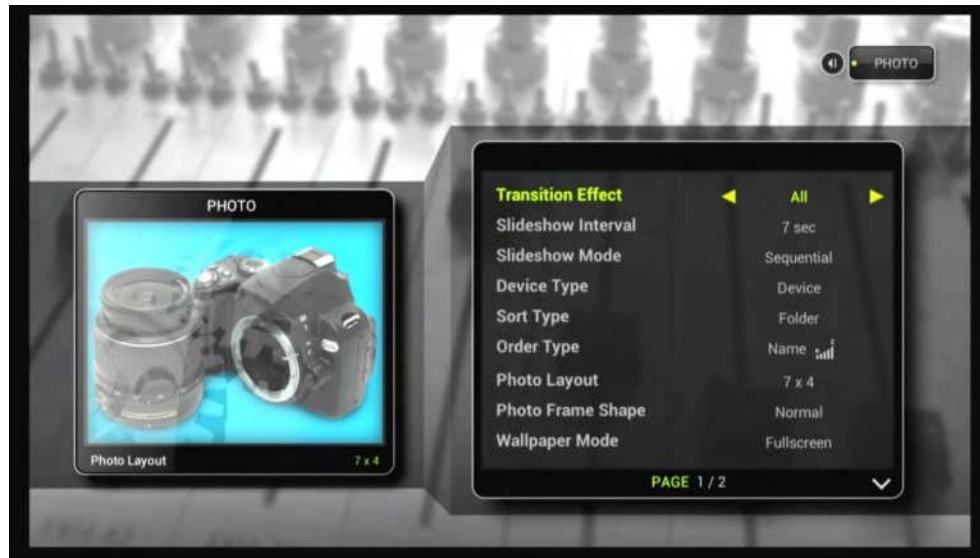
Lyric Mode → Turn on/ off or automatic if lyrics are available

Sort Type → Select sorting type of music.

Order Type → Select ordering type of music browser.

Album Jacket Layout & Shape → Please refer to chapter 15.

## 18.5 Photo



- Transition Effect → Select transition effects of slideshow.
- Slideshow Interval → Select transition interval of slideshow.
- Slideshow Mode → Select showing order of slideshow.
- Sort Type → Select sorting type of photos.
- Order Type → Select ordering type of photos.
- Photo Frame Layout & Shape → Please refer to chapter 15.
- Wallpaper Mode → Keep the aspect ratio or stretching to "Fullscreen"
- Restore wallpaper → Restore default wallpaper if background was changed.



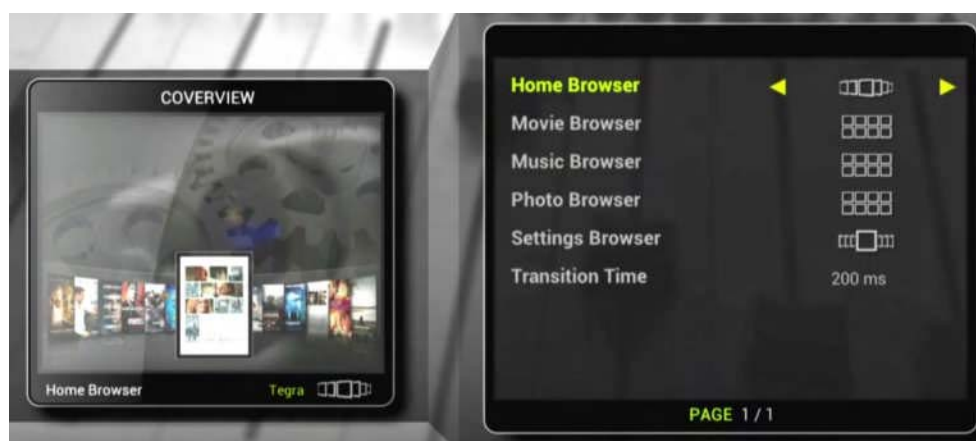
Transition Effect

## 18.6 Network



- Wi-Fi Connection → Turn On/Off the Wi-Fi connection
- Wi-Fi Setting → Select Wi-Fi Access Point and configure the SSID and password
- Network Server ... → Please see chapter 20 and 20.1.5 for configuration
- DLNA → Turn On/Off the DLNA. See chapter 21 for usage of DLNA.
- YouTube Cache Size → Determine the cache size for YouTube real-time streaming.
- Network Information → Show current connected network information.

## 18.7 Cover-View



This page only shows the current setting of Cover-View style of each browser. You cannot change the style in this model.

## 19 Connecting Network Server or NAS

This device provides powerful network browsing and connection capability from Rev 1.12 firmware. This includes multiple mountings of network drives for both SAMBA and NFS. The high performance NFS server software for PC, the **TizzNFS** will be also provided thru TizzBird WEB-site

### 19.1 Network connection using NFS

The NFS (Network File System) is a simple but powerful networking file system originally created by Sun Microsystems™. The NFS enables high performance file sharing between network devices, so it's most suitable for multimedia file playback via network.


The following section explains how to connect the shared PC folders using NFS server application or NAS (Network Attached Storage) which runs NFS server.

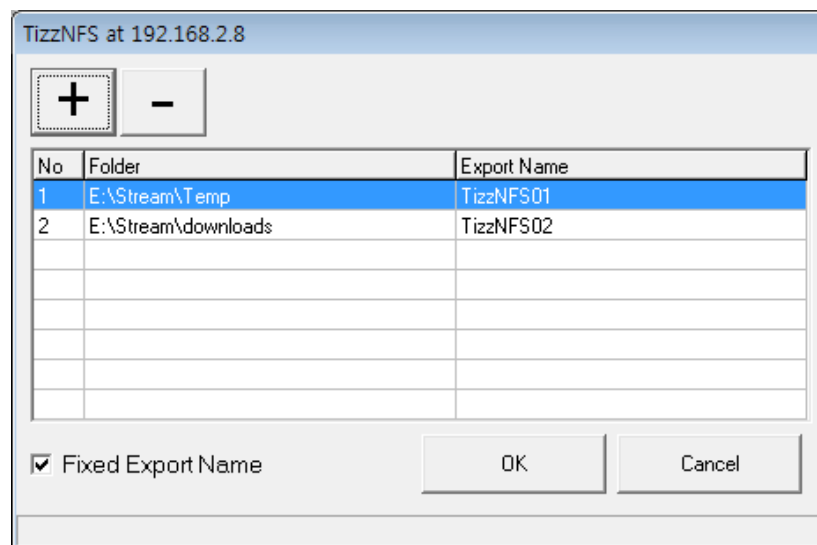
#### 19.1.1 Downloading TizzNFS Server

Please download the "**TizzNFS**" server at Internet at the PC. Please visit our WEB-site (<http://www.tizzbird.com>) to download the TizzNFS program. Please install it after downloading it. The TizzNFS has following features.

- Runs on Windows™ XP/ Vista/ 7 (both 32 bit and 64bit)
- Simple and intuitive user interface.
- Enables sharing multiple folders thru EXPORT function.
- Reliable and high performance operation
- Simple or complex EXPORT name can be selectable.
- Supports NFS2 and NFS3 protocol completely.


#### 19.1.2 Executing TizzNFS Server & Configuration

Execute the TizzNFS. The TizzNFS icon  will appear on Task Bar. Click the icon and select "Settings" menu item.








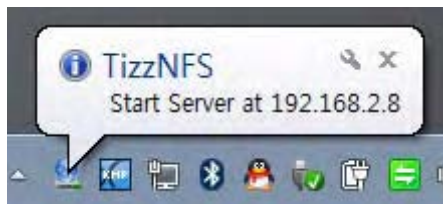
Please press  button to share the folder. The folder selecting dialog box will appear so the wanted folder can be selected.

Please repeat this procedure to select all other desirable folders to share. Please press



 button to unselect the folder, after clicking the row of unwanted folder at the dialog box.

The balloon help will pop-up when pressing OK button like below picture.



The TizzNFS will automatically run whenever log-on the PC, so shared folders will be maintained.

### 19.1.3 Downloading other NFS Server

Please download the "freeNFS" or "Allegro" NFS server at Internet at the PC. The "freeNFS" and "Allegro" NFS server was confirmed by TizzBird.

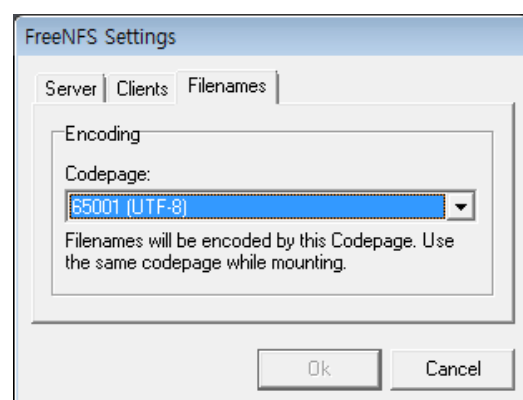
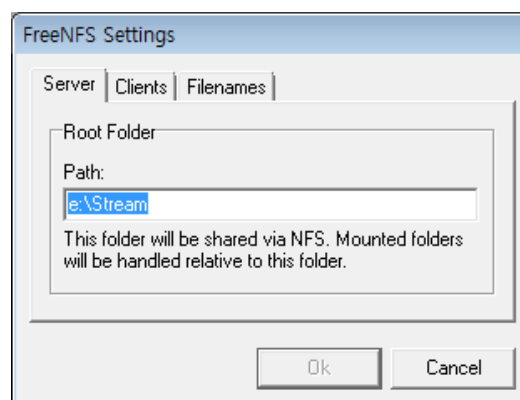
The "freeNFS" software can be downloadable at following URL:

<http://sourceforge.net/projects/freenfs/files/FreeNFS.exe/download>

FreeNFS can be executed without specific installation.

### 19.1.4 Executing freeNFS Server & Configuration

Execute the freeNFS. The freeNFS icon will appear on Task Bar. Right mouse click the icon and select "Settings" menu item.

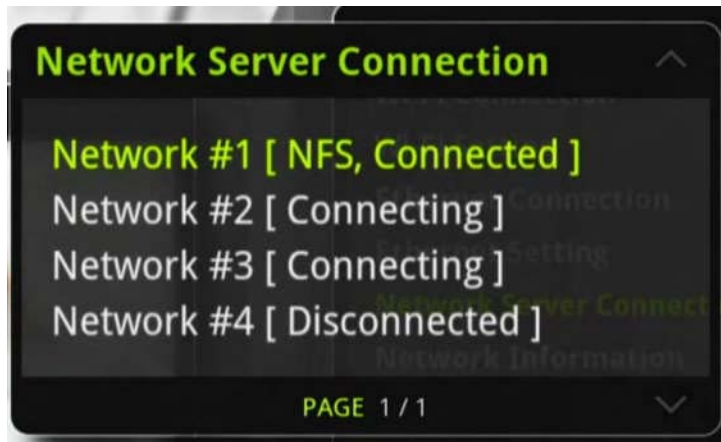


Please enter shared folder name at "Path" of "Server" Tab like above picture.

Please make sure that selecting "65001 (UTF-8)" at the "Codepage" of "Filenames" Tab.

### 19.1.5 Connecting NFS Server at Device

Select <Settings Browser → Network → Network Server Connection". This will bring the following dialog box.



Up to 4 network servers can be connected at this version, and the number of connectable server will be increased at next version.

Please select one of the network drive number then press OK. This will bring the following dialog box.



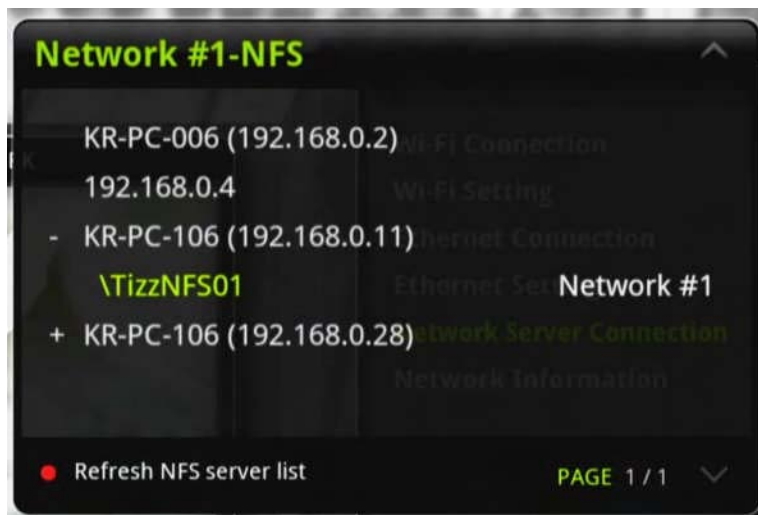
Please choose NFS. This will start the SERVER BROWSING dialog box and start browsing of available NFS server at the local network.



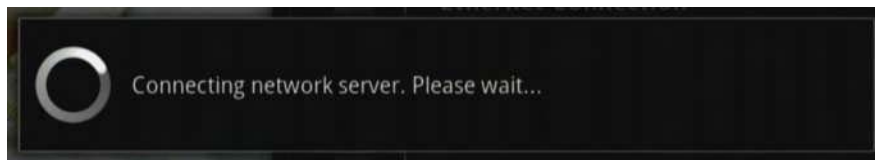
The available NFS servers will appear with names or IP addresses. The “+” sign on the left side of server name means it has exported folders. There can be no “+” sign server which is not exporting the EXPORT NAMES.

If PC runs Windows OS, the PC name can also appear like above picture. If the wanted server list is not appeared, please try RED button on remote to refresh the NFS server list.

Please select one of the server then press OK, the exported folders will appear like below picture. Please select one of those then press OK to connect.



The following dialog will appear shortly and connection will be made.



**Caution:**

Please use RealTEK RTL8188 Wi-Fi module for NFS thru Wi-Fi. The Ralink RT3070 Wi-Fi driver has some problem with NFS connection. The NFS + Ethernet configuration also does not have problem.

## 19.2 Network Connection using Samba

The following section explains how to connect the shared PC folders or NAS (Network Attached Storage) which runs Samba Server.

### 19.2.1 Activating PC Share

- Click right mouse button on the folder which will be shared. Select "Property" then "Sharing" TAB on the dialog box.

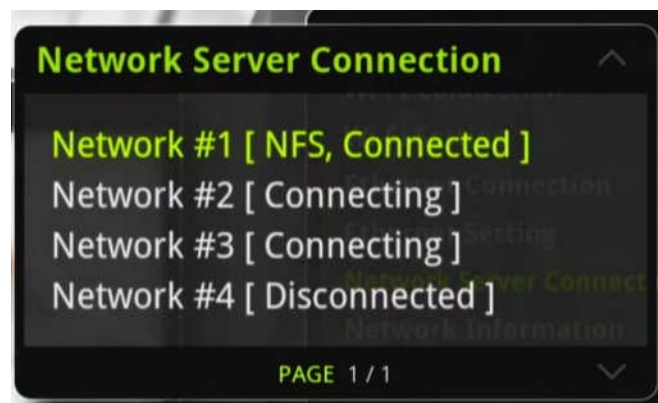


- Select "Share this folder" button on the dialog box
- The shared folder can be notified at file explorer, since the shared icon will appear on the left side of folder icon.



### 19.2.2 Connecting Samba Server at Device

Select <Settings Browser → Network → Network Server Connection >



Select "Samba" at dialog box.



This will bring the SAMBA BROWSING dialog box like below. If the wanted SAMBA SERVER name is not appeared, please press RED button on remote.

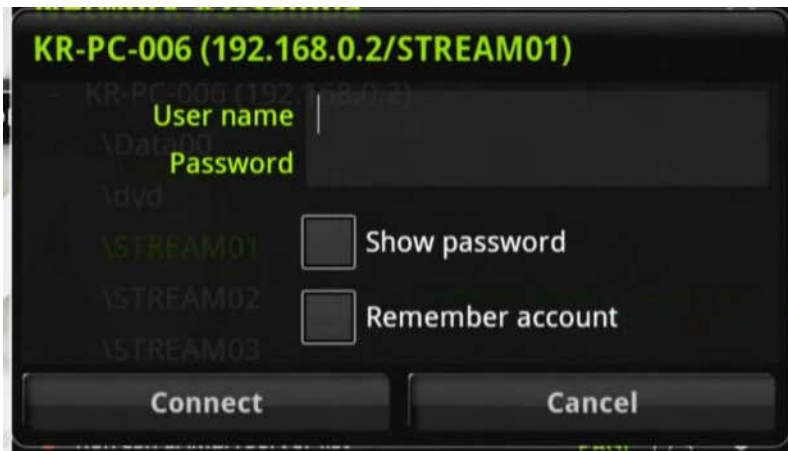


The SAMBA server list will appear according to the PC-names or IP address. The "+" sign means it has several shared folders. Press OK button to unfold the server folder list, then select one of the folder to connect.





If the selected folder requires ACCESS RIGHT to connect it, the following dialog box will pop-up to enter the log-in account information.



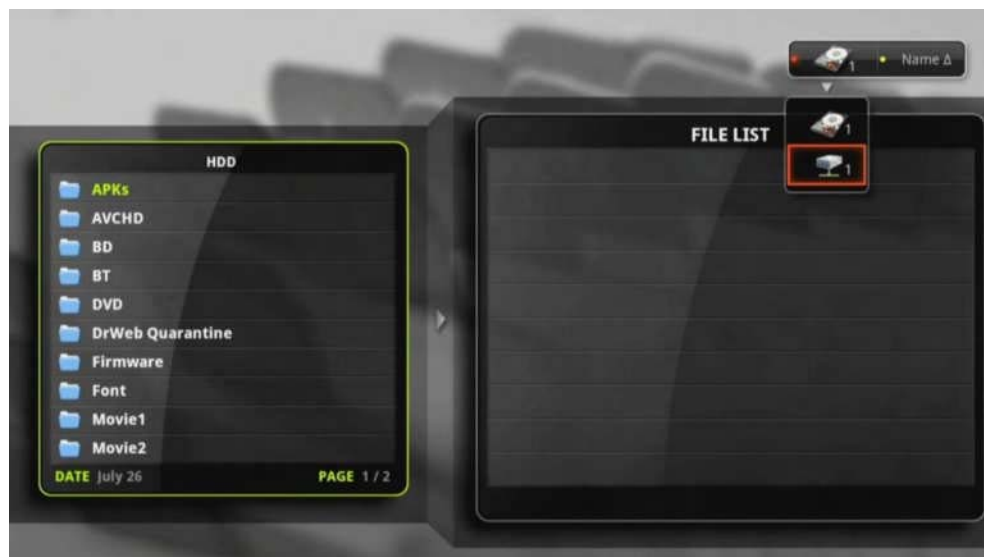
Input the "User name" and "Password" using virtual keyboard. Please check "Remember account" checkbox to by-pass this log-in procedure at next connection.

The connection will be made after pressing "Connect" button.

## 19.3 Accessing Network Drive at File/ Media Browser

The shared folder connected thru can be accessible at <Movie/ Music/ Photo/ File Browser >. The below picture shows the selecting the NETWORK DRIVE at <File Browser>. Press <RED color> button on remote at File Browser to select the network drive. Select the network icon like following picture.

The shared folder will appeared and the files and folders can be browsed or playback.



## 20 Using DLNA

Tizzbird fully implements several DLNA stacks includes DMP (Digital Media Player), DMS (Digital Media Server) and DMR (Digital Media Renderer). It can be used very flexibly several ways.

### DMP (Digital Media Player)

TizzBird can browse other DMS (Digital Media Server) servers including DLNA enabled PC, Smart Phone and NAS, and be able to playback the contents on the designated server.

### DMR (Digital Media Renderer)

TizzBird can render (decode & do presentation) the contents which were designated by DMC (Digital Media Controller). For example, SMART PHONE can be used for browsing and controlling the contents on the DMS and designate the contents should playback on TizzBird output. So you can see the movie, photo and listen to the music on the SMART PHONE or DLNA server.

The beauty of this DMR is browsing can be done intuitively by smart phone, and output may appear on big screen TV. So user can enjoy the contents on several screens (so called N-screen) by designating the rendering output to any DMR device.

### DMS (Digital Media Server)

TizzBird can be a DLNA server, so other DLNA device including SMART PHONE can browse and start playback the contents on the TizzBird.

So combined overall DLNA stacks, the mutual contents sharing between TizzBird and other device (TAB, SMART PHONE, PC) is quite easy and intuitive.

The **most important DLNA stack here can be DMR**. Because SMART PHONE or TABLET can be used as controller (DMC) and playback can be done on TizzBird. So users can easily browse contents on server or their phones, and see the contents on BIG SCREEN TV.

## 20.1 Preparation for DMR

- ✓ Preparing TizzBird & Access-Point
  - Prepare TizzBird F12 or N1 for demonstrating DMR with Rev 2.90 or later firmware. Connect the Wi-Fi or Ethernet with prepared Access-Point.
  - Enable the DLNA at "Settings Browser → Network → DLNA"
  
- ✓ Preparing Smart Phone.
  - Prepare Android Smart Phone (Gingerbread or later) or iPhone and connect the same Access-Point as Tizzbird connected.
  - Download the **iMediaShare** or **Twonky** app from the market.
  
- ✓ Preparing DLNA Server (Optional)

If you have a plan to browse or playback DMS using PC, please prepare like this.

- Download the latest Windows Media Player for DLNA server.
- Or download the Twonky Server on PC for DLNA server.

## 20.2 Sending Smartphone's Contents - iMediaShare APP

iMediaShare is a good example of DMC, DMS and connects contents to DMR. It has several on-line-site DLNA server examples, which are very good to demonstrate, and some of them are in High-Definition. iMediaShare is also available on iPhone.

- ✓ Execute the iMediaShare APP

The iMediaShare startup screen will come up like below.

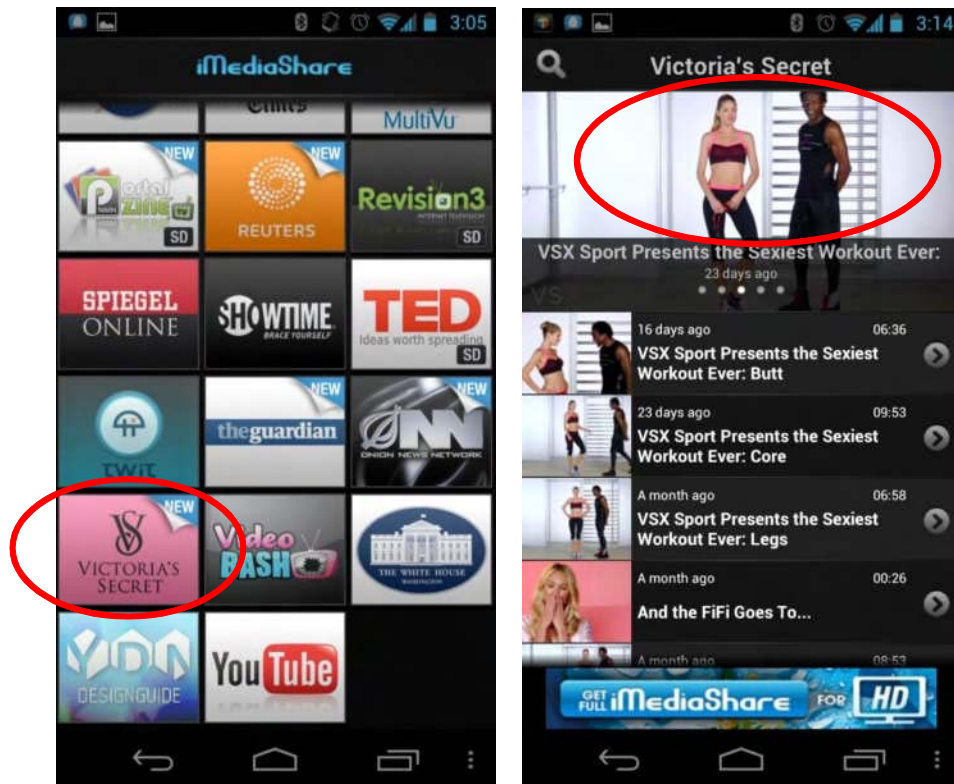


- ✓ Select the online site example

Select one of the on-line site examples. Below screen shows some candidates.

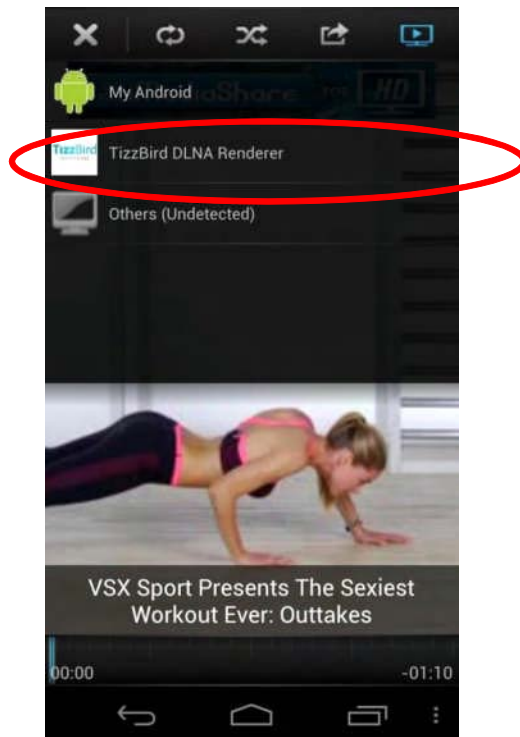


"My Photos", "My Music", "My Videos" show local contents on your phones. Below screen shows the "Victoria's Secret" on-line DLNA server. Click one of the contents.



✓ Select the final renderer.

If you click one of the contents, and TizzBird settings are correct, the "RENDERER" selection pane will pop-up. Select **"TizzBird DLNA Renderer"**.

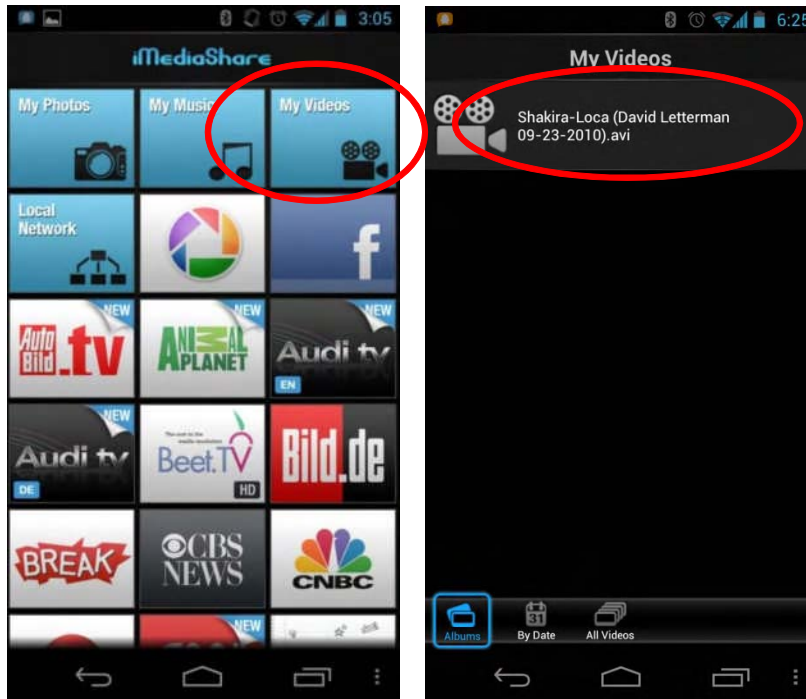


✓ Demonstrating Smart Phone local contents to Tizzbird



→ Select the contents on the SMART PHONE.

Select "My Videos" on the menu. Then following screen will pop-up

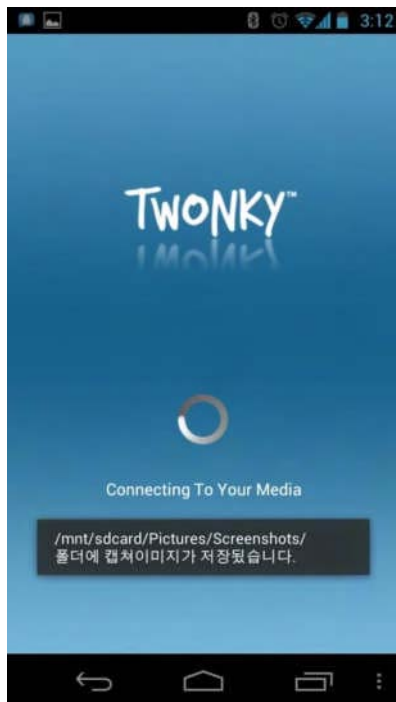


Select one of the movies you want to playback and Tizzbird will start playback. It's so-called DMR (Digital Media Renderer).

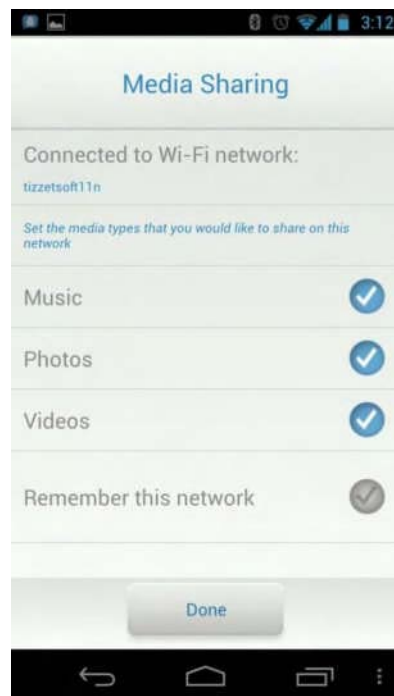
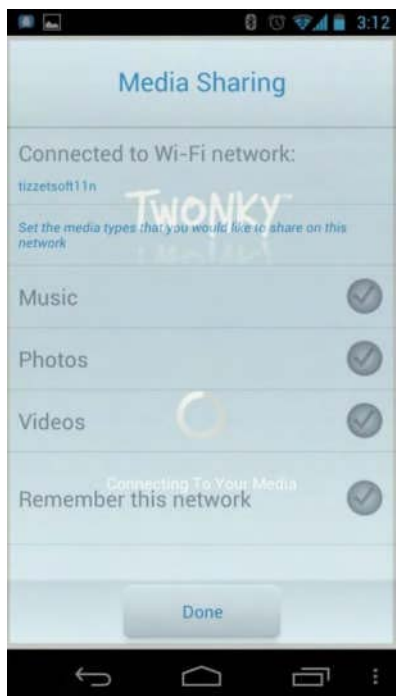
## 20.3 Sending Smartphone's Contents - TWONKY APP

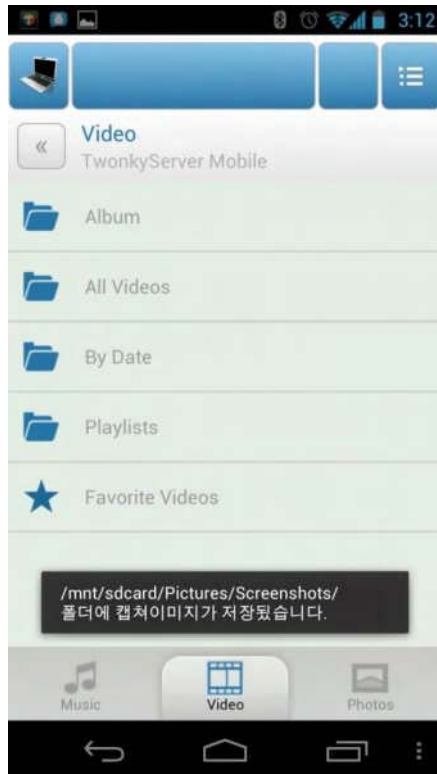
Twonky is a powerful DLNA app which let you browse overall DLNA server on your local network. It also provides playback controller which is very stable.

- ✓ Run Twonky

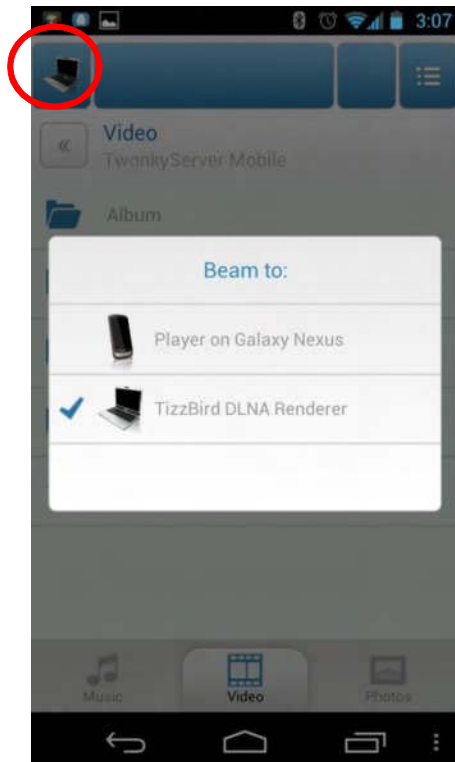


- ✓ Select categories of contents that you want to playback. Then select one of the contents





✓ Designate the renderer. Then the Tizzbird will start playback.



## 21 Firmware Upgrade

### 21.1 Online Upgrade (O.T.A – Over the Air Upgrade)

TizzBird will connect the firmware update server periodically (once a week) and pop-up upgrade prompt window automatically, if new firmware is available. If TizzBird is connected to the network, the upgrade can be performed as following.

- 1) Prompt the firmware if new version is available.
- 2) Select <SETTING BROWSER> → <SYSTEM> → <FIRMWARE UPDATE>
- 3) Setting browser will can the new firmware available on network and pop-up the window.
- 4) Press <OK> to start upgrade.



### 21.2 Local Upgrade

Separately downloaded firmware (thru PC) can be upgraded like below. The upgrade will not take more than 1 minute.

#### 21.2.1 Upgrade at Settings Screen

Copy or move the latest firmware to the root folder of USB flash or HDD drive.

- Connect the drive to USB port of the unit.
- Select <SETTING BROWSER> → <SYSTEM> → <FIRMWARE UPDATE>.
- SETTINGS BROWSER will scan the new firmware automatically and pop-up the window.
- Press <OK> button to start upgrade.

### 21.2.2 Upgrade at File Browser

Copy or move the latest firmware to the root folder of USB flash or HDD drive.

- Connect the drive to USB port of the unit.
- Select <FILE BROWSER> at HOME SCREEN. .
- Browse the firmware file and press <OK> to start upgrade.



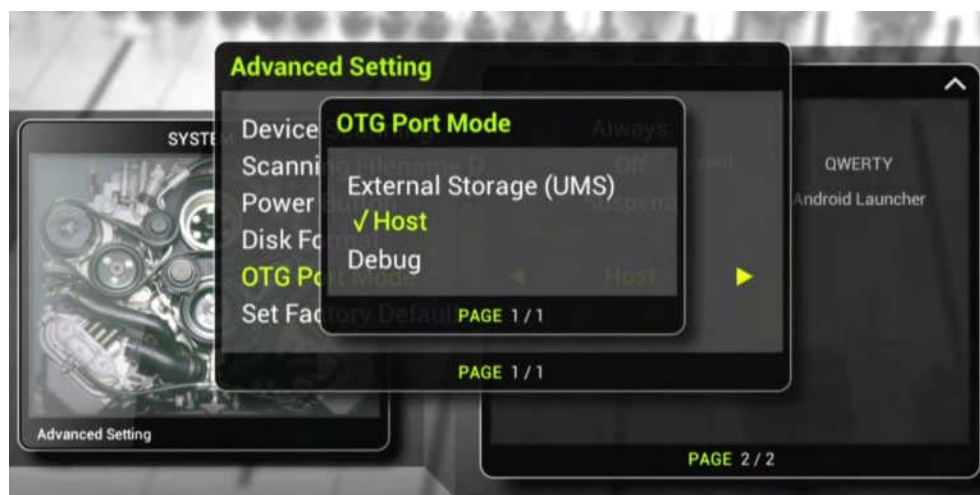


## 22 Using N1 as a Mass Storage

TizzBird N1 contains T-flash memory which is mainly used for Android system image and working area. Some part of T-flash area is assigned to SD-card area which is used by Android system as an external memory. This SD-card area can be accessible by PC as a USB mass storage device (UMS). So if you have 8G/ 16G/ 32GB version of TizzBird N1, you can use more extra SD card area for storing various multimedia contents.

Here's the procedure to access. Before do that, please **prepare normal micro-USB cable** to connect PC. The micro-USB cable is normal type that can connect SMART PHONE with PC USB port.

- 1) Connect N1 to TV and turn it on.
- 2) Select <SETTING BROWSER> → <SYSTSEM> → Page2 <Advanced Setting> → OTG Port Mode
- 3) Select **"External Storage (UMS)" to connect PC.**



- 4) Turn off the power of N1.
- 5) Connect PC with micro-USB cable you prepared.
- 6) The N1 will power-on and work as a MASS STORAGE DEVICE. You can freely access the N1's storage area including reading, writing & erasing.
- 7) After done, please **restore the <OTG Port Mode> to "Host"** when connect the N1 back to TV. Otherwise, the SD card area will not be accessible by Android system of N1.