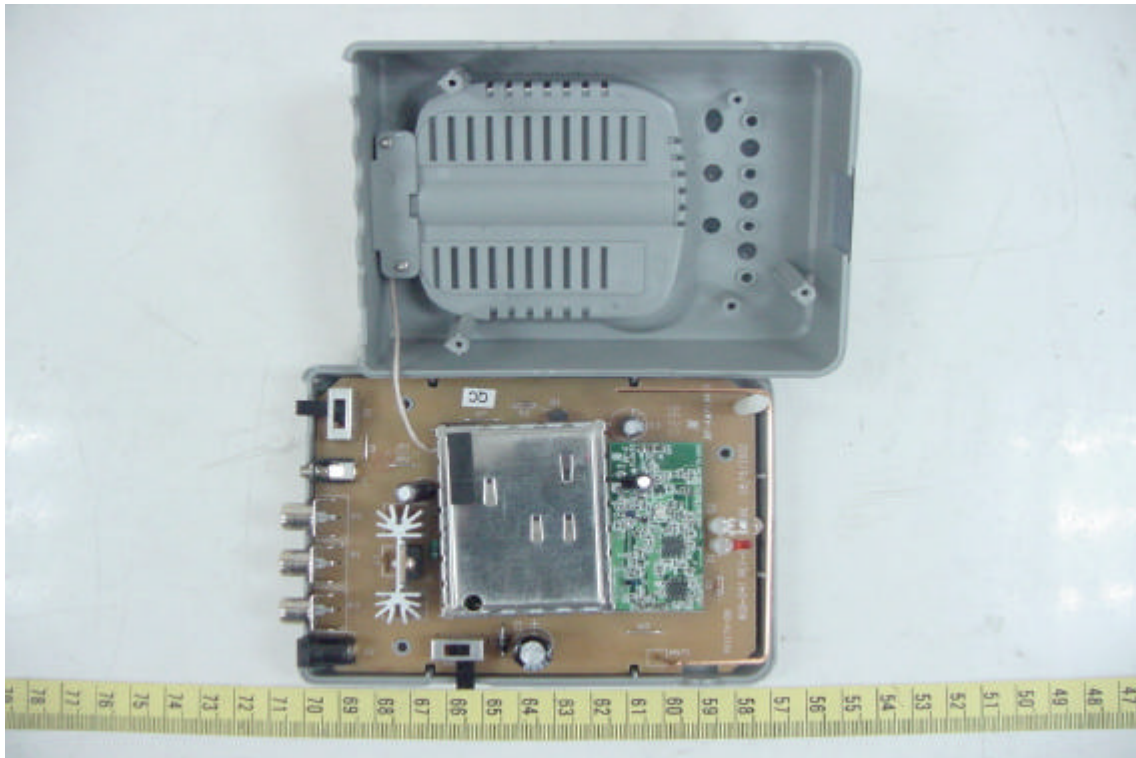


## CONSTRUCTED PHOTOS of EUT

### 8. Internal View of Transmitter

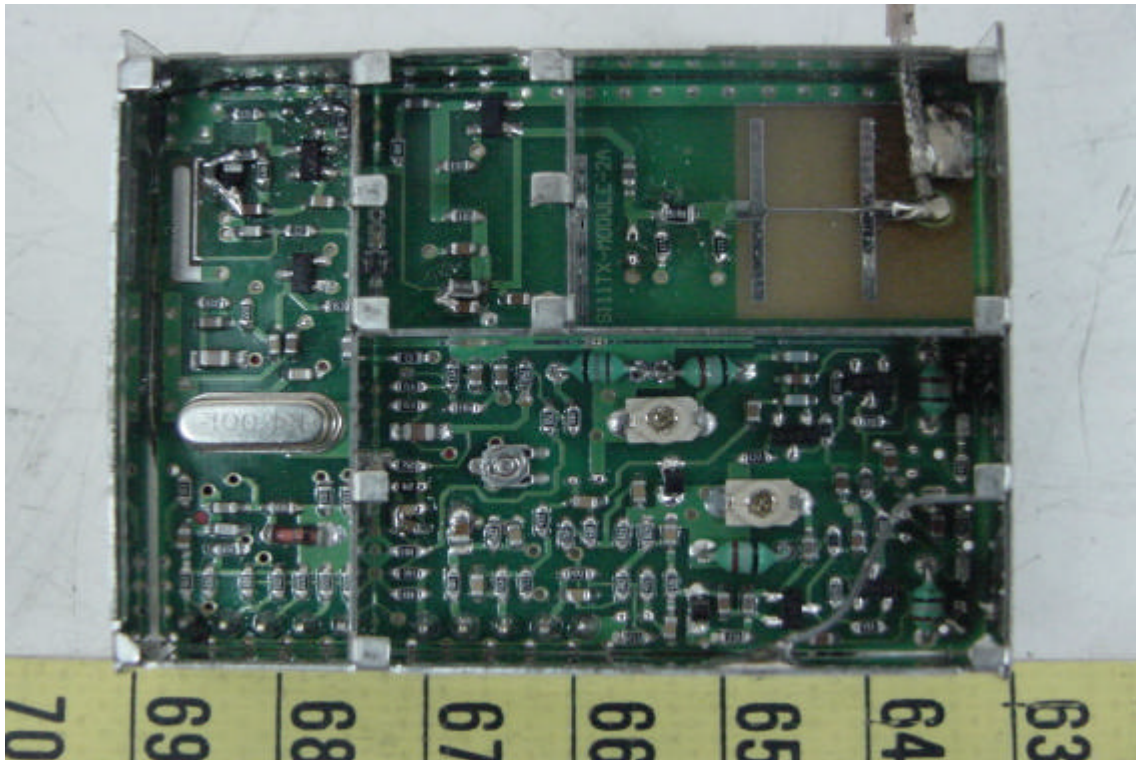


### 9. Internal View of Transmitter

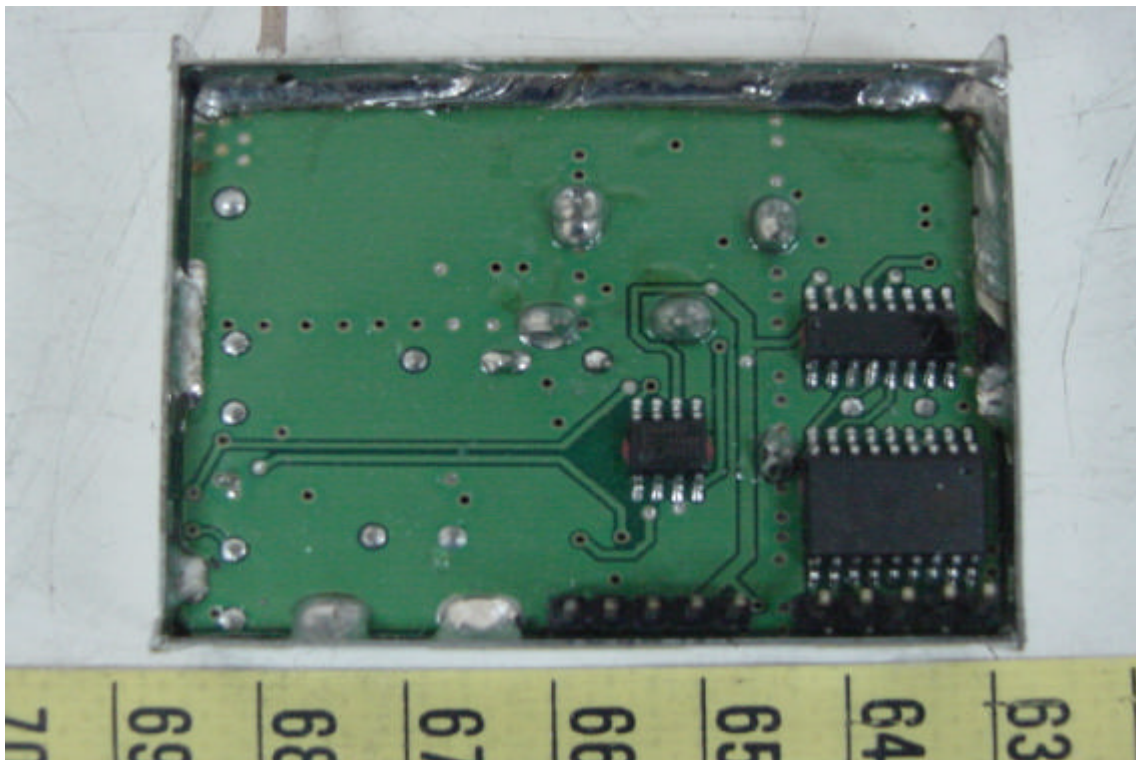


## CONSTRUCTED PHOTOS of EUT

### 10. Component View of Transmitter



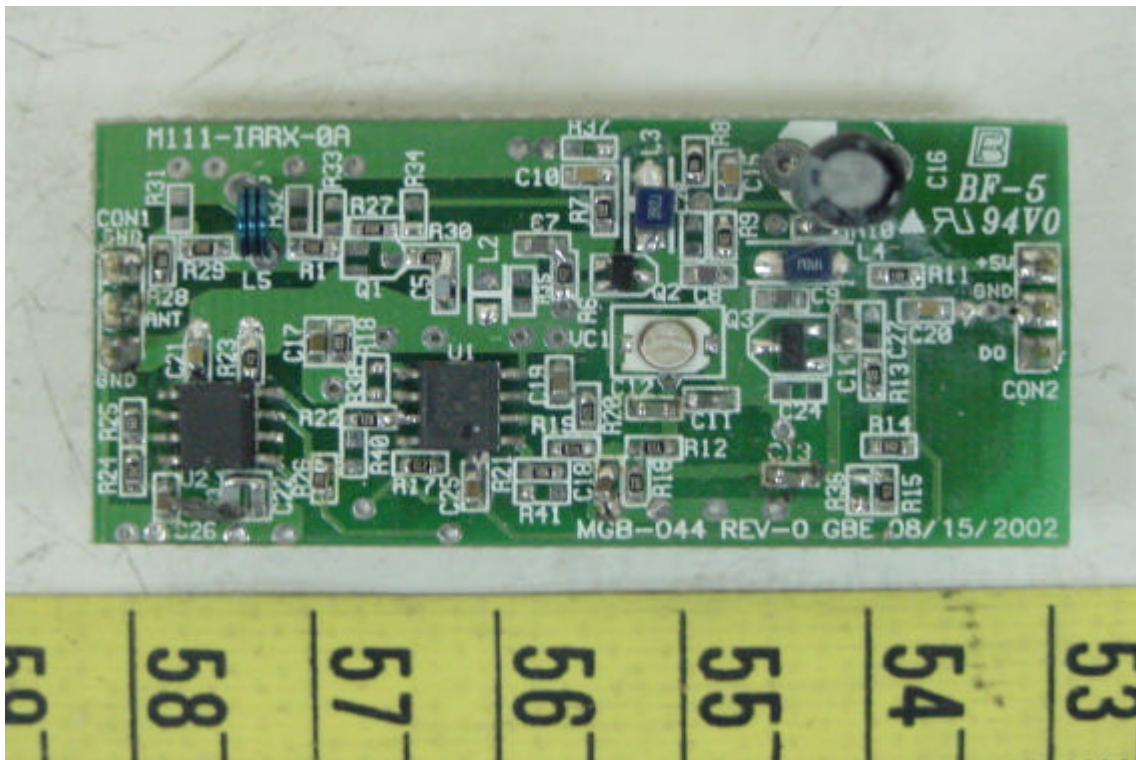
### 11. Solder View of Main PCB (Transmitter)



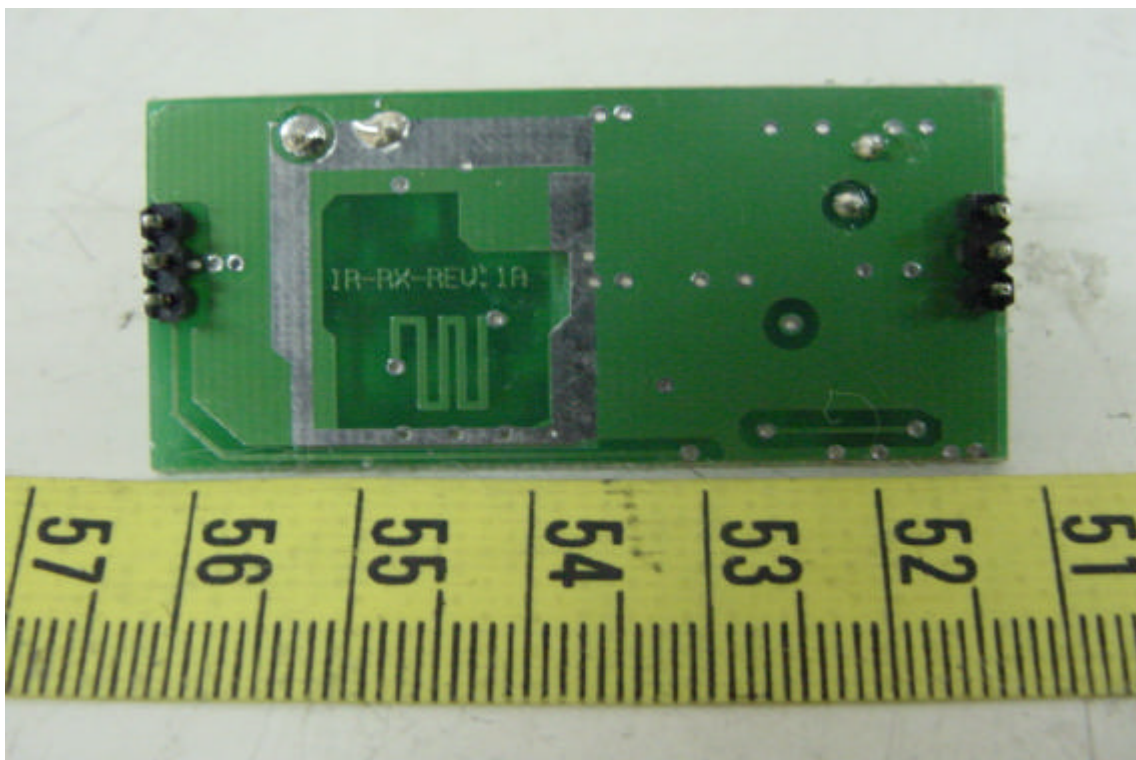


## CONSTRUCTED PHOTOS of EUT

### 12. Component View of Main PCB (Transmitter)

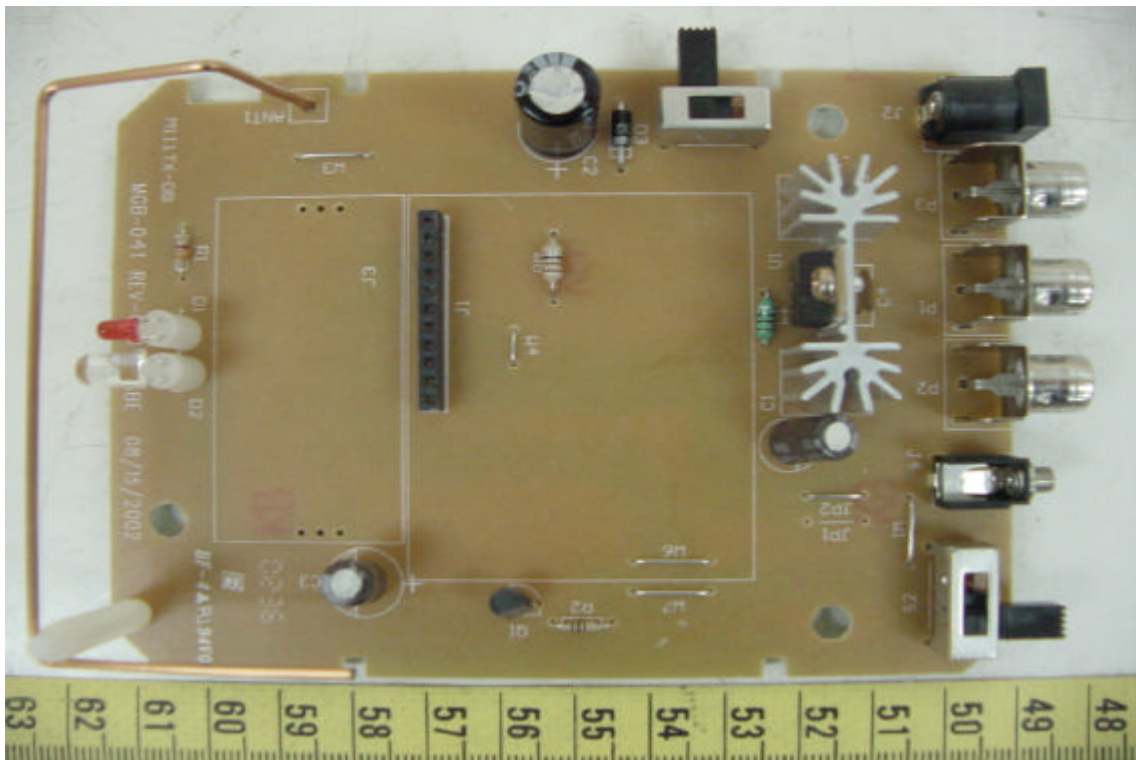


### 13. Solder View of Main PCB (Transmitter)

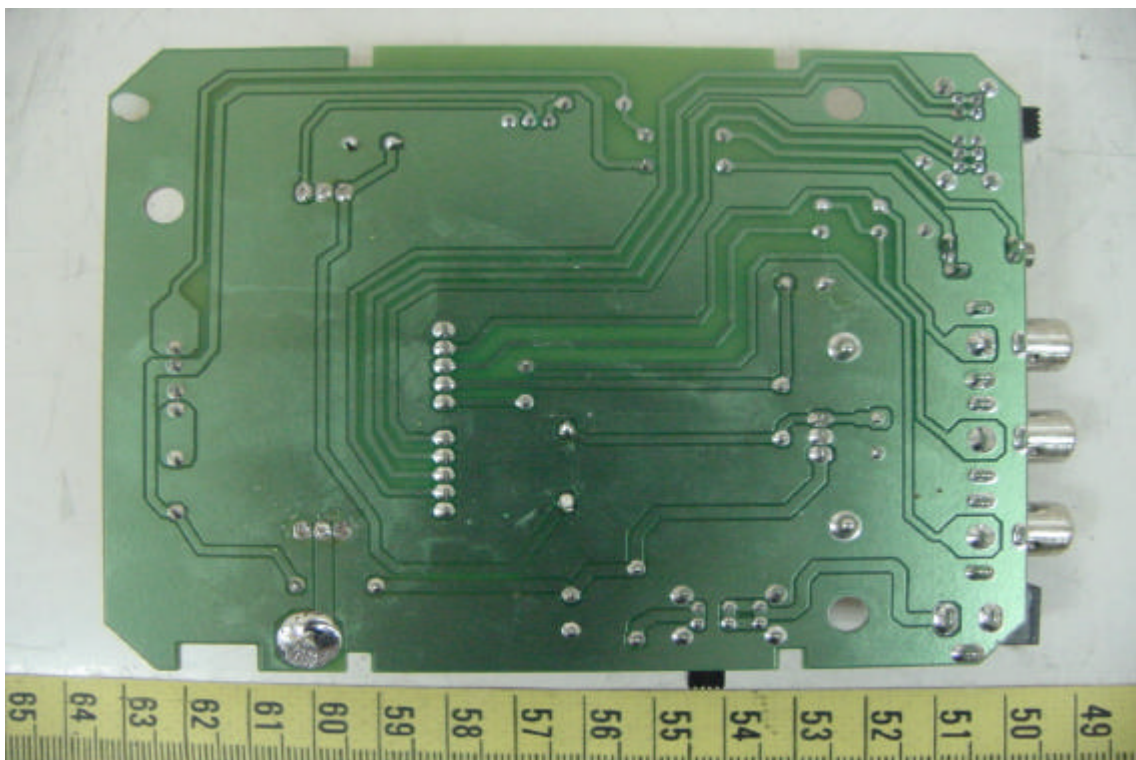


## CONSTRUCTED PHOTOS of EUT

### 14. Component View of Main PCB (Transmitter)



### 15. Solder View of Main PCB (Transmitter)



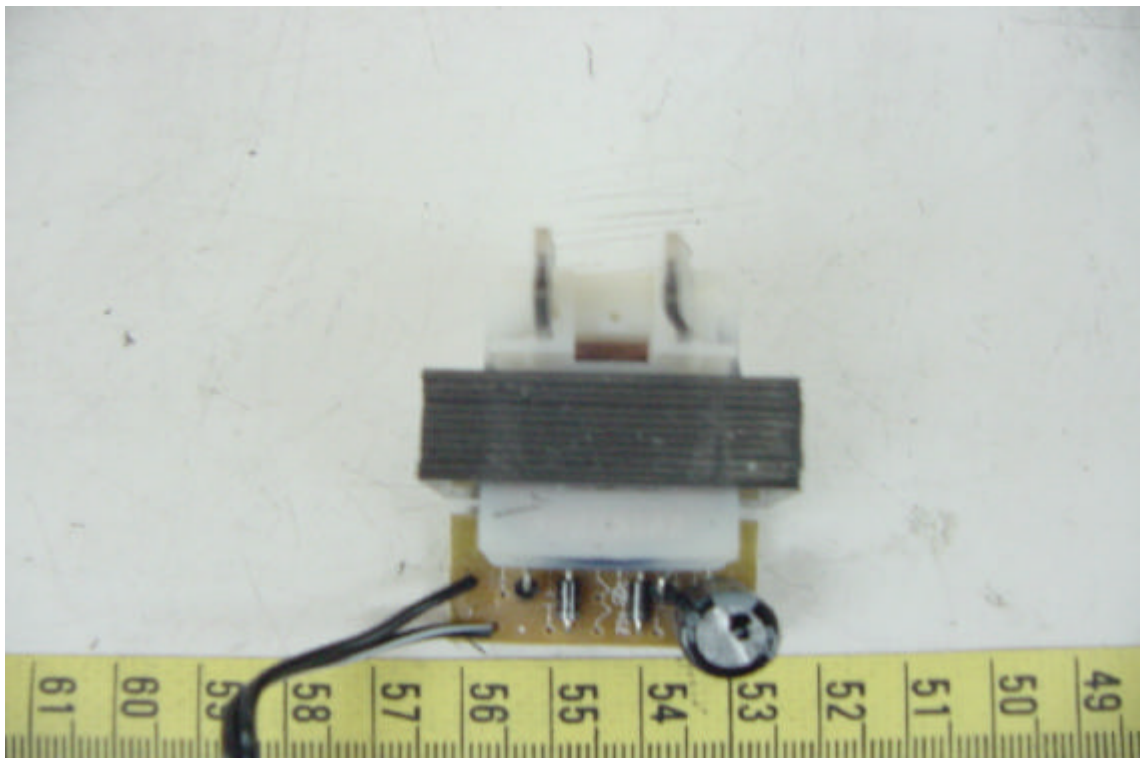


## CONSTRUCTED PHOTOS of EUT

### 18. Internal View of Adaptor

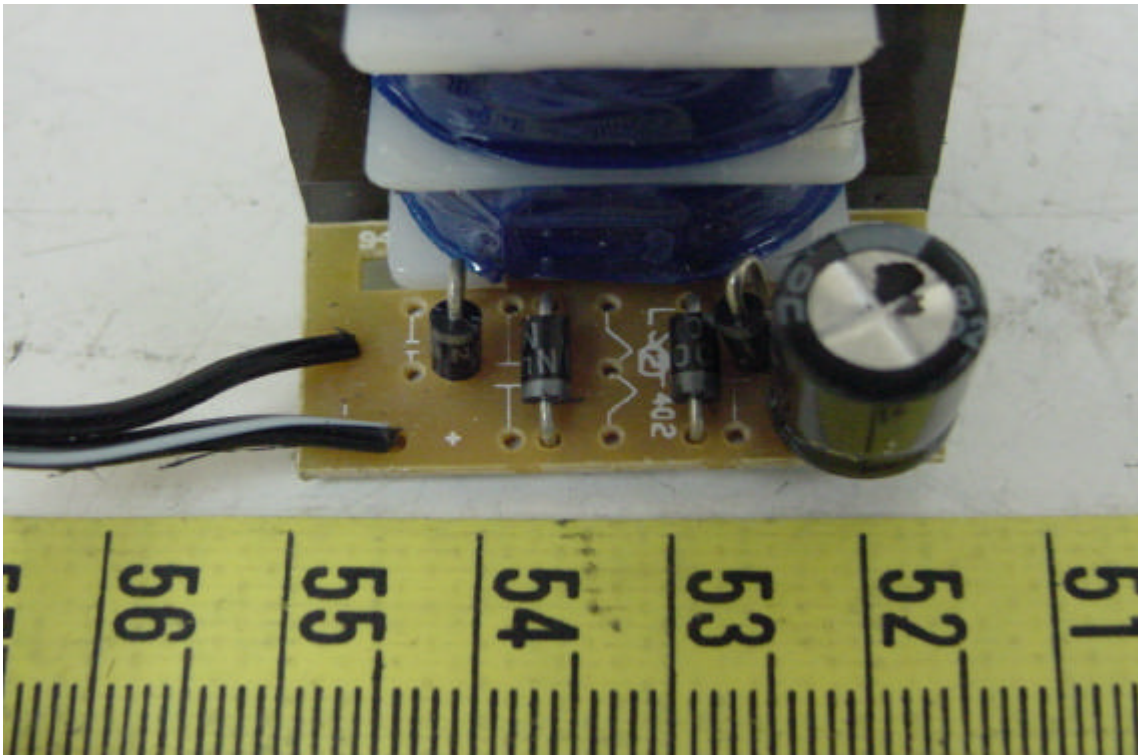


### 19. Component View of Adaptor's PCB



## CONSTRUCTED PHOTOS of EUT

20. Component View of Adaptor's PCB



21. Solder View of Adaptor's PCB

