

### 3.2 AF Board

The AF (Audio Frequency) board holds the following systems:

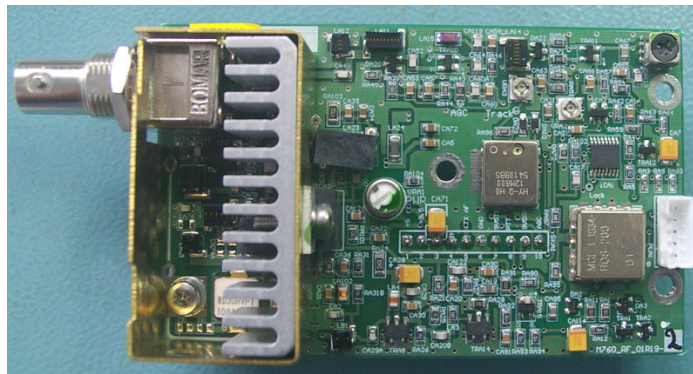
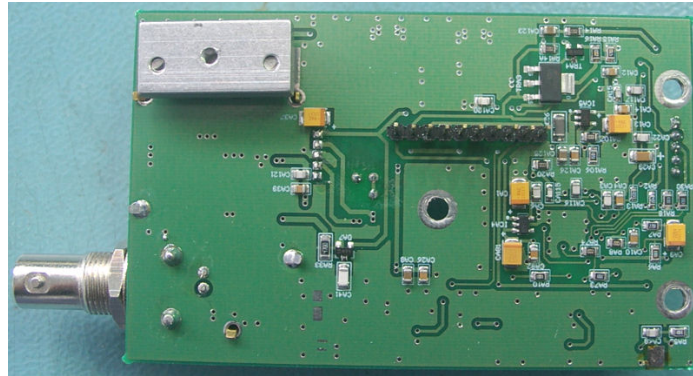
- IF filter, three stage strip, & Detector
- AGC
- Mute
- Microphone input and audio compression
- PTT switching
- Audio PA
- DB15 electrical connector
- RS232 line driver
- 9.5V regulator
- 5V regulator



### 3.3 RF Board

The RF (Radio Frequency) board hold the following systems:

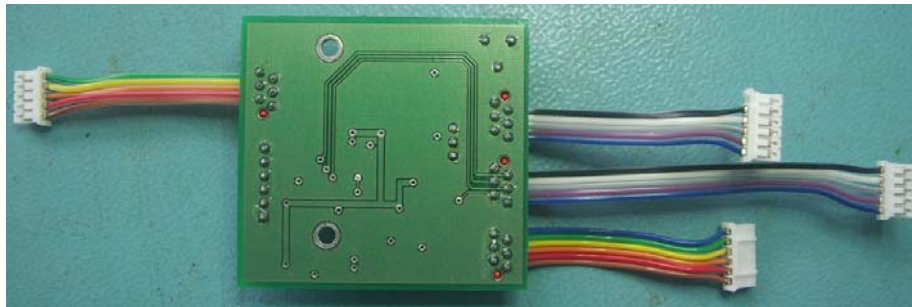
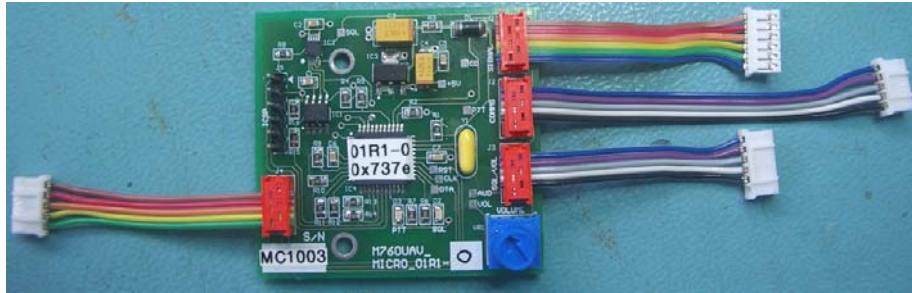
- TCXO
- PLL/VCO
- Receiver front end & LP filter
- Transmitter & PA
- Modulator



### 3.4 Micro Board

The Micro Board holds the following systems:

- Microcontroller
- Squelch adjust
- Headphone audio adjust
- 5V regulator



### 3.5 Chassis

The M760REM has a sheet aluminium chassis with a divider plate in the centre, to which the AF and RF boards are fixed. The MICRO board is fixed to the front of the divider plate. Harnessing from the MICRO board connects the AF and RF boards.

The chassis is completed by a base plate, front plate, back plate, and top cover. The top cover features mounting flanges, to facilitate installation.

