

## SAR Compliance Test Report

<b>Test report no.:</b>	WR1191.001_v1_A	<b>Date of report:</b>	2007-03-05
<b>Template version:</b>	5.0	<b>Number of pages:</b>	32
<b>Testing laboratory:</b>	TCC San Diego 12278 Scripps Summit Drive SAN DIEGO CA. 92131 USA Tel. +1 858 831 5000 Fax. +1 858 831 6500	<b>Client:</b>	Nokia Corporation Nokia Tower Pacific Century Place 2A Gong Ti Bei Lu Chaoyang District 100027 BEIJING, PRC Tel. +86 10 65392828 Fax. +86 10 65393838
<b>Responsible test engineer:</b>	Jose Gomez	<b>Product contact person:</b>	James Bian
<b>Measurements made by:</b>	Jose Gomez		
<b>Tested device:</b>	RM-307		
<b>FCC ID:</b>	QMNRM-307	<b>IC:</b>	-
<b>Supplement reports:</b>	WR1191.001_v1_B		
<b>Testing has been carried out in accordance with:</b>	<b>47CFR §2.1093</b> Radiofrequency Radiation Exposure Evaluation: Portable Devices <b>FCC OET Bulletin 65 (Edition 97-01), Supplement C (Edition 01-01)</b> Evaluating Compliance with FCC Guidelines for Human Exposure to Radiofrequency Electromagnetic Fields <b>RSS-102</b> Evaluation Procedure for Mobile and Portable Radio Transmitters with Respect to Health Canada's Safety Code 6 for Exposure of Humans to Radio Frequency Fields <b>IEEE 1528 - 2003</b> IEEE Recommended Practice for Determining the Peak Spatial-Average Specific Absorption Rate (SAR) in the Human Head from Wireless Communications Devices: Measurement Technique		
<b>Documentation:</b>	The documentation of the testing performed on the tested devices is archived for 15 years at TCC San Diego.		
<b>Test results:</b>	<b>The tested device complies with the requirements in respect of all parameters subject to the test.</b> The test results and statements relate only to the items tested. The test report shall not be reproduced except in full, without written approval of the laboratory.		

**Date and signatures:**  **2007-03-05**

For the contents:

Jose Gomez  
Certification Test Engineer

## CONTENTS

<b>1. SUMMARY OF SAR TEST REPORT .....</b>	<b>4</b>
1.1 TEST DETAILS.....	4
1.2 MAXIMUM RESULTS.....	4
1.2.1 Head Configuration.....	4
1.2.2 Body Worn Configuration .....	4
1.2.3 Maximum Drift .....	4
1.2.4 Measurement Uncertainty.....	5
<b>2. DESCRIPTION OF THE DEVICE UNDER TEST.....</b>	<b>5</b>
2.1 DESCRIPTION OF THE ANTENNA.....	5
<b>3. TEST CONDITIONS .....</b>	<b>5</b>
3.1 TEMPERATURE AND HUMIDITY.....	5
3.2 TEST SIGNAL, FREQUENCIES AND OUTPUT POWER.....	5
<b>4. DESCRIPTION OF THE TEST EQUIPMENT .....</b>	<b>6</b>
4.1 MEASUREMENT SYSTEM AND COMPONENTS .....	6
4.1.1 Isotropic E-field Probe Type ET3DV6 .....	7
4.2 PHANTOMS .....	7
4.3 TISSUE SIMULANTS.....	8
4.3.1 Tissue Simulant Recipes.....	8
4.3.2 System Checking .....	8
4.3.3 Tissue Simulants used in the Measurements.....	9
<b>5. DESCRIPTION OF THE TEST PROCEDURE .....</b>	<b>10</b>
5.1 DEVICE HOLDER.....	10
5.2 TEST POSITIONS.....	10
5.2.1 Against Phantom Head.....	10
5.2.2 Body Worn Configuration .....	11
5.3 SCAN PROCEDURES.....	11
5.4 SAR AVERAGING METHODS.....	11
<b>6. MEASUREMENT UNCERTAINTY .....</b>	<b>12</b>
<b>7. RESULTS.....</b>	<b>13</b>
<b>APPENDIX A: SYSTEM CHECKING SCANS.....</b>	<b>14</b>
<b>APPENDIX B: MEASUREMENT SCANS.....</b>	<b>17</b>
<b>APPENDIX C: RELEVANT PAGES FROM PROBE CALIBRATION REPORT(S) .....</b>	<b>24</b>
<b>APPENDIX D: RELEVANT PAGES FROM DIPOLE VALIDATION KIT REPORT(S).....</b>	<b>27</b>

---

**APPENDIX E: CONDUCTED POWER MEASUREMENTS FOR SUPPORTED TRANSMISSION MODES .....31**

## 1. SUMMARY OF SAR TEST REPORT

### 1.1 Test Details

Period of test	2007-02-21 to 2007-02-27
SN, HW and SW numbers of tested device	SN: 631360472, HW: 2000, SW: rs_gen_qs02251_r0510_rc_v1, DUT: 1
Batteries used in testing	BL-4B
Headsets used in testing	HS-9
Other accessories used in testing	-
State of sample	Prototype unit
Notes	-

### 1.2 Maximum Results

The maximum measured SAR values for Head configuration and Body Worn configuration are given in section 1.2.1 and 1.2.2 respectively. The device conforms to the requirements of the standard(s) when the maximum measured SAR value is less than or equal to the limit.

#### 1.2.1 Head Configuration

Mode	Ch / f (MHz)	Conducted power	Position	Measured SAR value (1g avg)	Scaled* SAR value (1g avg)	SAR limit (1g avg)	Result
CDMA800	384/836.52	24.63 dBm	Right Cheek	0.857W/kg	<b>0.96W/kg</b>	1.6 W/kg	<b>PASSED</b>

#### 1.2.2 Body Worn Configuration

Mode	Ch / f (MHz)	Conducted power	Separation distance	Measured SAR value (1g avg)	Scaled* SAR value (1g avg)	SAR limit (1g avg)	Result
CDMA800	777/848.31	24.72dBm	2.2 cm	0.567W/kg	<b>0.64W/kg</b>	1.6 W/kg	<b>PASSED</b>

\*SAR values are scaled up by 12% to cover measurement drift.

#### 1.2.3 Maximum Drift

Maximum drift covered by 12% scaling up of the SAR values	Maximum drift during measurements
0.5dB	0.20dB

#### 1.2.4 Measurement Uncertainty

Expanded Uncertainty (k=2) 95%	$\pm 25.8\%$
--------------------------------	--------------

## 2. DESCRIPTION OF THE DEVICE UNDER TEST

Device category	Portable
Exposure environment	General population / uncontrolled

Modes and Bands of Operation	CDMA 800
Modulation Mode	QPSK
Duty Cycle	1
Transmitter Frequency Range (MHz)	824 - 849

This is a CDMA2000 1x device

### 2.1 Description of the Antenna

The device has an internal antenna.

## 3. TEST CONDITIONS

### 3.1 Temperature and Humidity

Ambient temperature (°C):	20.9 to 21.9
Ambient humidity (RH %):	35 to 44

### 3.2 Test Signal, Frequencies and Output Power

The device was put into operation by using a call tester. Communication between the device and the call tester was established by air link.

The device output power was set to maximum power level for all tests; a fully charged battery was used for every test sequence.

In all operating bands the measurements were performed on lowest, middle and highest channels.

#### 4. DESCRIPTION OF THE TEST EQUIPMENT

##### 4.1 Measurement System and Components

The measurements were performed using an automated near-field scanning system, DASY4, manufactured by Schmid & Partner Engineering AG (SPEAG) in Switzerland. The SAR extrapolation algorithm used in all measurements was the 'advanced extrapolation' algorithm.

Test Equipment	Serial Number	Calibration interval	Calibration expiry
DAE 3	604	12 months	2007-11
E-field Probe ET3DV6	1805	12 months	2007-05
Dipole Validation Kit, D835V2	479	24 months	2007-09
DASY Software	Version 4.7	-	-

Additional test equipment used in testing:

Test Equipment	Model	Serial Number	Calibration interval	Calibration expiry
Signal Generator	Agilent E4432B	US 40052231	24 months	2008-05
Amplifier	Milmega AS0825-20L	1009777	-	-
Power Meter	Agilent E4417A	GB41290918	12 months	2007-11
Power Sensor	Agilent E9327A	US 40440897	12 months	2007-03
Power Sensor	Agilent E9327A	US 40440896	12 months	2007-03
Call Tester	Agilent 8960/E5515C	US 40440119	24 months	2007-12
Vector Network Analyzer	Agilent 8753ES	MY40002861	12 months	2007-06
Dielectric Probe Kit	Agilent 85070D	US 01440165	-	-

#### 4.1.1 Isotropic E-field Probe Type ET3DV6

<b>Construction</b>	Symmetrical design with triangular core Built-in optical fiber for surface detection system Built-in shielding against static charges PEEK enclosure material (resistant to organic solvents, e.g., butyl diglycol)
<b>Calibration</b>	Calibration certificate in Appendix C
<b>Frequency</b>	10 MHz to 3 GHz (dosimetry); Linearity: $\pm 0.2$ dB (30 MHz to 3 GHz)
<b>Optical Surface Detection</b>	$\pm 0.2$ mm repeatability in air and clear liquids over diffuse reflecting surfaces
<b>Directivity</b>	$\pm 0.2$ dB in HSL (rotation around probe axis) $\pm 0.4$ dB in HSL (rotation normal to probe axis)
<b>Dynamic Range</b>	5 $\mu$ W/g to > 100 mW/g; Linearity: $\pm 0.2$ dB
<b>Dimensions</b>	Overall length: 330 mm Tip length: 16 mm Body diameter: 12 mm Tip diameter: 6.8 mm Distance from probe tip to dipole centers: 2.7 mm
<b>Application</b>	General dosimetry up to 3 GHz Compliance tests of mobile phones Fast automatic scanning in arbitrary phantoms

#### 4.2 Phantoms

The phantom used for all tests i.e. for both system checks and device testing, was the twin-headed "SAM Phantom", manufactured by SPEAG. The phantom conforms to the requirements of IEEE 1528 - 2003.

System checking was performed using the flat section, whilst Head SAR tests used the left and right head profile sections. Body SAR testing also used the flat section between the head profiles.

The SPEAG device holder (see Section 5.1) was used to position the device in all tests whilst a tripod was used to position the validation dipoles against the flat section of phantom.

### 4.3 Tissue Simulants

Recommended values for the dielectric parameters of the tissue simulants are given in IEEE 1528 - 2003 and FCC Supplement C to OET Bulletin 65. All tests were carried out using simulants whose dielectric parameters were within  $\pm 5\%$  of the recommended values. All tests were carried out within 24 hours of measuring the dielectric parameters.

The depth of the tissue simulant was  $15.0 \pm 0.5$  cm measured from the ear reference point during system checking and device measurements.

#### 4.3.1 Tissue Simulant Recipes

The following recipe(s) were used for Head and Body tissue stimulant(s):

800MHz band		
Ingredient	Head (% by weight)	Body (% by weight)
Deionised Water	39.74	55.97
HEC	0.25	1.21
Sugar	58.31	41.76
Preservative	0.15	0.27
Salt	1.55	0.79

#### 4.3.2 System Checking

The manufacturer calibrates the probes annually. Dielectric parameters of the tissue simulants were measured every day using the dielectric probe kit and the network analyser. A system check measurement was made following the determination of the dielectric parameters of the simulant, using the dipole validation kit. A power level of 250 mW was supplied to the dipole antenna, which was placed under the flat section of the twin SAM phantom. The system checking results (dielectric parameters and SAR values) are given in the table below.

**System checking, head tissue simulant**

f [MHz]	Description	SAR [W/kg], 1g	Dielectric Parameters		Temp [°C]
			$\epsilon_r$	$\sigma$ [S/m]	
835	Reference result	2.20	42.3	0.87	21.9
	$\pm 10\%$ window	1.98 – 2.42			
	2007-02-21	2.39	40.3	0.89	



### System checking, body tissue simulant

<i>f</i> [MHz]	Description	SAR [W/kg], 1g	Dielectric Parameters		Temp [°C]
			$\epsilon_r$	$\sigma$ [S/m]	
835	Reference result	2.36	55.3	1.01	20.9
	± 10% window	2.12 – 2.60			
	2007-02-26	2.41	53.2	0.96	

Plots of the system checking scans are given in Appendix A.

### 4.3.3 Tissue Simulants used in the Measurements

#### Head tissue simulant measurements

<i>f</i> [MHz]	Description	Dielectric Parameters		Temp [°C]
		$\epsilon_r$	$\sigma$ [S/m]	
836	Recommended value	41.5	0.90	21.9
	± 5% window	39.4 – 43.6	0.86 – 0.95	
	2007-02-21	40.3	0.89	

#### Body tissue simulant measurements

<i>f</i> [MHz]	Description	Dielectric Parameters		Temp [°C]
		$\epsilon_r$	$\sigma$ [S/m]	
836	Recommended value	55.2	0.97	20.9
	± 5% window	52.4 – 58.0	0.92 – 1.02	
	2007-02-26	53.2	0.96	

---

## 5. DESCRIPTION OF THE TEST PROCEDURE

### 5.1 Device Holder

The device was placed in the device holder (illustrated below) that is supplied by SPEAG as an integral part of the Dasy system.



Device holder supplied by SPEAG

A Nokia designed spacer (illustrated below) was used to position the device within the SPEAG holder. The spacer positions the device so that the holder has minimal effect on the test results but still holds the device securely. The spacer was removed before the tests.



Nokia spacer

### 5.2 Test Positions

#### 5.2.1 Against Phantom Head

Measurements were made in “cheek” and “tilt” positions on both the left hand and right hand sides of the phantom.

The positions used in the measurements were according to IEEE 1528 - 2003 "IEEE Recommended Practice for Determining the Peak Spatial-Average Specific Absorption Rate (SAR) in the Human Head from Wireless Communications Devices: Measurement Techniques".

---

### 5.2.2 Body Worn Configuration

The device was placed in the SPEAG holder using the Nokia spacer and placed below the flat section of the phantom. The distance between the device and the phantom was kept at the separation distance indicated in Section 1.2.2 above using a separate flat spacer that was removed before the start of the measurements. The device was oriented with its antenna facing the phantom since this orientation gives higher results.

### 5.3 Scan Procedures

First, area scans were used for determination of the field distribution. Next, a zoom scan, a minimum of 5x5x7 points covering a volume of at least 30x30x30mm, was performed around the highest E-field value to determine the averaged SAR value. Drift was determined by measuring the same point at the start of the area scan and again at the end of the zoom scan.

### 5.4 SAR Averaging Methods

The maximum SAR value was averaged over a cube of tissue using interpolation and extrapolation.

The interpolation, extrapolation and maximum search routines within Dasy4 are all based on the modified Quadratic Shepard's method (Robert J. Renka, "Multivariate Interpolation Of Large Sets Of Scattered Data", University of North Texas ACM Transactions on Mathematical Software, vol. 14, no. 2, June 1988, pp. 139-148).

The interpolation scheme combines a least-square fitted function method with a weighted average method. A trivariate 3-D / bivariate 2-D quadratic function is computed for each measurement point and fitted to neighboring points by a least-square method. For the zoom scan, inverse distance weighting is incorporated to fit distant points more accurately. The interpolating function is finally calculated as a weighted average of the quadratics.

In the zoom scan, the interpolation function is used to extrapolate the Peak SAR from the deepest measurement points to the inner surface of the phantom.

## 6. MEASUREMENT UNCERTAINTY

Table 6.1 – Measurement uncertainty evaluation

Uncertainty Component	Section in IEEE 1528	Tol. (%)	Prob Dist	Div	$G$	$G \cdot u_i$ (%)	$\nu_i$
<b>Measurement System</b>							
Probe Calibration	E2.1	$\pm 5.9$	N	1	1	$\pm 5.9$	$\infty$
Axial Isotropy	E2.2	$\pm 4.7$	R	$\sqrt{3}$	$(1-c_p)^{1/2}$	$\pm 1.9$	$\infty$
Hemispherical Isotropy	E2.2	$\pm 9.6$	R	$\sqrt{3}$	$(c_p)^{1/2}$	$\pm 3.9$	$\infty$
Boundary Effect	E2.3	$\pm 1.0$	R	$\sqrt{3}$	1	$\pm 0.6$	$\infty$
Linearity	E2.4	$\pm 4.7$	R	$\sqrt{3}$	1	$\pm 2.7$	$\infty$
System Detection Limits	E2.5	$\pm 1.0$	R	$\sqrt{3}$	1	$\pm 0.6$	$\infty$
Readout Electronics	E2.6	$\pm 1.0$	N	1	1	$\pm 1.0$	$\infty$
Response Time	E2.7	$\pm 0.8$	R	$\sqrt{3}$	1	$\pm 0.5$	$\infty$
Integration Time	E2.8	$\pm 2.6$	R	$\sqrt{3}$	1	$\pm 1.5$	$\infty$
RF Ambient Conditions - Noise	E6.1	$\pm 3.0$	R	$\sqrt{3}$	1	$\pm 1.7$	$\infty$
RF Ambient Conditions - Reflections	E6.1	$\pm 3.0$	R	$\sqrt{3}$	1	$\pm 1.7$	$\infty$
Probe Positioner Mechanical Tolerance	E6.2	$\pm 0.4$	R	$\sqrt{3}$	1	$\pm 0.2$	$\infty$
Probe Positioning with respect to Phantom Shell	E6.3	$\pm 2.9$	R	$\sqrt{3}$	1	$\pm 1.7$	$\infty$
Extrapolation, interpolation and Integration Algorithms for Max. SAR Evaluation	E5	$\pm 3.9$	R	$\sqrt{3}$	1	$\pm 2.3$	$\infty$
<b>Test sample Related</b>							
Test Sample Positioning	E4.2	$\pm 6.0$	N	1	1	$\pm 6.0$	11
Device Holder Uncertainty	E4.1	$\pm 5.0$	N	1	1	$\pm 5.0$	7
Output Power Variation - SAR drift measurement	6.6.3	$\pm 0.0$	R	$\sqrt{3}$	1	$\pm 0.0$	$\infty$
<b>Phantom and Tissue Parameters</b>							
Phantom Uncertainty (shape and thickness tolerances)	E3.1	$\pm 4.0$	R	$\sqrt{3}$	1	$\pm 2.3$	$\infty$
Conductivity Target - tolerance	E3.2	$\pm 5.0$	R	$\sqrt{3}$	0.64	$\pm 1.8$	$\infty$
Conductivity - measurement uncertainty	E3.3	$\pm 5.5$	N	1	0.64	$\pm 3.5$	5
Permittivity Target - tolerance	E3.2	$\pm 5.0$	R	$\sqrt{3}$	0.6	$\pm 1.7$	$\infty$
Permittivity - measurement uncertainty	E3.3	$\pm 2.9$	N	1	0.6	$\pm 1.7$	5
<b>Combined Standard Uncertainty</b>			RSS			$\pm 12.9$	116
<b>Coverage Factor for 95%</b>			k=2				
<b>Expanded Uncertainty</b>						$\pm 25.8$	

## 7. RESULTS

The measured Head SAR values for the test device are tabulated below:

CDMA800 Head SAR results				
Test configuration		SAR, averaged over 1g (W/kg)		
		Ch 1013 824.70 MHz	Ch 384 836.52 MHz	Ch 777 848.31 MHz
<b>RC3 / S055 Power</b>		<b>24.71dBm</b>	<b>24.63dBm</b>	<b>24.72dBm</b>
Left	Cheek	0.375	0.687	0.611
	Tilt		0.322	
Right	Cheek	0.447	<b>0.857</b>	0.711
	Tilt		0.317	

The measured Body SAR values for the test device are tabulated below:

CDMA800 Body SAR results				
Test configuration		SAR, averaged over 1g (W/kg)		
		Ch 1013 824.70 MHz	Ch 384 836.52 MHz	Ch 777 848.31 MHz
<b>RC3 / S055 Power</b>		<b>24.71dBm</b>	<b>24.63dBm</b>	<b>24.72dBm</b>
Without Headset		0.304	0.411	<b>0.567</b>
Headset HS-9		0.341	0.306	0.330

The conducted power measurement results of the product's other transmission configurations are given in Appendix E.

Plots of the Measurement scans are given in Appendix B.

---

## APPENDIX A: SYSTEM CHECKING SCANS

Date/Time: 2007-02-21 13:31:52

Test Laboratory: TCC San Diego

**Dipole 835MHz; Type: D835V2; Serial: 479 – Head System Check**

**Communication System: CW835**

Frequency: 835 MHz; Duty Cycle: 1:1

Medium: Cellular Head; Medium Notes: Medium Temperature: 21.9

Medium parameters used:  $f = 835 \text{ MHz}$ ;  $\sigma = 0.886 \text{ mho/m}$ ;  $\epsilon_r = 40.3$ ;  $\rho = 1000 \text{ kg/m}^3$

Phantom section: Flat Section

DASY4 Configuration:

- Probe: ET3DV6 - SN1805; Probe Notes:
- ConvF(6.57, 6.57, 6.57); Calibrated: 2006-05-03
- Sensor-Surface: 4mm (Mechanical And Optical Surface Detection)
- Electronics: DAE4 Sn604; Calibrated: 2006-11-13
- Phantom: SAM1; Type: SAM; Serial: TP-1035
- Measurement SW: DASY4, V4.7 Build 44; Post processing SW: SEMCAD, V1.8 Build 172

**835MHz/Area Scan (61x61x1):** Measurement grid:  $dx=15\text{mm}$ ,  $dy=15\text{mm}$

Maximum value of SAR (interpolated) = 2.61 mW/g

**835MHz/Zoom Scan (7x7x7)/Cube 0:** Measurement grid:  $dx=5\text{mm}$ ,  $dy=5\text{mm}$ ,  $dz=5\text{mm}$

Reference Value = 55.6 V/m

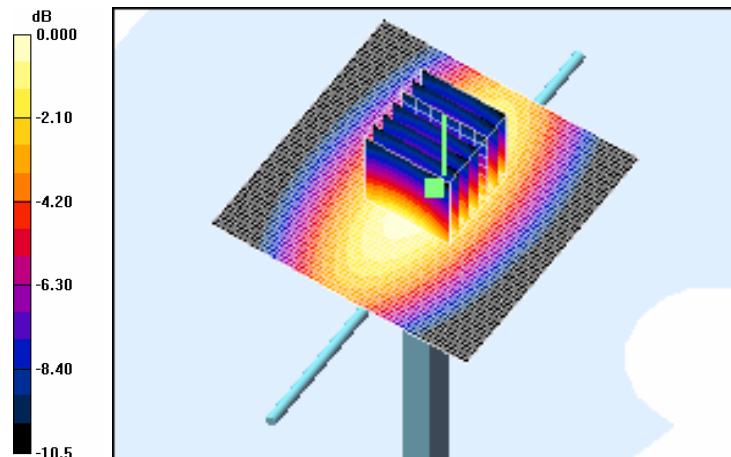
Peak SAR (extrapolated) = 3.60 W/kg

**SAR(1 g) = 2.39 mW/g**

**SAR(10 g) = 1.56 mW/g**

**Power Drift = 0.019 dB**

Maximum value of SAR (measured) = 2.57 mW/g



SAR Report

WR1191.001\_v1\_A

Applicant: Nokia Corporation

Type: RM-307

Copyright © 2007 TCC San Diego

Date/Time: 2007-02-26 11:38:11

Test Laboratory: TCC San Diego

**Dipole 835MHz;Type: D835V2; Serial: 479; Body System Check**

**Communication System: CW835**

Frequency: 835 MHz; Duty Cycle: 1:1

Medium: Cellular Body; Medium Notes: Medium Temperature: 20.9

Medium parameters used:  $f = 835 \text{ MHz}$ ;  $\sigma = 0.962 \text{ mho/m}$ ;  $\epsilon_r = 53.2$ ;  $\rho = 1000 \text{ kg/m}^3$

Phantom section: Flat Section

DASY4 Configuration:

- Probe: ET3DV6 - SN1805; Probe Notes:
- ConvF(6.33, 6.33, 6.33); Calibrated: 2006-05-03
- Sensor-Surface: 4mm (Mechanical And Optical Surface Detection)
- Electronics: DAE4 Sn604; Calibrated: 2006-11-13
- Phantom: SAM2; Type: SAM; Serial: TP-1279
- Measurement SW: DASY4, V4.7 Build 44; Post processing SW: SEMCAD, V1.8 Build 172

**835MHz/Area Scan (61x61x1):** Measurement grid:  $dx=15\text{mm}$ ,  $dy=15\text{mm}$

Maximum value of SAR (interpolated) = 2.61 mW/g

**835MHz/Zoom Scan (7x7x7)/Cube 0:** Measurement grid:  $dx=5\text{mm}$ ,  $dy=5\text{mm}$ ,  $dz=5\text{mm}$

Reference Value = 53.7 V/m

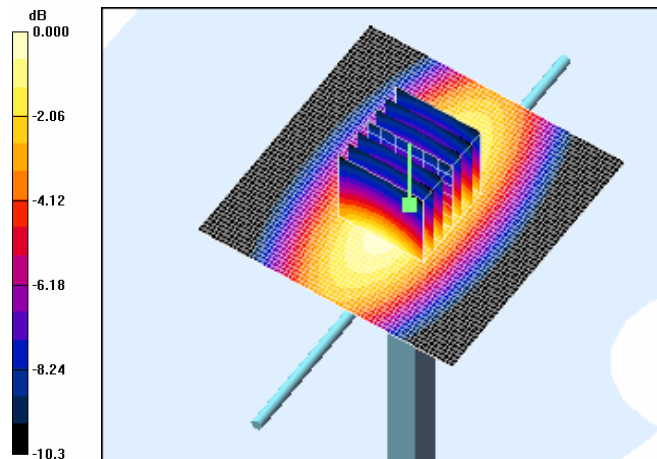
Peak SAR (extrapolated) = 3.56 W/kg

**SAR(1 g) = 2.41 mW/g**

**SAR(10 g) = 1.58 mW/g**

**Power Drift = 0.023 dB**

Maximum value of SAR (measured) = 2.61 mW/g





---

## APPENDIX B: MEASUREMENT SCANS

Date/Time: 2007-02-21 17:11:19

Test Laboratory: TCC San Diego  
**Type: RM-307; Serial: 631360472**

**Communication System: CDMA800**

Frequency: 836.52 MHz; Duty Cycle: 1:1

Medium: Cellular Head; Medium Notes: Liquid Temperature 21.9

Medium parameters used (interpolated):  $f = 836.52$  MHz;  $\sigma = 0.888$  mho/m;  $\epsilon_r = 40.3$ ;  $\rho = 1000$  kg/m<sup>3</sup>

Phantom section: Left Section

DASY4 Configuration:

- Probe: ET3DV6 - SN1805; Probe Notes:
- ConvF(6.57, 6.57, 6.57); Calibrated: 2006-05-03
- Sensor-Surface: 4mm (Mechanical And Optical Surface Detection)
- Electronics: DAE4 Sn604; Calibrated: 2006-11-13
- Phantom: SAM1; Type: Twin Phantom; Serial TP-1035
- Measurement SW: DASY4, V4.7 Build 44; Post processing SW: SEMCAD, V1.8 Build 172

**Left Cheek – Middle/Area Scan (61x111x1):** Measurement grid: dx=15mm, dy=15mm

Maximum value of SAR (interpolated) = 0.741 mW/g

**Left Cheek – Middle/Zoom Scan (5x5x7)/Cube 0:** Measurement grid: dx=8mm, dy=8mm, dz=5mm

Reference Value = 9.42 V/m

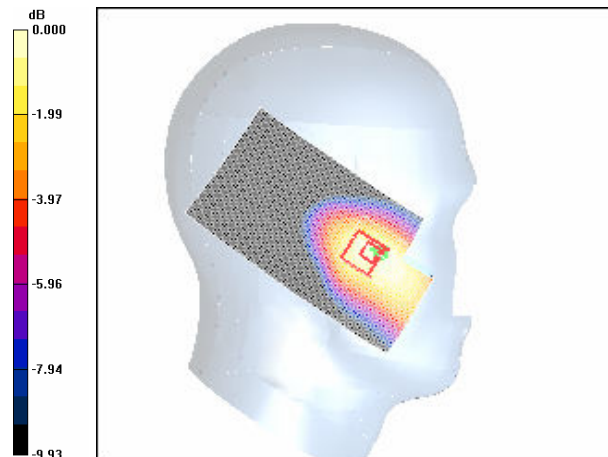
Peak SAR (extrapolated) = 1.21 W/kg

**SAR(1 g) = 0.687 mW/g**

**SAR(10 g) = 0.453 mW/g**

**Power Drift = -0.001 dB**

Maximum value of SAR (measured) = 0.727 mW/g



Date/Time: 2007-02-22 9:51:03

Test Laboratory: TCC San Diego  
**Type: RM-307; Serial: 631360472**

**Communication System: CDMA800**

Frequency: 836.52 MHz; Duty Cycle: 1:1

Medium: Cellular Head; Medium Notes: Liquid Temperature 21.9

Medium parameters used (interpolated):  $f = 836.52$  MHz;  $\sigma = 0.888$  mho/m;  $\epsilon_r = 40.3$ ;  $\rho = 1000$  kg/m<sup>3</sup>

Phantom section: Left Section

DASY4 Configuration:

- Probe: ET3DV6 - SN1805; Probe Notes:
- ConvF(6.57, 6.57, 6.57); Calibrated: 2006-05-03
- Sensor-Surface: 4mm (Mechanical And Optical Surface Detection)
- Electronics: DAE4 Sn604; Calibrated: 2006-11-13
- Phantom: SAM1; Type: Twin Phantom; Serial TP-1035
- Measurement SW: DASY4, V4.7 Build 44; Post processing SW: SEMCAD, V1.8 Build 172

**Left Tilt- Middle/Area Scan (51x91x1):** Measurement grid: dx=15mm, dy=15mm

Maximum value of SAR (interpolated) = 0.339 mW/g

**Left Tilt- Middle/Zoom Scan (5x5x7)/Cube 0:** Measurement grid: dx=8mm, dy=8mm, dz=5mm

Reference Value = 10.4 V/m

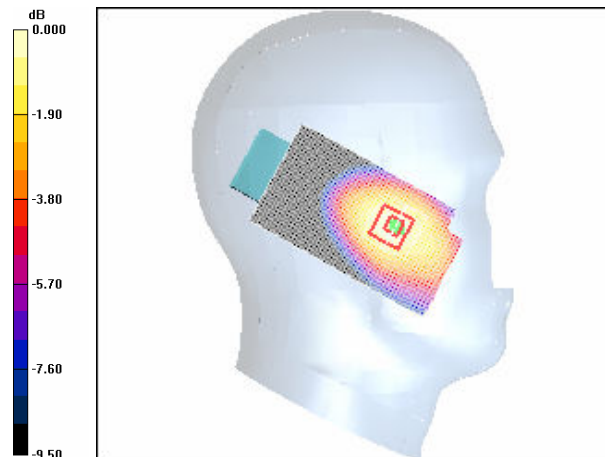
Peak SAR (extrapolated) = 0.462 W/kg

**SAR(1 g) = 0.322 mW/g**

**SAR(10 g) = 0.226 mW/g**

**Power Drift = -0.024 dB**

Maximum value of SAR (measured) = 0.343 mW/g



Date/Time: 2007-02-22 12:42:03

Test Laboratory: TCC San Diego  
**Type: RM-307; Serial: 631360472**

**Communication System: CDMA800**

Frequency: 836.52 MHz; Duty Cycle: 1:1

Medium: Cellular Head; Medium Notes: Liquid Temperature 21.9

Medium parameters used (interpolated):  $f = 836.52$  MHz;  $\sigma = 0.888$  mho/m;  $\epsilon_r = 40.3$ ;  $\rho = 1000$  kg/m<sup>3</sup>

Phantom section: Right Section

**DASY4 Configuration:**

- Probe: ET3DV6 - SN1805; Probe Notes:
- ConvF(6.57, 6.57, 6.57); Calibrated: 2006-05-03
- Sensor-Surface: 4mm (Mechanical And Optical Surface Detection)
- Electronics: DAE4 Sn604; Calibrated: 2006-11-13
- Phantom: SAM1; Type: Twin Phantom; Serial TP-1035
- Measurement SW: DASY4, V4.7 Build 44; Post processing SW: SEMCAD, V1.8 Build 172

**Right Cheek – Middle/Area Scan (71x111x1):** Measurement grid: dx=15mm, dy=15mm

Maximum value of SAR (interpolated) = 0.925 mW/g

**Right Cheek – Middle/Zoom Scan (5x5x7)/Cube 0:** Measurement grid: dx=8mm, dy=8mm, dz=5mm

Reference Value = 10.1 V/m

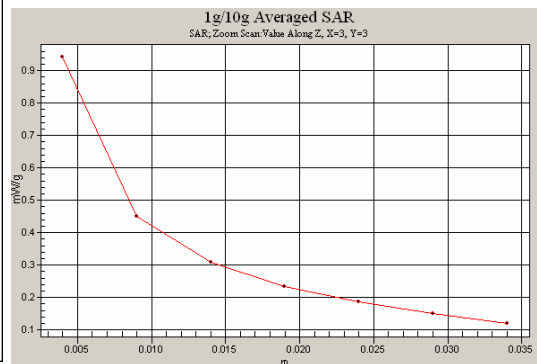
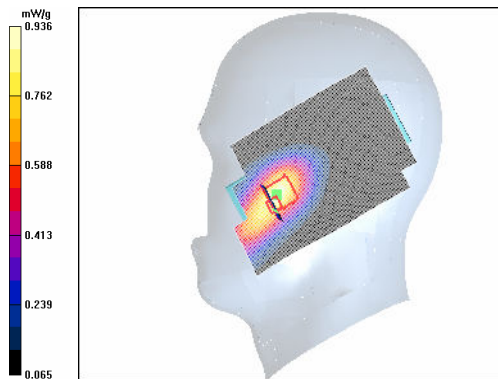
Peak SAR (extrapolated) = 1.94 W/kg

**SAR(1 g) = 0.857 mW/g**

**SAR(10 g) = 0.550 mW/g**

**Power Drift = 0.103 dB**

Maximum value of SAR (measured) = 0.936 mW/g



Date/Time: 2007-02-22 8:29:21

Test Laboratory: TCC San Diego  
**Type: RM-307; Serial: 631360472**

**Communication System: CDMA800**

Frequency: 836.52 MHz; Duty Cycle: 1:1

Medium: Cellular Body; Medium Notes: Liquid Temperature 21.9

Medium parameters used (interpolated):  $f = 836.52$  MHz;  $\sigma = 0.888$  mho/m;  $\epsilon_r = 40.3$ ;  $\rho = 1000$  kg/m<sup>3</sup>

Phantom section: Right Section

DASY4 Configuration:

- Probe: ET3DV6 - SN1805; Probe Notes:
- ConvF(6.57, 6.57, 6.57); Calibrated: 2006-05-03
- Sensor-Surface: 4mm (Mechanical And Optical Surface Detection)
- Electronics: DAE4 Sn604; Calibrated: 2006-11-13
- Phantom: SAM1; Type: Twin Phantom; Serial TP-1035
- Measurement SW: DASY4, V4.7 Build 44; Post processing SW: SEMCAD, V1.8 Build 172

**Right Tilt – Middle/Area Scan (51x91x1):** Measurement grid: dx=15mm, dy=15mm

Maximum value of SAR (interpolated) = 0.347 mW/g

**Right Tilt – Middle/Zoom Scan (5x5x7)/Cube 0:** Measurement grid: dx=8mm, dy=8mm, dz=5mm

Reference Value = 13.0 V/m

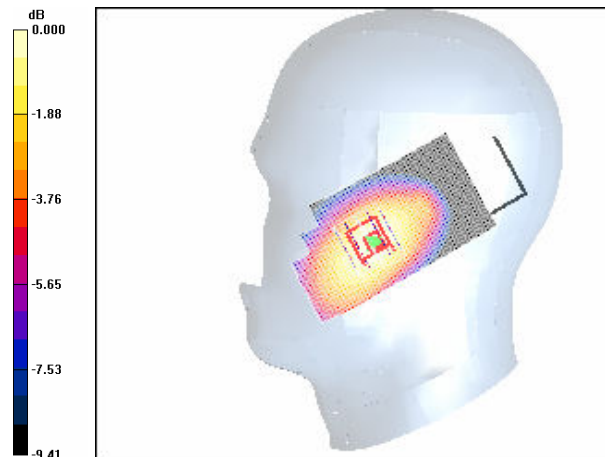
Peak SAR (extrapolated) = 0.418 W/kg

**SAR(1 g) = 0.317 mW/g**

**SAR(10 g) = 0.227 mW/g**

**Power Drift = 0.108 dB**

Maximum value of SAR (measured) = 0.333 mW/g



Date/Time: 2007-02-27 9:02:01

Test Laboratory: TCC San Diego  
**Type: RM-307; Serial: 631360472**

**Communication System: CDMA800**

Frequency: 848.31 MHz; Duty Cycle: 1:1

Medium: Cellular Body; Medium Notes: Liquid temperature at 20.9 C

Medium parameters used:  $f = 848.5$  MHz;  $\sigma = 0.975$  mho/m;  $\epsilon_r = 53$ ;  $\rho = 1000$  kg/m<sup>3</sup>

Phantom section: Flat Section

DASY4 Configuration:

- Probe: ET3DV6 - SN1805; Probe Notes:
- ConvF(6.33, 6.33, 6.33); Calibrated: 2006-05-03
- Sensor-Surface: 4mm (Mechanical And Optical Surface Detection)
- Electronics: DAE4 Sn604; Calibrated: 2006-11-13
- Phantom: SAM2; Type: Twin Phantom; Serial: TP-1279
- Measurement SW: DASY4, V4.7 Build 44; Post processing SW: SEMCAD, V1.8 Build 172

**Body/Area Scan (51x81x1):** Measurement grid: dx=15mm, dy=15mm

Maximum value of SAR (interpolated) = 0.700 mW/g

**Body/Zoom Scan (5x5x7)/Cube 0:** Measurement grid: dx=8mm, dy=8mm, dz=5mm

Reference Value = 13.3 V/m

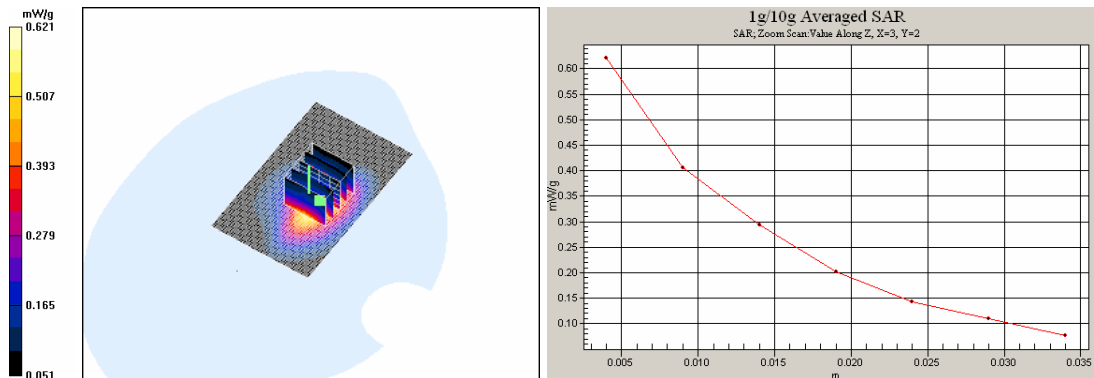
Peak SAR (extrapolated) = 0.851 W/kg

**SAR(1 g) = 0.567 mW/g**

**SAR(10 g) = 0.385 mW/g**

**Power Drift = -0.108 dB**

Maximum value of SAR (measured) = 0.621 mW/g



Date/Time: 2007-02-27 11:00:36

Test Laboratory: TCC San Diego  
**Type: RM-307; Serial: 631360472**

**Communication System: CDMA800**

Frequency: 824.7 MHz; Duty Cycle: 1:1

Medium: Cellular Body; Medium Notes: Liquid temperature at 20.9 C

Medium parameters used (interpolated):  $f = 824.7$  MHz;  $\sigma = 0.949$  mho/m;  $\epsilon_r = 53.3$ ;  $\rho = 1000$  kg/m<sup>3</sup>

Phantom section: Flat Section

DASY4 Configuration:

- Probe: ET3DV6 - SN1805; Probe Notes:
- ConvF(6.33, 6.33, 6.33); Calibrated: 2006-05-03
- Sensor-Surface: 4mm (Mechanical And Optical Surface Detection)
- Electronics: DAE4 Sn604; Calibrated: 2006-11-13
- Phantom: SAM2; Type: Twin Phantom; Serial: TP-1279
- Measurement SW: DASY4, V4.7 Build 44; Post processing SW: SEMCAD, V1.8 Build 172

**Body HS-9- Low/Area Scan (51x81x1):** Measurement grid: dx=15mm, dy=15mm

Maximum value of SAR (interpolated) = 0.365 mW/g

**Body HS-9 - Low/Zoom Scan (5x5x7)/Cube 0:** Measurement grid: dx=8mm, dy=8mm, dz=5mm

Reference Value = 10.2 V/m

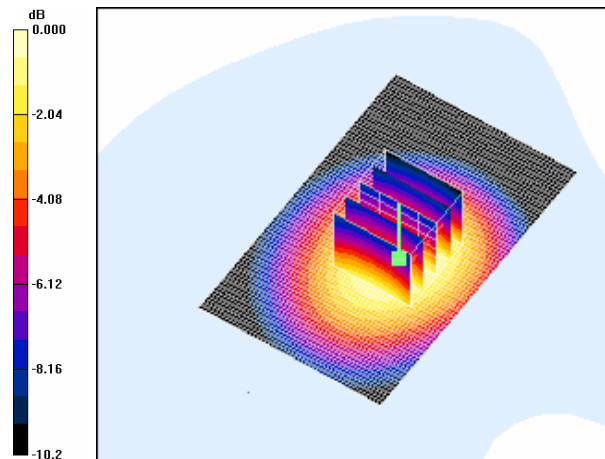
Peak SAR (extrapolated) = 0.464 W/kg

**SAR(1 g) = 0.341 mW/g**

**SAR(10 g) = 0.237 mW/g**

**Power Drift = 0.097 dB**

Maximum value of SAR (measured) = 0.363 mW/g



**APPENDIX C: RELEVANT PAGES FROM PROBE CALIBRATION REPORT(S)**



**Calibration Laboratory of**  
**Schmid & Partner**  
**Engineering AG**  
Zeughausstrasse 43, 8004 Zurich, Switzerland



**S** Schweizerischer Kalibrierdienst  
**C** Service suisse d'étalonnage  
**S** Servizio svizzero di taratura  
**S** Swiss Calibration Service

Accredited by the Swiss Federal Office of Metrology and Accreditation  
The Swiss Accreditation Service is one of the signatories to the EA  
Multilateral Agreement for the recognition of calibration certificates

Accreditation No.: **SCS 108**

Client **Nokia SD TCC**

Certificate No: **ET3-1805\_May06**

## CALIBRATION CERTIFICATE

Object **ET3DV6 - SN: 1805**

Calibration procedure(s) **QA CAL-01.v5**  
**Calibration procedure for dosimetric E-field probes**

Calibration date: **May 3, 2006**

Condition of the calibrated item **In Tolerance**

This calibration certificate documents the traceability to national standards, which realize the physical units of measurements (SI).  
The measurements and the uncertainties with confidence probability are given on the following pages and are part of the certificate.

All calibrations have been conducted in the closed laboratory facility: environment temperature  $(22 \pm 3)^{\circ}\text{C}$  and humidity  $< 70\%$ .

Calibration Equipment used (M&TE critical for calibration)

Primary Standards	ID #	Cal Date (Calibrated by, Certificate No.)	Scheduled Calibration
Power meter E4419B	GB41293874	5-Apr-06 (METAS, No. 251-00557)	Apr-07
Power sensor E4412A	MY41495277	5-Apr-06 (METAS, No. 251-00557)	Apr-07
Power sensor E4412A	MY41498087	5-Apr-06 (METAS, No. 251-00557)	Apr-07
Reference 3 dB Attenuator	SN: S5054 (3c)	11-Aug-05 (METAS, No. 251-00499)	Aug-06
Reference 20 dB Attenuator	SN: S5086 (20b)	4-Apr-06 (METAS, No. 251-00558)	Apr-07
Reference 30 dB Attenuator	SN: S5129 (30b)	11-Aug-05 (METAS, No. 251-00500)	Aug-06
Reference Probe ES3DV2	SN: 3013	2-Jan-06 (SPEAG, No. ES3-3013_Jan06)	Jan-07
DAE4	SN: 654	2-Feb-06 (SPEAG, No. DAE4-654_Feb06)	Feb-07

Secondary Standards	ID #	Check Date (in house)	Scheduled Check
RF generator HP 8648C	US3642U01700	4-Aug-99 (SPEAG, in house check Nov-05)	In house check: Nov-07
Network Analyzer HP 8753E	US37390585	18-Oct-01 (SPEAG, in house check Nov-05)	In house check: Nov 06

	Name	Function	Signature
Calibrated by:	Katja Pokovic	Technical Manager	
Approved by:	Niels Kuster	Quality Manager	

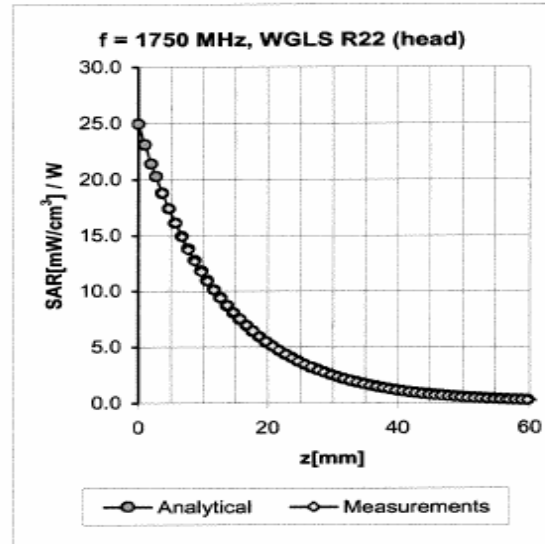
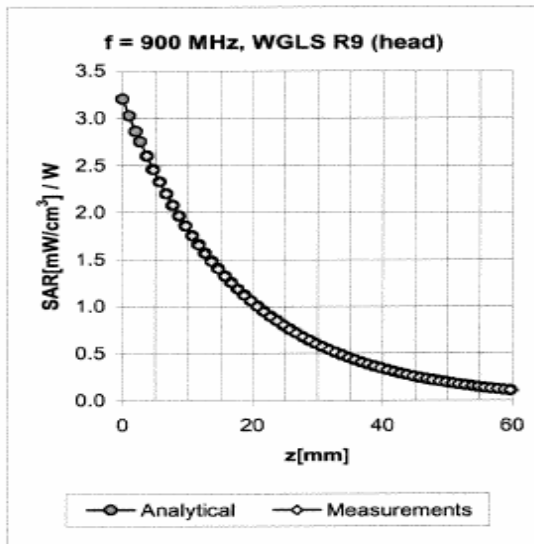
Issued: May 3, 2006

This calibration certificate shall not be reproduced except in full without written approval of the laboratory.

ET3DV6 SN:1805

May 3, 2006

## Conversion Factor Assessment



f [MHz]	Validity [MHz] <sup>c</sup>	TSL	Permittivity	Conductivity	Alpha	Depth	ConvF	Uncertainty
835	± 50 / ± 100	Head	41.5 ± 5%	0.90 ± 5%	0.61	1.72	6.57	± 11.0% (k=2)
900	± 50 / ± 100	Head	41.5 ± 5%	0.97 ± 5%	0.59	1.78	6.37	± 11.0% (k=2)
1750	± 50 / ± 100	Head	40.1 ± 5%	1.37 ± 5%	0.48	2.76	5.31	± 11.0% (k=2)
1900	± 50 / ± 100	Head	40.0 ± 5%	1.40 ± 5%	0.57	2.44	5.08	± 11.0% (k=2)
2450	± 50 / ± 100	Head	39.2 ± 5%	1.80 ± 5%	0.71	1.78	4.48	± 11.8% (k=2)
835	± 50 / ± 100	Body	55.2 ± 5%	0.97 ± 5%	0.49	1.98	6.33	± 11.0% (k=2)
900	± 50 / ± 100	Body	55.0 ± 5%	1.05 ± 5%	0.51	1.98	6.07	± 11.0% (k=2)
1750	± 50 / ± 100	Body	53.4 ± 5%	1.49 ± 5%	0.57	2.58	4.72	± 11.0% (k=2)
1900	± 50 / ± 100	Body	53.3 ± 5%	1.52 ± 5%	0.67	2.34	4.51	± 11.0% (k=2)
2450	± 50 / ± 100	Body	52.7 ± 5%	1.95 ± 5%	0.70	1.85	4.21	± 11.8% (k=2)

<sup>c</sup> The validity of ± 100 MHz only applies for DASY v4.4 and higher (see Page 2). The uncertainty is the RSS of the ConvF uncertainty at calibration frequency and the uncertainty for the indicated frequency band.

---

**APPENDIX D: RELEVANT PAGES FROM DIPOLE VALIDATION KIT REPORT(S)**

.

**Calibration Laboratory of**  
**Schmid & Partner**  
**Engineering AG**  
Zeughausstrasse 43, 8004 Zurich, Switzerland



**S** Schweizerischer Kalibrierdienst  
**C** Service suisse d'étalonnage  
**S** Servizio svizzero di taratura  
**S** Swiss Calibration Service

Accredited by the Swiss Federal Office of Metrology and Accreditation  
The Swiss Accreditation Service is one of the signatories to the EA  
Multilateral Agreement for the recognition of calibration certificates

Accreditation No.: **SCS 108**

Client **Nokia SD**

Certificate No: **D835V2-479\_Sep05**

## CALIBRATION CERTIFICATE

Object **D835V2 - SN: 479**

Calibration procedure(s) **QA CAL-05.v6**  
**Calibration procedure for dipole validation kits**

Calibration date: **September 19, 2005**

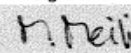

Condition of the calibrated item **In Tolerance**

This calibration certificate documents the traceability to national standards, which realize the physical units of measurements (SI).  
The measurements and the uncertainties with confidence probability are given on the following pages and are part of the certificate.

All calibrations have been conducted in the closed laboratory facility: environment temperature  $(22 \pm 3)^{\circ}\text{C}$  and humidity  $< 70\%$ .

Calibration Equipment used (M&TE critical for calibration)

Primary Standards	ID #	Cal Date (Calibrated by, Certificate No.)	Scheduled Calibration
Power meter EPM E442	GB37480704	12-Oct-04 (METAS, No. 251-00412)	Oct-05
Power sensor HP 8481A	US37292783	12-Oct-04 (METAS, No. 251-00412)	Oct-05
Reference 20 dB Attenuator	SN: 5086 (20g)	11-Aug-05 (METAS, No 251-00498)	Aug-06
Reference 10 dB Attenuator	SN: 5047.2 (10r)	11-Aug-05 (METAS, No 251-00498)	Aug-06
Reference Probe ET3DV6	SN 1507	26-Oct-04 (SPEAG, No. ET3-1507_Oct04)	Oct-05
DAE4	SN 601	07-Jan-05 (SPEAG, No. DAE4-601_Jan05)	Jan-06
Secondary Standards	ID #	Check Date (in house)	Scheduled Check
Power sensor HP 8481A	MY41092317	18-Oct-02 (SPEAG, in house check Oct-03)	In house check: Oct-05
RF generator R&S SML-03	100698	27-Mar-02 (SPEAG, in house check Dec-03)	In house check: Dec-05
Network Analyzer HP 8753E	US37390585 S4206	18-Oct-01 (SPEAG, in house check Nov-04)	In house check: Nov-05

Calibrated by:	Name <b>Mike Meili</b>	Function Laboratory Technician	Signature 
Approved by:	<b>Katja Pokovic</b>	Technical Manager	

Issued: September 22, 2005

This calibration certificate shall not be reproduced except in full without written approval of the laboratory.

## DASY4 Validation Report for Head TSL

Date/Time: 15.09.2005 10:40:41

Test Laboratory: SPEAG, Zurich, Switzerland

**DUT: Dipole 835 MHz; Type: D835V2; Serial: D835V2 - SN479**

Communication System: CW-835; Frequency: 835 MHz; Duty Cycle: 1:1

Medium: HSL 835 MHz;

Medium parameters used:  $f = 835 \text{ MHz}$ ;  $\sigma = 0.87 \text{ mho/m}$ ;  $\epsilon_r = 42.3$ ;  $\rho = 1000 \text{ kg/m}^3$

Phantom section: Flat Section

Measurement Standard: DASY4 (High Precision Assessment)

DASY4 Configuration:

- Probe: ET3DV6 - SN1507; ConvF(6.24, 6.24, 6.24); Calibrated: 26.10.2004
- Sensor-Surface: 4mm (Mechanical Surface Detection)
- Electronics: DAE4 Sn601; Calibrated: 07.01.2005
- Phantom: Flat Phantom 4.9L; Type: QD000P49AA
- Measurement SW: DASY4, V4.6 Build 19; Postprocessing SW: SEMCAD, V1.8 Build 159

**Pin = 250 mW; d = 15 mm/Area Scan (81x81x1):**

Measurement grid:  $dx=15\text{mm}$ ,  $dy=15\text{mm}$

Maximum value of SAR (interpolated) = 2.38 mW/g

**Pin = 250 mW; d = 15 mm/Zoom Scan (7x7x7)/Cube 0:**

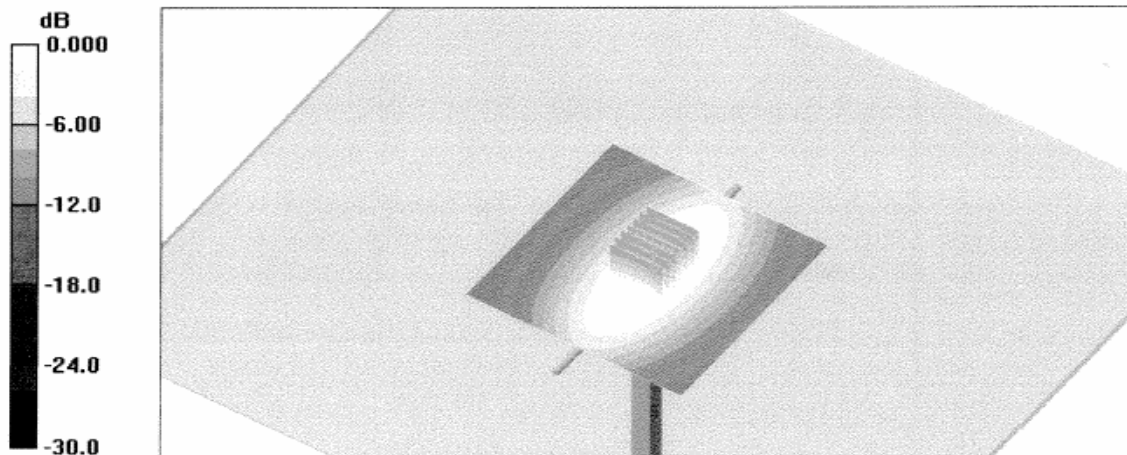
Measurement grid:  $dx=5\text{mm}$ ,  $dy=5\text{mm}$ ,  $dz=5\text{mm}$

Reference Value = 54.0 V/m; Power Drift = -0.032 dB

Peak SAR (extrapolated) = 3.21 W/kg

**SAR(1 g) = 2.2 mW/g; SAR(10 g) = 1.44 mW/g**

Maximum value of SAR (measured) = 2.39 mW/g



0 dB = 2.39mW/g



## DASY4 Validation Report for Body TSL

Date/Time: 19.09.2005 14:39:53

Test Laboratory: SPEAG, Zurich, Switzerland

**DUT: Dipole 835 MHz; Type: D835V2; Serial: D835V2 - SN:479**

Communication System: CW-835; Frequency: 835 MHz; Duty Cycle: 1:1

Medium: MSL835MHz;

Medium parameters used:  $f = 835 \text{ MHz}$ ;  $\sigma = 1.01 \text{ mho/m}$ ;  $\epsilon_r = 55.3$ ;  $\rho = 1000 \text{ kg/m}^3$

Phantom section: Flat Section

Measurement Standard: DASY4 (High Precision Assessment)

DASY4 Configuration:

- Probe: ET3DV6 - SN1507; ConvF(5.98, 5.98, 5.98); Calibrated: 26.10.2004
- Sensor-Surface: 4mm (Mechanical Surface Detection)
- Electronics: DAE4 Sn601; Calibrated: 07.01.2005
- Phantom: Flat Phantom 4.9L; Type: QD000P49AA
- Measurement SW: DASY4, V4.6 Build 19; Postprocessing SW: SEMCAD, V1.8 Build 159

**Pin = 250 mW; d = 15 mm/Area Scan (81x81x1):**

Measurement grid:  $dx=15\text{mm}$ ,  $dy=15\text{mm}$

Maximum value of SAR (interpolated) = 2.56 mW/g

**Pin = 250 mW; d = 15 mm/Zoom Scan (7x7x7)/Cube 0:**

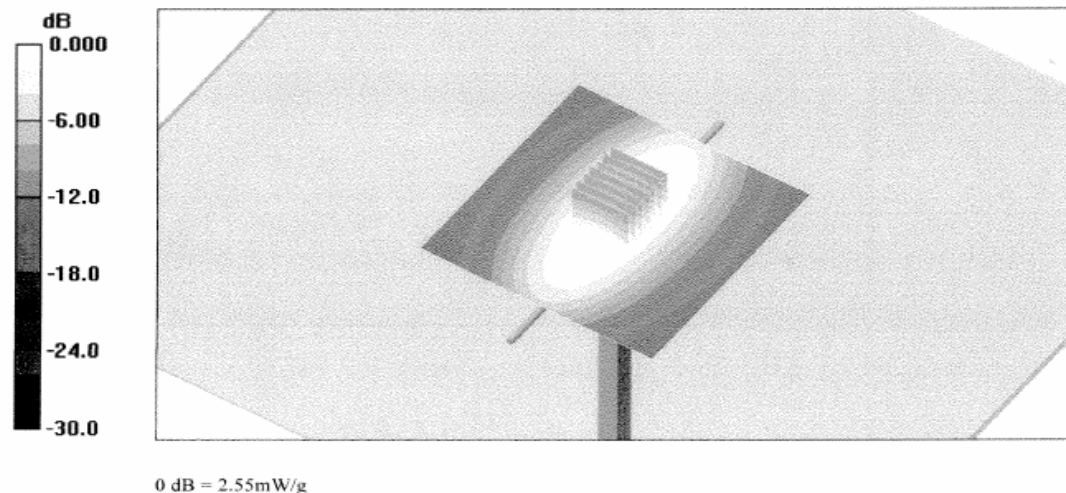
Measurement grid:  $dx=5\text{mm}$ ,  $dy=5\text{mm}$ ,  $dz=5\text{mm}$

Reference Value = 52.8 V/m; Power Drift = 0.003 dB

Peak SAR (extrapolated) = 3.34 W/kg

**SAR(1 g) = 2.36 mW/g; SAR(10 g) = 1.55 mW/g**

Maximum value of SAR (measured) = 2.55 mW/g



## APPENDIX E: CONDUCTED POWER MEASUREMENTS FOR SUPPORTED TRANSMISSION MODES

Test Laboratory: TCC San Diego  
Type: RM-307; Serial: 631360472

### CDMA800

Radio Configuration	Service Options and Channel Configurations	Supported	Ch 1013 824.70 MHz	Ch 384 836.52 MHz	Ch 777 848.31 MHz
			Pavg (dBm)	Pavg (dBm)	Pavg (dBm)
RC1	S01	no			
RC1	S02	yes	24.40	24.34	24.45
RC1	S03	yes	24.20	24.07	24.30
RC1	S055	yes	24.41	24.30	24.47
RC2	S09	yes	24.44	24.32	24.47
RC2	S055	yes	24.46	24.30	24.46
RC3	S01	no			
RC3	S02	yes	24.70	24.57	24.60
RC3	S03	yes	24.62	24.53	24.67
RC3	S032 (no SCH1)	no			
RC3	S032 (SCH1 9.6 kpbs)	no			
RC3	S032 (SCH1 19.2 kpbs)	no			
RC3	S032 (SCH1 38.4 kpbs)	no			
RC3	S032 (SCH1 76.8 kpbs)	no			
RC3	S032 (SCH1 153.6 kpbs)	no			
RC3	S033 (SCH1 9.6 kpbs)	no			
RC3	S033 (SCH1 19.2 kpbs)	no			
RC3	S033 (SCH1 38.4 kpbs)	no			
RC3	S033 (SCH1 76.8 kpbs)	no			
RC3	S033 (SCH1 153.6 kpbs)	no			
<b>RC3</b>	<b>S055</b>	<b>yes</b>	<b>24.71</b>	<b>24.63</b>	<b>24.72</b>
RC4	S01	no			
RC4	S02	yes	24.70	24.61	24.71
RC4	S03	yes	24.69	24.55	24.68
RC4	S032 (no SCH1)	no			
RC4	S032 (SCH1 9.6 kpbs)	no			
RC4	S032 (SCH1 19.2 kpbs)	no			
RC4	S032 (SCH1 38.4 kpbs)	no			
RC4	S032 (SCH1 76.8 kpbs)	no			
RC4	S032 (SCH1 153.6 kpbs)	no			
RC4	S033 (SCH1 9.6 kpbs)	no			
RC4	S033 (SCH1 19.2 kpbs)	no			
RC4	S033 (SCH1 38.4 kpbs)	no			

RC4	S033 (SCH1 76.8 kpbs)	no			
RC4	S033 (SCH1 153.6 kpbs)	no			
RC4	S055	yes	24.70	24.60	24.69
RC5	S09	yes	24.51	24.42	24.50
RC5	S033 (SCH1 9.6 kpbs)	no			
RC5	S033 (SCH1 19.2 kpbs)	no			
RC5	S033 (SCH1 38.4 kpbs)	no			
RC5	S033 (SCH1 76.8 kpbs)	no			
RC5	S033 (SCH1 153.6 kpbs)	no			
RC5	S055	yes	24.50	24.38	24.50