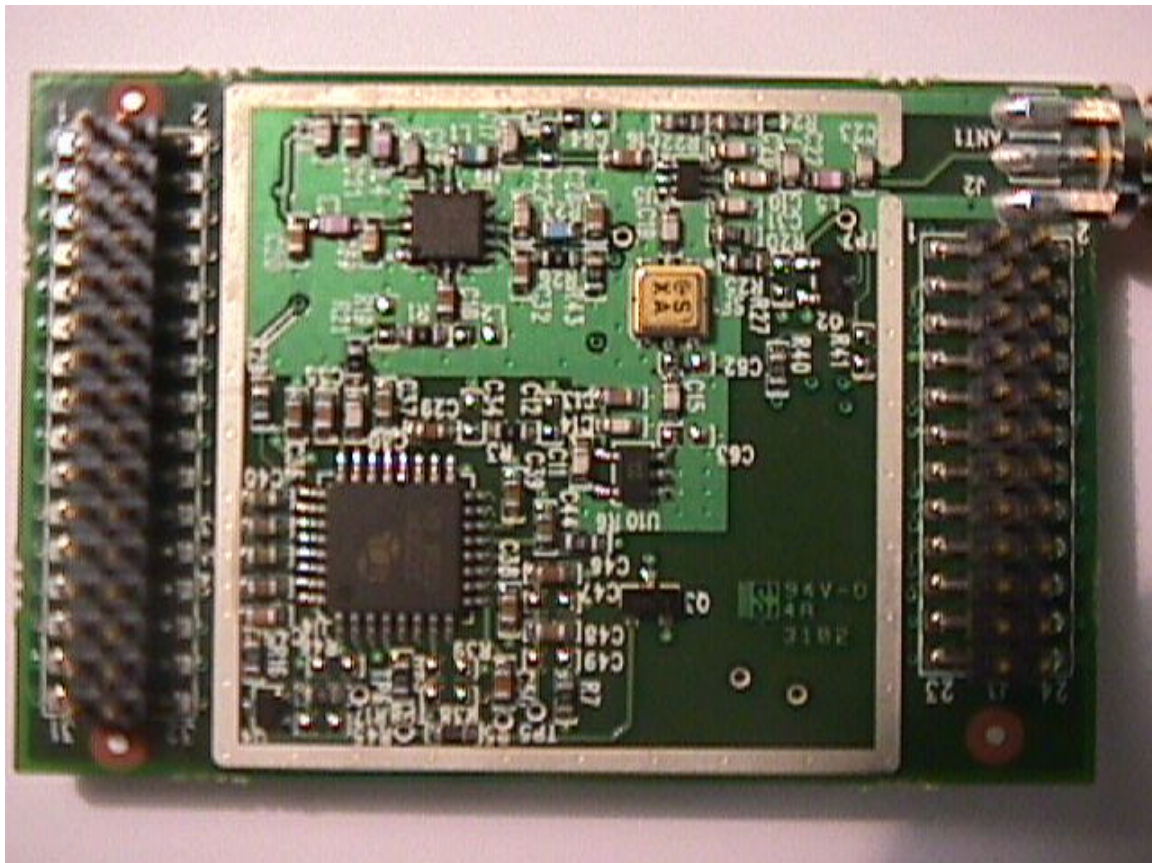


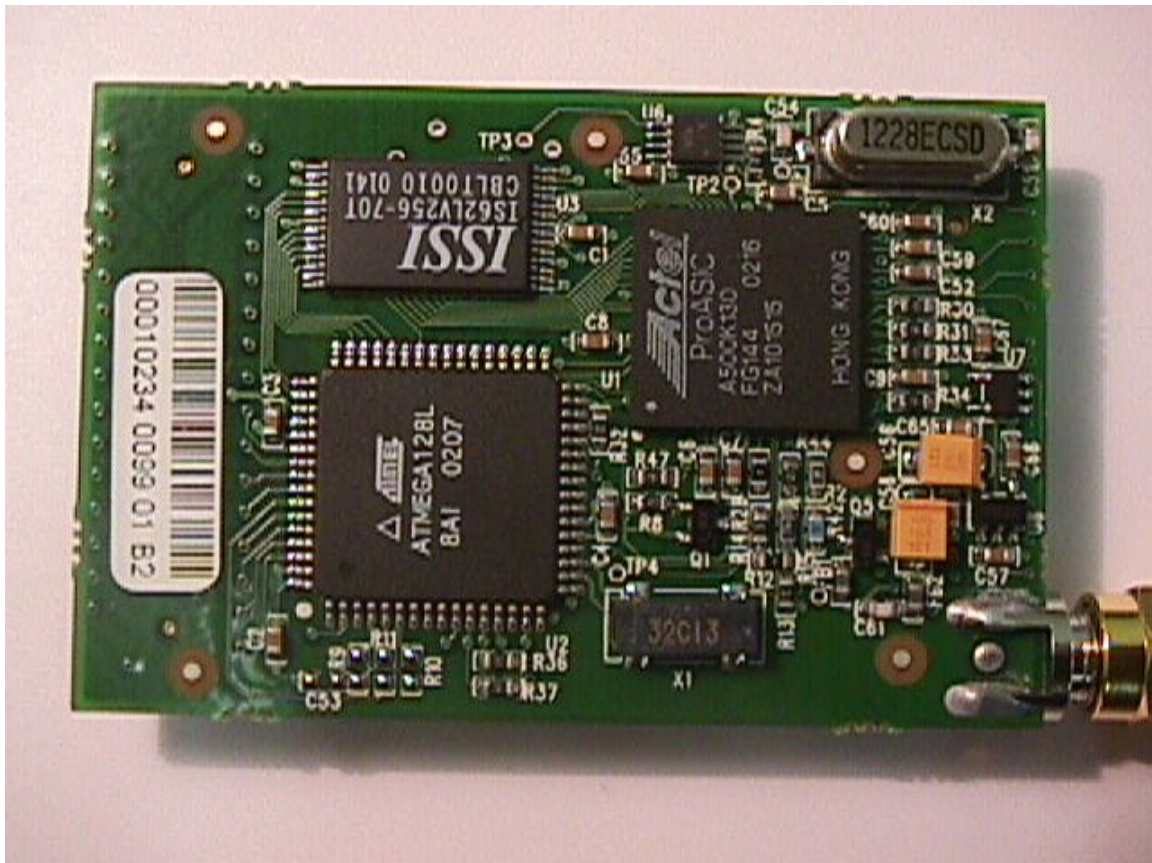
**Ember Corporation**  
**EmberNet Networks and Ember Enabled Products**  
**FCC ID#: QML-EMBER2002**  
**Canada ID#: 4415A-EMBER2002**

**Photo Three**  
**EmberNet Module and Close Up of RF Section with Shielding Removed**



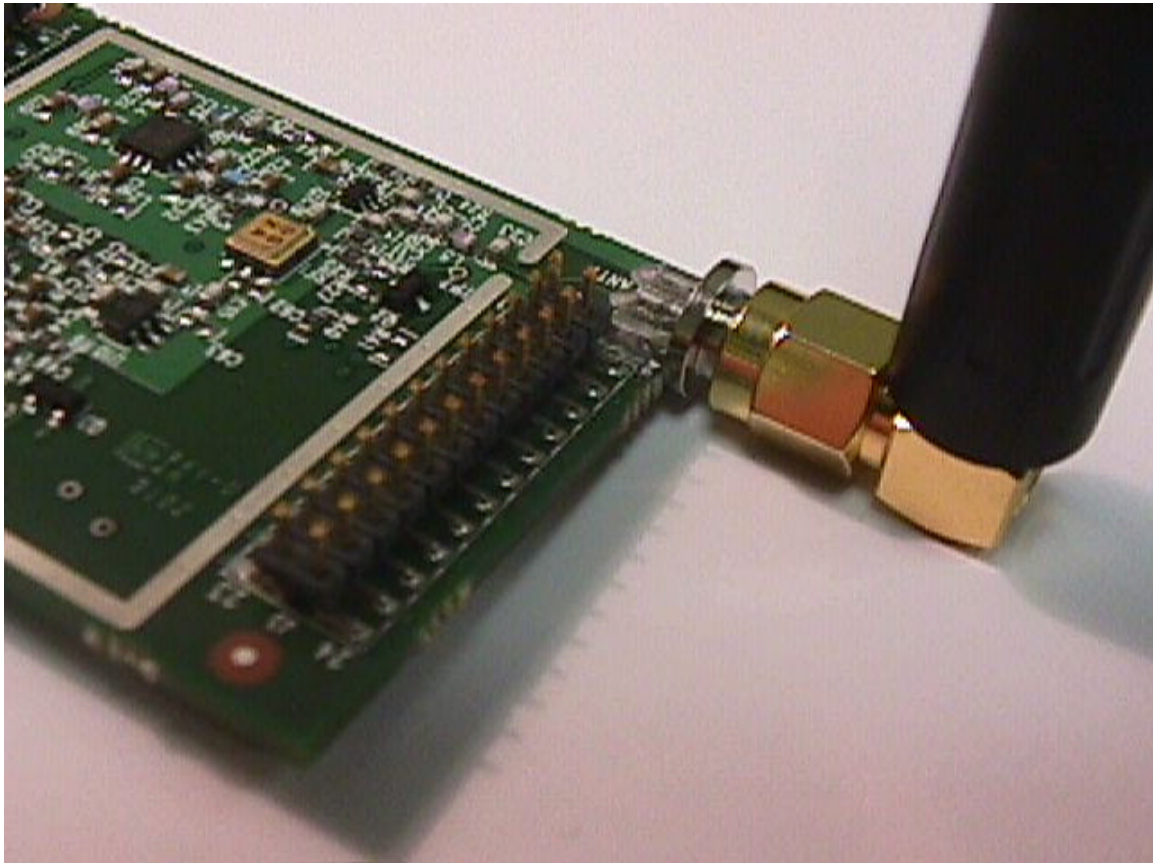
**Ember Corporation**  
**EmberNet Networks and Ember Enabled Products**  
**FCC ID#: QML-EMBER2002**  
**Canada ID#: 4415A-EMBER2002**

**Photo Four**  
**EmberNet Module and Close Up of Flip Side of PCB**



**Ember Corporation**  
**EmberNet Networks and Ember Enabled Products**  
**FCC ID#: QML-EMBER2002**  
**Canada ID#: 4415A-EMBER2002**

**Photo Five**  
**EmberNet Module and Close Up of Antenna Connection and Pin Connector**  
**used for Power and Control Lines**





**Ember Corporation**  
**Net Networks and Ember Enabled Products**  
**FCC ID#: QML-EMBER2002**  
**Canada ID#: 4415A-EMBER2002**

**Photo Six**  
**EmberNet Module and Close Up of Input / Output Control Pins**

