

Test setup photos

Radiated Emission

- Below 30 MHz (9 kHz ~ 30 MHz)

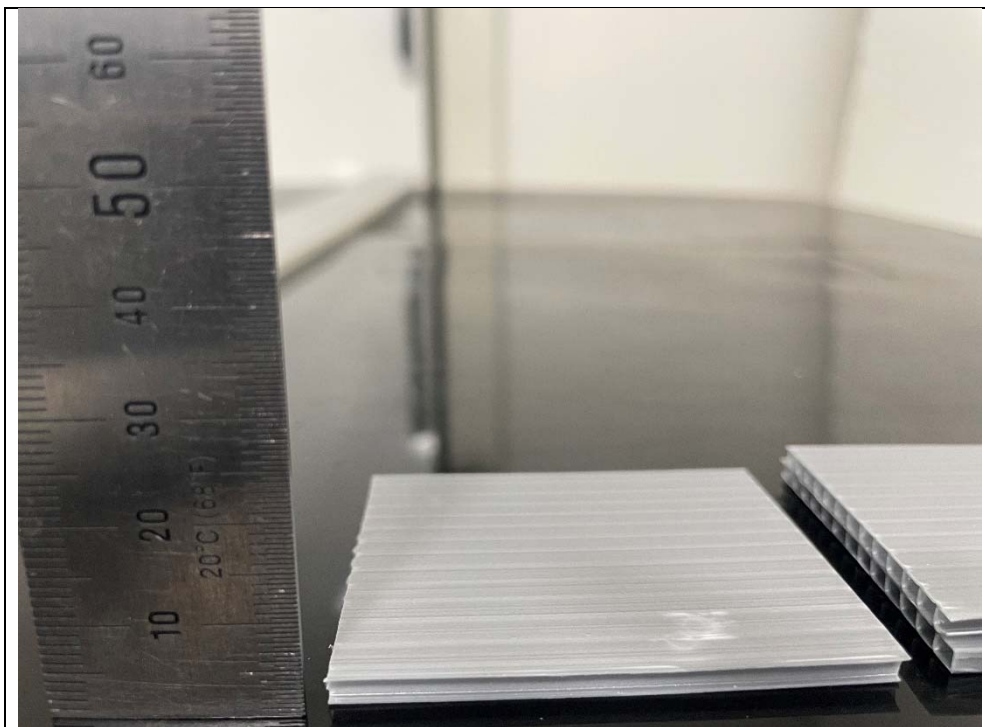


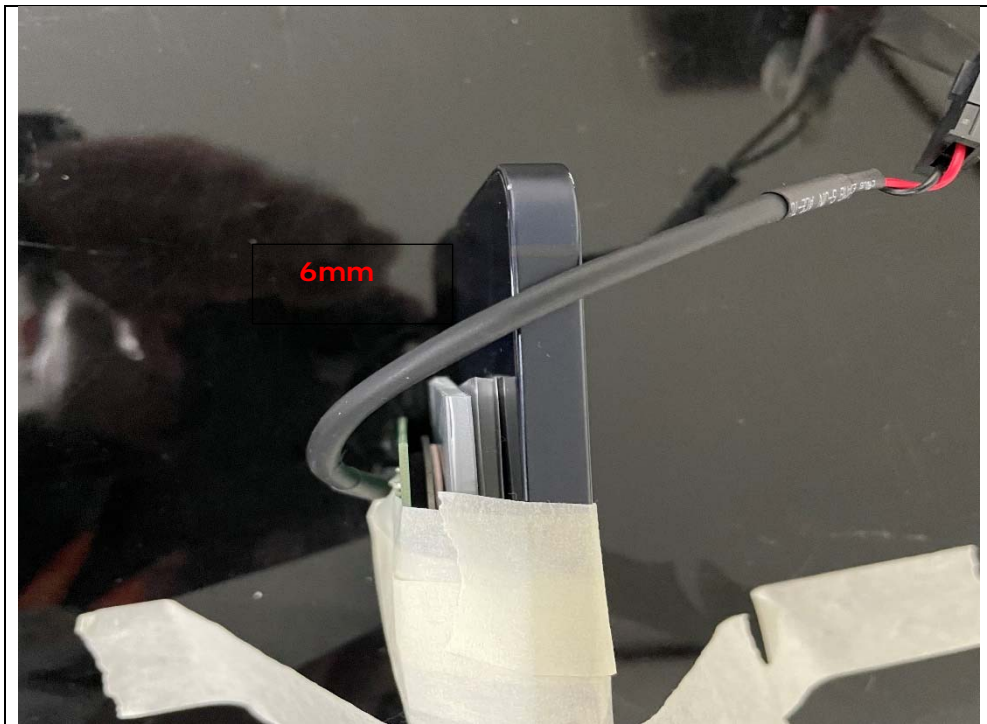
- Below 1 GHz (30 MHz ~ 1 GHz)



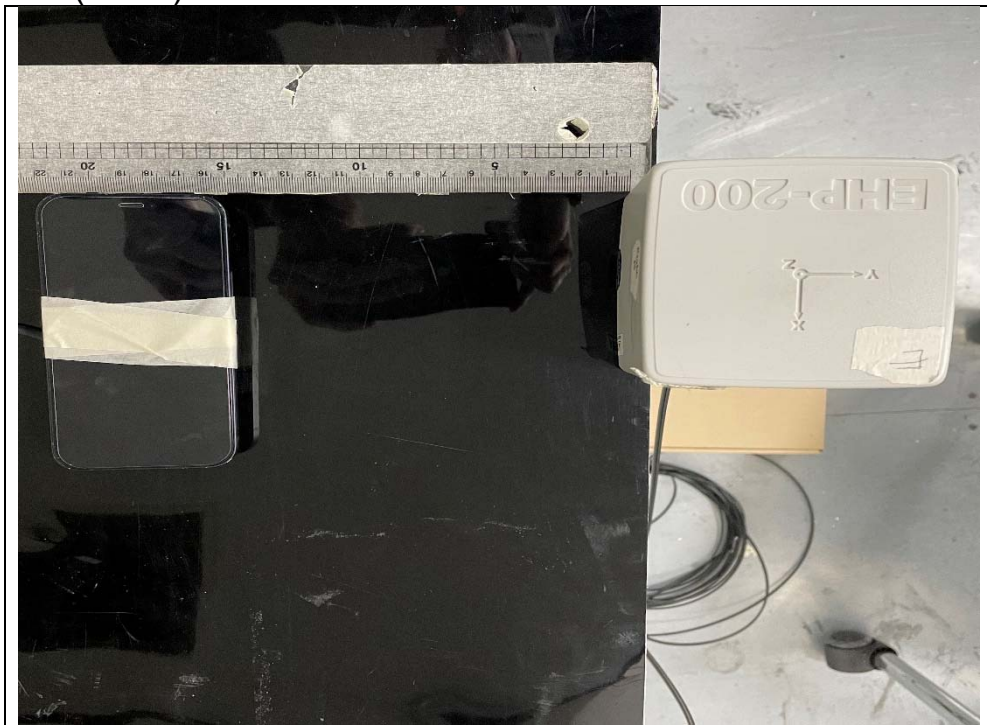
FCC RF Exposure

- **(Distance : 15cm surrounding the device and 20cm above the top surface)**
Worst position of isotropic probe: E-field = B-side, H-field = A-side.
- EUT and Tag distances were all verified at 0(Direct), 3, 6, and 9 mm.
The worst condition is 6 mm.





- EUT A -Side (Front)



- EUT B -Side (Rear)



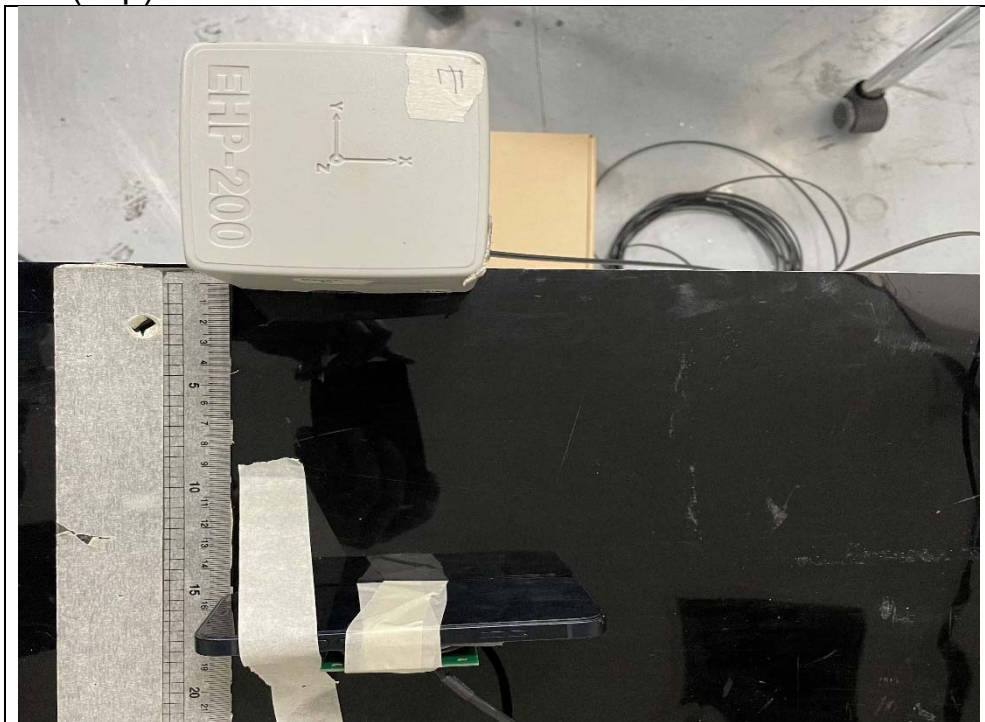
- EUT C -Side (Right)



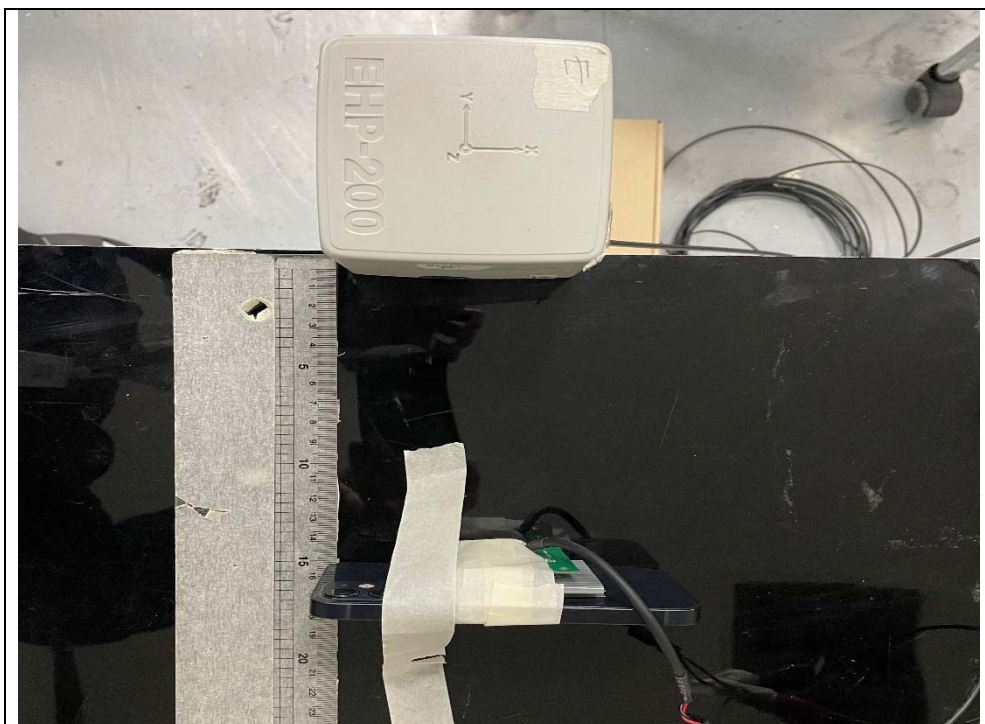
- EUT D-Side (Left)



- EUT E -Side (Top)



- EUT F -Side (Bottom)



- Conducted Emission

