



Wireless Wheel & Ball Mouse

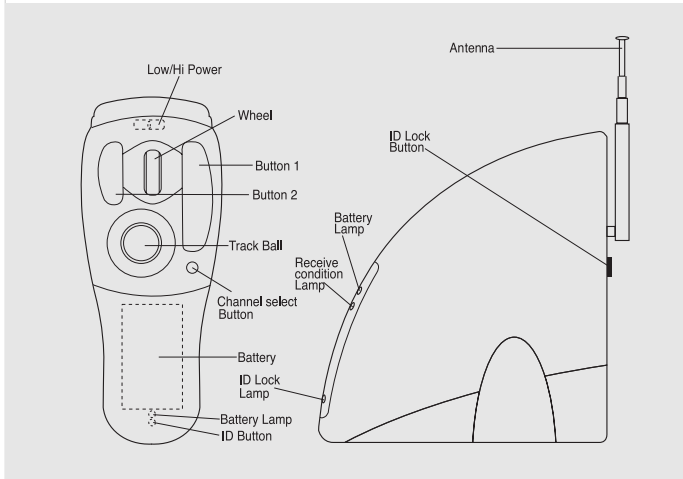
UNC-800 User's Manual



Caution

Changes or modifications not expressly approved by the party responsible for compliance could void the user's authority to operate the equipment.

NAME OF PARTS



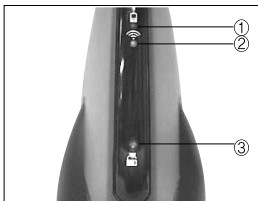
Spaceball Mouse

- Low/Hi Power : (Low : 2~3M, Hi : 6~7M) Select, Power Button
- Button1 : enter key
- Button2 : shift key
- Wheel : scroll & zoom, page up/down
- Trackball : move cursor
- Battery Holder(Back) : AAA type x 2
- Channel Select Button
- ID Button : It will be change ID when every short press on it

Receiver

Spaceball operation has verify range depend on the receiver position because of radio frequency.

- **Caution** : Leave alone in the place where it does not have the metal material or the interference of the electric wave.
- **Battery lamp** : It will be lighting when the battery low Condition.
- **Receive condition lamp** : It will be lighting when the SPACEBALL work normally.
- **ID & Channel Lock lamp** : It will be green lighting when the Receiver is locked by lock button.
- **ID & Channel lock button** : It make lock and unlock ID & Channel. Button locate Receiver back side. It is useful function when the other mouse conflict.
- **Antenna**.

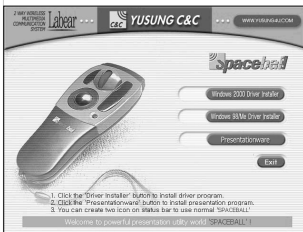


- ① Battery lamp
- ② Receive condition lamp
- ③ ID & Channel Lock lamp

HOW TO INSTALL SPACEBALL PROGRAM

NOTE

- First, check the operating system of your computer (i.e. \windows 98/ ME/ 2000)
- If your computer uses a USB port first time, it will require hardware information, when the spaceball receiver connect to USB port to make computer accept USB port, get the '**WINDOWS Installation CD**' that came with your computer ready to activate USB port and then install Spaceball program.



- * Our program CD put on CD driver. It will start auto-run, you can see Install panel on monitor
- ** You could click 'DRIVER SETUP' and progress Install



Install driver in 'Windows 98/ ME and Windows 2000'

If your computer uses USB port first time, it requires new hardware information. When a message pops up saying it needs Windows CD for an update, insert Window Installation CD that comes with your computer when it was purchased. Then start installing Windows CD, according to the instruction displayed on your computer. After the installation, check for 'HID-compatible mouse' from the mouse icon in the control panel. 'HID-compatible mouse' indicates that USB port is activated. Keep 'Wireless Mouse Spaceball Installation CD' handy for installation.

1. First, hook up Spaceball receiver to USB port.
2. Insert "Wireless Mouse Spaceball Installation CD" in the CD-ROM drive. (Upon inserting, the program starts installing itself through Autorun function.)
3. Choose between 'Windows98/ME driver installer' and 'Windows 2000 driver installer' button from the menu bar on the right side of installation window, depending on your operating system and then click.
4. Read the explanation on the window, while proceeding the installation. Reboot your system, when installation is complete. (After Install finish, you must restart PC)
5. Once the installation is normally completed, "Spaceball" icon similar to a dot & battery should be on the left side of the task bar and starting menu.



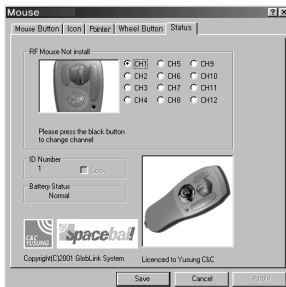
HOW TO INSTALL SPACEBALL PROGRAM

To check the status of USB port

1. On the window, click
start → Settings → Control panel → System → (Hardware) → Administrative tool → Universal direct bus controller
2. To check the property
[Company Name] PCI to USB Universal Host Controller, USB Root Hub
USB port is operational, if the above message shows up.

To check the mouse driver and reinstalling it

1. On the window, click
Start → Settings → Control panel → System → (Hardware) → Administrative tool → Mouse
2. To check the property
Information on the existing mouse (i.e.: PS/2 Compatible mouse port)
The driver is properly installed, if the above information comes on.
*** HID-compatible mouse (Spaceball RF Mouse for Windows 2000)**
3. If the property shows other information than ‘HID-compatible mouse’ or ‘Spaceball RF Mouse’
 - 1) Double-click **Drive Name** to open up ‘property’.
Click ‘**driver**’ button on the property.
 - 2) In a new window, click ‘**Driver update**’ button at the bottom of the window. In the next window, click “**Next**” to bring up a list, then press “**Select a driver**” and “**Next**”.



USE & FUNCTION

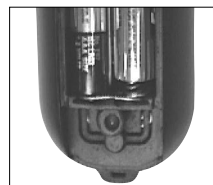
Battery discharge it checks

• Battery exchange time

- Battery Icon which is indicated in the monitor show in red character 'X' on battery shape.
- On Spaceball Status panel, it is appear 'Low battery'
- The switch of the mouse it lets in ON condition, the ramp on the back of mouse continues 3 second degree, it is a good condition.

• Shift method

Fix the new dry cell battery correct direction and insert.



Battery checks lamp

Auto save mode

For the save battery, automatically power off when the mouse do not use. Spaceball work normally if the ball move or click any button on it.

Changing ID and CH (Channel)

* Make sure to turn off "Lock Button" before changing ID and CH.

1. Go "**Start → Settings → Control Panel → Mouse → Status**" and activate the mouse.
2. Open up a battery cover and click ID button. Every short press increases ID.
3. Every short press on the CH (Channel) button in order to changes CH (Channels).
4. Select ID and change CH (Channel).
5. Press "Lock button" on the back of Receiver to confirm the changed receiver ID and CH (Channel).

Going back to default ID and CH (Channel)

1. When Lock light comes on, press Lock lamp on the back of receivers to delete the current settings.
2. Open up the battery cover, press ID button for 4 seconds to turn on the red light.

Change ID & Channel

ID and channel can not change if lock button work (Green lamp on receiver show lock condition and 'Status' panel have lock information).

** The installation path in Windows 98/ME and Windows 2000 is basically the same. However, the words in the mouse of the control panel are different. Windows 98/ME cases Spaceball "HID-Compatible mouse", while Windows 2000 defines it as 'Spaceball RF Mouse'.*

ASSESSING AND SOLVING PROBLEMS

Conditions	Check	Application
Mouse doesn't move	Is receiver plugged into USB port?	Plug Spaceball receiver into USB port.
	Is the power switch turned off?	Turn on the power switch into Hi/Low.
	Are batteries inserted properly?	Check positive (+) and negative side (-) of batteries.
ID and CH (Channel) don't change	Is the light on Lock lamp?	Press Lock button on the back of receiver to turn it off.
	Is drive installed properly?	Read "how to install and change drives" section.
Mouse stops moving all of a sudden	Check ID/CH?	Go back to default ID/CH.
Mouse moves of its own or at random	Was an interruption from other mouse?	Differentiate ID/CH of your mouse from a mouse working in a close proximity.
Mouse distance is too short	Is mouse set at HI?	Low : 2~3M, Hi : 6~7M
Light on the receiver is on, but cursor doesn't move	Is Spaceball receiver installed properly? Drive is installed properly, but mouse doesn't move.	Read how to install a drive. Go back to default ID/CH.

 <http://www.yusung4u.com>
YUSUNG C&C YUSUNG C&C Ltd.

Yu Sung Bldg 865-13, Bang Bae-Dong,
Seo Cho-Ku, Seoul 137-060 Korea
TEL: (822) 533-6660 (Rep.) FAX: (822) 594-4279
E-Mail: sales@yusung4u.com