

# 사용설명서

**ACCESS DREAM**



Super Micro Systems

**USB STORAGE DEVICE**

<http://www.smtechkr.com>



## TABLE

Product Layout  
Parts Name & Explain  
Feature  
Specification  
Device Set-Up & Driver Install  
FORMATTING  
Password & Change  
Booting Disk making  
Safe Device Removing  
precautions  
Sertification & Verification  
After Service(A/S)  
Warranty

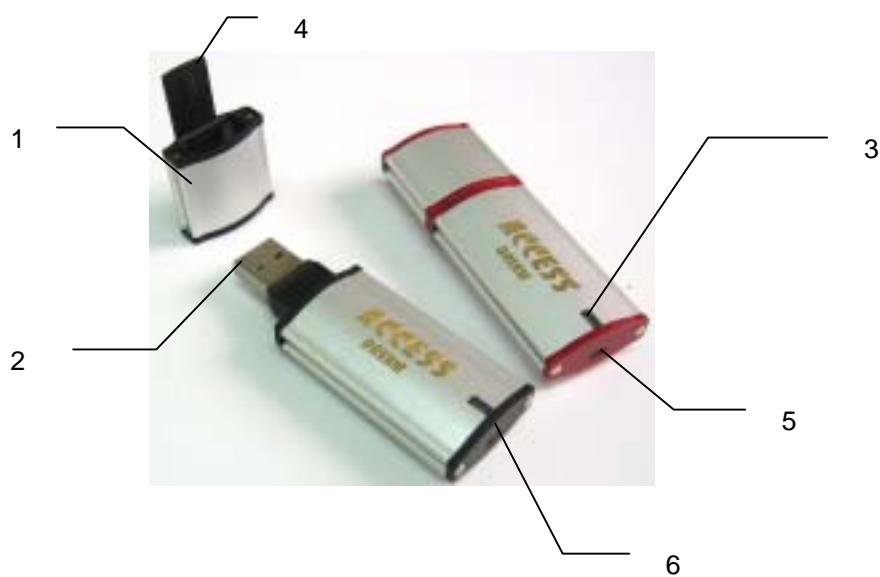


## PRODUCT LAYOUT



ACCESS DREAM Main Part  
Supply CD  
USB Extension Cable  
Potable Necklace  
Manual book



## PARTS NAME & EXPLAIN



1. CAP: Protecting USB Connector area
2. USB Connector: Connecting Computer & Connector
3. LED
  - 1) Green LED light: Standby for Reading/Writing as connecting Computer.
  - 2) Orange LED light: On Data Reading/Writing

Caution): Data may be damaged if device is removed with Orange LED light on.
4. Holding Clip: Safely holding the device in Bag or Pocket.
5. Locking Switch
  - 1)  : Reading/Writing Available
  - 2)  : Only Reading[No writing]
6. A ring to put in a portable necklace.



## Feature

1. **Match refined design with high-qualified material of Aluminum.**
  - Using classical Aluminum material, discriminated product with strong, luxurious touch and refined design.
2. **Convenient & Mobile Storage Device.**
  - Storage space made of Memory Chip, handy and useful storage device as like a Hard Disk.
3. **No need Power**
  - Do not need additional power supply by using USB Bus's Power.
4. **Fast Transmission speed using USB Port.**
  - Provide high-speed transmission by using USB Port (12 Mbps Max)
5. **Butting Disk Function**
  - Independent butting support available same as FDD, CDR, HDD.
  - Using butting function, same as like producing butting disk.
  - (cf: Only available by Main-Board supporting USB butting.)
6. **PASSWORD**
  - S/W security function, unable to access to data in the device by unauthorized people. Enter your password to reach your data. You have to format if you lose your password.

## 7. Writing Forbidding switch ( )

Not allow writing, protecting data from virus infection & damage by user's mistakes.



### Specification

Memory Capacity	16MB, 32MB, 64MB, 128MB, 256MB
Interface	USB 1.1 Version Spec
Operating(OS)	MS-DOS, Win98/SE/ME/2000/XP, Over Mac 8.6, Linux 2.4, Win CE 3.0
Apply	All computers providing USB port
Transmission Speed	Read : 900 Kbytes/sec                      Write : 700 Kbytes/sec
Data retention	10 Years
Power	USB Bus-Powered ( 4.75V    5.25V )
Size	75mm X 26mm X 12mm (including CAP)
Weight	29g



### Device Set-Up & Driver Install

#### 1. Device Set-up

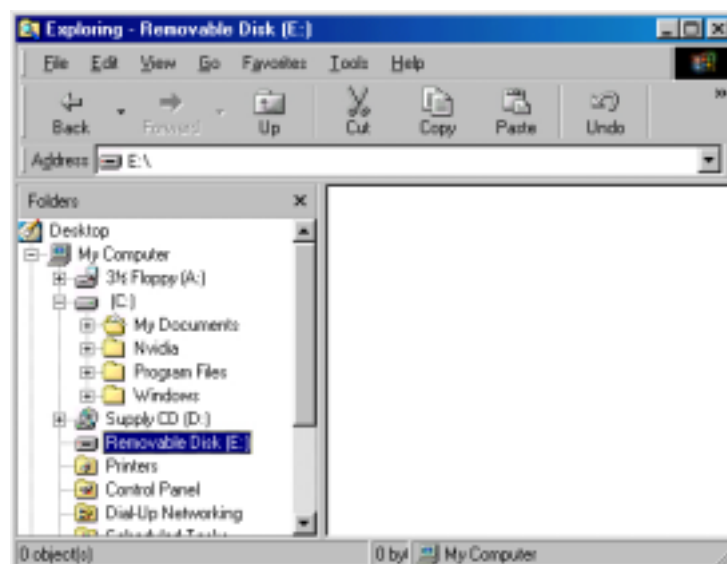
- 1) [Picture 1] Direct connection to Computer USB port.  
[Picture 2] Use an extension cable between computer and the device.
- 2) Refer to [Picture 3] recognizing through Removable Disk after connection.  
Caution). Not showing text in disk on Code Mode.  
Must get code authentication to access into the disk.



[Picture 1] Direct connect



[Picture 2] Extension cable



[Picture 3] Removable Disk on Windows

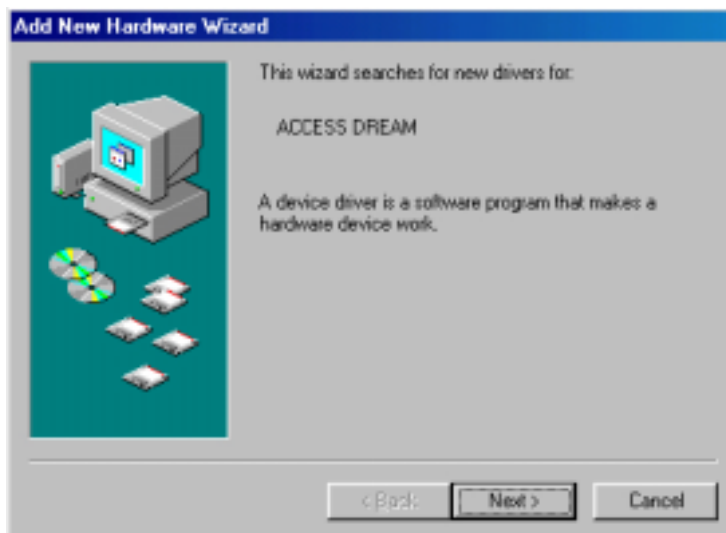
## 2. Driver Install

- Do not need to install the driver on any OS, except Windows98, Windows98 SE.
- Use Supply CD provided for Windows98, Windows98 SE.

Caution). If unable to automatically install on Windows9X(OS), install the driver manually.

### 3. Windows98 Driver Manually Installing

- 1) When ACCESS DREAM first connect in the [Picture 4].  
Click 'Next' button.



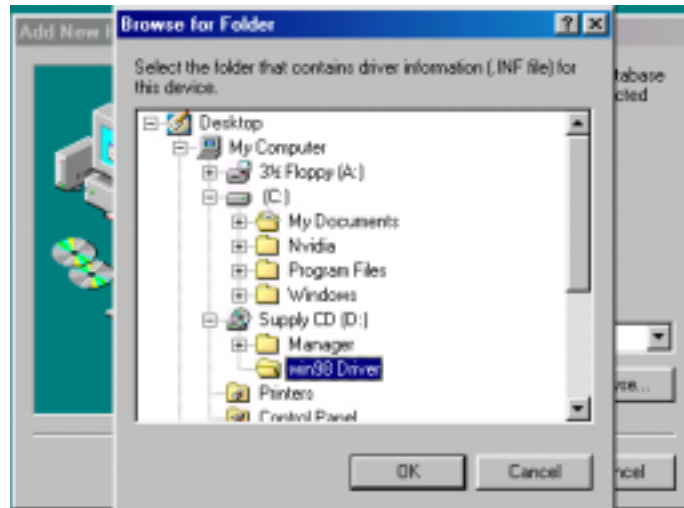
[Picture 4] As ACCESS DREAM first connected

- 2) [Picture 5] Select 'Search for the best driver for your device (Recommended)' and Click on 'Next' button .

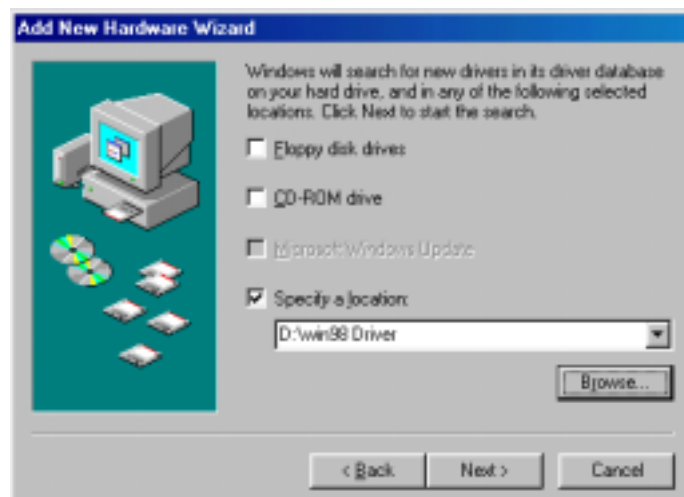


[Picture 5] Selection of Deriver Search

- 3) [Picture 6]. Select 'Specify a location' and locate where the drivers is by 'Browse', [Picture 7] Click 'Next' button.

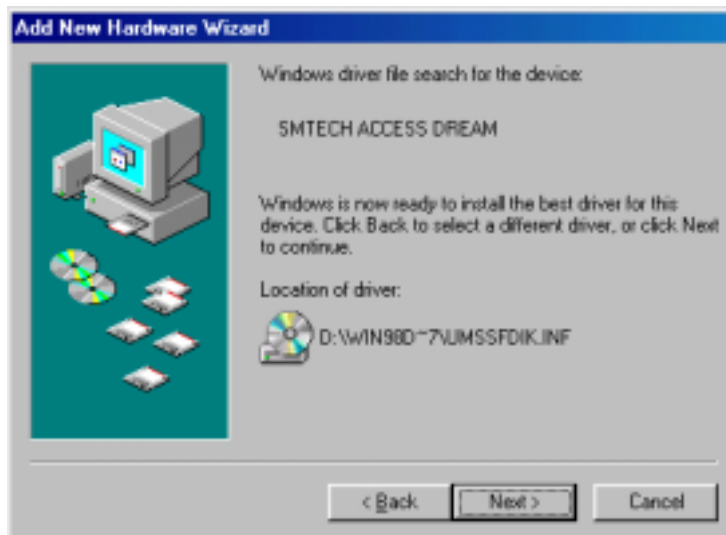


[Picture 6] Searching driver location



[Picture 7] Appoint Driver Location

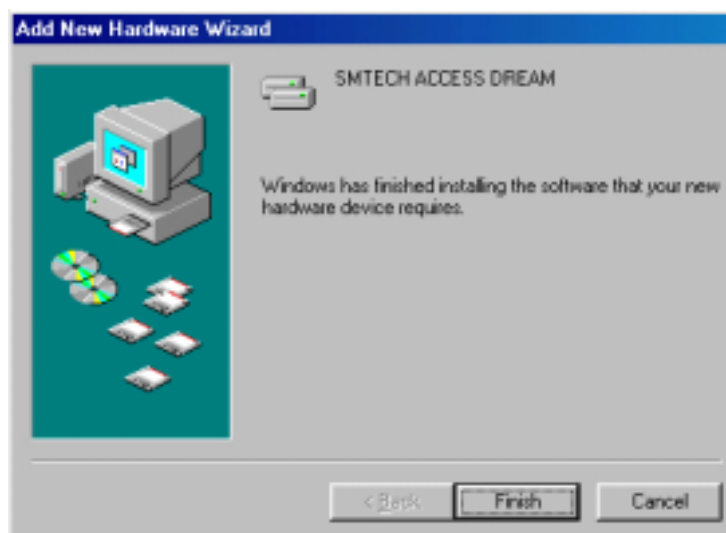
- 4) Appear a window as found a driver on [Picture 8], otherwise, check the location back in No 3).  
Click 'Next' button & Install driver on 'Installing Process Window'.



[Picture 8] Driver Installation

#### 5) Complete Driver Installation

Click 'Finish' button to disappear & wait for Driver installation of ACCESS DREAM [Picture 9].



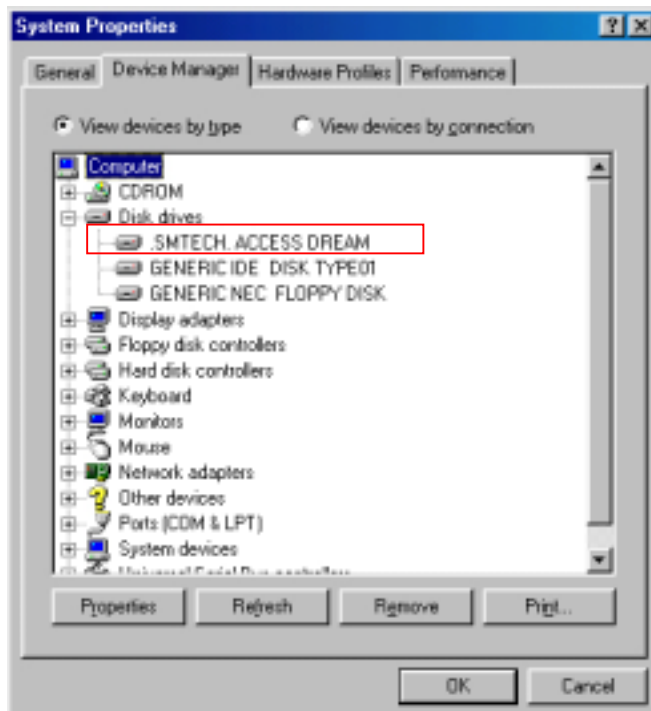
[Picture 9] Complete Driver Installation



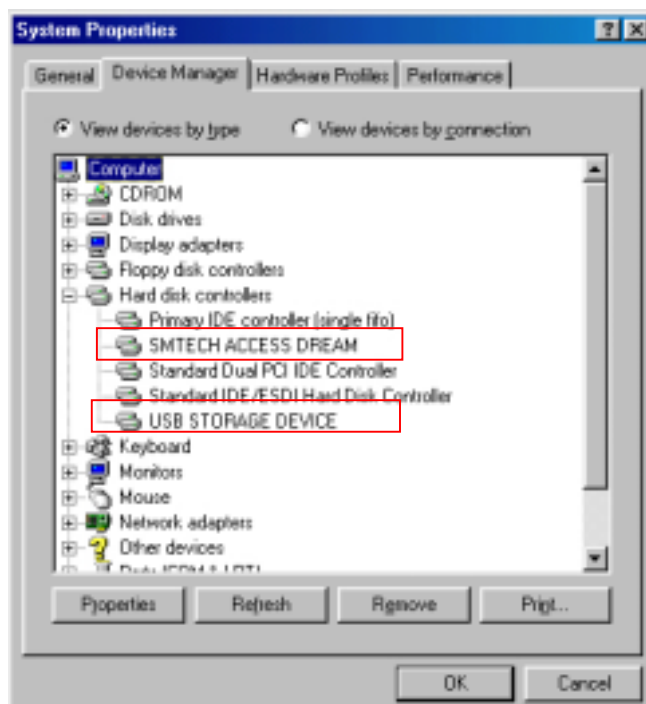
#### 6) Confirm Driver Installation.

Right Installation of ACCESS DREAM—‘Start Settings Control Panel System Device Manager’.

Both [Picture 10] and [Picture 11] need for operating.

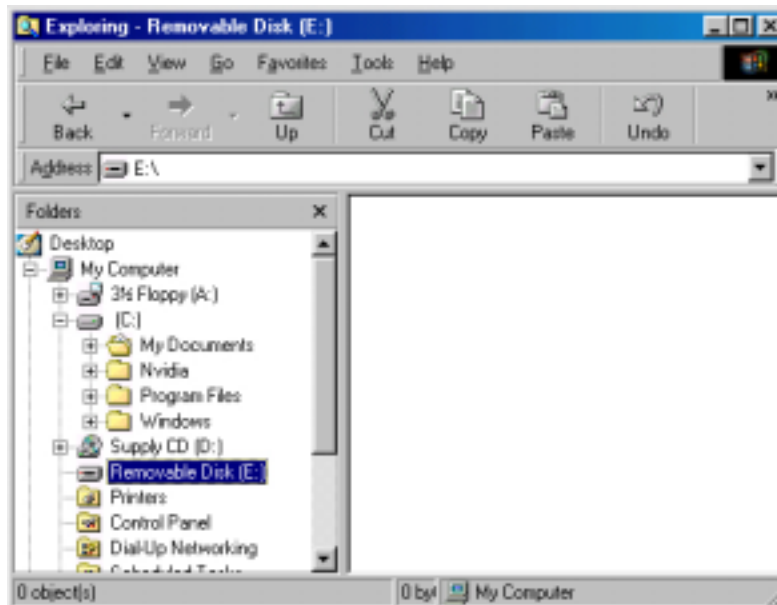


[Picture 10] Driver Installation Confirm



[Picture 11] Driver Installation Confirm

7) Open Windows Exploring and Removable Disk [Picture 12] comes out.



[Picture 12] Removable Disk on Window Searcher



## FORMATTING

[When you need Formatting? ]

- When disk clearing of lots of bad blocks in Flash Memory.
- Bad block generated after "Quick Format".
- Need to create new Password

(All files in the device will be deleted and the basic password is "0000".)

1. Connect ACCESS DREAM into USB.
2. Execute D:\Manager\English\Manager.exe in Supply CD and appear [Picture 13].



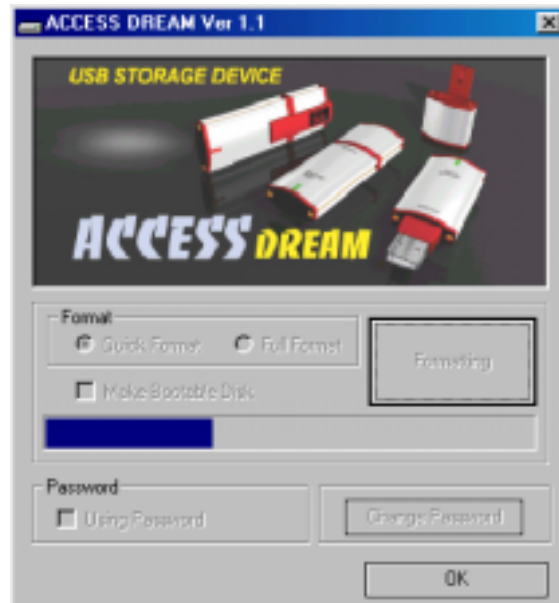
[Picture 13] Initial Manager Program

Caution). If 'Plug in ACCESS DREAM!' comes out, ACCESS DREAM USB port is not connected, then plug out and try again.

3. Select 'Quick Format' or 'Full Format' and click 'Formatting' button.  
(Taking for a while with 'Full Format'.)  
Click 'OK' button if [Picture 14] comes up.



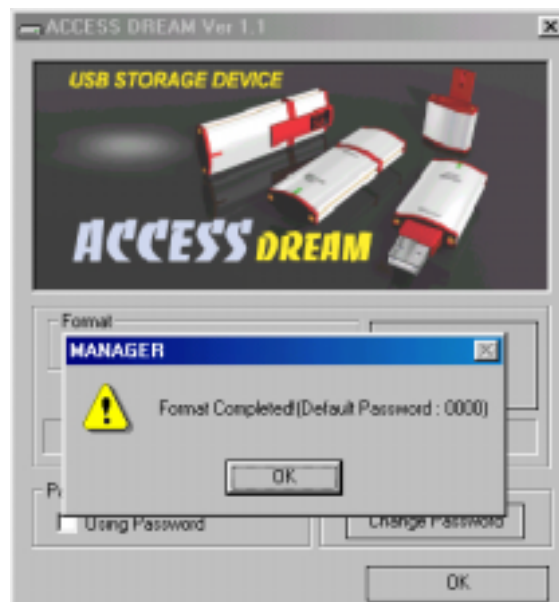
[Picture 14] Caution Message



[Picture 15] Format Processing

Caution) Please Back-up important data to prevent all files from deleting by Initializing. .

4. [Picture 16] comes out when complete formatting.



[Picture 16] Complete Format



## Password & Change Password

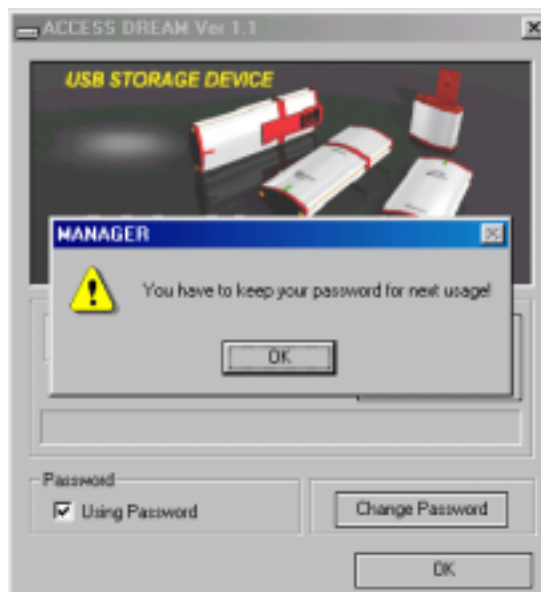
### 1. Password

- 1) Connect formatted device to USB port.
- 2) Execute D:\Manager\English\Manager.exe in Supply CD provided  
[Picture 17] comes up .



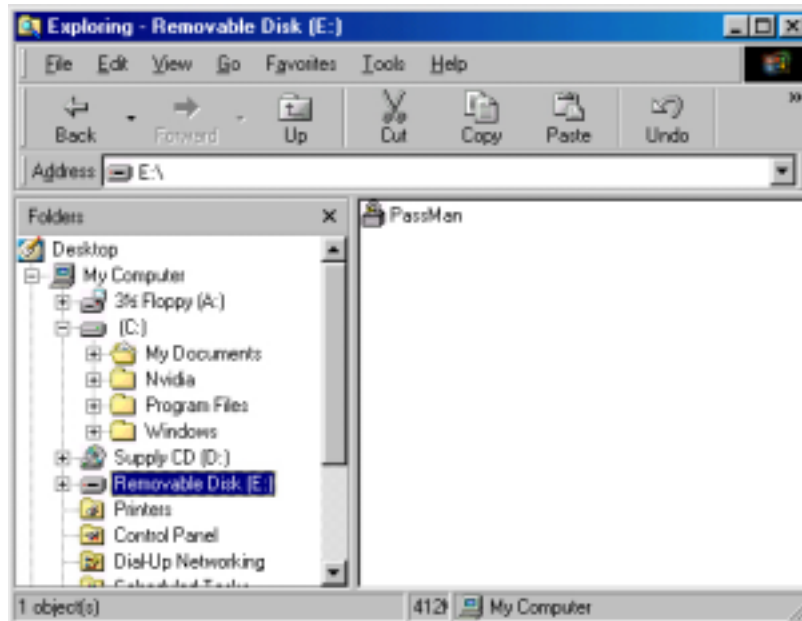
[Picture 17] Initial Manager Program

- 3) Select 'Using Password' to use password function.  
Click 'OK' button [Picture 18] and try.



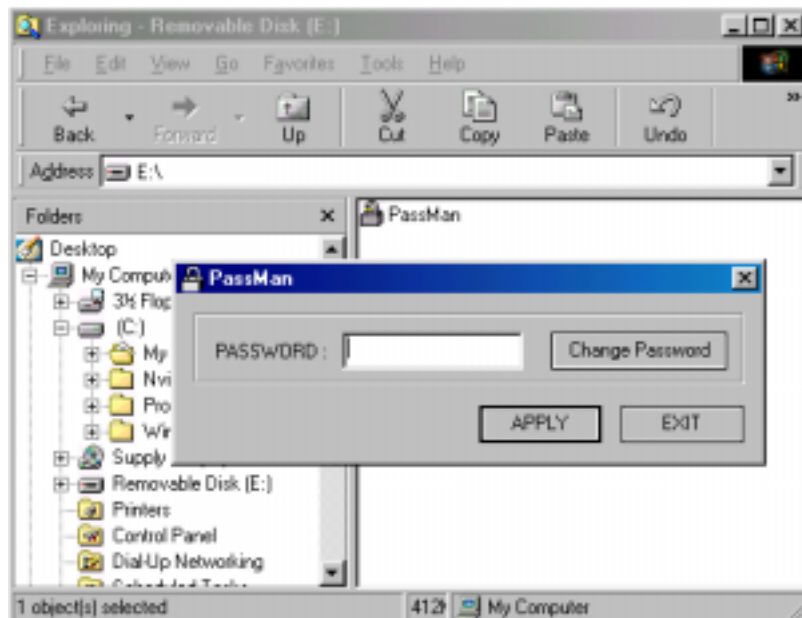
[Picture 18] Security Set-up

- 4) Click on 'Removable Disk' [Picture 19] after Plug out & in ACCESS DREAM.



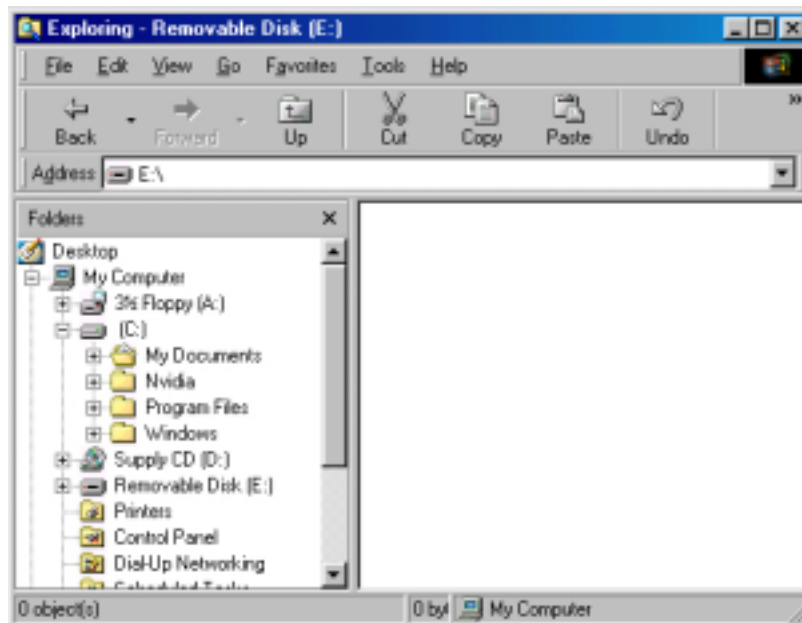
[Picture 19] Screen when using password

- 7) Execute 'PassMan.exe' on right corner and click 'Apply' button after Inserting password [Picture 20].  
(Initialized password is "0000")



[Picture 20] Enter Password

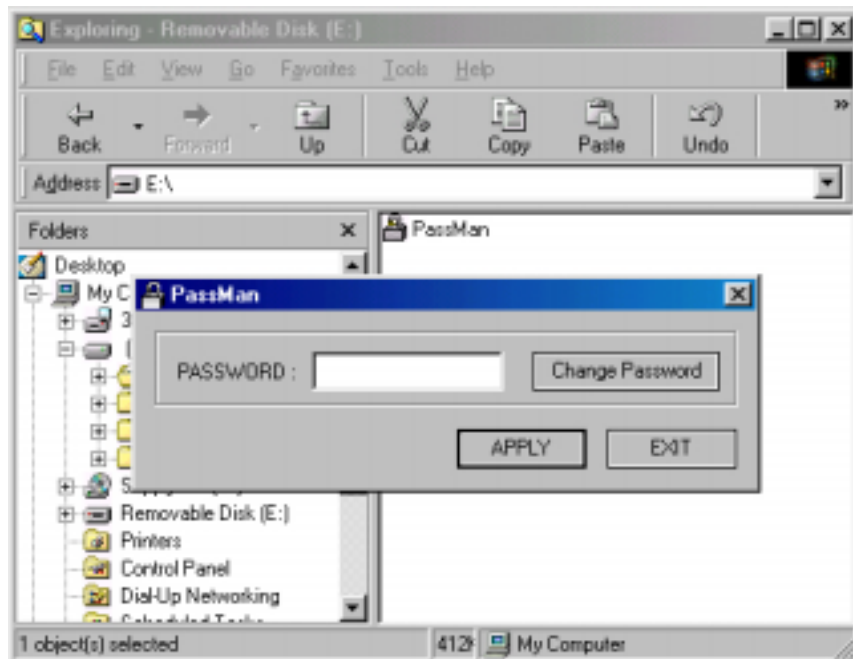
- 6) Disappear [Picture 20] with completion of Log-In,  
available to use normally [Picture 21].



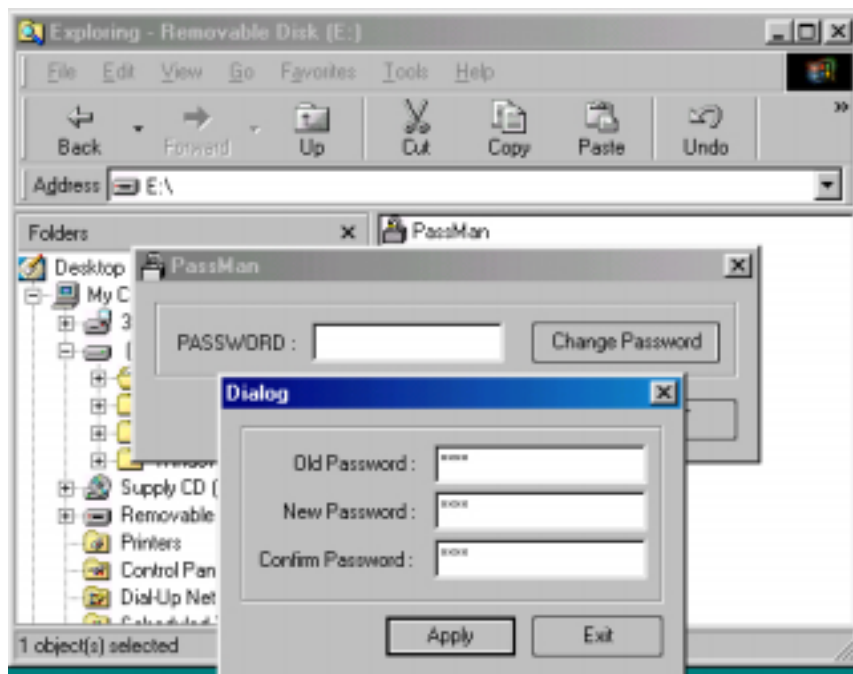
[Picture 21] Complete Log-In

## 2. Changing Password

- 1) Connect device password inserted to USB port.
- 2) On password mode, Execute 'Passman.exe', and then [Picture 22] comes up.  
Click 'Change Password' button and then change password [Picture 23].



[Picture 22] Click "Change Password"



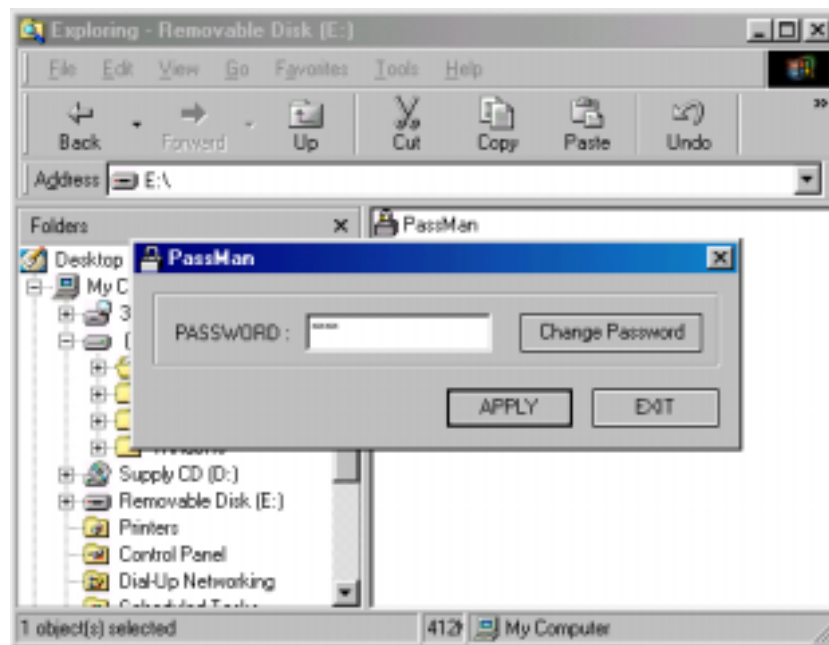
[Picture 23] Enter password you want



- Old Password : Enter former password (Initial password "0000")
  - New Password : Enter new password( up to 8 figures numbers)
  - Confirm Password : Re-enter the New Password (confirm password)
- Caution). Only numbers available for password.

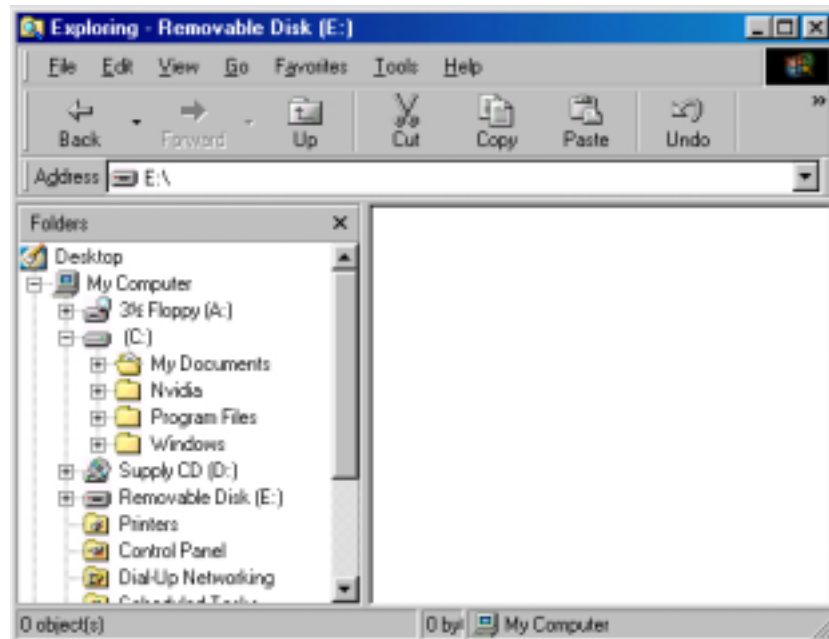
3) Enter new password in [Picture 23] and click 'Apply' button.

[Picture 24] comes out, re-enter the password and click 'Apply' button.



[Picture 24] Enter new password

4) [Picture 24] disappears after Log-In and then normal use on [Picture 25].



[Picture 25] Completion Log-In

- 5) If changing password out of Password Mode, execute D:\Manager\English\Manager.exe in Supply CD provided, then [Picture 26] comes out.

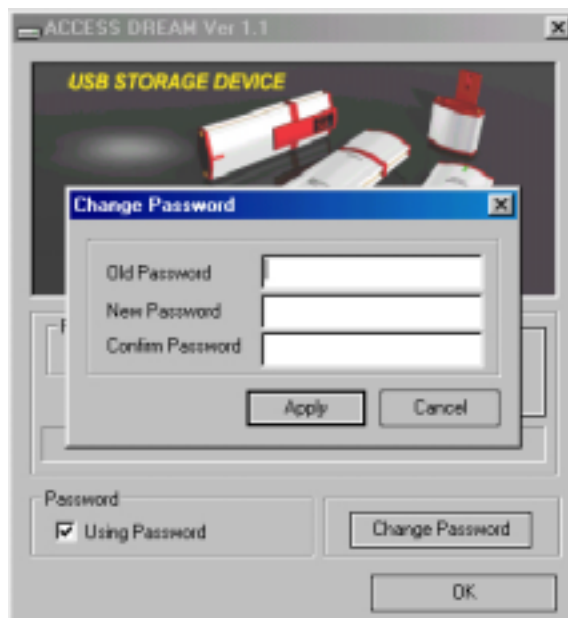


[Picture 26] Initial Manager Program

- 6) Check 'Using Password', then, [Picture 27] with caution message comes out. Click 'OK' button & 'Change Password' next, then, [Picture 28] comes out.



[Picture 27] Checking "Using Password"



[Picture 28] Click "Change Password" button

- 5) Enter "0000" in 'Old Password'. Enter your new password in 'New Password' & 'Confirm Password'. (cf: up to 8 figures of numbers only)

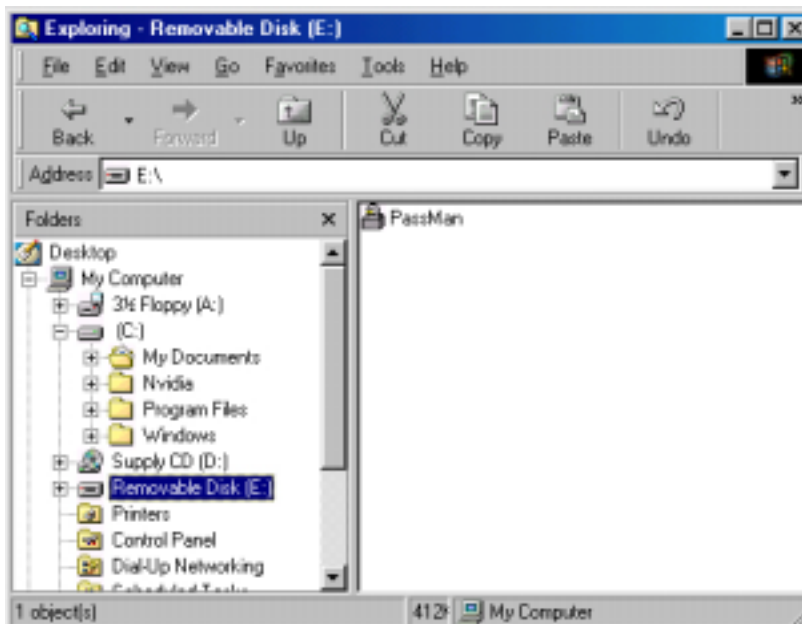


[Picture 29] Enter new password

Enter new password in [Picture 29] and Click 'Apply' button .  
Close the Manager Program.

- 6) Plug out and in ACCESS DREAM and click 'Removable Disk'.

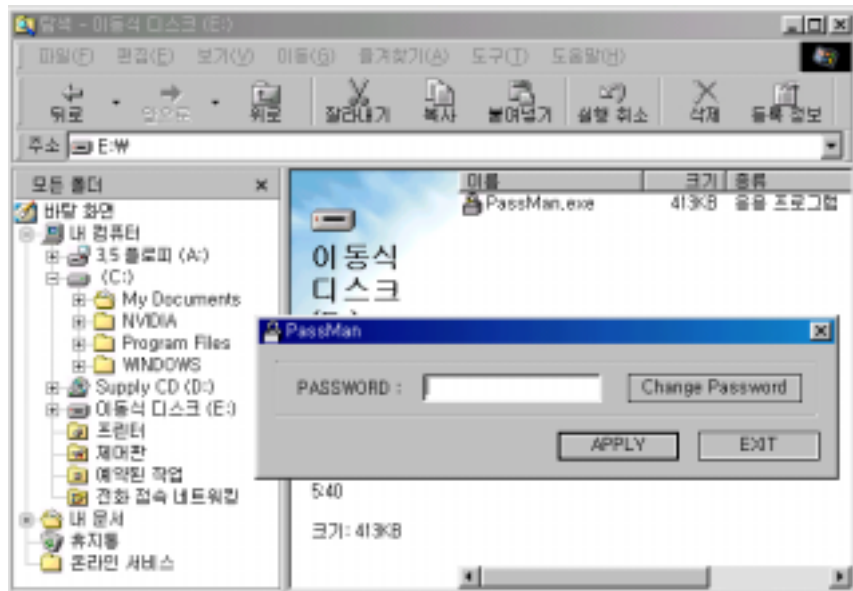
[Picture 30] comes out.



[Picture 30] Click Removable Disk

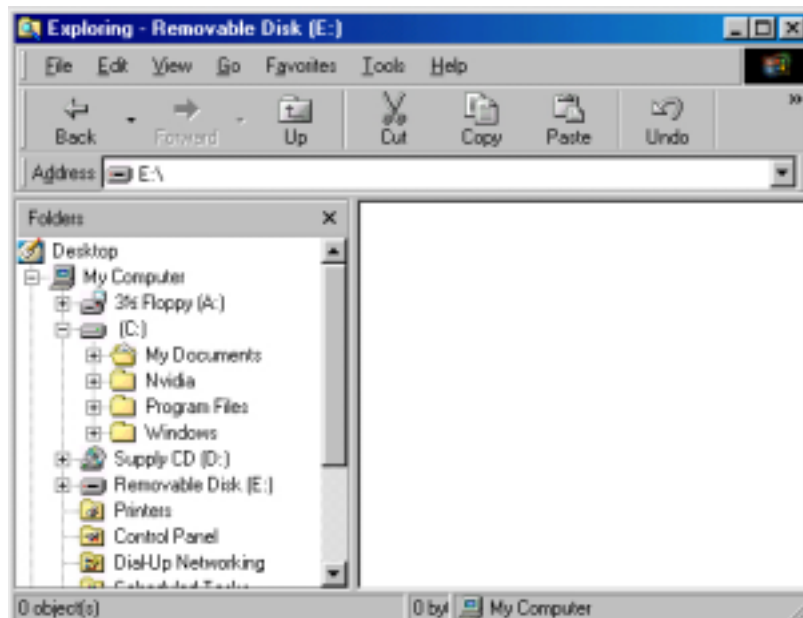
7) Execute 'PassMan.exe' and then [Picture 31] comes out.

Enter new password and click 'Apply' button.



[Picture 31] Enter Password

8) Disappear [Picture 31] after Log-In and [Picture 32] comes up in normal use.



[Picture 32] Complete Log-In

## Booting Disk Making

This function is only available on Windows 98.

Format after selecting 'Make Bootable Disk' in [Picture 33].

(It is unable to select over Windows 98 versions [Picture 33], which is inactive.)

Booting after selecting 'USB ZIP' from Boot Device followed by formatting.

Make sure to use after deleting 'Using Password' option if you want booting by this device, because files relating Booting are not written on Password Mode but written on Data Mode. In addition, to make Bootable Disk, you have to select the option of Booting Disk Making Option When windows set-up, otherwise no file exist on the task of making booting disk. In this case, after above procedures, save files in floppy disk into Access Dream has same function as booting disk.



[Picture 33] Initial Manager Program

## Safe Device Removal

1. Windows 98 : Make sure to remove when red LED light off.
2. Windows ME,2000,XP : Remove after executing 'Device Removal' right bottom of Windows
3. Mac : Remove after wasting into Rubbish Bin
4. Linux : Remove after executing 'unmount'

## precautions

1. Do not remove ACCESS DREAM when Orange LED light on, not to lose data.
2. Make sure to remember password to access data saved in the device.
2. Available to use utilities of only one ACCESS DREAM to operate.

SM Tech Co.,Ltd is not responsible for any problems occurring by using many devices at the same time.

5. SM Tech Co., Ltd is only responsible for losing data caused by fundamental manufacturing problems. .

## Certification & Verification

This device complies with part 15 of the FCC Rules. Operation is subject to the following two conditions : (1) This device may not cause harmful interference, and (2) this device must accept any interference received, including interference that may cause undesired operation.

**Caution :** Any changes or modifications in construction of this device which are not expressly approved by the party responsible for compliance could void the user's authority to operate the equipment.

**Note :** This equipment has been tested and found to comply with the limits for a Class B digital device, pursuant to part 15 of the FCC Rules. These limits are designed to provide reasonable protection against harmful interference in a residential installation this equipment generates, uses and can radiate radio frequency energy and, if not installed and used in accordance with the instructions, may cause harmful interference to radio communications, However, there is no guarantee that interference will not occur in a particular installation. If this equipment does cause harmful interference to radio or television reception, which can be determined by turning the equipment off and on, the user is encouraged to try to correct the interference by one or more of the following measures :

- Reorient or relocate the receiving antenna.
- Increase the separation between the equipment and receiver.
- Connect the equipment into an outlet on a circuit different from that to which the receiver is connected.
- Consult the dealer or an experienced radio/TV technician for help.





## **After Service(A/S)**

### **1. Warrant**

Warrant with free of charge for one year from purchasing date of Access Dream.

cf) It is not available to warrant damages caused by natural disaster or user's fault even though it is in a term of 1 year warrant.

### **2. Pay Service**

1. Damages by inserting alien substances (water, drink, coffee, sand, etc).
2. Defect or functional disorder by dropping of the device.
3. Case defect or variation caused by benzene, thinner etc.
4. Damages by using irregular device or part.
5. Damage by user's optional disassembling, causing losing of parts.
6. Damages caused by repairman who is not from SM Tech Co., Ltd
7. Damages by natural disaster (lightning, storm, flood)

## **SM Tech Co.,Ltd SERVICE CENTER**

ADDRESS : Sangwoo Bldg 8 Yuweol-Dong, Ojung-Gu Puchon City Kyungki-Do Korea

: ++82-32-681-2051

FAX : ++82-32-681-2053

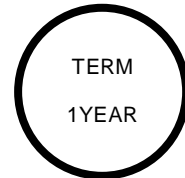
Web-Page : [www.smtechkr.com](http://www.smtechkr.com)





## WARRANT

### WARRANTY CERTIFICATE



PRODUCT : \_\_\_\_\_  
MODEL NAME : \_\_\_\_\_  
DATE OF PURCHASE : \_\_\_\_\_ (YEAR) \_\_\_\_\_ (MONTH) \_\_\_\_\_ (DATE)  
USER NAME : \_\_\_\_\_ TEL : \_\_\_\_\_  
ADDRESS : \_\_\_\_\_  
NAME OF SALES : \_\_\_\_\_ TEL : \_\_\_\_\_  
ADDRESS : \_\_\_\_\_



***SM TECH CO., LTD***

Present this certificate with purchasing date when you need A/S for sufficient Warranty service.

1. The quality of this product will be warranty according to this certificate.
2. The term of warrant applies from the purchasing date. Please keep the purchasing date.  
(Without purchasing date, the term of warrant is regarded for 1 year after 6 months from manufactured date, month, year.)
3. This certificate will not re-issued.

The external appearance and standard may be variable for quality improvement without customer notification.