

User Manual

JP-150S

Arthur Technology Co. Ltd.

■ Cautions

Read the following carefully with regard to care of your iBOX Player:

1. Avoid shocks or impacts.

The iBOX player can withstand light shocks from walking or exercise, but dropping it from a high altitude or inflicting a strong impact with a heavy object may damage the player.

2. Prevent water from getting inside the unit.

If water gets inside the unit, the internal parts may be damaged, causing player problems. Wipe water off the surface of the unit with a dry cloth promptly, and contact the service center.

3. When storing the player.

Keep the player in a place free of moisture, strong magnetism, or heat and remove the battery.

4. Don't change or modify any part or component of product. It doesn't be guaranteed the normal operation or the warranty.

This device complies with Part 15 of the FCC Rules. Operation is subject to the following two conditions : (1) this device may not cause harmful interference, and (2) this device must accept any interference received, including interference that may cause undesired operation.

■ Note

This equipment has been tested and found to comply with the limits for a Class B digital device, pursuant to Part 15 of the FCC Rules. These limits are designed to provide reasonable protection against harmful interference in a residential installation. This equipment generates, uses and can radiate radio frequency energy and, if not installed and used in accordance with the instructions, may cause harmful interference to radio communications. However there is no guarantee that interference will not occur in a particular installation. If this equipment does cause harmful interference to radio or television reception, which can be determined by turning the equipment off and on, the user is encouraged to try to correct the interference by one or more of the following measures ;

- Reorient or relocate the receiving antenna
- Increase the separation between the equipment and receiver
- Connect the equipment into an outlet on a circuit different from that to which the receiver is connected.
- Consult the dealer or an experienced radio/TV technician for help.

< CONTENTS >

- Basic
- IBox
- View of iBox Play Hardware
- Checking the Contents
- Installing iBOX Software
- Installing iBOX USB Drive
- Connecting iBOX to Your Computer
- Using iBOX Desk
- Turning On(Off) iBOX
- Listening to iBOX Music
- Selecting iBOX Music Files
- Playing from the Middle of an iBOX File
- Locking iBOX Keys
- Adjusting iBOX Volume

Advanced

- - Description of Mode Functions
- Recording iBOX Music in Real Time
- Recording iBOX Voice
- Exchanging Music with iBOX
- Downloading Music from Another MP3 Player
- Using iBOX Repeat Function
- Using iBOX EQ Mode
- - Deleting All iBOX Files
- Deleting iBOX Music/Voice Files One by One
- Adding an SMC (Smart Media Card)
- Adjusting the LCD Display Backlight
- Troubleshooting
- Specifications
- Warranty

Arthurtech Co. All rights reserved. Prior consent must be obtained for using the manual, photographs, software, and other related documents of this product. Any violation may cause legal action to ensue.

Content of the user manual is subject to change without notice.

■ Digital Encoding iBOX

1. Music Recording

An all purpose entertainer that can record your favorite music in real time using the CD sync function

2. Voice Recording

Learning aid for recording interviews, lectures, business talks, etc. using the added VAD function

3. Encoding MP3 Player

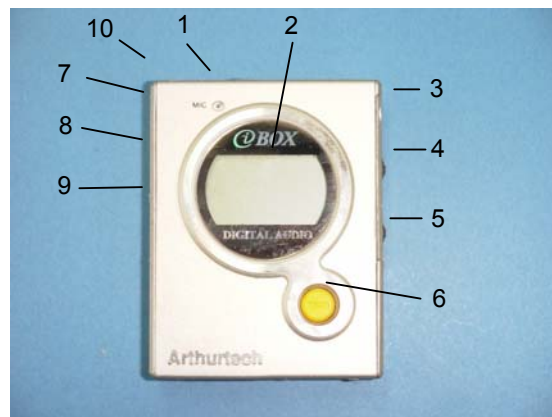
iBOX for selecting desired bits (BA-16~192) for music/voice and saving as MP3 files

Digital Audio Encoding device of the next generation that allows you to listen to analog music/voice from CD, MD, radio, Internet, and TV using the synchro and VAD functions in real time and to record the source by converting into MP3 files.

■ View of iBOX Play Hardware

Function Buttons

No.	Description
1	Microphone
2	LCD Display
3	Earphone
4	Menu/Volume
5	Power/Play/Pause/Next/Previous
6	Music, Voice Record/Stop
7	Audio Input
8	Data In/Out (USB)
9	Hold Switch
10	Carrying Strap



■ iBOX LCD Menu and Functions

LCD Display

No. Description

1 Battery Level

2 Repeat/All/Random

3 Volume Level

4 Voice Recording Icon

5 Radio Recording Icon

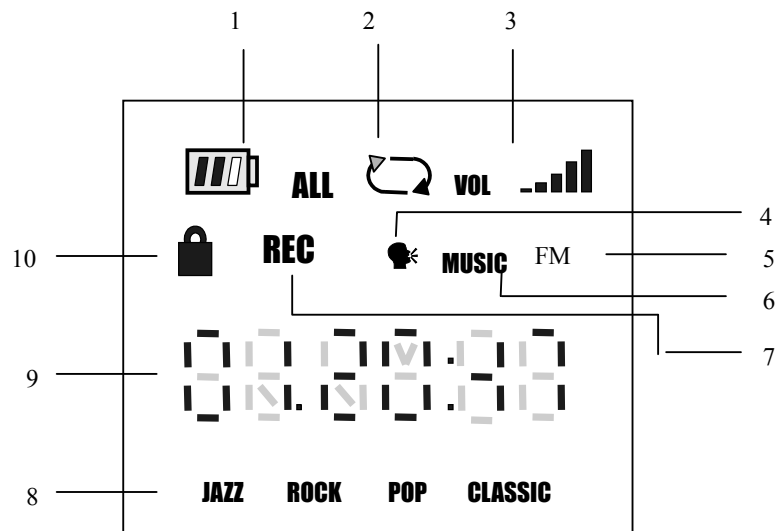
6 Music/Voice Playback Icon

7 Recording

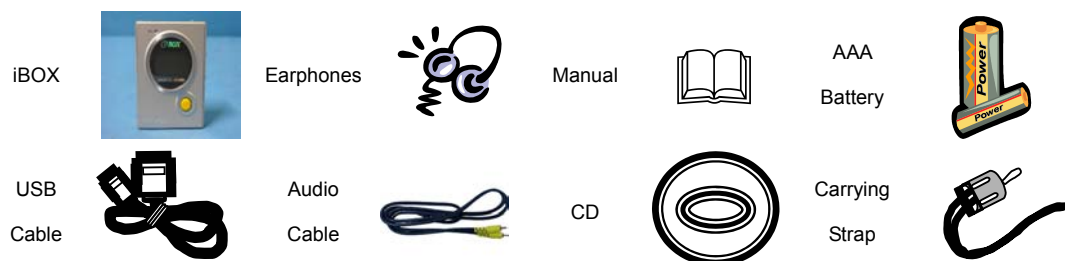
8 Equalizer

9 Time Indicator

10 Hold



■ Checking the iBOX Contents



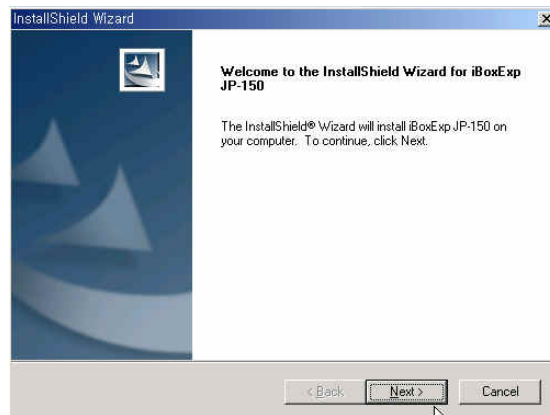
After purchasing the iBOX player, check if all of the above items are included in the iBOX package. Contact the vendor for any missing item.

■ Installing iBOX Software

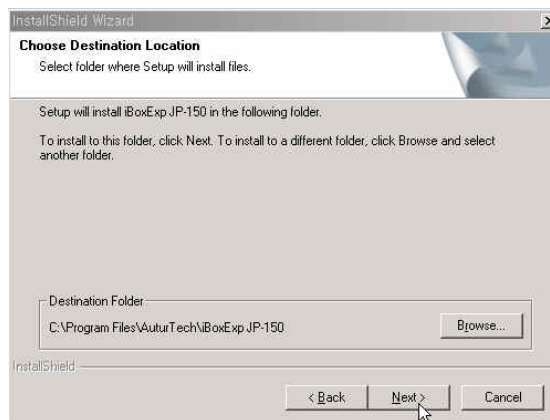
You must install the iBOX software to store iBOX files.

The software CD contains the programs for controlling file transfer between the iBOX and the PC and for converting CD music into iBOX files by playing the iBOX files back from the PC. The CD also includes the iBOX User Manual.

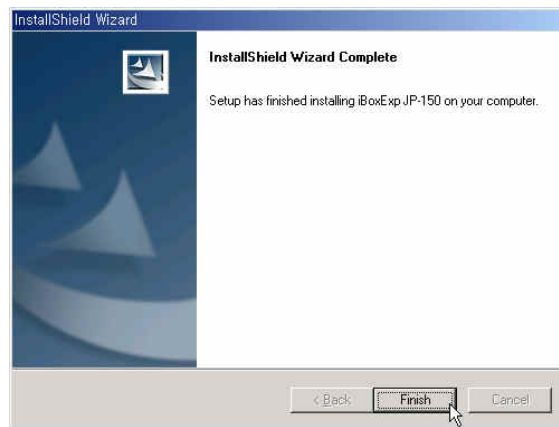
1. Connect iBOX to the PC using the USB cable, and install the software to move the digital files as follows:
2. Insert the CD in the CD-ROM drive of the PC. The installation program starts automatically. Click "Install" to start installation.
3. The setup file is executed automatically. Click "Next" at the instruction of the program.
(Note) If the setup file is not executed automatically, locate and run the setup.exe file from the directory.



4. Select the directory to install iBOX Explorer and click "Next."
"C:\Program Files\Arthur Tech\IBoxExp JP-150"
5. Select the Program Folder and click "Next."



6. On the following screen, click "Finish" to complete the installation



7. To run the program after the installation, click the Start – Program – iBOX icon.

■ Installing iBOX USB Drive

Run the iBOX program, turn on the power of the iBOX Player, and connect the USB cable to the USB port. The program need the drive files, you can find T33820 file on iBOX installation program.

■ Connecting iBOX to Your Computer

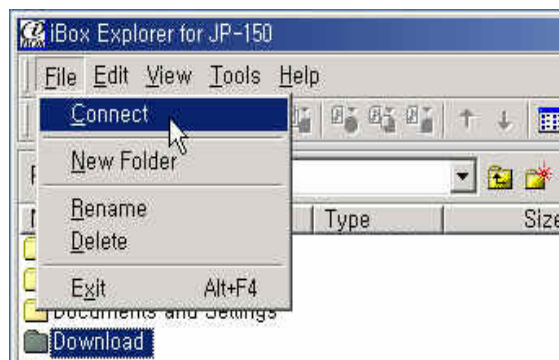
For downloading MP3 files from the PC, first connect the iBOX Player to the PC using the USB cable. Make sure that the iBOX program is running on the PC.

Connect the iBOX cable to the USB port of the PC.

Turn on the iBOX power, and connect the USB cable to the USB port of the iBOX.

The connection is completed if the file message appears on the LCD display.

To reconnect to the PC after being disconnected, connect the PC cable again or use the “Connect” menu from the iBOX program.



■ Using iBOX Desk

To Move or Save an iBOX Music File:

1. You can use the menu command, toolbar, or mouse.
2. Use the mouse to select the file to download.
To select more than one file at a time, press and hold the "Shift" key and click files to select.
3. To move or save files to the internal memory or the folder memory of the PC using the menu commands, select "Copy File" or "Move File" → "to internal flash" or "to Folder" from the Edit menu.
Note that, when a file is moved, the data file is completely deleted before being moved.
4. You can use the toolbar icons shown below.
The above icons are displayed in the order of Copy to folder, internal, external, Move to folder, internal, and external. Select the desired icon to move or save files.
Click the desired file and use the toolbar icons to move or save the file.

To Move or Save an iBOX Music File:

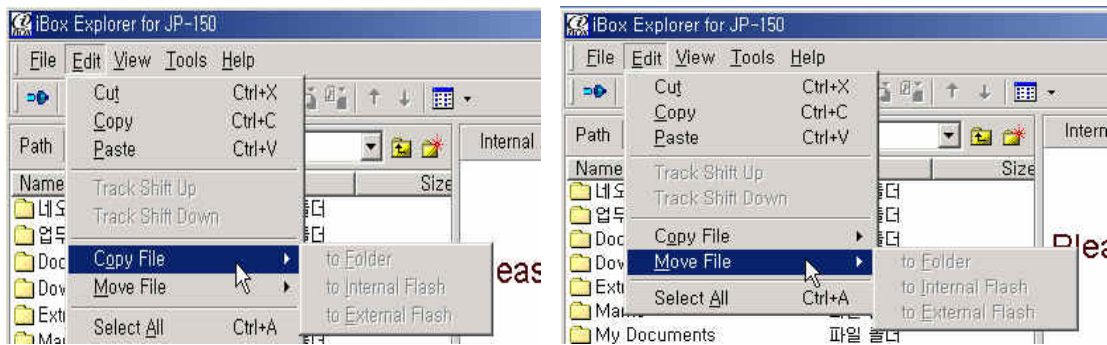
5. You can drag a file with the mouse to move or save it. Click the desired file from the files downloaded onto the PC and drag it to the internal memory or folder memory to move the file. The data file is first deleted before being moved.
The progress status is displayed.
To copy a file, press and hold "Ctrl+Shift" and drag it with the mouse.
The progress status is displayed.

To Move or Save an iBOX Music File from the PC:

1. Turn on the iBOX and connect the USB cable to display the start screen.
2. Select the iBOX file to be transferred from the PC and follow the procedures described on the previous pages.
3. The progress status is displayed.

To Move or Save a Music File from iBOX to PC:

1. Turn on the iBOX and connect the USB cable to display the start screen.
2. Select the iBOX file to be transferred from the PC and follow the procedures described on the previous pages.
3. The progress status is displayed.


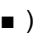


To Delete a File:

1. Select the file to delete, and press the “Delete” key on the keyboard or use the “Delete” command from the File menu.
2. Select the file to delete using the mouse, and press the “Delete” key or select “Delete” from the File menu.

Caution: Deleted files may not be restored.


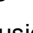
Turning On (Off) iBOX

1. Press the Play () button on the jog switch to turn on the power.
(The first music selection in the internal memory is automatically ready to be played.)
2. Press the Stop () button for three seconds to turn off the power.


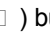
The iBOX is turned off automatically if left in the stop mode for over three minutes.

■ Listening to iBOX Music

To play an iBOX file, the file must be saved in the iBOX. (See how to save an iBOX file.)

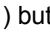
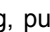
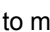

1. Press the Play button on the jog switch to turn on the power. Press the Play button again to play the current track.
2. To pause the music during play, press the Play () button on the jog switch. The current track will begin flashing.
3. To resume the music after the pause, press the Play () button again.

■ Selecting iBOX Music Files


1. Push up the Forward () button on the jog switch of the iBOX to select the next track, or pull down the Reverse () button to select the previous track.
2. The selected file is played automatically.

If no particular file is selected, the iBOX plays the files in memory in sequence.

■ Playing from the Middle of an iBOX File

1. Use the Forward () button and the Reverse () button to select the desired iBOX file.
2. While the file is playing, push up and hold the Forward () button or pull down and hold the Reverse () button to move to the desired position.
3. Release the button at the desired position to play the music from that position.

■ Locking iBOX Keys

1. Use the Hold button to lock all buttons.
2. Push up the Hold button to display the Hold icon on the LCD display.
3. When this icon () is displayed, all keys are locked.
4. To release hold, pull down the Hold button.

■ Adjusting iBOX Volume

Push up or pull down the Volume button on the jog switch to increase (+) or decrease (-) the volume.

Advanced

Description of Mode Functions

■ Menu

Press the Menu button and use the Up/Down button to select the desired menu.

■ Menu Buttons

Music Recording

1. Change Modes
2. Select Track Mode
3. Set Level
4. Select Recording

Voice Recording

1. Change Modes
2. Change VAD Level
3. Set Level
4. Select Recording

E.Q. Mode

1. Normal
2. Jazz
3. Rock
4. Pop
5. Classic

Repeat Mode

1. Play All Tracks
2. Repeat One Track
3. Repeat All
4. Random Order

■ Extended Memory

Delete

1. Delete One Track
2. Delete All Tracks
3. Format

Sync: Selects tracks automatically during real time recording

(1Sync: Only one song is selected and recorded.

Sync: All songs are selected and recorded to tracks automatically.)

VAD (Voice Activated Detection): Detects voice only for recording.

■ Recording iBOX Music in Real Time

You can save iBOX music while listening to iBOX music (CDP, MDP, audio, FM radio, Internet, TV, etc.) in real time using the sync function.

1. Before downloading music, connect the audio cable to the audio input jack of the iBOX and to the audio output jack of the CDP, MDP, audio, FM, etc.
2. Turn on the iBOX power and switch to music mode using the menu button.
3. Press the menu button to display (In Aud) on the LCD display. If (In Voc) is displayed, move the menu button up or down to display (In Aud).
4. After switching to music mode, select track mode. Press the menu button, and move the menu button up or down to select and display either (1Sync) or (Sync) on the LCD display.
5. After switching to track mode, select the recording. Press the menu button, move the menu button up or down to select the desired memory among (tr-16-br-192), and press the Stop button.
6. Adjust the volume level (LE 01-05) by pressing the menu button.
7. Select the sync function level. Press the menu button, and move the menu button up or down to select the desired level (SL, HI, MI, LO).
8. Press the REC button to start recording.
9. After the recording is complete, press the Stop (■) button to save the track as a music file.

■ Recording iBOX Voice

You can record iBOX voice in either MPEG or VAD (Voice Activated Detection) mode to obtain optimum sound quality for language learning or voice recording.

1. Turn on the iBOX power and switch to voice mode using the menu button.
2. Press the menu button to display (In VOC) on the LCD display. If (In Aud) is displayed, move the menu button up or down to display (In VOC).
3. After switching to voice mode, select track mode. Press the menu button, and move the menu button up or down to select and display the VAD recording mode on the LCD display.
4. After switching to recording track mode, select the recording. Press the menu button, and move the menu button up or down to select the desired memory among (tr-16-br-192).
5. After selecting the recording, adjust the microphone level. Press the menu button, and move the menu button up or down to select the desired level among (LE 01-05).
6. Press the VAD function level, and move the menu button up or down to select the desired level (SL, HI, MI, LO).
7. Press the REC button to start recording.
8. After the recording is complete, press the Stop (■) button to save the track as a voice file.

■ Exchanging Music with iBOX

1. To exchange music, connect the earphone output jack of one iBOX and the audio input jack of another iBOX with an audio cable.
2. Select the desired music from the iBOX A.
3. Set the iBOX B to recording mode. (For mode changes, refer to the Music Recording section.)
4. Press the Play button of the iBOX A and the REC button of the iBOX B simultaneously to record music from A to B.


■ Downloading Music from Another MP3 Player

1. Connect the earphone output jack of the other MP3 player and the audio input jack of the iBOX with an audio cable.
2. Select the desired music from the other MP3 player.
3. Set the iBOX to music recording mode. (Refer to Music Recording section.)
4. Press the Play button on the other MP3 player and the REC button of the iBOX simultaneously to record the music.

■ Using iBOX Repeat Function

This function is used in the Play mode of the iBOX.

Press the menu button at an interval of two seconds to select the desired repeat mode.

1. To listen to all tracks only one time, select Play All Tracks (**ALL**).
2. To listen to all tracks repeatedly, select Repeat All ().
3. To listen to the current track repeatedly, select Repeat One .
4. To listen to all tracks in random order, select Random Order (RAND).



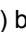
■ Using iBOX EQ Mode

Press the menu button to select the desired EQ mode.

While listening to music, press the menu button at an interval of one second to display in the order of Normal (no display) → JAZZ → ROCK → POP → CLASSIC.

■ Deleting All iBOX Files

Use the Format function to delete all files and to clear all flash memory errors.

1. Press the menu button to display (Fr- Int) on the LCD display.
2. Press the Play () button to display (Y.n) on the LCD display.
3. To delete all files, press the Play () (yes) button.
4. To cancel, press the Stop () (no) button to return to the initial screen.

Remember that deleted files cannot be restored.

■ Deleting iBOX Music/Voice Files One by One

1. You can delete music or voice files by pressing the menu button. Press the menu button to select the Delete mode. When (Er 1-01) is displayed, move the menu button up or down to select the track to delete.
2. After selecting the desired file, press the Play button to display (Y.n).
3. Press the Play button to delete the file, or press the Stop button to cancel.

Remember that deleted files cannot be restored.

■ Adding an SMC (Smart Media Card)

If you need more memory, purchase a separate SMC and use it with the iBOX.

Be sure to turn off the power before inserting or removing the SMC.

1. Insert the SMC into the memory card slot all the way as shown in the figure.
2. Turn on the power. The memory of the card is displayed on the LCD.
3. To remove the card, push the Eject button in the arrow direction. Then, take the card out by hand.

The method of sending files to the SMC is the same as sending to internal memory.

■ Adjusting the LCD Display Backlight

1. Press the menu button to display (bL-on). If (bL-off) is displayed, move the menu button up or down to display (bL-on).

EL Backlight function consumes a lot of battery power. Use it only when necessary.

■ Troubleshooting

If it appears that the iBOX Player has a problem, check the following before contacting customer service:

The player does not work, or nothing is displayed on the LCD.

- Check the general battery or the rechargeable battery level. The player requires one 1.5V AAA battery. Also check the polarity (+, -) of the battery installed.

The iBOX buttons do not work.

- Check if the Hold button is pressed.

Music is not played when pressing the Play button in MP3 mode.

- Check if any iBOX file is saved in internal memory.
- Check if the battery is correctly installed.
- Check if the power is on.

MP3 files cannot be downloaded.

- Check if the iBOX is properly powered on and if the USB cable is correctly connected to the USB port of the PC.
- Check if the battery is correctly installed.
- Check the USB port connection.

The SMC cannot be inserted.

- The Smart Media Card is produced in two types: 3.5V and 5V. You cannot use 5V in the iBOX.

Files cannot be played back from the SMC.

- You cannot use a smart card that saved files in other MP3 players.
- Format the smart media card using the iBOX program and save the files again.

■ Customer Service

Product Information Service

If you have any problem in relation to the use of your iBOX player, contact us via telephone, fax, or e-mail as follows:

Tel: 82-2-2217-0160 / Fax: 82-2-2217-0162

For more information about the iBOX software or player, visit us at the following site:

<http://www.arthurtech.com>.

■ Specifications

Processor	16-bit CPU
Memory Capacity	Internal 64MB / 128MB
Extended Memory	SMC (32MB / 64MB / 128MB)
Voltage	3V
Battery	One AAA Battery (1.5V)
LCD	LCD Numerals / EL Back Lighting
Size (WxHxD) / Weight	53 x 68 x 16 mm / 35 g (excluding the battery)
Case	Aluminum / ABS
File Transfer Rate	4 Mbps
Voice Recording	MPEG I, II Layer-3, VAD Mode
Noise	90 dB
Earphone Output	5 mW
Output Frequency Range	20 Hz ~ 20 kHz

■ Accessories

Earphones	Earphones for MP3 Player
Clip	Carrying Strap
PC Connection Cable	USB Cable
Audio Cable	Audio Stereo Cable
User Manual	Korean
Installation CD	File Management S/W / iBOX File Creation and Playback / User Manual
AAA Size Battery	One

■ Warranty

Free Service

If the product is found to be defective within one year after purchase (product warranty period), repair shall be provided at no charge.

Type of Customer Complaints

Defect in performance or functions that requires major repair, occurring during normal use within ten days from purchase

Defect of main parts found within one month from purchase

Repairable	When a defect is found
	When a failure occurs due to the same defect up to four times
Not Repairable	When repair cannot be done as the replacement part is not available

- Type of Customer Complaints

Defect in performance or functions caused intentionally by the user or user negligence

Repairable

Not Repairable

- Failure due to Acts of God (fire, saline damage, gas earthquake, storm, flood, etc.)
- Failure due to abnormal power supply or accessory defects
- Replacement of consumable parts due to normal wear and tear
- Failure due to external causes other than an inherent product defect
- Failure caused by repair or remodeling done by someone other than the service technicians of Arthurtech Co.

Matters not specified above shall be handled in accordance with the Customer Protection Regulations.

Customer Service Center: +82- 2217-0180 Fax: +82- 2217-0182

Product Name: _____

Warranty Period

Model Name: _____

1 Year

Date of Purchase: ____ / ____ / ____.

Customer Name: _____ Tel: _____

Address: _____

Arthurtech Co. Ltd.

Please retain this warranty in a safe place. You will need to present the warranty with the date of purchase on it in order to ensure proper service.

1. The warranty for this product shall be limited within the scope described above.
2. The free warranty period is calculated from the date of purchase. Be sure to have your vendor enter the date of purchase on the warranty. (If the date of purchase cannot be proved, the warranty period shall be calculated from a date six months after the date of manufacturing.)
3. This warranty shall not be re-issued.

The appearance and the dimension of this product may be changed without notice to consumers in order to improve product quality.

Arthurtech Co. Ltd.

For questions, contact Arthurtech Customer Service

Tel: 82-2-2217-0180 Fax: 82-2-2217-0182

Address

4th Floor, KCS Building, 228-13, Yongdap-dong, Seongdong-gu, Seoul

Homepage

<http://www.arthurtech.com>