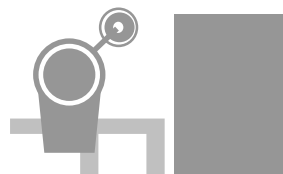


SHF 400

Your Phones's best friend

HANDS FREE

CAR KIT



Content

| | |
|---------------------------------------|-------|
| Specificaton & Feature | ----- |
| Product Composition | ----- |
| How to install | ----- |
| Some notices on fitting | ----- |
| How to use | ----- |
| Check - up when found something wrong | ----- |
| Product Warranty | |

"Handsfree Car Kit", brand-new product of Samsin Innotec Co., Ltd

Allows drivers safe driving while freely talking over phone. It's preferable to make

A receiving call during driving for safe running. Making a phone call may get you

To miss vision in front.

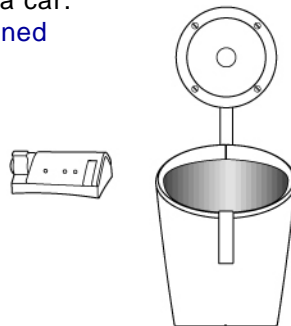
CAUTION: Changes or modifications not expressly approved by the manufacturer responsible for compliance could void the user's authority to operate the equipment

This device complies with part 15 of the FCC Rules. Operation is subject to the following two conditions: (1) This device may not cause harmful interference, and (2) this device must accept any interference received, including interference that may cause undesired operation.

Specifacaton & Feature

■ Product Feature

- Much safer and more convenient with wireless remote control (conversation button, volume control, conversion of handsfree and ear phone)
- Mutual communication between receiver and transmitter at the same time with Duplex system
- Freely adjustable to the height and direction of the speaker with separate boom speaker.
- Elimination of howling and echo with advanced DSP i/c
- Fashionable in cup holder - shaped.
- Privacy conversation from others in a car.
- Free of damage on a car with positioned in a cup holder.
- Suitable for all kinds of cars.
- Free of electromagnetic wave
- Charging the handset in a car.



■ Product Specification

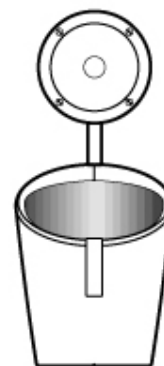
- Product name : Handsfree Car Kit
- Microphone Sensitivity : -44dB ± 2dB
- Microphone Type : Separated microphone (sun visor - mount)
- Rating Output : 2 W, 8
- Rating Voltage : DC 12V ~ 24V(Power supply in a car)
- Charging Voltage : DC 4.1V



Notice!!

Some handsets like MP3 Phone may not be available with this Cup Phone and don't work on any function.

Product Composition



Handsfree body



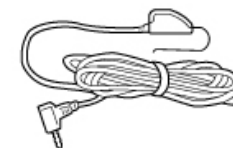
Remote Control



Operation Manual



Power Supply Cord for car
(used with Cigarette jack)



Separated Microphone
(Sun visor-mount)



Protective Cup Holder
of the product



A mercury cell for remote control
(LR44 1.5V ×2)

■ Separate items for sale



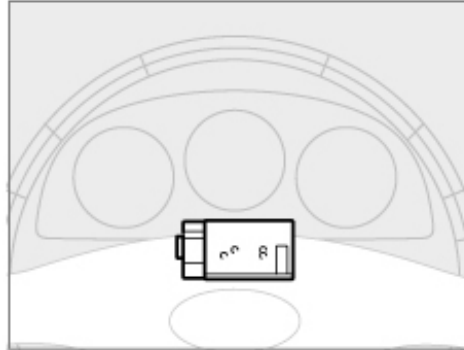
Ear Microphone



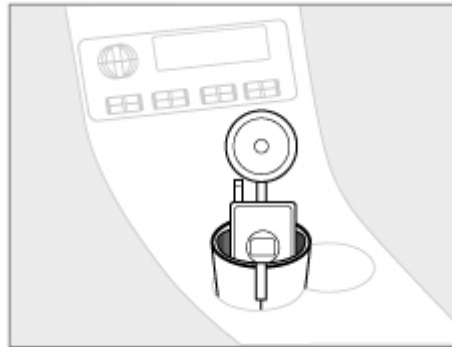
Charger cord of handset
(The cord suitable for your handset is
to be purchased from Handsets shops)

How to install

- Fit microphone onto sun visor - mount and plug into microphone jack of handsfree back.
- Take off the protective vinyl in the bottom of remote control and attach it as shown in side picture (It makes adhesive much better to wash out a steering wheel.)



- Adjust the speaker to face the driver.
- Connect a cigarette plug to power supply jack of handsfree and cigarette jack in a car.
- The connection plug for handset from handsfree into the handset.



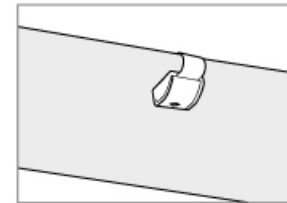
Notice !!! Front in speaker is to be uncovered.

Some notices on fitting

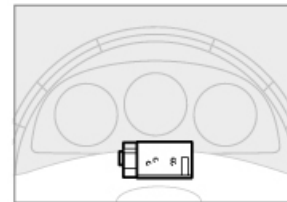
- Fit "the protective cup holder of product" into the cup holder of car, and then put the handsfree body on that.
- The position which may obstruct vision or cause some trouble during driving should be avoided.
- The power supply is from a cigarette jack, so need to be mounted as close as it is to a cigarette jack.
- It's good that microphone is to be positioned onto sun visor - mount.

It's avoided around fan.; if exposed right to cold air, it causes handsfree and handset some trouble because some dew gets produced inside

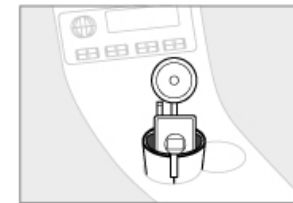
■ Pictures mounted in a car handsfree and handset.



(Microphone)



(Remote Control)



(The Body)

Operation Instruction

The call with handsfree

- Ear plug of handsfree into ear jack of handset to the full.
- Put a handset into handsfree.
- Fix "Handsfree/Ear Mic" switch to "Handsfree" mode.
When released from the factory, it is to be fixed at Handsfree mode.
- When there is an incoming call,
 - With Receiver/End/Redial switch pressed the call is connected.
 - Open the flip of the handset
 - Press any button on the handset.
- To make outgoing call, press a desirable number on the handset, and then press either the "send" button on the handset or "Receiver/ Transmitter/ Redial" switch on the remote control to talk through microphone and speaker of handsfree.
- If the call is complete, press either "Receiver/End/Redial" switch on remote control or "End" button on the handset.
- In case of pressing "Receiver/End" switch on remote control, the last call number is redialed. (Some models don't work on the function)
- If there is something howling amidst telephone communication, the volume is to be adjustable.

How to adjust the volume

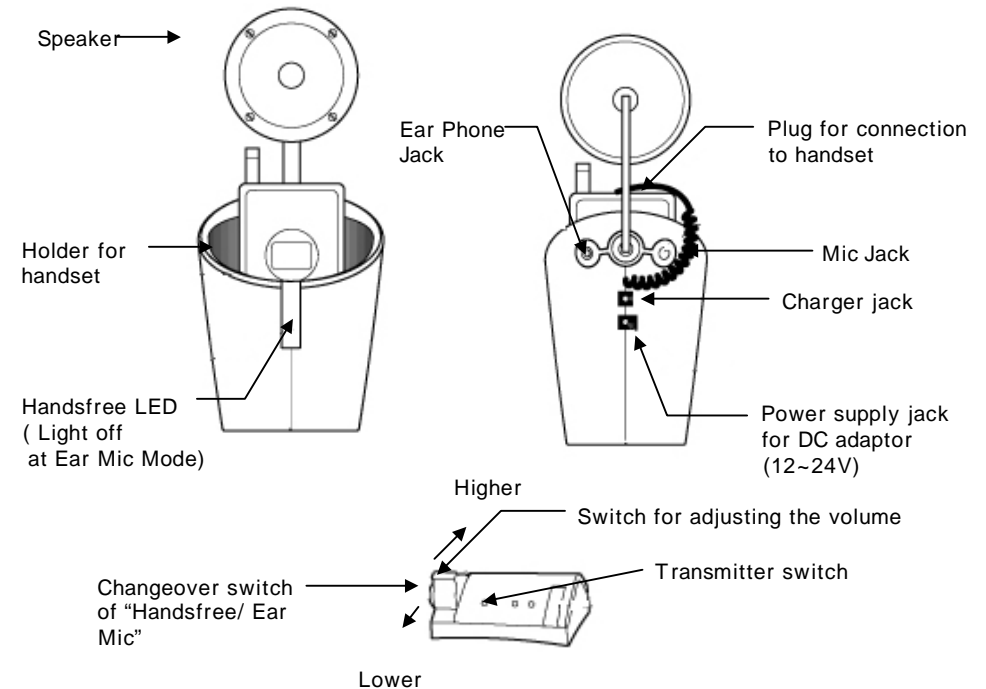
- It's good to adjust during communication.
 - If push back the handle of a remote control, the volume gets higher step by step. (It's adjusted to the number of pushing back.)
 - If pull forward the handle of a remote control, the volume gets lowered step by step. (It is adjusted to the number of pulling forward.)



Notice!! Volume is adjustable to the 12 steps.

Operation Instruction

Part Name

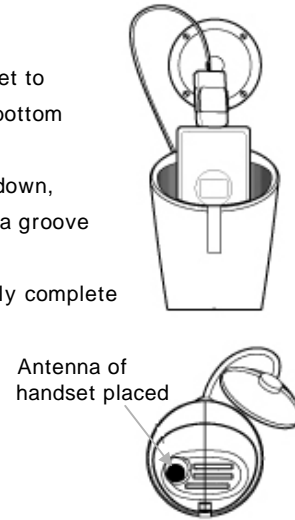


The call with Ear Microphone

- It is for privacy call from others in a car.
- Plug ear microphone(headset) in ear microphone jack, and one press "Handsfree/ Ear Mic" switch. It's switched to Ear Mic mode with handsfree LED light off.

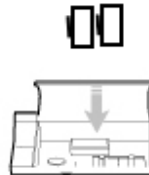
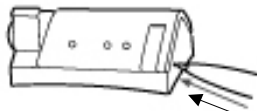
■ Handset Charging

- Connect a charger cord for your handset to the charger jack of handsfree and the bottom of handset.
- Put a handset in the handsfree upside down, the antenna of handset is fixed inward a groove of handsfree.
- The charging of handset is automatically complete (There is no extra signal on this)



■ How to change a battery for remote control.

- Standard size only is acceptable : LR44 1.5V×2
- The battery life : six months (based on testing at Samsin side)



Press a little groove at right side with something like pen toward an arrow, and then open the cover to change the battery.
If the LED flicks by pressing any switch on the remote control after change of battery, it works normally.



Notice

- Charger cord
- - Charger cord suitable for handset is acceptable. (It can be checked with handsfree shop)
- A charger cord is to be connected to a charger jack of handsfree, and then to handset.
- Any other cigarette cords except for a cigarette cord enclosed is prohibited.

| Phenomenon | Followings need to be checked. |
|--|---|
| It doesn't work | <ul style="list-style-type: none"> •Pls check out •1. If cigarette cord is connected to the full. \ •2. If ear plug of handsfree into earphone jack of handset • to the full. •3. Battery for remote control |
| The Cup Phone doesn't work on communication | <ul style="list-style-type: none"> • Pls check out if "Handsfree/Ear Mic" switch is positioned • to Handsfree mode (LED of handsfree lights off) |
| The ear microphone doesn't work on communication | <ul style="list-style-type: none"> •Pls check out if "Handsfree/Ear Mic" switch is positioned to Ear Mic (LED of handsfree lights off) |
| There are some noises during the call | <ul style="list-style-type: none"> •Pls check out receiving sensitivity displayed in handset. •(there may be some noise produced when receiving sensitivity at otherside is low) • |
| There are some howling(echo) during the call. | <ul style="list-style-type: none"> • There may be some howling produced according to handset model. At the time, pls control the volume. |

Pls feel free to contact us, Customer Service Division,
if you have any question. The phone: 82 - 31 - 905 - 6304

Product Warranty

- This unit is passed through complete quality control and the test at Samsin Innotec. Co., Ltd.
- We, Samsin Innotec Co., Ltd warrant the quality of this unit as follows.

| | | | |
|----------------|-------------------|------------|-----------|
| Product Name | Handsfree Car Kit | Model Name | SHF - 400 |
| Date purchased | | Serial NO | |
| Shop purchased | | Price | |

- After-sale service for one year

Our agents and office commit after - sale service for breakdown of this product within one year(warranty terms) in the state of being properly used.

- ● Charge for service

1. Breakdown due to user's handling with careless and misuse of the product.
2. Breakdown due to an act of God like a fire, an earthquake and a flooding.
3. Breakdown due to a temporary modification and rebuilding.
4. Consumable parts are used up.

This warranty is not to be reissued, pls keep it in safe.