



Appendix A. System Check Plots

Table of contents
SystemPerformanceCheck-D835-ES-Head
SystemPerformanceCheck-D835-ES-Body
SystemPerformanceCheck-D1900-ES-Head
SystemPerformanceCheck-D1900-ES-Body
SystemPerformanceCheck-D2450-EX-Head
SystemPerformanceCheck-D2450-ES-Body

Test Laboratory: HUAWEI SAR/HAC Lab

SystemPerformanceCheck-D835-ES-Head

DUT: Dipole 835 MHz D835V2; Type: D835V2; Serial: D835V2 - SN:4d059

Communication System: UID 0, CW; Frequency: 835 MHz; Duty Cycle: 1:1

Medium parameters used: $f = 835$ MHz; $\sigma = 0.916$ S/m; $\epsilon_r = 41.81$; $\rho = 1000$ kg/m³

Phantom section: Flat Section

DASY Configuration:

- Probe: ES3DV3 - SN3168; ConvF(6.32, 6.32, 6.32); Calibrated: 2015-9-28;
- Sensor-Surface: 3mm (Mechanical Surface Detection), $z = 2.0, 32.0$
- Electronics: DAE4 Sn851; Calibrated: 2015-7-20
- Phantom: SAM1; Type: SAM; Serial: TP-1475
- DASY52 52.8.8(1222); SEMCAD X 14.6.10(7331)

Configuration/d=15mm, Pin=250mW/Area Scan (6x13x1): Measurement grid: $dx=15$ mm, $dy=15$ mm

Maximum value of SAR (measured) = 2.55 W/kg

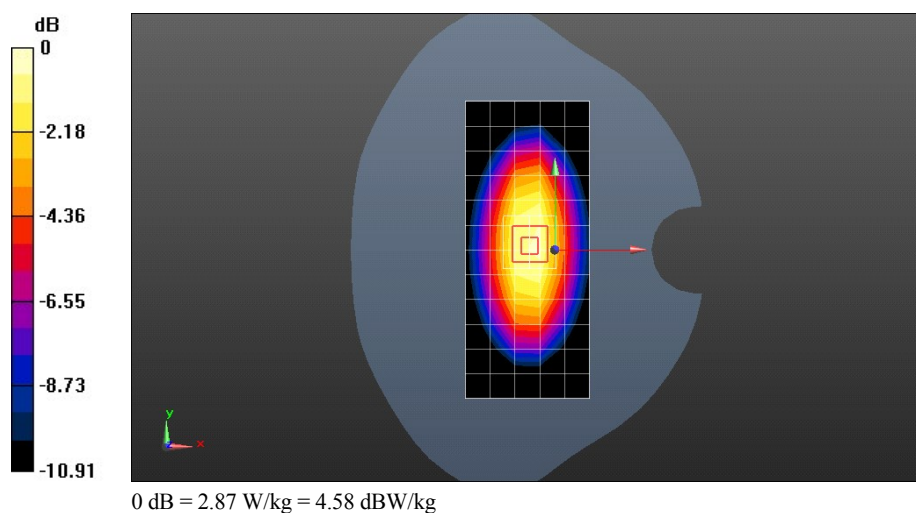
Configuration/d=15mm, Pin=250mW/Zoom Scan (5x5x7)/Cube 0: Measurement grid: $dx=8$ mm, $dy=8$ mm, $dz=5$ mm

Reference Value = 53.97 V/m; Power Drift = -0.05 dB

Peak SAR (extrapolated) = 3.67 W/kg

SAR(1 g) = 2.44 W/kg; SAR(10 g) = 1.58 W/kg

Maximum value of SAR (measured) = 2.87 W/kg



Test Laboratory: HUAWEI SAR/HAC Lab

SystemPerformanceCheck-D835-ES-Body

DUT: Dipole 835 MHz D835V2; Type: D835V2; Serial: D835V2 - SN:4d059

Communication System: UID 0, CW; Frequency: 835 MHz; Duty Cycle: 1:1

Medium parameters used: $f = 835$ MHz; $\sigma = 0.988$ S/m; $\epsilon_r = 53.998$; $\rho = 1000$ kg/m³

Phantom section: Flat Section

DASY Configuration:

- Probe: ES3DV3 - SN3168; ConvF(6.24, 6.24, 6.24); Calibrated: 2015-9-28;
- Sensor-Surface: 3mm (Mechanical Surface Detection), $z = 2.0, 32.0$
- Electronics: DAE4 Sn851; Calibrated: 2015-7-20
- Phantom: SAM2; Type: SAM; Serial: TP:1474
- DASY52 52.8.8(1222); SEMCAD X 14.6.10(7331)

Configuration/d=15mm, Pin=250mW/Area Scan (6x13x1): Measurement grid: $dx=15$ mm, $dy=15$ mm

Maximum value of SAR (measured) = 2.54 W/kg

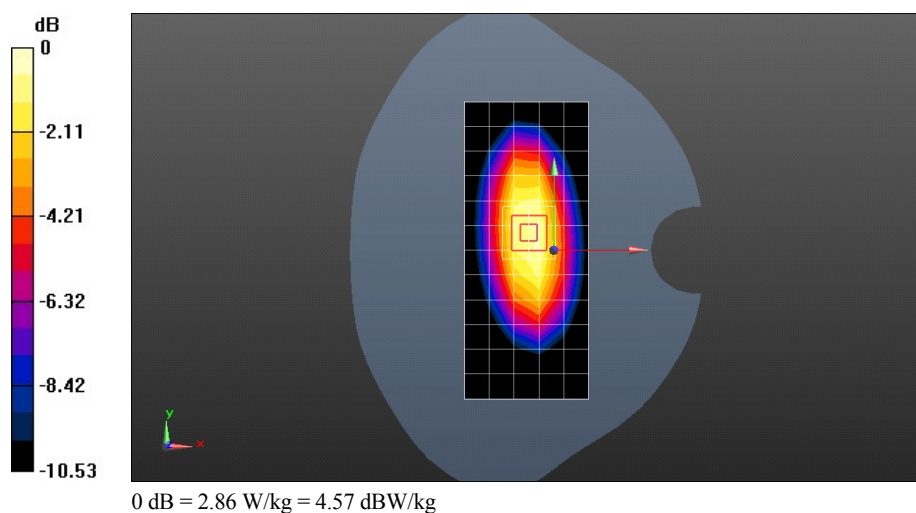
Configuration/d=15mm, Pin=250mW/Zoom Scan (5x5x7)/Cube 0: Measurement grid: $dx=8$ mm, $dy=8$ mm, $dz=5$ mm

Reference Value = 50.92 V/m; Power Drift = -0.05 dB

Peak SAR (extrapolated) = 3.56 W/kg

SAR(1 g) = 2.45 W/kg; SAR(10 g) = 1.6 W/kg

Maximum value of SAR (measured) = 2.86 W/kg



Test Laboratory: HUAWEI SAR/HAC Lab

SystemPerformanceCheck-D1900-ES-Head

DUT: Dipole 1900 MHz D1900V2; Type: D1900V2; Serial: D1900V2 - SN:5d091

Communication System: UID 0, CW (0); Frequency: 1900 MHz; Duty Cycle: 1:1

Medium parameters used: $f = 1900$ MHz; $\sigma = 1.427$ S/m; $\epsilon_r = 39.753$; $\rho = 1000$ kg/m³

Phantom section: Flat Section

DASY Configuration:

- Probe: ES3DV3 - SN3168; ConvF(5.13, 5.13, 5.13); Calibrated: 2015-9-28;
- Sensor-Surface: 3mm (Mechanical Surface Detection), $z = 2.0, 32.0$
- Electronics: DAE4 Sn851; Calibrated: 2015-7-20
- Phantom: SAM2; Type: SAM; Serial: TP:1474
- DASY52 52.8.8(1222); SEMCAD X 14.6.10(7331)

Configuration/d=10mm pin=250mW/Area Scan (6x10x1): Measurement grid: $dx=15$ mm, $dy=15$ mm

Maximum value of SAR (measured) = 9.49 W/kg

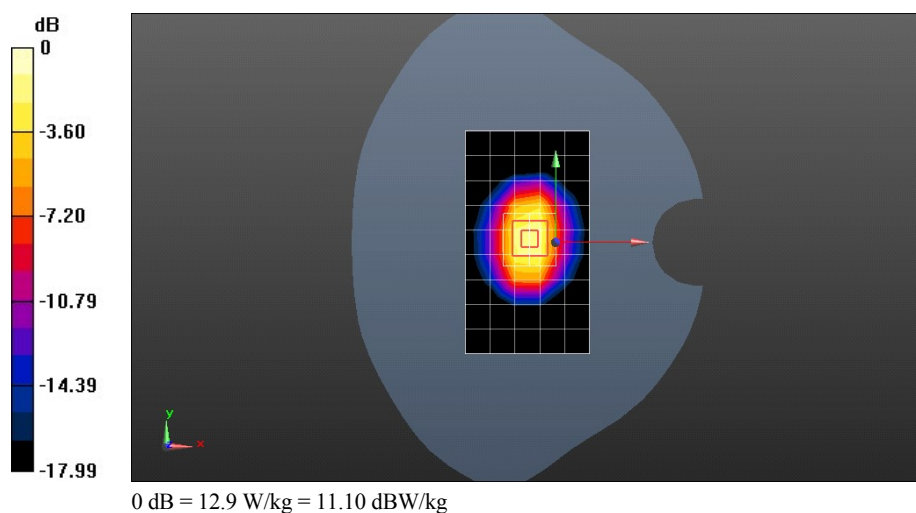
Configuration/d=10mm pin=250mW/Zoom Scan (5x5x7)/Cube 0: Measurement grid: $dx=8$ mm, $dy=8$ mm, $dz=5$ mm

Reference Value = 89.80 V/m; Power Drift = -0.13 dB

Peak SAR (extrapolated) = 18.5 W/kg

SAR(1 g) = 10.1 W/kg; SAR(10 g) = 5.26 W/kg

Maximum value of SAR (measured) = 12.9 W/kg



Test Laboratory: HUAWEI SAR/HAC Lab

SystemPerformanceCheck-D1900-ES-Body

DUT: Dipole 1900 MHz D1900V2; Type: D1900V2; Serial: D1900V2 - SN:5d091

Communication System: UID 0, CW (0); Frequency: 1900 MHz; Duty Cycle: 1:1

Medium parameters used: $f = 1900$ MHz; $\sigma = 1.552$ S/m; $\epsilon_r = 51.499$; $\rho = 1000$ kg/m³

Phantom section: Flat Section

DASY Configuration:

- Probe: ES3DV3 - SN3168; ConvF(4.74, 4.74, 4.74); Calibrated: 2015-9-28;
- Sensor-Surface: 3mm (Mechanical Surface Detection), $z = 2.0, 32.0$
- Electronics: DAE4 Sn851; Calibrated: 2015-7-20
- Phantom: SAM1; Type: SAM; Serial: TP-1475
- DASY52 52.8.8(1222); SEMCAD X 14.6.10(7331)

Configuration/d=10mm pin=250mW/Area Scan (6x10x1): Measurement grid: $dx=15$ mm, $dy=15$ mm

Maximum value of SAR (measured) = 11.4 W/kg

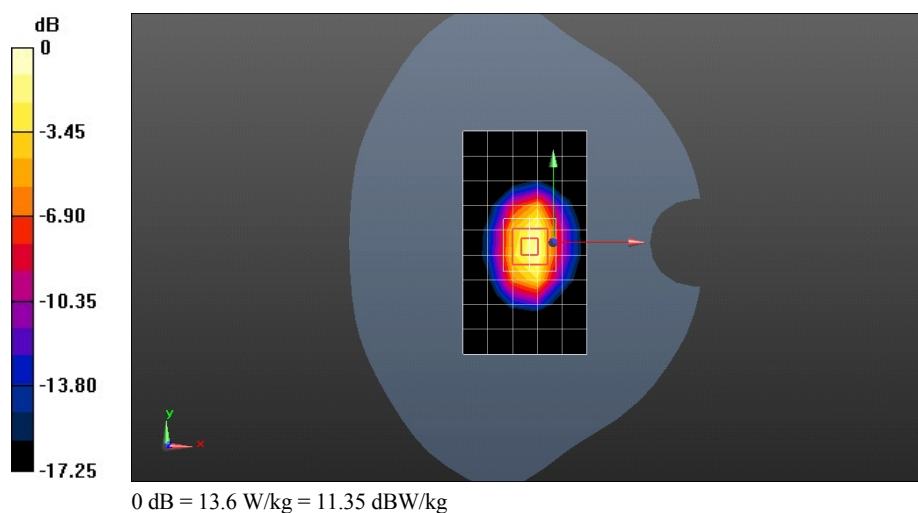
Configuration/d=10mm pin=250mW/Zoom Scan (5x5x7)/Cube 0: Measurement grid: $dx=8$ mm, $dy=8$ mm, $dz=5$ mm

Reference Value = 86.22 V/m; Power Drift = -0.14 dB

Peak SAR (extrapolated) = 19.0 W/kg

SAR(1 g) = 10.8 W/kg; SAR(10 g) = 5.65 W/kg

Maximum value of SAR (measured) = 13.6 W/kg



Test Laboratory: HUAWEI SAR/HAC Lab

SystemPerformanceCheck-D2450-EX-Head

DUT: Dipole 2450 MHz D2450V2; Type: D2450V2; Serial: D2450V2 - SN:860

Communication System: UID 0, CW; Frequency: 2450 MHz; Duty Cycle: 1:1

Medium parameters used: $f = 2450$ MHz; $\sigma = 1.866$ S/m; $\epsilon_r = 39.473$; $\rho = 1000$ kg/m³

Phantom section: Flat Section

DASY Configuration:

- Probe: EX3DV4 - SN3736; ConvF(6.7, 6.7, 6.7); Calibrated: 2015-4-30;
- Sensor-Surface: 3mm (Mechanical Surface Detection), $z = 1.0, 31.0$
- Electronics: DAE4 Sn851; Calibrated: 2015-7-20
- Phantom: SAM2; Type: SAM; Serial: TP:1474
- DASY52 52.8.8(1222); SEMCAD X 14.6.10(7331)

Configuration/d=10mm, Pin=250mW/Area Scan (6x11x1): Measurement grid: $dx=12$ mm, $dy=12$ mm

Maximum value of SAR (measured) = 16.5 W/kg

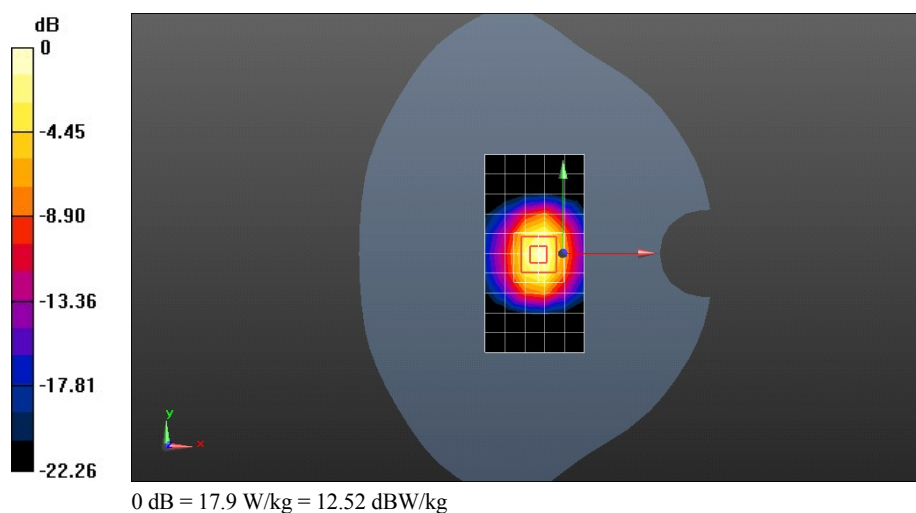
Configuration/d=10mm, Pin=250mW/Zoom Scan (7x7x7)/Cube 0: Measurement grid: $dx=5$ mm, $dy=5$ mm, $dz=5$ mm

Reference Value = 88.80 V/m; Power Drift = -0.09 dB

Peak SAR (extrapolated) = 28.1 W/kg

SAR(1 g) = 13.5 W/kg; SAR(10 g) = 6.27 W/kg

Maximum value of SAR (measured) = 17.9 W/kg



Test Laboratory: HUAWEI SAR/HAC Lab

SystemPerformanceCheck-D2450-ES-Body

DUT: Dipole 2450 MHz D2450V2; Type: D2450V2; Serial: D2450V2 - SN:860

Communication System: UID 0, CW; Frequency: 2450 MHz; Duty Cycle: 1:1

Medium parameters used: $f = 2450$ MHz; $\sigma = 1.966$ S/m; $\epsilon_r = 50.85$; $\rho = 1000$ kg/m³

Phantom section: Flat Section

DASY Configuration:

- Probe: ES3DV3 - SN3168; ConvF(4.35, 4.35, 4.35); Calibrated: 2015-9-28;
- Sensor-Surface: 3mm (Mechanical Surface Detection), $z = 2.0, 32.0$
- Electronics: DAE4 Sn851; Calibrated: 2015-7-20
- Phantom: SAM1; Type: SAM; Serial: TP-1475
- DASY52 52.8.8(1222); SEMCAD X 14.6.10(7331)

Configuration/d=10mm, Pin=250mW/Area Scan (6x11x1): Measurement grid: $dx=12$ mm, $dy=12$ mm

Maximum value of SAR (measured) = 14.1 W/kg

Configuration/d=10mm, Pin=250mW/Zoom Scan (7x7x7)/Cube 0: Measurement grid: $dx=5$ mm, $dy=5$ mm, $dz=5$ mm

Reference Value = 90.71 V/m; Power Drift = -0.12 dB

Peak SAR (extrapolated) = 29.4 W/kg

SAR(1 g) = 14 W/kg; SAR(10 g) = 6.42 W/kg

Maximum value of SAR (measured) = 18.6 W/kg

