



Report No.: RZA1102-0186HAC02R1



ANSI C63.19

TEST REPORT

Product Name	CDMA 1X Digital Mobile Telephone
Model	HUAWEI M580
FCC ID	QISC5870
Client	Huawei Technologies Co., Ltd.

TA Technology (Shanghai) Co., Ltd.



GENERAL SUMMARY

Product Name	CDMA 1X Digital Mobile Telephone	Model	HUAWEI M580
FCC ID	QISC5870	Report No.	RZA1102-0186HAC02R1
Client	Huawei Technologies Co., Ltd.		
Manufacturer	Huawei Technologies Co., Ltd.		
Reference Standard(s)	ANSI C63.19-2007: American National Standard Methods of Measurement of Compatibility between Wireless Communications Devices and Hearing Aids.		
Conclusion	<p>This portable wireless equipment has been measured in all cases requested by the relevant standards.</p> <p>General Judgment: T3</p> <div style="text-align: right;">  <p>(Stamp) Date of issue: March 10th, 2011</p> </div>		
Comment	The test result only responds to the measured sample.		

Approved by 杨伟中
Yang Weizhong

Revised by 凌敏宝
Ling Minbao

Performed by 沈辰
Shen Chen

TABLE OF CONTENT

1. General Information	4
1.1. Notes of the Test Report.....	4
1.2. Testing Laboratory	4
1.3. Applicant Information	5
1.4. Manufacturer Information.....	5
1.5. Information of EUT.....	6
1.6. The Ambient Conditions during Test.....	7
1.7. T-Coil signal quality categories of each tested Mode.....	7
1.8. Test Date	7
2. Test Information	8
2.1. Operational Conditions during Test	8
2.1.1. General Description of Test Procedures	8
2.1.2. CDMA Test Configuration.....	8
2.2. T-Coil Measurements System Configuration	9
2.2.1. T-coil Measurement Set-up.....	9
2.2.2. AM1D Probe	11
2.2.3. Audio Magnetic Measurement Instrument (AMMI).....	12
2.2.4. Helmholtz Calibration Coil (AMCC).....	13
2.2.5. Test Arch Phantom & Phone Positioner	13
2.3. T-Coil measurement points and reference plane	15
2.4. T-Coil Test Procedures.....	16
3. T-Coil Performance Requirements	17
3.1.1. T-Coil coupling field intensity	17
3.1.2. Frequency response	17
3.1.3. Signal quality	18
4. Summary Test Results	19
4.1. CDMA Cellular (slip close)	19
4.2. CDMA Cellular (slip open).....	20
4.3. CDMA PCS (slip close).....	21
4.4. CDMA PCS (slip open)	22
4.5. CDMA AWS (slip close).....	23
4.6. CDMA AWS (slip open).....	24
5. Measurement Uncertainty	25
6. Main Test Instruments	27
ANNEX A: Test Layout	28
ANNEX B: Graph Results.....	29
ANNEX C: Probe Calibration Certificate	79
ANNEX D: DAE4 Calibration Certificate.....	82
ANNEX E: The EUT Appearances and Test Configuration.....	87

1. General Information

1.1. Notes of the Test Report

TA Technology (Shanghai) Co., Ltd. guarantees the reliability of the data presented in this test report, which is the results of measurements and tests performed for the items under test on the date and under the conditions stated in this test report and is based on the knowledge and technical facilities available at TA Technology (Shanghai) Co., Ltd. at the time of execution of the test.

TA Technology (Shanghai) Co., Ltd. is liable to the client for the maintenance by its personnel of the confidentiality of all information related to the items under test and the results of the test. This report only refers to the item that has undergone the test.

This report standalone dose not constitute or imply by its own an approval of the product by the certification Bodies or competent Authorities. This report cannot be used partially or in full for publicity and/or promotional purposes without previous written approval of **TA Technology (Shanghai) Co., Ltd.** and the Accreditation Bodies, if it applies.

If the electrical report is inconsistent with the printed one, it should be subject to the latter.

1.2. Testing Laboratory

Company: TA Technology (Shanghai) Co., Ltd.
Address: No.145, Jintang Rd, Tangzhen Industry Park, Pudong Shanghai, China
City: Shanghai
Post code: 201201
Country: P. R. China
Contact: Yang Weizhong
Telephone: +86-021-50791141/2/3
Fax: +86-021-50791141/2/3-8000
Website: <http://www.ta-shanghai.com>
E-mail: yangweizhong@ta-shanghai.com

TA Technology (Shanghai) Co., Ltd. Test Report

Report No. RZA1102-0186HAC02R1

Page 5 of 89

1.3. Applicant Information

Company: Huawei Technologies Co., Ltd.
Address: Bantian, Longgang District
City: Shenzhen
Postal Code: 518129
Country: P.R. China
Contact: Wang Yue
Telephone: 0755-28780808
Fax: 0755-28780808

1.4. Manufacturer Information

Company: Huawei Technologies Co., Ltd.
Address: Bantian, Longgang District
City: Shenzhen
Postal Code: 518129
Country: P.R. China
Telephone: 0755-28780808
Fax: 0755-28780808

TA Technology (Shanghai) Co., Ltd.

Test Report

Report No. RZA1102-0186HAC02R1

Page 6 of 89

1.5. Information of EUT

General Information

Device Type:	Portable Device		
Product Name:	CDMA 1X Digital Mobile Telephone		
MEID:	A0000020F25561		
Hardware Version:	Ver.C		
Software Version:	M580C45B102		
Antenna Type:	Internal Antenna		
Device Operating Configurations:			
Supporting Mode(s):	CDMA Cellular/CDMA PCS/CDMA AWS; (tested)		
Test Modulation:	QPSK		
Operating Frequency Range(s):	Mode	Tx (MHz)	Rx (MHz)
	CDMA Cellular	824.7 ~ 848.31	869.7 ~ 893.31
	CDMA PCS	1851.25 ~ 1908.75	1931.25 ~ 1988.75
	CDMA AWS	1711.25 ~ 1752.5	2111.25 ~ 2152.5
Test Channel:Middle	384	(CDMA Cellular)	(tested)
	600	(CDMA PCS)	(tested)
	450	(CDMA AWS)	(tested)
Power Class:	CDMA Cellular: Tested with Power Control All up bits		
	CDMA PCS: Tested with Power Control All up bits		
	CDMA AWS: Tested with Power Control All up bits		

TA Technology (Shanghai) Co., Ltd.

Test Report

Report No. RZA1102-0186HAC02R1

Page 7 of 89

Auxiliary Equipment Details

AE1:Battery

Model: HB4A1H
Manufacturer: Huawei Technologies Co., Ltd.
SN: YACAC01HI4910648

Equipment Under Test (EUT) is a model of CDMA 1X Digital Mobile Telephone. The device has an internal antenna for CDMA Tx/Rx. T-Coil is tested for CDMA Cellular, CDMA PCS and CDMA AWS.

The sample under test was selected by the Client.

Components list please refer to documents of the manufacturer.

1.6. The Ambient Conditions during Test

Temperature	Min. = 18°C, Max. = 28 °C
Relative humidity	Min. = 0%, Max. = 80%
Ground system resistance	< 0.5 Ω
Ambient noise is checked and found very low and in compliance with requirement of standards. Reflection of surrounding objects is minimized and in compliance with requirement of standards.	

1.7. T-Coil signal quality categories of each tested Mode

Band	Category
CDMA Cellular	T3
CDMA PCS	T3
CDMA AWS	T3

1.8. Test Date

The test is performed on March 6, 2011.

2. Test Information

2.1. Operational Conditions during Test

2.1.1. General Description of Test Procedures

The phone was tested in all normal configurations for the ear use. The EUT is mounted in the device holder equivalent as for classic dosimeter measurements. The acoustic output of the EUT shall coincide with the center point of the area formed by the dielectric wire and the middle bar of the arch's top frame. The EUT shall be moved vertically upwards until it touches the frame. The fine adjustment is possible by sliding the complete EUT holder on the yellow base plate of the Test Arch phantom. During the test, the EUT is selected on T-Coil mode, the LCD backlight is turned off and volume is adjusted to maximum level.

2.1.2. CDMA Test Configuration

A communication link is set up with a System Simulator (SS) by RF cable, and a call is established. The Absolute Radio Frequency Channel Number (ARFCN) are allocated to 384 respectively in the case of CDMA Cellular, allocated to 600 respectively in the case of CDMA PCS, allocated to 450 respectively in the case of CDMA AWS. T-Coil configurations is measured in RC1 with the EUT configured to transmit at full rate using Loopback Service Option SO3, at the same time the EUT shall be operated at its maximum RF output power setting.

2.2. T-Coil Measurements System Configuration

2.2.1. T-coil Measurement Set-up

These measurements are performed using the DASY5 automated dosimetric assessment system. It is made by Schmid & Partner Engineering AG (SPEAG) in Zurich, Switzerland. It consists of high precision robotics system (Stäubli), robot controller, Intel Core2 computer, near-field probe, probe alignment sensor. The robot is a six-axis industrial robot performing precise movements. Cell controller systems contain the power supply, robot controller, teach pendant (Joystick) and remote control, and are used to drive the robot motors. The Stäubli Robot is connected to the cell controller to allow software manipulation of the robot. A data acquisition electronic (DAE) circuit performs the signal amplification; signal multiplexing, AD-conversion, offset measurements, mechanical surface detection, collision detection, etc. is connected to the Electro-optical coupler (EOC). The EOC performs the conversion from the optical into digital electric signal of the DAE and transfers data to the PC plug-in card.

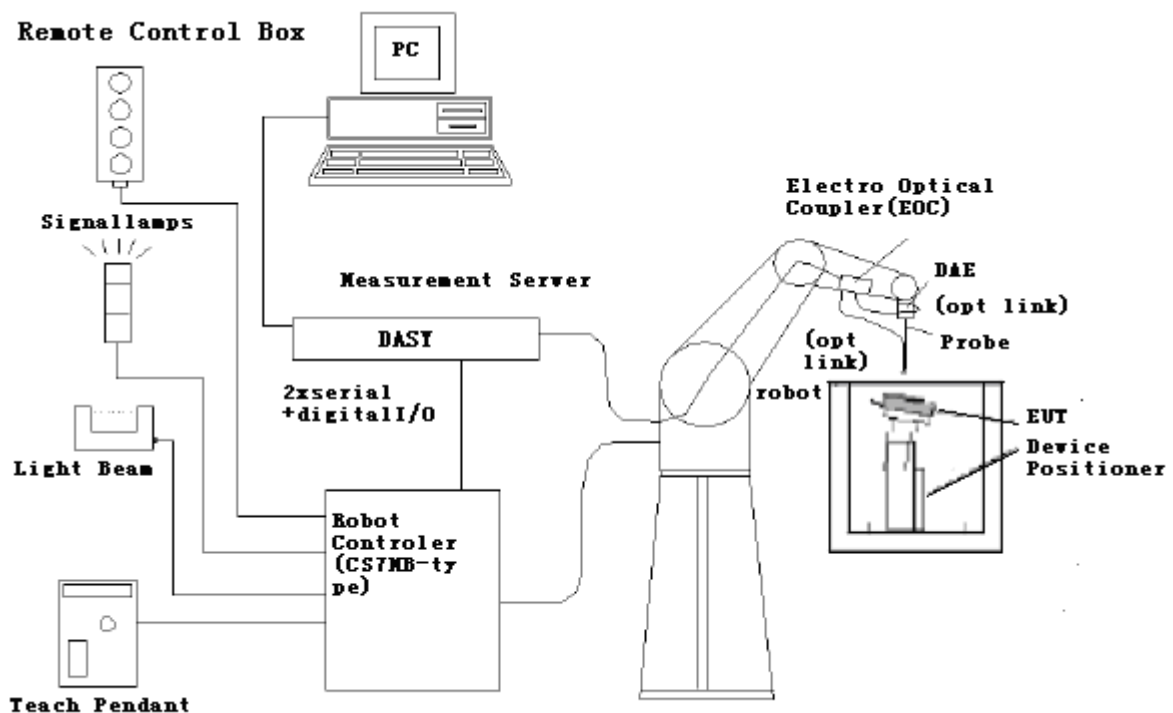


Figure 1 T-Coil Test Measurement Set-up

The DAE4 consists of a highly sensitive electrometer-grade preamplifier with auto-zeroing, a channel and gain-switching multiplexer, a fast 16 bit AD-converter and a command decoder and control logic unit. Transmission to the PC-card is accomplished through an optical downlink for data and status information and an optical uplink for commands and clock lines. The mechanical probe mounting device includes two different sensor systems for frontal and sidewise probe contacts. They are also used for mechanical surface detection and probe collision detection. The robot uses its own controller with a built in VME-bus computer.

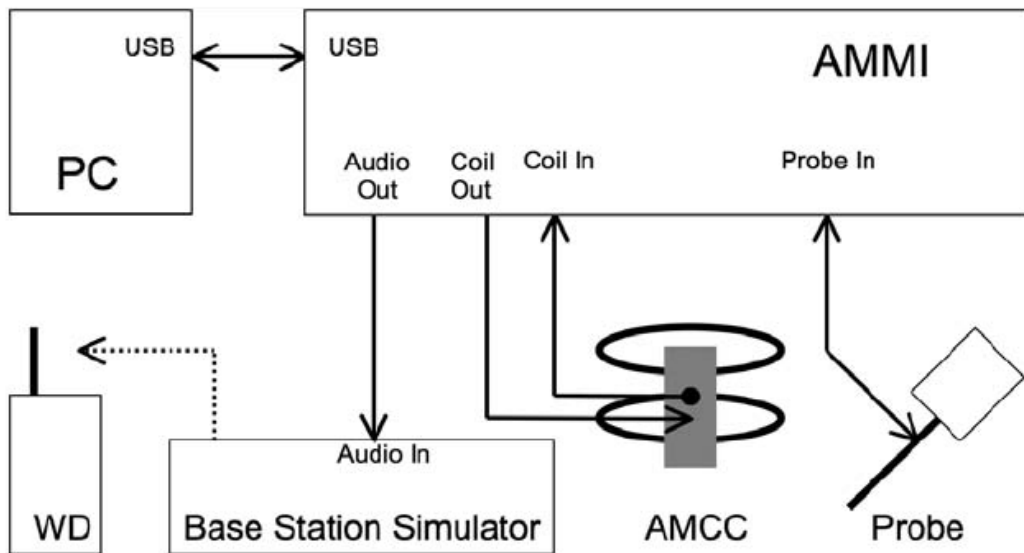


Figure 2 T-Coil Test Measurement Set-up

2.2.2. AM1D Probe

The AM1D probe is an active probe with a single sensor. It is fully RF-shielded and has a rounded tip 6mm in diameter incorporating a pickup coil with its center offset 3mm from the tip and the sides. The symmetric signal preamplifier in the probe is fed via the shielded symmetric output cable from the AMMI with a 48V “phantom” voltage supply. The 7-pin connector on the back in the axis of the probe does not carry any signals. It is mounted to the DAE for the correct orientation of the sensor. If the probe axis is tilted 54.7 degree from the vertical, the sensor is approximately vertical when the signal connector is at the underside of the probe (cable hanging downwards).

Specification

frequency range	0.1 - 20 kHz (RF sensitivity <-100 dB, fully RF shielded)
sensitivity	<-50 dB A/m @ 1 kHz
pre-amplifier	40 dB, symmetric
dimensions	tip diameter / length: 6 / 290 mm, sensor according to ANSI-C63.19



Figure 3 AM1D Probe

2.2.3. Audio Magnetic Measurement Instrument (AMMI)

The Audio Magnetic Measuring Instrument (AMMI) is a desktop 19-inch unit containing a sampling unit, a waveform generator for test and calibration signals, and a USB interface.



Figure 4 AMMI front panel

Port description:

Audio Out	BNC, audio signal to the base station simulator, for >500Ohm load
Coil Out	BNC, test and calibration signal to the AMCC (top connector), for 50Ohm load
Coil In	XLR, monitor signal from the AMCC BNO connector, 600 Ohm
Probe In	XLR, probe signal and phantom supply to the probe Lemo connector



Figure 5 AMMI rear side

Sampling rate	48 kHz / 24 bit
Dynamic range	85 dB
Test signal generation	User selectable and predefined (vis PC)
Calibration	Auto-calibration / full system calibration using AMCC with monitor output
Dimensions	482 x 65 x 270 mm

2.2.4. Helmholtz Calibration Coil (AMCC)

The Audio Magnetic Calibration coil is a Helmholtz Coil designed for calibration of the AM1D probe. The two horizontal coils generate a homogeneous magnetic field in the z direction. The DC input resistance is adjusted by a series resistor to approximately 50Ohm, and a shunt resistor of 10Ohm permits monitoring the current with a scale of 1:10

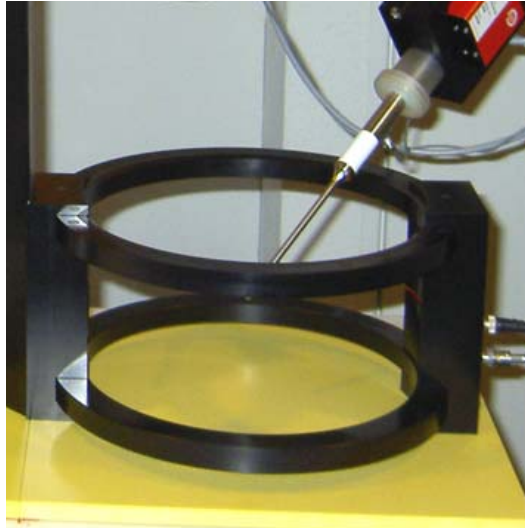


Figure 6 AMCC

Port description:

Signal	Connector	Resistance
Coil In	BNC	Typically 50Ohm
Coil Monitor	BNO	10Ohm ± 1% (100mV corresponding to 1 A/m)

Specification:

Dimensions	370 x 370 x 196 mm, according to ANSI-C63.19
-------------------	--

2.2.5. Test Arch Phantom & Phone Positioner

The Test Arch phantom should be positioned horizontally on a stable surface. Reference markings on the Phantom allow the complete setup of all predefined phantom positions and measurement grids by manually teaching three points in the robot. It enables easy and well defined positioning of the phone and validation dipoles as well as simple teaching of the robot (Dimensions: 370 x 370 x 370 mm).

The Device reference point is set for the EUT at 6.3 mm, the Grid reference point is on the upper surface at the origin of the coordinates, and the “user point \Height Check 0.5 mm” is 0.5mm above the center, allowing verification of the gap of 0.5mm while the probe is positioned there.

The Phone Positioner supports accurate and reliable positioning of any phone with effect on near field $\pm 0.5\text{ dB}$.



Figure 7 T-coil Phantom & Device Holder

2.3. T-Coil measurement points and reference plane

The following figure illustrates the three standard probe orientations. Position 1 is the axial orientation of the probe coil; orientation 2 and orientation 3 are radial orientations. The space between the measurement positions is not fixed. It is recommended that a scan of the EUT be done for each probe coil orientation and that the maximum level recorded be used as the reading for that orientation of the probe coil.

1) The reference plane is the planar area that contains the highest point in the area of the phone that normally rests against the user's ear. It is parallel to the centerline of the receiver area of the phone and is defined by the points of the receiver-end of the EUT handset, which, in normal handset use, rest against the ear.

2) The measurement plane is parallel to, and 10 mm in front of, the reference plane.

3) The reference axis is normal to the reference plane and passes through the center of the receiver speaker section (or the center of the hole array); or may be centered on a secondary inductive source. The actual location of the measurement point shall be noted in the test report as the measurement reference point.

4) The measurement points may be located where the axial and radial field intensity measurements are optimum with regard to the requirements. However, the measurement points should be near the acoustic output of the EUT and shall be located in the same half of the phone as the EUT receiver. In a EUT handset with a centered receiver and a circularly symmetrical magnetic field, the measurement axis and the reference axis would coincide.

5) The relative spacing of each measurement orientation is not fixed. The axial and two radial orientations should be chosen to select the optimal position.

6) The measurement point for the axial position is located 10 mm from the reference plane on the measurement axis. The actual location of the measurement point shall be noted in test reports and designated as the measurement reference point.

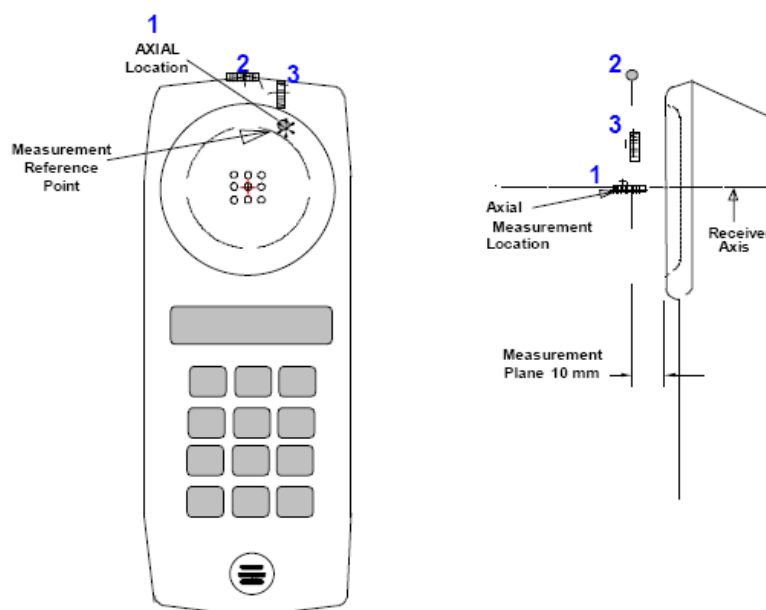


Figure 8 Axis and planes for EUT audio frequency magnetic field measurements

2.4. T-Coil Test Procedures

The following illustrate a typical test scan over a wireless communications device:

- 1) Geometry and signal check: system probe alignment, proper operation of the field probe, probe measurement system, other instrumentation, and the positioning system was confirmed. A surface calibration was performed before each setup change to ensure repeatable spacing and proper maintenance of the measurement plane using the test Arch.
- 2) Set the reference drive level of signal voice defined in C63.19 per 6.3.2.1.
- 3) The ambient and test system background noise (dB A/m) was measured as well as ABM2 over the full measurement. The maximum noise level must be at least 10dB below the limit of C63.19 per 7.3.2.
- 4) The DUT was positioned in its intended test position, acoustic output point of the device perpendicular to the field probe.
- 5) The DUT operation for maximum rated RF output power was configured and connected by using of coaxial cable connection to the base station simulator at the test channel and other normal operating parameters as intended for the test. The battery was ensured to be fully charged before each test. The center sub-grid was centered over the center of the acoustic output (also audio band magnetic output, if applicable). The DUT audio output was positioned tangent (as physically possible) to the measurement plane.
- 6) The DUT's RF emission field was eliminated from T-coil results by using a well RF-shielding of the probe, AM1D, and by using of coaxial cable connection to a Base Station Simulator. One test channel was pre-measurement to avoid this possibility.
- 7) Determined the optimal measurement locations for the DUT by following the three steps, coarse resolution scan, fine resolution scans, and point measurement, as described in C63.19 per 6.3.4.4. At each measurement locations, samples in the measurement window duration were evaluated to get ABM1 and the signal spectrum. The noise measurement was performed after the scan with the signal, the same happened, just with the voice signal switched off. The ABM2 was calculated from this second scan.
- 8) All results resulting from a measurement point in a T-Coil job were calculated from the signal samples during this window interval. ABM values were averaged over the sequence of these samples.
- 9) At an optimal point measurement, the SNR (ABM1/ABM2) was calculated for axial,radial transverse and radial longitudinal orientation, and the frequency response was measured in axial axis.
- 10) Corrected for the frequency response after the DUT measurement since the DASY5 system had known the spectrum of the input signal by using a reference job.
- 11) In SEMCAD postprocessing, the spectral points are in addition scaled with the high-pass (half-band) and the A-weighting, bandwidth compensated factor (BWC) and those results are final as shown in this report.

3. T-Coil Performance Requirements

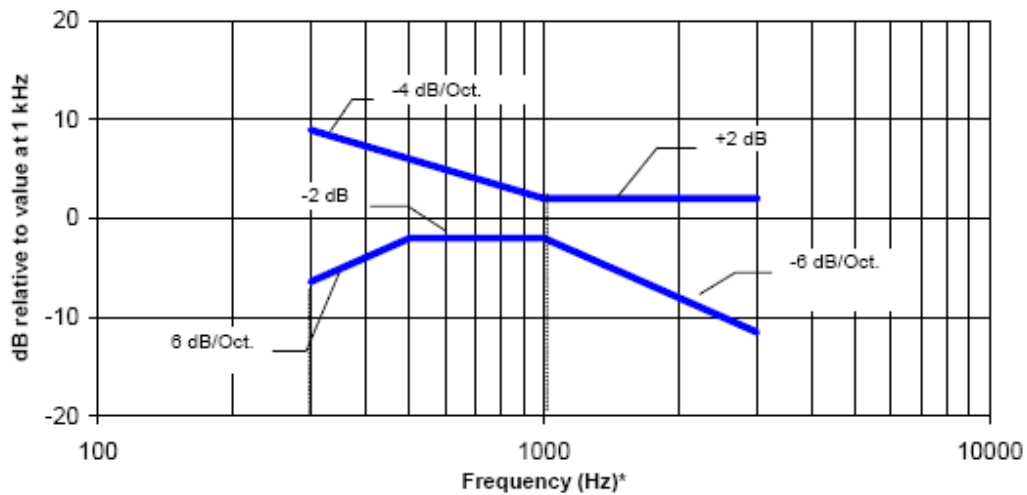
In order to be rated for T-Coil use, a EUT shall meet the requirements for signal level and signal quality contained in this part.

3.1.1. T-Coil coupling field intensity

When measured as specified in ANSI C63.19, the T-Coil signal shall be ≥ -18 dB (A/m) at 1 kHz, in a 1/3 octave band filter for all orientations.

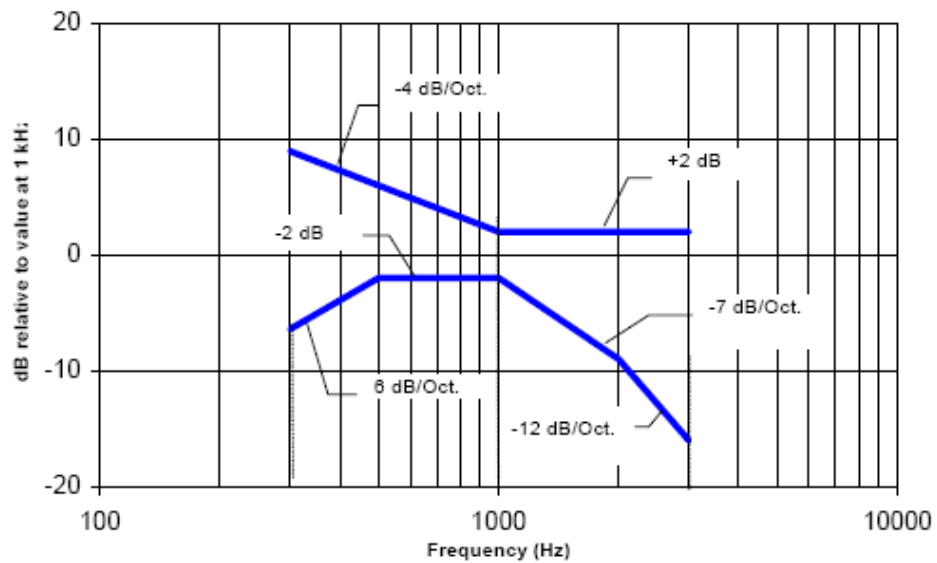
3.1.2. Frequency response

The frequency response of the axial component of the magnetic field, measured in 1/3 octave bands, shall follow the response curve specified in this sub-clause, over the frequency range 300 Hz to 3000 Hz. The following figures provide the boundaries for the specified frequency. These response curves are for true field strength measurements of the T-Coil signal. Thus the 6 dB/octave probe response has been corrected from the raw readings.



NOTE—Frequency response is between 300 Hz and 3000 Hz.

Figure 9 Magnetic field frequency response for EUTs with a field ≤ -15 dB (A/m) at 1 kHz



NOTE—Frequency response is between 300 Hz and 3000 Hz.

Figure 10 Magnetic field frequency response for EUTs with a field that exceeds -15 dB(A/m) at 1 kHz

3.1.3. Signal quality

This part provides the signal quality requirement for the intended T-Coil signal from a EUT. Only the RF immunity of the hearing aid is measured in T-Coil mode. It is assumed that a hearing aid can have no immunity to an interference signal in the audio band, which is the intended reception band for this mode. So, the only criteria that can be measured is the RF immunity in T-Coil mode. This is measured using the same procedure as for the audio coupling mode and at the same levels.

The worst signal quality of the three T-Coil signal measurements shall be used to determine the T-Coil mode category per Table 1

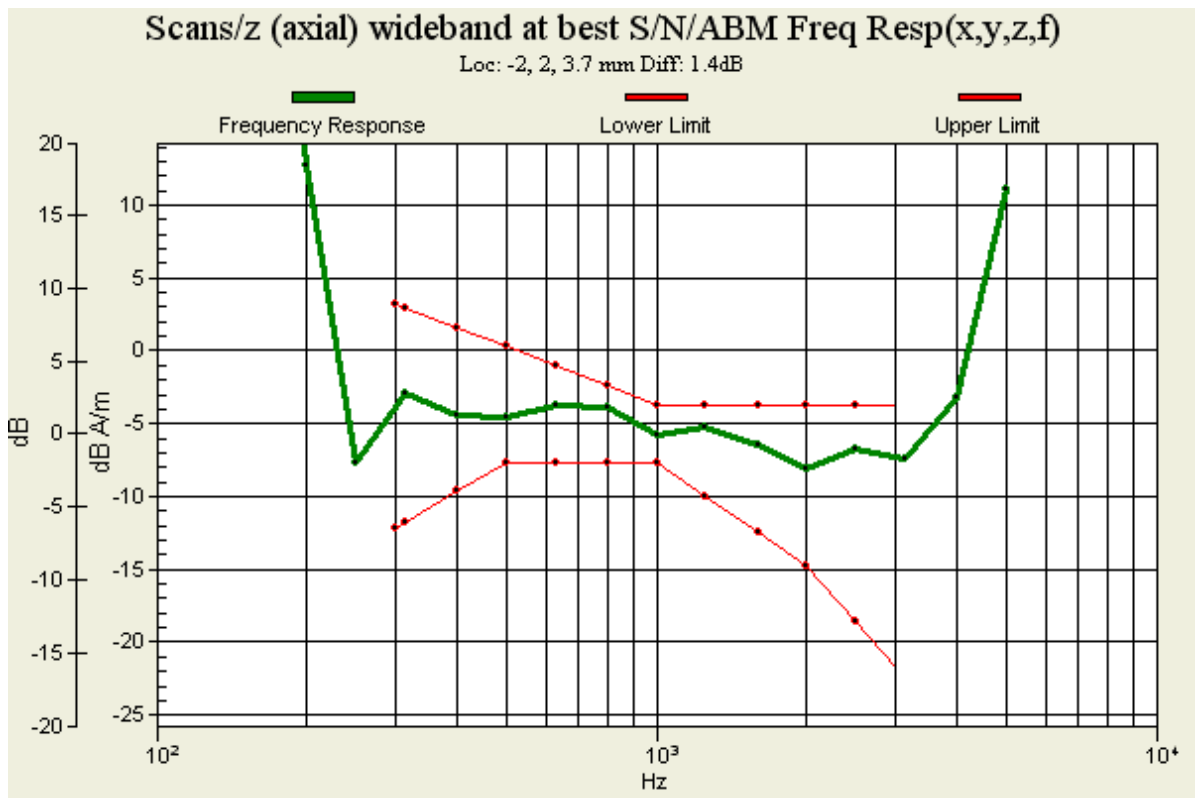
Table 1: T-Coil signal quality categories

Category	Telephone parameters WD signal quality [(signal + noise) – to – noise ratio in decibels]
Category T1	0 dB to 10 dB
Category T2	10 dB to 20 dB
Category T3	20 dB to 30 dB
Category T4	> 30 dB

4. Summary Test Results

4.1. CDMA Cellular (slip close)

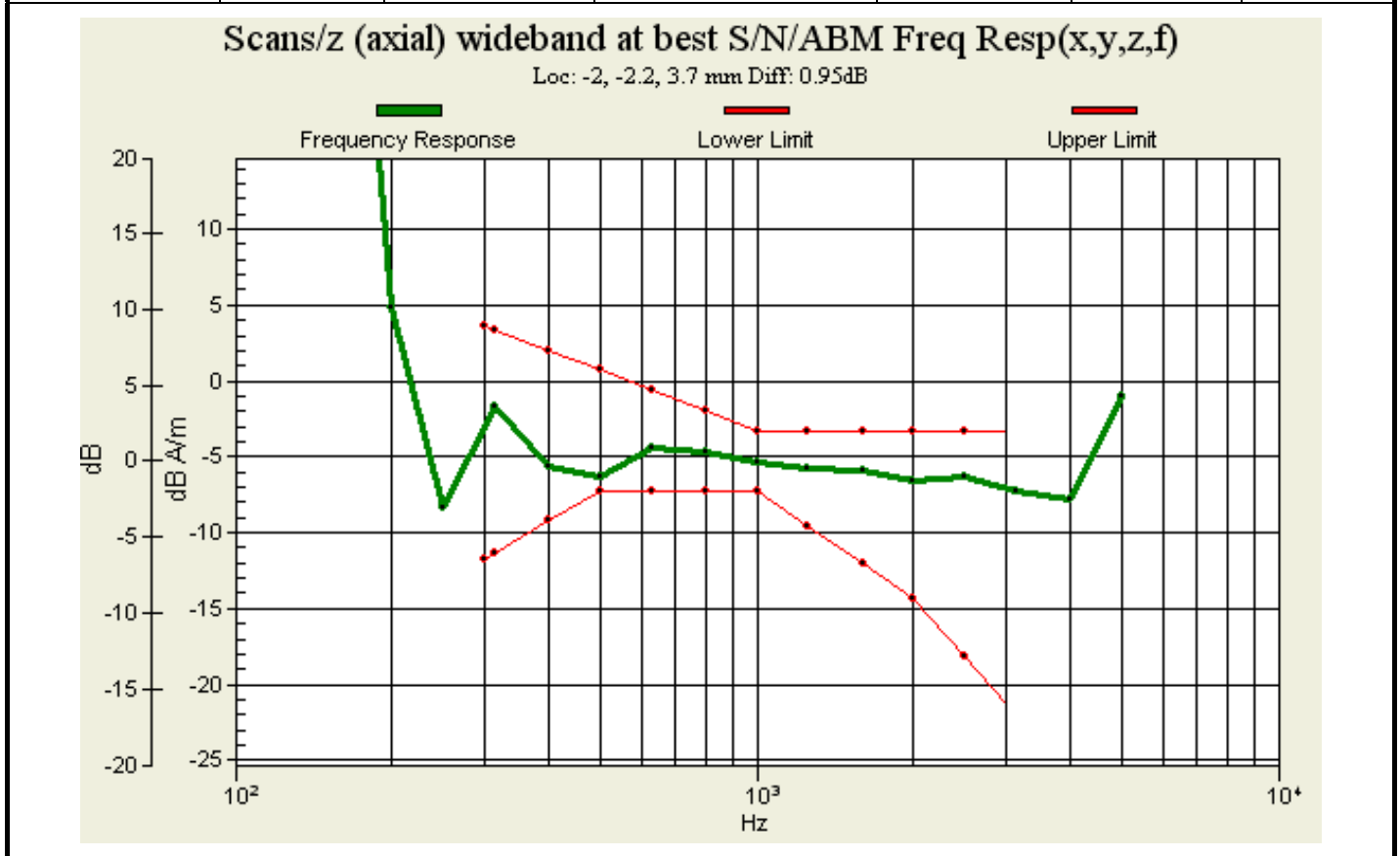
Band-Channel	Probe Orientation	Measurement Position (x,y)[mm]	ABM1 \geq -18dB(A/m) (Signal)	SNR(ABM1/ABM2)(dB)	Frequency Response	T-Rating
CDMA Cellular-384	x (Radial):	(-9,0)	-15.8	22.2	Pass	T3
	y (Radial):	(-3,6)	-16.6	31.9		T4
	z (Axial):	(-2,2)	-7.34	26.4		T3



TA Technology (Shanghai) Co., Ltd. Test Report

4.2. CDMA Cellular (slip open)

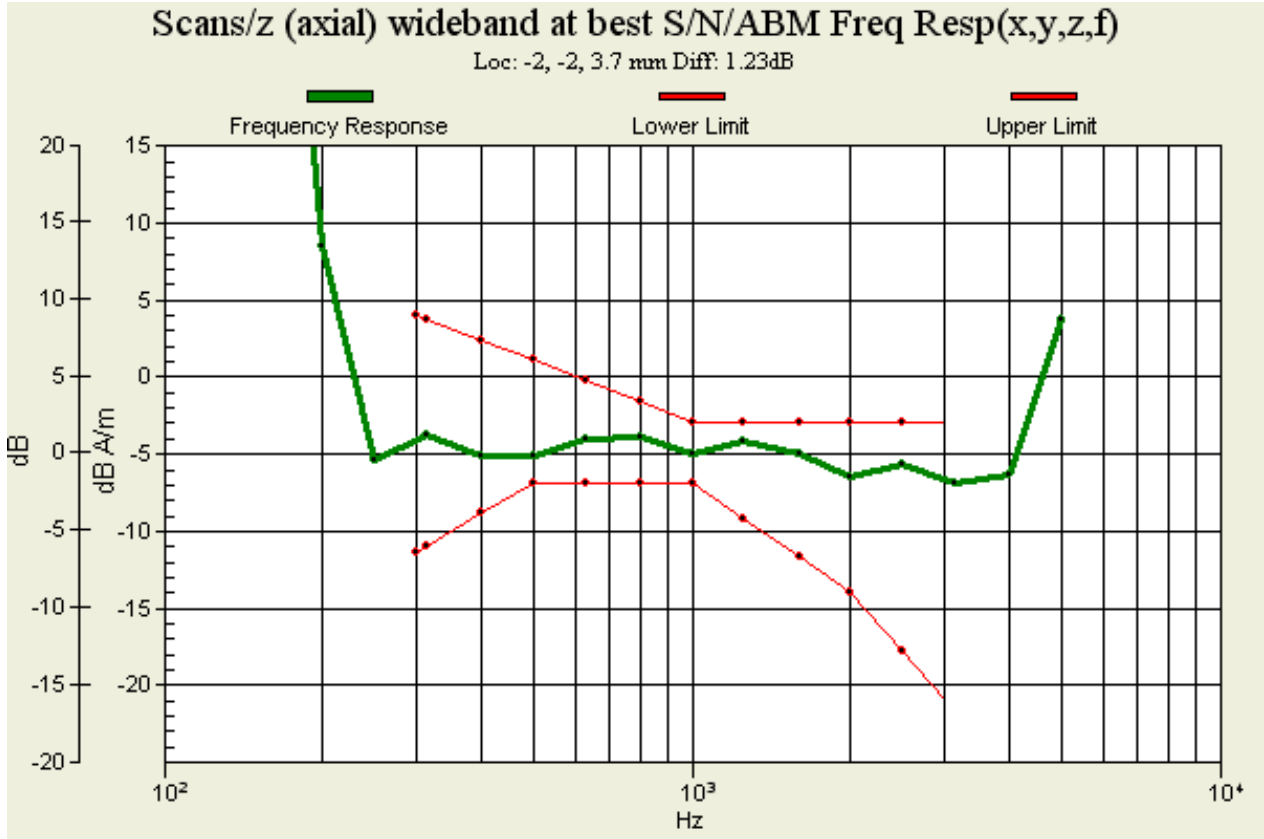
Band-Channel	Probe Orientation	Measurement Position (x,y)[mm]	ABM1 \geq -18dB(A/m) (Signal)	SNR(ABM1/ABM2)(dB)	Frequency Response	T-Rating
CDMA Cellular-384	x (Radial):	(-6,-1.2)	-15.6	29.3	Pass	T3
	y (Radial):	(0,7.8)	-15.3	38.4		T4
	z (Axial):	(-2,-2.2)	-8.85	38.1		T4



TA Technology (Shanghai) Co., Ltd. Test Report

4.3. CDMA PCS (slip close)

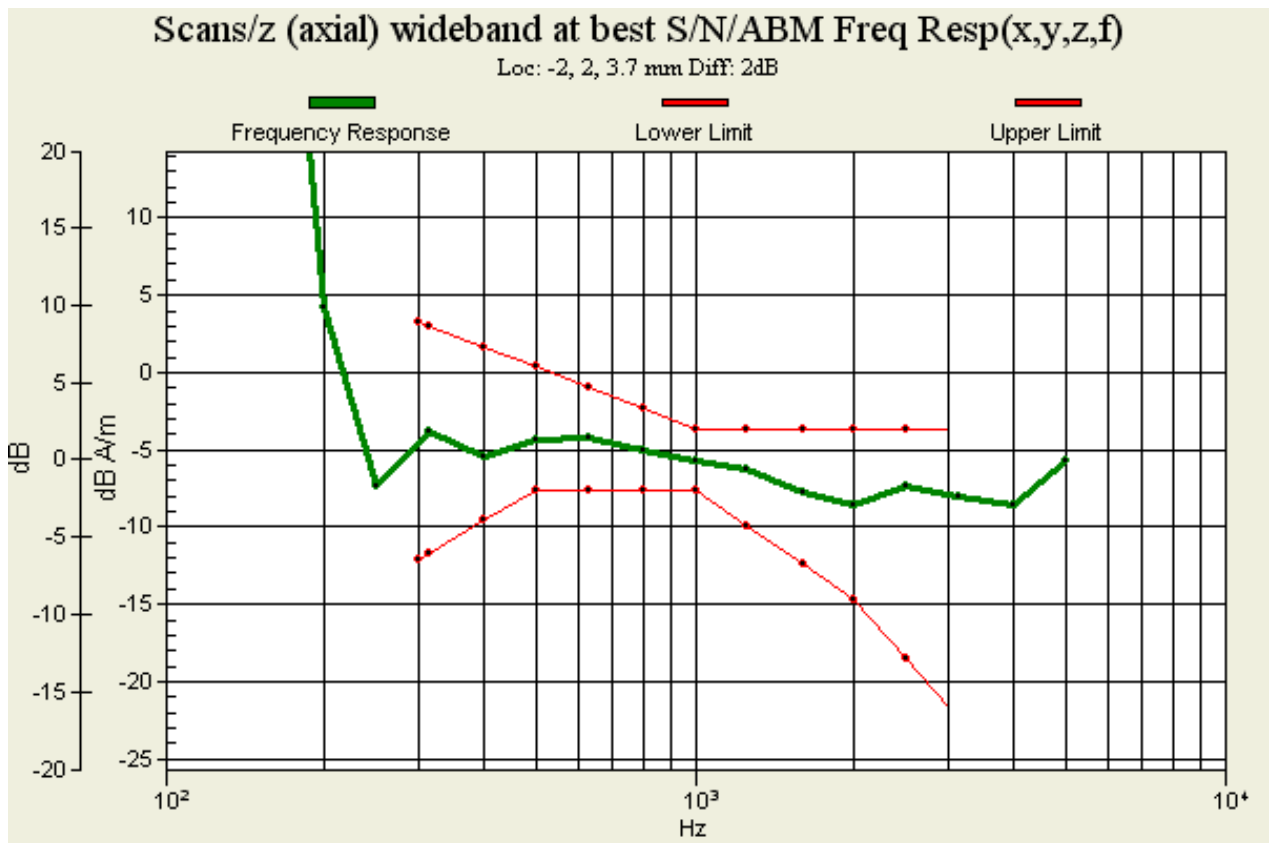
Band-Channel	Probe Orientation	Measurement Position (x,y)[mm]	ABM1 \geq -18dB(A/m) (Signal)	SNR(ABM1/ABM2)(dB)	Frequency Response	T-Rating
CDMA PCS-600	x (Radial):	(-9,3)	-16.5	24.9	Pass	T3
	y (Radial):	(0,9)	-15.4	33.2		T4
	z (Axial):	(-2,-2)	-7.02	34		T4



TA Technology (Shanghai) Co., Ltd. Test Report

4.4. CDMA PCS (slip open)

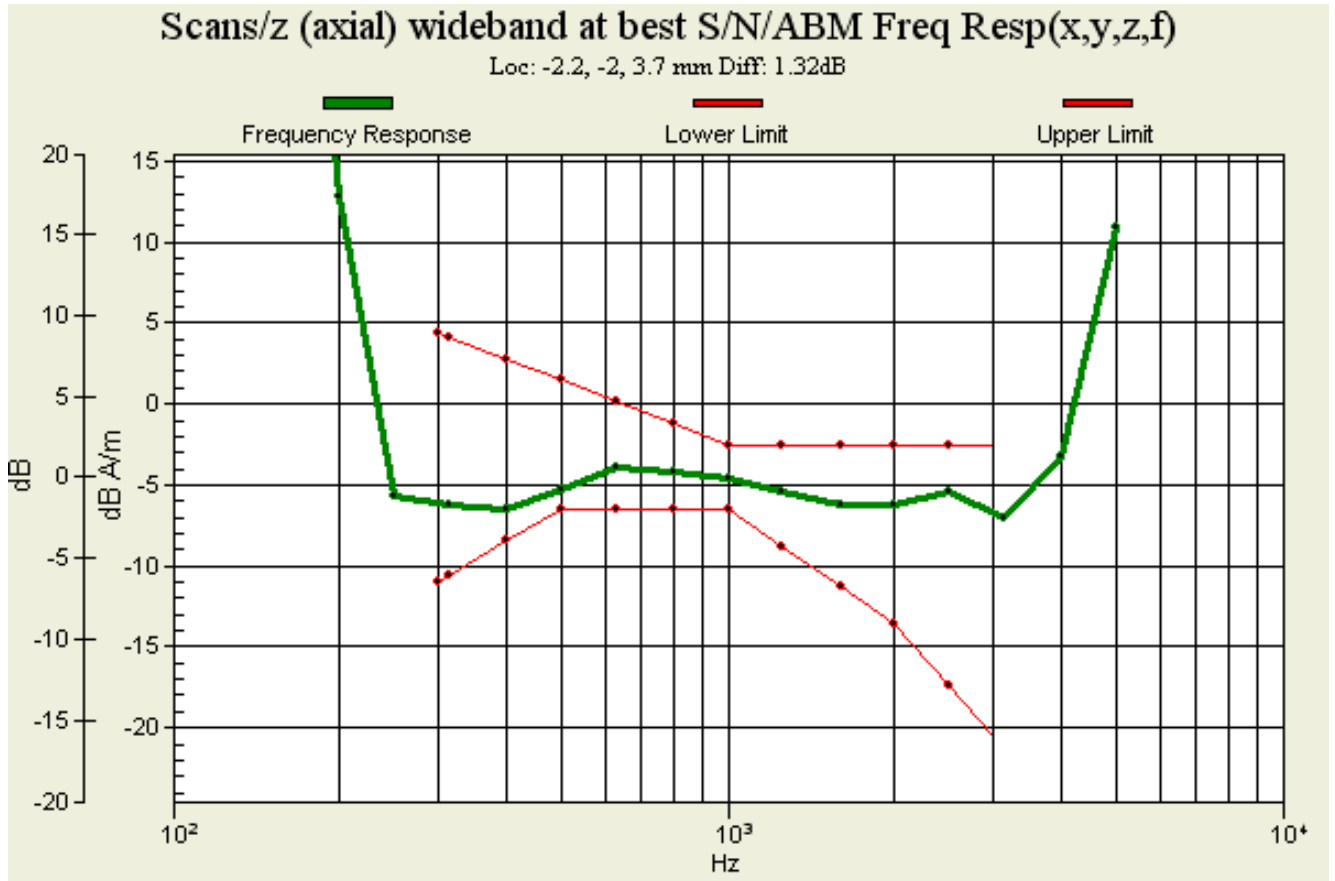
Band-Channel	Probe Orientation	Measurement Position (x,y)[mm]	ABM1 \geq -18dB(A/m) (Signal)	SNR(ABM1/ABM2)(dB)	Frequency Response	T-Rating
CDMA PCS-600	x (Radial):	(-9,3)	-16	33.8	Pass	T4
	y (Radial):	(0,-6)	-15.4	39.5		T4
	z (Axial):	(-2,2)	-8.15	43.7		T4



TA Technology (Shanghai) Co., Ltd. Test Report

4.5. CDMA AWS (slip close)

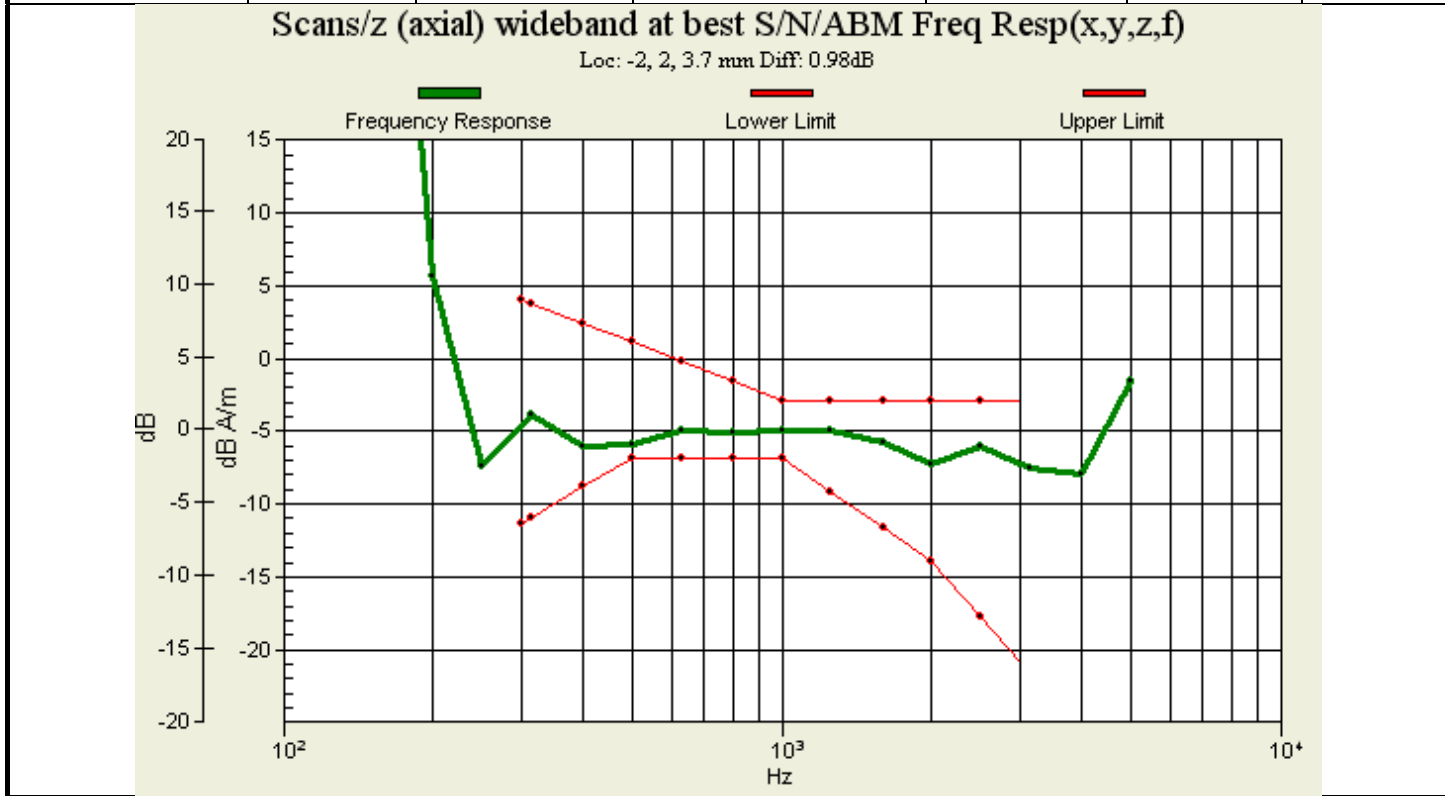
Band-Channel	Probe Orientation	Measurement Position (x,y)[mm]	ABM1 \geq -18dB(A/m) (Signal)	SNR(ABM1/ABM2)(dB)	Frequency Response	T-Rating
CDMA AWS-450	x (Radial):	(-7.2,3)	-17.1	20.5	Pass	T3
	y (Radial):	(-1.2,6)	-16.4	28		T3
	z (Axial):	(-2.2,-2)	-7.88	26.1		T3



TA Technology (Shanghai) Co., Ltd. Test Report

4.6. CDMA AWS (slip open)

Band-Channel	Probe Orientation	Measurement Position (x,y)[mm]	ABM1 \geq -18dB(A/m) (Signal)	SNR(ABM1/ABM2)(dB)	Frequency Response	T-Rating
CDMA AWS-450	x (Radial):	(-9,3)	-16.2	27.6	Pass	T3
	y (Radial):	(0,-6)	-15.9	37.4		T4
	z (Axial):	(-2,2)	-7.84	40.3		T4



Note:

1. The LCD backlight is turn off and volume is adjusted to maximum level during T-Coil testing.
2. Signal strength measurement scan plots are presented in Annex B.

TA Technology (Shanghai) Co., Ltd.

Test Report

Report No. RZA1102-0186HAC02R1

Page 25 of 89

5. Measurement Uncertainty

No.	Error source	Type	Uncertainty Value a_i (%)	Prob. Dist.	k	ABM 1 c_i	ABM2 c_i	Std. Unc. ABM1 u_i (%)	Std. Unc. ABM2 u_i (%)	Degree of freedom V_{eff} or V_i
1	System Repeatability	A	0.016	N	1	1	1	0.016	0.016	9
Probe Sensitivity										
2	Reference Level	B	3.0	R	$\sqrt{3}$	1	1	3.0	3.0	∞
3	AMCC Geometry	B	0.4	R	$\sqrt{3}$	1	1	0.2	0.2	∞
4	AMCC Current	B	0.6	R	$\sqrt{3}$	1	1	0.4	0.4	∞
5	Probe Positioning during Calibration	B	0.1	R	$\sqrt{3}$	1	1	0.1	0.1	∞
6	Noise Contribution	B	0.7	R	$\sqrt{3}$	$\frac{0.014}{3}$	1	0.0	0.4	∞
7	Frequency Slope	B	5.9	R	$\sqrt{3}$	0.1	1	0.3	3.5	∞
Probe System										
8	Repeatability / Drift	B	1.0	R	$\sqrt{3}$	1	1	0.6	0.6	∞
9	Linearity / Dynamic Range	B	0.6	N	1	1	1	0.4	0.4	∞
10	Acoustic Noise	B	1.0	R	$\sqrt{3}$	0.1	1	0.1	0.6	∞
11	Probe Angle	B	2.3	R	$\sqrt{3}$	1	1	1.4	1.4	∞
12	Spectral Processing	B	0.9	R	$\sqrt{3}$	1	1	0.5	0.5	∞
13	Integration Time	B	0.6	N	1	1	5	0.6	3.0	∞
14	Field Distribution	B	0.2	R	$\sqrt{3}$	1	1	0.1	0.1	∞
Test Signal										
15	Ref.Signal Spectral Response	B	0.6	R	$\sqrt{3}$	0	1	0.0	0.4	∞
Positioning										
16	Probe Positioning	B	1.9	R	$\sqrt{3}$	1	1	1.1	1.1	∞
17	Phantom Thickness	B	0.9	R	$\sqrt{3}$	1	1	0.5	0.5	∞

TA Technology (Shanghai) Co., Ltd.
Test Report

Report No. RZA1102-0186HAC02R1

Page 26 of 89

18	DUT Positioning	B	1.9	R	$\sqrt{3}$	1	1	1.1	1.1	∞
External Contributions										
19	RF Interference	B	0.0	R	$\sqrt{3}$	1	0.3	0.0	0.0	∞
20	Test Signal Variation	B	2.0	R	$\sqrt{3}$	1	1	1.2	1.2	∞
Combined Std. Uncertainty (ABM Field)		$u'_c = \sqrt{\sum_{i=1}^{20} c_i^2 u_i^2}$						4.1	6.1	
Expanded Std. Uncertainty		$u_e = 2u_c$		N		$k = 2$		8.2	12.2	

TA Technology (Shanghai) Co., Ltd.
Test Report

Report No. RZA1102-0186HAC02R1

Page 27 of 89

6. Main Test Instruments

No.	Name	Type	Serial Number	Calibration Date	Valid Period
01	Audio Magnetic 1D Field Probe	AM1DV3	3082	November 29, 2010	One year
02	Audio Magnetic Calibration Coil	SD HAC P02A	1112	N/A	N/A
03	Audio Measuring Instrument	AMMI	1101	N/A	N/A
05	DAE	DAE4	871	November 18, 2010	One year
06	Software	DASY5, V5.0 Build 120	N/A	N/A	N/A
07	Software	SEMCAD X Version 13.4 Build 45	N/A	N/A	N/A
08	Universal Radio Communication Tester	CMU 200	118133	May 27, 2010	One year

*****END OF REPORT BODY*****

ANNEX A: Test Layout



Picture 1: HAC T-Coil System Layout

ANNEX B: Graph Results

T-Coil CDMA Cellular X longitudinal slip close

Date/Time: 3/6/2011 5:53:25 PM

Communication System: CDMA Cellular; Frequency: 836.52 MHz; Duty Cycle: 1:1

Ambient Temperature: 22.3 °C

Phantom section: TCoil Section

DASY5 Configuration:

Probe: AM1DV3 - 3082; alibrated: 11/29/2010

Electronics: DAE4 Sn871; Calibrated: 11/18/2010

Phantom: HAC Test Arch with AMCC; Type: SD HAC P01 BA; Serial: Not Specified

Measurement SW: DASY5, V5.0 Build 120; SEMCAD X Version 13.4 Build 45

Scans/x (longitudinal) 4.2mm 50 x 50/ABM Signal(x,y,z) (13x13x1):

Measurement grid: dx=10mm, dy=10mm

Signal Type: Audio File (.wav) 48k_voice_1kHz_1s.wav

Output Gain: 28.8

Measure Window Start: 0ms

Measure Window Length: 1000ms

BWC applied: 0.158027 dB

Device Reference Point: 0, 0, -6.3 mm

Category	Telephone parameters WD signal quality [(signal+noise)-to-noise ratio in decibels]
Category T1	0 dB to 10 dB
Category T2	10 dB to 20 dB
Category T3	20 dB to 30 dB
Category T4	> 30 dB

Cursor:

ABM1 comp = -15.1 dB A/m

BWC Factor = 0.158027 dB

Location: -8.3, 0, 3.7 mm

Scans/x (longitudinal) fine 3mm 42 x 6/ABM Signal(x,y,z) (15x3x1):

Measurement grid: dx=10mm, dy=10mm

Signal Type: Audio File (.wav) 48k_voice_1kHz_1s.wav

Output Gain: 28.8

Measure Window Start: 0ms

Measure Window Length: 1000ms

BWC applied: 0.158027 dB

Device Reference Point: 0, 0, -6.3 mm

Category	Telephone parameters WD signal quality
----------	--

TA Technology (Shanghai) Co., Ltd.
Test Report

Report No. RZA1102-0186HAC02R1

Page 30 of 89

[(signal+noise)-to-noise ratio in decibels]

Category T1	0 dB to 10 dB
Category T2	10 dB to 20 dB
Category T3	20 dB to 30 dB
Category T4	> 30 dB

Cursor:

ABM1 comp = -15.8 dB A/m

BWC Factor = 0.158027 dB

Location: -9, 0, 3.7 mm

Scans/x (longitudinal) fine 3mm 42 x 6/ABM SNR(x,y,z) (15x3x1):

Measurement grid: dx=10mm, dy=10mm

Signal Type: Audio File (.wav) 48k_voice_1kHz_1s.wav

Output Gain: 28.8

Measure Window Start: 0ms

Measure Window Length: 1000ms

BWC applied: 0.158027 dB

Device Reference Point: 0, 0, -6.3 mm

Category	Telephone parameters WD signal quality [(signal+noise)-to-noise ratio in decibels]
Category T1	0 dB to 10 dB
Category T2	10 dB to 20 dB
Category T3	20 dB to 30 dB
Category T4	> 30 dB

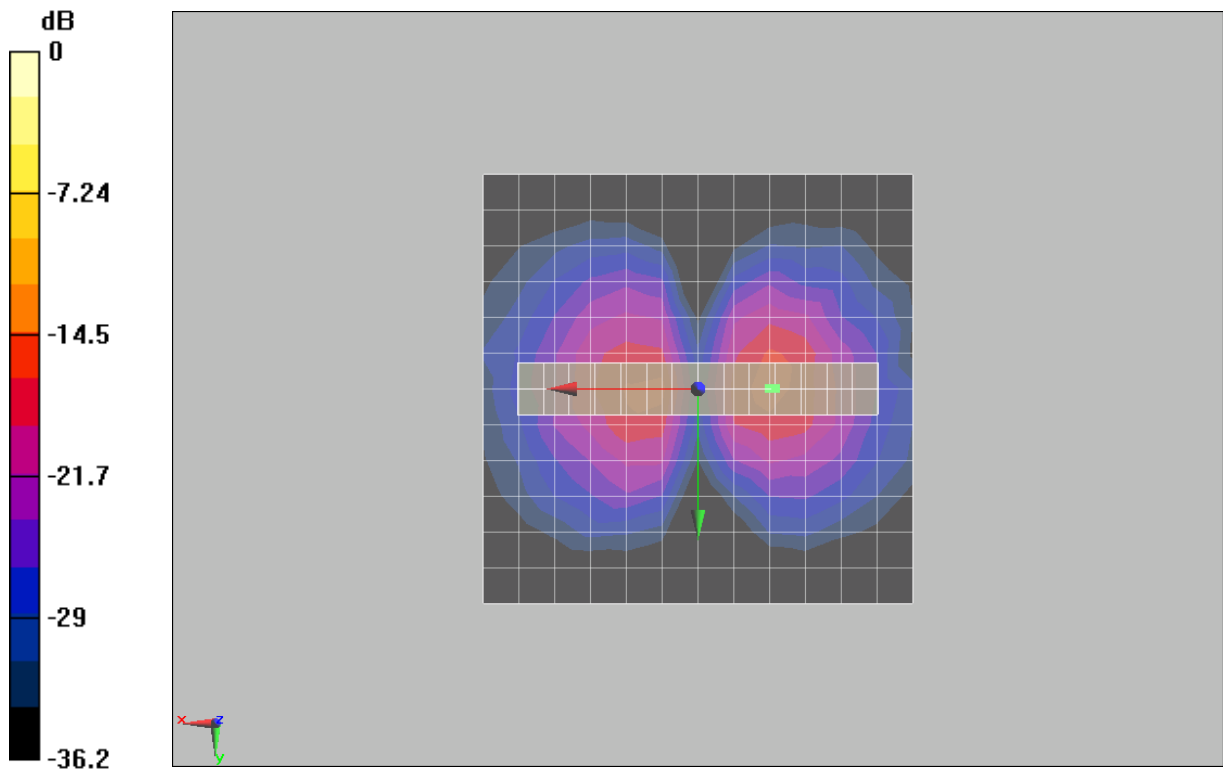
Cursor:

ABM1/ABM2 = 22.2 dB

ABM1 comp = -15.8 dB A/m

BWC Factor = 0.158027 dB

Location: -9, 0, 3.7 mm



0 dB = 1A/m

Figure 11 T-Coil CDMA Cellular X longitudinal slip close

TA Technology (Shanghai) Co., Ltd.
Test Report

Report No. RZA1102-0186HAC02R1

Page 32 of 89

T-Coil CDMA Cellular Y transversal slip close

Date/Time: 3/6/2011 6:05:08 PM

Communication System: CDMA Cellular; Frequency: 836.52 MHz; Duty Cycle: 1:1

Ambient Temperature: 22.3 °C

Phantom section: TCoil Section

DASY5 Configuration:

Probe: AM1DV3 - 3082; ; Calibrated: 11/29/2010

Electronics: DAE4 Sn871; Calibrated: 11/18/2010

Phantom: HAC Test Arch with AMCC; Type: SD HAC P01 BA; Serial: Not Specified

Measurement SW: DASY5, V5.0 Build 120; SEMCAD X Version 13.4 Build 45

Scans/y (transversal) 4.2mm 50 x 50/ABM Signal(x,y,z) (13x13x1):

Measurement grid: dx=10mm, dy=10mm

Signal Type: Audio File (.wav) 48k_voice_1kHz_1s.wav

Output Gain: 28.8

Measure Window Start: 0ms

Measure Window Length: 1000ms

BWC applied: 0.158027 dB

Device Reference Point: 0, 0, -6.3 mm

Category	Telephone parameters WD signal quality [(signal+noise)-to-noise ratio in decibels]
Category T1	0 dB to 10 dB
Category T2	10 dB to 20 dB
Category T3	20 dB to 30 dB
Category T4	> 30 dB

Cursor:

ABM1 comp = -15.9 dB A/m

BWC Factor = 0.158027 dB

Location: 0, -8.3, 3.7 mm

Scans/y (transversal) fine 3mm 6 x 42/ABM Signal(x,y,z) (3x15x1):

Measurement grid: dx=10mm, dy=10mm

Signal Type: Audio File (.wav) 48k_voice_1kHz_1s.wav

Output Gain: 28.8

Measure Window Start: 0ms

Measure Window Length: 1000ms

BWC applied: 0.158027 dB

Device Reference Point: 0, 0, -6.3 mm

Category	Telephone parameters WD signal quality [(signal+noise)-to-noise ratio in decibels]
----------	---

TA Technology (Shanghai) Co., Ltd.
Test Report

Category T1	0 dB to 10 dB
Category T2	10 dB to 20 dB
Category T3	20 dB to 30 dB
Category T4	> 30 dB

Cursor:

ABM1 comp = -15.6 dB A/m

BWC Factor = 0.158027 dB

Location: 0, -9, 3.7 mm

Scans/y (transversal) fine 3mm 6 x 42/ABM SNR(x,y,z) (3x15x1):

Measurement grid: dx=10mm, dy=10mm

Signal Type: Audio File (.wav) 48k_voice_1kHz_1s.wav

Output Gain: 28.8

Measure Window Start: 0ms

Measure Window Length: 1000ms

BWC applied: 0.158027 dB

Device Reference Point: 0, 0, -6.3 mm

Category	Telephone parameters WD signal quality [(signal+noise)-to-noise ratio in decibels]
Category T1	0 dB to 10 dB
Category T2	10 dB to 20 dB
Category T3	20 dB to 30 dB
Category T4	> 30 dB

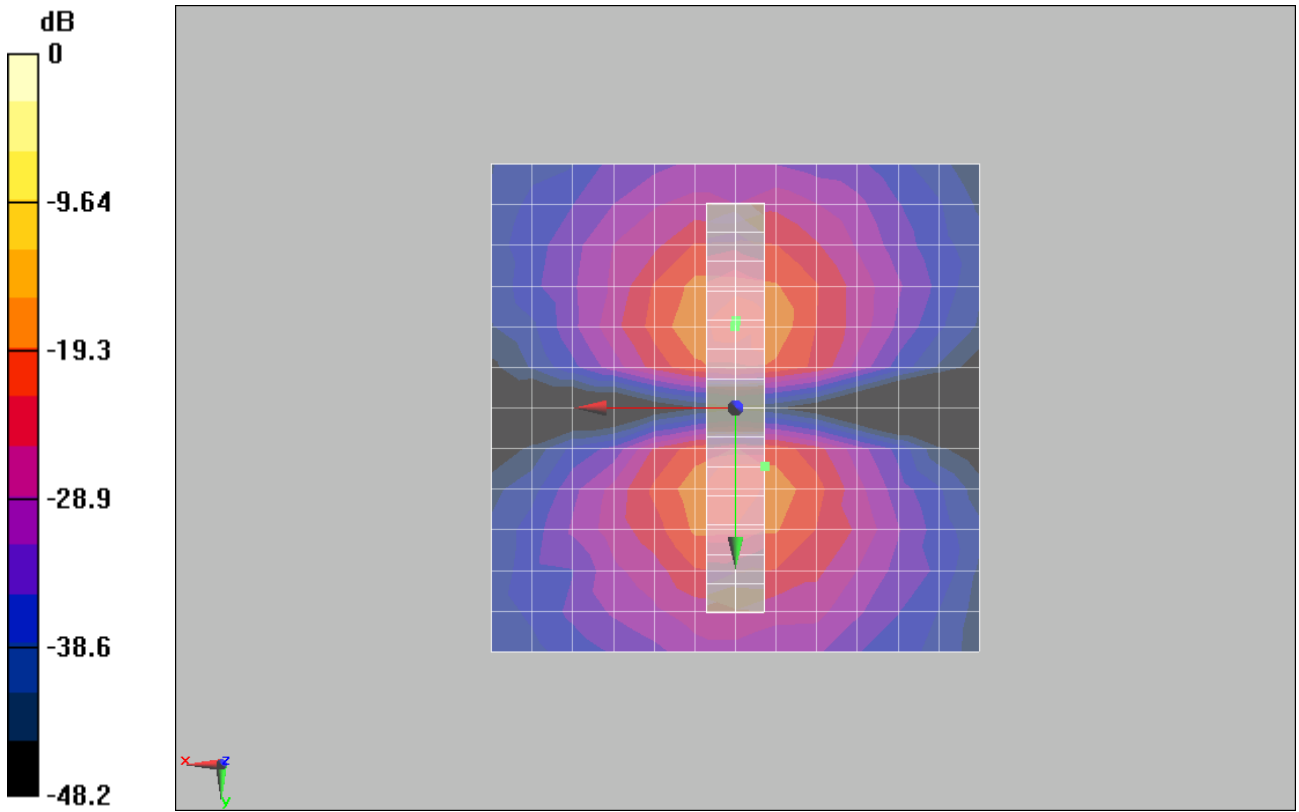
Cursor:

ABM1/ABM2 = 31.9 dB

ABM1 comp = -16.6 dB A/m

BWC Factor = 0.158027 dB

Location: -3, 6, 3.7 mm



0 dB = 1A/m

Figure 12 T-Coil CDMA Cellular Y transversal slip close

TA Technology (Shanghai) Co., Ltd.
Test Report

Report No. RZA1102-0186HAC02R1

Page 35 of 89

T-Coil CDMA Cellular Z Axial slip close

Date/Time: 3/6/2011 5:40:55 PM

Communication System: CDMA Cellular; Frequency: 836.52 MHz; Duty Cycle: 1:1

Ambient Temperature: 22.3 °C

Phantom section: TCoil Section

DASY5 Configuration:

Probe: AM1DV3 - 3082; ; Calibrated: 11/29/2010

Electronics: DAE4 Sn871; Calibrated: 11/18/2010

Phantom: HAC Test Arch with AMCC; Type: SD HAC P01 BA; Serial: Not Specified

Measurement SW: DASY5, V5.0 Build 120; SEMCAD X Version 13.4 Build 45

Scans/z (axial) 4.2mm 50 x 50/ABM Signal(x,y,z) (13x13x1):

Measurement grid: dx=10mm, dy=10mm

Signal Type: Audio File (.wav) 48k_voice_1kHz_1s.wav

Output Gain: 28.8

Measure Window Start: 0ms

Measure Window Length: 1000ms

BWC applied: 0.158027 dB

Device Reference Point: 0, 0, -6.3 mm

Category	Telephone parameters WD signal quality [(signal+noise)-to-noise ratio in decibels]
Category T1	0 dB to 10 dB
Category T2	10 dB to 20 dB
Category T3	20 dB to 30 dB
Category T4	> 30 dB

Cursor:

ABM1 comp = -8.63 dB A/m

BWC Factor = 0.158027 dB

Location: 0, 0, 3.7 mm

Scans/z (axial) fine 2mm 8 x 8/ABM Signal(x,y,z) (5x5x1):

Measurement grid: dx=10mm, dy=10mm

Signal Type: Audio File (.wav) 48k_voice_1kHz_1s.wav

Output Gain: 28.8

Measure Window Start: 0ms

Measure Window Length: 1000ms

BWC applied: 0.158027 dB

Device Reference Point: 0, 0, -6.3 mm

Category	Telephone parameters WD signal quality [(signal+noise)-to-noise ratio in decibels]
----------	---

TA Technology (Shanghai) Co., Ltd.

Test Report

Report No. RZA1102-0186HAC02R1

Page 36 of 89

Category T1	0 dB to 10 dB
Category T2	10 dB to 20 dB
Category T3	20 dB to 30 dB
Category T4	> 30 dB

Cursor:

ABM1 comp = -6.62 dB A/m

BWC Factor = 0.158027 dB

Location: 0, 0, 3.7 mm

Scans/z (axial) fine 2mm 8 x 8/ABM SNR(x,y,z) (5x5x1):

Measurement grid: dx=10mm, dy=10mm

Signal Type: Audio File (.wav) 48k_voice_1kHz_1s.wav

Output Gain: 28.8

Measure Window Start: 0ms

Measure Window Length: 1000ms

BWC applied: 0.158027 dB

Device Reference Point: 0, 0, -6.3 mm

Category	Telephone parameters WD signal quality [(signal+noise)-to-noise ratio in decibels]
Category T1	0 dB to 10 dB
Category T2	10 dB to 20 dB
Category T3	20 dB to 30 dB
Category T4	> 30 dB

Cursor:

ABM1/ABM2 = 26.4 dB

ABM1 comp = -7.34 dB A/m

BWC Factor = 0.158027 dB

Location: -2, 2, 3.7 mm

Scans/z (axial) wideband at best S/N/ABM Freq Resp(x,y,z,f) (1x1x1):

Measurement grid: dx=10mm, dy=10mm

Signal Type: Audio File (.wav) 48k_voice_300-3000_2s.wav

Output Gain: 56.4

Measure Window Start: 0ms

Measure Window Length: 2000ms

BWC applied: 10.8 dB

Device Reference Point: 0, 0, -6.3 mm

Category	Telephone parameters WD signal quality [(signal+noise)-to-noise ratio in decibels]
Category T1	0 dB to 10 dB
Category T2	10 dB to 20 dB

TA Technology (Shanghai) Co., Ltd. Test Report

Report No. RZA1102-0186HAC02R1

Page 37 of 89

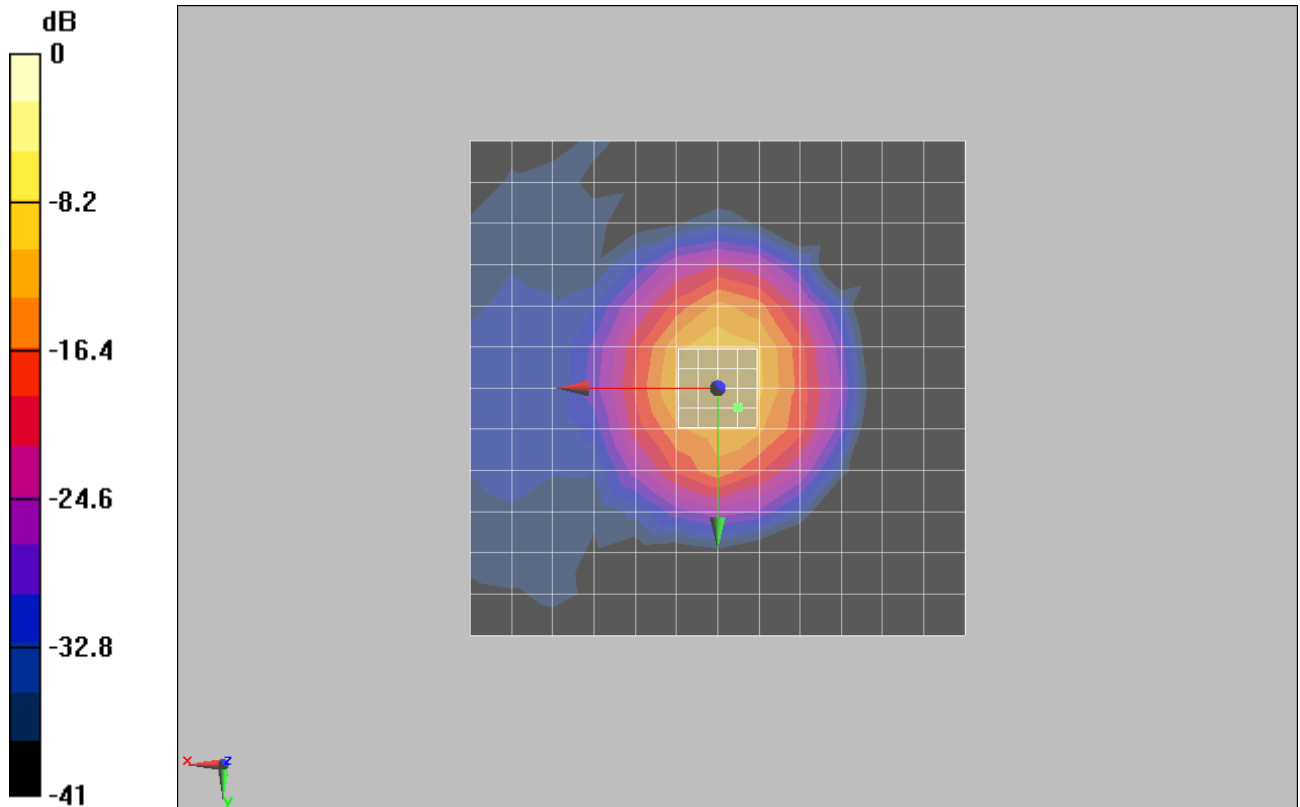
Category T3	20 dB to 30 dB
Category T4	> 30 dB

Cursor:

Diff = 1.4 dB

BWC Factor = 10.8 dB

Location: -2, 2, 3.7 mm



0 dB = 1A/m

Figure 13 T-Coil CD T-Coil CDMA Cellular X longitudinal slip close

TA Technology (Shanghai) Co., Ltd.
Test Report

Report No. RZA1102-0186HAC02R1

Page 38 of 89

T-Coil CDMA Cellular X longitudinal slip open

Date/Time: 3/6/2011 5:12:04 PM

Communication System: CDMA Cellular; Frequency: 836.52 MHz; Duty Cycle: 1:1

Ambient Temperature: 22.3 °C

Phantom section: TCoil Section

DASY5 Configuration:

Probe: AM1DV3 - 3082; ; Calibrated: 11/29/2010

Electronics: DAE4 Sn871; Calibrated: 11/18/2010

Phantom: HAC Test Arch with AMCC; Type: SD HAC P01 BA; Serial: Not Specified

Measurement SW: DASY5, V5.0 Build 120; SEMCAD X Version 13.4 Build 45

Scans/x (longitudinal) 4.2mm 50 x 50/ABM Signal(x,y,z) (13x13x1):

Measurement grid: dx=10mm, dy=10mm

Signal Type: Audio File (.wav) 48k_voice_1kHz_1s.wav

Output Gain: 28.8

Measure Window Start: 0ms

Measure Window Length: 1000ms

BWC applied: 0.158027 dB

Device Reference Point: 0, 0, -6.3 mm

Category	Telephone parameters WD signal quality [(signal+noise)-to-noise ratio in decibels]
Category T1	0 dB to 10 dB
Category T2	10 dB to 20 dB
Category T3	20 dB to 30 dB
Category T4	> 30 dB

Cursor:

ABM1 comp = -15.9 dB A/m

BWC Factor = 0.158027 dB

Location: -8.3, 0, 3.7 mm

Scans/x (longitudinal) fine 3mm 42 x 6/ABM Signal(x,y,z) (15x3x1):

Measurement grid: dx=10mm, dy=10mm

Signal Type: Audio File (.wav) 48k_voice_1kHz_1s.wav

Output Gain: 28.8

Measure Window Start: 0ms

Measure Window Length: 1000ms

BWC applied: 0.158027 dB

Device Reference Point: 0, 0, -6.3 mm

Category	Telephone parameters WD signal quality [(signal+noise)-to-noise ratio in decibels]
-----------------	---

TA Technology (Shanghai) Co., Ltd.
Test Report

Report No. RZA1102-0186HAC02R1

Page 39 of 89

Category T1	0 dB to 10 dB
Category T2	10 dB to 20 dB
Category T3	20 dB to 30 dB
Category T4	> 30 dB

Cursor:

ABM1 comp = -15.6 dB A/m

BWC Factor = 0.158027 dB

Location: -6, -1.2, 3.7 mm

Scans/x (longitudinal) fine 3mm 42 x 6/ABM SNR(x,y,z) (15x3x1):

Measurement grid: dx=10mm, dy=10mm

Signal Type: Audio File (.wav) 48k_voice_1kHz_1s.wav

Output Gain: 28.8

Measure Window Start: 0ms

Measure Window Length: 1000ms

BWC applied: 0.158027 dB

Device Reference Point: 0, 0, -6.3 mm

Category	Telephone parameters WD signal quality [(signal+noise)-to-noise ratio in decibels]
Category T1	0 dB to 10 dB
Category T2	10 dB to 20 dB
Category T3	20 dB to 30 dB
Category T4	> 30 dB

Cursor:

ABM1/ABM2 = 29.3 dB

ABM1 comp = -15.6 dB A/m

BWC Factor = 0.158027 dB

Location: -6, -1.2, 3.7 mm

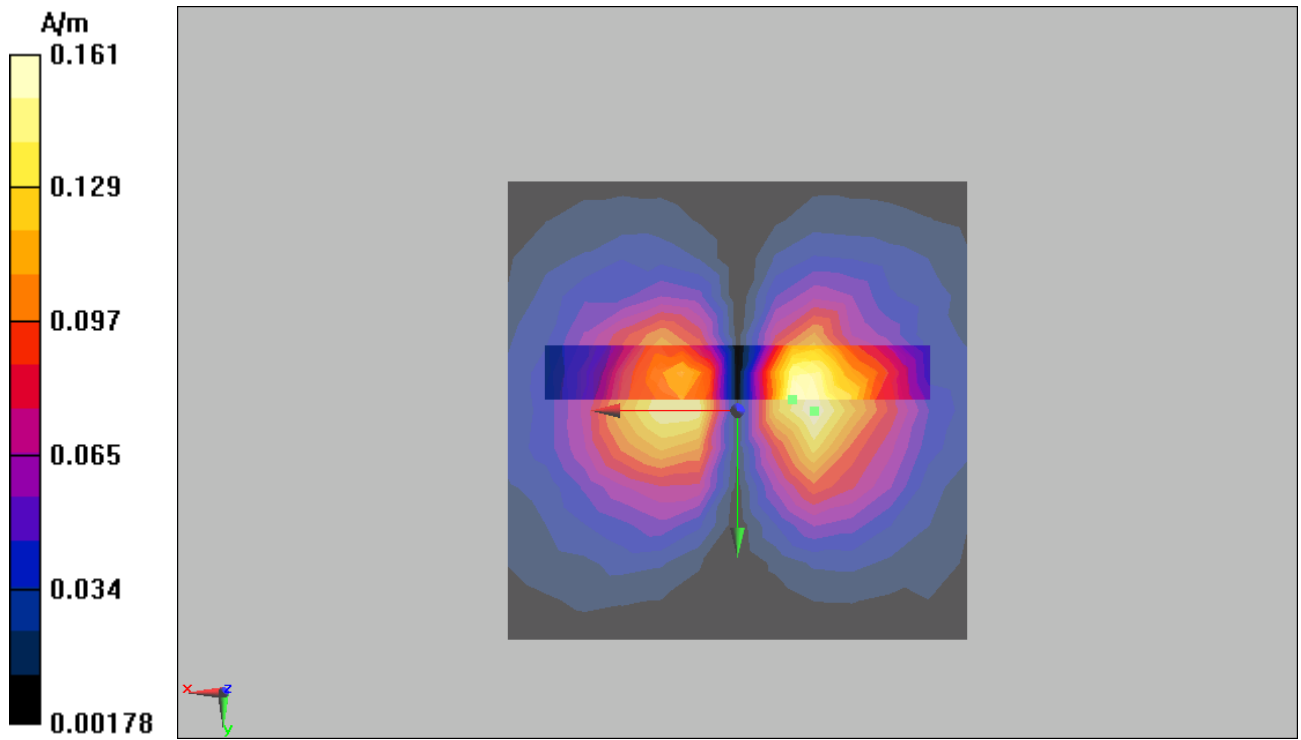


Figure 14 T-Coil CDMA Cellular X longitudinal slip open

TA Technology (Shanghai) Co., Ltd.

Test Report

Report No. RZA1102-0186HAC02R1

Page 41 of 89

T-Coil CDMA Cellular Y transversal slip open

Date/Time: 3/6/2011 5:24:19 PM

Communication System: CDMA Cellular; Frequency: 836.52 MHz; Duty Cycle: 1:1

Ambient Temperature: 22.3 °C

Phantom section: TCoil Section

DASY5 Configuration:

Probe: AM1DV3 - 3082; ; Calibrated: 11/29/2010

Electronics: DAE4 Sn871; Calibrated: 11/18/2010

Phantom: HAC Test Arch with AMCC; Type: SD HAC P01 BA; Serial: Not Specified

Measurement SW: DASY5, V5.0 Build 120; SEMCAD X Version 13.4 Build 45

Scans/y (transversal) 4.2mm 50 x 50/ABM Signal(x,y,z) (13x13x1):

Measurement grid: dx=10mm, dy=10mm

Signal Type: Audio File (.wav) 48k_voice_1kHz_1s.wav

Output Gain: 28.8

Measure Window Start: 0ms

Measure Window Length: 1000ms

BWC applied: 0.158027 dB

Device Reference Point: 0, 0, -6.3 mm

Category	Telephone parameters WD signal quality [(signal+noise)-to-noise ratio in decibels]
Category T1	0 dB to 10 dB
Category T2	10 dB to 20 dB
Category T3	20 dB to 30 dB
Category T4	> 30 dB

Cursor:

ABM1 comp = -15.8 dB A/m

BWC Factor = 0.158027 dB

Location: 0, 8.3, 3.7 mm

Scans/y (transversal) fine 3mm 6 x 42/ABM Signal(x,y,z) (3x15x1):

Measurement grid: dx=10mm, dy=10mm

Signal Type: Audio File (.wav) 48k_voice_1kHz_1s.wav

Output Gain: 28.8

Measure Window Start: 0ms

Measure Window Length: 1000ms

BWC applied: 0.158027 dB

Device Reference Point: 0, 0, -6.3 mm

Category	Telephone parameters WD signal quality [(signal+noise)-to-noise ratio in decibels]
----------	---

TA Technology (Shanghai) Co., Ltd.
Test Report

Report No. RZA1102-0186HAC02R1

Page 42 of 89

Category T1	0 dB to 10 dB
Category T2	10 dB to 20 dB
Category T3	20 dB to 30 dB
Category T4	> 30 dB

Cursor:

ABM1 comp = -15.3 dB A/m

BWC Factor = 0.158027 dB

Location: 0, 7.8, 3.7 mm

Scans/y (transversal) fine 3mm 6 x 42/ABM SNR(x,y,z) (3x15x1):

Measurement grid: dx=10mm, dy=10mm

Signal Type: Audio File (.wav) 48k_voice_1kHz_1s.wav

Output Gain: 28.8

Measure Window Start: 0ms

Measure Window Length: 1000ms

BWC applied: 0.158027 dB

Device Reference Point: 0, 0, -6.3 mm

Category	Telephone parameters WD signal quality [(signal+noise)-to-noise ratio in decibels]
Category T1	0 dB to 10 dB
Category T2	10 dB to 20 dB
Category T3	20 dB to 30 dB
Category T4	> 30 dB

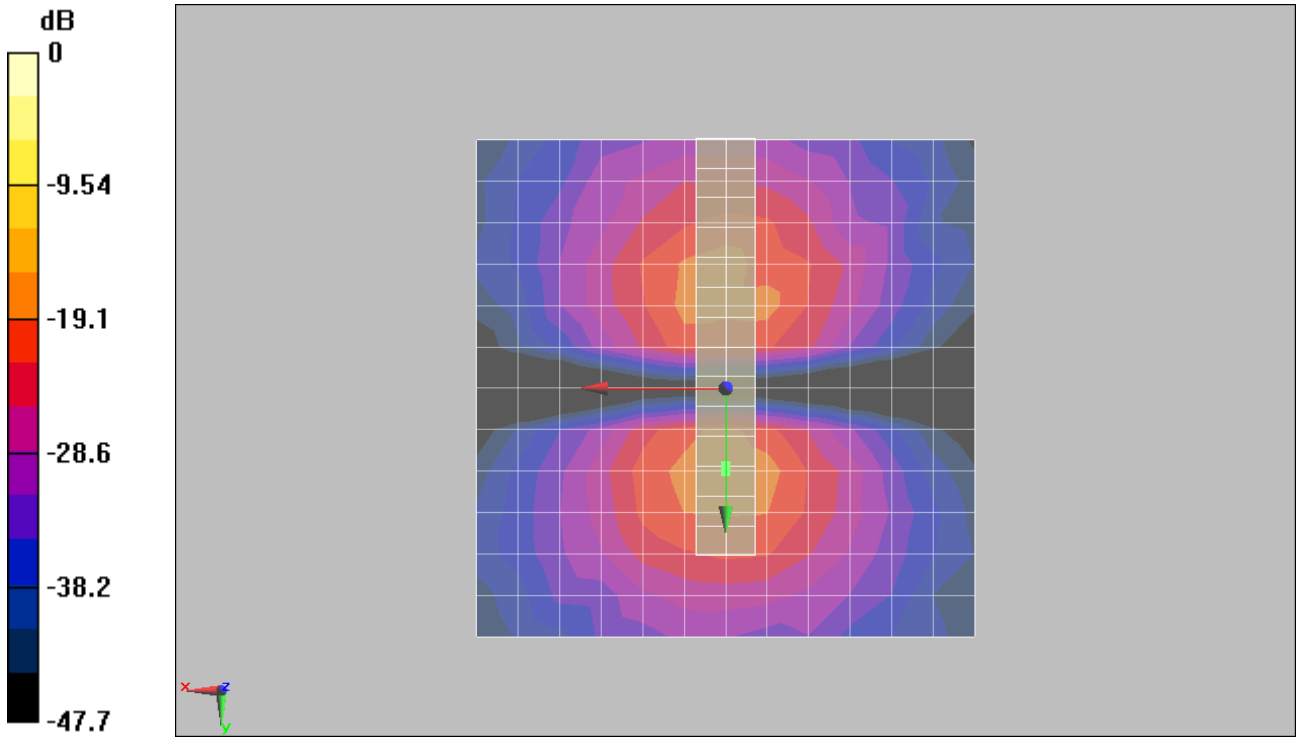
Cursor:

ABM1/ABM2 = 38.4 dB

ABM1 comp = -15.3 dB A/m

BWC Factor = 0.158027 dB

Location: 0, 7.8, 3.7 mm



0 dB = 1A/m

Figure 15 T-Coil CDMA Cellular Y transversal slip open

TA Technology (Shanghai) Co., Ltd.

Test Report

Report No. RZA1102-0186HAC02R1

Page 44 of 89

T-Coil CDMA Cellular Z Axial slip open

Date/Time: 3/6/2011 5:01:41 PM

Communication System: CDMA Cellular; Frequency: 836.52 MHz; Duty Cycle: 1:1

Ambient Temperature: 22.3 °C

Phantom section: TCoil Section

DASY5 Configuration:

Probe: AM1DV3 - 3082 ; Calibrated: 11/29/2010

Electronics: DAE4 Sn871; Calibrated: 11/18/2010

Phantom: HAC Test Arch with AMCC; Type: SD HAC P01 BA; Serial: Not Specified

Measurement SW: DASY5, V5.0 Build 120; SEMCAD X Version 13.4 Build 45

Scans/z (axial) 4.2mm 50 x 50/ABM Signal(x,y,z) (13x13x1):

Measurement grid: dx=10mm, dy=10mm

Signal Type: Audio File (.wav) 48k_voice_1kHz_1s.wav

Output Gain: 28.8

Measure Window Start: 0ms

Measure Window Length: 1000ms

BWC applied: 0.158027 dB

Device Reference Point: 0, 0, -6.3 mm

Category	Telephone parameters WD signal quality [(signal+noise)-to-noise ratio in decibels]
Category T1	0 dB to 10 dB
Category T2	10 dB to 20 dB
Category T3	20 dB to 30 dB
Category T4	> 30 dB

Cursor:

ABM1 comp = -7.7 dB A/m

BWC Factor = 0.158027 dB

Location: 0, -4.2, 3.7 mm

Scans/z (axial) fine 2mm 8 x 8/ABM Signal(x,y,z) (5x5x1):

Measurement grid: dx=10mm, dy=10mm

Signal Type: Audio File (.wav) 48k_voice_1kHz_1s.wav

Output Gain: 28.8

Measure Window Start: 0ms

Measure Window Length: 1000ms

BWC applied: 0.158027 dB

Device Reference Point: 0, 0, -6.3 mm

Category	Telephone parameters WD signal quality [(signal+noise)-to-noise ratio in decibels]
----------	---

TA Technology (Shanghai) Co., Ltd.

Test Report

Report No. RZA1102-0186HAC02R1

Page 45 of 89

Category T1	0 dB to 10 dB
Category T2	10 dB to 20 dB
Category T3	20 dB to 30 dB
Category T4	> 30 dB

Cursor:

ABM1 comp = -7.63 dB A/m

BWC Factor = 0.158027 dB

Location: 0, -0.2, 3.7 mm

Scans/z (axial) fine 2mm 8 x 8/ABM SNR(x,y,z) (5x5x1):

Measurement grid: dx=10mm, dy=10mm

Signal Type: Audio File (.wav) 48k_voice_1kHz_1s.wav

Output Gain: 28.8

Measure Window Start: 0ms

Measure Window Length: 1000ms

BWC applied: 0.158027 dB

Device Reference Point: 0, 0, -6.3 mm

Category	Telephone parameters WD signal quality [(signal+noise)-to-noise ratio in decibels]
Category T1	0 dB to 10 dB
Category T2	10 dB to 20 dB
Category T3	20 dB to 30 dB
Category T4	> 30 dB

Cursor:

ABM1/ABM2 = 38.1 dB

ABM1 comp = -8.85 dB A/m

BWC Factor = 0.158027 dB

Location: -2, -2.2, 3.7 mm

Scans/z (axial) wideband at best S/N/ABM Freq Resp(x,y,z,f) (1x1x1):

Measurement grid: dx=10mm, dy=10mm

Signal Type: Audio File (.wav) 48k_voice_300-3000_2s.wav

Output Gain: 56.4

Measure Window Start: 0ms

Measure Window Length: 2000ms

BWC applied: 10.8 dB

Device Reference Point: 0, 0, -6.3 mm

Category	Telephone parameters WD signal quality [(signal+noise)-to-noise ratio in decibels]
Category T1	0 dB to 10 dB
Category T2	10 dB to 20 dB
Category T3	20 dB to 30 dB
Category T4	> 30 dB

Cursor:

Diff = 0.954 dB

BWC Factor = 10.8 dB

Location: -2, -2.2, 3.7 mm

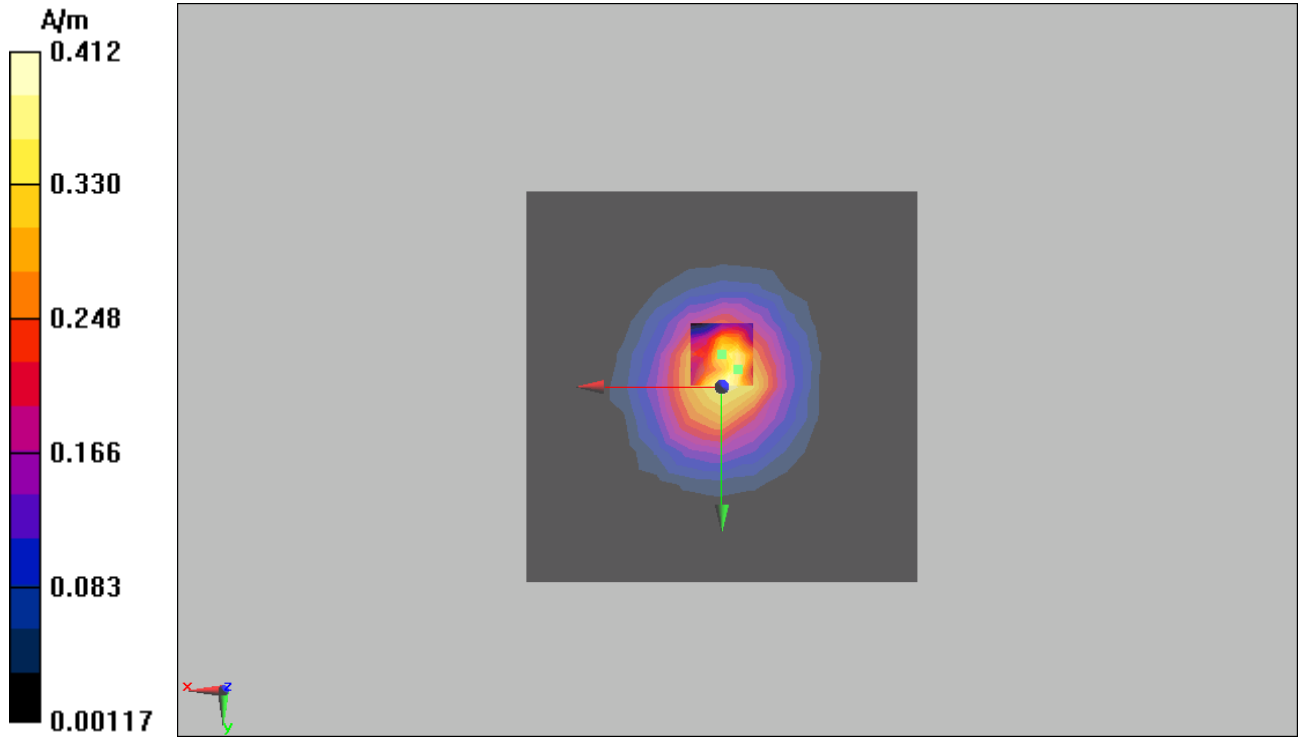


Figure 16 T-Coil CDMA Cellular Z longitudinal slip open

TA Technology (Shanghai) Co., Ltd.
Test Report

Report No. RZA1102-0186HAC02R1

Page 47 of 89

T-Coil CDMA PCS X longitudinal slip close

Date/Time: 3/6/2011 3:43:26 PM

Communication System: CDMA PCS; Frequency: 1880 MHz; Duty Cycle: 1:1

Ambient Temperature: 22.3 °C

Phantom section: TCoil Section

DASY5 Configuration:

Probe: AM1DV3 - 3082; ; Calibrated: 11/29/2010

Electronics: DAE4 Sn871; Calibrated: 11/18/2010

Phantom: HAC Test Arch with AMCC; Type: SD HAC P01 BA; Serial: Not Specified

Measurement SW: DASY5, V5.0 Build 120; SEMCAD X Version 13.4 Build 45

Scans/x (longitudinal) 4.2mm 50 x 50/ABM Signal(x,y,z) (13x13x1):

Measurement grid: dx=10mm, dy=10mm

Signal Type: Audio File (.wav) 48k_voice_1kHz_1s.wav

Output Gain: 28.8

Measure Window Start: 0ms

Measure Window Length: 1000ms

BWC applied: 0.158027 dB

Device Reference Point: 0, 0, -6.3 mm

Category	Telephone parameters WD signal quality [(signal+noise)-to-noise ratio in decibels]
Category T1	0 dB to 10 dB
Category T2	10 dB to 20 dB
Category T3	20 dB to 30 dB
Category T4	> 30 dB

Cursor:

ABM1 comp = -16.1 dB A/m

BWC Factor = 0.158027 dB

Location: 8.3, 0, 3.7 mm

Scans/x (longitudinal) fine 3mm 42 x 6/ABM Signal(x,y,z) (15x3x1):

Measurement grid: dx=10mm, dy=10mm

Signal Type: Audio File (.wav) 48k_voice_1kHz_1s.wav

Output Gain: 28.8

Measure Window Start: 0ms

Measure Window Length: 1000ms

BWC applied: 0.158027 dB

Device Reference Point: 0, 0, -6.3 mm

Category	Telephone parameters WD signal quality [(signal+noise)-to-noise ratio in decibels]
----------	---

TA Technology (Shanghai) Co., Ltd.
Test Report

Report No. RZA1102-0186HAC02R1

Page 48 of 89

Category T1	0 dB to 10 dB
Category T2	10 dB to 20 dB
Category T3	20 dB to 30 dB
Category T4	> 30 dB

Cursor:

ABM1 comp = -15.9 dB A/m

BWC Factor = 0.158027 dB

Location: 6, 0, 3.7 mm

Scans/x (longitudinal) fine 3mm 42 x 6/ABM SNR(x,y,z) (15x3x1):

Measurement grid: dx=10mm, dy=10mm

Signal Type: Audio File (.wav) 48k_voice_1kHz_1s.wav

Output Gain: 28.8

Measure Window Start: 0ms

Measure Window Length: 1000ms

BWC applied: 0.158027 dB

Device Reference Point: 0, 0, -6.3 mm

Category	Telephone parameters WD signal quality [(signal+noise)-to-noise ratio in decibels]
Category T1	0 dB to 10 dB
Category T2	10 dB to 20 dB
Category T3	20 dB to 30 dB
Category T4	> 30 dB

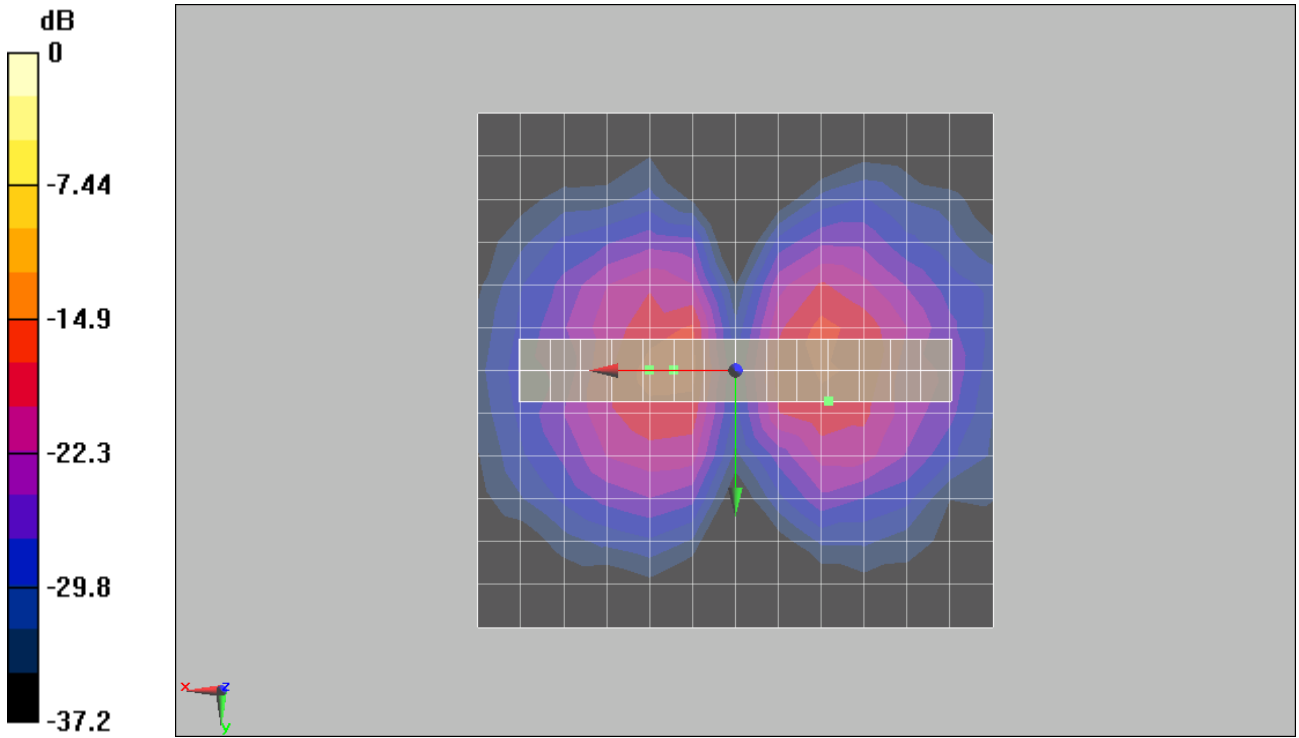
Cursor:

ABM1/ABM2 = 24.9 dB

ABM1 comp = -16.5 dB A/m

BWC Factor = 0.158027 dB

Location: -9, 3, 3.7 mm



0 dB = 1A/m

Figure 17 T-Coil CDMA PCS X longitudinal slip close

TA Technology (Shanghai) Co., Ltd.

Test Report

Report No. RZA1102-0186HAC02R1

Page 50 of 89

T-Coil CDMA PCS Y transversal slip close

Date/Time: 3/6/2011 3:55:20 PM

Communication System: CDMA PCS; Frequency: 1880 MHz; Duty Cycle: 1:1

Ambient Temperature: 22.3 °C

Phantom section: TCoil Section

DASY5 Configuration:

Probe: AM1DV3 - 3082; ; Calibrated: 11/29/2010

Electronics: DAE4 Sn871; Calibrated: 11/18/2010

Phantom: HAC Test Arch with AMCC; Type: SD HAC P01 BA; Serial: Not Specified

Measurement SW: DASY5, V5.0 Build 120; SEMCAD X Version 13.4 Build 45

Scans/y (transversal) 4.2mm 50 x 50/ABM Signal(x,y,z) (13x13x1):

Measurement grid: dx=10mm, dy=10mm

Signal Type: Audio File (.wav) 48k_voice_1kHz_1s.wav

Output Gain: 28.8

Measure Window Start: 0ms

Measure Window Length: 1000ms

BWC applied: 0.158027 dB

Device Reference Point: 0, 0, -6.3 mm

Category	Telephone parameters WD signal quality [(signal+noise)-to-noise ratio in decibels]
Category T1	0 dB to 10 dB
Category T2	10 dB to 20 dB
Category T3	20 dB to 30 dB
Category T4	> 30 dB

Cursor:

ABM1 comp = -15.7 dB A/m

BWC Factor = 0.158027 dB

Location: 0, -8.3, 3.7 mm

Scans/y (transversal) fine 3mm 6 x 42/ABM Signal(x,y,z) (3x15x1):

Measurement grid: dx=10mm, dy=10mm

Signal Type: Audio File (.wav) 48k_voice_1kHz_1s.wav

Output Gain: 28.8

Measure Window Start: 0ms

Measure Window Length: 1000ms

BWC applied: 0.158027 dB

Device Reference Point: 0, 0, -6.3 mm

Category	Telephone parameters WD signal quality [(signal+noise)-to-noise ratio in decibels]
----------	---

TA Technology (Shanghai) Co., Ltd.
Test Report

Report No. RZA1102-0186HAC02R1

Page 51 of 89

Category T1	0 dB to 10 dB
Category T2	10 dB to 20 dB
Category T3	20 dB to 30 dB
Category T4	> 30 dB

Cursor:

ABM1 comp = -15.4 dB A/m

BWC Factor = 0.158027 dB

Location: 0, 9, 3.7 mm

Scans/y (transversal) fine 3mm 6 x 42/ABM SNR(x,y,z) (3x15x1):

Measurement grid: dx=10mm, dy=10mm

Signal Type: Audio File (.wav) 48k_voice_1kHz_1s.wav

Output Gain: 28.8

Measure Window Start: 0ms

Measure Window Length: 1000ms

BWC applied: 0.158027 dB

Device Reference Point: 0, 0, -6.3 mm

Category	Telephone parameters WD signal quality [(signal+noise)-to-noise ratio in decibels]
Category T1	0 dB to 10 dB
Category T2	10 dB to 20 dB
Category T3	20 dB to 30 dB
Category T4	> 30 dB

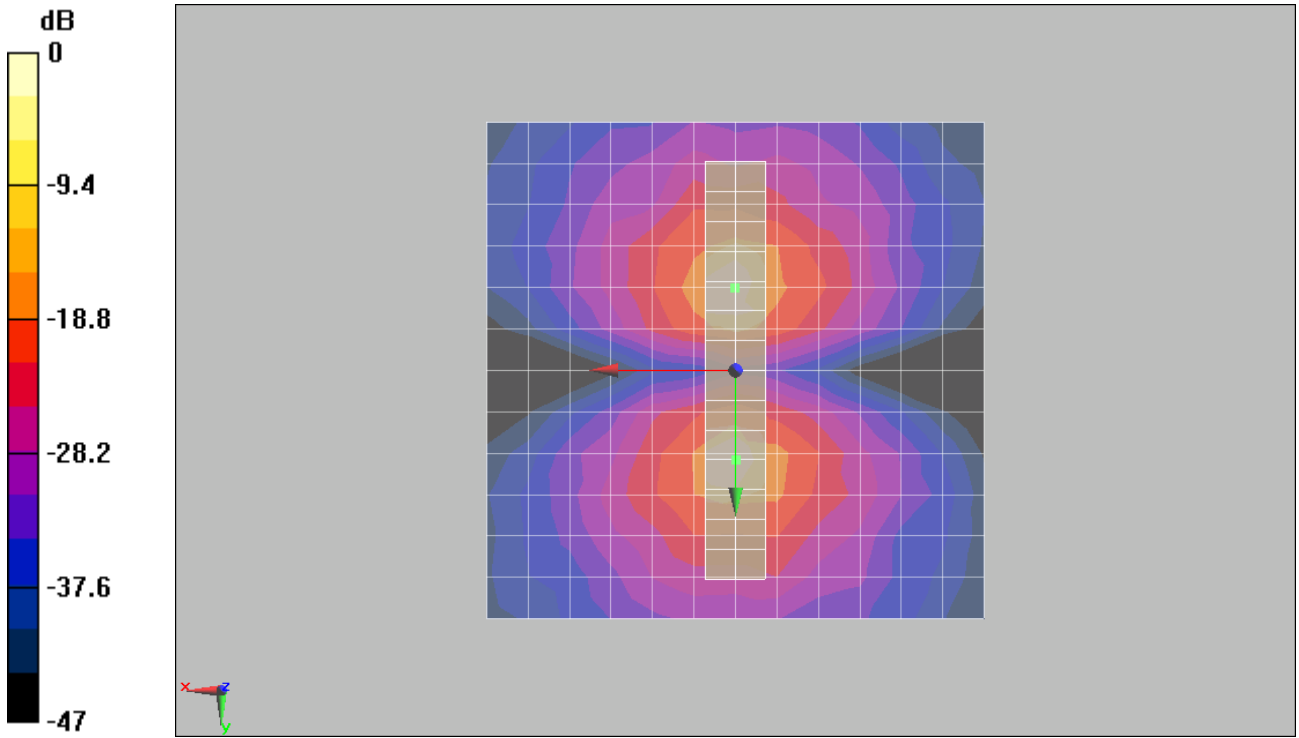
Cursor:

ABM1/ABM2 = 33.2 dB

ABM1 comp = -15.4 dB A/m

BWC Factor = 0.158027 dB

Location: 0, 9, 3.7 mm



0 dB = 1A/m

Figure 18 T-Coil CDMA PCS Y transversal slip close

TA Technology (Shanghai) Co., Ltd.
Test Report

Report No. RZA1102-0186HAC02R1

Page 53 of 89

T-Coil CDMA PCS Z Axial slip close

Date/Time: 3/6/2011 3:30:33 PM

Communication System: CDMA PCS; Frequency: 1880 MHz; Duty Cycle: 1:1

Ambient Temperature: 22.3 °C

Phantom section: TCoil Section

DASY5 Configuration:

Probe: AM1DV3 - 3082; ; Calibrated: 11/29/2010

Electronics: DAE4 Sn871; Calibrated: 11/18/2010

Phantom: HAC Test Arch with AMCC; Type: SD HAC P01 BA; Serial: Not Specified

Measurement SW: DASY5, V5.0 Build 120; SEMCAD X Version 13.4 Build 45

Scans/z (axial) 4.2mm 50 x 50/ABM Signal(x,y,z) (13x13x1):

Measurement grid: dx=10mm, dy=10mm

Signal Type: Audio File (.wav) 48k_voice_1kHz_1s.wav

Output Gain: 28.8

Measure Window Start: 0ms

Measure Window Length: 1000ms

BWC applied: 0.158027 dB

Device Reference Point: 0, 0, -6.3 mm

Category	Telephone parameters WD signal quality [(signal+noise)-to-noise ratio in decibels]
Category T1	0 dB to 10 dB
Category T2	10 dB to 20 dB
Category T3	20 dB to 30 dB
Category T4	> 30 dB

Cursor:

ABM1 comp = -7.02 dB A/m

BWC Factor = 0.158027 dB

Location: 0, 0, 3.7 mm

Scans/z (axial) fine 2mm 8 x 8/ABM Signal(x,y,z) (5x5x1):

Measurement grid: dx=10mm, dy=10mm

Signal Type: Audio File (.wav) 48k_voice_1kHz_1s.wav

Output Gain: 28.8

Measure Window Start: 0ms

Measure Window Length: 1000ms

BWC applied: 0.158027 dB

Device Reference Point: 0, 0, -6.3 mm

Category	Telephone parameters WD signal quality [(signal+noise)-to-noise ratio in decibels]
-----------------	---

TA Technology (Shanghai) Co., Ltd.
Test Report

Report No. RZA1102-0186HAC02R1

Page 54 of 89

Category T1	0 dB to 10 dB
Category T2	10 dB to 20 dB
Category T3	20 dB to 30 dB
Category T4	> 30 dB

Cursor:

ABM1 comp = -6.87 dB A/m

BWC Factor = 0.158027 dB

Location: 0, -2, 3.7 mm

Scans/z (axial) fine 2mm 8 x 8/ABM SNR(x,y,z) (5x5x1):

Measurement grid: dx=10mm, dy=10mm

Signal Type: Audio File (.wav) 48k_voice_1kHz_1s.wav

Output Gain: 28.8

Measure Window Start: 0ms

Measure Window Length: 1000ms

BWC applied: 0.158027 dB

Device Reference Point: 0, 0, -6.3 mm

Category	Telephone parameters WD signal quality [(signal+noise)-to-noise ratio in decibels]
Category T1	0 dB to 10 dB
Category T2	10 dB to 20 dB
Category T3	20 dB to 30 dB
Category T4	> 30 dB

Cursor:

ABM1/ABM2 = 34 dB

ABM1 comp = -7.02 dB A/m

BWC Factor = 0.158027 dB

Location: -2, -2, 3.7 mm

Scans/z (axial) wideband at best S/N/ABM Freq Resp(x,y,z,f) (1x1x1):

Measurement grid: dx=10mm, dy=10mm

Signal Type: Audio File (.wav) 48k_voice_300-3000_2s.wav

Output Gain: 56.4

Measure Window Start: 0ms

Measure Window Length: 2000ms

BWC applied: 10.8 dB

Device Reference Point: 0, 0, -6.3 mm

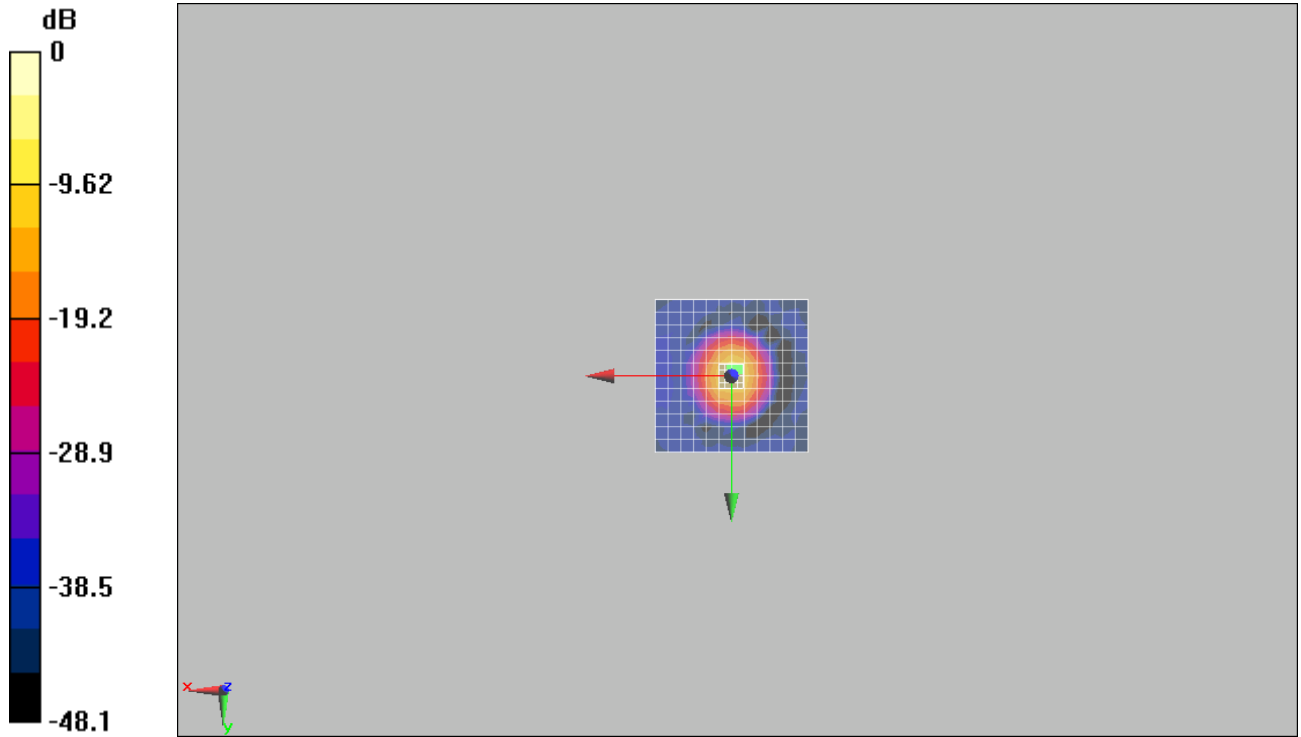
Category	Telephone parameters WD signal quality [(signal+noise)-to-noise ratio in decibels]
Category T1	0 dB to 10 dB
Category T2	10 dB to 20 dB
Category T3	20 dB to 30 dB
Category T4	> 30 dB

Cursor:

Diff = 1.23 dB

BWC Factor = 10.8 dB

Location: -2, -2, 3.7 mm



0 dB = 1A/m

Figure 19 T-Coil CDMA PCS Z Axial slip close

TA Technology (Shanghai) Co., Ltd.

Test Report

Report No. RZA1102-0186HAC02R1

Page 56 of 89

T-Coil CDMA PCS X longitudinal slip Open

Date/Time: 3/6/2011 4:29:08 PM

Communication System: CDMA PCS; Frequency: 1880 MHz; Duty Cycle: 1:1

Ambient Temperature: 22.3 °C

Phantom section: TCoil Section

DASY5 Configuration:

Probe: AM1DV3 - 3082; ; Calibrated: 11/29/2010

Electronics: DAE4 Sn871; Calibrated: 11/18/2010

Phantom: HAC Test Arch with AMCC; Type: SD HAC P01 BA; Serial: Not Specified

Measurement SW: DASY5, V5.0 Build 120; SEMCAD X Version 13.4 Build 45

Scans/x (longitudinal) 4.2mm 50 x 50/ABM Signal(x,y,z) (13x13x1):

Measurement grid: dx=10mm, dy=10mm

Signal Type: Audio File (.wav) 48k_voice_1kHz_1s.wav

Output Gain: 28.8

Measure Window Start: 0ms

Measure Window Length: 1000ms

BWC applied: 0.158027 dB

Device Reference Point: 0, 0, -6.3 mm

Category	Telephone parameters WD signal quality [(signal+noise)-to-noise ratio in decibels]
Category T1	0 dB to 10 dB
Category T2	10 dB to 20 dB
Category T3	20 dB to 30 dB
Category T4	> 30 dB

Cursor:

ABM1 comp = -16.6 dB A/m

BWC Factor = 0.158027 dB

Location: -8.3, -4.2, 3.7 mm

Scans/x (longitudinal) fine 3mm 42 x 6/ABM Signal(x,y,z) (15x3x1):

Measurement grid: dx=10mm, dy=10mm

Signal Type: Audio File (.wav) 48k_voice_1kHz_1s.wav

Output Gain: 28.8

Measure Window Start: 0ms

Measure Window Length: 1000ms

BWC applied: 0.158027 dB

Device Reference Point: 0, 0, -6.3 mm

Category	Telephone parameters WD signal quality [(signal+noise)-to-noise ratio in decibels]
----------	---

TA Technology (Shanghai) Co., Ltd.
Test Report

Report No. RZA1102-0186HAC02R1

Page 57 of 89

Category T1	0 dB to 10 dB
Category T2	10 dB to 20 dB
Category T3	20 dB to 30 dB
Category T4	> 30 dB

Cursor:

ABM1 comp = -16 dB A/m

BWC Factor = 0.158027 dB

Location: 6, 0, 3.7 mm

Scans/x (longitudinal) fine 3mm 42 x 6/ABM SNR(x,y,z) (15x3x1):

Measurement grid: dx=10mm, dy=10mm

Signal Type: Audio File (.wav) 48k_voice_1kHz_1s.wav

Output Gain: 28.8

Measure Window Start: 0ms

Measure Window Length: 1000ms

BWC applied: 0.158027 dB

Device Reference Point: 0, 0, -6.3 mm

Category	Telephone parameters WD signal quality [(signal+noise)-to-noise ratio in decibels]
Category T1	0 dB to 10 dB
Category T2	10 dB to 20 dB
Category T3	20 dB to 30 dB
Category T4	> 30 dB

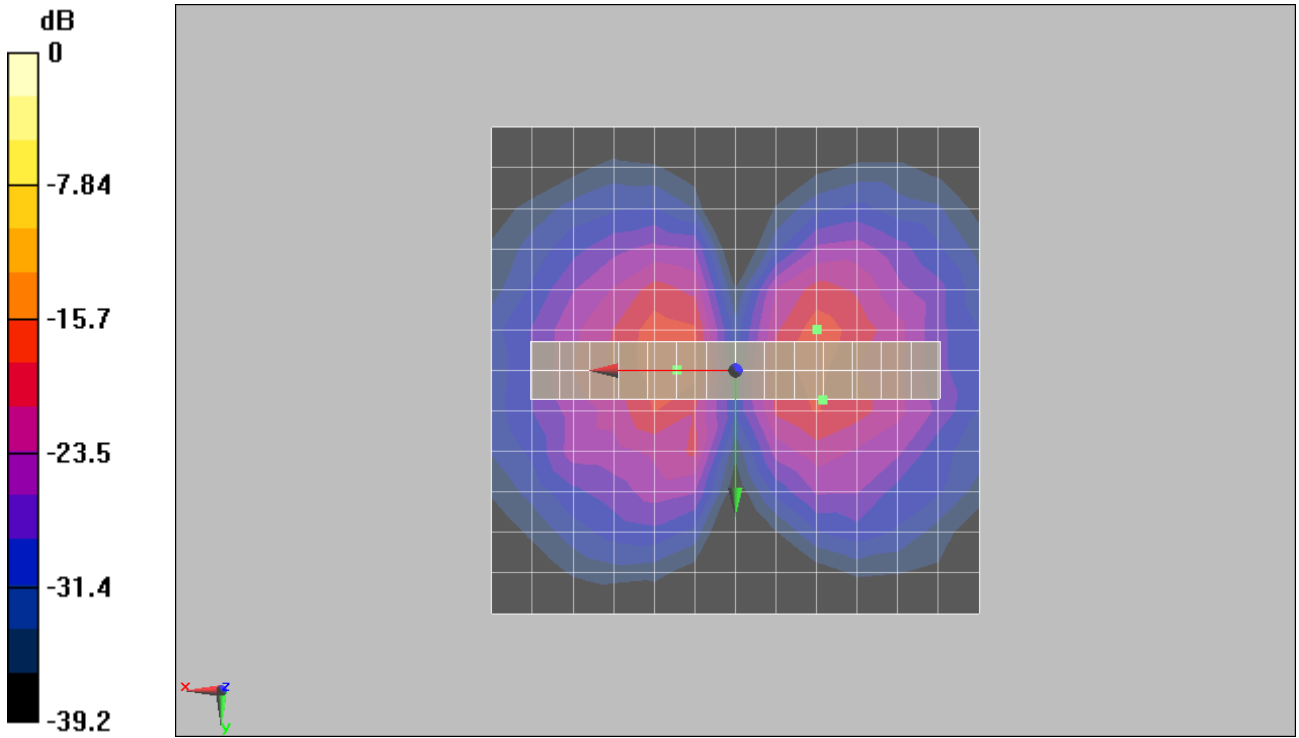
Cursor:

ABM1/ABM2 = 33.8 dB

ABM1 comp = -16 dB A/m

BWC Factor = 0.158027 dB

Location: -9, 3, 3.7 mm



0 dB = 1A/m

Figure 20 T-Coil CDMA PCS X longitudinal slip Open

TA Technology (Shanghai) Co., Ltd.
Test Report

Report No. RZA1102-0186HAC02R1

Page 59 of 89

T-Coil CDMA PCS Y transversal slip Open

Date/Time: 3/6/2011 4:40:47 PM

Communication System: CDMA PCS; Frequency: 1880 MHz; Duty Cycle: 1:1

Medium parameters used: $\sigma = 0$ mho/m, $\epsilon_r = 1$; $\rho = 1$ kg/m³

Ambient Temperature: 22.3 °C

Phantom section: TCoil Section

DASY5 Configuration:

Probe: AM1DV3 - 3082; ; Calibrated: 11/29/2010

Electronics: DAE4 Sn871; Calibrated: 11/18/2010

Phantom: HAC Test Arch with AMCC; Type: SD HAC P01 BA; Serial: Not Specified

Measurement SW: DASY5, V5.0 Build 120; SEMCAD X Version 13.4 Build 45

Scans/y (transversal) 4.2mm 50 x 50/ABM Signal(x,y,z) (13x13x1):

Measurement grid: dx=10mm, dy=10mm

Signal Type: Audio File (.wav) 48k_voice_1kHz_1s.wav

Output Gain: 28.8

Measure Window Start: 0ms

Measure Window Length: 1000ms

BWC applied: 0.158027 dB

Device Reference Point: 0, 0, -6.3 mm

Category	Telephone parameters WD signal quality [(signal+noise)-to-noise ratio in decibels]
Category T1	0 dB to 10 dB
Category T2	10 dB to 20 dB
Category T3	20 dB to 30 dB
Category T4	> 30 dB

Cursor:

ABM1 comp = -16.8 dB A/m

BWC Factor = 0.158027 dB

Location: 0, -8.3, 3.7 mm

Scans/y (transversal) fine 3mm 6 x 42/ABM Signal(x,y,z) (3x15x1):

Measurement grid: dx=10mm, dy=10mm

Signal Type: Audio File (.wav) 48k_voice_1kHz_1s.wav

Output Gain: 28.8

Measure Window Start: 0ms

Measure Window Length: 1000ms

BWC applied: 0.158027 dB

Device Reference Point: 0, 0, -6.3 mm

Category	Telephone parameters WD signal quality
-----------------	---

TA Technology (Shanghai) Co., Ltd.
Test Report

Report No. RZA1102-0186HAC02R1

Page 60 of 89

[(signal+noise)-to-noise ratio in decibels]

Category T1	0 dB to 10 dB
Category T2	10 dB to 20 dB
Category T3	20 dB to 30 dB
Category T4	> 30 dB

Cursor:

ABM1 comp = -15.4 dB A/m

BWC Factor = 0.158027 dB

Location: 0, -6, 3.7 mm

Scans/y (transversal) fine 3mm 6 x 42/ABM SNR(x,y,z) (3x15x1):

Measurement grid: dx=10mm, dy=10mm

Signal Type: Audio File (.wav) 48k_voice_1kHz_1s.wav

Output Gain: 28.8

Measure Window Start: 0ms

Measure Window Length: 1000ms

BWC applied: 0.158027 dB

Device Reference Point: 0, 0, -6.3 mm

Category	Telephone parameters WD signal quality [(signal+noise)-to-noise ratio in decibels]
Category T1	0 dB to 10 dB
Category T2	10 dB to 20 dB
Category T3	20 dB to 30 dB
Category T4	> 30 dB

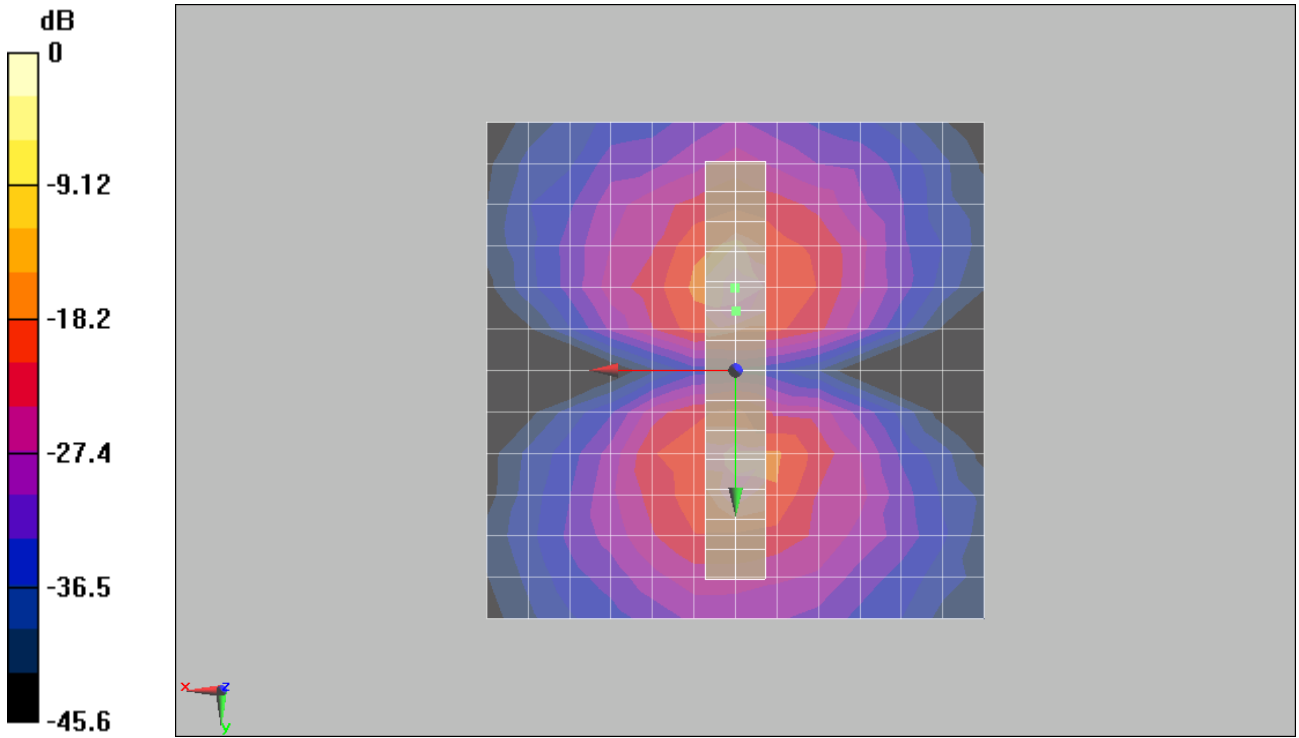
Cursor:

ABM1/ABM2 = 39.5 dB

ABM1 comp = -15.4 dB A/m

BWC Factor = 0.158027 dB

Location: 0, -6, 3.7 mm



0 dB = 1A/m

Figure 21 T-Coil CDMA PCS Y transversal slip Open

TA Technology (Shanghai) Co., Ltd.

Test Report

Report No. RZA1102-0186HAC02R1

Page 62 of 89

T-Coil CDMA PCS Z Axial slip Open

Date/Time: 3/6/2011 4:18:45 PM

Communication System: CDMA PCS; Frequency: 1880 MHz; Duty Cycle: 1:1

Ambient Temperature: 22.3 °C

Phantom section: TCoil Section

DASY5 Configuration:

Probe: AM1DV3 - 3082; ; Calibrated: 11/29/2010

Electronics: DAE4 Sn871; Calibrated: 11/18/2010

Phantom: HAC Test Arch with AMCC; Type: SD HAC P01 BA; Serial: Not Specified

Measurement SW: DASY5, V5.0 Build 120; SEMCAD X Version 13.4 Build 45

Scans/z (axial) 4.2mm 50 x 50/ABM Signal(x,y,z) (13x13x1):

Measurement grid: dx=10mm, dy=10mm

Signal Type: Audio File (.wav) 48k_voice_1kHz_1s.wav

Output Gain: 28.8

Measure Window Start: 0ms

Measure Window Length: 1000ms

BWC applied: 0.158027 dB

Device Reference Point: 0, 0, -6.3 mm

Category	Telephone parameters WD signal quality [(signal+noise)-to-noise ratio in decibels]
Category T1	0 dB to 10 dB
Category T2	10 dB to 20 dB
Category T3	20 dB to 30 dB
Category T4	> 30 dB

Cursor:

ABM1 comp = -7.61 dB A/m

BWC Factor = 0.158027 dB

Location: 0, 0, 3.7 mm

Scans/z (axial) fine 2mm 8 x 8/ABM Signal(x,y,z) (5x5x1):

Measurement grid: dx=10mm, dy=10mm

Signal Type: Audio File (.wav) 48k_voice_1kHz_1s.wav

Output Gain: 28.8

Measure Window Start: 0ms

Measure Window Length: 1000ms

BWC applied: 0.158027 dB

Device Reference Point: 0, 0, -6.3 mm

Category	Telephone parameters WD signal quality [(signal+noise)-to-noise ratio in decibels]
----------	---

TA Technology (Shanghai) Co., Ltd. Test Report

Report No. RZA1102-0186HAC02R1

Page 63 of 89

Category T1	0 dB to 10 dB
Category T2	10 dB to 20 dB
Category T3	20 dB to 30 dB
Category T4	> 30 dB

Cursor:

ABM1 comp = -7.07 dB A/m

BWC Factor = 0.158027 dB

Location: 0, -2, 3.7 mm

Scans/z (axial) fine 2mm 8 x 8/ABM SNR(x,y,z) (5x5x1):

Measurement grid: dx=10mm, dy=10mm

Signal Type: Audio File (.wav) 48k_voice_1kHz_1s.wav

Output Gain: 28.8

Measure Window Start: 0ms

Measure Window Length: 1000ms

BWC applied: 0.158027 dB

Device Reference Point: 0, 0, -6.3 mm

Category	Telephone parameters WD signal quality [(signal+noise)-to-noise ratio in decibels]
Category T1	0 dB to 10 dB
Category T2	10 dB to 20 dB
Category T3	20 dB to 30 dB
Category T4	> 30 dB

Cursor:

ABM1/ABM2 = 43.7 dB

ABM1 comp = -8.15 dB A/m

BWC Factor = 0.158027 dB

Location: -2, 2, 3.7 mm

Scans/z (axial) wideband at best S/N/ABM Freq Resp(x,y,z,f) (1x1x1):

Measurement grid: dx=10mm, dy=10mm

Signal Type: Audio File (.wav) 48k_voice_300-3000_2s.wav

Output Gain: 56.4

Measure Window Start: 0ms

Measure Window Length: 2000ms

BWC applied: 10.8 dB

Device Reference Point: 0, 0, -6.3 mm

Category	Telephone parameters WD signal quality [(signal+noise)-to-noise ratio in decibels]
Category T1	0 dB to 10 dB
Category T2	10 dB to 20 dB

TA Technology (Shanghai) Co., Ltd. Test Report

Report No. RZA1102-0186HAC02R1

Page 64 of 89

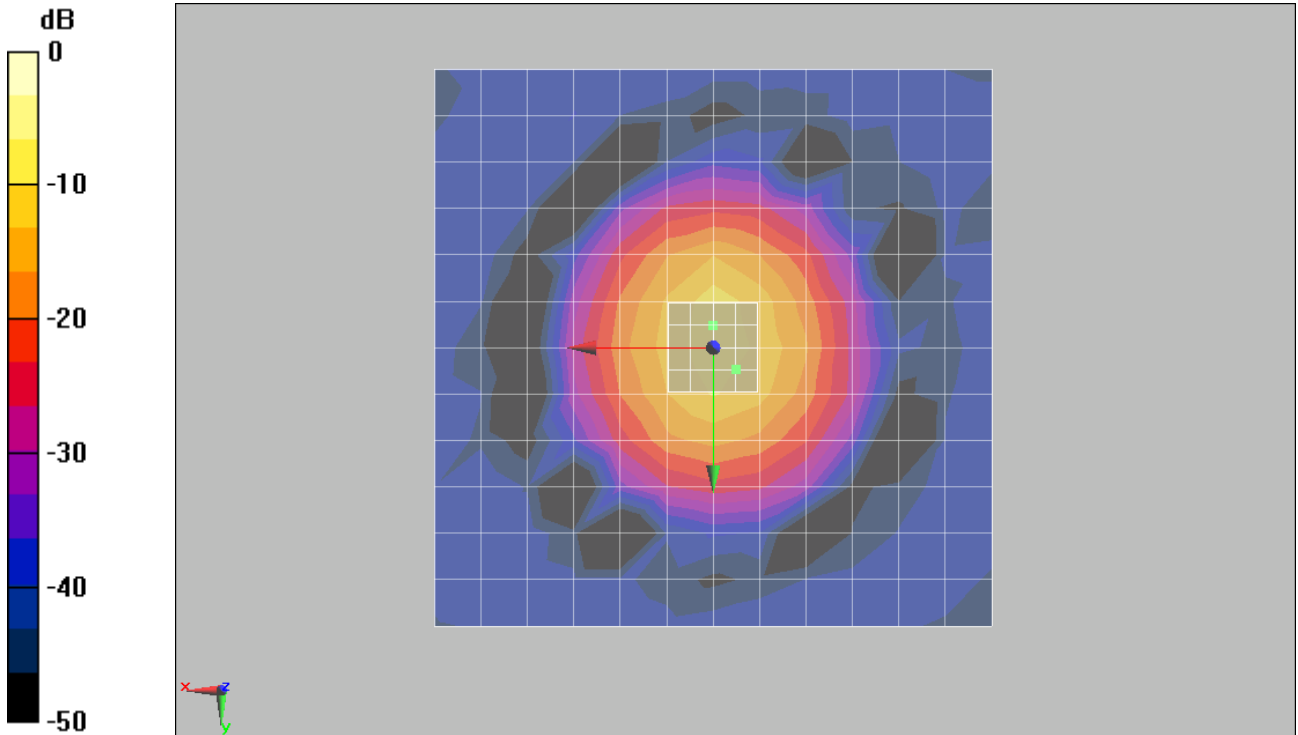
Category T3	20 dB to 30 dB
Category T4	> 30 dB

Cursor:

Diff = 2 dB

BWC Factor = 10.8 dB

Location: -2, 2, 3.7 mm



0 dB = 1A/m

Figure 22 T-Coil CDMA PCS Z Axial slip Open

TA Technology (Shanghai) Co., Ltd.

Test Report

Report No. RZA1102-0186HAC02R1

Page 65 of 89

T-Coil CDMA AWS X longitudinal slip close

Date/Time: 3/6/2011 8:01:47 PM

Communication System: CDMA AWS; Frequency: 1732.5 MHz; Duty Cycle: 1:1

Ambient Temperature: 22.3 °C

Phantom section: TCoil Section

DASY5 Configuration:

Probe: AM1DV3 - 3082; ; Calibrated: 11/29/2010

Electronics: DAE4 Sn871; Calibrated: 11/18/2010

Phantom: HAC Test Arch with AMCC; Type: SD HAC P01 BA; Serial: Not Specified

Measurement SW: DASY5, V5.0 Build 120; SEMCAD X Version 13.4 Build 45

Scans/x (longitudinal) 4.2mm 50 x 50/ABM Signal(x,y,z) (13x13x1):

Measurement grid: dx=10mm, dy=10mm

Signal Type: Audio File (.wav) 48k_voice_1kHz_1s.wav

Output Gain: 28.8

Measure Window Start: 0ms

Measure Window Length: 1000ms

BWC applied: 0.158027 dB

Device Reference Point: 0, 0, -6.3 mm

Category	Telephone parameters WD signal quality [(signal+noise)-to-noise ratio in decibels]
Category T1	0 dB to 10 dB
Category T2	10 dB to 20 dB
Category T3	20 dB to 30 dB
Category T4	> 30 dB

Cursor:

ABM1 comp = -15.2 dB A/m

BWC Factor = 0.158027 dB

Location: 4.2, 0, 3.7 mm

Scans/x (longitudinal) fine 3mm 42 x 6/ABM Signal(x,y,z) (15x3x1):

Measurement grid: dx=10mm, dy=10mm

Signal Type: Audio File (.wav) 48k_voice_1kHz_1s.wav

Output Gain: 28.8

Measure Window Start: 0ms

Measure Window Length: 1000ms

BWC applied: 0.158027 dB

Device Reference Point: 0, 0, -6.3 mm

Category	Telephone parameters WD signal quality [(signal+noise)-to-noise ratio in decibels]
Category T1	0 dB to 10 dB

TA Technology (Shanghai) Co., Ltd. Test Report

Report No. RZA1102-0186HAC02R1

Page 66 of 89

Category T2	10 dB to 20 dB
Category T3	20 dB to 30 dB
Category T4	> 30 dB

Cursor:

ABM1 comp = -15 dB A/m

BWC Factor = 0.158027 dB

Location: -7.2, 0, 3.7 mm

Scans/x (longitudinal) fine 3mm 42 x 6/ABM SNR(x,y,z) (15x3x1):

Measurement grid: dx=10mm, dy=10mm

Signal Type: Audio File (.wav) 48k_voice_1kHz_1s.wav

Output Gain: 28.8

Measure Window Start: 0ms

Measure Window Length: 1000ms

BWC applied: 0.158027 dB

Device Reference Point: 0, 0, -6.3 mm

Category	Telephone parameters WD signal quality [(signal+noise)-to-noise ratio in decibels]
Category T1	0 dB to 10 dB
Category T2	10 dB to 20 dB
Category T3	20 dB to 30 dB
Category T4	> 30 dB

Cursor:

ABM1/ABM2 = 20.5 dB

ABM1 comp = -17.1 dB A/m

BWC Factor = 0.158027 dB

Location: -7.2, 3, 3.7 mm

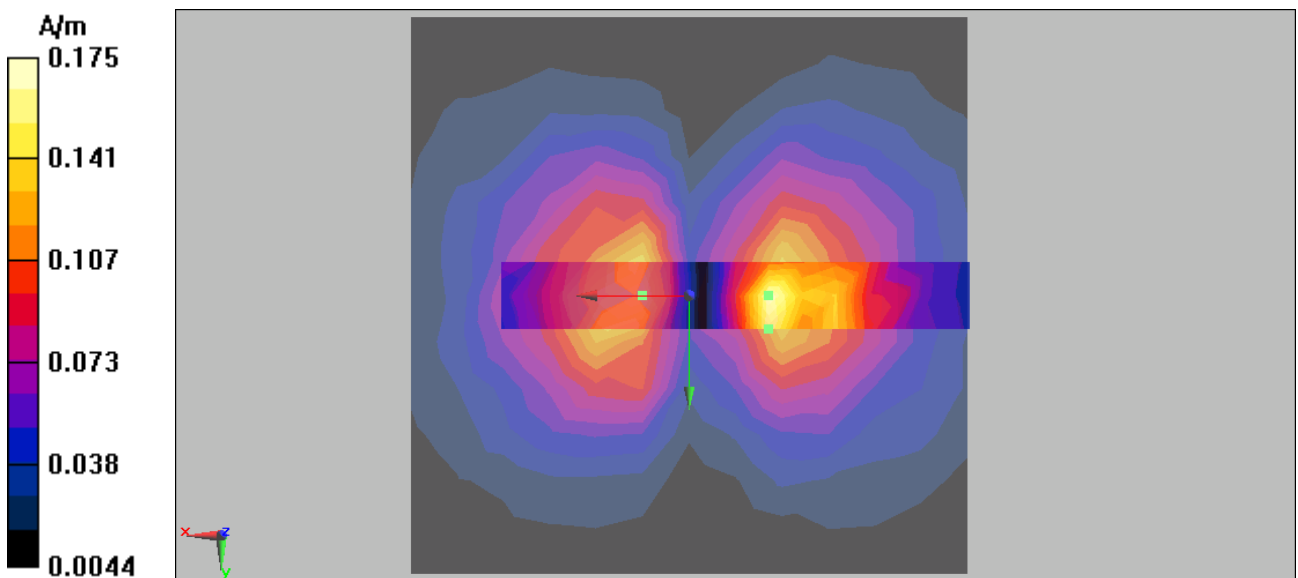


Figure 23 T-Coil CDMA AWS X longitudinal slip close

TA Technology (Shanghai) Co., Ltd.

Test Report

Report No. RZA1102-0186HAC02R1

Page 67 of 89

T-Coil CDMA AWS Y transversal slip close

Date/Time: 3/6/2011 8:17:25 PM

Communication System: CDMA AWS; Frequency: 1732.5 MHz; Duty Cycle: 1:1

Ambient Temperature: 22.3 °C

Phantom section: TCoil Section

DASY5 Configuration:

Probe: AM1DV3 - 3082; ; Calibrated: 11/29/2010

Electronics: DAE4 Sn871; Calibrated: 11/18/2010

Phantom: HAC Test Arch with AMCC; Type: SD HAC P01 BA; Serial: Not Specified

Measurement SW: DASY5, V5.0 Build 120; SEMCAD X Version 13.4 Build 45

Scans/y (transversal) 4.2mm 50 x 50/ABM Signal(x,y,z) (13x13x1):

Measurement grid: dx=10mm, dy=10mm

Signal Type: Audio File (.wav) 48k_voice_1kHz_1s.wav

Output Gain: 28.8

Measure Window Start: 0ms

Measure Window Length: 1000ms

BWC applied: 0.158027 dB

Device Reference Point: 0, 0, -6.3 mm

Category	Telephone parameters WD signal quality [(signal+noise)-to-noise ratio in decibels]
Category T1	0 dB to 10 dB
Category T2	10 dB to 20 dB
Category T3	20 dB to 30 dB
Category T4	> 30 dB

Cursor:

ABM1 comp = -16 dB A/m

BWC Factor = 0.158027 dB

Location: 0, 8.3, 3.7 mm

Scans/y (transversal) fine 3mm 6 x 42/ABM Signal(x,y,z) (3x15x1):

Measurement grid: dx=10mm, dy=10mm

Signal Type: Audio File (.wav) 48k_voice_1kHz_1s.wav

Output Gain: 28.8

Measure Window Start: 0ms

Measure Window Length: 1000ms

BWC applied: 0.158027 dB

Device Reference Point: 0, 0, -6.3 mm

Category	Telephone parameters WD signal quality [(signal+noise)-to-noise ratio in decibels]
Category T1	0 dB to 10 dB

TA Technology (Shanghai) Co., Ltd. Test Report

Category T2	10 dB to 20 dB
Category T3	20 dB to 30 dB
Category T4	> 30 dB

Cursor:

ABM1 comp = -15.5 dB A/m
 BWC Factor = 0.158027 dB
 Location: -1.2, -9, 3.7 mm

Scans/y (transversal) fine 3mm 6 x 42/ABM SNR(x,y,z) (3x15x1):

Measurement grid: dx=10mm, dy=10mm
 Signal Type: Audio File (.wav) 48k_voice_1kHz_1s.wav
 Output Gain: 28.8
 Measure Window Start: 0ms
 Measure Window Length: 1000ms
 BWC applied: 0.158027 dB
 Device Reference Point: 0, 0, -6.3 mm

Category	Telephone parameters WD signal quality [(signal+noise)-to-noise ratio in decibels]
Category T1	0 dB to 10 dB
Category T2	10 dB to 20 dB
Category T3	20 dB to 30 dB
Category T4	> 30 dB

Cursor:

ABM1/ABM2 = 28 dB
 ABM1 comp = -16.4 dB A/m
 BWC Factor = 0.158027 dB
 Location: -1.2, 6, 3.7 mm

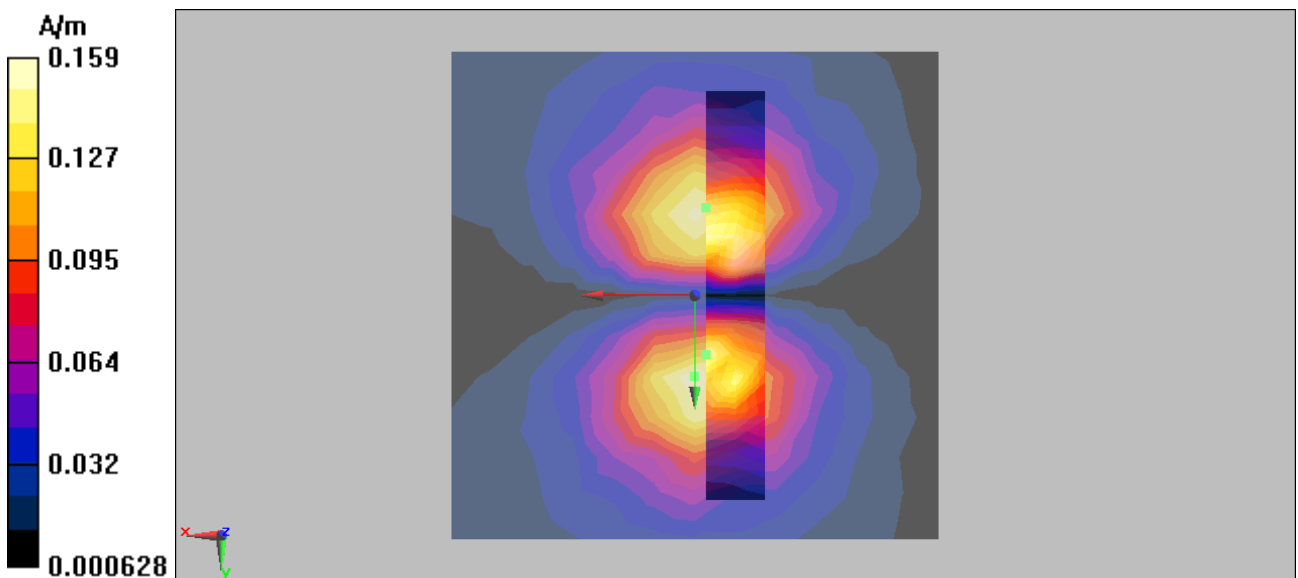


Figure 24 T-Coil CDMA AWS Y transversal slip close

TA Technology (Shanghai) Co., Ltd.
Test Report

Report No. RZA1102-0186HAC02R1

Page 69 of 89

T-Coil CDMA AWS Z Axial slip close

Date/Time: 3/6/2011 7:54:22 PM

Communication System: CDMA AWS; Frequency: 1732.5 MHz; Duty Cycle: 1:1

Medium parameters used: $\sigma = 0$ mho/m, $\epsilon_r = 1$; $\rho = 1$ kg/m³

Ambient Temperature: 22.3 °C

Phantom section: TCoil Section

DASY5 Configuration:

Probe: AM1DV3 - 3082; ; Calibrated: 11/29/2010

Electronics: DAE4 Sn871; Calibrated: 11/18/2010

Phantom: HAC Test Arch with AMCC; Type: SD HAC P01 BA; Serial: Not Specified

Measurement SW: DASY5, V5.0 Build 120; SEMCAD X Version 13.4 Build 45

Scans/z (axial) 4.2mm 50 x 50/ABM Signal(x,y,z) (13x13x1):

Measurement grid: dx=10mm, dy=10mm

Signal Type: Audio File (.wav) 48k_voice_1kHz_1s.wav

Output Gain: 28.8

Measure Window Start: 0ms

Measure Window Length: 1000ms

BWC applied: 0.158027 dB

Device Reference Point: 0, 0, -6.3 mm

Category	Telephone parameters WD signal quality [(signal+noise)-to-noise ratio in decibels]
Category T1	0 dB to 10 dB
Category T2	10 dB to 20 dB
Category T3	20 dB to 30 dB
Category T4	> 30 dB

Cursor:

ABM1 comp = -8.59 dB A/m

BWC Factor = 0.158027 dB

Location: -4.2, 0, 3.7 mm

Scans/z (axial) fine 2mm 8 x 8/ABM Signal(x,y,z) (5x5x1):

Measurement grid: dx=10mm, dy=10mm

Signal Type: Audio File (.wav) 48k_voice_1kHz_1s.wav

Output Gain: 28.8

Measure Window Start: 0ms

Measure Window Length: 1000ms

BWC applied: 0.158027 dB

Device Reference Point: 0, 0, -6.3 mm

Category	Telephone parameters WD signal quality [(signal+noise)-to-noise ratio in decibels]
-----------------	---

TA Technology (Shanghai) Co., Ltd.

Test Report

Report No. RZA1102-0186HAC02R1

Page 70 of 89

Category T1	0 dB to 10 dB
Category T2	10 dB to 20 dB
Category T3	20 dB to 30 dB
Category T4	> 30 dB

Cursor:

ABM1 comp = -6.82 dB A/m

BWC Factor = 0.158027 dB

Location: -0.2, 0, 3.7 mm

Scans/z (axial) fine 2mm 8 x 8/ABM SNR(x,y,z) (5x5x1):

Measurement grid: dx=10mm, dy=10mm

Signal Type: Audio File (.wav) 48k_voice_1kHz_1s.wav

Output Gain: 28.8

Measure Window Start: 0ms

Measure Window Length: 1000ms

BWC applied: 0.158027 dB

Device Reference Point: 0, 0, -6.3 mm

Category	Telephone parameters WD signal quality [(signal+noise)-to-noise ratio in decibels]
Category T1	0 dB to 10 dB
Category T2	10 dB to 20 dB
Category T3	20 dB to 30 dB
Category T4	> 30 dB

Cursor:

ABM1/ABM2 = 26.1 dB

ABM1 comp = -7.88 dB A/m

BWC Factor = 0.158027 dB

Location: -2.2, -2, 3.7 mm

Scans/z (axial) wideband at best S/N/ABM Freq Resp(x,y,z,f) (1x1x1):

Measurement grid: dx=10mm, dy=10mm

Signal Type: Audio File (.wav) 48k_voice_300-3000_2s.wav

Output Gain: 56.4

Measure Window Start: 0ms

Measure Window Length: 2000ms

BWC applied: 10.8 dB

Device Reference Point: 0, 0, -6.3 mm

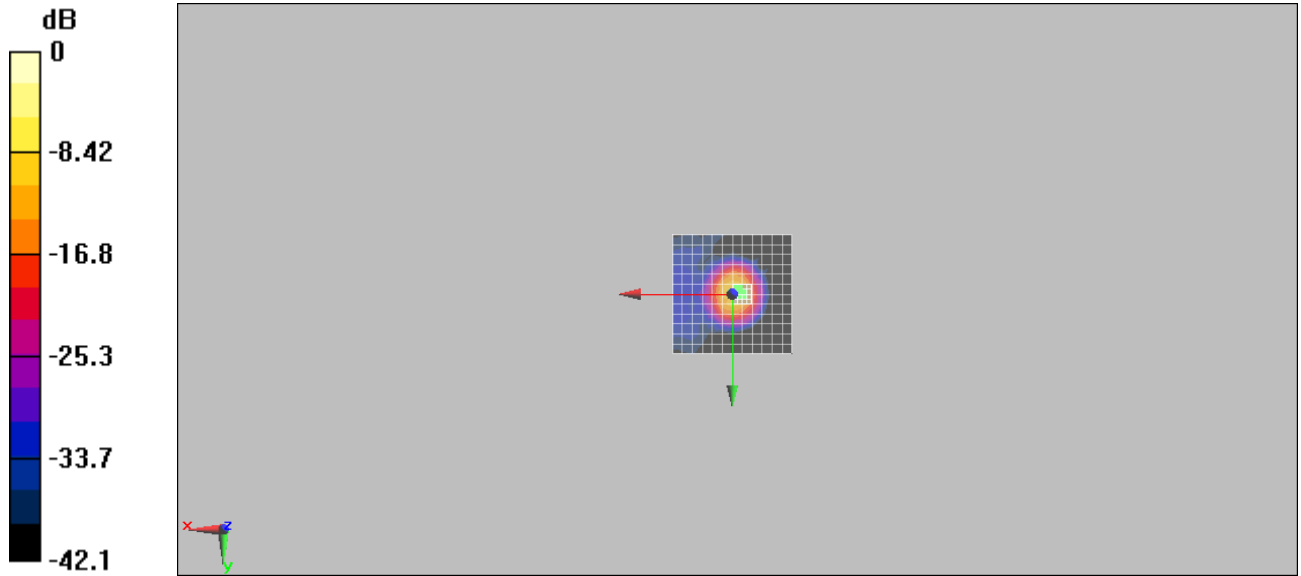
Category	Telephone parameters WD signal quality [(signal+noise)-to-noise ratio in decibels]
Category T1	0 dB to 10 dB
Category T2	10 dB to 20 dB
Category T3	20 dB to 30 dB
Category T4	> 30 dB

Cursor:

Diff = 1.32 dB

BWC Factor = 10.8 dB

Location: -2.2, -2, 3.7 mm



0 dB = 1A/m

Figure 25 T-Coil CDMA AWS Z Axial slip close

TA Technology (Shanghai) Co., Ltd.

Test Report

Report No. RZA1102-0186HAC02R1

Page 72 of 89

T-Coil CDMA AWS X longitudinal slip open

Date/Time: 3/6/2011 8:45:10 PM

Communication System: CDMA AWS; Frequency: 1732.5 MHz; Duty Cycle: 1:1

Ambient Temperature: 22.3 °C

Phantom section: TCoil Section

DASY5 Configuration:

Probe: AM1DV3 - 3082; ; Calibrated: 11/29/2010

Electronics: DAE4 Sn871; Calibrated: 11/18/2010

Phantom: HAC Test Arch with AMCC; Type: SD HAC P01 BA; Serial: Not Specified

Measurement SW: DASY5, V5.0 Build 120; SEMCAD X Version 13.4 Build 45

Scans/x (longitudinal) 4.2mm 50 x 50/ABM Signal(x,y,z) (13x13x1):

Measurement grid: dx=10mm, dy=10mm

Signal Type: Audio File (.wav) 48k_voice_1kHz_1s.wav

Output Gain: 28.8

Measure Window Start: 0ms

Measure Window Length: 1000ms

BWC applied: 0.158027 dB

Device Reference Point: 0, 0, -6.3 mm

Category	Telephone parameters WD signal quality [(signal+noise)-to-noise ratio in decibels]
Category T1	0 dB to 10 dB
Category T2	10 dB to 20 dB
Category T3	20 dB to 30 dB
Category T4	> 30 dB

Cursor:

ABM1 comp = -16.2 dB A/m

BWC Factor = 0.158027 dB

Location: -8.3, 0, 3.7 mm

Scans/x (longitudinal) fine 3mm 42 x 6/ABM Signal(x,y,z) (15x3x1):

Measurement grid: dx=10mm, dy=10mm

Signal Type: Audio File (.wav) 48k_voice_1kHz_1s.wav

Output Gain: 28.8

Measure Window Start: 0ms

Measure Window Length: 1000ms

BWC applied: 0.158027 dB

Device Reference Point: 0, 0, -6.3 mm

Category	Telephone parameters WD signal quality [(signal+noise)-to-noise ratio in decibels]
Category T1	0 dB to 10 dB

TA Technology (Shanghai) Co., Ltd. Test Report

Category T2	10 dB to 20 dB
Category T3	20 dB to 30 dB
Category T4	> 30 dB

Cursor:

ABM1 comp = -15.6 dB A/m
 BWC Factor = 0.158027 dB
 Location: 6, 0, 3.7 mm

Scans/x (longitudinal) fine 3mm 42 x 6/ABM SNR(x,y,z) (15x3x1):

Measurement grid: dx=10mm, dy=10mm
 Signal Type: Audio File (.wav) 48k_voice_1kHz_1s.wav
 Output Gain: 28.8
 Measure Window Start: 0ms
 Measure Window Length: 1000ms
 BWC applied: 0.158027 dB
 Device Reference Point: 0, 0, -6.3 mm

Category	Telephone parameters WD signal quality [(signal+noise)-to-noise ratio in decibels]
Category T1	0 dB to 10 dB
Category T2	10 dB to 20 dB
Category T3	20 dB to 30 dB
Category T4	> 30 dB

Cursor:

ABM1/ABM2 = 27.6 dB
 ABM1 comp = -16.2 dB A/m
 BWC Factor = 0.158027 dB
 Location: -9, 3, 3.7 mm

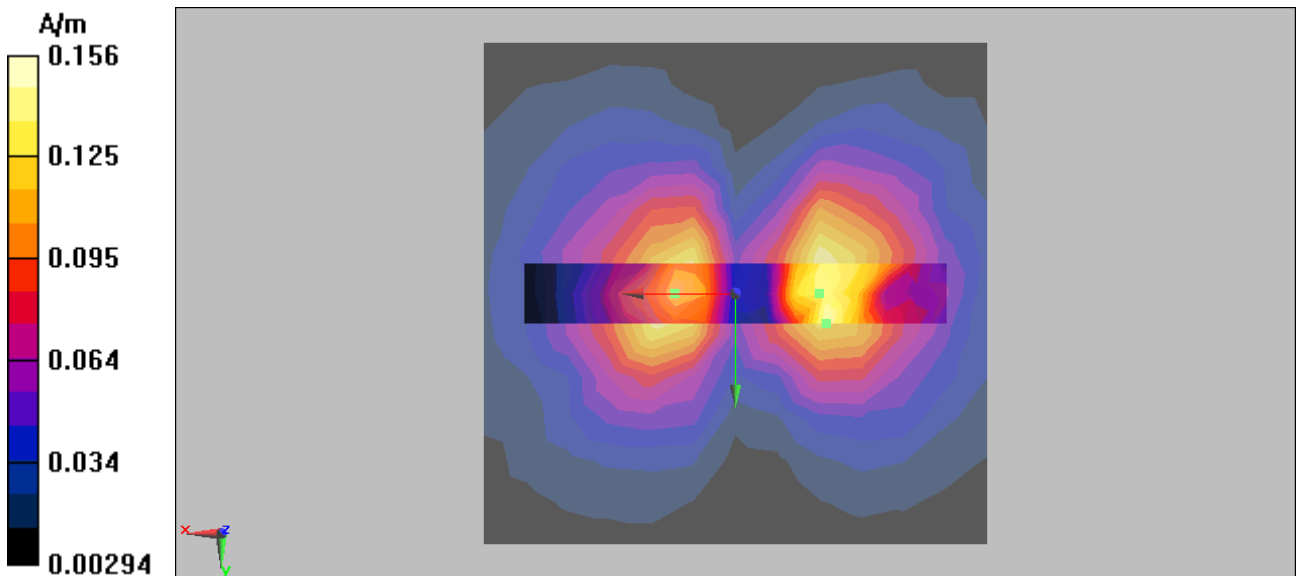


Figure 26 T-Coil CDMA AWS X longitudinal slip open

TA Technology (Shanghai) Co., Ltd.

Test Report

Report No. RZA1102-0186HAC02R1

Page 74 of 89

T-Coil CDMA AWS Y transversal slip open

Date/Time: 3/6/2011 8:56:54 PM

Communication System: CDMA AWS; Frequency: 1732.5 MHz; Duty Cycle: 1:1

Ambient Temperature: 22.3 °C

Phantom section: TCoil Section

DASY5 Configuration:

Probe: AM1DV3 - 3082; ; Calibrated: 11/29/2010

Electronics: DAE4 Sn871; Calibrated: 11/18/2010

Phantom: HAC Test Arch with AMCC; Type: SD HAC P01 BA; Serial: Not Specified

Measurement SW: DASY5, V5.0 Build 120; SEMCAD X Version 13.4 Build 45

Scans/y (transversal) 4.2mm 50 x 50/ABM Signal(x,y,z) (13x13x1):

Measurement grid: dx=10mm, dy=10mm

Signal Type: Audio File (.wav) 48k_voice_1kHz_1s.wav

Output Gain: 28.8

Measure Window Start: 0ms

Measure Window Length: 1000ms

BWC applied: 0.158027 dB

Device Reference Point: 0, 0, -6.3 mm

Category	Telephone parameters WD signal quality [(signal+noise)-to-noise ratio in decibels]
Category T1	0 dB to 10 dB
Category T2	10 dB to 20 dB
Category T3	20 dB to 30 dB
Category T4	> 30 dB

Cursor:

ABM1 comp = -16.2 dB A/m

BWC Factor = 0.158027 dB

Location: -4.2, 8.3, 3.7 mm

Scans/y (transversal) fine 3mm 6 x 42/ABM Signal(x,y,z) (3x15x1):

Measurement grid: dx=10mm, dy=10mm

Signal Type: Audio File (.wav) 48k_voice_1kHz_1s.wav

Output Gain: 28.8

Measure Window Start: 0ms

Measure Window Length: 1000ms

BWC applied: 0.158027 dB

Device Reference Point: 0, 0, -6.3 mm

Category	Telephone parameters WD signal quality [(signal+noise)-to-noise ratio in decibels]
Category T1	0 dB to 10 dB

TA Technology (Shanghai) Co., Ltd. Test Report

Category T2	10 dB to 20 dB
Category T3	20 dB to 30 dB
Category T4	> 30 dB

Cursor:

ABM1 comp = -15.9 dB A/m
 BWC Factor = 0.158027 dB
 Location: 0, -6, 3.7 mm

Scans/y (transversal) fine 3mm 6 x 42/ABM SNR(x,y,z) (3x15x1):

Measurement grid: dx=10mm, dy=10mm
 Signal Type: Audio File (.wav) 48k_voice_1kHz_1s.wav
 Output Gain: 28.8
 Measure Window Start: 0ms
 Measure Window Length: 1000ms
 BWC applied: 0.158027 dB
 Device Reference Point: 0, 0, -6.3 mm

Category	Telephone parameters WD signal quality [(signal+noise)-to-noise ratio in decibels]
Category T1	0 dB to 10 dB
Category T2	10 dB to 20 dB
Category T3	20 dB to 30 dB
Category T4	> 30 dB

Cursor:

ABM1/ABM2 = 37.4 dB
 ABM1 comp = -15.9 dB A/m
 BWC Factor = 0.158027 dB
 Location: 0, -6, 3.7 mm

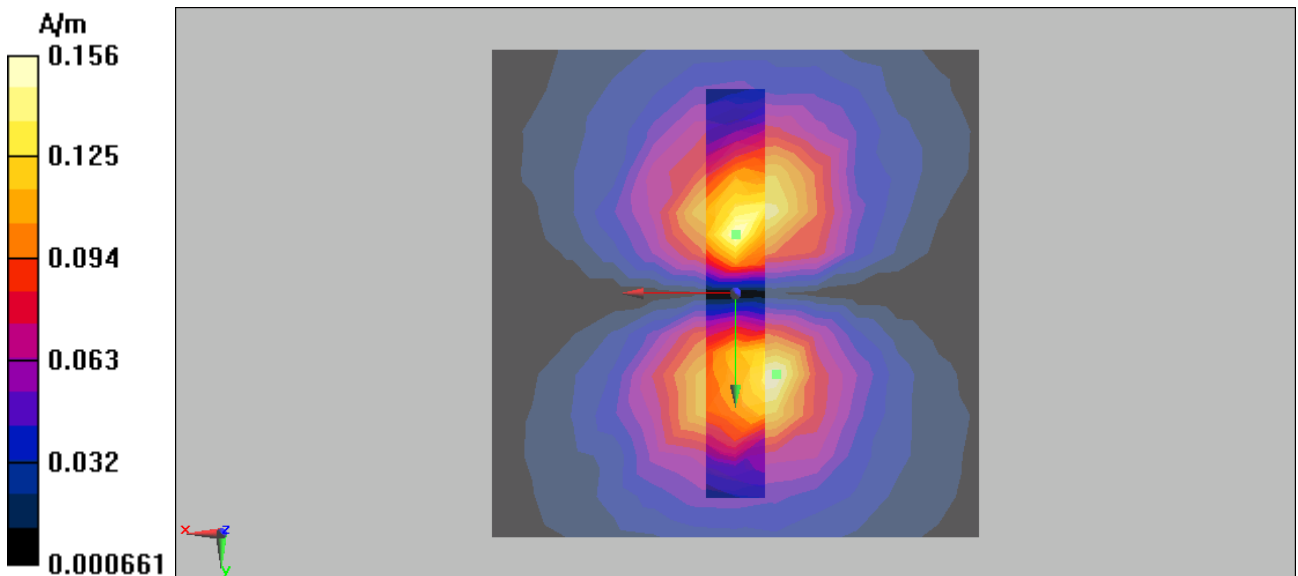


Figure 27 T-Coil CDMA AWS Y transversal slip open

TA Technology (Shanghai) Co., Ltd.

Test Report

Report No. RZA1102-0186HAC02R1

Page 76 of 89

T-Coil CDMA AWS Z Axial slip open

Date/Time: 3/6/2011 8:35:00 PM

Communication System: CDMA AWS; Frequency: 1732.5 MHz; Duty Cycle: 1:1

Ambient Temperature: 22.3 °C

Phantom section: TCoil Section

DASY5 Configuration:

Probe: AM1DV3 - 3082; ; Calibrated: 11/29/2010

Electronics: DAE4 Sn871; Calibrated: 11/18/2010

Phantom: HAC Test Arch with AMCC; Type: SD HAC P01 BA; Serial: Not Specified

Measurement SW: DASY5, V5.0 Build 120; SEMCAD X Version 13.4 Build 45

Scans/z (axial) 4.2mm 50 x 50/ABM Signal(x,y,z) (13x13x1):

Measurement grid: dx=10mm, dy=10mm

Signal Type: Audio File (.wav) 48k_voice_1kHz_1s.wav

Output Gain: 28.8

Measure Window Start: 0ms

Measure Window Length: 1000ms

BWC applied: 0.158027 dB

Device Reference Point: 0, 0, -6.3 mm

Category	Telephone parameters WD signal quality [(signal+noise)-to-noise ratio in decibels]
Category T1	0 dB to 10 dB
Category T2	10 dB to 20 dB
Category T3	20 dB to 30 dB
Category T4	> 30 dB

Cursor:

ABM1 comp = -8.09 dB A/m

BWC Factor = 0.158027 dB

Location: 0, 0, 3.7 mm

Scans/z (axial) fine 2mm 8 x 8/ABM Signal(x,y,z) (5x5x1):

Measurement grid: dx=10mm, dy=10mm

Signal Type: Audio File (.wav) 48k_voice_1kHz_1s.wav

Output Gain: 28.8

Measure Window Start: 0ms

Measure Window Length: 1000ms

BWC applied: 0.158027 dB

Device Reference Point: 0, 0, -6.3 mm

Category	Telephone parameters WD signal quality [(signal+noise)-to-noise ratio in decibels]
Category T1	0 dB to 10 dB

TA Technology (Shanghai) Co., Ltd.

Test Report

Report No. RZA1102-0186HAC02R1

Page 77 of 89

Category T2	10 dB to 20 dB
Category T3	20 dB to 30 dB
Category T4	> 30 dB

Cursor:

ABM1 comp = -7.26 dB A/m

BWC Factor = 0.158027 dB

Location: 0, -2, 3.7 mm

Scans/z (axial) fine 2mm 8 x 8/ABM SNR(x,y,z) (5x5x1):

Measurement grid: dx=10mm, dy=10mm

Signal Type: Audio File (.wav) 48k_voice_1kHz_1s.wav

Output Gain: 28.8

Measure Window Start: 0ms

Measure Window Length: 1000ms

BWC applied: 0.158027 dB

Device Reference Point: 0, 0, -6.3 mm

Category	Telephone parameters WD signal quality [(signal+noise)-to-noise ratio in decibels]
Category T1	0 dB to 10 dB
Category T2	10 dB to 20 dB
Category T3	20 dB to 30 dB
Category T4	> 30 dB

Cursor:

ABM1/ABM2 = 40.3 dB

ABM1 comp = -7.84 dB A/m

BWC Factor = 0.158027 dB

Location: -2, 2, 3.7 mm

Scans/z (axial) wideband at best S/N/ABM Freq Resp(x,y,z,f) (1x1x1):

Measurement grid: dx=10mm, dy=10mm

Signal Type: Audio File (.wav) 48k_voice_300-3000_2s.wav

Output Gain: 56.4

Measure Window Start: 0ms

Measure Window Length: 2000ms

BWC applied: 10.8 dB

Device Reference Point: 0, 0, -6.3 mm

Category	Telephone parameters WD signal quality [(signal+noise)-to-noise ratio in decibels]
Category T1	0 dB to 10 dB
Category T2	10 dB to 20 dB
Category T3	20 dB to 30 dB
Category T4	> 30 dB

Cursor:

TA Technology (Shanghai) Co., Ltd.
Test Report

Report No. RZA1102-0186HAC02R1

Page 78 of 89

Diff = 0.981 dB

BWC Factor = 10.8 dB

Location: -2, 2, 3.7 mm

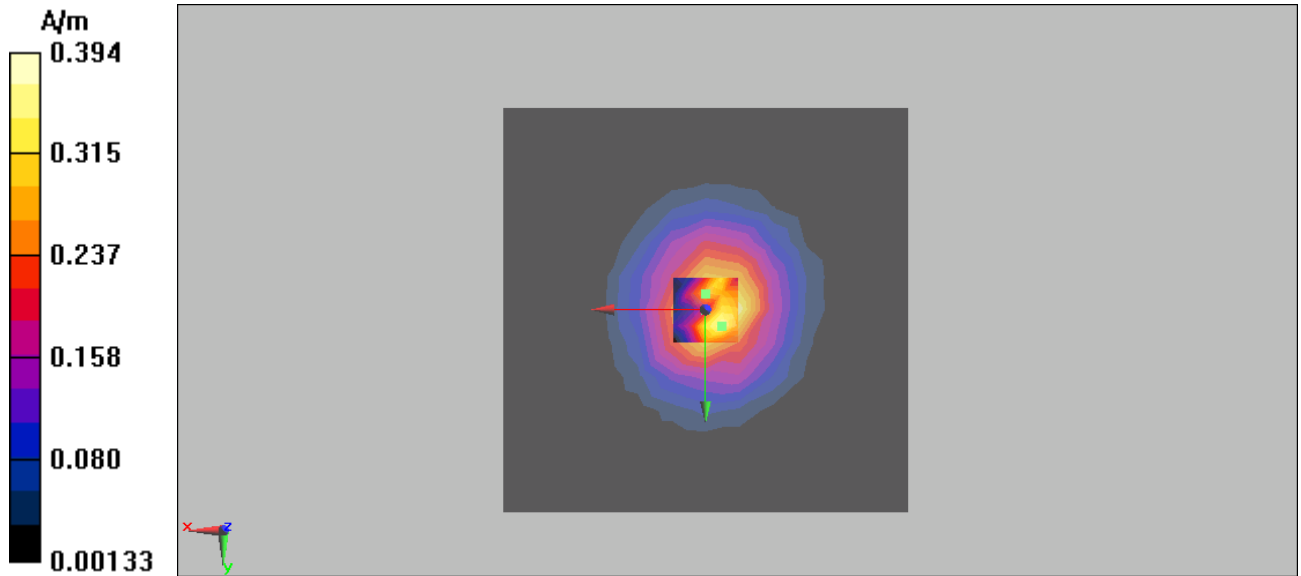


Figure 28 T-Coil CDMA AWS Z Axial slip open

TA Technology (Shanghai) Co., Ltd. Test Report

Report No. RZA1102-0186HAC02R1

Page 79 of 89

ANNEX C: Probe Calibration Certificate

**Calibration Laboratory of
Schmid & Partner
Engineering AG**
Zeughausstrasse 43, 8004 Zurich, Switzerland



S Schweizerischer Kalibrierdienst
S Service suisse d'étalonnage
C Servizio svizzero di taratura
S Swiss Calibration Service

Accredited by the Swiss Accreditation Service (SAS)
The Swiss Accreditation Service is one of the signatories to the EA
Multilateral Agreement for the recognition of calibration certificates

Accreditation No.: **SCS 108**

Client **TA Technology SH (Auden)**

Certificate No.: **AM1DV3-3082_Nov10**

CALIBRATION CERTIFICATE

Object: **AM1DV3 - SN: 3082**

Calibration procedure(s): **QA CAL-24.v2
Calibration procedure for AM1D magnetic field probes and TMFS in the
audio range**

Calibration date: **November 29, 2010**

This calibration certificate documents the traceability to national standards, which realize the physical units of measurements (SI).
The measurements and the uncertainties with confidence probability are given on the following pages and are part of the certificate.

All calibrations have been conducted in the closed laboratory facility; environment temperature (22 ± 3)°C and humidity < 70%.

Calibration Equipment used (M&TE critical for calibration)

Primary Standards	ID #	Cal Date (Certificate No.)	Scheduled Calibration
Keithley Multimeter Type 2001	SN: 0810278	28-Sep-10 (No:10376)	Sep-11
Reference Probe AM1DV3	SN: 3000	6-Sep-10 (No. AM1D-3000_Sep10)	Sep-11
DAE4	SN: 781	22-Jan-10 (No. DAE4-781_Jan10)	Jan-11
Secondary Standards	ID #	Check Date (in house)	Scheduled Check
AMCC	1050	15-Oct-09 (in house check Oct-09)	Oct-11

Calibrated by:	Name Mike Meili	Function Laboratory Technician	Signature
Approved by:	Name Fin Bornholt	R&D Director	

Issued: November 29, 2010

This calibration certificate shall not be reproduced except in full without written approval of the laboratory.

References

- [1] ANSI C63.19-2007
American National Standard for Methods of Measurement of Compatibility between Wireless Communications Devices and Hearing Aids.
- [2] DASY4 manual, Chapter: Hearing Aid Compatibility (HAC) T-Coil Extension

Description of the AM1D probe

The AM1D Audio Magnetic Field Probe is a fully shielded magnetic field probe for the frequency range from 100 Hz to 20 kHz. The pickup coil is compliant with the dimensional requirements of [1]. The probe includes a symmetric low noise amplifier for the signal available at the shielded 3 pin connector at the side. Power is supplied via the same connector (phantom power supply) and monitored via the LED near the connector. The 7 pin connector at the end of the probe does not carry any signals, but determines the angle of the sensor when mounted on the DAE. The probe supports mechanical detection of the surface.

The single sensor in the probe is arranged in a tilt angle allowing measurement of 3 orthogonal field components when rotating the probe by 120° around its axis. It is aligned with the perpendicular component of the field, if the probe axis is tilted nominally 35.3° above the measurement plane, using the connector rotation and sensor angle stated below.

The probe is fully RF shielded when operated with the matching signal cable (shielded) and allows measurement of audio magnetic fields in the close vicinity of RF emitting wireless devices according to [1] without additional shielding.

Handling of the item

The probe is manufactured from stainless steel. In order to maintain the performance and calibration of the probe, it must not be opened. The probe is designed for operation in air and shall not be exposed to humidity or liquids. For proper operation of the surface detection and emergency stop functions in a DASY system, the probe must be operated with the special probe cup provided (larger diameter).

Methods Applied and Interpretation of Parameters

- *Coordinate System:* The AM1D probe is mounted in the DASY system for operation with a HAC Test Arch phantom with AMCC Helmholtz calibration coil according to [2], with the tip pointing to "southwest" orientation.
- *Functional Test:* The functional test preceding calibration includes test of Noise level
RF immunity (1kHz AM modulated signal). The shield of the probe cable must be well connected.
Frequency response verification from 100 Hz to 10 kHz.
- *Connector Rotation:* The connector at the end of the probe does not carry any signals and is used for fixation to the DAE only. The probe is operated in the center of the AMCC Helmholtz coil using a 1 kHz magnetic field signal. Its angle is determined from the two minima at nominally +120° and -120° rotation, so the sensor in the tip of the probe is aligned to the vertical plane in z-direction, corresponding to the field maximum in the AMCC Helmholtz calibration coil.
- *Sensor Angle:* The sensor tilting in the vertical plane from the ideal vertical direction is determined from the two minima at nominally +120° and -120°. DASY system uses this angle to align the sensor for radial measurements to the x and y axis in the horizontal plane.
- *Sensitivity:* With the probe sensor aligned to the z-field in the AMCC, the output of the probe is compared to the magnetic field in the AMCC at 1 kHz. The field in the AMCC Helmholtz coil is given by the geometry and the current through the coil, which is monitored on the precision shunt resistor of the coil.

TA Technology (Shanghai) Co., Ltd.
Test Report

Report No. RZA1102-0186HAC02R1

Page 81 of 89

AM1D probe identification and configuration data

Item	AM1DV3 Audio Magnetic 1D Field Probe
Type No	SP AM1 001 BA
Serial No	3082

Overall length	296 mm
Tip diameter	6.0 mm (at the tip)
Sensor offset	3.0 mm (centre of sensor from tip)
Internal Amplifier	20 dB

Manufacturer / Origin	Schmid & Partner Engineering AG, Zürich, Switzerland
Manufacturing date	May-2010
Last calibration date	n/a

Calibration data

Connector rotation angle	(in DASYS system)	2.1 °	+/- 3.6 ° (k=2)
Sensor angle	(in DASYS system)	0.61 °	+/- 0.5 ° (k=2)
Sensitivity at 1 kHz	(in DASYS system)	0.00738 V / (A/m)	+/- 2.2 % (k=2)

TA Technology (Shanghai) Co., Ltd. Test Report

Report No. RZA1102-0186HAC02R1

Page 82 of 89

ANNEX D: DAE4 Calibration Certificate

**Calibration Laboratory of
Schmid & Partner
Engineering AG**
Zeughausstrasse 43, 8004 Zurich, Switzerland



S Schweizerischer Kalibrierdienst
S Service suisse d'étalonnage
C Servizio svizzero di taratura
S Swiss Calibration Service

Accredited by the Swiss Accreditation Service (SAS)
The Swiss Accreditation Service is one of the signatories to the EA
Multilateral Agreement for the recognition of calibration certificates

Accreditation No.: **SCS 108**

Client **TA - SH (Auden)**

Certificate No: **DAE4-871_Nov10**

CALIBRATION CERTIFICATE

Object **DAE4 - SD 000 D04 BJ - SN: 871**

Calibration procedure(s) **QA CAL-06.v22
Calibration procedure for the data acquisition electronics (DAE)**

Calibration date: **November 18, 2010**

This calibration certificate documents the traceability to national standards, which realize the physical units of measurements (SI).
The measurements and the uncertainties with confidence probability are given on the following pages and are part of the certificate.

All calibrations have been conducted in the closed laboratory facility: environment temperature (22 ± 3)°C and humidity < 70%.

Calibration Equipment used (M&TE critical for calibration)

Primary Standards	ID #	Cal Date (Certificate No.)	Scheduled Calibration
Keithley Multimeter Type 2001	SN: 0810278	28-Sep-10 (No:10376)	Sep-11
Secondary Standards	ID #	Check Date (in house)	Scheduled Check
Calibrator Box V1.1	SE UMS 006 AB 1004	07-Jun-10 (in house check)	In house check: Jun-11

	Name	Function	Signature
Calibrated by:	Andrea Guntli	Technician	
Approved by:	Fin Bornholt	R&D Director	

Issued: November 18, 2010

This calibration certificate shall not be reproduced except in full without written approval of the laboratory.

**Calibration Laboratory of
Schmid & Partner
Engineering AG**
Zeughausstrasse 43, 8004 Zurich, Switzerland



S Schweizerischer Kalibrierdienst
C Service suisse d'étalonnage
S Servizio svizzero di taratura
S Swiss Calibration Service

Accredited by the Swiss Accreditation Service (SAS)
The Swiss Accreditation Service is one of the signatories to the EA
Multilateral Agreement for the recognition of calibration certificates

Accreditation No.: **SCS 108**

Glossary

DAE data acquisition electronics
Connector angle information used in DASY system to align probe sensor X to the robot coordinate system.

Methods Applied and Interpretation of Parameters

- *DC Voltage Measurement*: Calibration Factor assessed for use in DASY system by comparison with a calibrated instrument traceable to national standards. The figure given corresponds to the full scale range of the voltmeter in the respective range.
- *Connector angle*: The angle of the connector is assessed measuring the angle mechanically by a tool inserted. Uncertainty is not required.
- The following parameters as documented in the Appendix contain technical information as a result from the performance test and require no uncertainty.
 - *DC Voltage Measurement Linearity*: Verification of the Linearity at +10% and -10% of the nominal calibration voltage. Influence of offset voltage is included in this measurement.
 - *Common mode sensitivity*: Influence of a positive or negative common mode voltage on the differential measurement.
 - *Channel separation*: Influence of a voltage on the neighbor channels not subject to an input voltage.
 - *AD Converter Values with inputs shorted*: Values on the internal AD converter corresponding to zero input voltage
 - *Input Offset Measurement*: Output voltage and statistical results over a large number of zero voltage measurements.
 - *Input Offset Current*: Typical value for information; Maximum channel input offset current, not considering the input resistance.
 - *Input resistance*: Typical value for information: DAE input resistance at the connector, during internal auto-zeroing and during measurement.
 - *Low Battery Alarm Voltage*: Typical value for information. Below this voltage, a battery alarm signal is generated.
 - *Power consumption*: Typical value for information. Supply currents in various operating modes.

TA Technology (Shanghai) Co., Ltd.
Test Report

DC Voltage Measurement

A/D - Converter Resolution nominal

High Range: 1LSB = 6.1 μ V, full range = -100...+300 mV

Low Range: 1LSB = 61nV, full range = -1.....+3mV

DASY measurement parameters: Auto Zero Time: 3 sec; Measuring time: 3 sec

Calibration Factors	X	Y	Z
High Range	404.757 \pm 0.1% (k=2)	404.740 \pm 0.1% (k=2)	405.181 \pm 0.1% (k=2)
Low Range	3.98219 \pm 0.7% (k=2)	3.93489 \pm 0.7% (k=2)	3.96831 \pm 0.7% (k=2)

Connector Angle

Connector Angle to be used in DASY system	90.0 $^{\circ}$ \pm 1 $^{\circ}$
---	------------------------------------

TA Technology (Shanghai) Co., Ltd.

Test Report

Appendix

1. DC Voltage Linearity

High Range	Reading (μV)	Difference (μV)	Error (%)
Channel X + Input	200001.2	-1.56	-0.00
Channel X + Input	20000.71	0.71	0.00
Channel X - Input	-19997.87	1.63	-0.01
Channel Y + Input	199994.3	1.99	0.00
Channel Y + Input	19998.92	-1.08	-0.01
Channel Y - Input	-20000.26	-0.76	0.00
Channel Z + Input	200009.2	-1.04	-0.00
Channel Z + Input	19998.70	-1.10	-0.01
Channel Z - Input	-20000.16	-0.76	0.00

Low Range	Reading (μV)	Difference (μV)	Error (%)
Channel X + Input	2000.1	0.16	0.01
Channel X + Input	199.58	-0.52	-0.26
Channel X - Input	-200.79	-0.89	0.45
Channel Y + Input	1999.9	-0.03	-0.00
Channel Y + Input	199.45	-0.55	-0.27
Channel Y - Input	-200.31	-0.41	0.21
Channel Z + Input	2000.1	0.33	0.02
Channel Z + Input	199.13	-0.77	-0.38
Channel Z - Input	-201.47	-1.37	0.69

2. Common mode sensitivity

DASY measurement parameters: Auto Zero Time: 3 sec; Measuring time: 3 sec

	Common mode Input Voltage (mV)	High Range Average Reading (μV)	Low Range Average Reading (μV)
Channel X	200	14.25	12.86
	- 200	-12.68	-14.21
Channel Y	200	-10.04	-10.39
	- 200	9.20	9.17
Channel Z	200	-0.85	-1.40
	- 200	-0.34	-0.31

3. Channel separation

DASY measurement parameters: Auto Zero Time: 3 sec; Measuring time: 3 sec

	Input Voltage (mV)	Channel X (μV)	Channel Y (μV)	Channel Z (μV)
Channel X	200	-	2.85	0.69
Channel Y	200	2.41	-	2.73
Channel Z	200	2.54	0.73	-

TA Technology (Shanghai) Co., Ltd.

Test Report

4. AD-Converter Values with inputs shorted

DASY measurement parameters: Auto Zero Time: 3 sec; Measuring time: 3 sec

	High Range (LSB)	Low Range (LSB)
Channel X	15920	15517
Channel Y	16171	16732
Channel Z	15803	16474

5. Input Offset Measurement

DASY measurement parameters: Auto Zero Time: 3 sec; Measuring time: 3 sec

Input 10M Ω

	Average (μ V)	min. Offset (μ V)	max. Offset (μ V)	Std. Deviation (μ V)
Channel X	0.03	-2.35	0.86	0.43
Channel Y	-0.50	-1.49	-0.49	0.38
Channel Z	-0.92	-2.21	0.14	0.44

6. Input Offset Current

Nominal Input circuitry offset current on all channels: <25fA

7. Input Resistance (Typical values for information)

	Zeroing (kOhm)	Measuring (MOhm)
Channel X	200	200
Channel Y	200	200
Channel Z	200	200

8. Low Battery Alarm Voltage (Typical values for information)

Typical values	Alarm Level (VDC)
Supply (+ Vcc)	+7.9
Supply (- Vcc)	-7.6

9. Power Consumption (Typical values for information)

Typical values	Switched off (mA)	Stand by (mA)	Transmitting (mA)
Supply (+ Vcc)	+0.01	+6	+14
Supply (- Vcc)	-0.01	-8	-9