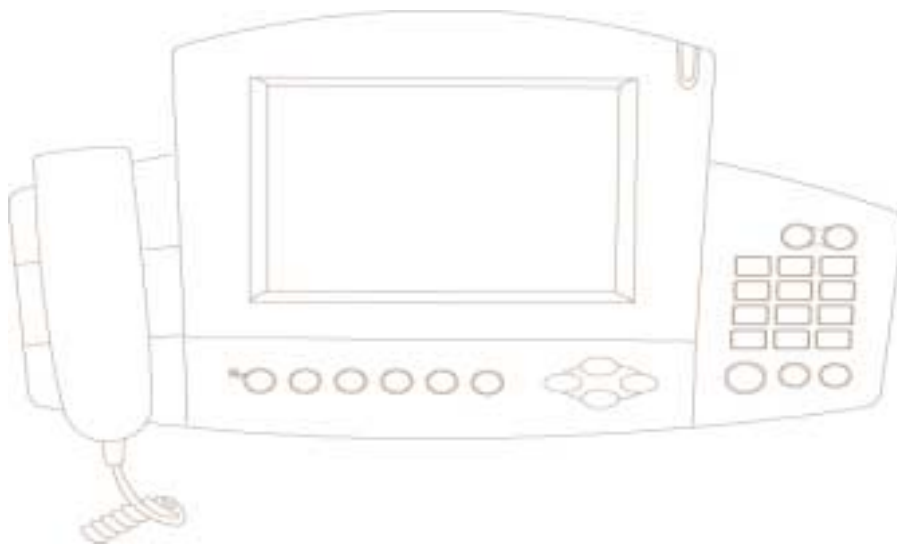


---

# Web I-Phone User Guide



Copyright© 2002 NETSYS Telecom All rights Reserved.

NETSYS Telecom assumes no responsibility for errors or omissions in this manual and information in the manual is subject to change without notice.

No part of this manual can be reproduced or transmitted in any form or by any means without pre-permission of NETSYS Telecom.

First edition

Date: May 18, 2002

## **FCC STATEMENT**

This equipment has been tested and found to comply with the limits for a Class B digital device, pursuant to Part 15 of the FCC Rules. These limits are designed to provide reasonable protection against harmful interference in a residential installation. This equipment generates, uses and can radiate radio frequency energy and, if not installed and used in accordance with the instructions, may cause harmful interference to radio communications. However, there is no guarantee that interference will not occur in a particular installation. If this equipment does cause harmful interference to radio or television reception, which can be determined by turning the equipment off and on, the user is encouraged to try to correct the interference by one or more of the following measure:

- Reorient or relocated the receiving antenna.
- Increase the separation between the equipment and receiver.
- Connect the equipment into an outlet on a circuit different from that to which the receiver is connected.
- Consult the dealer or an experienced radio/TV technician for help.
- Shielded cables must be used to comply with FCC regulations.

## **WARNING (PART 15,SECTION 15.21)**

Changes or modifications not expressly approved by the party responsible for compliance could void the user's authority to operate the equipment.

# Table of Contents

1	Overview of Web I-Phone.....	1-4
1.1	Web I-Phone Introduction.....	1-4
1.2	Main Function.....	1-4
1.3	Name and Function of Web ⓘ-Phone .....	1-4
1.3.1	Front of Web ⓘ-Phone.....	1-4
1.3.2	Function Key-Pad Button.....	1-4
1.3.3	Phone Key-Pad Buttons .....	1-5
1.3.4	Speaker and Microphone .....	1-5
1.3.5	Rear of Web ⓘ-Phone.....	1-5
1.3.6	Right of Web ⓘ-Phone.....	1-6
1.4	Product Specification .....	1-6
1.4.1	Hardware Specification.....	1-6
1.4.2	Software Specification .....	1-6
2	Web ⓘ-Phone Installation .....	2-7
2.1	Check the service .....	2-7
2.2	Confirming Contents.....	2-7
2.3	Safety Install Environments .....	2-8
2.4	Web ⓘ-Phone Installation .....	2-8
2.4.1	Connect the Handset to Web ⓘ-Phone.....	2-8
2.4.2	Connect the RJ-11 Phone Cable for telephone to Web ⓘ-Phone.....	2-8
2.4.3	Connect RJ-45 Ethernet cable to Web ⓘ-Phone ( LAN or ADSL User ) .....	2-9
2.4.4	Connect the Power Adapter .....	2-9
3	Beginning the Web ⓘ-Phone .....	3-10
3.1	Booting.....	3-10
3.1.1	Web ⓘ-Phone Rebooting .....	3-10
3.2	How to Use Main Screen.....	3-10
3.3	How to Set Up the Network.....	3-11
3.3.1	Network Setting – LAN User.....	3-11
3.3.2	Network Setting – ADSL(PPPoE) User.....	3-13
3.3.3	Network Setting – Modem User.....	3-14
3.4	User Setting.....	3-16
3.5	LCD Brightness, Volume Setting .....	3-17
3.6	Automatic Answering Machine Setting .....	3-17
3.7	Setting the Time.....	3-18
4	Use of Web ⓘ-Phone ( for Beginner ) .....	4-19
4.1	Use of Phone Screen .....	4-19
4.1.1	Phone Screen.....	4-19
4.1.2	Overview of general setting windows for phone.....	4-19
4.1.3	General Phone Call .....	4-20
4.1.4	Internet Phone Call .....	4-20
4.1.5	Answering the Phone .....	4-20
4.1.6	Use of Pen Memo.....	4-20
4.1.7	Directly Making a Calling from Directory.....	4-20

4.1.8	Use of Call History .....	4-21
4.2	Use of Internet Phone(VoIP) .....	4-21
4.2.1	VoIP Setting.....	4-21
4.2.2	Call through VoIP .....	4-23
4.3	Internet Browsing .....	4-24
4.3.1	Web Browser .....	4-24
4.3.2	Collection of Tool.....	4-24
4.3.3	How to Visit the Web Site .....	4-25
4.4	Use of Address Book.....	4-25
4.4.1	Address book screen .....	4-25
4.4.2	Addition .....	4-25
4.4.3	Editing.....	4-26
4.4.4	Deletion.....	4-26
4.4.5	Group .....	4-26
4.4.6	Classification.....	4-26
4.4.7	Searching .....	4-27
4.4.8	Speed Dial button.....	4-27
4.5	How to Use Automatic Answering .....	4-27
4.5.1	Setting of automatic answering function .....	4-27
4.5.2	Check the recorded messages from remote .....	4-28
4.5.3	Reproduction of recorded message .....	4-28
4.5.4	Deleting recorded message .....	4-28
4.6	How to use E-Mail.....	4-29
4.6.1	Setting E-Mail account.....	4-29
4.6.2	Mail editing .....	4-30
4.6.3	Mail checking.....	4-30
4.7	How to use Software Keyboard.....	4-31
5	Web ①-Phone Usage Tips for the Advanced User .....	5-32
5.1	Using PenMemo .....	5-32
5.1.1	Execution of PenMemo Program .....	5-32
5.1.2	Function of the PenMemo .....	5-32
5.2	Usage of SmartMedia.....	5-33
5.3	Viewing Image / Multimedia Files.....	5-33
5.4	Usage of WNET Shared Network File System .....	5-33
5.5	Usage of Network Shared Printer .....	5-36
5.6	About IPSM Directory .....	5-36
5.7	About Memory Usage.....	5-36
5.8	Cabinet(.cab) Application Install.....	5-37
5.9	Tips .....	5-37
6	Troubleshooting Guide .....	6-38
6.1	Things to know for making inquiry .....	6-38
6.2	Possible problem types and troubleshooting.....	6-38
6.2.1	Power .....	6-38
6.2.2	Network .....	6-38

## 1 Overview of Web I-Phone

### 1.1 Web I-Phone Introduction

Web ①-Phone is multi-functional advanced information phone device. Web ①-Phone has many useful functions such as public phone, VoIP(Voice over Internet Protocol), web browsing, e-mail, address book.

#### **Simultaneously phone call and web browsing**

Web ①-Phone users can explore the web during talking through the phone.

#### **Interoperability with other internet phone**

Because Web ①-Phone supports international standard H.323v2, it can talk to other H.323v2 VoIP terminals such as ip phone, PC etc. Also it has ordinary phone functions.

#### **Easier user interface**

The usage of Web ①-Phone is similar to that of ordinary phone. Also Web ①-Phone have user friendly GUI(Graphic User Interface) , so Web ①-Phone is very easier for beginner.

### 1.2 Main Function

Web ①-Phone main functions are

- Ordinary Phone
- VoIP(Voice over Internet Protocol)
- Internet Connection
- Address book managing function
- E-mail
- Digital answering machine

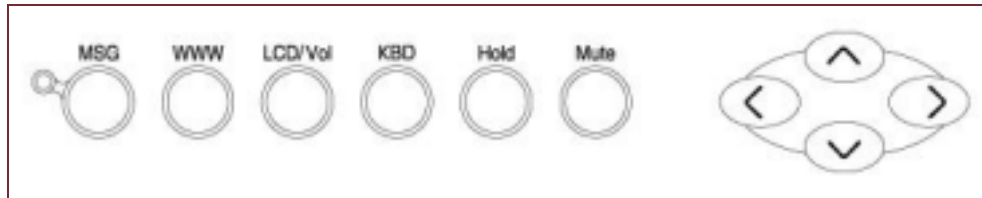
### 1.3 Name and Function of Web ①-Phone

#### 1.3.1 Front of Web ①-Phone

In the front of Web ①-Phone, there are 7.5 inch color LCD , dial button and function button performing various functions.



#### 1.3.2 Function Key-Pad Button



- [MSG] – executes E-Mail program
- [WWW] – carries out the execution function of Web browser
- [LCD/Vol] – controls contrast of LCD screen and volume of phone
- [KBD] – executes softkeyboard
- [Hold] – holds talking over the phone
- [Mute] – intercepts transmitting voice
- Arrow Buttons – for the control of LCD screen and volume

### 1.3.3 Phone Key-Pad Buttons




- Dial button is used for entering the number. This consists of 0~9 number button and \*, # button.
- [Answer] – sets automatic answering and records answering message
- [Play] – reproduces the message recorded during absence
- [Speaker] – used for calling or speaking over telephone
- [Flash] – used to transfer the call to another person
- [Redial] – used to redial the subscriber number calling most lately

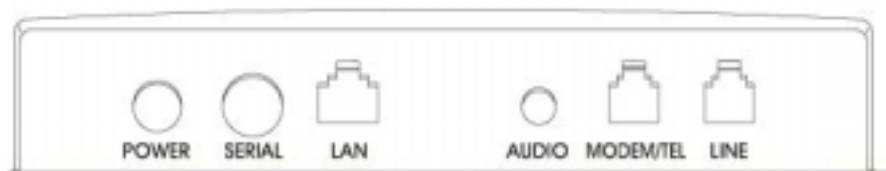
### 1.3.4 Speaker and Microphone

There is a speaker just under of the handset of Web -Phone , and there is a tiny hole shaped mike below speaker phone. Using these, you can make a call without lifting the handset.

- For hand free calling, press speaker phone button and press the phone number
- When the bell rings, press speaker phone button and speak
- If you want to speak on mike during speaking on handset, press the speaker phone button and put down the handset.

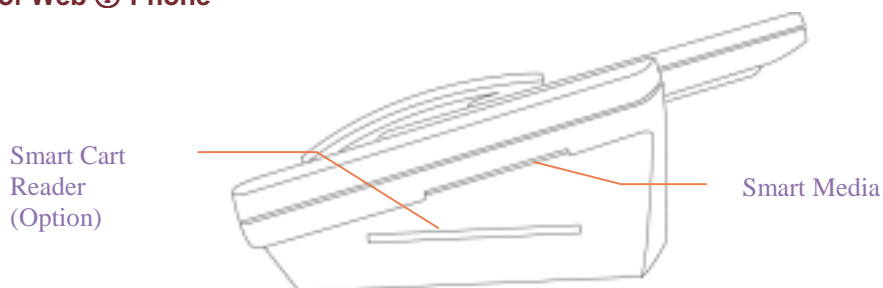
### 1.3.5 Rear of Web -Phone

There are the port connecting LAN cable, serial cable, audio output, modem and telephone Line in the rear of Web -Phone.



- **POWER** : the port connecting electricity-supplying adapter to Web i-Phone. Power adapter is 100~240 VAC free-volt.
- **SERIAL** : the port connecting serial cable
- **LAN** : the port connecting RJ-45 Ethernet interface
- **AUDIO** : the port for external speaker
- **MODEM/TEL** : the port connecting to another telephone
- **LINE** : the port connecting RJ-11 cable from phone outlet

### 1.3.6 Right of Web i-Phone



There are smart media device and smart card reader (option) in the right of Web i-Phone.

## 1.4 Product Specification

### 1.4.1 Hardware Specification

CPU	Intel StrongARM (SA-1110)
Memory	Flash : 16M ,SDRAM : 64M
Internet Access	LAN : 10 BaseT, 56Kbps Modem(Optional) : Internal Type, xDSL/Cable Modem : External Type
Display	7.5" Color STN LCD(640X480)
Audio	Stereo
I/O	Touch Screen, 1 Serial, Smart Media, 1 Earphone Jack, Smart Card Reader(Optional), IR Keyboard(Optional)
Caller ID	Type I, Type II
VoIP	H.323v2, VoIP Gateway(1ch)

### 1.4.2 Software Specification

Operating System	Microsoft Windows CE 3.0 for HPC Pro
Web Browser	Internet Explorer 4
E-Mail	Pocket Inbox
Media Player	Windows Media Player 6.4
VoIP	H.323 version 2
Application	Pocket Word, Address Book, Pen Memo, Software Keyboard, Smart Media

## 2 Web -Phone Installation

This chapter consists of the following contents

- Check the service
- Confirming contents
- Safety Install environment
- Installation

---

### 2.1 Check the service

Check PSTN Service

If user want to use Web -Phone as ordinary phone, Web -Phone must be installed where PSTN service is available. If you don't subscribe now, you should subscribe for a PSTN service.

Check Network Service


For access internet using Web -Phone, you can connect to one of these

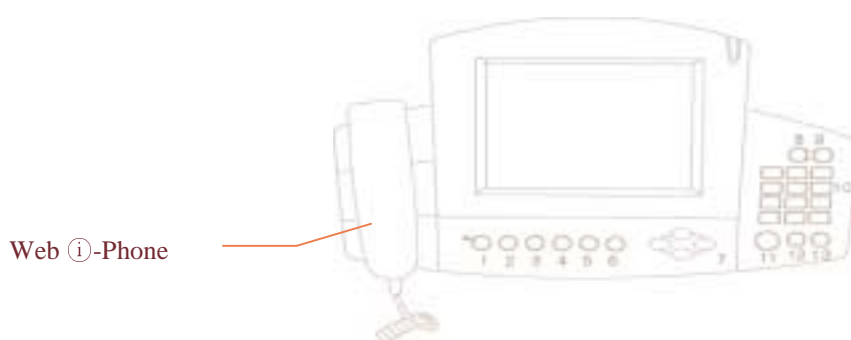
- LAN (Local Area Network) or Dedicated line
- ADSL
- Modem

---

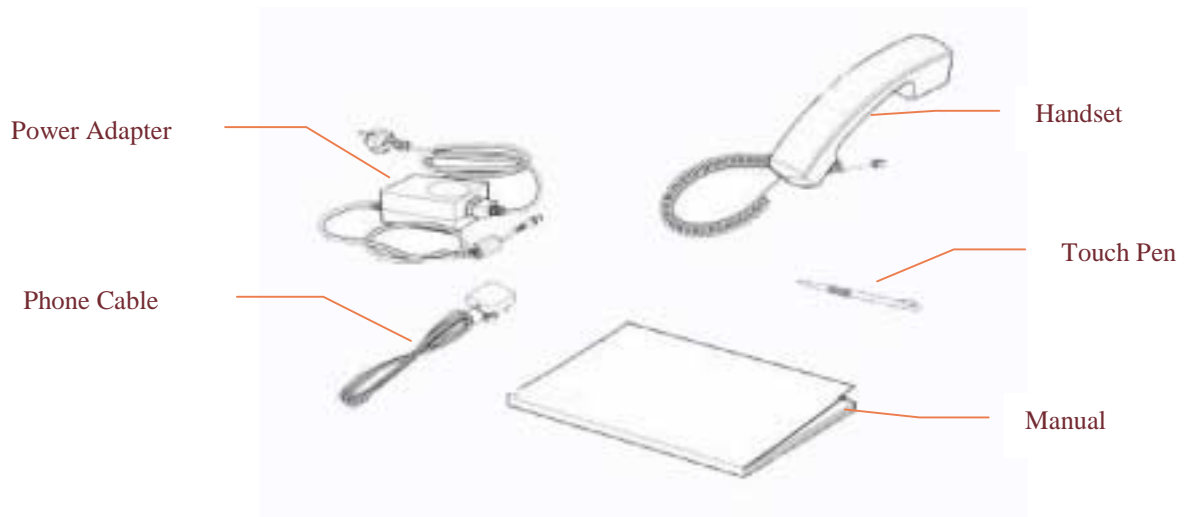
### 2.2 Confirming Contents

You must confirm that following contents is contained after buying Web -Phone package

1. One Web -Phone
2. One Hand Set
3. One DC Adapter
4. One User Guide
5. One Touch Pen
6. One RJ-11 Phone Cable
7. One RJ-45 Cable







---

## 2.3 Safety Install Environments

Web ①-Phone must be installed where is based on conditions explained below.

- Operation Temperature : 5°C~40°C
- Relative Humidity : 10% ~ 80% (Non-condensing)
- Consuming electricity : Under 20 Watts
- Power : AC 100V ~ 240V
- Regulation Frequency : 50 / 60Hz

---

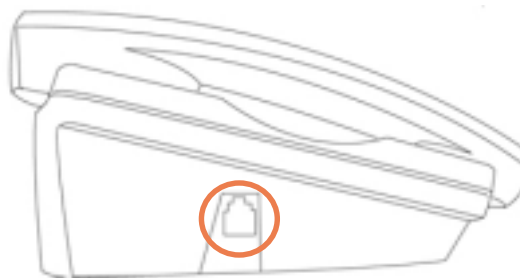
## 2.4 Web ①-Phone Installation

Unpack all contents of Web ①-Phone package

### 2.4.1 Connect the Handset to Web ①-Phone

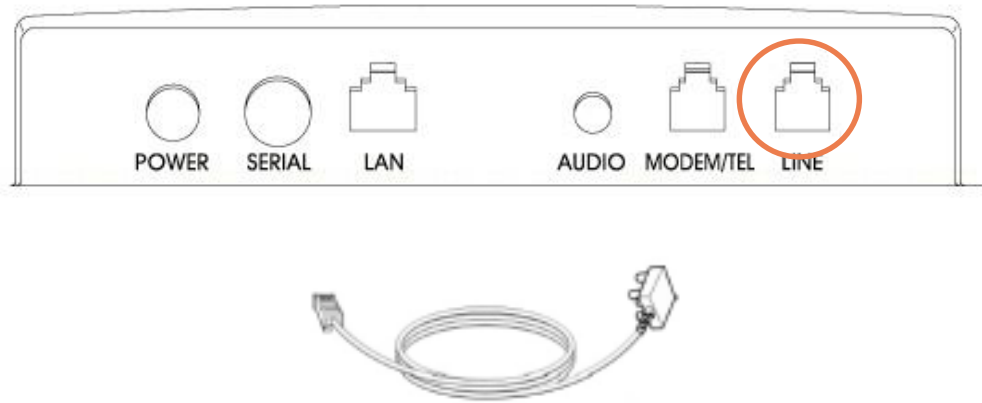
Web ①-Phone and Handset is packed separately.

Connect the handset jack to left part of Web ①-Phone as shown in the following figure.



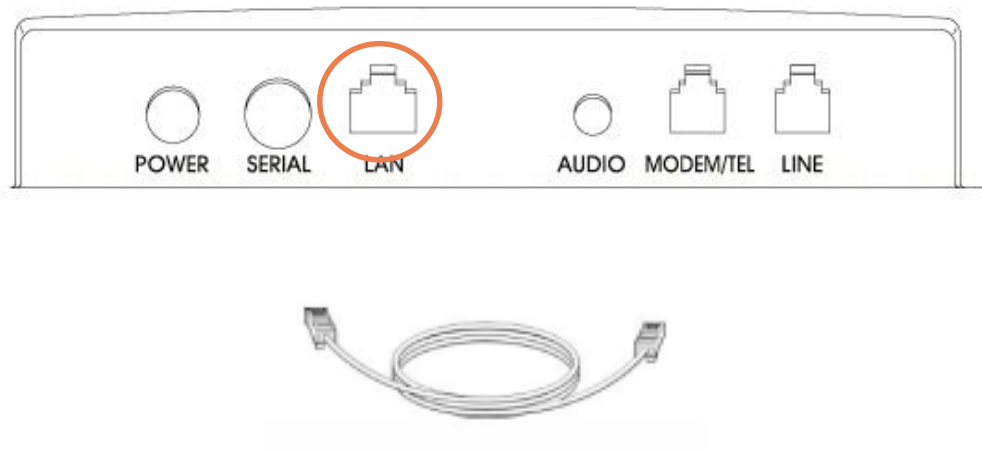
### 2.4.2 Connect the RJ-11 Phone Cable for telephone to Web ①-Phone

Connect the RJ-11 line for telephone to [Line] port in the rear of Web ①-Phone and to phone outlet. It depends on user's phone environments.



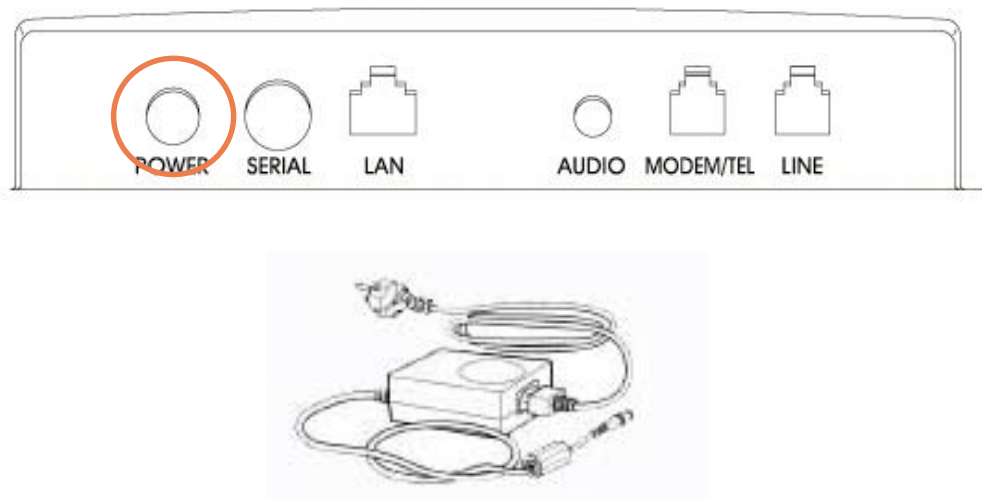
#### 2.4.3 Connect RJ-45 Ethernet cable to Web i-Phone ( LAN or ADSL User )

Connect the activated RJ-45 Ethernet cable (for LAN, ADSL) to [LAN] port in the rear of Web i-Phone.



#### 2.4.4 Connect the Power Adapter

Connect the Power Adapter to the AC Outlet and the [POWER] port of the rear of Web i-Phone. Then Web i-Phone start booting automatically.



## 3 Beginning the Web ①-Phone

In this section, you can learn about the basic usage of Web ①-Phone.

- Booting
- How to use Main Screen
- Setting up the Web ①-Phone

### 3.1 Booting

As soon as connecting the power adapter, Web ①-Phone start booting automatically.

After booting, the following main screen is appeared.



It means that Web ①-Phone is ready for use.

#### 3.1.1 Web ①-Phone Rebooting

In the Case of changing the set-up values or operating abnormally, user have to reboot Web ①-Phone.

How to reboot

- Quickly press 'Hold' button three times and click 'Yes' button in pop-up window
- Pull out the power adapter cable from Web ①-Phone, and connect it again

### 3.2 How to Use Main Screen

After booting, the following main screen is executed.



The main screen have the following five functions, and clicking the icon executes the program.

- INTERNET : executes Internet Explorer

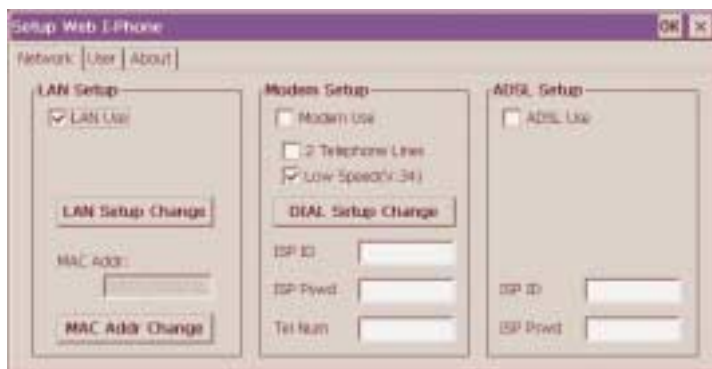
- **PHONE** : executes phone calling program for the use of general phone and internet phone.
- **ADDRESS** : executes directory
- **E-MAIL** : executes mail client for E-mail
- **SETTING** : changes the settings related to the network and user

Main Screen is always activated. So as clicking the bar in the bottom of screen, user can go to main screen at any time.

### 3.3 How to Set Up the Network

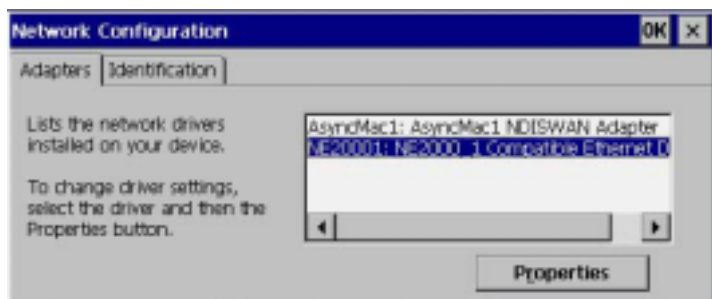
After first booting, for using internet phone and web browsing etc., user have to set up the network.

In the main screen, click 'Setting' icon in order to execute the Setting Screen.  
And set up Network Configuration and User Information in this screen.



#### 3.3.1 Network Setting – LAN User

Select the “LAN Use” check box.  
Click the “LAN Setup” button.

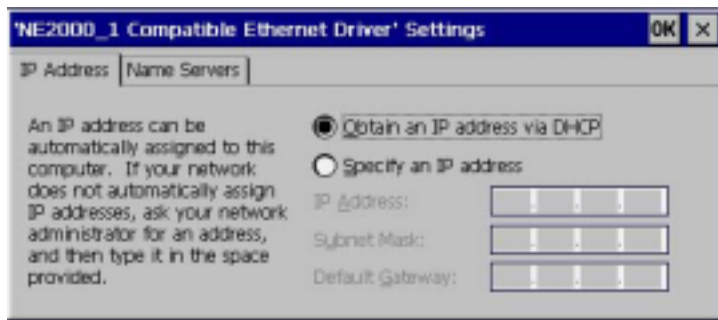


In the list box of 'Adapters' Tab., select 'NE2001: NE2001\_1 Compatible Ethernet Driver', and then press 'Properties' button.

Select 'IP Address' Tap.

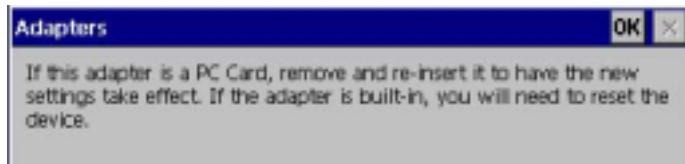
##### 3.3.1.1 DHCP User

If you use the DHCP, select 'Obtain an IP address via DHCP'. In this case, other settings are needless. (DHCP: Dynamic Host Configuration Protocol)



Click 'OK' button to close the window if 'NE2000\_1 Compatible Ethernet Driver'.

Click 'OK' button of the window of 'Adapter'.



Click 'OK' button to close the window of 'Network Configuration'.

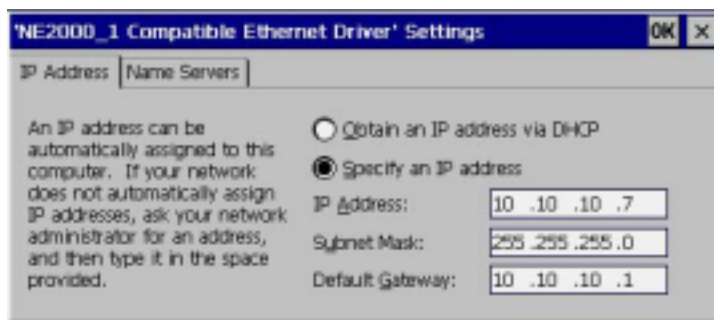
Caution ) For saving the changed network items in the Registry, it will take about 10 seconds.

After saving the changed network items in the Registry, in order to use the system under the application of new network, pull out the Adapter cable from main system, and connect it again for rebooting.

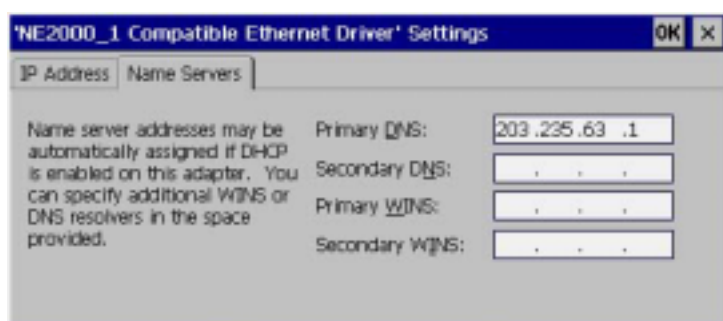
### 3.3.1.2 Allocated IP User

If you use the allocated IP address, select 'Specify an IP address'. In this case, input respective information according to user's network.

- Input the allocated IP address
- Input the allocated subnet mask
- Input the allocated gateway address

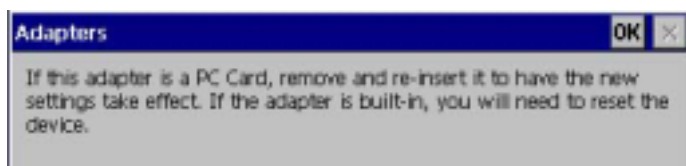


Select 'Name Servers' Tap, and enter the information of DNS (Domain Name Server) to be used. ( case DHCP , it is not needed )



Click 'OK' button to close the window if 'NE2000\_1 Compatible Ethernet Driver'.

Click 'OK' button of the window of 'Adapter'.



Click 'OK' button to close the window of 'Network Configuration'.

Caution ) For saving the changed network items in the Registry, it will take about 10 seconds.

After saving the changed network items in the Registry, in order to use the system under the application of new network, pull out the Adapter cable from main system, and connect it again for rebooting.

### 3.3.2 Network Setting – ADSL(PPPoE) User

In the main screen, click 'Setting' icon in order to execute the Setting Screen.

Select the 'ADSL Use' check box.

Enter the ID and Password in 'ADSL ID' and 'ADSL Pswd' text box of "ADSL Setup" window.



#### 3.3.2.1 How to connect to ISP using ADSL Modem

How to execute 'ADSL Dialer'.

1. Click 'start->programs->utilities->ADSL dial' and then the following window is executed.



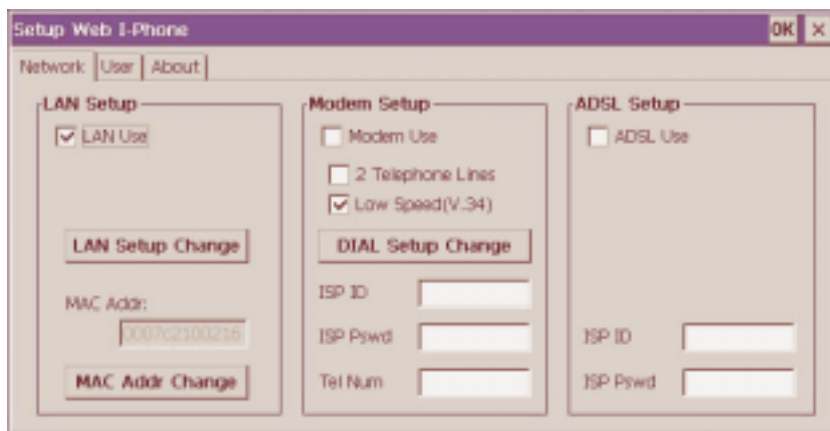
2. Enter the 'Username' , 'Password' and click the 'Connect' button.

3. Then system dials to ISP using ADSL Modem.

4. After connecting to ISP, the button captions are changed.

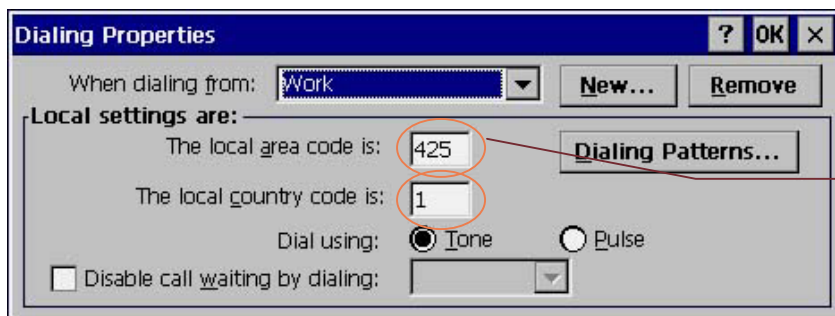
### 3.3.3 Network Setting – Modem User

In the main screen, click 'Setting' icon in order to execute the Setting Screen.  
Select 'Modem Use' check box.



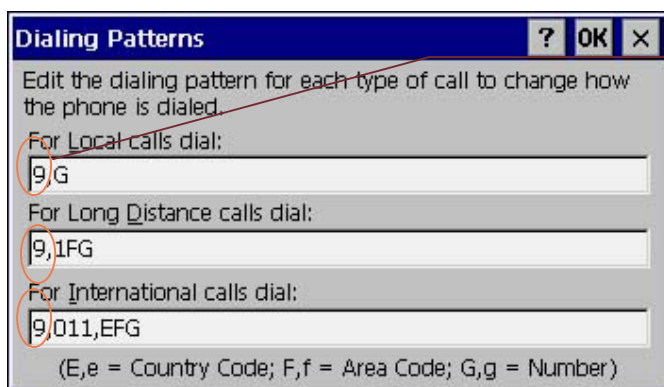
#### CASE 1

If you use Web i-Phone through the Keyphone or PBX in the office, click 'DIAL Setup Change' and select 'Work' at the 'When dialing from' setting



Enter local

If you have to change the dialing patterns, click 'Dialing Patterns' button and change the value according to your phone environment.



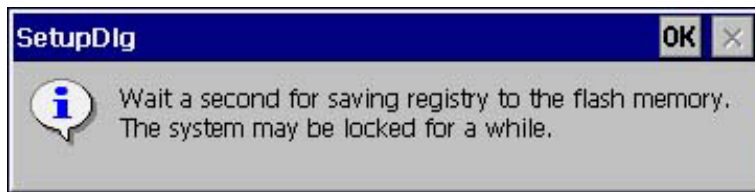
Prefix of your PBX or Key phone

If you use prefix '8,' please replace '9,' to '8,'

Click 'OK' button to close the window of Dialing Patterns.

Click 'OK' button to close the window of Dialing Properties.

Click 'OK' button to close the window of Setup Web I-Phone.

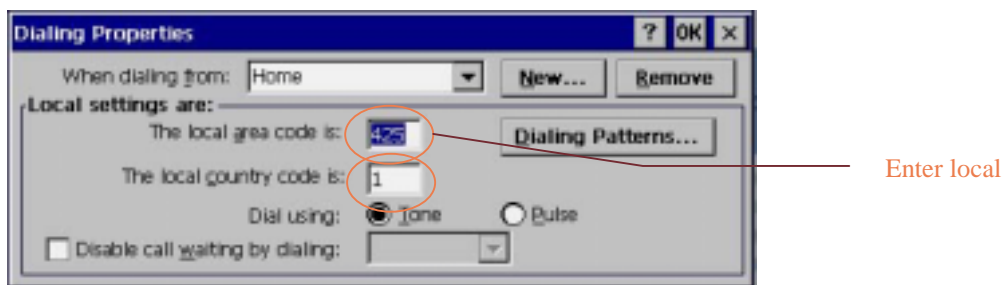


Click 'OK' to close the window of SetupDlg.

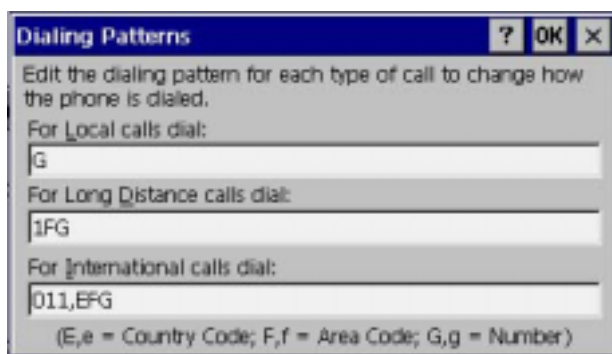
**Caution ) For saving the changed network items in the Registry, it will take about 10 seconds.**

## CASE 2

If you use Web i-Phone at home without the Keyphone or PBX, click click 'DIAL Setup Change' and select 'Home' at the 'When dialing from' setting



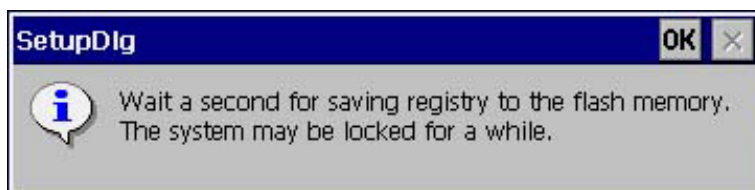
If you have to change the dialing patterns, click 'Dialing Patterns' button and change the value according to your phone environment.



Click 'OK' button to close the window of Dialing Patterns.

Click 'OK' button to close the window of Dialing Properties.

Click 'OK' button to close the window of Setup Web I-Phone.



Click 'OK' to close the window of SetupDlg.

**Caution ) For saving the changed network items in the Registry, it will take about 10 seconds.**

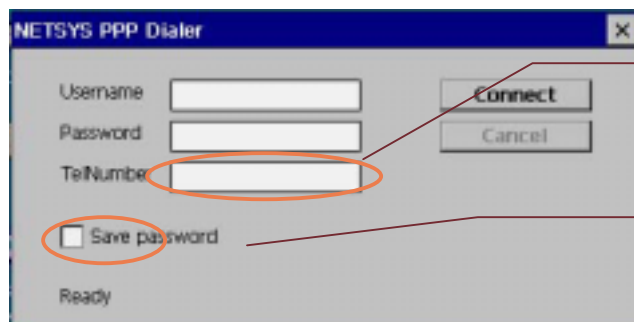
### 3.3.3.1 How to connect to ISP using MODEM

Check the line is rightly connected to 'MODEM/Tel' port.



How to execute 'PPP Dialer'.

1. Click 'start->programs->utilities->modem dial' and then the following window is executed.

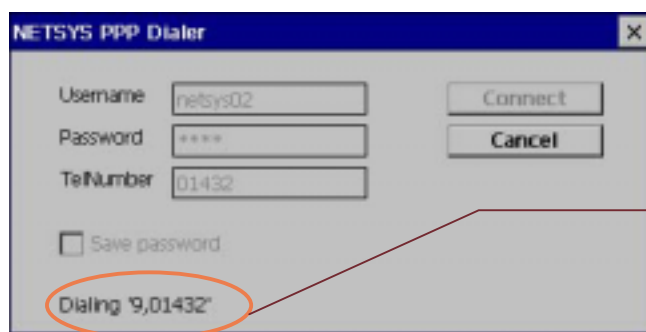


Please enter the number of ISP to connect.

If you want not to enter the password when connect to ISP later, please select this check box.

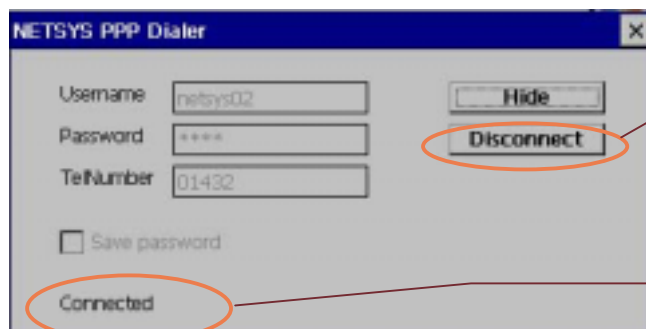
2. Enter the 'Username' , 'Password' , 'TelNumber' and click the 'Connect' button.

3. Then system dials to ISP using Modem.



It displays the number which the modem dials now. If this is not the number you want to dial, please refer to '3.3.3 Network Setting – Modem User' and change the value and retry to connect to ISP after saving.

4. After connecting to ISP, the button captions are changed.



Click this button to disconnect the modem from ISP

It displays the modem is connected to ISP.

5. Now you can use the internet through the modem.

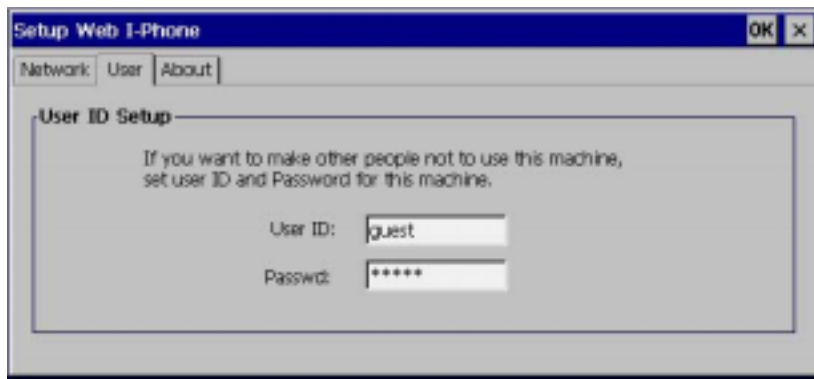
6. After using the modem, please click 'Disconnect' button to disconnect from ISP.

---

### 3.4 User Setting

Click 'Setting' icon in the main screen.

Select 'User' tab in 'Setting' screen.



Input the User ID, Password.

Click 'ok'.

Caution ) For saving the changed user informations in the Registry, it will take about 10 seconds.



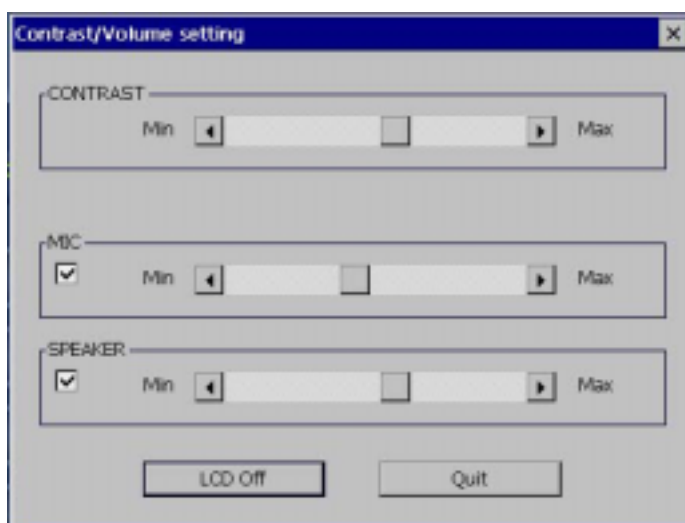
During booting the system, Web ①-Phone request User ID, Password input. Then an authorized user who know user ID, password can access the Web ①-Phone.

---

### 3.5 LCD Brightness, Volume Setting

How to control LCD brightness and volume

1. Press 'LCD/Vol' button.
2. Adjust LCD brightness, microphone, speaker volume using scroll bar by touching or using arrow button.
3. Close the window.




---

### 3.6 Automatic Answering Machine Setting

Press 'Answer' button on the top right and then the following window for automatic answering machine setting is executed.



Contents of Answer setting window

- Answer Mode : set automatic answer mode or not
- Ring Count : **Automatic answering function starts after it rings as many times as the number.**
- Password : password for checking the saved messages remotely
- Record : record the message for answering.
- Play : play the recorded message for answering
- Stop : stop to play the message
- Quit : close the windows

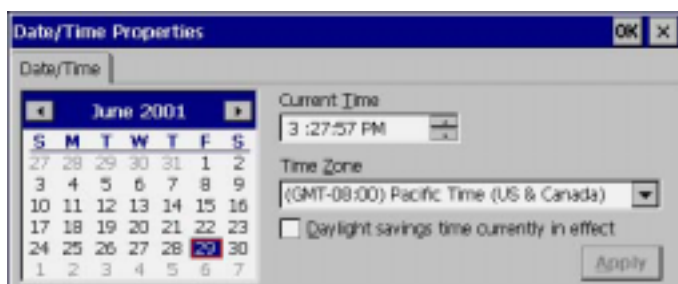
---

### 3.7 Setting the Time

Double click the present time on the right bottom of screen.

When time set up windows is appeared, set the following items.

- date
- time
- city



## 4 Use of Web ①-Phone ( for Beginner )

In this chapter you can know how to use Web ①-Phone.  
This chapter includes the following items.

- Use of Internet Phone
- Use of Telephone
- Use of Web Browser
- Use of Directory
- Use of Automatic Answering Machine
- Use of E-mail
- Use of Soft Keyboard

### 4.1 Use of Phone Screen

There are three methods to activate phone screen.

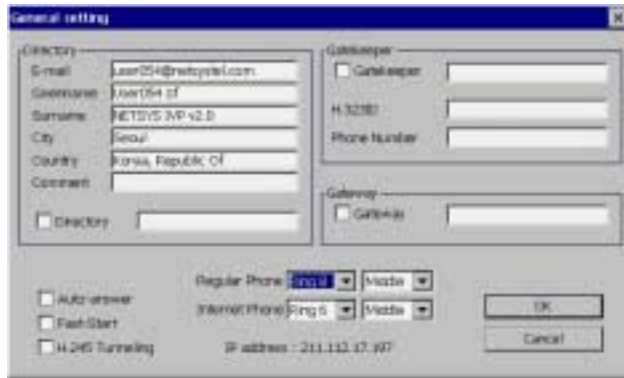
- Click 'Phone' button on main screen or 'Phone' on menu bar.
- Pick up the phone.
- Press 'Speaker' button.

#### 4.1.1 Phone Screen



- Display window : You can see the status of phone like the phone number, call time etc.
- The radio button for select phone or internet phone
- 'Clear', 'Clear All' button : If you want to delete last one number, click 'Clear' button. If you want to delete all number, click 'Clear All' button.
- 'Setting' button : Internet phone setting
- 'Pen Memo' button : Execute the Pen Memo program
- 'Call', 'Cancel' : Make a call and end
- 'Address Book' : Execute the 'Address Book'
- 'Call History' : Execute the 'Call History' window

#### 4.1.2 Overview of general setting windows for phone



- Directory Sector : user can connect to directory server after setting this sector
- Gatekeeper Sector : Gatekeeper ip address, H.323ID, Phone Number
- Gateway Sector : this is for using Gateway directly
- Auto-answer, Fast-Start, H.245 Tunneling Check Box : this is for internet phone setting
- Regular Phone : setting the bell sound and sound level of general phone
- Internet Phone : setting the bell sound and sound level of ordinary phone
- IP Address : display current IP address

#### 4.1.3 General Phone Call

- First, press 'Speaker' button or pick up the phone.
- Press keypad button like other general phone.

#### 4.1.4 Internet Phone Call

- Refer to 'Use of Internet Phone' section.

#### 4.1.5 Answering the Phone

- When it rings, pick up handset or press 'Speaker Phone' button to speak.

#### 4.1.6 Use of Pen Memo

Web ①-Phone have 'Pen Memo' program. During speaking, you can write and save the simple memo using the touch pen.

- Click 'Pen Memo' button.
- Using the 'Pen Memo' with touch pen.


#### 4.1.7 Directly Making a Calling from Directory

When you select the list box of directory, saved information about selected item is displayed.

Click the button displayed the number, then Web ①-Phone starts calling.



#### 4.1.8 Use of Call History

1. Click 'Call History' button.
2. You can see the latest call log.
3. If you want to call using this screen, select the items in list box and click 'Make a call' button, then Web -Phone starts calling



## 4.2 Use of Internet Phone(VoIP)

Web -Phone supports VoIP(Voice over Internet Protocol).

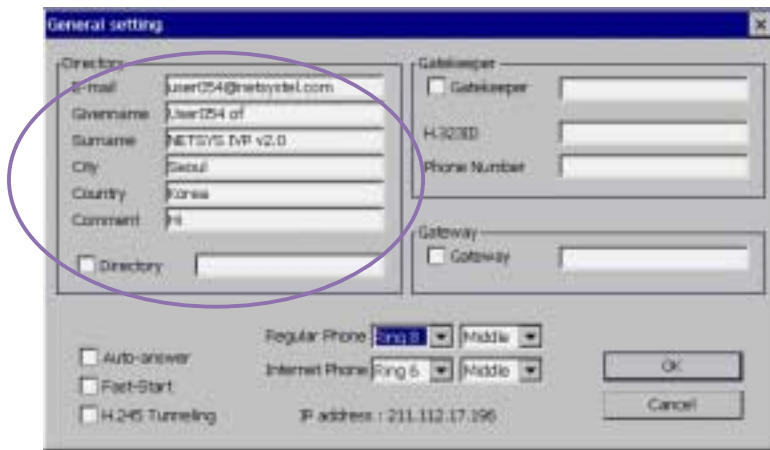
Two methods for using the internet phone.

1. Directly using IP address of H.323 terminals
2. Using Directory server or Gatekeeper or Gateway

### 4.2.1 VoIP Setting

#### 4.2.1.1 Case 1 : Using Directory Server

- Make Phone program run.
- Click 'Internet Phone' button.
- Click 'Setting' button on top light.



- Input my directory information.
  - E-mail : User's e-mail address
  - Given name
  - Surname
  - City
  - Country
  - Comment
- Select the directory check box.
- Close setting window.

#### 4.2.1.2 Case 2 : Using Gatekeeper

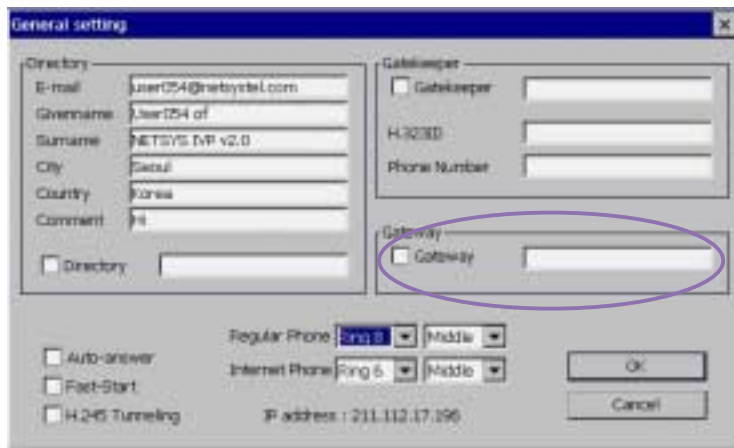
- Make Phone program run,
- Click 'Internet Phone' button.
- Click 'Setting' button on top light.



- Select the Gatekeeper check box.
- Input the IP Address of Gatekeeper.
- Input account information to register on Gatekeeper
  - H.323ID : registered ID for using the Gatekeeper
  - Phone Number : registered Phone Number for using Gatekeeper
- Close setting window.

#### 4.2.1.3 Case 3 : Using Gateway directly

- Make Phone program run,
- Click 'Internet Phone' button.
- Click 'Setting' button on top light.



- Select the Gateway check box.
- Input the IP Address of Gateway.
- Close setting window.

#### 4.2.2 Call through VoIP

Using Web -Phone, you can call to Web -Phone, IP-Phone, Netmeeting and H.323 compatible terminals. If you want to call to ordinary phone(PSTN) through VoIP using Web -Phone, it needs IP Gateway.

##### 4.2.2.1 Call to H.323 terminals (Web -Phone, IP-Phone, Netmeeting etc.)

Method 1. Using IP Address directly

- Click 'Internet Phone' button in the phone window.
- Input IP address of opposite H.323 terminals(Web -Phone, IP-Phone, Netmeeting etc.)



- Click 'Call' button.

Method 2. Using directory server or Gatekeeper


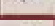

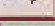


- Click 'Internet Phone' button in the phone window.
- Input the opposite terminal information on phone display depending on internet phone setting
  - Case of using directory server : input e-mail address of opposite H.323 terminals
  - Case of using Gatekeeper : input H.323 ID or phone number of opposite H.323 terminals
- Click 'Call' button.

Caution : Web -Phone uses G.723.1 and H.323v2. If the opposite terminals don't support this, you can't communicate with them.

##### 4.2.2.2 Call to Ordinary Phone





Icon	Function
	Move back to the previous web page you visited
	Move forward to the page you visited after current page
	Stop the current transfer
	Update and display the current web page
	Move to the set homepage
	Move to the set search site



### 4.3.3 How to Visit the Web Site

The methods of moving to new web site is like this:

1. Select the address input combo box in top of web browser or press 'Ctrl+G', then the address combo box is selected.
2. Enter the Homepage address and press 'Enter' key.
3. The entered page is transferred.

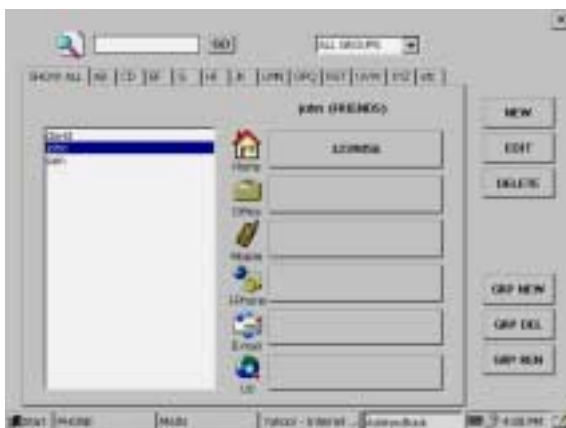


## 4.4 Use of Address Book

Web ①-Phone have address book. Using the address book, user manages phone number, e-mail address, etc. of other persons.

### 4.4.1 Address book screen

Click 'address book' button on main screen or on phone screen.



### 4.4.2 Addition

- Press [NEW] button to add a new address.
- Input information of name, group, phone number. (Refer to 12. How to use software keyboard.)
- If you want a new group, press [NEW GROUP] button. Then the new group item is to be added.
- When input is completed, press [SAVE] button for saving.
- The maximum number of addresses to be saved is 300, and there can't be duplicated items with one name

#### 4.4.3 Editing

- Select the item to be corrected first.
- Press [EDIT] button to get edit window appeared.
- After correction, press [SAVE] for saving.

#### 4.4.4 Deletion

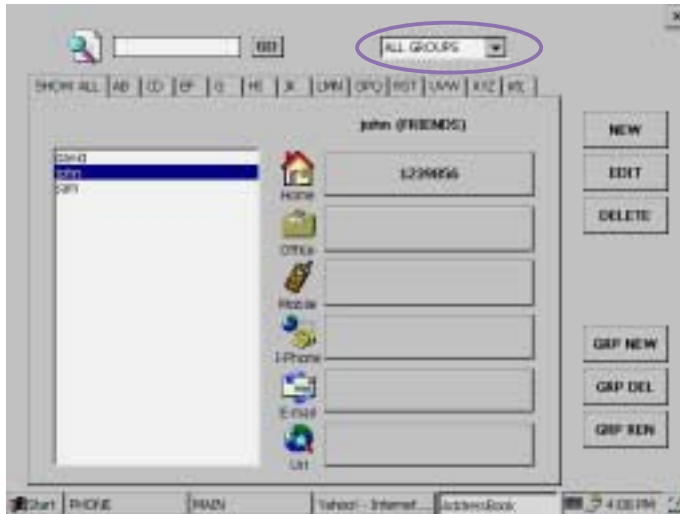
- Select the item to be deleted first.
- Press [DELETE] button to delete the item.

#### 4.4.5 Group

- Addition – Press [GRP NEW] button, and input the name of a new group. Up to 20 new groups can be added. As 'ALL GROUPS' and 'UNCATEGORIZED' are basically used in system, name correction and deletion on them are not possible.
- Deletion – Press [GRP DEL] button, and select the group to be deleted. All of address items belonging to the deleted group are moved to 'UNCATEGORIZED' group.
- Editing – Press [GRP REN] button, and select a group to be corrected. Correction is fulfilled with inputting a new name.

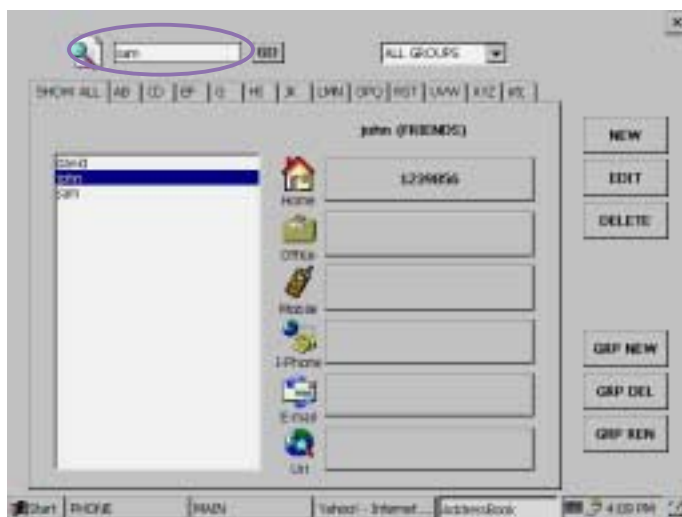
#### 4.4.6 Classification

- You can output each address item as a classified one by using the index of group and name.
- If you want an output of a group item, select the group item. If you want an output of all group items, select 'ALL GROUPS' item.
- If you want an output only an index, select index. In case of outputting all items apart from index, select 'SHOW ALL'.



#### 4.4.7 Searching

If you search for a particular address item, input the name in the Search input window of screen and press 'GO' button. For example, when you search for a word of 'john', search for all the words that includes 'john'. Search for in the presently selected group and index. In case of searching in all times, select 'ALL GROUPS' from group and 'SHOW ALL' from index.



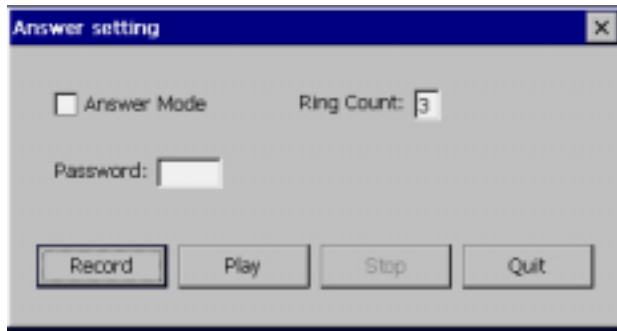
#### 4.4.8 Speed Dial button

- Phone number, mail address, home page address of each address item is output on buttons.
- Press each button, and then you can use the appropriate item at once.
- When you press phone number button, 'Phone Application' is appeared on screen and you can call to the phone number automatically.
- When you press E-Mail address button, mail editing program will be appeared.
- When you press Homepage button, Internet Explorer is executed and the appropriate homepage is to be connected at once.

### 4.5 How to Use Automatic Answering

Web ①-Phone answers the incoming call automatically when user is out.

#### 4.5.1 Setting of automatic answering function



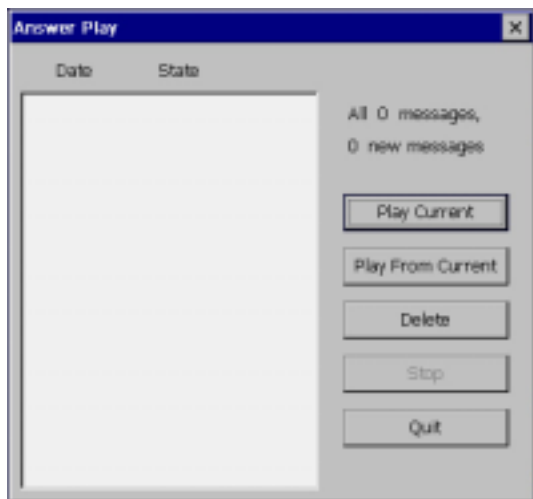
- First of all, press [ANSWER] button in the right part of main system to get 'Answering setting' screen appeared.
- Check 'Answer Mode' check box to set automatic answering function, and make empty 'Answer Mode' check box to remove the function.
- Input the number of ring count that you want in 'Ring Count' item. Automatic answering function starts after it rings as many times as the number.
- In order to record automatic answering message, press 'Record' button and record.
- Press 'Play' button to reproduce the recorded answering message.
- Press 'Save/Quit' button to save changed items and to finish setting.

#### 4.5.2 Check the recorded messages from remote

- Call to Web ⓘ-Phone from remote
- Hearing the new messages : when automatic answering mode is started, press '00' and password(4 numbers) and '1'.
- Hearing the all recorded messages : when automatic answering mode is started, press '00' and password(4 numbers) and '2'.

#### 4.5.3 Reproduction of recorded message

- Press [PLAY] button in the right part of main system to get 'Answer Play' screen executed.
- As there's no message information at present, only the names of saved files are output.
- After selecting wanted message, press 'Play Selected One' button. Then the message is reproduced.
- After selecting wanted message, press 'Play From Selected' button. Then all the following messages are reproduced.



#### 4.5.4 Deleting recorded message

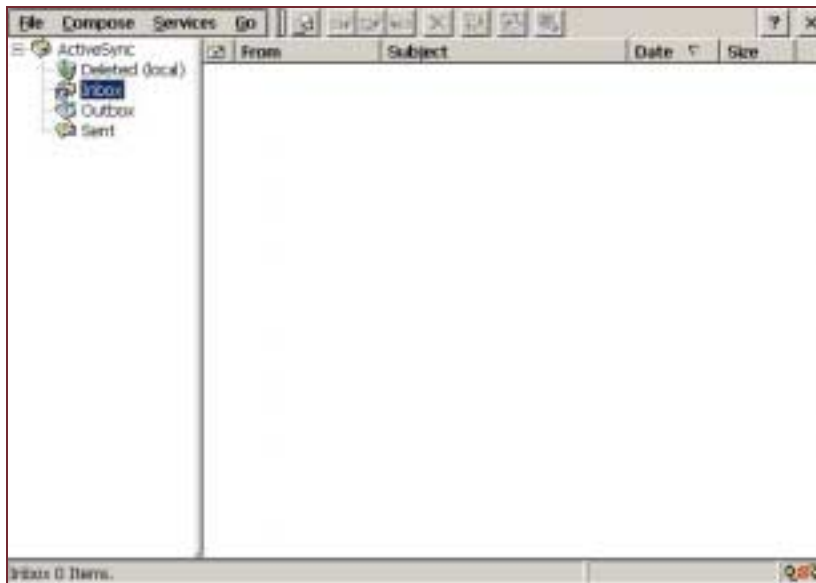
- Press [PLAY] button in the right part of main system to get 'Answer Play' screen executed.
- Select the saved file that user want to delete, and click the 'Delete' button.
- When confirm window is appeared, click 'OK'.

## 4.6 How to use E-Mail

This product uses Inbox that is included in Windows CE as an E-Mail program. You can execute E-MAIL in MAIN program or by performing Inbox icon of windows CE background screen.

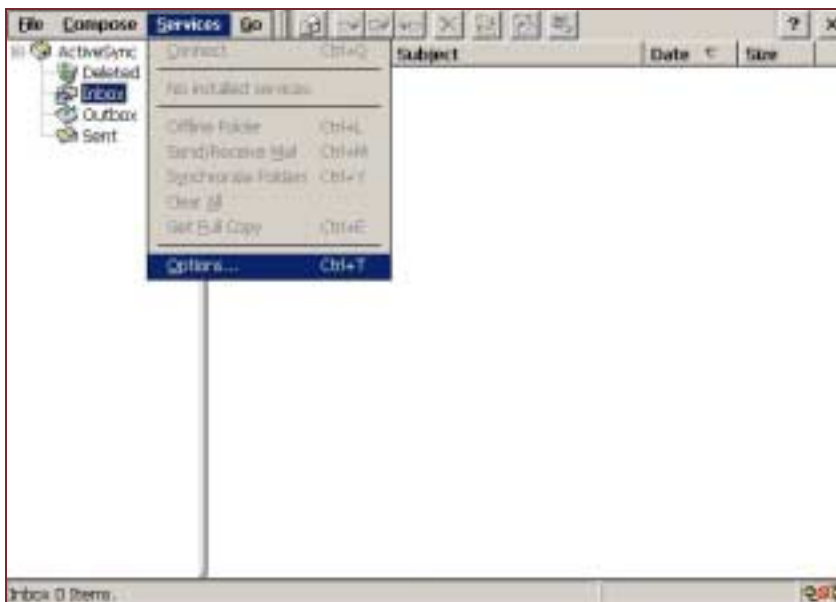
And you can do by pressing 'MSG' button on the main frame.

As the program is executed, the following is appeared.

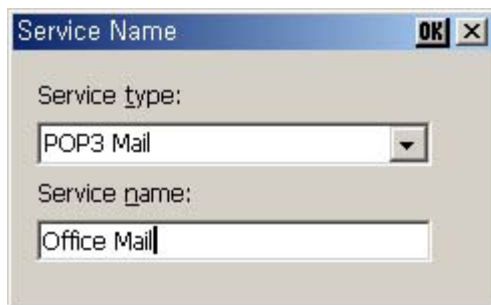
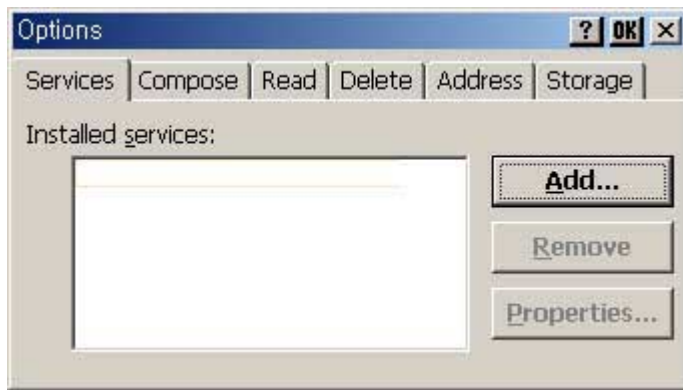


### 4.6.1 Setting E-Mail account

First you need to set E-Mail account to be used in Inbox mailing. Select 'Services -> Options' from the menu as the following screen is appeared.

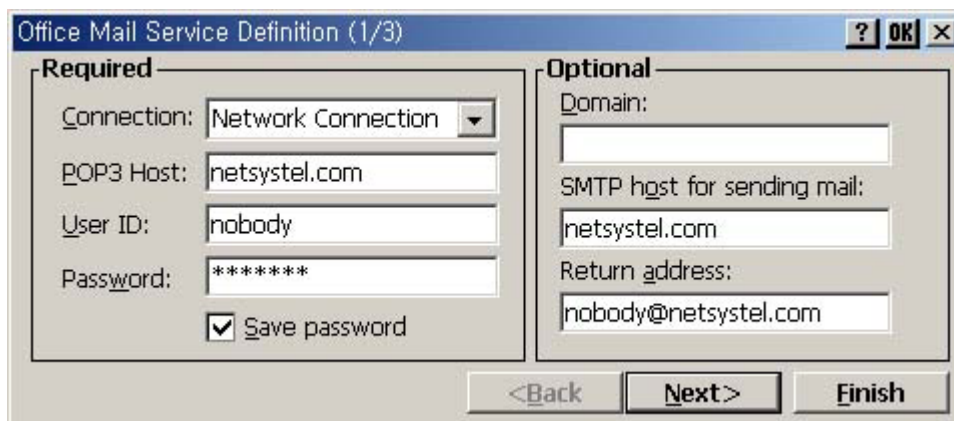


If you press [Add] button to add a new mail account the following screen is appeared. Assign a mail service type and a service name to be used in the screen. For example, assign POP3 to a service type so that you can read mail from the mail server offering POP3 service, and assign 'Office Mail' to the service name.



After inputting, press OK.

In the following screen, you should input a host address of mail server offering the mail service (that was set before), user's account, secret number, and the method of connection. Set 'Network Connection' in the Connection of the left top. 'POP3 Host' item assigns server address. The screen describes that a server named 'netsystel.com' has nobody as a user's account. After that, input user's secret number. In order to save the secret number, designate 'Save Password' check box. As input has been completed, press 'Finish' button.



With the process finished, mail setting is completed

#### 4.6.2 Mail editing

Select 'Compose -> New Message' from the menu to write a new message. (Use software keyboard for inputting contents.)

When editing is completed, select 'File -> Send' from the menu to send the message.

When you press 'Send' as before, the message may be saved in mail 'OutBox'. In such a case, press 'Services -> Send/Receive' from menu to actually send the message.

#### 4.6.3 Mail checking

Press 'Services -> Send/Receive' in the menu to read a mail  
Received mails are saved in 'Inbox'.

## 4.7 How to use Software Keyboard

To launch Software Keyboard on the screen, press "KBD" button on the front panel or click the small keyboard icon on the right-bottom part of the screen.



- Software Keyboard is used for enter the character.
- After executing the program what you input the character, you can input the character using the soft keyboard.
- If you touch 'CAP/Shift/Ctl' button, keyboard display is changed and then you can input extra characters.
- Software Keyboard supports "gestures". Pressing any key and drag to upper makes the capital character input (Same as you have pressed 'Shift' key). Dragging downwards inputs 'Enter' key, left inputs 'Backspace' key, right inputs 'Space' key.
- You can fix the "Shift" key and "au" key by double-clicking. If you clicked them once, it returns to the unpressed state after pressing other key. But if you double-clicked the "Shift" key or "au" key, you can use other keys continuously with the state of "Shift" key or "au" key is pressed.

Caution) Please be cautious not to let the 'Alt' key be kept pressed. ('Alt' key is sticky. If it is kept pressed, the phone dial pad can not work.)

If you want to remove software keyboard on screen, press 'KBD' button or double click the keyboard icon on the right bottom.



## 5 Web i-Phone Usage Tips for the Advanced User

This chapter explain Web i-Phone usage tips for the advanced user as follows.

- Using PenMemo
- Usage of SmartMedia
- Viewing Image / Multimedia Files
- Usage of WNET Shared Network File System
- Usage of Network Shared Printer
- About IPSM Directory
- About Memory Usage
- Cabinet(.cab)
- Cabinet(cap) Application Install
- Tips

### 5.1 Using PenMemo

Web i-Phone has PenMemo application for the simple ink memo input. While you are in a call, you can make memo with pen (or with your finger tips) on the screen. Slower writing to the screen, the better.

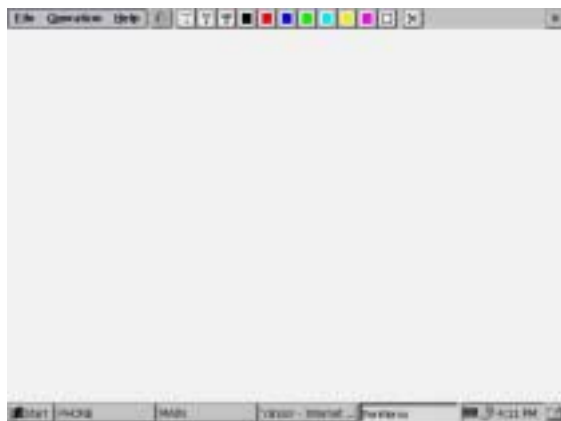
PenMemo saves stylus input with the x-y coordinates of the screen pixel. For each memo, you can save 16,384 pixel coordinates. And you can list out the recent 5 memo file paths saved

When there are so much information on the screen, window repainting can take times. Please keep the screen simple by saving or clearing screen.

The file extension of PenMemo file is ".nis" (Netsys Ink Stream).












#### 5.1.1 Execution of PenMemo Program

You can execute PenMeme program by pressing the button in the telephone screen



#### 5.1.2 Function of the PenMemo

Item	Icon	Function
Open		File open
Save as		File save
List Recent Files		List recent 5 files
Exit		Close the program
List Recent Files		
Line Width 1		Thin line

Line Width 2		Medium line
Line Width 3		Thick line
Black Color		
Red Color		
Blue Color		
Green Color		
Cyan Color		
Yellow Color		
Magenta Color		
Eraser		
Clear Screen		

## 5.2 Usage of SmartMedia

- You can use SmartMedia card as a secondary storage. There are two slots on the right side of the Web i-Phone. Upper slot is SmartMedia slot. Insert your SmartMedia card there with the metal side UP (be careful not to insert metal side down). Then you can see the "SmartMedia" directory (use Explorer) and you can use the directory as hard disk.
- You can use SmartMedia card as a secondary storage. There are two slots on the right side of the Web i-Phone. Upper slot is SmartMedia slot. Insert your SmartMedia card there with the metal side UP (be careful not to insert metal side down). Then you can see the "SmartMedia" directory (use Explorer) and you can use the directory as hard disk.
- If the "SmartMedia" directory is not made, please extract and re-insert.
- Web i-Phone supports 2 - 64 MBytes of SmartMedia cards. If you inserted unformatted SmartMedia card, a dialog box that asks you to format is pop-up. You can use SmartMedia cards after formatting.
- Web i-Phone formats SmartMedia card as FAT16 file system. It is compatible with smart card readers that is attached to PC (ex. Zio of Microtech). As FAT32 file system is used in PC, please format first on the Web i-Phone and use it.
- SmartMedia cards use NAND flash memory. So there can be bad-blocks and it can be increased by iterative usage. Web i-Phone uses ECC (Error Correction Code) to recover 1 bit errors for flash block.
- Be cautious not to touch the metal contact points of SmartMedia card and protect from static electricity by keeping inside the vinyl cover when not in use.

## 5.3 Viewing Image / Multimedia Files

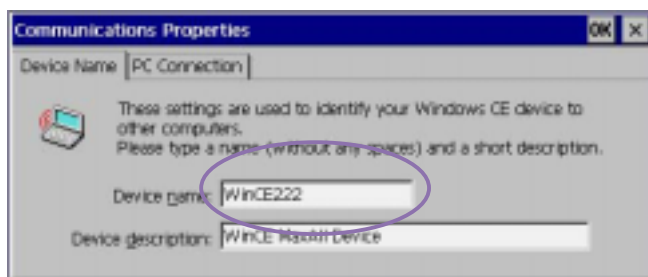
- To see the Image files (.jpg, .bmp, .gif, ...), use the "Open" item of "File" menu with Internet Explorer.
- This menu can be used when you would like to see the Multimedia files.
- For your information. Web i-Phone supports the multimedia features as following :  
Video Codec : MPEG-1, Cinepak, Microsoft MPEG-4 v2, v3, ISO MPEG-4, Windows Media Video v2, v7  
Audio Codec : MS and IMA ADPSM, G.711, MPEG-1 Layers 1 and 2, GSM 6.10, Windows Media Audio (WMA) v2, v7  
Media / File Format : AIFF, AU, WAV, MPEG-1, AVI, QuickTime (MOV)  
(currently MP3 and sipro ACELP.net audio codec are not supported with WindowsCE StrongArm platform)
- For the MP3 play, down and use X-Audio. (<http://www.xaudio.com/wince>)

## 5.4 Usage of WNET Shared Network File System

- Web i-Phone can access to "Shared Folder" of PC server connected via LAN (WNET protocol support).
- Connecting Sequence

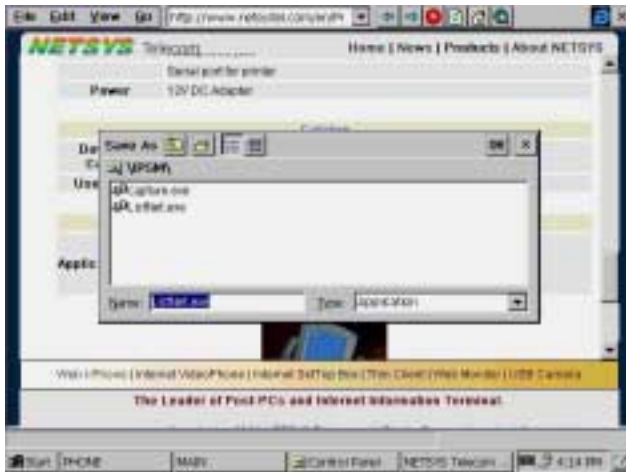
1. On the PC, make a directory "shared" as you do with normal networked environments.

2. If your Web i-Phone has no name (or default name of "WinCE"), change it. (Open the Control Panel "Communication" icon)



3. Download an application named "ListNet.exe" from NETSYS Telecom home page to Web i-Phone.





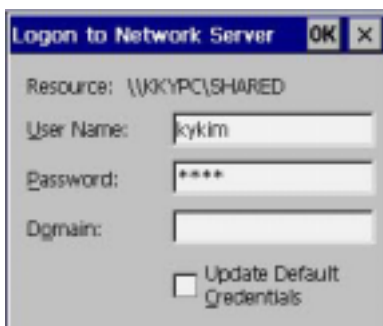
4. Run "ListNet.exe" on Web i-Phone, click on "Connect" button.



5. On the "Network Connection" dialog box, enter PC server name and shared directory name with the format of UNC (Universal Naming Convention) (like "\\server\_name\shared\_folder\_name") and enter the directory name to be used in Web i-Phone and press "OK" button.



6. If you have not been connected to this server, the "Log on to Network Server" dialog pops up. Enter the username and password registered to the PC server. If you check on the "Replace the default setting" checkbox, the username and password is saved to the Web i-Phone registry and you can auto log-on in next connection. For the security issue, we recommend you not to check this checkbox.



7. The shared folder is created in "Network" directory with the name you specified. Now you can access the shared folders on the PC server as it is in Web i-Phone local folders.



8. You can access each remote shared file directly through UNC (Universal Naming Convention) without ListNet.exe. The format is "\\server\_name\shared\_folder\_name\path\file\_name". Test with Address combo box of Explorer.

---

## 5.5 Usage of Network Shared Printer

- Web i-Phone can print to "Shared Printer" connected via LAN.
- Connecting Sequence
  1. When the printer is connected to PC server, make it be "shared" as you do in normal networked environments.
  2. To check if Web i-Phone can share the printer on the network, refer to above "Usage of WNET Shared Network File System" sequence and try to connect with "ListNet.exe" application.
  3. On each applications like Pocket Word or Internet Explorer, print a document with "File" menu "Print" item.
  4. When the "Print" dialog pops up, choose "Network" on the "Ports" combo and input the printer name with UNC format ("\\server\_name\shared\_printer\_name") on the "Network" combo. Click "OK" to start printing.

---

## 5.6 About IPSM Directory

- IPSM directory is the file system for the built-in flash memory. Data saved on this directory is not erased even if you turn off the system power.
- NETSYS Telecom will provide add-on applications to be downloaded and saved to this directory. Address Book and Answering machine data is also saved to this directory. Please let about 300 KBytes of unused spaces remain to this directory.

---

## 5.7 About Memory Usage

1. Web i-Phone is an embedded system that runs all the program memory on the system DRAM. (It is different with PC that swaps memory to hard disk). So if you launch too many applications, system memory shortage can make the system slower. Closing the applications that you have finished using and making as much memory be spared is good for the system response time.
  2. Windows CE system divides the DRAM to "storage memory" and "program memory". Storage memory is used for the object store and file system. Program memory is used for run-time program execution. You can control the size of each memory with Control Panel "System" setting "Memory" tab. You can increase the storage memory with moving the slide to the right and increase the program memory with move to the left. You have to press the "OK" button to the setting starts to work. Set the memory configuration according to your pattern of application usage.
  3. While playing large multimedia files, there is some case that some buttons or background is not seen. This is because of program memory shortage and please close other applications to extend usable memory size.
- When there is extreme program memory shortage while playing multimedia file, there can be some rare case of the player application would not respond to the user input. In this case you can kill the application by

pressing "Ctrl" + "Alt" + "<" (Backspace)" keys with Software Keyboard and select the applicaiton to kill. After this, don't forget to confirm the "Alt" key not kept pressed.

---

## 5.8 Cabinet(.cab) Application Install

1. To install additional application made by Cabinet file (.cab), download the Cabinet file (.cab) to the directory "\Windows\AppMgr\Install" and go to "\Windows" directory and run "wceload.exe".
  2. We do not recommend you to install an application that is not certified by NETSYS Telecom. It can damage the system.
- For the information about the installable applications to Web i-Phone, please refer the NETSYS Telecom web site.

---

## 5.9 Tips

- When you are watching a movie in the full screen mode with Media Player, the window size goes back to the original size when the play ends. If you would like to go back to original window size while full screen movie is playing, launch the Software Keyboard by pressing the "KBD" button in the front panel and press 'ESC' key.
- To save registry, close the Control Panel main window. Registry is saved to flash through IPSM (Intel Persistent Storage Management) driver and it may take about 10 seconds. Although Web i-Phone is the phone that power off is not needed, if you have to power off or reboot, you have to save registry to reserve the system setting value through rebooting.

## 6 Troubleshooting Guide

- Things to know for making inquiry
- Possible problem types
- Problem and troubleshooting

### 6.1 Things to know for making inquiry

If you have unsolvable problems, please call to seller and get professional services.  
Before making a inquiry, please prepare the following informations.

- Product model :
- Product serial number :
- Phone number of service center or seller
- Buying date
- Software version and hardware configuration
- Memo about what is problem
- Memo that user have done to solve the problem

### 6.2 Possible problem types and troubleshooting

#### 6.2.1 Power

Frequently question about power is following :

- User connect the power code, but Web ⓘ-Phone can't boot.

When above problem is happened, please check the followings.

- Check the power interface.
- Pull out the adapter and connect adapter to power port.

In case you don't solve the problem, please pull out the adapter and call to service center or seller.

#### 6.2.2 Network

Frequently question about network is following :

- User cannot use the network and internet.

When above problem is happened, please check the followings.

- Check the all cables for connect to Web ⓘ-Phone.
- Check the network configuration.
- Check the IP Address setting.

In case you don't solve the problem, please pull out the adapter and call to service center or seller.

#### 6.2.3 Warning

This device complies with part 15 of the FCC Rules. Operation is subject to the following two conditions: (1) This device may not cause harmful interference, and (2) this device must accept any interference received, including interference that may cause undesired operation.