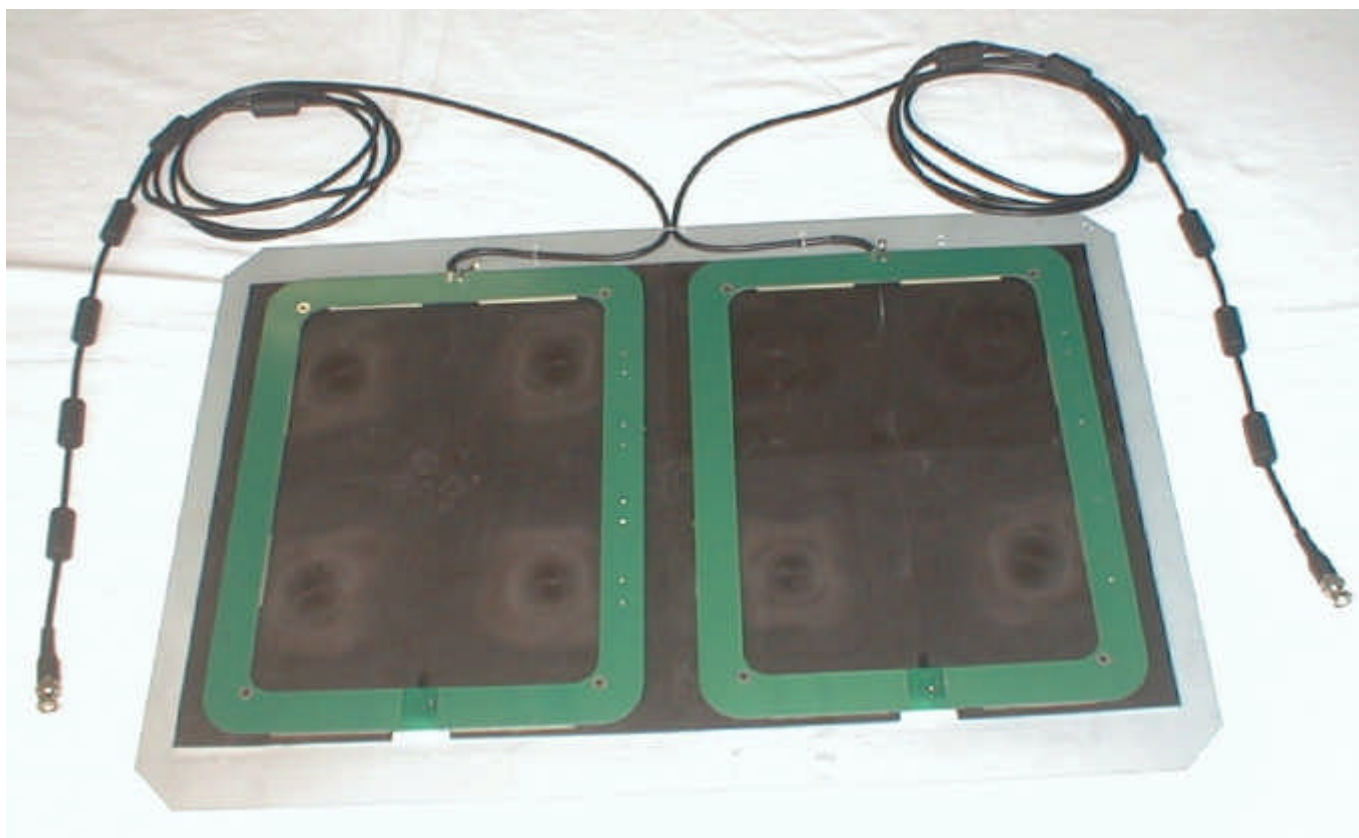


1 INTERNAL PHOTOS OF TESTED EUT

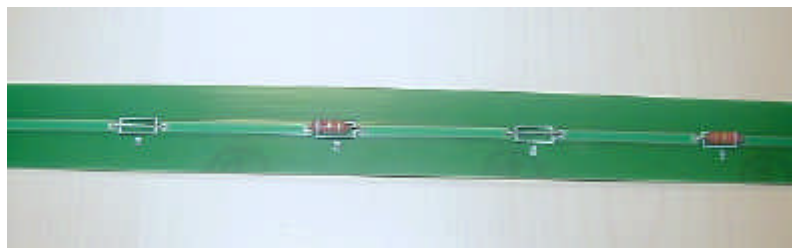
1.1 L-SA1 Antenna



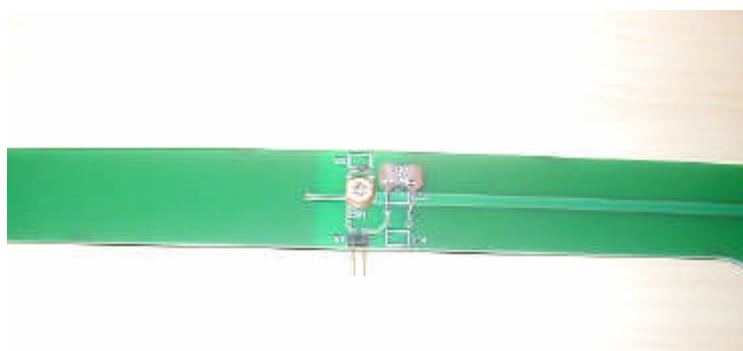
Internal view, cover removed



Internal view of one antenna, ferrite removed, component side



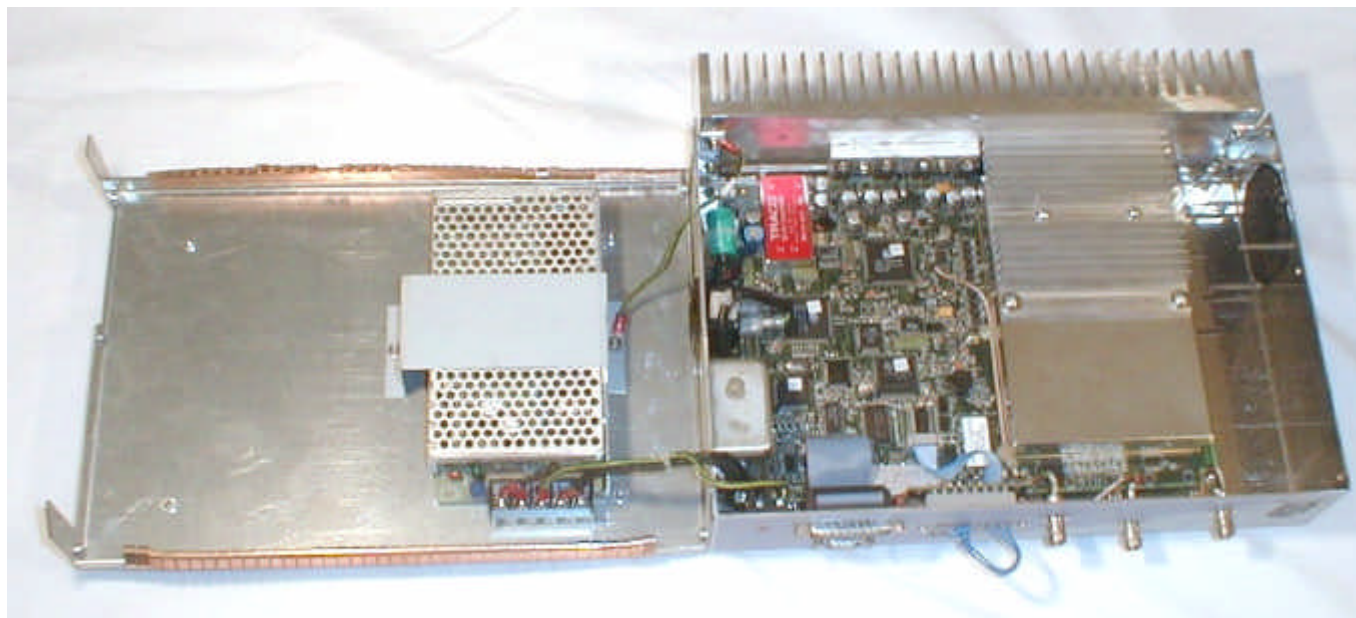
Component side, detail view



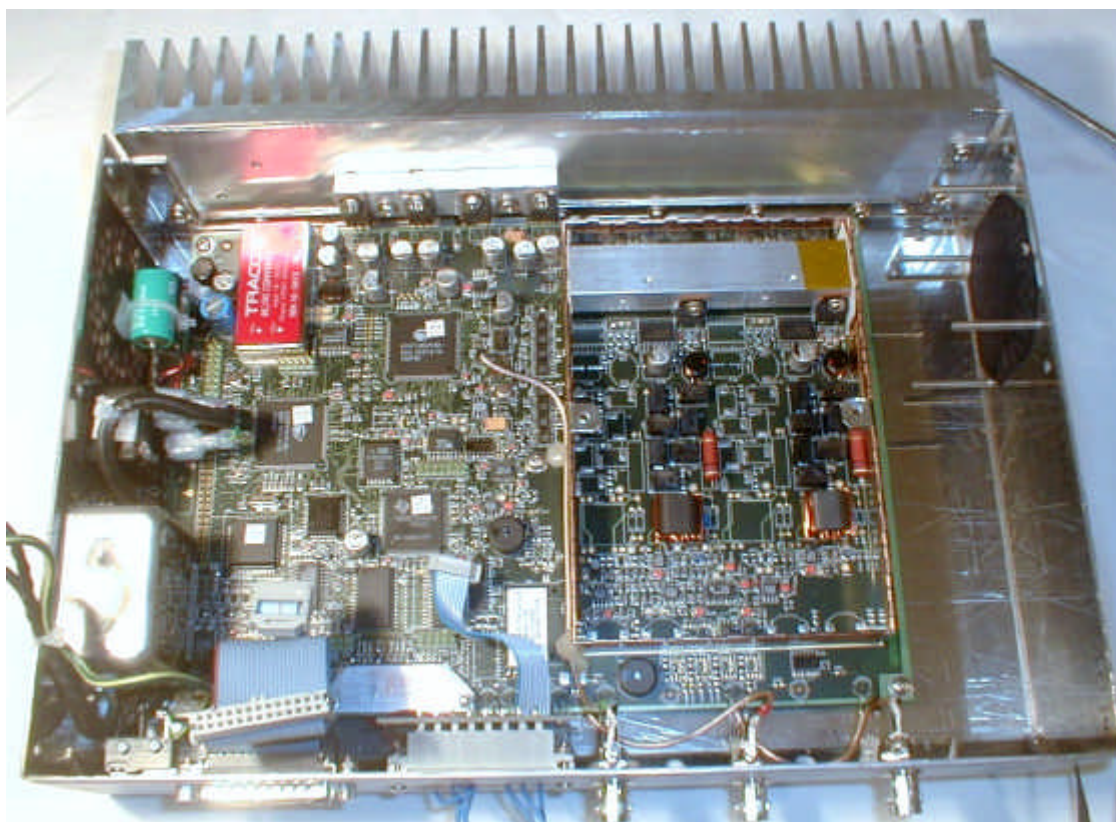
Component side, detail view

2 INTERNAL PHOTOS OF L-L100

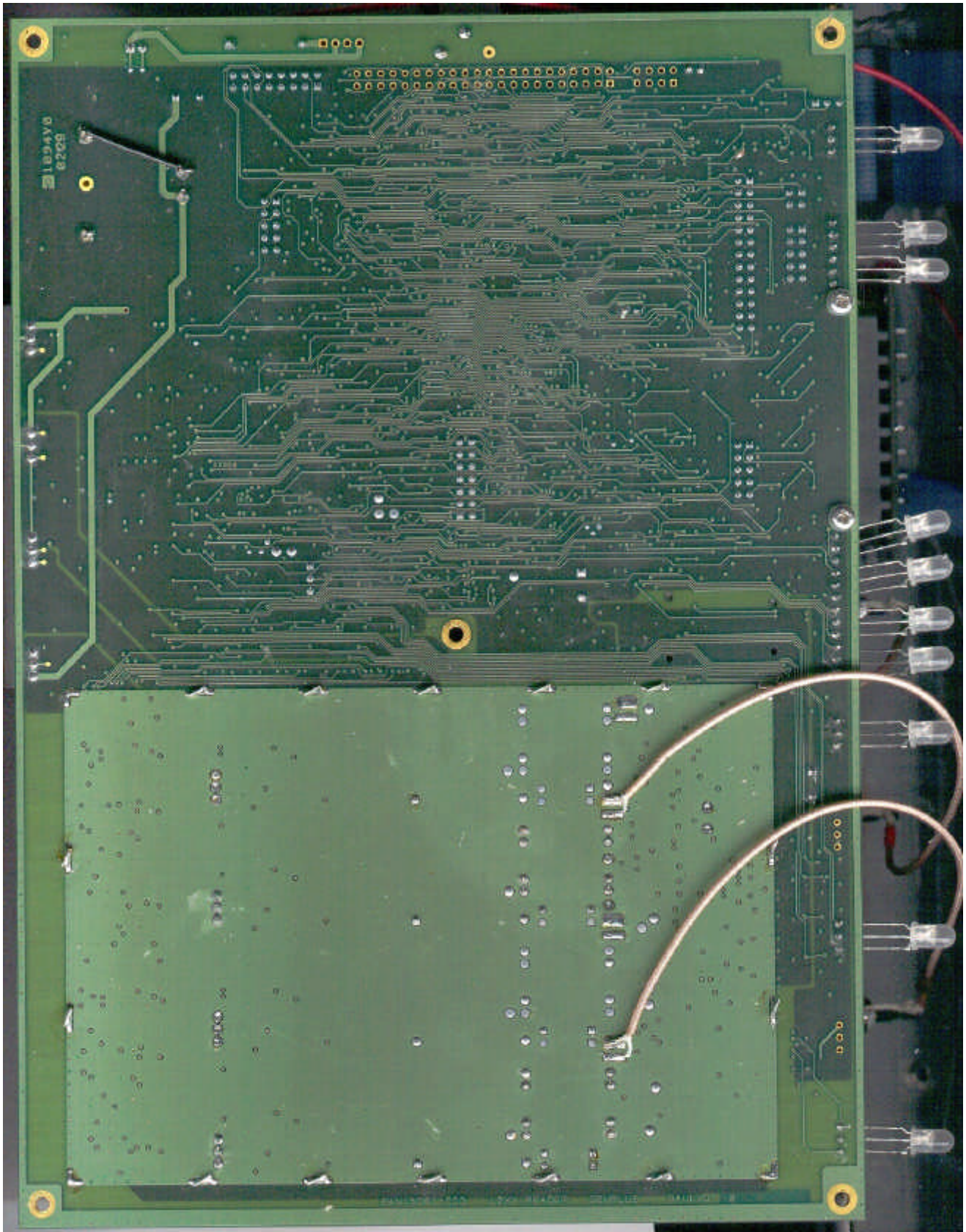
2.1 Internal photo of L-L100



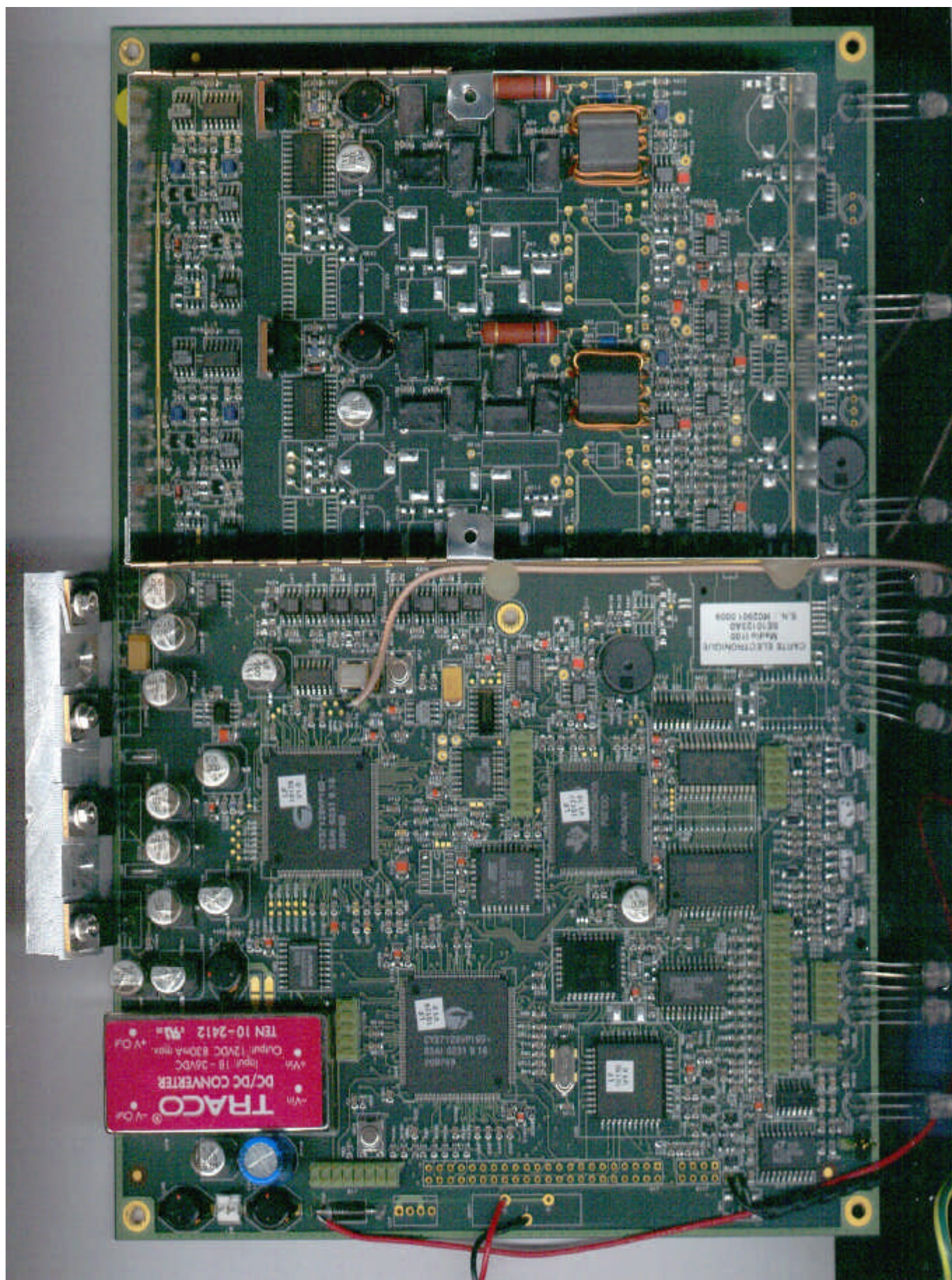
L-L100 cover removed



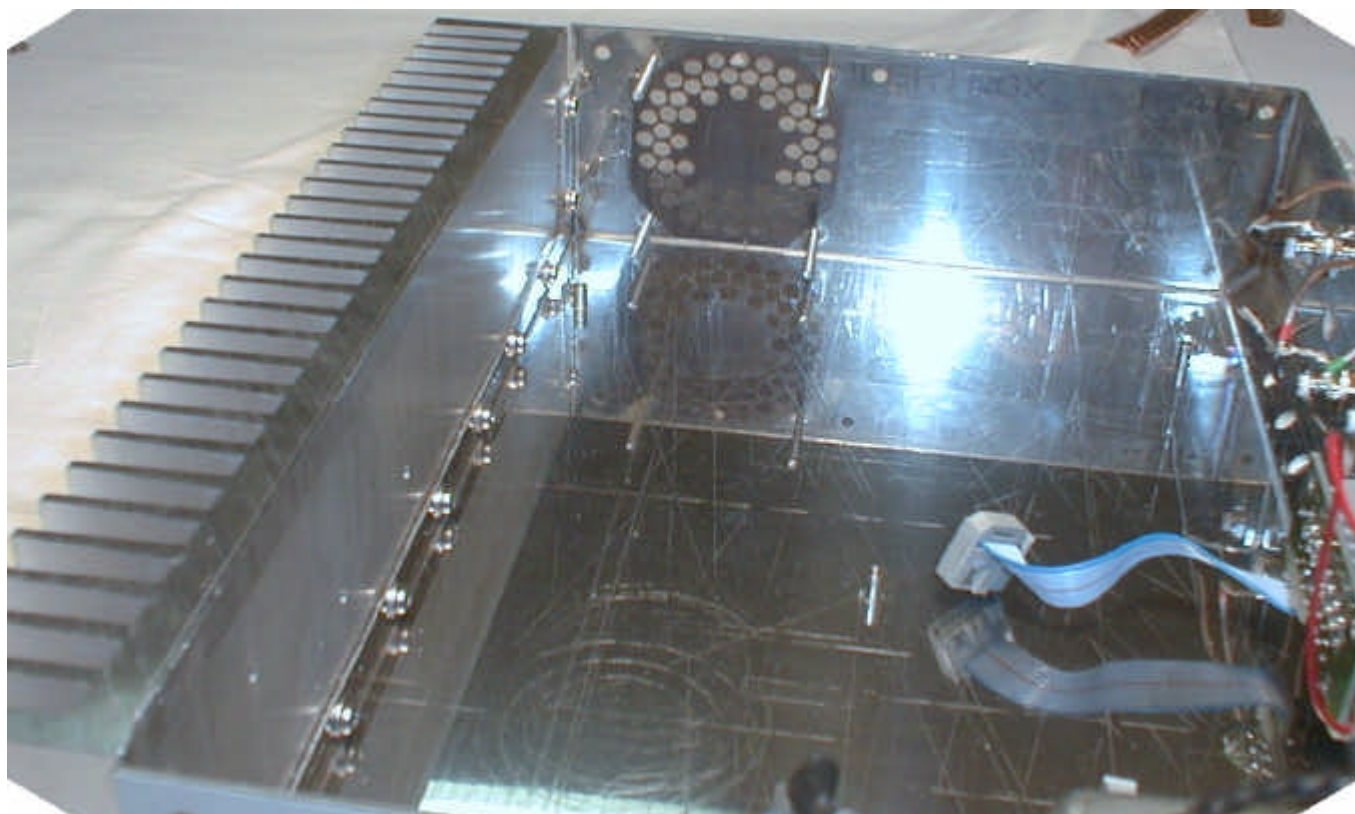
L-L100 inside, inside cover removed



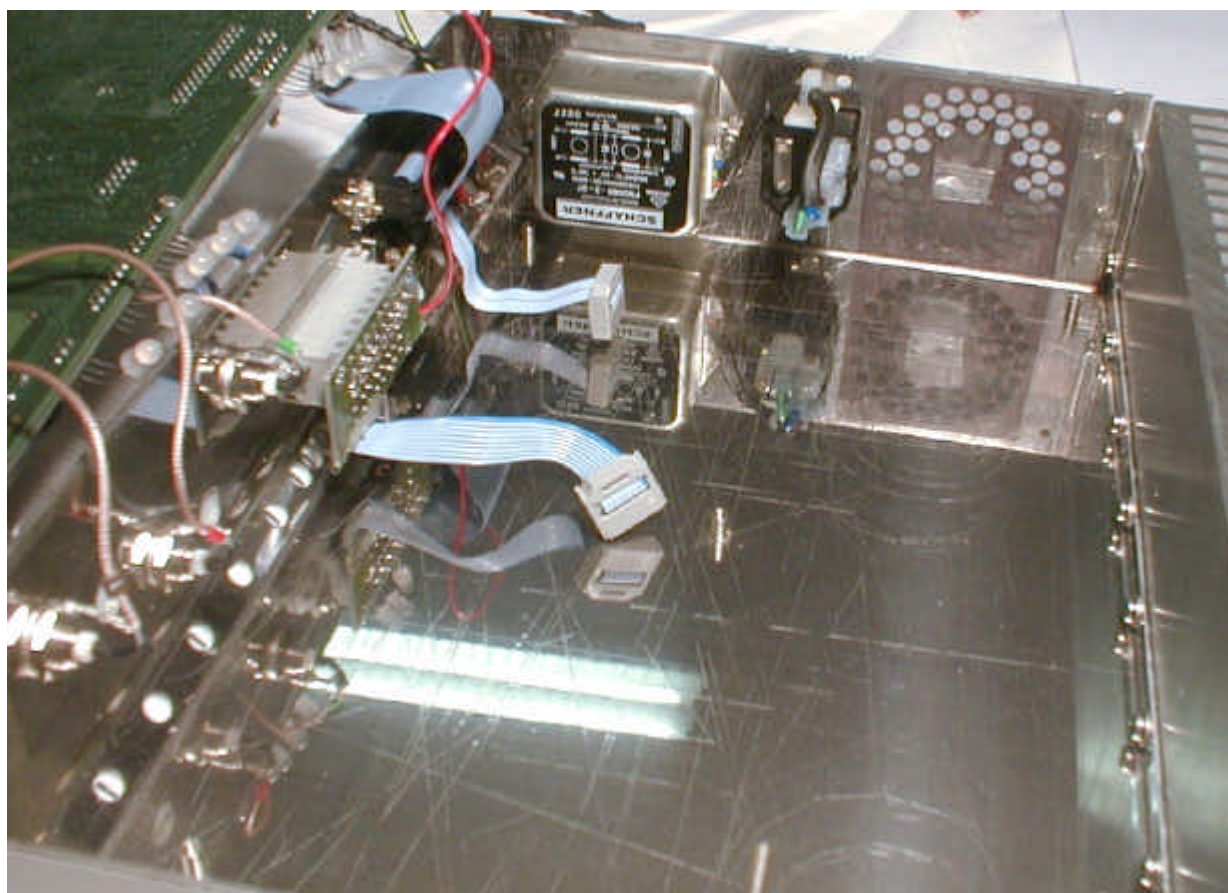
PCB of L-L100, foil view



PCB of L-L100, components side

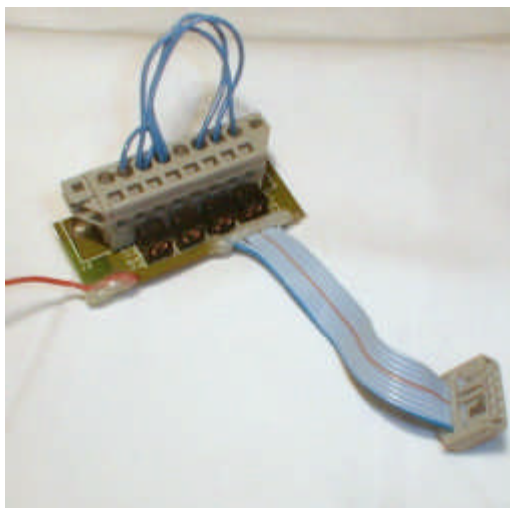


L-L100, without board, Detail view, left face

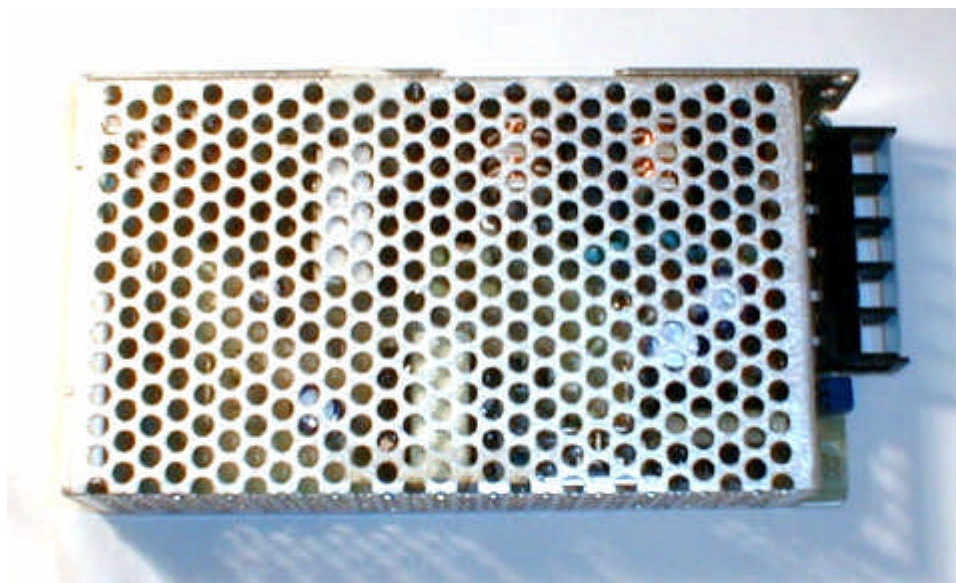


Detail view, right face

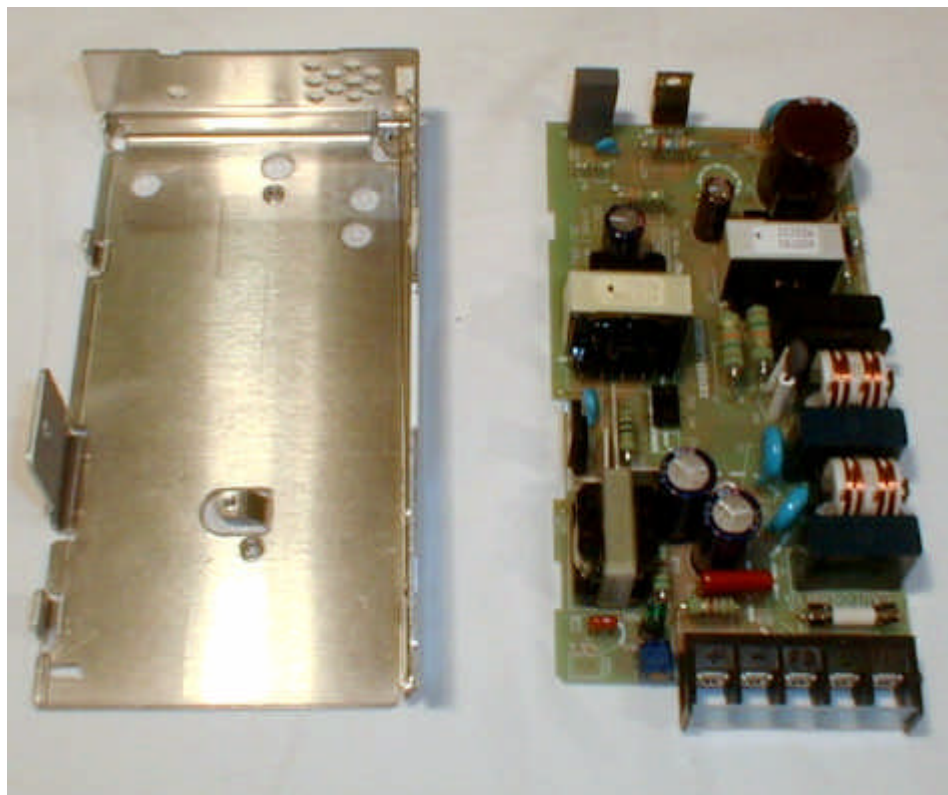
2.2 I/O board



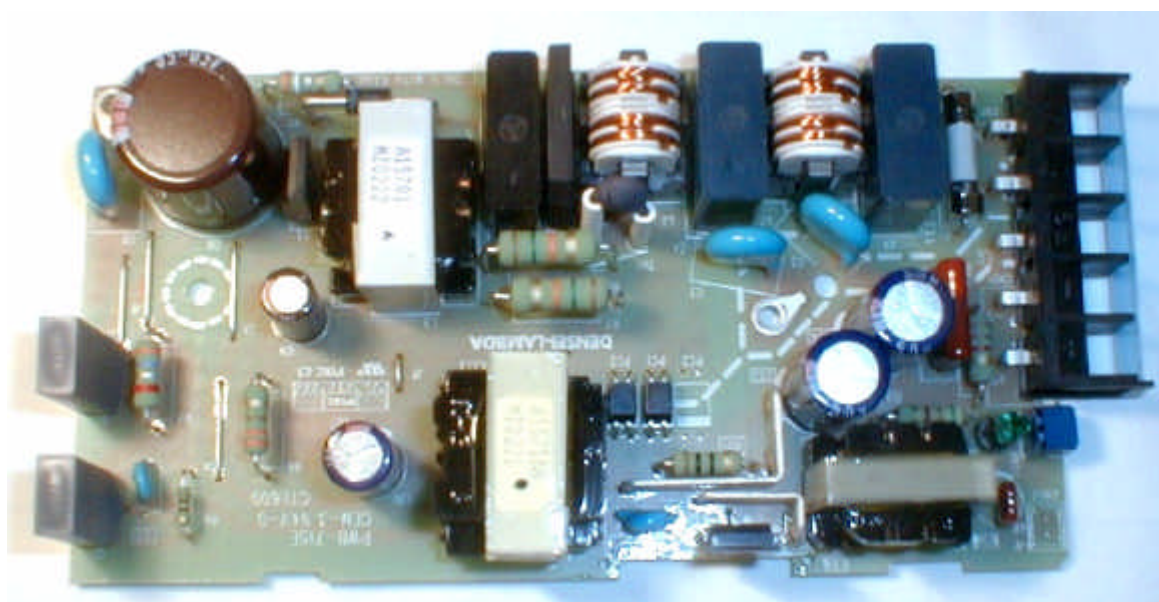
2.3 Power supply of L-L100



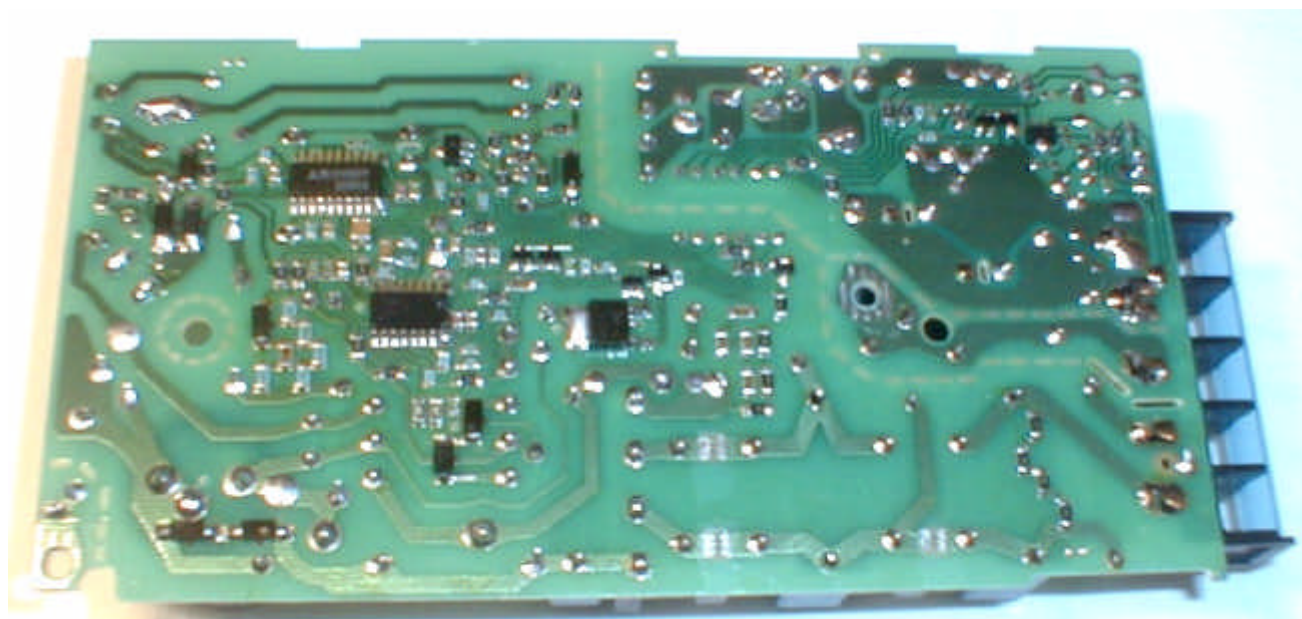
General view



General view, without cover



Power supply, component side



Power supply, foil side