

THIS DEVICE COMPLIES WITH PART 15 OF THE FCC RULES. OPERATION IS SUBJECT TO THE FOLLOWING TWO CONDITIONS: (1) THIS DEVICES MAY NOT CAUSE HARMFUL INTERFERENCE, AND (2) THIS DEVICE MUST ACCEPT ANY INTERFERENCE, RECEIVED, INCLUDING INTERFERENCE THAT MAY CAUSE UNDERSIRED OPERATION.

Note : This equipment has been tested and found to comply with the limits for a Class B digital device, pursuant to part 15 of the FCC Rules. These limits are designed to provide reasonable protection against harmful interference in a residential installation. This equipment generates, uses and can radiate radio frequency energy and, if not installed and used in accordance with the instructions, may cause harmful interference to radio communications. However, there is no guarantee that interference will not occur in a particular installation. If this equipment does cause harmful interference to radio or television reception, which can be determined by turning the equipment off and on, the user is encouraged to try to correct the interference by one or more of the following measures :

- Reorient or relocate the receiving antenna.
- Increase the separation between the equipment and receiver.
- Connect the equipment into an outlet on a circuit different from that to which the receiver is connected.
- Consult the dealer or an experienced radio/TV technician for help.

NOTE: THE MANUFACTURER IS NOT RESPONSIBLE FOR ANY RADIO OR TV INTERFERENCE CAUSED BY UNAUTHORIZED MODIFICATIONS TO THIS EQUIPMENT. SUCH MODIFICATIONS COULD VOID THE USER'S AUTHORITY TO OPERATE THE EQUIPMENT.

■ CONTENTS

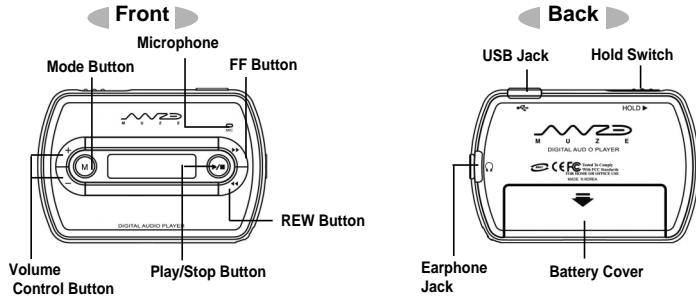
SYSTEM RECOMMENDATION	2
THE DESCRIPTION OF THE PRODUCT	2
ACCESSORIES	2
INSTALLING THE PROGRAM	3
UNINSTALL THE PROGRAM	6
HOW TO USE THE PROGRAM	7
INSERTING A BATTERY	11
POWER	11
CHANGING THE MODE (MP3 ↔ Voice)	11
PLAY	11
SEARCH	12
REPEAT A-B	12
EQUALIZER	12
REPEAT	13
CONTRAST	13
AUTO-INTELLIGENT POWER-OFF(AI-OFF)	13
VOICE RECORDING	14
DELETING VOICE MESSAGE	14
HOLD	14
FAQ	15
SPECIFICATION	17
GUARANTEE	18

In order to improve the product quality, the design or specification of the product can be changed without any notice.

SYSTEM RECOMMENDATION

- Processor : Pentium 233MHz or Better
- Windows98 / 98SE / ME / 2000Pro
- 1GB Hard Disc or Higher(4GB Recommended)
- 64MB DRAM or Better
- USB Port
- Monitor Resolution : 1024 × 768, 16Bit Color or Better
- CD-ROM Drive to Install Software

THE DESCRIPTION OF THE PRODUCT



ACCESSORIES

- Install CD
- USB Cable
- Battery (1.5V, AAA)
- Earphone
- Manual

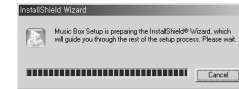
INSTALLING THE PROGRAM

CAUTION Do not connect the player to your computer before completing program installation. If the player is connected, unplug it from your computer.

1. If you insert the Install CD into your CD-ROM drive, the program starts automatically and the following screen appears. If the program does not run, double-click "INSTALL" icon on the Install CD.



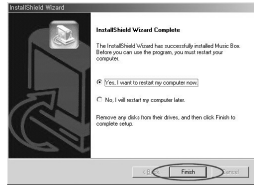
2. Click "INSTALL" button to start your installation on the above figure. The installation will proceed in the figures shown below. Follow the instructions displayed on the screen.



3. Click "NEXT", then "FINISH" button on the below window.



4. Click "FINISH" button on the right window to finish installing the program and reboot your PC automatically.

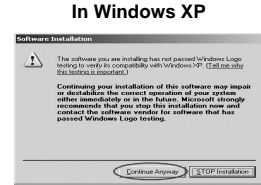
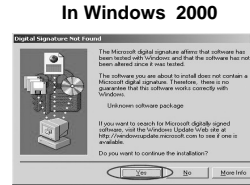


5. After rebooting PC, connect the player to the USB port of your PC and turn on the player by pressing " / " buttons.
6. If you turn on the player, "READY" is displayed on the LCD and the "New Hardware Found" window appears as shown below.



(The window may be slightly different from Windows versions.)

7. If you continue with your installation after the "New Hardware Found" window displayed in the previous step, the following message windows appear on Windows 2000 and Windows XP.

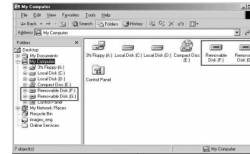


Click "Yes" or "Continue" button to continue with your installation when the above windows appear.

If you click "Stop Installing", your installation will not be completed.

[The above windows will be also displayed when installing other programs. Continue with your installation. The installation procedure has been tested and verified.]

8. If the above steps are completed normally, the player has been installed properly. Now, run Windows Explorer, there are two removable disks in Windows Explorer.



NOTE

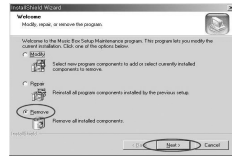
No shortcut icon will be created on Windows desktop after installing the program.

■ UNINSTALL THE PROGRAM

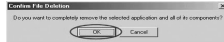
To uninstall your MP3 program (driver)

1. If the player is connected to PC, unplug it from your computer.
2. Run Add/Remove Programs from the Control Panel to display the list of installed programs.

3. Find "MUSIC BOX" in the list and double-click it to perform deleting process as follows;



4. Check "REMOVE" check-box and click "NEXT" on the second window shown above.

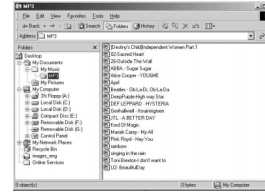


5. Finally, click "FINISH" to complete the program deleting process.
6. If you want to reinstall the player program, make sure to turn off and then back on PC before starting new installation process.
7. If the player program has not been installed properly or you need to reinstall it, uninstall the program as shown above steps, and then insert the Install CD into your CD-ROM drive and continue with installation.

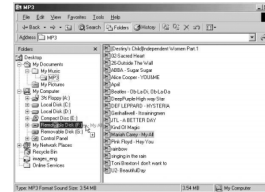
■ HOW TO USE THE PROGRAM

To download MP3 files to the player

1. After installing the program, connect the player to PC with the USB cable. Open Windows Explorer and search for MP3 files to download to the player.

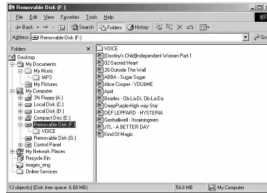


2. Drag and drop MP3 files to the removable disks.



3. While MP3 files are downloaded to the player, 'WRITING' is blinking the LCD display of the player. If USB cable is plugged out while 'WRITING' is blinking, the player is not operating properly.

4. After the download is finished, there are MP3 files in the removable disk as shown in the right figure.



5. If USB cable is disconnected, the power of the player is automatically on and press " / " button to listen to the songs.

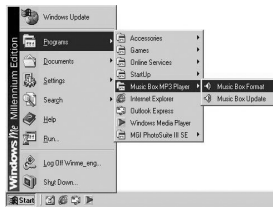
How to format removable disk

You can format the removable disks of the player.

If you format a removable disk, all the files saved in it are deleted and the drive is initialized.

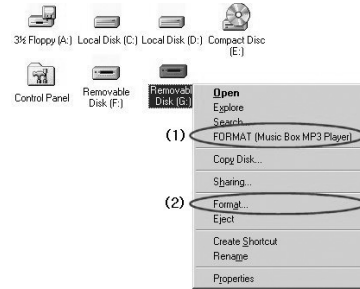
To run with Windows Start Menu

Click Start menu and point at designated menus as shown in the right figure.



To run with Windows Explorer

1. Open Windows Explorer and select the removable disk you want to format.
2. Right-click the mouse to display the Format menu as shown in the following figure.



Click (1) "Format (Music box MP3 Player)" in the Format menu to display the window shown in step 3.

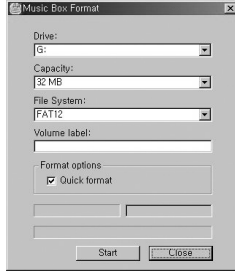
Or, you can click (2) "Format".

However, the menu item (2) is not supported on Windows 98.

If you are using Windows 98, use the menu item (1) to format a removable disk of the player.

If you use the menu item (2) on Windows 98, a window different from the one shown in step 3 will be displayed. If you format a removable disk with this different window, the player may not turn on, or removable disk may not be created, or file downloads may not proceed properly.

- If you click the menu item (2) from the Start menu or Windows Explorer, the following Formatting window appears.



- Select the removable disk you want to format from the "Drive" box and click "Start" to format the selected drive.

NOTE

If no removable disk drive is listed in the "Drive" box, remove the battery from the player and reinsert it, and then try formatting again.

■ INSERTING A BATTERY

- Open the cover on the back of the player.
- Insert the battery, according to the direction inscribed in the bottom.

■ POWER

- Press " / " button to turn on the player.
- Press " / " button over 3 seconds to turn off the player or press it shortly to change the mode. (Play mode ↔ Stop mode)

■ CHANGING THE MODE (MP3↔Voice)

- Press 'M' button to change to Voice Recording Mode in 'Stop' mode.
- Press 'M' button to change to MP3 Mode in 'Stop' mode of Voice.

■ PLAY

- Press " / " button to play a song. And press once again to stop it.
- Press '+' or '-' button to volume up or down.
- There are 27 volume steps.

SEARCH

1. Press '▶▶' or '◀◀' button to search a song in play or Stop Mode.
2. Press '▶▶' or '◀◀' button longer to fast forward or rewind while a song is playing.

REPEAT A-B

1. Press 'M' button to select a repeat section while a song or voice message is playing.
2. Press 'M' button to select the first and the last point of the file to repeat the section.

EQUALIZER

1. Press 'M' button over 3 seconds to change to Equalizer Mode.
2. EQ is displayed in LCD. And Press '▶▶' to select a mode after pressing 'M' button. (NORMAL → ROCK → POP → CLASSIC → JAZZ)

REPEAT

1. Press 'M' button over 3 seconds to change to Equalizer Mode.
2. Press '▶▶' to select Repeat Mode.
3. RPT(REPEAT) is displayed. Press '▶▶' button to change a mode after pressing 'M' button. (NORMAL → RANDOM → RPT-1 → RPT-ALL)

CONTRAST

1. Press 'M' button over 3 seconds to change to Equalizer Mode to adjust the brightness of LCD.
2. Press '▶▶' button 2 times to select LCD Contrast Mode.
3. CONTRAST is displayed in LCD. Press '▶▶' or '◀◀' to adjust the brightness after pressing 'M'.

AUTO-INTELLIGENT POWER-OFF (AI-OFF)

1. Press 'M' button over 3 seconds to change to Equalizer Mode.
2. Press '▶▶' button 3 times to select AI-OFF Mode.
3. AI-OFF is displayed in LCD. Press '▶▶' to change a mode after pressing 'M' button (1min ◀ 2min ◀ 5min).
4. AI-OFF is activated only in Stop Mode.

■ VOICE RECORDING

1. Press 'M' button over 3 seconds in Voice Mode to 'Stop' or 'PLAY' Mode.
2. REC is displayed in LCD. Press 'M' button to start voice recording. Press ' / ' button to stop it.

■ DELETING VOICE MESSAGE

1. Press 'M' button over 3 seconds to change to Equalizer Mode.
2. Press '▶▶' button 4 times to change to Delete Mode.
3. DEL is displayed in LCD. VOICE is displayed in LCD if pressing 'M' button.
4. Press 'M' button again to display a voice file list. Select a file and press 'M' button.
5. After that, "YES NO EXIT" is displayed.
6. Select 'YES' to delete a file, otherwise select 'NO'. Select 'EXIT' to change the mode.

■ HOLD

1. If HOLD switch slid to the 'HOLD' direction, then the other key function will not work.
2. At this state, the '🔒' will displayed at LCD panel. To escape, return the HOLD switch to the other side.

■ FAQ

Please check the followings first if the product does not work properly.

Power is not on.

▶ Check the polarity of the battery.
Check the remained capacity of the battery.
Check USB cable connection.

Noises are generated in downloaded file or power is not on.

▶ This problem occurs due to the incorrect formatting. Remove the battery from the player and reinsert it. Turn on the player after connecting to PC. If you turn on the player, "READY" is displayed on the LCD. In this status, refer to page 8, HOW TO FORMAT THE REMOVABLE DISK.

The buttons of the player do not work.

▶ Check if the HOLD mode is on.

The removable disk is not generated though connected to PC.

▶ Check if the power is on. If you turn on the player, "READY" is displayed on the LCD.

No removable disk drive is listed in the "Drive" box on the Formatting window.

Remove the battery from the player and reinsert it.
Check if SCSI Host Controller is listed in the Device Manager window.

(To display Device Manager window, click Start -> Settings -> Control Panel -> System Properties.)



If SCSI Host Controller is configured abnormally as shown in the following figure, remove it by right-clicking the mouse button.

 SCSI and RAID Controller
CMTech Music Box SCSI Host Adapter

After removing it, click Refresh to reinstall the device driver.

If the device driver has been installed normally, the yellow exclamation mark at the front of the device name disappears.

■ SPECIFICATION

Main Function	MP3 Player / Voice Recorder / Removable Disc	
Interface	USB Port	
File Transmission Speed	2.7Mbps	
Display	STN LCD	
Voice Recording Time	64M	2Hours (64MB Flash Memory)
	128M	4Hours (128MB Flash Memory)
Battery	AAA Type 1EA	
Battery Life	6Hours	
Output Power	4.5mW x 2 (16Ω)	
S/N (Noise Ratio)	90dB (with 20KHz LPF)	
Case	Aluminum / Plastic	
EMI		
		
Dimension (W x H x D)	86* 13.8* 30(mm)	
Net Weight (without Battery)	30g	

■ GUARANTEE

Product	MP3 Player
Assurance period	1 YEAR
Sales date	yy mm dd
Customer	
Address Name	tel
Sales agency	
Address Name	tel

- In occuring of trouble, contact to sales agency please.

ENGLISH