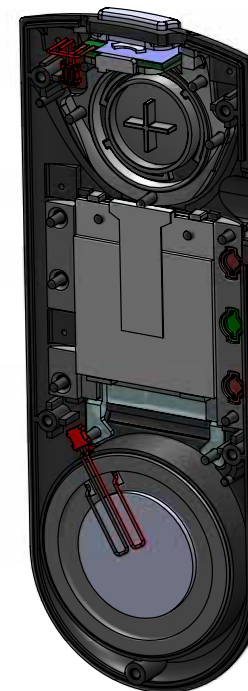
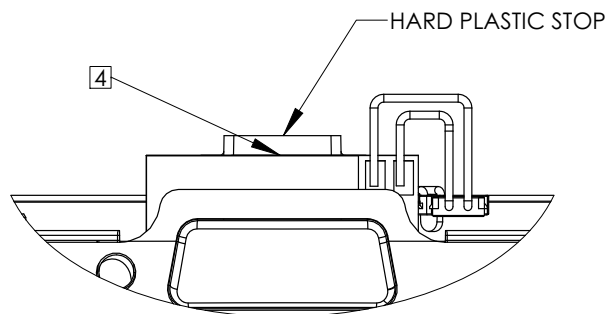
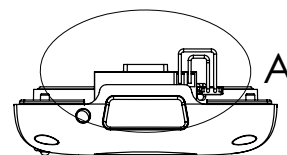
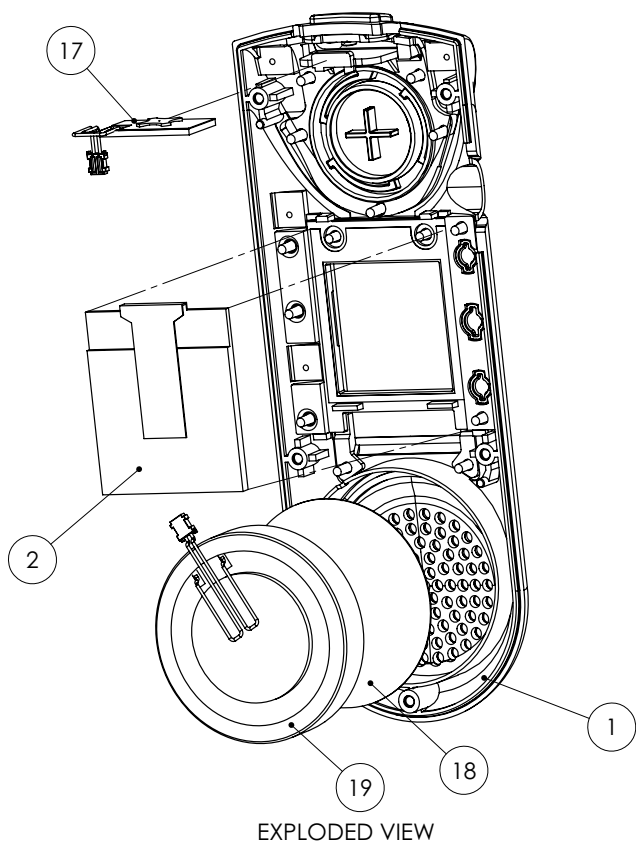




THE INFORMATION CONTAINED IN THIS DRAWING IS THE SOLE PROPERTY OF VOCERA COMMUNICATIONS, INC. ANY REPRODUCTION IN PART OR WHOLE WITHOUT THE WRITTEN PERMISSION OF VOCERA COMMUNICATIONS, INC. IS PROHIBITED.

NOTES: (UNLESS OTHERWISE SPECIFIED)

1. REMOVE PROTECTIVE LINING ON OLED DISPLAY (ITEM 2) AND ADHESIVE LINER ON OLED FRAME PSA (ITEM 13 ON THE 132-01481 DRAWING) AND INSERT OLED INTO APERTURE OF OLED FRAME AS SHOWN.
2. PRESS OLED PART INTO FRAME SO THAT ADEQUATE ADHESION OF THE MATING PARTS IS OBTAINED.
3. ADHERE DND SWITCH PCBA (ITEM 17) ONTO CALL BUTTON RETAINER USING PSA WHICH IS ATTACHED TO THE UNDERSIDE OF THE PCBA.
- 4 TO PROPERLY LOCATE THE DND SWITCH PCBA, GENTLY INSERT THE PCBA AT A SLIGHT ANGLE SO THAT PSA DOES NOT ROLL OVER AND THAT "FRONT FACING" EDGE OF PCBA IS SEATED FIRMLY AGAINST THE HARD PLASTIC STOP. SEE VIEW A.
- 5 INSERT SPEAKER SCREEN (ITEM 18) INTO SPEAKER CAVITY WITH THE KAPTON TAPE SIDE FACING AWAY FROM CAVITY.
- 6 INSERT SPEAKER ASSEMBLY (ITEM 19) INTO CAVITY, ORIENT SPEAKER WIRE SO THAT IT EXITS THE SPEAKER CAVITY IN THE 11:00 POSITION, PLUS OR MINUS 0.5 DEGREES. ARRANGE SERVICE LOOP OF SPEAKER WIRE SO THAT IT EXTENDS OVER THE CENTER OF THE SPEAKER MAGNET AS SHOWN.



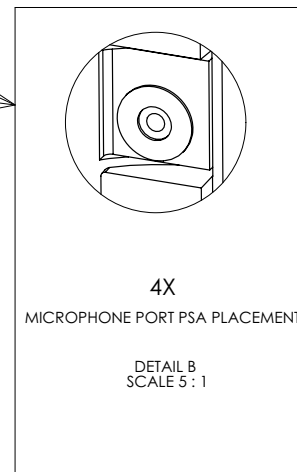
vocera			525 RACE STREET SAN JOSE, CA 95126 WWW.VOCERA.COM 408.882.5100
TITLE:			
Generic Drawing, Top Assembly, Monopole, Badge, B3000			
SIZE	DWG. NO.	REV	
B	132-01600	A	
SCALE: 1.5:1			SHEET 2 OF 7

THE INFORMATION CONTAINED IN THIS DRAWING IS THE SOLE PROPERTY OF VOCERA COMMUNICATIONS, INC. ANY REPRODUCTION IN PART OR WHOLE WITHOUT THE WRITTEN PERMISSION OF VOCERA COMMUNICATIONS, INC., IS PROHIBITED.

NOTES: (UNLESS OTHERWISE SPECIFIED)

1. WIPE MATING SURFACES WITH ISOPROPYL ALCOHOL BEFORE APPLYING PSA.
2. ADHERE MICROPHONE PORT PSA (ITEMS 15, 4 PLS). PSA INTERNAL DIAMETER MUST BE CONCENTRIC WITH MICROPHONE PORT HOLES AS SHOWN IN DETAIL "D". ANY BLOCKAGE OF MICROPHONE PORTS WILL RESULT IN DEGRADATION OF MICROPHONE PERFORMANCE.

IPA CLEAN



vocera 525 RACE STREET  
SAN JOSE, CA 95126  
WWW.VOCERA.COM  
408.882.5100

TITLE:

Generic Drawing, Top Assembly,  
Monopole, Badge, B3000

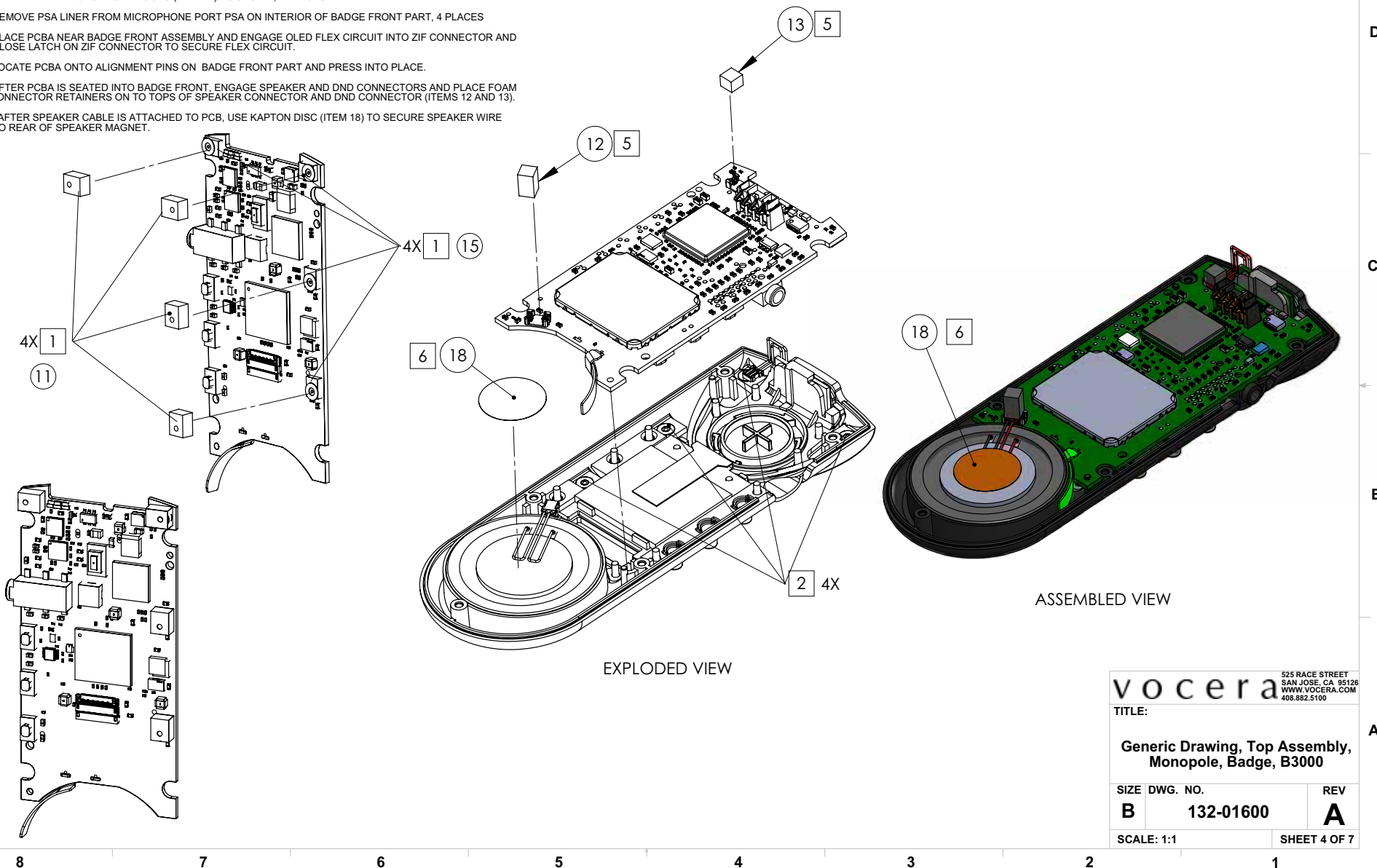
SIZE	DWG. NO.	REV
B	132-01600	A

SCALE: 1:1 SHEET 3 OF 7

THE INFORMATION CONTAINED IN THIS DRAWING IS THE SOLE PROPERTY OF VOCERA COMMUNICATIONS, INC. ANY REPRODUCTION IN PART OR WHOLE WITHOUT THE WRITTEN PERMISSION OF VOCERA COMMUNICATIONS, INC. IS PROHIBITED.

NOTES: (UNLESS OTHERWISE SPECIFIED)

- 1 PLACE MICROPHONE PORT PSA PARTS (ITEM 15) ON MICROPHONE PARTS AND REMOVE LINER FROM THE PSA; THEN ADHERE MICROPHONE BOOTS (ITEM 11) AS SHOWN, 4 PLACES.
- 2 REMOVE PSA LINER FROM MICROPHONE PORT PSA ON INTERIOR OF BADGE FRONT PART, 4 PLACES
3. PLACE PCBA NEAR BADGE FRONT ASSEMBLY AND ENGAGE OLED FLEX CIRCUIT INTO ZIF CONNECTOR AND CLOSE LATCH ON ZIF CONNECTOR TO SECURE FLEX CIRCUIT.
4. LOCATE PCBA ONTO ALIGNMENT PINS ON BADGE FRONT PART AND PRESS INTO PLACE.
- 5 AFTER PCBA IS SEATED INTO BADGE FRONT, ENGAGE SPEAKER AND DND CONNECTORS AND PLACE FOAM CONNECTOR RETAINERS ON TO TOPS OF SPEAKER CONNECTOR AND DND CONNECTOR (ITEMS 12 AND 13).
- 6 AFTER SPEAKER CABLE IS ATTACHED TO PCB, USE KAPTON DISC (ITEM 18) TO SECURE SPEAKER WIRE TO REAR OF SPEAKER MAGNET.

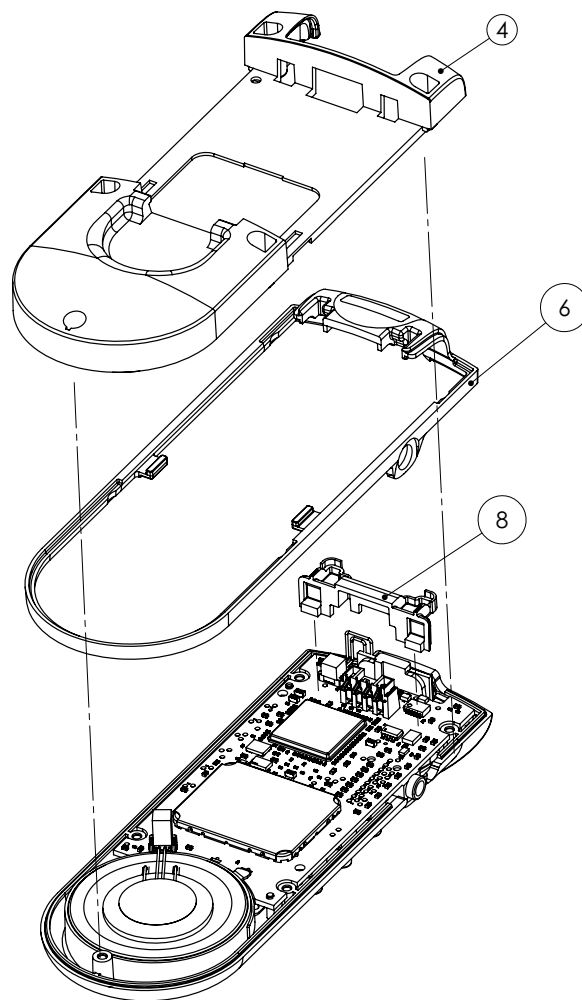


vocera			525 RACE STREET SAN JOSE, CA 95126 WWW.VOCERA.COM 408.882.5100
TITLE:			
Generic Drawing, Top Assembly, Monopole, Badge, B3000			
SIZE	DWG. NO.	REV	
B	132-01600	A	
SCALE: 1:1		SHEET 4 OF 7	

THE INFORMATION CONTAINED IN THIS DRAWING IS THE SOLE PROPERTY OF VOCERA COMMUNICATIONS, INC. ANY REPRODUCTION IN PART OR WHOLE WITHOUT THE WRITTEN PERMISSION OF VOCERA COMMUNICATIONS, INC., IS PROHIBITED.

NOTES: (UNLESS OTHERWISE SPECIFIED)

1. ASSEMBLE SPINE CAP (ITEM 8) AND SPINE (ITEM 6) ON TO PCBA AND BADGE FRONT.
2. ASSEMBLE BADGE BACK (ITEM 4) ONTO SPINE AND FRONT ASSEMBLY.



EXPLODED VIEW



ASSEMBLED VIEW

v o c e r a 525 RACE STREET  
SAN JOSE, CA 95126  
WWW.VOCERA.COM  
408.882.5100

**TITLE:**

**Generic Drawing, Top Assembly,  
Monopole, Badge, B3000**

SIZE	DWG. NO.	REV
------	----------	-----

<b>B</b>	<b>132-01600</b>	<b>A</b>
----------	------------------	----------

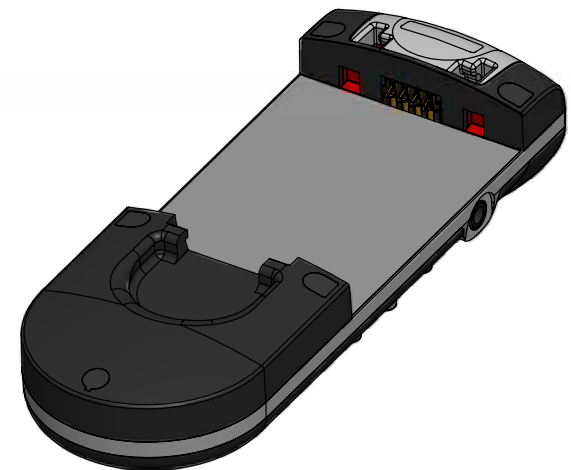
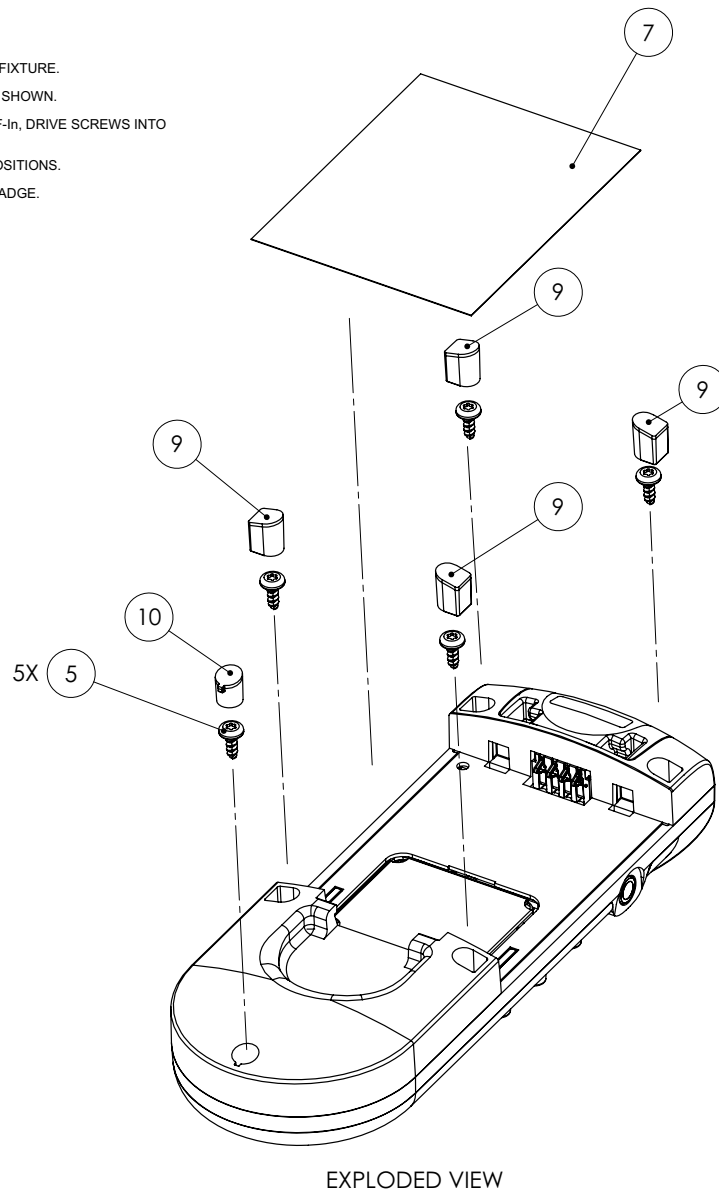
SCALE: 1:1	SHEET 5 OF 7
------------	--------------

8 7 6 5 4 3 2 1

THE INFORMATION CONTAINED IN THIS DRAWING IS THE SOLE PROPERTY OF VOCERA COMMUNICATIONS, INC. ANY REPRODUCTION IN PART OR WHOLE WITHOUT THE WRITTEN PERMISSION OF VOCERA COMMUNICATIONS, INC. IS PROHIBITED.

NOTES: (UNLESS OTHERWISE SPECIFIED)

1. PLACE BADGE IN FINAL ASSEMBLY CLAMPING FIXTURE.
2. INSERT FIVE SCREWS INTO SCREW HOLES AS SHOWN.
3. USE A TORQUE LIMITED DRIVER SET AT 14 OzF-in, DRIVE SCREWS INTO LOCATION UNTIL SET TORQUE IS ATTAINED.
4. INSERT SCREW CAPS, ITEMS 10 AND 9 INTO POSITIONS.
5. ADHERE BADGE LABEL (ITEM 7) TO BACK OF BADGE.

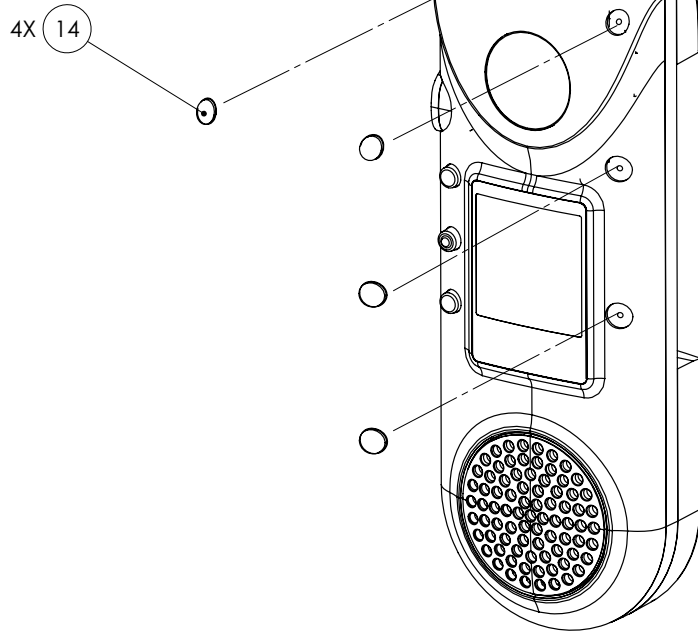


vocera			525 RACE STREET SAN JOSE, CA 95126 WWW.VOCERA.COM 408.882.5100
TITLE:			
Generic Drawing, Top Assembly, Monopole, Badge, B3000			
SIZE	DWG. NO.	REV	
B	132-01600	A	
SCALE: 1:1			SHEET 6 OF 7

THE INFORMATION CONTAINED IN THIS DRAWING IS THE SOLE PROPERTY OF VOCERA COMMUNICATIONS, INC. ANY REPRODUCTION IN PART OR WHOLE WITHOUT THE WRITTEN PERMISSION OF VOCERA COMMUNICATIONS, INC. IS PROHIBITED.

NOTES: (UNLESS OTHERWISE SPECIFIED)

1. USING A MICROSCOPE, VISUALLY CHECK THAT EACH MICROPHONE PORT IS CLEAR OF OCCLUSIONS TO TOP OF MICROPHONE.
2. ADHERE MICROPHONE SCREEN (ITEM 14) 4X AS SHOWN.
3. USE MIC SCREEN FIXTURE TO APPLY FORCE TO SET ADHESIVE OF PSA BACKING.



vocera 525 RACE STREET  
SAN JOSE, CA 95126  
WWW.VOCERA.COM  
408.882.5100

TITLE:

Generic Drawing, Top Assembly,  
Monopole, Badge, B3000

SIZE	DWG. NO.	REV
B	132-01600	A

SCALE: 1:2	SHEET 7 OF 7
------------	--------------