

BlueShark User's Manual

Inter Link Korea Co., Ltd.

2002. 04

Contents

1.	Introduction	4
1.1.	What is BlueShark ?	4
1.2.	Checking Minimum System Requirement	4
1.3.	Package Content.....	4
1.4.	Caution	5
2.	Features of BlueShark	6
2.1.	Simplicity	6
2.2.	Easy Using	6
2.3.	Convenience	6
2.4.	Security	6
2.5.	Compatibility.....	6
3.	Installing and Removing BlueShark S/W.....	7
3.1.	Installing S/W	7
3.1.1.	In case of using Windows 2000, XP	7
3.1.2.	In case of using Windows 98, ME	12
3.2.	Removing Software.....	13
3.3.	Hardware Installing (USB Driver configuration).....	15
4.	Checking points in the Windows system Before starting BlueShark.	17
4.1.	Concept of Sever and Client.....	17
4.2.	For Windows 2000, XP	17
4.3.	For Window 98SE, ME.....	20
5.	Starting and Finishing the BlueShark	24
5.1.	Starting BlueShark	24
5.2.	Finishing BlueShark	25
6.	Configuration of the Manager Window	26
6.1.	Server Information :	26
6.2.	Client Information:	28
6.3.	My Connection :	28
6.4.	Icon information.....	29
7.	How to Use BlueShark ?	31
7.1.	Basic information of using the BlueShark.....	31

7.1.1.	Configuring Server	31
7.1.2.	Configuring Client.....	32
7.2.	Using Service of BlueShark (LAN, DUN, OBEX-FTP)	34
7.2.1.	How to share LAN	34
7.2.2.	How to Use Dial-up Networking (DUN)	37
7.2.3.	How to Use File Transfer (OBEX-FTP)	40
8.	How to Use WinRoute.....	43
9.	Configuring the Server of BlueShark Manager.....	45
10.	Customer Service	48
11.	Product Specifications.....	48
12.	Notifications	48
13.	Product Warranty	50

1. Introduction

1.1. What is BlueShark ?

On the basis of Simplicity. Easy Using. Convenience. Security. Capability.

USB Adapter 'BlueShark' makes you enjoy wireless connections between desktops or notebook PCs, mobile phone and other Bluetooth devices. Sharing LAN for Simultaneous web-surfing, Drag & Drop file transfer, Checking your email and Internet searching using Bluetooth mobile phone wherever. 'BlueShark' is compliance with Bluetooth Ver. 1.1 and it supports to multiple connections based on the Bluetooth standard. 'BlueShark', as a common name of software and hardware, works you experience connectivity wirelessly powerfully and efficiently. 'BlueShark' will guide you to essential wireless networking world !!!

1.2. Checking Minimum System Requirement

Pentium II over 64MB RAM

Windows 2000 or XP

USB Port

CD-ROM Drive

Over 20MB HDD space

Pentium III over 128MB RAM is recommended.

Installing BlueShark

1.3. Package Content

* BlueShark USB Adapter

* BlueShark Manager CD

* User's Manual

1.4. Caution

Please read the following notes carefully !

Caution 1 Impact

Avoid dropping this product as it contains sensitive high-tech components which can easily damaged.

Caution 2 Humidity

Avoid leaving this product in humid places (bathroom), as immersing in water, as it is not water-proof or water resistance.

Caution 3 Exposure

Never expose this product to high temperatures, or leave in direct sunlight for a long period as damage may occur to the delicate electronic circuitry.

Caution 4 Disassembly

Please do not disassemble this product. Service should be done by a specialist.

Caution 5 Chemical

Never use chemical cleaners or abrasive agents to clean this product. Use only a soft cloth.

Caution 6 Magnetism

Most electronic products are affected by magnetism (especially loadstone). This product may be damaged or performance maybe affected if left near a source of magnetic interference.

2. Features of BlueShark

2.1. Simplicity

From installation to services via enquiry, BlueShark supports point-and-click and auto-discovery simple.

2.2. Easy Using

Provides considerable defaults and easy to follow screens wizards for connecting to other Bluetooth devices and utilizing the services they offer.

2.3. Convenience

As a role of access point (AP), you can enjoy web-surfing individually or Internet games simultaneously sharing LAN and existed Internet line.

2.4. Security

Using a signaling technology called frequency hopping spread spectrum (FHSS) to minimize interference and enhances security Bluetooth devices, and the Bluetooth devices are identified at the physical layer by their unique address and PINs, plus, users can set up user name and passwords for strengthen their security and confidence.

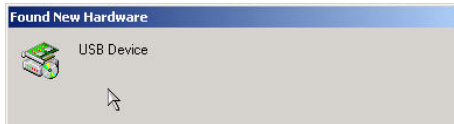
2.5. Compatibility

BlueShark automatically finds and displays other Bluetooth devices at speed up to maximum 1Mbps within 30 meter (Open space).

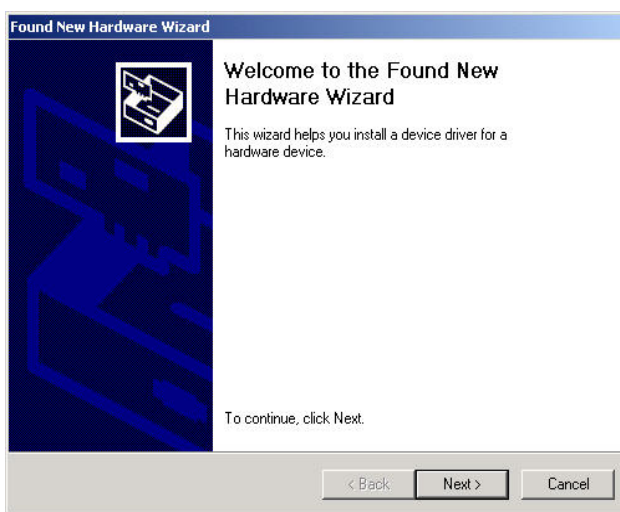
* Coverage range and transfer speed rate depend on number of users, physical conditions (esp. barrier like steel or glass wall), and other electronic devices in the area.

3.3. Hardware Installing (USB Driver configuration)

When you put the BlueShark into USB port, automatically finds out New Hardware Device, and then put the BlueShark CD into CD-Rom.



As soon as put the BlueShark, window of auto-detected New Hardware Device appears..



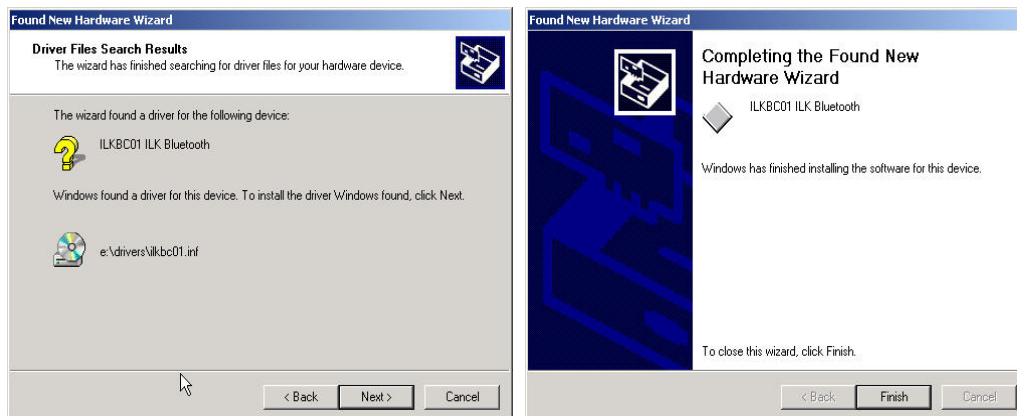
② To continue installation, click Next button.



③ Click next to keep going.



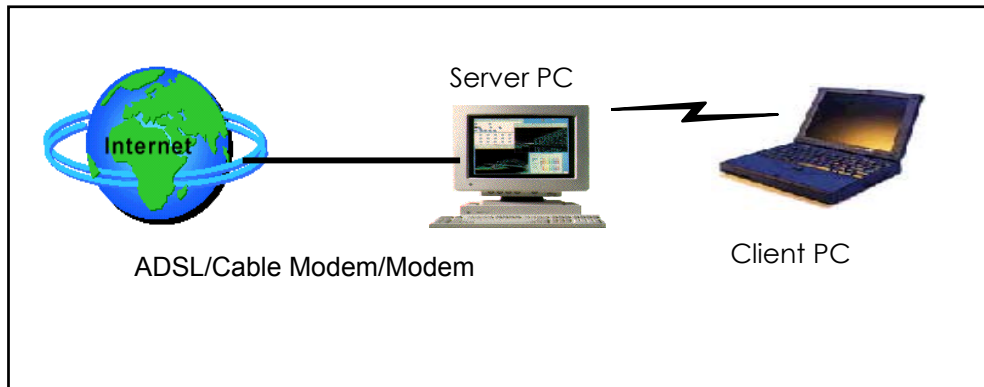
- ④ Check CD-Rom drives dialog box and click Next.



- ⑤ Click next to finish.

4. Checking points in the Windows system Before starting BlueShark.

4.1. Concept of Sever and Client



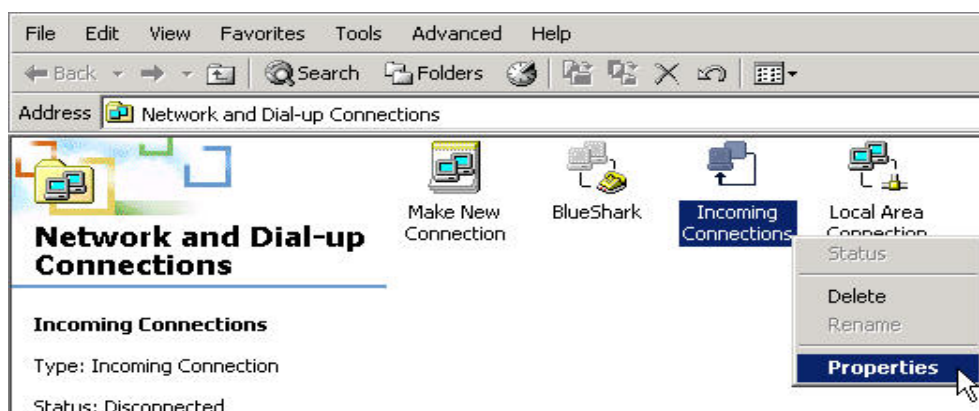
When you would connect to the Internet through existed line (ADSL/Cable Modem/Modem), your notebook computer is called 'Client' computer, and another one connected with existed Line is called 'Server' computer.

4.2. For Windows 2000, XP

In case of using Windows 2000 or XP based on Server, the user must make a new user account for accepting Client in which it has Client name and Password.

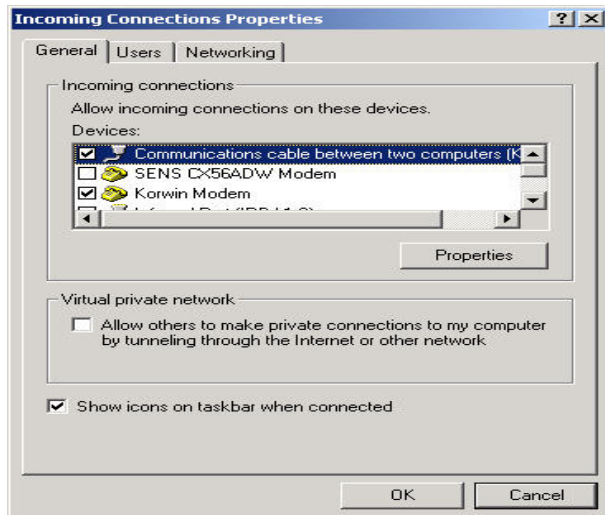
In order you to accept other guest (Client) to your computer (Server), you have to set up for creating new user account as follows.

In the Network and Dial-up Connections window, right-click on the Incoming Connections. When the pop-up menu appears, select Properties.

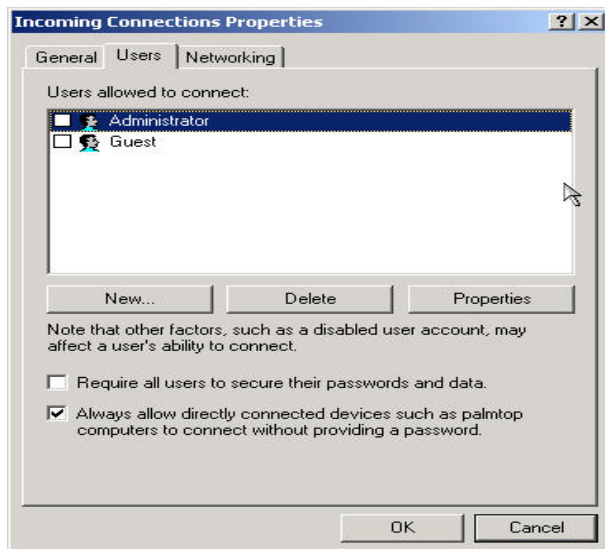


Inter Link Korea

In the Incoming Connections Properties, ensure that Communications cable between two computers as shown below and click Properties to continue.



In the Users tab, select the New.



Check the dialog box like above and click OK.

Inter Link Korea

When New user window appears, complete the information dialog boxes. If you want to assign a password, enter and confirm the password and click OK.



The 'New User' dialog box is shown with the following fields and values:

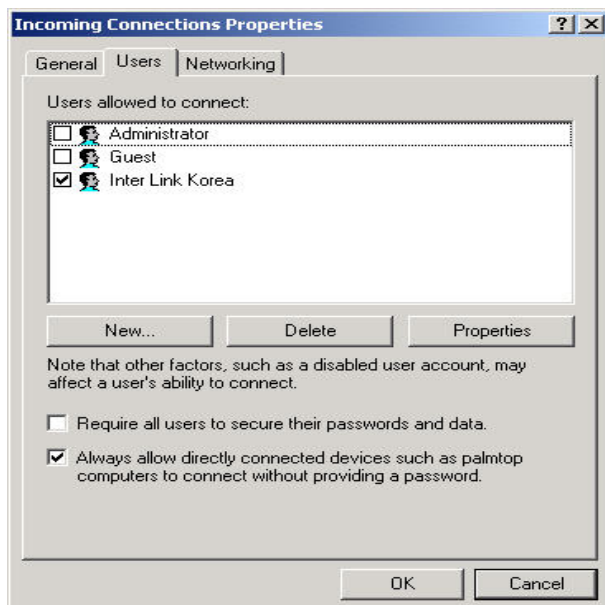
Field	Value
User name:	Inter Link Korea
Full name:	
Password:	xxxxxx
Confirm password:	xxxxxx

Buttons: OK, Cancel

New user (Inter Link Korea) has been registered to your computer.

Push OK for completion.

User named Inter Link Korea allowed visiting to your computer for sharing LAN and files with a provided password.



The 'Incoming Connections Properties' dialog box is shown with the 'Users' tab selected. The 'Users allowed to connect:' list contains the following entries:

User	Allowed
Administrator	<input type="checkbox"/>
Guest	<input type="checkbox"/>
Inter Link Korea	<input checked="" type="checkbox"/>

Buttons: New..., Delete, Properties

Note that other factors, such as a disabled user account, may affect a user's ability to connect.

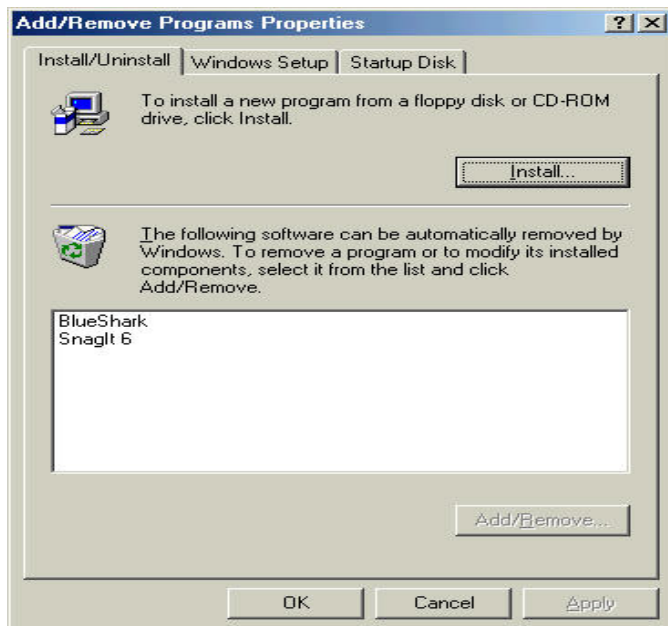
☐ Require all users to secure their passwords and data.

☒ Always allow directly connected devices such as palmtop computers to connect without providing a password.

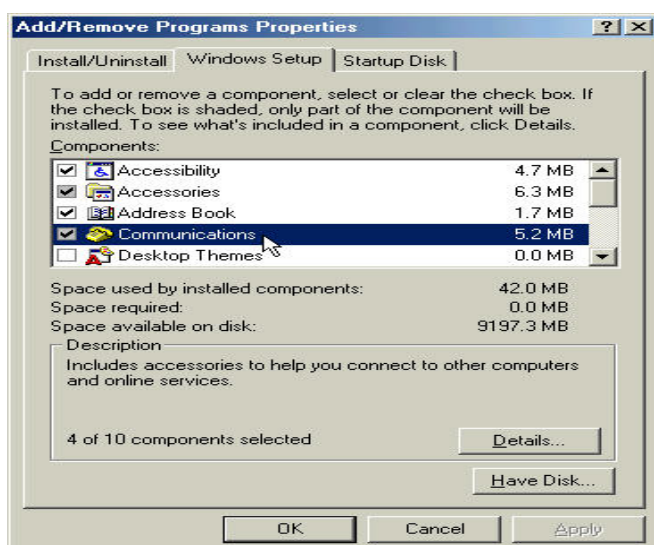
Buttons: OK, Cancel

4.3. For Window 98SE, ME

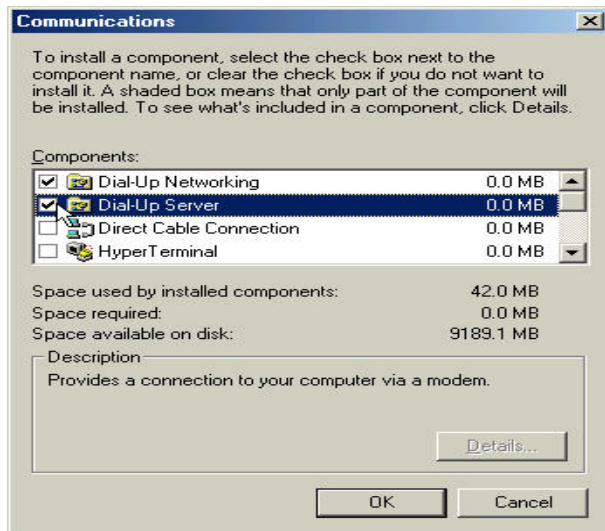
※ In order to operate Server PC based on Window 98 or ME (Only Server PC, no needed to Client PC), the user has to setup the Dial-up Networking as follows.



① Click the Add/Remove Programs Properties in the Device Manager, then the above window appears.



② Select Windows Setup tab, and check the Communications box and then click OK.



- ③ Check the Dial-Up Server and click OK.



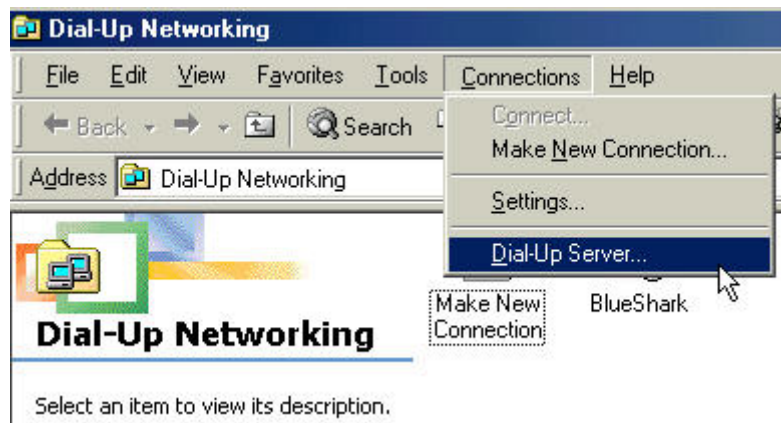
- ④ Jump on Dial-up Networking.

If complete successfully, Dial-Up Server will be appeared.

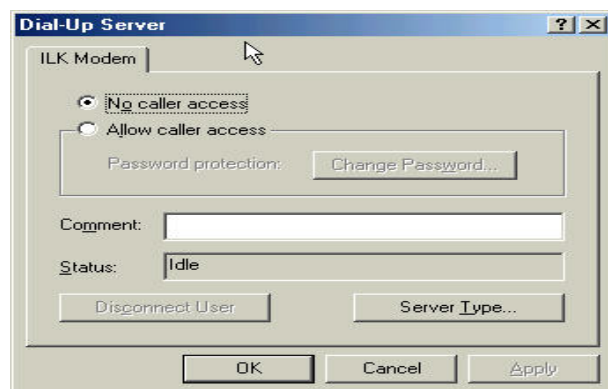
Dial-up Networking location :

In case of 98SE, click My computer, then can see icon of Dial-up Networking.

In case of ME, click Start and select Setting in the menu, the user can see file of Dial-up Networking.



- ⑤ Click Dial-up Server in the Connections.



- ⑥ Check the dialog box of Allow caller access, and then click OK.

- ⑦ Type New password and then click OK.



- ⑧ Select “PPP:Internet, Windows 2000/NT, Windows ME” and then click OK.



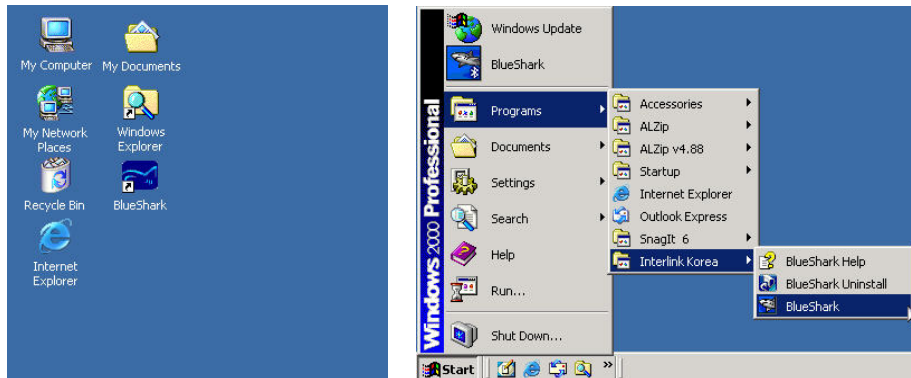
- ⑨ Check the Status is Monitoring and then click OK.



5. Starting and Finishing the BlueShark

5.1. Starting BlueShark

Put the BlueShark USB Adapter into USB port and double-click the BlueShark icon or from the Start menu, and click start.

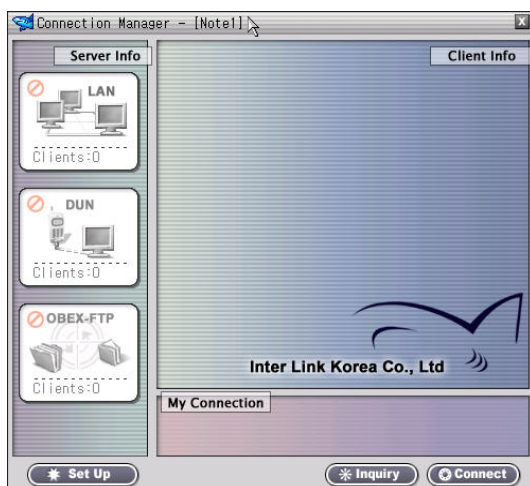


Slide the mouse pointer up to Program; this automatically displays a submenu. Slide right to Interlink Korea and click, and then click the BlueShark tool bar for operation.

When BlueShark operated, the icon at the right bottom line appears.



The BlueShark manager window appears as follow.



When the user clicks X button at the right upper in the window, the window will be gone, however functions alive.

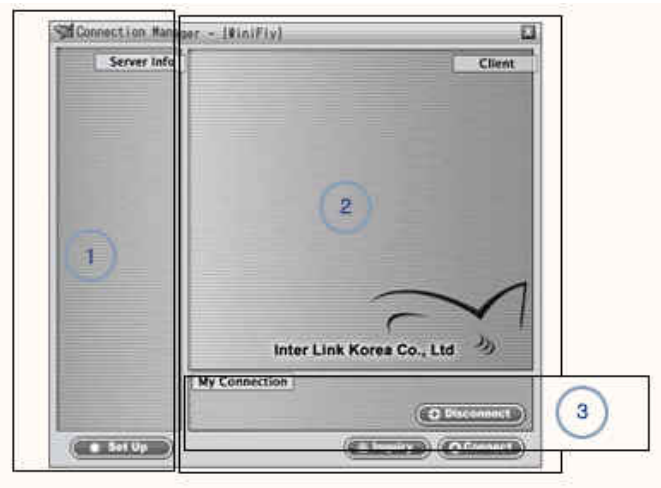
5.2. Finishing BlueShark

To close BlueShark manager, right-click the mouse on the BlueShark icon in the tray at the bottom right and click Exit in the Menu.



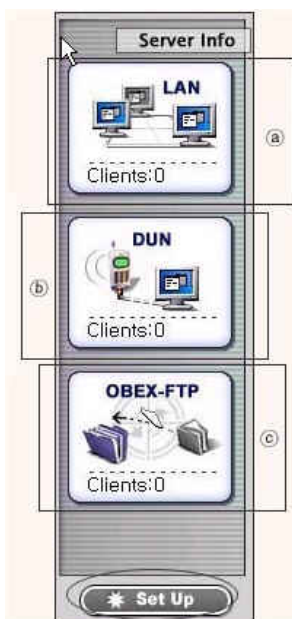
6. Configuration of the Manager Window

The window of BlueShark manager consists Server Info①, Client Info② and My connection③ as follows.



6.1. Server Information :

There are 3 sub-menu in the Server information including LAN, Dian-up networking (DUN) and File transfer (OBEX FTP). If you turn on any services, the computer will be a Server who provides service(s) and the following picture shows all functions are ready to service now.



Bottom of each, the meaning of Clients : 0 is the number of Client connected to Server.

㉠ **LAN**

For Sharing LAN, Client computer can access Internet with Server computer wirelessly and simultaneously.

㉡ **DUN**

Using modem in the Server computer or Bluetooth Mobile phone, the Client computer can access Internet Service Provider (ISP) for web-surfing and checking Email.

㉢ **OBEX-FTP**

Client computer can access to Server computer remotely for exchanging files.

6.2. Client Information:

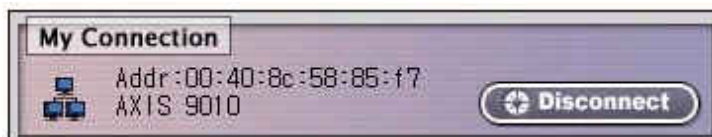
In order to access any Server within the area, click Inquiry button to look at the BlueShark or any other Bluetooth devices.



As soon as a few second passed after clicked Enquiry button, it shows your computer has found out 2 Bluetooth devices in the area as shown above, and then click View icon so that what kinds of service you can get from them.

6.3. My Connection :

In the box of My Connection, you can see the Server information, and if want to click Disconnect button, the service will be finished.



6.4. Icon information



For searching other Bluetooth devices and to know what kinds of service you can get around you, click Inquiry button.

If one or a few devices listed in the registry, history has related information, for saving tie, the customer is not needed to Inquiry again.




:

After you have found any Bluetooth devices, click this View button so that you take a look at detailed information about the services.


LAN Sharing



After selected this icon and click  button or double-click this icon for enabling LAN service. When the color filled-up, it means that the service is ready now.


Dial-up Networking (DUN)



After selected this icon and click  button or double-click this icon for enabling DUN service. When the color filled-up, it means that the service is ready now.

File Transfer (OBEX-FTP)



After selected this icon and click  button or double-click this icon for enabling File Transfer service. When the color filled-up, it means that the service is ready now.



Select Connect button so that the Client links to Server for performing a service.



When you close any service, click this button.

7. How to Use BlueShark ?

7.1. Basic information of using the BlueShark

※ Precautions when uses BlueShark manager.

BlueShark has role of both Client and Server. When the BlueShark operates, it supports only one of Client or Server and services just one of them in which LAN, DUN or OBEX-FTP in case of Client, however In case of Server, it can supports one service out them to a few Client's computers.

7.1.1. Configuring Server



In order to configure a computer as Server, click icons in the Server Info for enabling service(s). It can be adjusted On or Off service(s) when just click the icon(s). Blow the icon, it shows how many Client(s) connected to the service.


7.1.2. Configuring Client

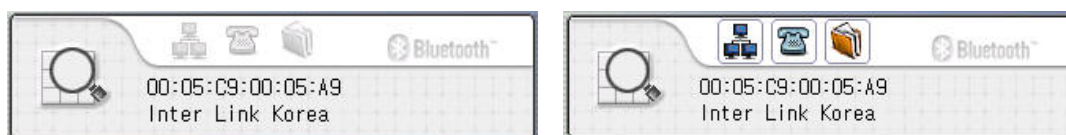


In order to use the BlueShark as a Client, the user has to turn off service(s) from Server first like above.




Click Inquiry button for searching any Bluetooth devices around Client.

After found any device(s), click  button for checking service of Server or any Bluetooth devices.

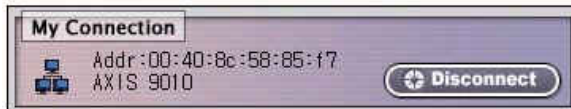



If the Server computer supports all service like above, click one of them in order to make a service enabled.

When clicks LAN service, the icon should change like .

After selected LAN service, click  button or double-click .

If connected successfully, the detailed information for connection appears.



When you would like to convert to other service, click  button and then select other service button.

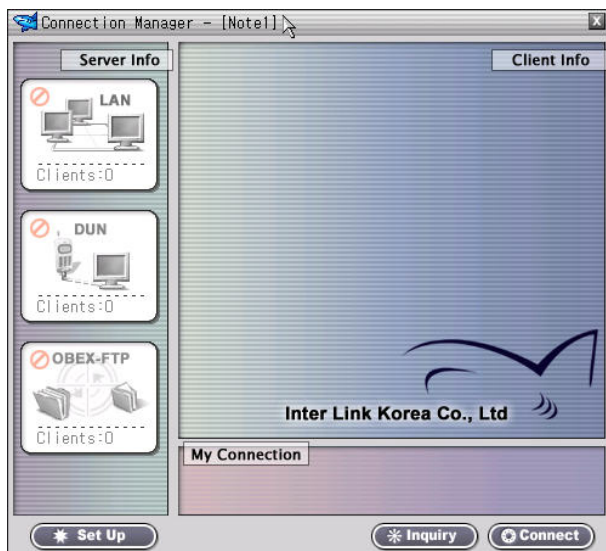
7.2. Using Service of BlueShark (LAN, DUN, OBEX-FTP)

7.2.1. How to share LAN

As explained about the conception of Server and Client, simply you can understand that Server means it connected to Internet and Client means it would connect Server for sharing the existed Internet line.


① After completed installation successfully, both Client and Server need to attach BlueShark Hardware to USB port and operate BlueShark Manager.


BlueShark manager window will be displayed.





② From Server computer, click LAN box in Server Info, and then its color fills up.



③ From Client Computer, Click  button so that it finds to other Bluetooth devices including Server computer.

After detected Server, click  button in order to know what kinds of service can get from Server computer.




Click  icon and then its color fills up as like .

And then select  for connection.

④ Once Dial-up Connections window appears, enter User name and Password in the dialog box which has been already registered in New Connections in Server computer,



⑤ Successfully connected, Networking icon pop-up icon will be appeared in tray at the bottom right, and then Click Explorer  to access the Internet.



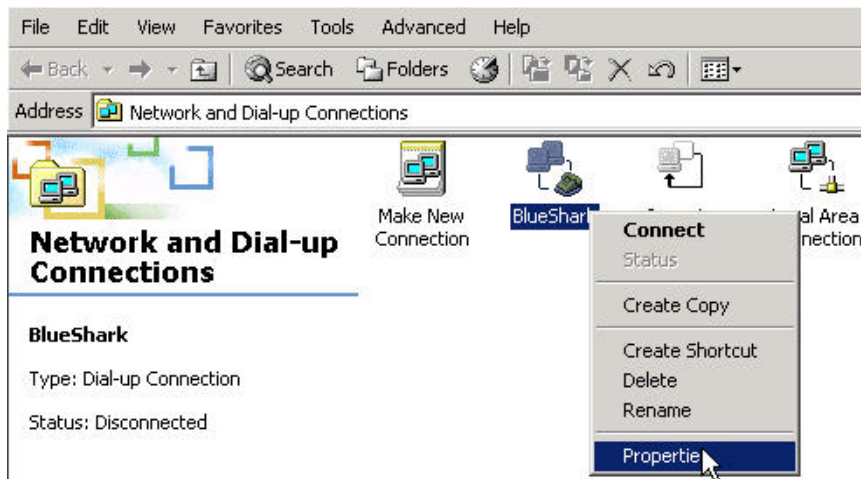
*** Notice**

If Client can not connect to Internet through Server even though Sever has been connected to Internet, in this case almost Server should need to install Route program in order to share the Connection with Client PCs. Please note # 8 of “How to Install WinRoute.”

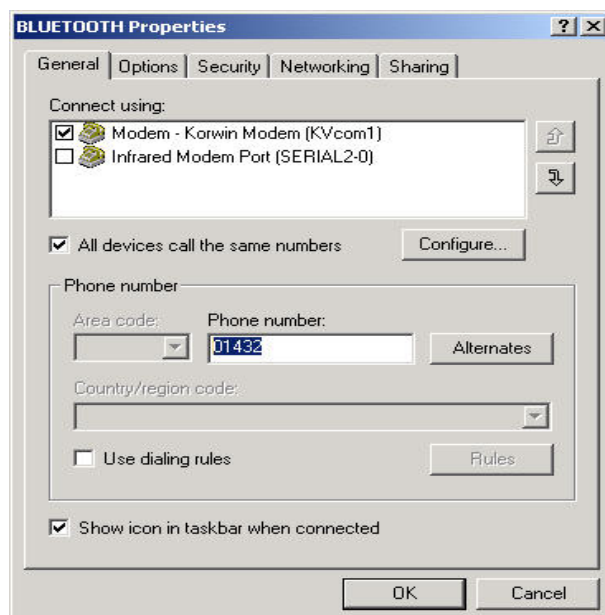
7.2.2. How to Use Dial-up Networking (DUN)

How to connect to Internet through PC has a modem or Bluetooth mobile phone ?

For using DUN right-click on BlueShark icon in the Network and Dialup Connections menu and pops up Properties in the menu.



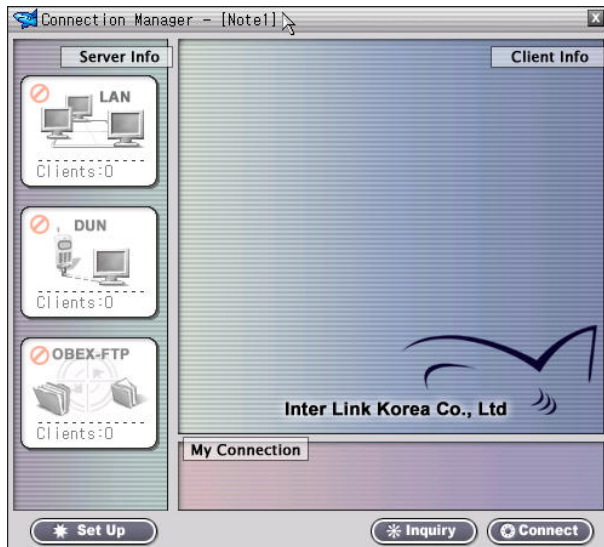
Select General tab and type the telephone number of service provider, and then click OK.



Inter Link Korea



After completed settings, install both Client and Server.

If you use Dial-up networking through Bluetooth mobile phone, you have to follow phone's instructions for synchronizing.

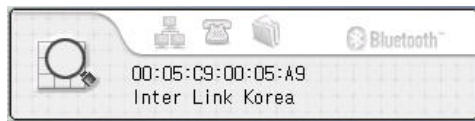




From Server computer, click DUN icon in Server Info, and then its color fills up.



From Client Computer, Click  button so that finds out to other Bluetooth devices including Server computer. After detected Server, click  button in order to know what kinds of service can get from Server computer.

Inter Link Korea



Click  and select  button or double-click this icon, and then color fills up as

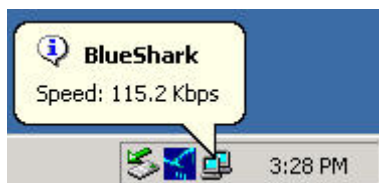
like  → 

After completed, the Dial-up Connections window appears.

Enter User name and Password for telephone numbers of service provider.



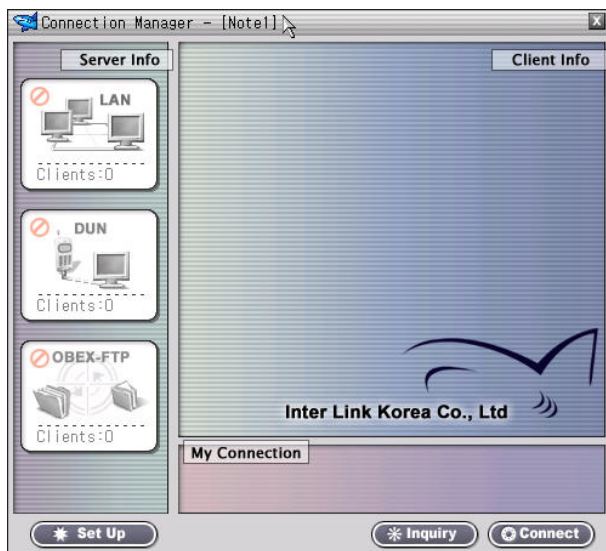
In tray at the bottom right, bubble menu including its downloading speed rate displays.



Let's try to connect to Internet using Explorer .

7.2.3. How to Use File Transfer (OBEX-FTP)



Install BlueShark Manager both Server and Client.

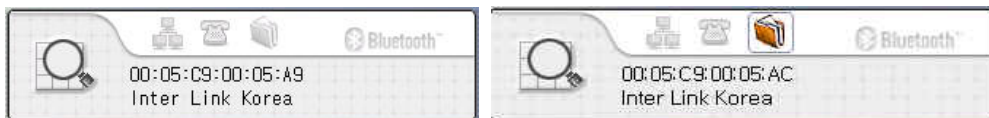






Select OBEX-FTP at the bottom in sub-window from Server Info.



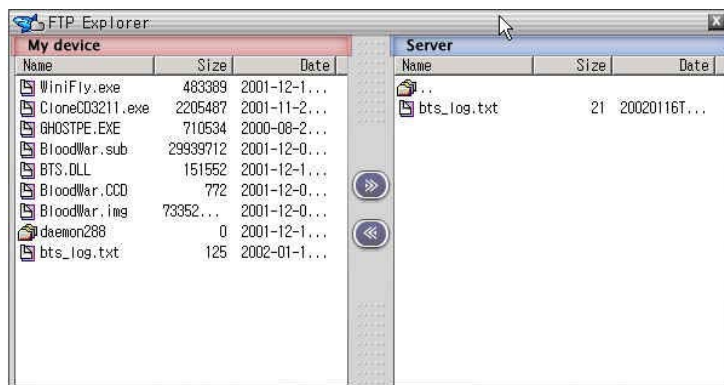


From Client Computer, Click  button so that finds out to other Bluetooth devices including Server computer. After detected Server, click  button in order to know what kinds of service can get from Server computer.

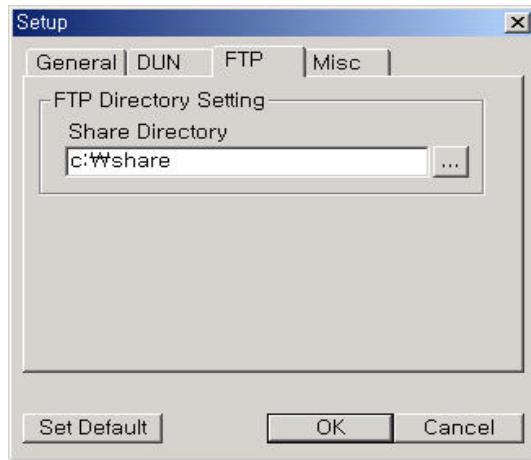


Click  and select  button or double-click this icon, and then color fills up as like  .

The FTP Explorer shows sharing files in the Server and Client, and select file either Server file or Client file and then click arrow button for giving or taking file.



Click Setup in the part of Server, and then select FTP tab in order to change the default of directory or folder of Server and Client if the customer wants to change for sharing folder.

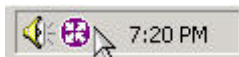


8. How to Use WinRoute.

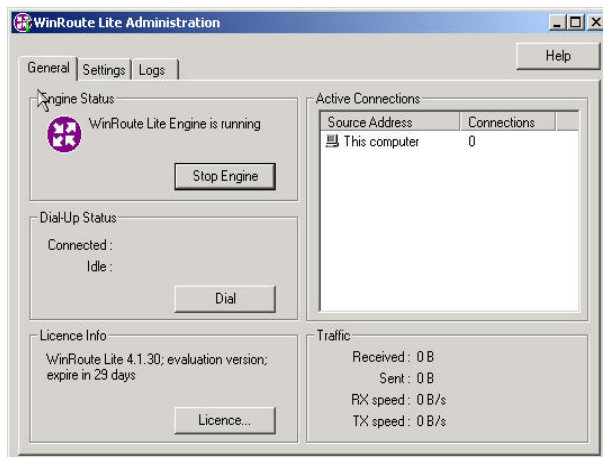
If Client doesn't connect to Internet through Server using the function of sharing LAN even though Server has been connected to the Internet, in this case almost Server should need to install Route program in order to share the Connection with Client PCs.

How to install Route software?

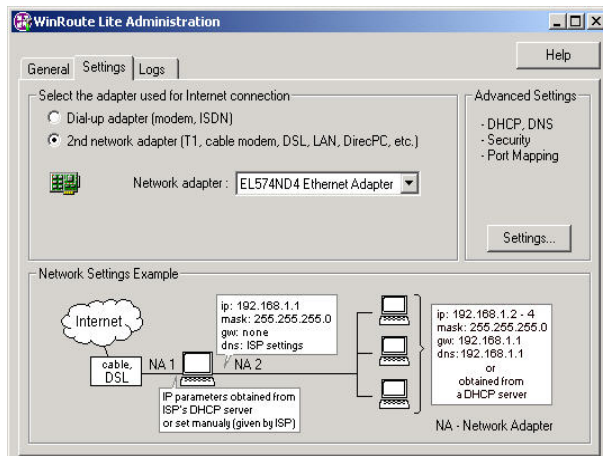
- ① Insert CD into Server computer
- ② Select Route folder and install WinRoute and the PC will be rebooted automatically.
- ③ After rebooted, automatically displays icon of WinRoute in the tray.



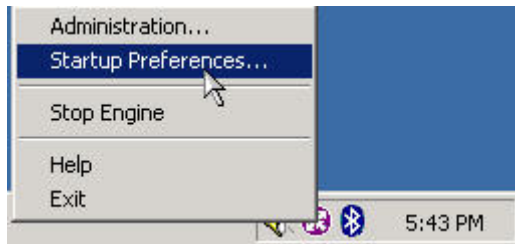
- ④ Double-click icon in the tray and appears its window



- ⑤ Select Setting tab and check the 2nd Network Adapter box.



- ⑥ Click-right on WinRoute icon in the tray, and select Startup Preferences.



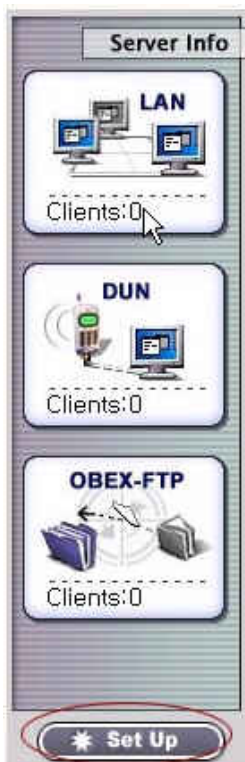
- ⑦ Check Show icon in systray (recommended) box and then Click OK.



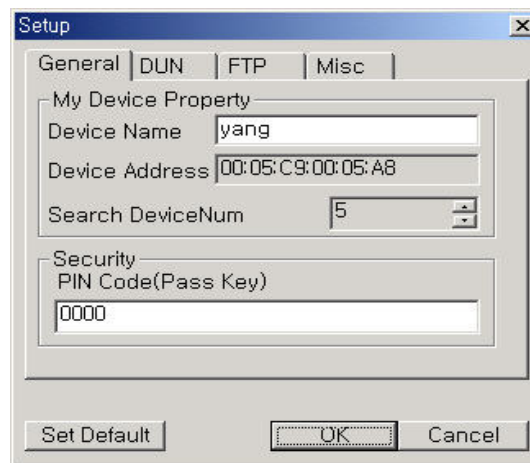
- ⑧ After finished, reboot the Server computer, try to access Internet from Server and then operate WinRoute.
- ⑨ For access to Server from Client, follow "7.2.1 How to Share LAN.

9. Configuring the Server of BlueShark Manager

You can easily configure the BlueShark Manager in the Set up which located at the bottom of Server Info. Just click the Set up like below picture, which gives you changing the options and (or) defaults for your convenience.



When click Set Up button, you can see Setup menu for the reference or to change default mode.



There are a number of important settings here, which are reviewed in the following list.

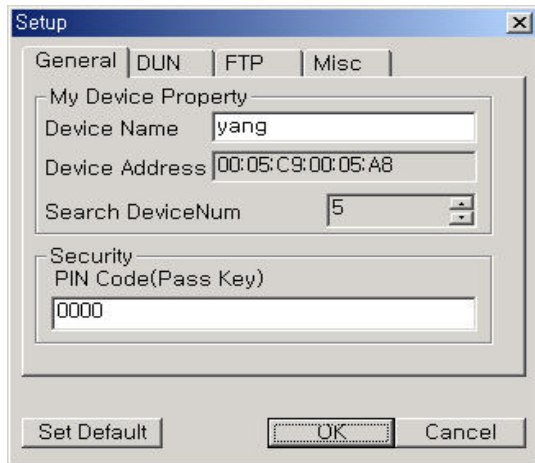
- **General**

Through General tab, you can change the name of device in My Device Property and then click OK.

In order to pause temporary of BlueShark function, check a box.

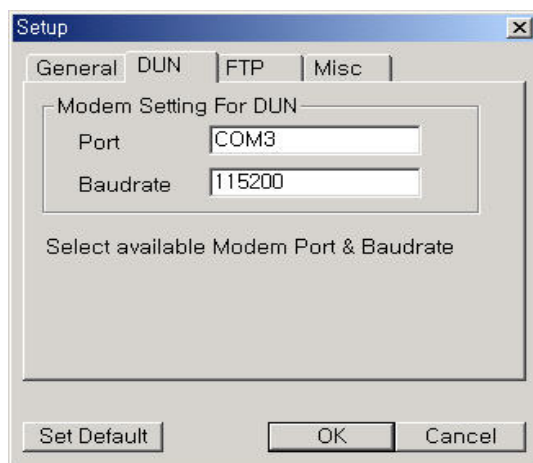
- **PIN Code**

In order to save security connections between computers and other Bluetooth devices, need to type PIN code (Pass key) for connection.



- **DUN**

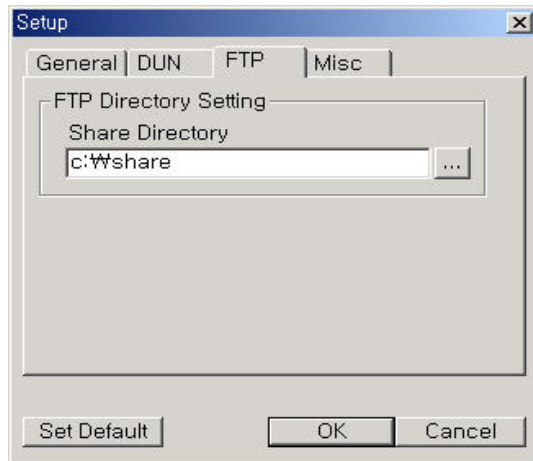
Through DUN tab, you can change default of COM port and Baud rate.



- **FTP**

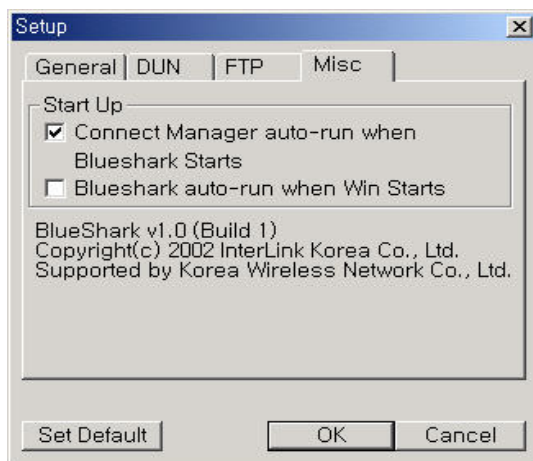
Select FTP tab in order to change the default of directory shared for Server and Client.

If you want to provide folder My document for sharing files or folder, just change the default folder from 'Share' to 'My document' or other something what you want accordingly.



- **Misc**

Through Misc tab If you check box of Connect Manager auto-run, the BlueShark manager will be automatically started when your computer started.



10. Customer Service

Inter Link Korea Co., Ltd

www.ilk21.com

w3master@ilk21.com

Tel : 31-304-1556

Fax : 31-304-1560

Please contact to an authorized Inter Link Korea agent in the nearest around you.

11. Product Specifications

Range of Using Frequency	2402MHz ~ 2480MHz
Average Frequency	2441MHz
Dimensions	21.0mm X 65.3mm X 8.3mm
Weight	10.5g ±0.5g
Power Class Type of Bluetooth	Class 2 (0.3 dbm ~ 4dbm)
Temperature	-20 °C ~ +50 °C
Moisture	5 % ~ 95 %

12. Notifications

This equipment has been tested and founded to comply with the limits for a Class B digital device, pursuant to Part 15 of the FCC Rules. These limits are designed to provide reasonable protection against harmful interference in a residential installation . This equipment generates, uses and can radiate radio frequency energy and, if not installed and used in accordance with the instructions, may cause harmful interference to radio communications. However, there is no guarantee that harmful interference to radio or television reception, which can be determined by turning the equipment off and on, the user is encouraged to try to correct the interference by one or more of the following measures:

- * Reorient or relocate the receiving antenna.
- * Increase the separation between the equipment and receiver.
- * Connect the equipment into an outlet on a circuit different from that to which the receiver is connected.
- * Consult the dealer or an experienced radio/TV technician for help.

This device complies with Part 15 of the FCC Rules and with RSS-210 of Industry Canada.

Operation is subject to the following two conditions:

- (1) this device may not cause harmful interference, and
- (2) this device must accept any interference received, including interference that may cause undesired operation.

The user's manual or instruction manual for an intentional or unintentional radiator shall caution the user that changes or modifications not expressly approved by the party responsible for compliance could void the user's authority to operate the equipment.

Warning : Changes or modifications made to this equipment not expressly approved by Inter Link Korea may void the FCC authorization to operate this equipment.

13. Product Warranty

Warranty registration

Product Warranty

Your BlueShark comes with a one-year hardware warranty. Inter Link Korea Co. Ltd., warrants BlueShark against defects in material and workmanship for a period of one year from the date of purchase from Inter Link Korea or an authorized Inter Link Korea agent.

Product, Name	BlueShark	Model name	
Purchased date	day month year	SERIAL NO.	
Agency		Sales fee	

Uncharged Repairs

This warranty applies uncharged repairs only for a period of one year from the date of purchasing from Inter Link Korea or an authorized Inter Link Korea agent.

Specification		Compensation Specifications	
		Within Warranty Period	After warranty Period
In case of serious problem within 10days of purchase		Replacemen Or Refund	
In case of malfunction occurring Replacement under Proper use within 1 month of purchase		Replacement	
Reparable	Up to 3 rd repeat of the same problem	Unchaarged repair	Charged repair
	4 th repeat of the same problem	Replacement Or Refund	Charged repair
Irreparable	Spare parts available, but when impossible to repair (within spare refund part retention period)	Replacement Or Refund	Replacement, after deducted depreciation of fixed price
	When impossible to repair due to absence of spar parts (within spare parts retention period)	Replacement or Refund	Refund. after deducted Depreciation of Fixed price

Charged Repairs ;

1. In case of no defects ;

Please read the manual carefully.

* Without disassembling, handling simple adjustments	Charged repair From 2nd
* Damage to the parts caused by product-moving. House-moving or other natural disasters	Charged repair
* Problems caused by not a product defect but by other factors	

2. In case of customer fault ;

Problems caused by careless

Handling by the customer

Unauthorized assembly or disassembly

Problems caused by attempted repair by a Serviceman not authorized by Inter Link Korea