

INSTALLATION INSTRUCTIONS

WARNINGS AND CAUTIONS:

- ON/OFF LED shows status of remote load control.
- To be installed and/or used in accordance with appropriate electrical codes and regulations.
- If you are unsure about any part of these instructions, consult a qualified electrician.
- Vizia™ RF RZCZ1 remote does not control the load, but provides 3-way or 4-way applications to operate with Vizia™ RF switches.
- Recommended minimum wall box depth is 2-1/2".

WARNINGS AND CAUTIONS:

- No traveler wires are needed. Remote controls via radio frequency (RF) technology.
- Can call one (1) scene ON/OFF with advanced Programmer/Controller (see RZCPG).
- Disconnect power at circuit breaker or fuse when servicing, installing or removing fixture.
- Use this device only with copper or copper clad wire. With aluminum wire use only devices marked CO/ALR or CU/AL.

INTRODUCTION

Leviton's Vizia™ RF components are designed to communicate with each other via Radio Frequency (RF) to provide remote control of your lighting. Using RF technology allows Leviton to provide the greatest signal integrity possible. Each module in Leviton's Vizia™ RF component line is a Z-Wave™ enabled device. In a Z-Wave™ network, each device is designed to act as a router. These routers will re-transmit the RF signal from one device to another until the intended device is reached. This ensures that the signal is received by its intended device by routing the signal around obstacles and radio dead spots. The 1-Zone Dimming Controller/Matching Switch Remote is compatible with any Z-Wave™ enabled network, regardless of the manufacturer and can also be used with other devices displaying the Z-Wave™ logo.

FEATURES

- 3-way or 4-way control without traveler wires
- Controls dimming of load
- ON/OFF LED indicates status of load
- Two way communication to provide status from dimmers/switches
- RF reliability
- Ease of installation – No new wiring
- Compatible with other Z-Wave™ enabled devices

Tools needed to install your 1-Zone Controller:

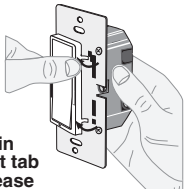
Slotted/Phillips Screwdriver
Pencil

Electrical Tape
Cutters

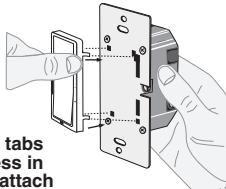
Pliers
Ruler

Changing the color of your 1-Zone Controller:

Your 1-zone controller includes three color options. The controller ships with the White frame attached. To change color of frame, proceed as follows:



Push in side at tab to release



Line up tabs and press in side to attach

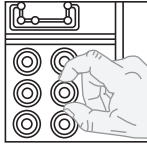
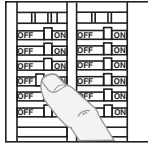
INSTALLING YOUR 1-ZONE CONTROLLER

NOTE: Use check boxes ☒ when Steps are completed.

Step 1



WARNING: TO AVOID FIRE SHOCK OR DEATH; TURN OFF POWER at circuit breaker or fuse and test that power is off before wiring!

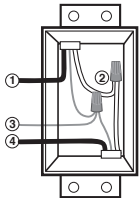


Step 2



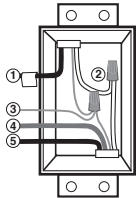
Identifying your wiring application (most common):

NOTE: If the wiring in your wall box does not resemble any of these configurations, consult a qualified electrician.



Single Pole

1. Line (Hot)
2. Neutral
3. Ground
4. Load



3-Way

1. Line or Load (*see important instruction*)
2. Neutral
3. Ground
4. First Traveler – note color
5. Second Traveler – note color

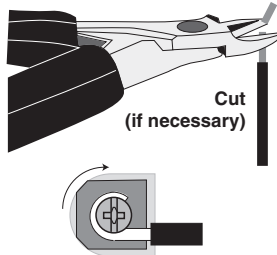
IMPORTANT : For 3-Way applications, note that only one (1) switch can be controlled by the 1-zone controller.

Step 3



Preparing and connecting wires:

This 1-zone controller can be wired using side wire terminal screws or through backwire openings. Choose appropriate wire stripping specifications accordingly.



Cut (if necessary)

5/8" (1.6 cm)

Strip Gage (measure bare wire here)

Side Wire Connection

Side wire terminals accept #14 AWG solid wire copper only.

Back Wire (either hole may be used)

Back wire openings use #14-12 AWG solid wire copper only.

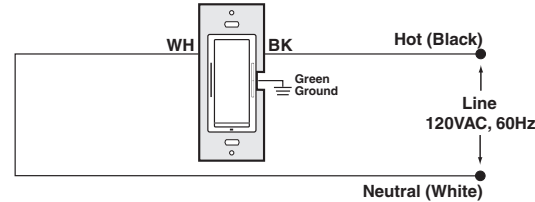
- Make sure that the ends of the wires from the wall box are **straight (cut if necessary)**.

Step 4



Wiring Application:

1-Zone Controller



WIRING 1-ZONE CONTROLLER:

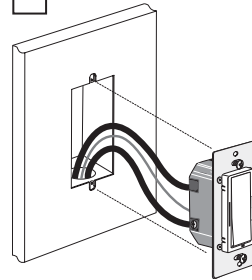
Connect wires per WIRING DIAGRAM as follows:

- Green or bare copper wire in wall box to Green terminal screw.
- Line Hot wall box wire to terminal screw marked "BK".
- Line Neutral wall box wire to terminal screw marked "WH".
- **Proceed to Step 5.**

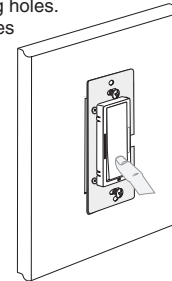
Step 5



Testing your 1-Zone Controller prior to mounting in wall box:



- Position all wires to provide room in outlet wall box for device.
- Ensure that the word "TOP" is facing up on device strap.
- Partially screw in mounting screws in wall box mounting holes.
- **NOTE:** Dress wires with a bend as shown in diagram in order to relieve stress when mounting device.



- Restore power at circuit breaker or fuse.
- LED should turn ON.
- **If LED does not turn ON, refer to the TROUBLESHOOTING section.**

Step 6



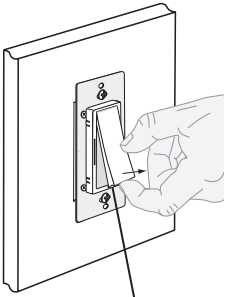
Including 1-Zone Controller into Z-Wave™ Network:

NOTES:

- If using a non-Leviton Programmer/Controller, refer to the Programmer/Controller instruction sheet for Including a device.
- 1-zone controllers included into a Z-Wave™ network must be updated after you have included all other devices.
- A) If using a Leviton Z-Wave™ Programmer/Controller, Cat. No. RZCPG, press the Menu button and scroll down to System Setup. Press the center button to select System Setup Menu. Press the center button to select Network. Press the center button to select Update cntnl. Press rocker on the 1-zone dimming controller.

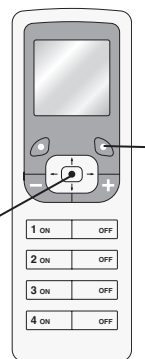
Step 6 cont'd

- B) If using RZCPG Programmer/Contoller, you will be prompted to place 1-zone controller into programming mode.
- C) To access Program mode, engage the air gap switch by gently pulling the bottom of the push pad until it lifts out of the frame and a click is heard (**refer to figure**). Wait 5 seconds and then press the push pad back into the frame and hold push pad until the LED flashes Amber. Release the push pad and the LED should blink Amber. You are now in Programming mode.
- NOTE:** If the LED on the 1-zone controller turns solid Red while including, there has been a communication error. Refer to Troubleshooting section.
- D) While standing close to the 1-zone controller (approximately 2-5 ft.), press the center button to <Include> device in the network. **NOTE:** Only one device may be included at any time.
- E) The Primary Programmer/Controller will assign a node ID number (Name) for this device.
- NOTE:** This ID number (Name) will be stored in the Programmer/Controller to be used for future reference.
- NOTE:** You may name or edit the node of this device at this time.
- F) **The 1-zone controller is now installed in the network.**
- G) After all devices are included into the network, the controller must be updated to allow it to be associated with all devices in the network. To update controller proceed as follows:
- If using a non-Leviton Programmer/Controller, refer to the Programmer/Controller instruction sheet for updating controller.
 - If using Leviton Z-Wave™ Programmer/Controller, Cat. No. RZCPG, press the Menu button and scroll down to System Setup. Press the center button to select System Setup Menu. Press the center button to select Network. Press the center button to select Update cntnl. Press rocker on the 1-zone dimming controller.
 - Wait until the RZCPG Programmer/Controller confirms completion. Update is done.



Gently lift bottom of push pad out

Cat. No. RZCPG

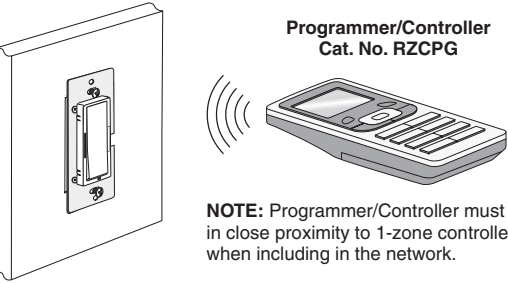


Menu Button

Center Button

NOTE: If the 1-zone controller has been successfully Included in the network and the user tries to Include it again without first excluding it from the network, the controller will retain the first node ID it had received and ignore the second.

Step 6 cont'd Including 1-Zone Controller into Z-Wave™ Network:



Step 7 Excluding 1-Zone Controller from Z-Wave™ Network:

- A) If using a Leviton Z-Wave™ Programmer/Controller, Cat. No. RZCPG, press the Menu button and scroll down to System Setup. Press the center button to select System Setup Menu. Press the center button to select Network. Scroll down and press the center button to <Exclude Node>.
- B) If using RZCPG Programmer/Contoller, you will be prompted to place 1-zone controller into programming mode.
- C) To access Program mode, engage the air gap switch by gently pulling the bottom of the push pad until it lifts out of the frame and a click is heard (refer to figure). Wait 5 seconds and then press the push pad back into the frame and hold push pad until the LED flashes Amber. Release the push pad and the LED should blink Amber. You are now in Programming mode.
- NOTE: If the LED on the 1-zone controller turns solid Red while excluding, there has been a communication error. Refer to Troubleshooting section.
- D) While standing close to the 1-zone controller (approximately 2-5 ft.), press the center button to <Exclude> device from the network.

Factory Default:
If your 1-zone controller is not responding, or you are unable to control it after you have tried to Include/Exclude it multiple times, it may be necessary to reset the 1-zone controller to its original factory settings. To accomplish this, proceed as follows:

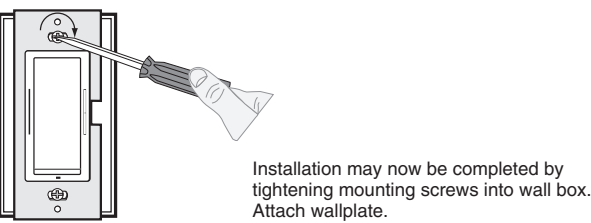
- On the 1-zone controller, engage the air-gap switch by gently pulling the bottom of the push pad until it lifts completely out of the frame and a click is heard. (refer to figure). Wait 5 seconds and then press the push pad back into the frame and hold push pad until the locator LED flashes Amber and turns solid Red. The 1-zone controller is now reset. Once the controller is reset, it will be necessary to Re-Include it to a network before it can be used.

CAUTION: SETTING A DEVICE TO A FACTORY DEFAULT DOES NOT EXCLUDE THAT DEVICE FROM A NETWORK. THE EXCLUSION PROCEDURE MUST STILL BE FOLLOWED TO REMOVE THE DEVICE FROM THE PRIMARY CONTROLLER'S INFORMATION TABLE. FAILURE TO DO SO MAY RESULT IN SYSTEM THAT IS SLOW TO RESPOND, OR MAY FAIL TO RESPOND TO SOME DEVICES.

Step 8 1-Zone (Matching Remote) Application Association:

- To control a Z-wave™ enabled device from 1-zone controller you must associate the device to the controller.
- If using a non-Leviton Programmer/Controller, refer to the Programmer/Controller instruction sheet for Associating a device.
- A) If using RZCPG Programmer/Controller, press the Menu button and scroll down to System Setup. Press the center button to select System setup Menu.
- B) Choose <Controller Association>.
- C) Choose your Controller.
- D) Choose button one.
- E) Choose <Association> (where you choose the Z-Wave™ enabled device from a list). Choose your device by pressing the <+> button (pressing the <-> button de-selects the device). This is the device that will react to an (ON/OFF) command.
- F) Select area ON/OFF.
- NOTE: For matching remote application you can associate only one (1) dimmer. You also must select area ON/OFF action (see Primary Programmer/Controller instruction sheet).

Step 9 1-Zone Controller Mounting: TURN OFF POWER AT CIRCUIT BREAKER OR FUSE.



Step 10 Restore Power: Restore power at circuit breaker or fuse. Installation is complete.

OPERATION

Matching Remote Application:

Push Pad (Default settings)

Turn ON from OFF position:

Tap – Lights turn ON, LED turns OFF.

Turn OFF from ON position:

Tap – Lights turn OFF, LED turns ON.

DIM/BRIGHT Bar

BRIGHTEN:

Press the upper half of the DIM/BRIGHT Bar – Lights brighten to desired level.

DIM:

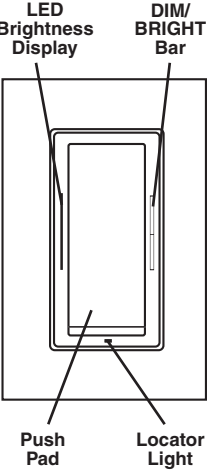
Press the lower half of the DIM/BRIGHT Bar – Lights dim to desired level.

If you continue to hold, the lights will DIM to minimum level and then turn OFF.

NOTE: When lights are OFF you can change the light level that the lights will turn ON to using the DIM/BRIGHT Bar.

If there is a power outage, when the power is restored, the lights will return to the last setting before the power interruption.

Cleaning: Clean with a damp cloth. DO NOT use chemical cleaners.



For additional information, contact Leviton's Techline at 1-800-824-3005 or visit Leviton's website at www.leviton.com

U.S. & Foreign Patents Pending
Copyright© 2006 Leviton Manufacturing Co., Inc.
All Rights Including Trade Dress Rights Reserved

FCC COMPLIANCE STATEMENT

This equipment has been tested and found to comply with the limits for a Class B Digital Device, pursuant to Part 15 of the FCC Rules. These limits are designed to provide reasonable protection against harmful interference in a residential installation. This equipment generates, uses, and can radiate radio frequency energy and, if not installed and used in accordance with the instructions, may cause harmful interference to radio communications. However, there is no guarantee that interference will not occur in a particular installation. If this equipment does cause harmful interference to radio or television reception, which can be determined by turning the equipment OFF and ON, the user is encouraged to try to correct the interference by one or more of the following measures:

- Reorient or relocate the receiving Antenna.
- Increase the separation between the equipment and the receiver.
- Connect the equipment into an outlet on a circuit different from that to which the receiver is connected.
- Consult the dealer or an experienced radio/tv technician for help.

TROUBLESHOOTING

- Lights Flickering**
 - Lamp has a bad connection.
 - Wires not secured firmly under terminal screws of 1-scene controller and/or remote.
- Light does not turn ON and Locator LED does not turn ON**
 - Circuit breaker or fuse has tripped.
 - Lamp is burned out or lamp switch is OFF.
 - Lamp Neutral connection is not wired.
 - If 1-scene controller is powered up and LED does not turn ON, check wiring.
 - If no lights react to a button press, then the association of devices was not done properly. Consult troubleshooting guide at www.leviton.com.
- Remote does not operate lights**
 - Check association.
 - Ensure that controller was properly updated.

LIMITED 5 YEAR WARRANTY AND EXCLUSIONS

Leviton warrants to the original consumer purchaser and not for the benefit of anyone else that this product at the time of its sale by Leviton is free of defects in materials and workmanship under normal and proper use for five years from the purchase date. Leviton's only obligation is to correct such defects by repair or replacement, at its option, if within such five year period the product is returned prepaid, with proof of purchase date, and a description of the problem to **Leviton Manufacturing Co., Inc., Att: Quality Assurance Department, 59-25 Little Neck Parkway, Little Neck, New York 11362-2591**. This warranty excludes and there is disclaimed liability for labor for removal of this product or reinstallation. This warranty is void if this product is installed improperly or in an improper environment, overloaded, misused, opened, abused, or altered in any manner, or is not used under normal operating conditions or not in accordance with any labels or instructions. **There are no other or implied warranties of any kind, including merchantability and fitness for a particular purpose**, but if any implied warranty is required by the applicable jurisdiction, the duration of any such implied warranty, including merchantability and fitness for a particular purpose, is limited to five years. **Leviton is not liable for incidental, indirect, special, or consequential damages, including without limitation, damage to, or loss of use of, any equipment, lost sales or profits or delay or failure to perform this warranty obligation**. The remedies provided herein are the exclusive remedies under this warranty, whether based on contract, tort or otherwise.

LEVITON INSTRUCTION SHEET/MANUAL SPECIFICATIONS

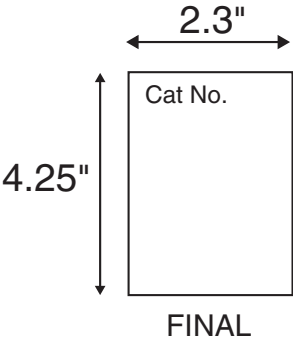
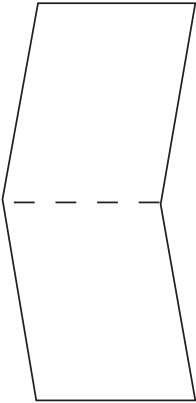
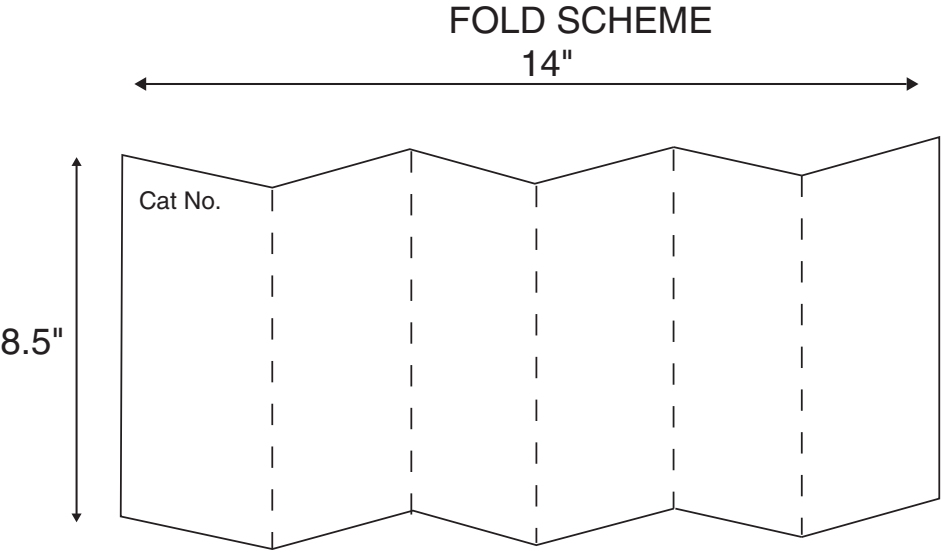
- Artwork No/Rev Level: DI-000-RZCZ1-00A-X3
- Color(s): Black over _____
1. _____ 2. _____
3. _____ 4. _____
- Font Families: Helvetica
- Material
Type: 40 Lb. offset
- Coating: ☐ _____
- Paper size:
Overall size: 14" X 8.5"
Final fold size: 2.3" X 4.25"

DOCUMENTATION

- ECO No.: N/A
- Artist: H2D Date: 3/27/06

The information in this document is the exclusive PROPRIETARY property of LEVITON MANUFACTURING COMPANY, INC. It is disclosed with the understanding that acceptance or review by the recipient constitutes an undertaking by the recipient. (1) to hold this information in strict confidence, and (2) not to disclose, duplicate, copy, modify, or use the information for any purpose other than that for which disclosed.

Copyright © 1997 Leviton Mfg. Co. Inc.
Unpublished, All Rights Reserved



— — — — — Fold Line