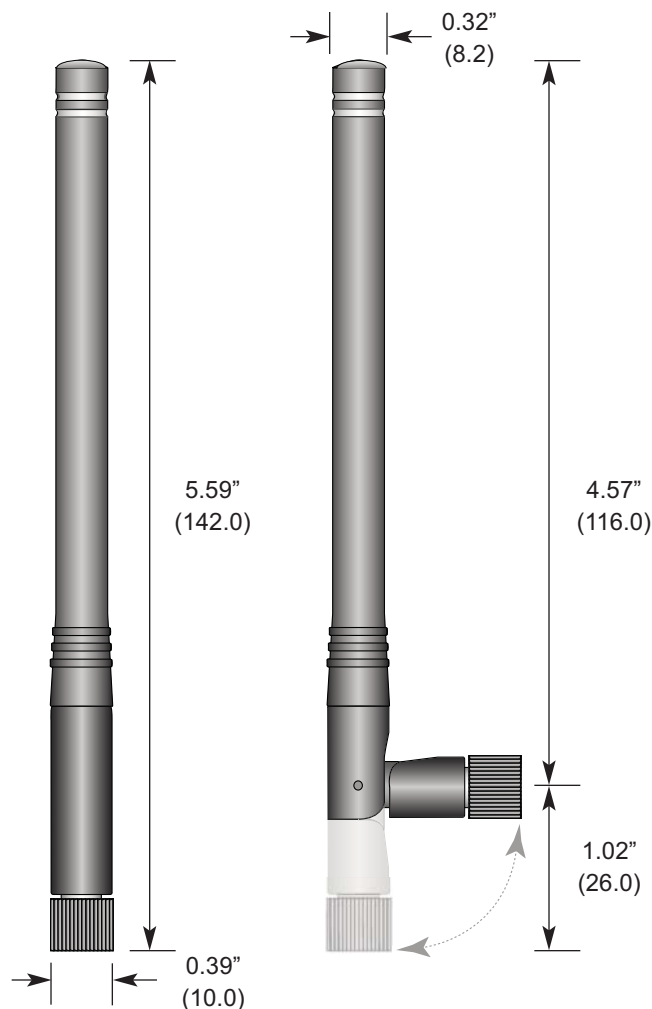


Product Dimensions



Description



HWR Series antennas deliver outstanding performance in a rugged and cosmetically attractive package. The articulating base allows the antenna to tilt 90 degrees and rotate 360 degrees. The antennas attach via a standard SMA or Part 15 compliant RP-SMA connector. Custom colors and connectors are available for volume OEM customers.

Features

- Low cost
- Tilts and rotates
- Omni-directional pattern
- Outstanding VSWR
- Rugged & damage-resistant
- Standard SMA or Part 15 compliant RP-SMA connector
- Custom colors and terminations for volume OEMs
- Use with plastic* or metal enclosures
- Internal O-ring seal on connector

* Requires proximity ground plane

Electrical Specifications

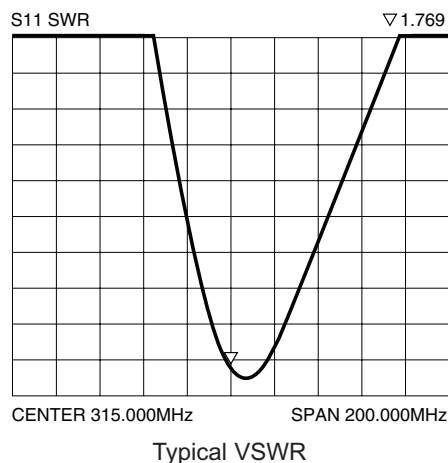
- Center Freq. 315MHz
- Recmd. Freq. Range 305-325MHz
- Wavelength 1/4-wave
- VSWR <2.0 typ. at center
- Impedance 50 ohms
- Connector RP-SMA or SMA

Electrical specifications and plots measured on 4.00" x 4.00" reference ground plane

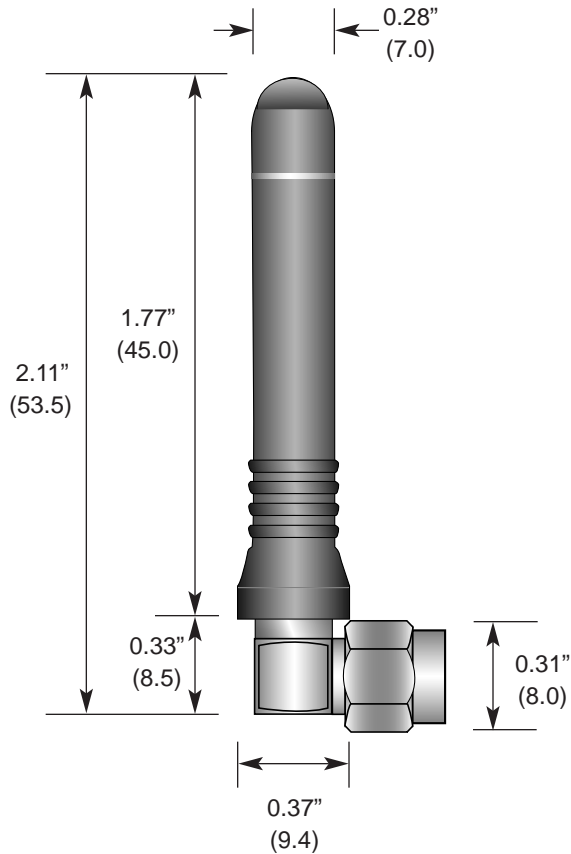
Ordering Information

- ANT-315-CW-HWR-RPS (with RP-SMA connector)
- ANT-315-CW-HWR-SMA (with SMA connector)

Polar Plot & Gain Information



Product Dimensions



Description



The RCS Series is ideally suited for products requiring an attractive, yet compact, 1/4-wave antenna in a right-angle form factor. The antennas attach via a Part 15 compliant RP-SMA connector.

Features

- Reduced height helical whip
- Right-angle mount
- Excellent performance
- Omni-directional pattern
- Fully weatherized
- SMA or Part 15 compliant RP-SMA connector
- Use with plastic* or metal enclosures

* Requires proximity ground plane

Electrical Specifications

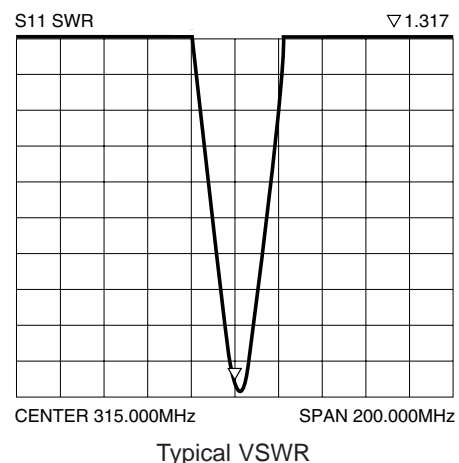
- Center Freq. 315MHz
- Bandwidth 10MHz
- Wavelength 1/4-wave
- VSWR <2.0 typ. at center
- Impedance 50 ohms
- Connector RP-SMA

Electrical specifications and plots measured on 4.00" x 4.00" reference ground plane

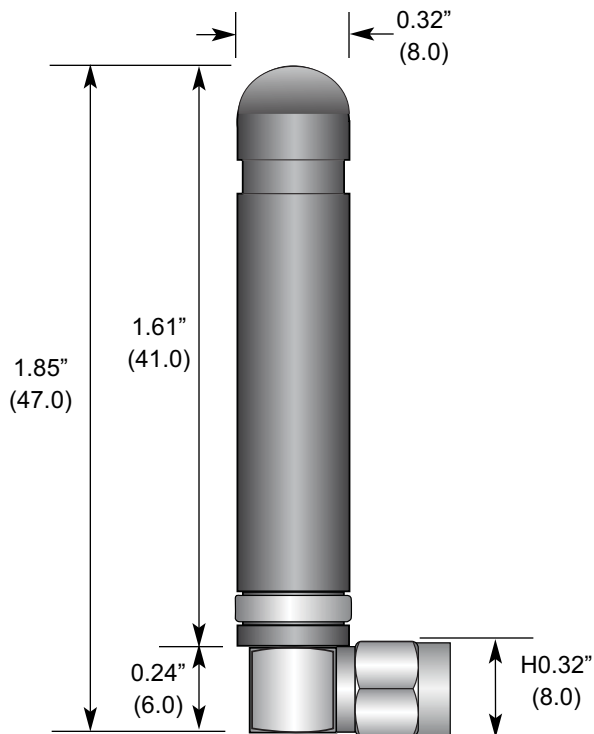
Ordering Information

- ANT-315-CW-RCS

VSWR Graph



Product Dimensions



Description



The RAH Series utilizes a helical element to greatly reduce the physical length of the antenna housing. They are ideal for products requiring an ultra-compact, aesthetically pleasing antenna in a right angle form factor. Despite their tiny size, they are ruggedly constructed and able to withstand punishing environments just like our larger whips. The antennas attach via a Part 15 compliant RP-SMA connector.

Features

- Low cost
- Ultra-compact
- Right angle mount
- Excellent performance
- Omnidirectional pattern
- Fully weatherized
- Flexible main shaft
- Rugged & damage-resistant
- Part 15 compliant RP-SMA connector
- Use with plastic* or metal enclosures

* Requires proximity ground plane

Electrical Specifications

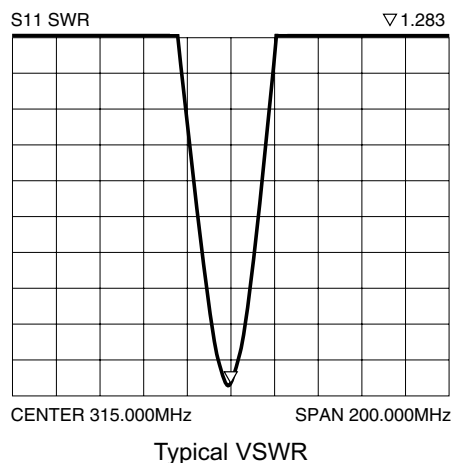
- Center Freq. 315MHz
- Bandwidth 7MHz
- Wavelength 1/4-wave
- VSWR <1.9 typ. at center
- Impedance 50 ohms
- Connector RP-SMA

Electrical specifications and plots measured on 4.00" x 4.00" reference ground plane

Ordering Information

- ANT-315-CW-RAH

VSWR Graph





Antenna Info: WSCOM-03W

14 Mar 2012

List of Antennas

All antennas listed utilize an RP-SMA connector. These are all $\frac{1}{4}$ Wave Monopole antennas.

Maximum gain (External 50 Ohm passive antenna): ≤ 0 dBi

Shipping Antenna (1/4 Wave antenna):

This antenna is shipped with product and has the greatest gain:

- 1) Wellshow AR026WSG2519N: 315MHz, 50 Ohms, articulating base, VSWR ≤ 2.0 , 151.2mm
 - a. Max Gain: ≤ 0 dBi

Alternative Antennas (1/4 Wave antenna):

These antennas are not shipped with the product but can be used in case the original is lost or needs replaced. All of them have slightly less gain than the Wellshow being shipped with the product.

- 1) Antenna Factor ANT-315-CW-HWR-RPS: 315MHz, 50 Ohms, articulating base, VSWR < 2.0 , 142mm
 - a. Max Gain: ≤ -1 dBi
- 2) Antenna Factor ANT-315-CW-RAH: 315MHz, 50 Ohms, right-angle, VSWR < 1.9 , 47mm (53.5mm actual)
 - a. Max Gain: ≤ -11 dBi
- 3) Antenna Factor ANT-315-CW-RCS: 315MHz, 50 Ohms, right-angle, VSRW < 2.0 , 53.5mm
 - a. Max Gain: ≤ -12 dBi

Pictures

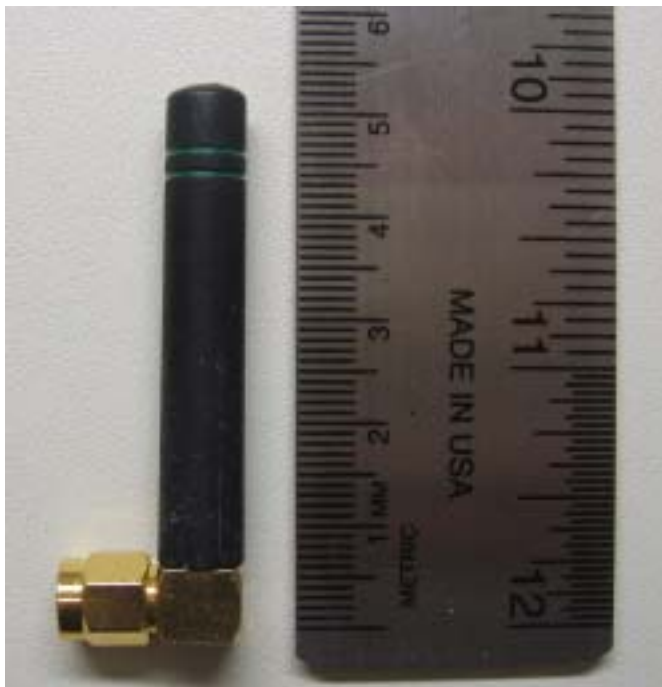


Figure 1. ANT-315-CW-RAH (Antenna Factor)



ANT-315-CW-RCS (Antenna Factor)



Figure 2. ANT-315-CW-HWR-RPS (Antenna Factor)



Figure 3. AR026WSG2519N (Wellshow)



Figure 4. All Antennas