

Test setup photos for RM-91 SAR Compliance Test Report

Test report no.:	Cph_SAR_0542_10	Date of report:	2005-10-17
Template version:	4	Number of pages:	5
Testing laboratory:	TCC Copenhagen Nokia Danmark A/S Frederikskaj DK-1790 Copenhagen V Denmark Tel. +45 33 29 29 29 Fax. +45 33 29 20 01	Client:	Nokia Corporation Nokia House Summit Avenue, Southwood Farnborough Hampshire GU14 0NG UK Tel. +44 1252 866000 Fax. +44 1252 866001
Responsible test engineer:	Leif Funch Klysner	Product contact person:	Stefan Emery
Measurements made by:	Jesper Nielsen / Leif Klysner		
Tested device:	RM-91		
FCC ID:	QFXRM-91	IC:	661Z-RM91
Supplement reports:	Cph_SAR_0542_01		
Documentation:	The documentation of the testing performed on the tested devices is archived for 15 years at TCC Nokia.		
Test results:	<p>The tested device complies with the requirements in respect of all parameters subject to the test. The test results and statements relate only to the items tested. The test report shall not be reproduced except in full, without written approval of the laboratory.</p>		

Date and signatures: 2005-11-14

For the contents:

CONTENTS

1.	SUMMARY OF SAR TEST REPORT.....	3
1.1	TEST DETAILS.....	3
1.2	PICTURE OF THE DEVICE.....	3
1.3	TEST POSITIONS.....	4
1.3.1	<i>Against Phantom Head.....</i>	<i>4</i>
1.3.2	<i>Body Worn Configuration</i>	<i>5</i>

1. SUMMARY OF SAR TEST REPORT

1.1 Test Details

Period of test	2005-10-03 to 2005-11-02
SN, HW and SW numbers of tested device	IMEI: 004400/68/162161/9 HW: 4002 SW: 1.0536.0.6 DUT#28450
Batteries used in testing	BL-5B, DUT#28448, 28449, 28454, 28455
Headsets used in testing	HS-23, DUT#28453
Other accessories used in testing	SD-Card, DUT#28409
State of sample	Prototype unit
Notes	-

1.2 Picture of the Device



Front, Closed



Front, open



Side



Back

1.3 Test Positions

1.3.1 Against Phantom Head

Measurements were made in “cheek” and “tilt” positions on both the left hand and right hand sides of the phantom.

The positions used in the measurements were according to IEEE 1528 - 2003 "IEEE Recommended Practice for Determining the Peak Spatial-Average Specific Absorption Rate (SAR) in the Human Head from Wireless Communications Devices: Measurement Techniques".

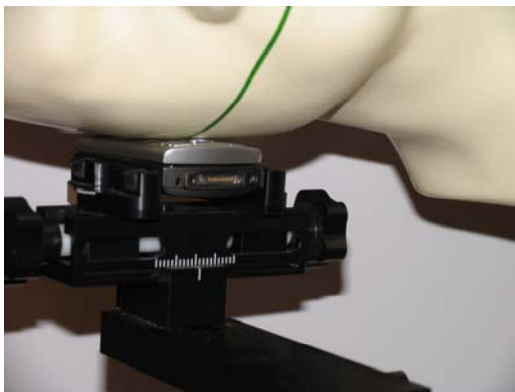


Photo of the device in “cheek” position,
Slide closed

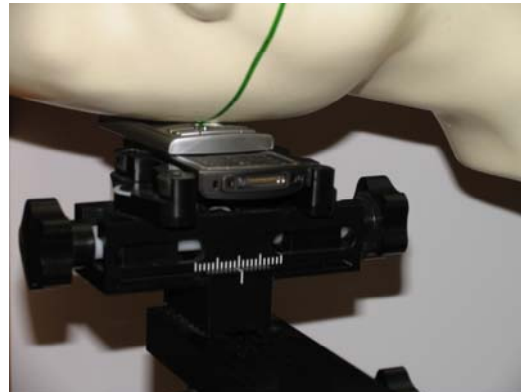


Photo of the device in “cheek” position,
Slide open

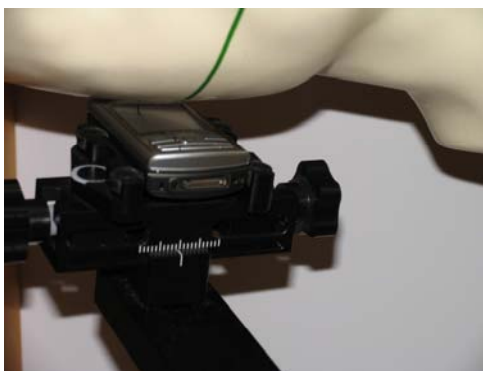


Photo of the device in “tilt” position,
Slide closed

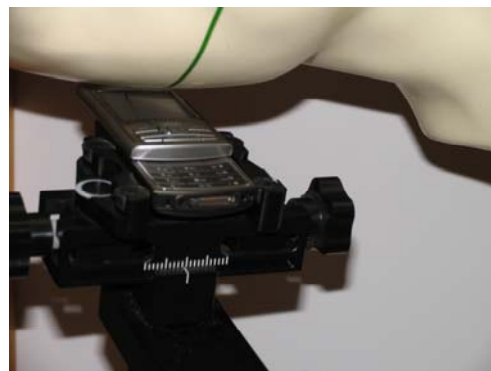


Photo of the device in “tilt” position,
Slide open

1.3.2 Body Worn Configuration

The device was placed in the SPEAG holder using the Nokia spacer and placed below the flat section of the phantom. The distance between the device and the phantom was kept at the separation distance indicated in the photo below using a separate flat spacer that was removed before the start of the measurements. The device was oriented with its antenna facing the phantom since this orientation gives higher results.



Photo of the device positioned for Body SAR measurement.
The spacer was removed for the tests.