

## **FCC NOTICE**

THIS DEVICE COMPLIES WITH PART 15 OF THE FCC RULES.  
OPERATION IS SUBJECT TO THE FOLLOWING TWO CONDITION:  
(1) THIS DEVICE MAY NOT CAUSE HARMFUL INTERFERENCE, AND  
(2) **THIS DEVICE MUST ACCEPT ANY INTERFERENCE RECEIVED, INCLUDING INTERFERENCE THAT MAY CAUSE UNDERSIRED OPERATION.**

This equipment has been tested and found to comply with the limits for a Class B digital device, pursuant to part 15 of the FCC Rules. These limits are designed to provide reasonable protection against harmful interference in a residential installation. This equipment generates, uses and can radiate radio frequency energy and, if not installed and used in accordance with the instructions, may cause harmful interference to radio communication. However, there is no guarantee that interference will not occur in a particular installation. If this equipment does cause harmful interference to radio or television reception, which can be determined by turning the equipment off and on, the user is encouraged to try to correct the interference by one or more of the following measures :

- Reorient or relocate the receiving antenna.
- Increase the separation between the equipment and receiver.
- Connect the equipment into an outlet on a circuit different from that to which the receiver is connected.
- Consult the dealer or an experienced radio/TV technician for help.

NOTE : The manufacturer is not responsible for any radio or TV interference caused by unauthorized modifications to this equipment. Such modifications could void the user's authority to operate the equipment.

## - Table of Contents -

### **Introduction**

What is IP-STATION? .....	p.2
Benefits of Using IP-STATION.....	p.2
Primary Functions of IP-STATION.....	p.2

### **Parts and Functions**

Parts.....	p.2
Functions-Front and Side .....	p.3
Functions-Back .....	p.3

### **How to Use**

#### Starting IP-STATION

- Charging a battery .....p.4
- Booting up .....p.4
- Power off .....p.4

#### Using IP-STATION

- Examining main screen .....p.4
- Main screen descriptions .....p.5
- Accessing Internet .....p.6
- Using Internet Phone .....p.8
- Using Internet Video Conference (1 to 1) .....p.9
- (Video)Chatting with NetWhiteboard .....p.9
- Installing ActiveSync to PC .....p.10
- Connecting IP-STATION to PC .....p.11
- Data synchronization and removal between PC and IP-STATION --p.11

### **Specifications**

Hardware .....	p.13
Software .....	p.13

### **Service Information and Cautions**

Contact .....	p.14
Cautions when dealing with the product .....	p.14
Troubleshooting Guide .....	p.14

## <Introduction>

### What is IP-STATION?

Ip-station, as a portable PAD and a multi-purpose communication device, which provides computing services, Internet access, multimedia, and much more.

### Benefits of IP-STATION

#### Convenient Use

Anyone can use the device with ease.

#### Outstanding Portability

Unlike a desktop PC, the device can be carried conveniently.

#### Great Extendibility and Unlimited Applications

More extendible than any PC, supports various applications.

#### Low Price

Unlike other devices, for which you might have to purchase additional accessories, this device integrates all in one.

### Basic Functions of IP-STATION

- Internet surfing with Internet Explorer, e-mail, etc.
- Availability of various software under Win CE
- Regular telephone, Internet phone
- Built-in camera applications.

## <Parts and Functions >

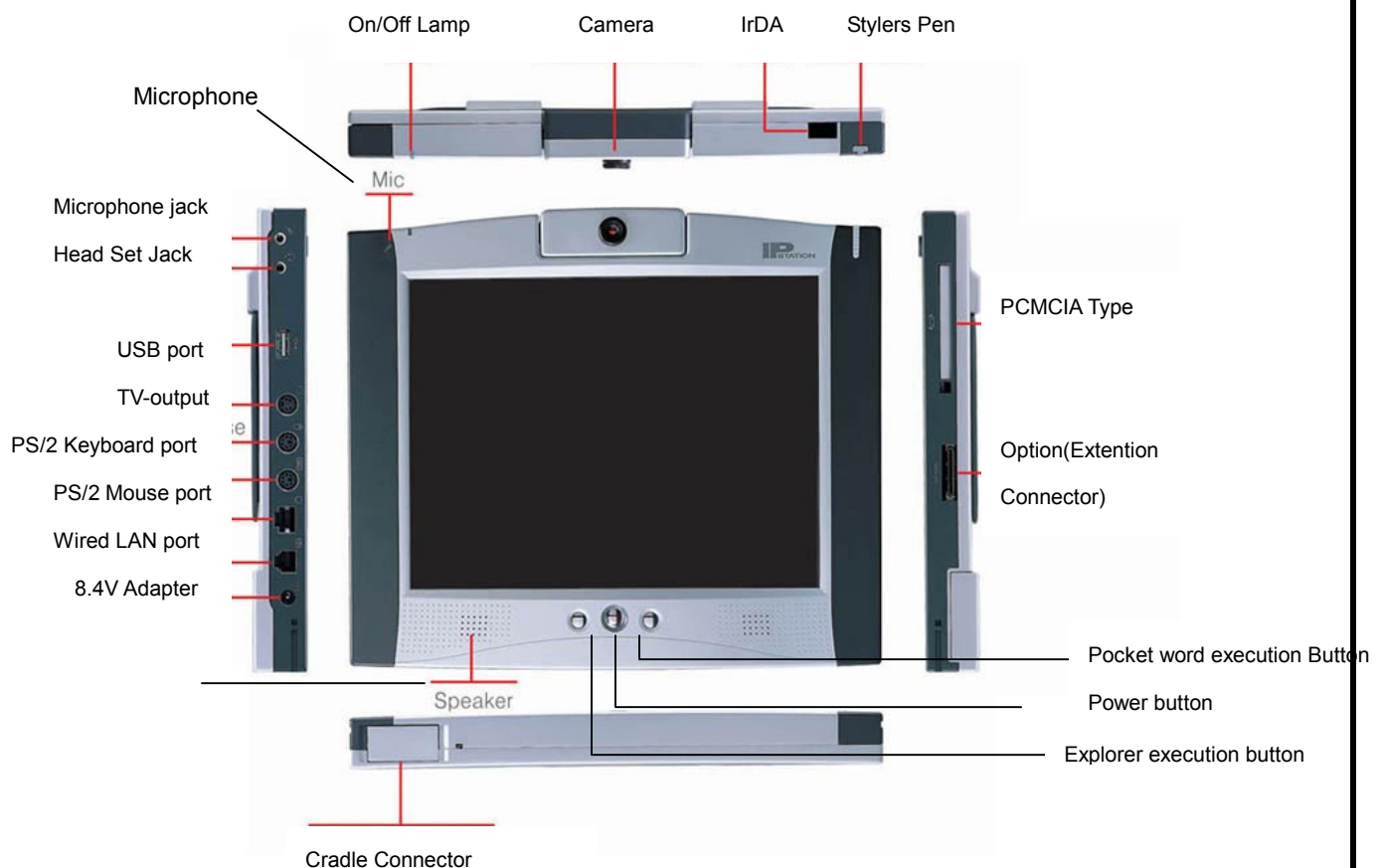
### What is included in your package?

#### Components

- 1) IP-STATION (Built-in battery included)
- 2) Cradle to connect to IP-STATION (Built-in keyboard included)
- 3) Cable & Free voltage Adaptor
- 4) Stylus pen
- 5) Warranty Card
- 6) Customer Registration Card

※ Please note that your actual device may differ a little from the figure below.

## Functions: Front and Side



## Functions: Back

**Soft Reset: Press the big hole on the back.**

*-Use: to change setup of the Network Environment of the Product.*

**Hard Reset: Press small soft hole above the soft reset button.**

*-Use: Use only if the device is malfunctioning or the system is down.*

*Please be aware that using this button erases all the data stored in RAM.*

## <How to Use>

Before you start using the device, read the followings.

## Starting IP-Station

### Charging Battery

1. Connect adaptor and power cable to DC In Adaptor port of IP-STATION and power outlet.
2. Remove the cable when the device is completely charged. (Approximately 2 hours)
  - ※ Power adaptor of IP-STATION is free-voltage . When using 110V, make sure to insert into 110V socket.

### Booting

Press the power button to boot up IP-Station.

### Power Off

You can turn off the system either by pressing the power button or by selecting system shutdown menu from the start menu on the screen.

## Using IP-Station

### Main Screen

When booting is completed, the following picture is displayed on main screen.



## Main Screen Icons

To learn what each icon is for, please refer to the description below.



Home: Main screen



Phone: Internet phone/Visual Communication/Netwhiteboard/ Yellow Pages



Mail: E-Mail management (Inbox)



Internet: Execute Internet Explorer.



Word: Word processing with Pocket Word program.



Setup: System setup screen.



S-Video: Display TV signals.



ActiveSync: Connect desktop to IP-STATION.



Keyboard: Execute soft keyboard program.



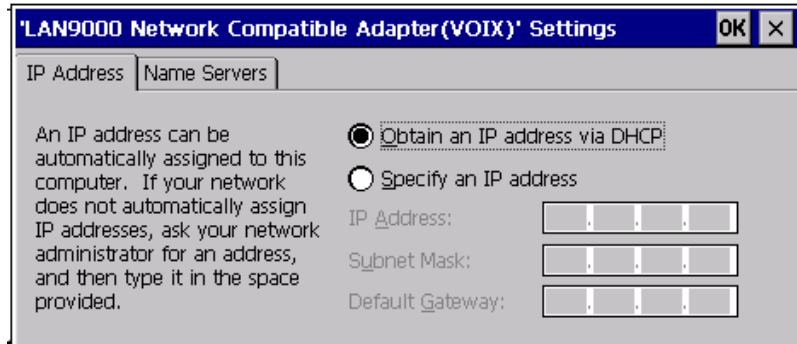
Sound: Adjust volume.

## Accessing Internet

### - Internet access via LAN (with DHCP server)

1. At start Button of Windows Program select Start, Settings, Control Panel and Network in turn.
2. Choose your LAN card and driver in the Network Settings dialog box, and click on the Properties.

And the following screen is shown.

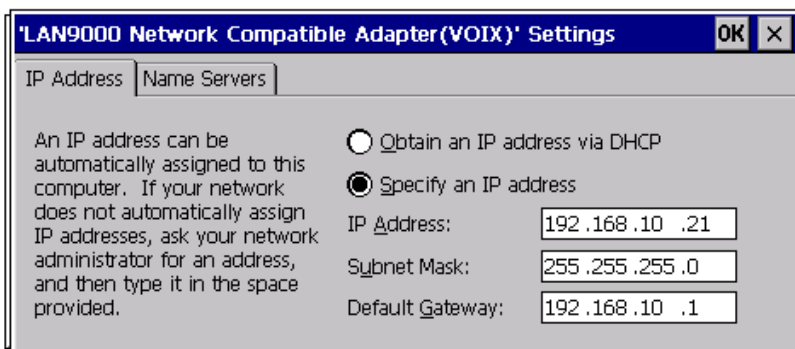


3. Select 'Obtain an IP address via DHCP' option, and click OK to go back to the Network Settings dialog box.

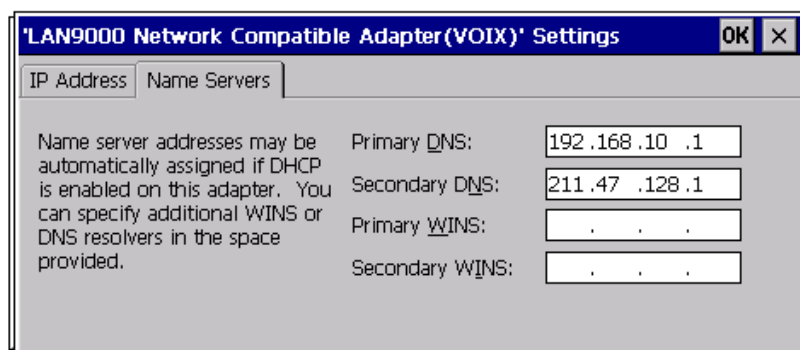
### - Internet access via LAN (without DHCP server)

\* Please contact your network administrator to learn the allocated IP address.

1. At start Button of Windows Program select Start, Settings, Control Panel and Network in turn.
2. Choose your LAN card and driver in the Network Settings dialog box and click on the Properties.
3. Select 'Specify an IP address' and type your IP Address, Subnet Mask, and Default Gateway in turn.



4. Select 'Name Servers' tab and key in the appropriate address for the 'Primary DNS' and 'Secondary DNS' and click OK button.



5. When you are ready for network settings, click OK button. Press reset button on the back of the device to restart your system.
6. Now you can access to the Internet by pressing Internet explorer Button.

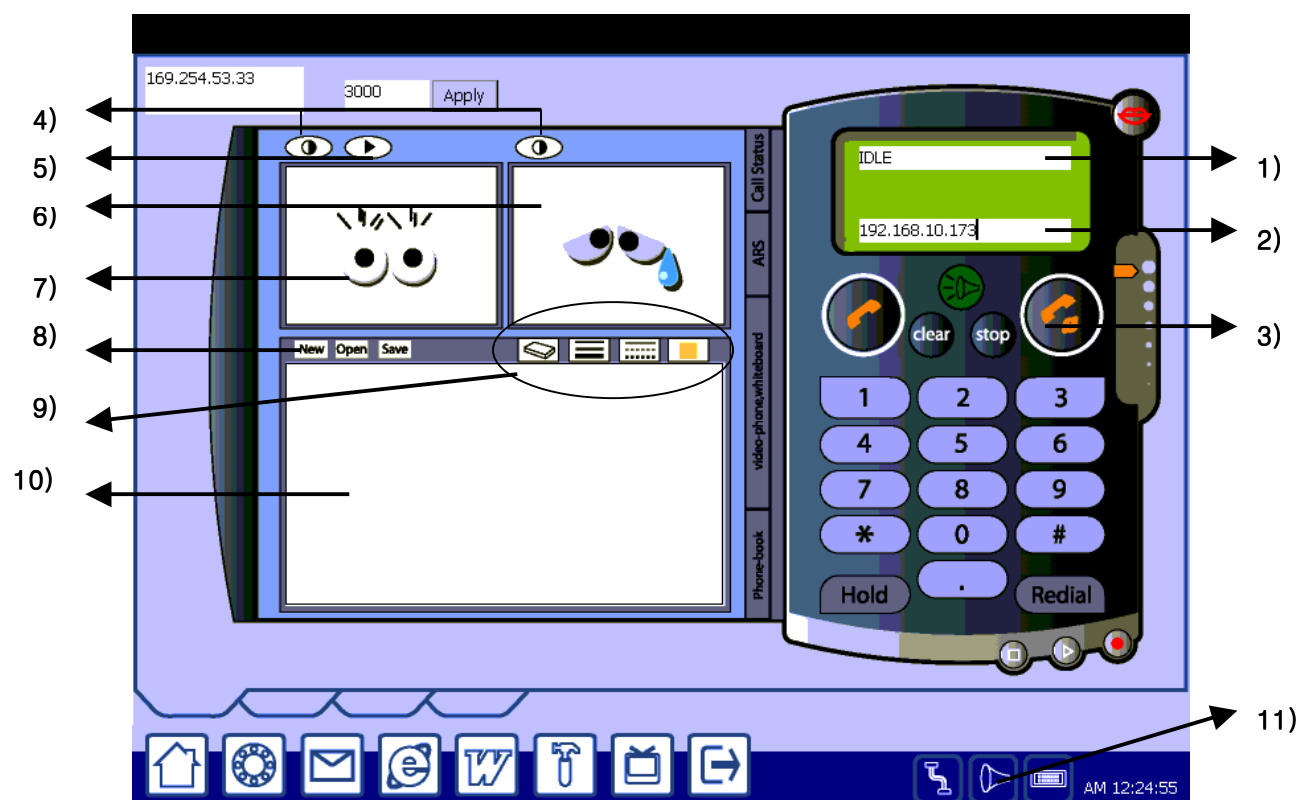
## **- Internet access via wireless LAN**

1. Make sure AP is properly connected. Install LAN card driver.
2. At start Button of Windows Program, select Start, Settings, Control Panel and Network in turn.
3. Choose the wireless LAN card from the network driver list in the Network Settings dialog box, and click Properties. For the following steps, follow the same process as in "Internet Access via LAN".
4. Click OK button when Network setting is completed. Insert your LAN card into PCMCIA slot. (If the card is already there, eject the card and put it back again.)
5. Reset IP-STATION and run the browser.

## Using Internet Phone

### - Making a Phone Call

- 1) Select  Icon in IP-Station's Main screen and the following Screen will be shown



- 1) **Indication window:** It indicates call states information such as "Talking, Connecting, Idle"
- 2) **IP address window:** Input call receiver's IP address to make a phone call.
- 3) **Call (Send/Receive) button:** Press to make a call or receive a call.
- 4) **Video play Icon:** It shows caller's and receiver's image on screen.
- 5) **Caller image send button:** When clicked, your image appears on the other party's window
- 6) **Window for Video Conference (for Receiver):** An Window for receiver's image
- 7) **Window for Video Conference (for Caller):** An Window for caller's image
- 8) **Clear, open and Save Button:** It saves or clears the session on whiteboard.
- 9) **Font & point setting button:** You can change the font, boldness and color of letter on whiteboard.
- 10) **White board:** You can draw or write with a stylus pen on this board.
- 11) **Voice option Button:** An icon for volume change and other microphone option control.

- 2) Input the call receiver's IP address on 2) IP address window.
- 3) Press the call button 3) to make a call .You are now online with the call receiver with a headset or an external microphone & speaker
- 4) When the conversation is over, click the Stop button to ring off.

## **Receiving the calls**

- 1) When the phone rings, press the call button 3) to answer the call
- 2) After finishing the conversation, press stop button to ring off.

## **How to use one to one Internet Video conference**

### **How to make or receive a call**

- 1) Do the same way as making phone calls with Internet phone.
- 2) When connected, press the video play button to display your image on the caller image window.
- 3) After a second, the receiver's image comes out on the receiver image window and you can enjoy 1 to 1 Internet Video conference.

## **Chatting with Net whiteboard**

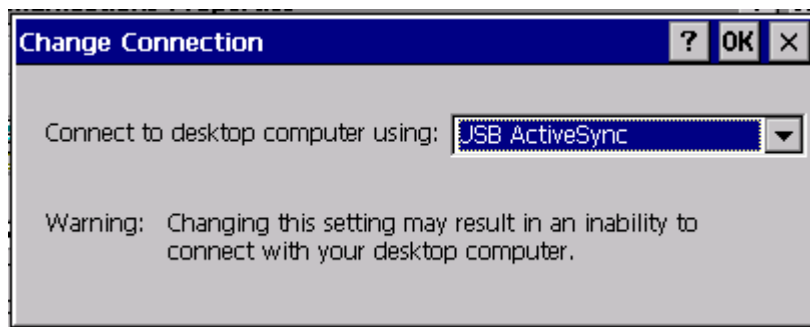
On the session of Internet phone call or Internet Video conference, you can use Whiteboard to draw simple things or take a note, and you can also exchange it with the receiver in real-time.

By using button 9), you can choose the font option, boldness and color of the letter.

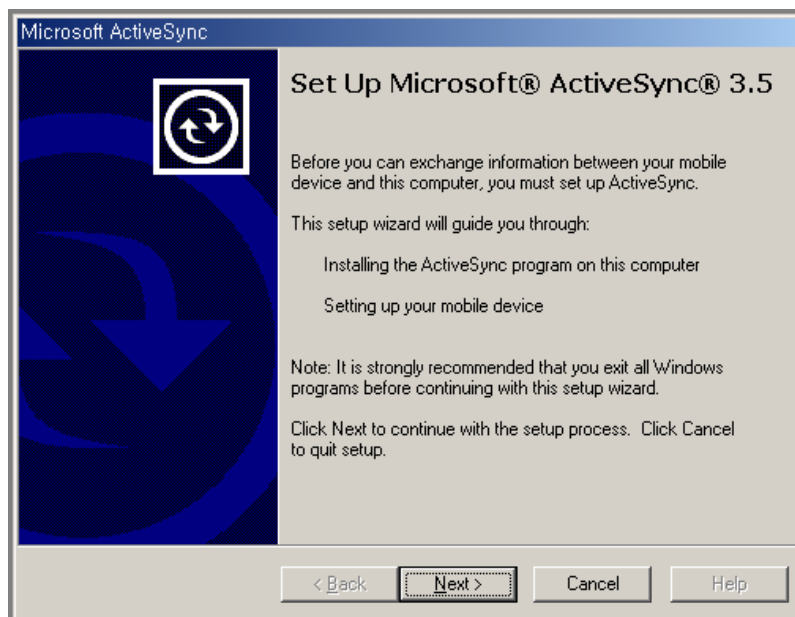
## Installing ActiveSync to PC

### - Installing ActiveSync program

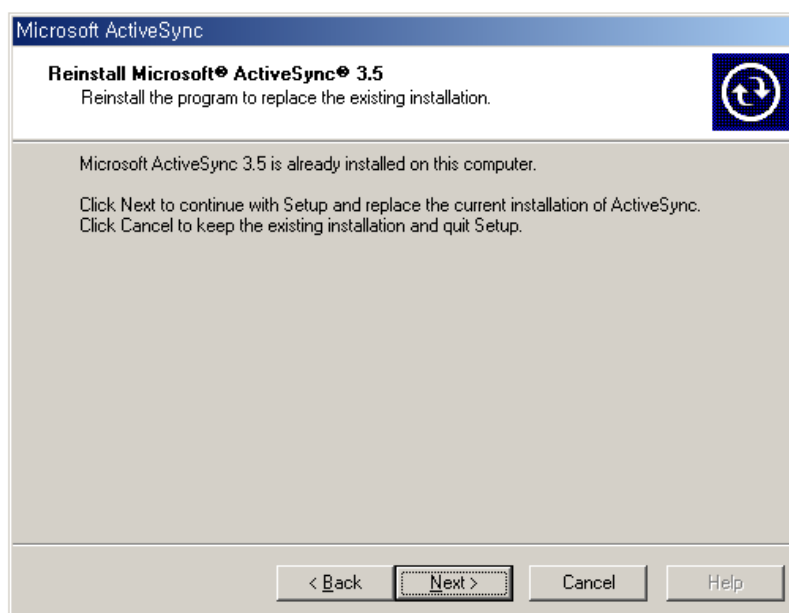
- 1) Select Start, Settings and Control Panel in turn.
- 2) Select Communication icon. In the Communication Registration dialog box key in the name of the device.
- 3) The name must start with a letter. Maximum 15 characters are allowed. Blank space is not allowed.
- 4) When name input is completed, select the PC Connection tab.
- 5) Click Change. Select USB Active sync from the "Connect to desktop computer" drop-down list.



- 6) Download ActiveSync installation program to PC.
  - \* Up-to-date program version can be downloaded from the Microsoft website <http://www.microsoft.com/mobile/pocketpc/downloads>.
- 7) Double click msasync.exe. And Installation wizard appears is activated.
- 8) When installation files are copied and the 'Set Up Microsoft Active sync 3.5' dialog box appears, click Next to continue.



9) Click Next to continue installation.



10) Click Next to continue.

11) When the Wizard steps are completed, the program prompts you about system updating and exit.

## Connecting IP-STATION to PC

### - Connection by USB port

(1) Connects IP-STATION and PC with USB port cable.

(2) When connected, PC detects a new hardware.

\* If your PC does not find new hardware, please check the both ends of the cable.

(3) Choose USB drive target, and click Next to complete the installation.

(4) Execute ActiveSync to implement connection.

(5) Once installed, skip the 2~4 steps, and connect USB cable directly with IP-Station. then it will start automatically.

## PC and IP-STATION Data Synchronization and Removal

### - Synchronization

1) Connect IP-STATION and PC with a USB cable.

2) USB cable automatically connects the above two through USB port. If the connection can not be established automatically, run Windows\replog.exe file to synchronize IP-

STATON and PC.

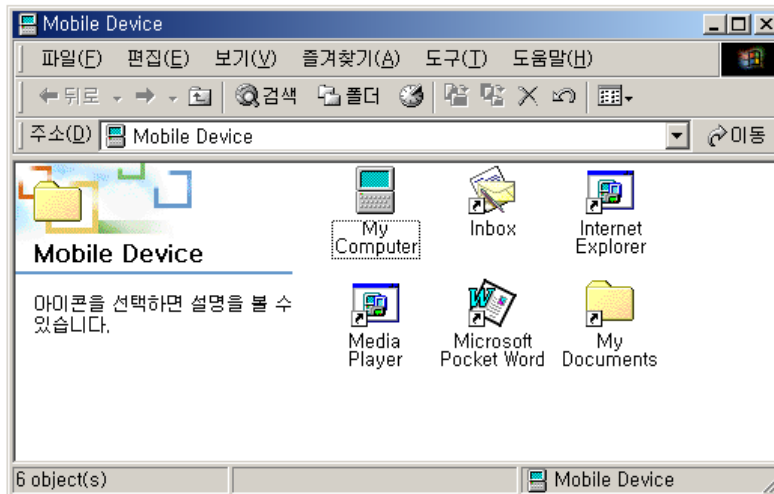
## - Removing synchronization

Simply disconnect USB cable between IP-STATION and PC.

## - Inspecting IP-STATION hardware from the desktop PC

ActiveSync lets you check all IP-STATION hardware from your desktop PC.

5) Mobile Device screen appears when you select Explore in the ActiveSync or file menu.



## **<Specification>** (H/W and S/W requirements)

### **H/W**

- Processor: Strong ARM (206MHz)
- Memory: 32Mbytes ( extendible to 64MBytes ), 32Mbytes Flash ROM
- OS: MS Windows CE v3.0
- Display: 10.4" Color TFT LCD, 800\*600 resolution  
65,536 colors with Touch Screen
- Network: 10Base T Ethernet
- Size: 275\*235\*25mm
- Camera: CMOS camera: VGA (640\*480) image sensor
- Power: Li-on Battery/ DC Adapter

### **S/W**

- Pocket Internet Explorer 4.0
- Pocket Email (InBox)
- Pocket Paint
- Pocket Word
- Image Viewer
- Voice Mixer
- Hand Writing Recognition Program

<Service Information and Precautions>

## Contact

A/S Contact to: Voix Inc. <http://www.voix.co.kr>

Tel: 02-3487-6544

## Precautions

1. When purchasing the product – The device is in the state of complete discharge. Make sure to charge the device for a certain period of time before you use it.
2. Do not shock the device.
3. Keep the device away from magnets and big-size speakers.
4. Use only recommended detergent to clean up the device. – If a wrong detergent is used, the device might not work properly.
5. Use only power adaptor included in the box.

## Troubleshooting

1. If the product is down and does not turn on – Press the Hard reset button to restore operation.
2. When the center of the touch is not focused – Select Stylus settings from the Control Panel, and click the center of the cross. The cross will move from the center – upper left – lower left – lower right – upper right.
3. When the upper right corner is not touched, click the file button from the upper left menu. This will close the current program or screen.
4. If Internet web browser and soft keyboard window remain open at the time, the Internet browser menu is not activated. In this case, close the Soft keyboard window and click Internet web browser menu.