

FCC PART 15 Subpart C
EMI MEASUREMENT AND TEST REPORT

For

NEWCONT ELE CO., LTD.

40F, BLOCK C SCIENCE & TECHNOLOGY BLDG
SHENNANZHONGLU, SHENZHEN, P.R.CHINA

FCC ID: QFE63201

June 7, 2002

This Report Concerns: <input checked="checked" type="checkbox"/> Original Report	Equipment Type: Cordless Phone
Test Engineer: Benjamin Jin	
Report No.: R02042911	
Test Date: May 28, 2002	
Reviewed By: Jeff Lee	
Prepared By: Bay Area Compliance Laboratory Corporation 230 Commercial Street Sunnyvale, CA 94085 Tel (408) 732-9162 Fax (408) 732-9164	

Note: This test report is specially limited to the above client company and the product model only. It may not be duplicated without prior written consent of Bay Area Compliance Laboratory Corporation. This report **must not** be used by the client to claim product endorsement by NVLAP or any agency of the U.S. Government.

TABLE OF CONTENTS

1 - GENERAL INFORMATION.....	4
1.1 PRODUCT DESCRIPTION FOR EQUIPMENT UNDER TEST (EUT).....	4
1.2 OBJECTIVE	4
1.3 RELATED SUBMITTAL(S)/GRANT(S).....	4
1.4 TEST METHODOLOGY	4
1.5 TEST FACILITY	4
1.6 TEST EQUIPMENT LIST	5
1.8 LOCAL SUPPORT EQUIPMENT LIST AND DETAILS.....	5
1.9 EXTERNAL I/O CABLING LIST AND DETAILS.....	5
2 - SYSTEM TEST CONFIGURATION.....	6
2.1 DESCRIPTION OF TEST CONFIGURATION.....	6
2.2 CONFIGURATION OF TEST SYSTEM (BASE).....	7
2.3 TEST SETUP BLOCK DIAGRAM	7
2.4 EQUIPMENT MODIFICATIONS.....	7
3 - CONDUCTED EMISSIONS TEST DATA.....	8
3.1 MEASUREMENT UNCERTAINTY	8
3.2 EUT SETUP	8
3.3 SPECTRUM ANALYZER SETUP	8
3.4 TEST PROCEDURE	9
3.5 SUMMARY OF TEST RESULTS.....	9
3.6 CONDUCTED EMISSIONS TEST DATA.....	9
3.7 PLOT OF CONDUCTED EMISSIONS TEST DATA.....	9
4 - RADIATED EMISSION DATA.....	11
4.1 MEASUREMENT UNCERTAINTY	11
4.2 EUT SETUP	11
4.3 SPECTRUM ANALYZER SETUP	11
4.4 TEST PROCEDURE	12
4.5 CORRECTED AMPLITUDE & MARGIN CALCULATION	12
4.6 SUMMARY OF TEST RESULTS.....	13
4.7 RADIATED EMISSIONS TEST RESULT DATA	14
5 - BAND EDGES TESTING.....	18
5.1 TEST PROCEDURE	18
5.2 TEST EQUIPMENT	18
5.3 TEST RESULTS.....	18
APPENDIX A - FCC PRODUCT LABELING AND WARNING STATEMENT.....	20
FCC ID LABEL	20
PROPOSED LABEL LOCATION ON EUT	20
APPENDIX B - TEST SETUP PHOTOGRAPHS	21
BASE CONDUCTED EMISSION - FRONT VIEW	21
BASE CONDUCTED EMISSION - REAR VIEW	21
BASE RADIATED EMISSION - FRONT VIEW	22
BASE RADIATED EMISSION - REAR VIEW	22
HANDSET RADIATED EMISSION - FRONT VIEW.....	23
7.6 HANDSET RADIATED EMISSION - REAR VIEW	23
APPENDIX C - EUT PHOTOGRAPHS	24
HANDSET CHASSIS - TOP VIEW	24
HANDSET CHASSIS - BOTTOM VIEW	24
HANDSET MAIN BOARD - COMPONENT VIEW	25
HANDSET MAIN BOARD - SOLDER VIEW	25
HANDSET TRANSCEIVER - COMPONENT VIEW	26
HANDSET TRANSCEIVER - SOLDER VIEW	26
BASE CHASSIS - TOP VIEW	27

BASE CHASSIS - BOTTOM VIEW	27
BASE CHASSIS - FRONT VIEW	28
POWER ADAPTER - OVERALL VIEW	28
BASE MAIN BOARD - COMPONENT VIEW	29
BASE TRANSCEIVER - SOLDER VIEW	29
BASE TRANSCEIVER - COMPONENT VIEW	30
BASE TRANSCEIVER - SOLDER VIEW	30
APPENDIX D - BLOCK DIAGRAM /SCHEMATICS	31
APPENDIX E - OPERATIONAL DESCRIPTION.....	32
APPENDIX F - USERS MANUAL.....	33

1 - GENERAL INFORMATION

1.1 Product Description for Equipment Under Test (EUT)

The *NEWCONT ELE CO., LTD.*'s product, model name: *NTP6304* or the "EUT" as referred to in this report is a 2.4GHz cordless telephone. The EUT was composed of two parts, one is a Handset which measures approximately 7.5"L x 2.4"W x 1.5"H, and the other is a Base which measures approximately 6.0"L x 6.0" W x 4.2"H.

The EUT utilized NEWCONT AC/DC power adapter, M/N: PPI-0930.

** The test data was good for test sample only. It may have deviation for other product samples.*

1.2 Objective

This document is a qualification test report based on the Electromagnetic Interference (EMI) tests performed on the EUT. The EMI measurements were performed according to the measurement procedure described in ANSI C63.4: 1992.

The tests were performed in order to determine whether the electromagnetic emissions from the equipment under test, referred to as EUT hereafter, are within the specification limits defined by FCC Title 47, Part 15, Subpart C, section 15.205, 15.207, and 15.249.

1.3 Related Submittal(s)/Grant(s)

No Related Submittals

1.4 Test Methodology

All measurements contained in this report were conducted with ANSI C63.4-1992, American National Standard for Methods of Measurement of Radio-Noise Emissions from Low-Voltage Electrical and Electronic Equipment in the range of 9 kHz to 40 GHz.

All radiated and conducted emissions measurement was performed at Bay Area Compliance Laboratory, Corp. The radiated testing was performed at an antenna-to-EUT distance of 3 meters.

1.5 Test Facility

The Open Area Test site used by Bay Area Compliance Laboratory Corporation to collect radiated and conducted emission measurement data is located in the back parking lot of the building at 230 Commercial Street, Sunnyvale, California, USA.

Test site at Bay Area Compliance Laboratory Corporation has been fully described in reports submitted to the Federal Communication Commission (FCC) and Voluntary Control Council for Interference (VCCI). The details of these reports has been found to be in compliance with the requirements of Section 2.948 of the FCC Rules on February 11 and December 10, 1997 and Article 8 of the VCCI regulations on December 25, 1997. The facility also complies with the radiated and AC line conducted test site criteria set forth in ANSI C63.4-2000.

The Federal Communications Commission and Voluntary Control Council for Interference has the reports on file and is listed under FCC file 31040/SIT 1300F2 and VCCI Registration No.: C-1298 and R-1234. The test site has been approved by the FCC and VCCI for public use and is listed in the FCC Public Access Link (PAL) database.

Additionally, Bay Area Compliance Laboratory Corporation is a National Institute of Standards and Technology (NIST) accredited laboratory, under the National Voluntary Laboratory Accredited Program (NVLAP). The scope of the accreditation covers the FCC Method - 47 CFR Part 15 - Digital Devices, IEC/CISPR 22: 1998, and AS/NZS 3548: Electromagnetic Interference - Limits and Methods of Measurement of Information Technology Equipment test methods under NVLAP Lab Code 200167-0.

1.6 Test Equipment List

Manufacturer	Description	Model	Serial Number	Cal. Due Date
HP	Spectrum Analyzer	8564E	08303	12/6/2002
HP	Spectrum Analyzer	8593B	2919A00242	12/20/2002
HP	Amplifier	8349B	2644A02662	12/20/2002
HP	Quasi-Peak Adapter	85650A	917059	12/6/2002
HP	Amplifier	8447E	1937A01046	12/6/2002
A.H. System	Horn Antenna	SAS0200/571	261	12/27/2002
Com-Power	Log Periodic Antenna	AL-100	16005	11/2/2002
Com-Power	Biconical Antenna	AB-100	14012	11/2/2002
Solar Electronics	LISN	8012-50-R-24-BNC	968447	12/28/2002
Com-Power	LISN	LI-200	12208	12/20/2002
Com-Power	LISN	LI-200	12005	12/20/2002
BACL	Data Entry Software	DES1	0001	12/20/2002

***Statement of Traceability: Bay Area Compliance Laboratory Corp.** Certifies that all calibration has been performed using suitable standards traceable to the NATIONAL INSTITUTE of STANDARDS and TECHNOLOGY.

1.8 Local Support Equipment List and Details

Manufacturer	Description	Model	Serial Number	FCC ID
TELTONE CORP.	Simulator	TLS-3B-01	80071	DOC
PANASONIC	Telephone	KX-T3175	6IBTB142741	ACJMLA-75986-MT-E

1.9 External I/O Cabling List and Details

Cable Description	Length (M)	Port/From	To
Unshielded RJ 11 telephone cable	2.0	RJ 11 Port / Simulator	EUT
Unshielded RJ 11 telephone cable	2.0	RJ 11 Port / Simulator	Telephone

2 - SYSTEM TEST CONFIGURATION

2.1 Description of Test Configuration

The EUT was configured for testing in a typical fashion (as normally used by a typical user).

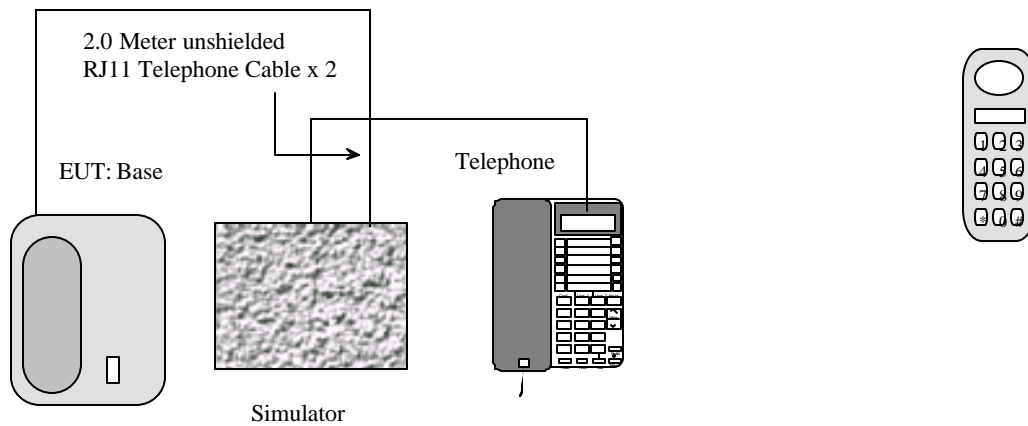
Handset being tested: The Handset unit was placed on the wooden table and tested in three orthogonal axis. The handset was connected to the headset via its headset port. The Low, middle, and high channels were tested. The handset was transmitting to and receiving from the Base unit. The EUT was investigated for emissions while off hook. The radiated data was taken in this mode of operation. All initial and final investigations were performed with the EMI receiver in manual mode scanning the frequency range continuously. The cables were bundled and routed as shown in the 2.5.

Base being tested: The Base unit was placed on the wooden table. The Low, middle, and high channels were tested. The base was connected to the line simulator and an AC adapter via its Tel Line and power ports, respectively. The base was transmitting and receiving from the Handset. The conducted as well as radiated data was taken in this mode of operation. All initial and final investigations were performed with the EMI receiver in manual mode scanning the frequency range continuously. The cables were bundled and routed as shown in the 2.4.

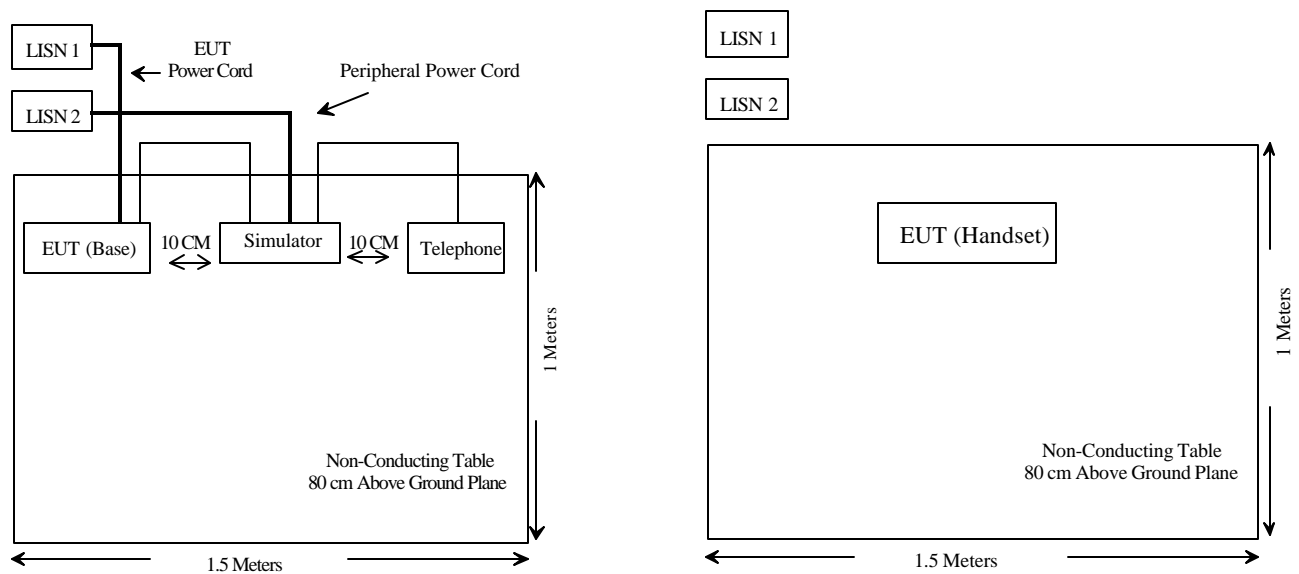
2.2 Configuration of Test System (Base)

Base

Handset



2.3 Test Setup Block Diagram



2.4 Equipment Modifications

No modification(s) to the EUT were made by BACL to comply with the applicable limits.

3 - CONDUCTED EMISSIONS TEST DATA

3.1 Measurement Uncertainty

All measurements involve certain levels of uncertainties, especially in field of EMC. The factors contributing to uncertainties are spectrum analyzer, cable loss, and LISN.

Based on NIS 81, The Treatment of Uncertainty in EMC Measurements, the best estimate of the uncertainty of any conducted emissions measurement at BACL is ± 2.4 dB.

3.2 EUT Setup

The measurement was performed at the **Open Area Test Site**, using the same setup per ANSI C63.4-1992 measurement procedure. Specification used was with the FCC Class B limits.

The Base unit of EUT was connected to 110Vac/60Hz power source and it was placed center and the back edge of the test table. The simulator was placed on one side of the EUT base, and the telephone was placed on the other side the EUT base. The rear of the EUT and peripherals were placed flushed with the rear of the tabletop.

The spacing between the peripherals was 10 centimeters.

External I/O cables were draped over edge of the test table and bundle when necessary.

3.3 Spectrum Analyzer Setup

The spectrum analyzer was set with the following configurations during the conducted emission test:

Start Frequency	450 kHz
Stop Frequency	30 MHz
Sweep Speed.....	Auto
IF Bandwidth.....	10 kHz
Video Bandwidth	10 kHz
Quasi-Peak Adapter Bandwidth.....	9 kHz
Quasi-Peak Adapter Mode	Normal

3.4 Test Procedure

During the conducted emission test, the EUT power cord was connected to the auxiliary outlet of the first LISN with all support equipment power cords connected to the second.

Maximizing procedure was performed on the six (6) highest emissions to ensure EUT compliance using all installation combination. All data was recorded in the peak detection mode. Quasi-peak readings were only performed when an emission was found to be marginal (within -4 dB of specification limit). Quasi-peak readings are distinguished with a "Qp".

3.5 Summary of Test Results

According to the data in section 3.6, the EUT complied with the FCC Conducted margin for a Class B device and these test results is deemed satisfactory evidence of compliance with RSS-210 of the Canadian Interference-Causing Equipment Regulations, with the *worst* margin reading of:

-3.2 dBμV at 0.465 MHz in the Neutral mode, 0.45 – 30 MHz

3.6 Conducted Emissions Test Data

LINE CONDUCTED EMISSIONS				FCC CLASS B	
Frequency MHz	Amplitude dBμV	Detector Qp/Ave/Peak	Phase Line/Neutral	Limit dBμV	Margin dB
0.465	44.8	QP	Neutral	48	-3.2
0.710	43.7	QP	Neutral	48	-4.3
0.760	41.5	QP	Line	48	-6.5
0.550	39.8	QP	Line	48	-8.2
1.240	30.2	QP	Line	48	-17.8
1.390	29.6	QP	Neutral	48	-18.4

3.7 Plot of Conducted Emissions Test Data

Plot of Conducted Emissions test data was presented hereinafter as reference.

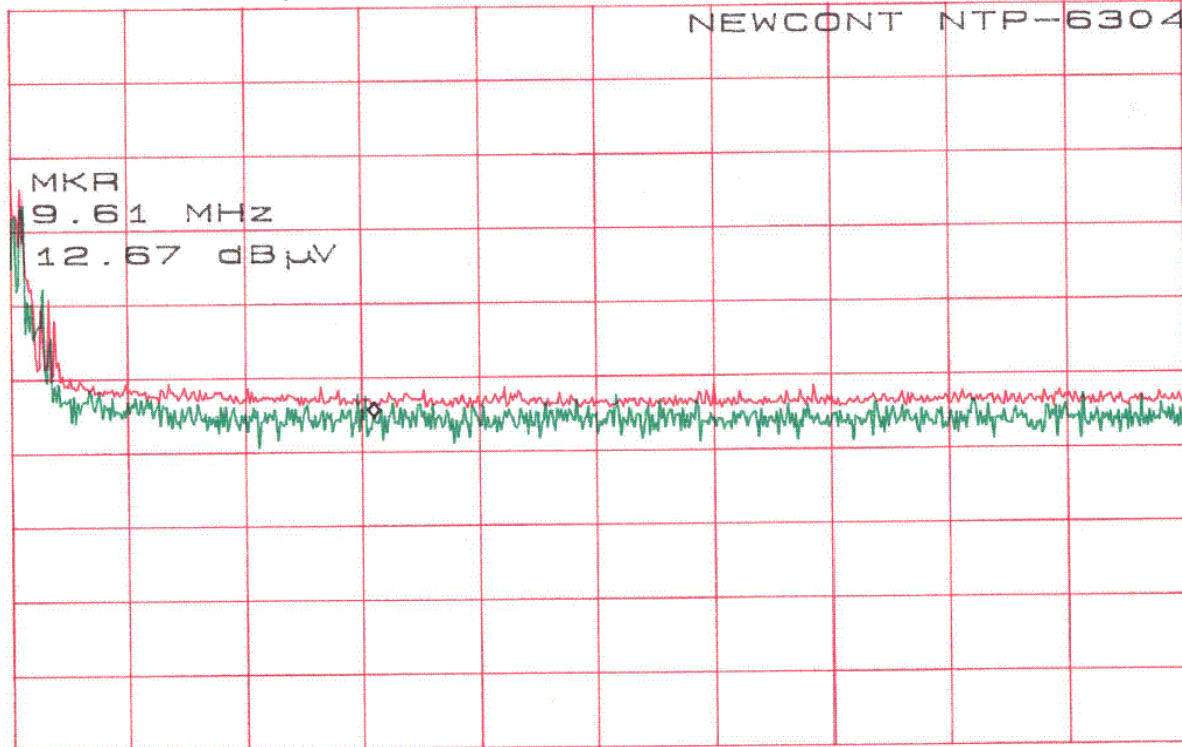
ATTEN 10dB

MKR 12.67dB μ VRL 68.0dB μ V

10dB/

9.61MHz

NEWCONT NTP-6304



START 450kHz

STOP 30.00MHz

*RBW 10kHz

VBW 10kHz

*SWP 200sec

4 - RADIATED EMISSION DATA

4.1 Measurement Uncertainty

All measurements involve certain levels of uncertainties, especially in field of EMC. The factors contributing to uncertainties are spectrum analyzer, cable loss, antenna factor calibration, antenna directivity, antenna factor variation with height, antenna phase center variation, antenna factor frequency interpolation, measurement distance variation, site imperfections, mismatch (average), and system repeatability.

Based on NIS 81, The Treatment of Uncertainty in EMC Measurements, the best estimate of the uncertainty of a radiation emissions measurement at BACL is ± 4.0 dB.

4.2 EUT Setup

The radiated emission tests were performed in the open area 3-meter test site, using the setup in accordance with the ANSI C63.4-1992. The specification used was the FCC 15 Subpart C limits.

The Base of EUT was connected to a 110Vac/60Hz power source and it was placed center and the back edge of the test table. The simulator was placed on one side of the EUT base, and the telephone was placed on the other side the EUT base. The rear of the EUT and peripherals were placed flushed with the rear of the tabletop.

The spacing between the peripherals was 10 centimeters.

External I/O cables were draped over edge of the test table and bundle when necessary.

4.3 Spectrum Analyzer Setup

According to FCC Rules, 47 CFR 15.33 (a) (1), the system was tested to 26GHz.

During the radiated emission test, the spectrum analyzer was set with the following configurations:

<i>Frequency Range</i>	<i>RBW</i>	<i>Video B/W</i>
Below 30MHz	10kHz	10kHz
30 – 1000MHz	100kHz	100kHz
Above 1000MHz	1MHz	1MHz

4.4 Test Procedure

For the radiated emissions test, both the EUT and all support equipment power cords were connected to the AC floor outlet since the power supply used in the EUT did not provide an accessory power outlet.

Maximizing procedure was performed on the six (6) highest emissions to ensure EUT compliance is with all installation combinations. All data was recorded in the peak detection mode. Quasi-peak readings was performed only when an emission was found to be marginal (within -4 dB of specification limit), and are distinguished with a "Qp" in the data table.

4.5 Corrected Amplitude & Margin Calculation

The Corrected Amplitude is calculated by adding the Antenna Factor and Cable Factor, and subtracting the Amplifier Gain from the Amplitude reading. The basic equation is as follows:

$$\text{Corr. Ampl.} = \text{Indicated Reading} + \text{Antenna Factor} + \text{Cable Factor} - \text{Amplifier Gain}$$

The "**Margin**" column of the following data tables indicates the degree of compliance with the applicable limit. For example, a margin of -7dBμV means the emission is 7dBμV below the maximum limit for applicable limits. The equation for margin calculation is as follows:

$$\text{Margin} = \text{Corr. Ampl.} - \text{Applicable Limit}$$

4.6 Summary of Test Results

According to the data in section 4.7, the EUT complied with the FCC Title 47, Part 15, Subpart C, section 15.205, 15.207, and 15.249 after tested to 10th harmonics as required by FCC and had the worst margin of:

Base, 30MHz - 26GHz, 3 Meters

-0.7 dB μ V at 2403.05 MHz in the Horizontal polarization at Low Frequency

-0.8 dB μ V at 2404.00 MHz in the Vertical polarization at Middle Frequency

-1.6 dB μ V at 2405.00 MHz in the Vertical polarization at High Frequency

Handset, 30MHz - 26GHz, 3 Meters

-2.3 dB μ V at 2474.00 MHz in the Vertical polarization at Low Frequency

-2.2 dB μ V at 2474.95 MHz in the Vertical polarization at Middle Frequency

-1.3 dB μ V at 2475.95 MHz in the Vertical polarization at High Frequency

4.7 Radiated Emissions Test Result Data**Base Unit, Intentional Emission, 30 MHz to 26GHz, 3 meters**

INDICATED			TABLE	ANTENNA		CORRECTION FACTOR			CORRECTED AMPLITUDE	FCC 15 SUBPART C	
Frequency MHz	Ampl. dBμV/m	Comments	Angle Degree	Height Meter	Polar H/ V	Antenna dBμV/m	Cable DB	Amp. dB	Corr. Ampl. dBμV/m	Limit dBμV/m	Margin dB
Low Frequency											
2403.05	91.8	Ave.	30	1.0	h	28.1	3.4	30.0	93.3	94.0	-0.7
2403.05	87.1	Ave.	45	1.8	v	28.1	3.4	30.0	88.6	94.0	-5.4
2484.70	41.3	Ave.	270	1.5	v	28.1	3.4	30.0	42.8	54.0	-11.3
2403.05	97.6	Peak	30	1.0	h	28.1	3.4	30.0	99.1	114.0	-14.9
2484.70	36.2	Ave.	310	1.2	h	28.1	3.4	30.0	37.7	54.0	-16.4
4806.10	29.7	Ave.	160	1.2	v	32.5	4.9	30.0	37.1	54.0	-16.9
2403.05	93.7	Peak	45	1.8	v	28.1	3.4	30.0	95.2	114.0	-18.8
4806.10	26.6	Ave.	130	1.0	h	32.5	4.9	30.0	34.0	54.0	-20.0
2484.70	49.7	Peak	270	1.5	v	28.1	3.4	30.0	51.2	74.0	-22.9
225.72	29.8	Peak	90	1.5	v	12.1	3.9	25.0	20.8	46.0	-25.2
4806.10	39.1	Peak	160	1.2	v	32.5	4.9	30.0	46.5	74.0	-27.5
2484.70	44.3	Peak	310	1.2	h	28.1	3.4	30.0	45.8	74.0	-28.3
4806.10	35.4	Peak	130	1.0	h	32.5	4.9	30.0	42.8	74.0	-31.2
Middle Frequency											
2404.00	91.7	Ave.	30	1.5	v	28.1	3.4	30.0	93.2	94.0	-0.8
2404.00	88.7	Ave.	0	1.8	h	28.1	3.4	30.0	90.2	94.0	-3.8
2404.00	97.4	Peak	30	1.5	v	28.1	3.4	30.0	98.9	114.0	-15.2
2485.65	36.9	Ave.	90	1.5	v	28.1	3.4	30.0	38.4	54.0	-15.7
2485.65	35.5	Ave.	110	1.5	h	28.1	3.4	30.0	37.0	54.0	-17.1
2404.00	94.6	Peak	0	1.8	h	28.1	3.4	30.0	96.1	114.0	-18.0
4808.00	28.3	Ave.	220	1.5	v	32.5	4.9	30.0	35.7	54.0	-18.3
4808.00	27.4	Ave.	160	1.2	h	32.5	4.9	30.0	34.8	54.0	-19.2
2485.65	48.1	Peak	90	1.5	v	28.1	3.4	30.0	49.6	74.0	-24.5
326.90	27.9	Peak	60	1.8	h	15.5	2.8	25.0	21.2	46.0	-24.8
2485.65	44.6	Peak	110	1.5	h	28.1	3.4	30.0	46.1	74.0	-28.0
4808.00	37.8	Peak	220	1.5	v	32.5	4.9	30.0	45.2	74.0	-28.8
4808.00	36.2	Peak	160	1.2	h	32.5	4.9	30.0	43.6	74.0	-30.4

High Frequency											
2405.00	90.9	Ave.	110	1.2	v	28.1	3.4	30.0	92.4	94.0	-1.6
2405.00	85.3	Ave.	290	1.0	h	28.1	3.4	30.0	86.8	94.0	-7.2
2486.65	40.1	Ave.	330	1.5	v	28.1	3.4	30.0	41.6	54.0	-12.5
2486.65	37.2	Ave.	290	1.2	h	28.1	3.4	30.0	38.7	54.0	-15.4
2405.00	96.8	Peak	110	1.2	v	28.1	3.4	30.0	98.3	114.0	-15.7
4810.00	28.8	Ave.	30	1.0	h	32.5	4.9	30.0	36.2	54.0	-17.8
4810.00	27.5	Ave.	0	1.2	v	32.5	4.9	30.0	34.9	54.0	-19.1
2405.00	91.6	Peak	290	1.0	h	28.1	3.4	30.0	93.1	114.0	-20.9
114.45	33.6	Peak	160	1.5	h	11.7	1.3	25.0	21.6	43.5	-21.9
2486.65	49.3	Peak	330	1.5	v	28.1	3.4	30.0	50.8	74.0	-23.3
2486.65	46.8	Peak	290	1.2	h	28.1	3.4	30.0	48.3	74.0	-25.8
4810.00	37.9	Peak	30	1.0	h	32.5	4.9	30.0	45.3	74.0	-28.7
4810.00	36.5	Peak	0	1.2	v	32.5	4.9	30.0	43.9	74.0	-30.1

Handset Unit, Intentional Emission, 30 MHz to 26GHz, 3 meters

INDICATED			TABLE	ANTENNA		CORRECTION FACTOR			CORRECTED AMPLITUDE	FCC 15 SUBPART C	
Frequency MHz	Ampl. dBμV/m	Comments	Angle Degree	Height Meter	Polar H/ V	Antenna dBμV/m	Cable DB	Amp. dB	Corr. Ampl. dBμV/m	Limit dBμV/m	Margin dB
Low Frequency											
2474.00	90.2	Ave.	30	1.5	v	28.1	3.4	30.0	91.7	94.0	-2.3
2474.00	86.1	Ave.	10	1.2	h	28.1	3.4	30.0	87.6	94.0	-6.5
2392.35	41.4	Ave.	230	1.5	v	28.1	3.4	30.0	42.9	54.0	-11.2
2392.35	37.7	Ave.	210	1.5	h	28.1	3.4	30.0	39.2	54.0	-14.9
4948.00	30.6	Ave.	90	1.2	v	32.5	4.9	30.0	38.0	54.0	-16.0
2474.00	95.8	Peak	30	1.5	v	28.1	3.4	30.0	97.3	114.0	-16.7
4948.00	28.3	Ave.	110	1.2	h	32.5	4.9	30.0	35.7	54.0	-18.3
2474.00	92.6	Peak	10	1.2	h	28.1	3.4	30.0	94.1	114.0	-19.9
214.36	29.4	Peak	320	1.2	v	12.5	4.7	25.0	21.6	43.5	-21.9
2392.35	49.6	Peak	230	1.5	v	28.1	3.4	30.0	51.1	74.0	-23.0
4948.00	38.9	Peak	90	1.2	v	32.5	4.9	30.0	46.3	74.0	-27.7
2392.35	43.7	Peak	210	1.5	h	28.1	3.4	30.0	45.2	74.0	-28.9
4948.00	34.5	Peak	110	1.2	h	32.5	4.9	30.0	41.9	74.0	-32.1
Middle Frequency											
2474.95	90.3	Ave.	0	1.2	v	28.1	3.4	30.0	91.8	94.0	-2.2
2474.95	89.4	Ave.	340	1.5	h	28.1	3.4	30.0	90.9	94.0	-3.1
2393.30	40.2	Ave.	180	1.5	v	28.1	3.4	30.0	41.7	54.0	-12.4
2393.30	36.9	Ave.	160	1.8	h	28.1	3.4	30.0	38.4	54.0	-15.7
2474.95	96.1	Peak	0	1.2	v	28.1	3.4	30.0	97.6	114.0	-16.4
4949.90	30.1	Ave.	270	1.5	v	32.5	4.9	30.0	37.5	54.0	-16.5
4949.90	29.4	Ave.	300	1.2	h	32.5	4.9	30.0	36.8	54.0	-17.2
2474.95	94.8	Peak	340	1.5	h	28.1	3.4	30.0	96.3	114.0	-17.3
187.40	28.3	Peak	60	1.5	h	13.8	3.9	25.0	21.0	43.5	-22.5
2393.30	48.6	Peak	180	1.5	v	28.1	3.4	30.0	50.1	74.0	-24.0
2393.30	45.7	Peak	160	1.8	h	28.1	3.4	30.0	47.2	74.0	-26.9
4949.90	38.5	Peak	270	1.5	v	32.5	4.9	30.0	45.9	74.0	-28.1
4949.90	35.9	Peak	300	1.2	h	32.5	4.9	30.0	43.3	74.0	-30.7

High Frequency											
2475.95	91.2	Ave.	60	1.0	v	28.1	3.4	30.0	92.7	94.0	-1.3
2475.95	88.6	Ave.	90	2.0	h	28.1	3.4	30.0	90.1	94.0	-4.0
2394.30	40.5	Ave.	270	1.2	v	28.1	3.4	30.0	42.0	54.0	-12.1
2394.30	37.6	Ave.	240	1.2	h	28.1	3.4	30.0	39.1	54.0	-15.0
2475.95	96.8	Peak	60	1.0	v	28.1	3.4	30.0	98.3	114.0	-15.7
4951.90	29.5	Ave.	0	1.2	v	32.5	4.9	30.0	36.9	54.0	-17.1
2475.95	94.2	Peak	90	2.0	h	28.1	3.4	30.0	95.7	114.0	-18.3
4951.90	27.6	Ave.	30	1.5	h	32.5	4.9	30.0	35.0	54.0	-19.0
2394.30	49.2	Peak	270	1.2	v	28.1	3.4	30.0	50.7	74.0	-23.4
255.62	30.1	Peak	180	1.5	v	13.1	3.0	25.0	21.2	46.0	-24.8
2394.30	46.3	Peak	240	1.2	h	28.1	3.4	30.0	47.8	74.0	-26.3
4951.90	38.9	Peak	0	1.2	v	32.5	4.9	30.0	46.3	74.0	-27.7
4951.90	35.7	Peak	30	1.5	h	32.5	4.9	30.0	43.1	74.0	-30.9

5 - BAND EDGES TESTING

Requirements: FCC 15.249 (c), the emission power at the START and STOP frequencies shall be at least 50 dB below the level of the fundamental or to the general radiated emission limits in FCC 15.209, whichever is the lesser attenuation.

5.1 Test Procedure

With the EUT's antenna attached, the EUT's radiated emission power was received by the test antenna which was connected to the spectrum analyzer with the START and STOP frequencies set to the EUT's operation band.

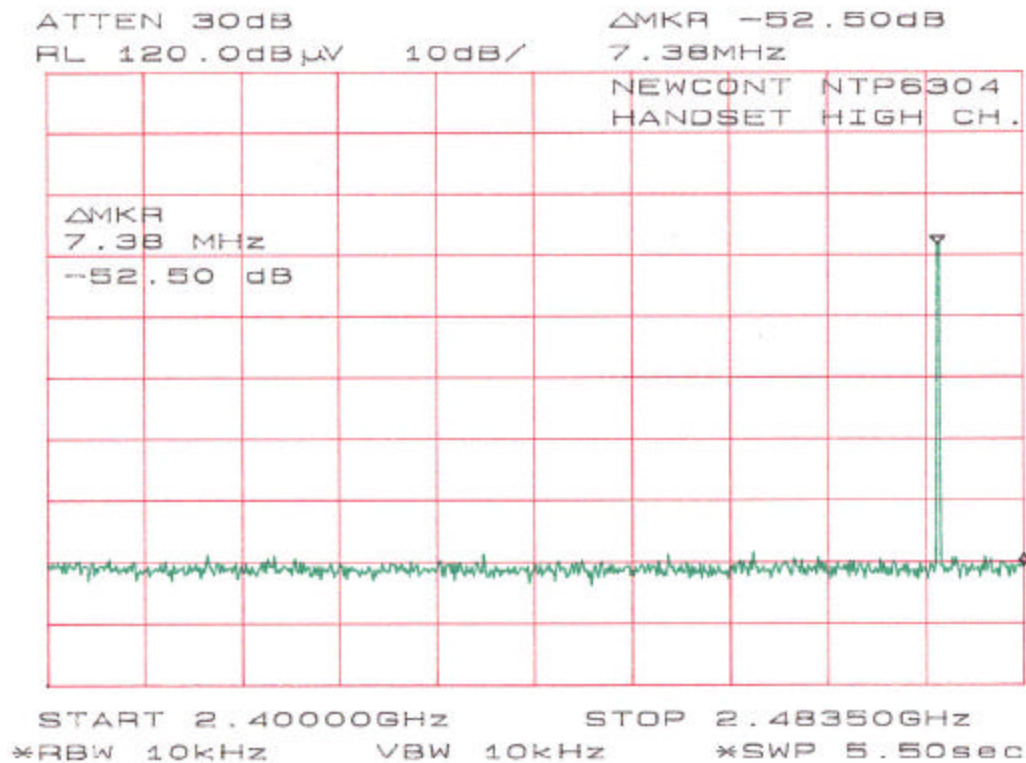
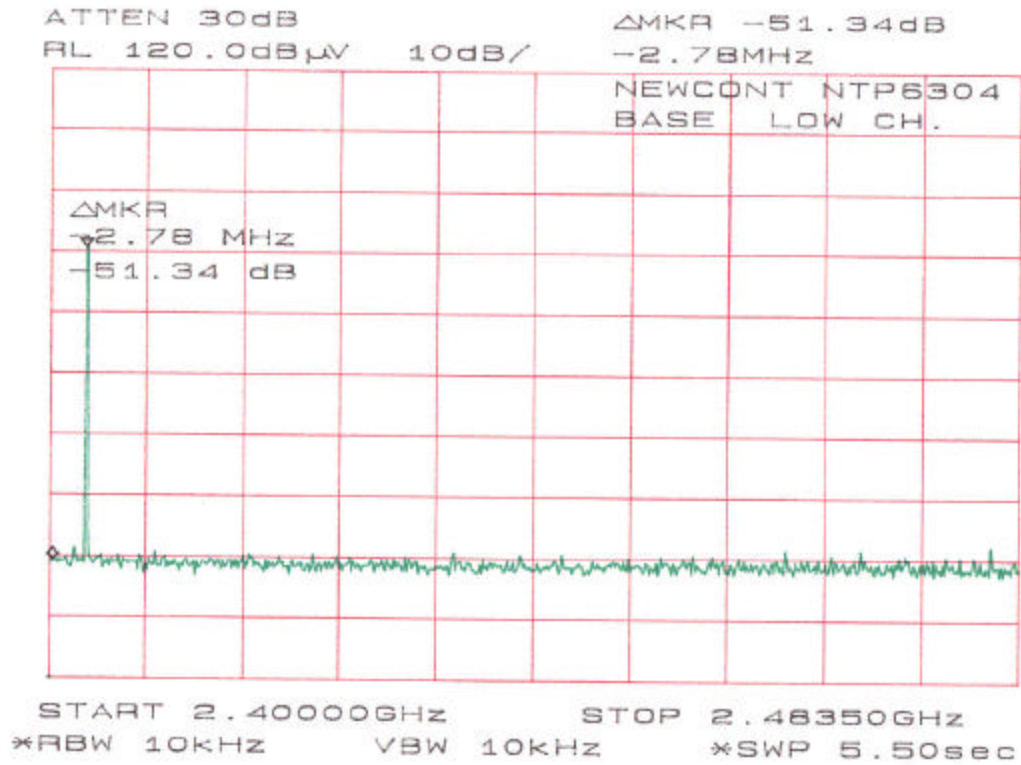
5.2 Test Equipment

HP 8566B Spectrum Analyzer
HP 7470A Plotter

5.3 Test Results

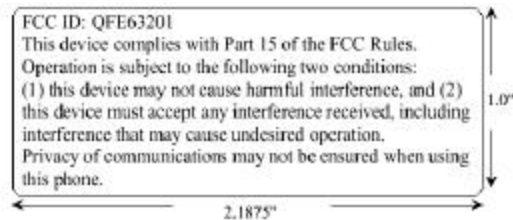
Refer to the attached plots.

Base - Low Frequency
Handset - High Frequency



APPENDIX A - FCC PRODUCT LABELING AND WARNING STATEMENT

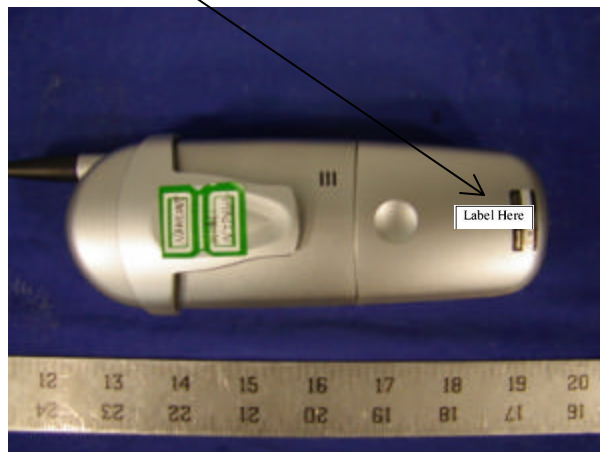
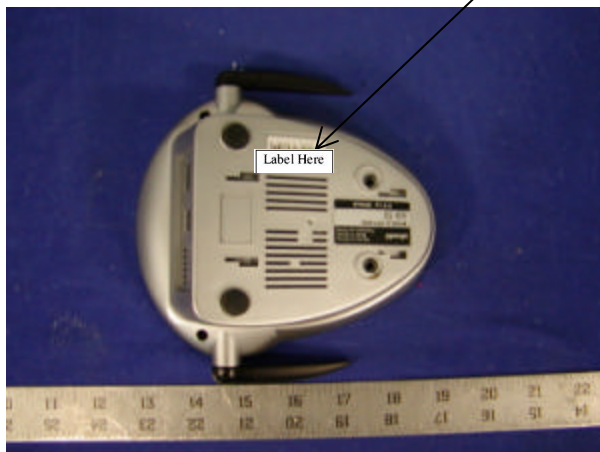
FCC ID Label



Specifications: Text is black or white in color and is left justified. Labels are silk-screened and shall be "permanently affixed" at a conspicuous location on the EUT.

Proposed Label Location on EUT

Bottom Side of Base/Proposed FCC ID Label Location / Handset



APPENDIX B - TEST SETUP PHOTOGRAPHS

Base Conducted Emission - Front View



Base Conducted Emission - Rear View



Base Radiated Emission - Front View



Base Radiated Emission - Rear View



Handset Radiated Emission - Front View



7.6 Handset Radiated Emission - Rear View

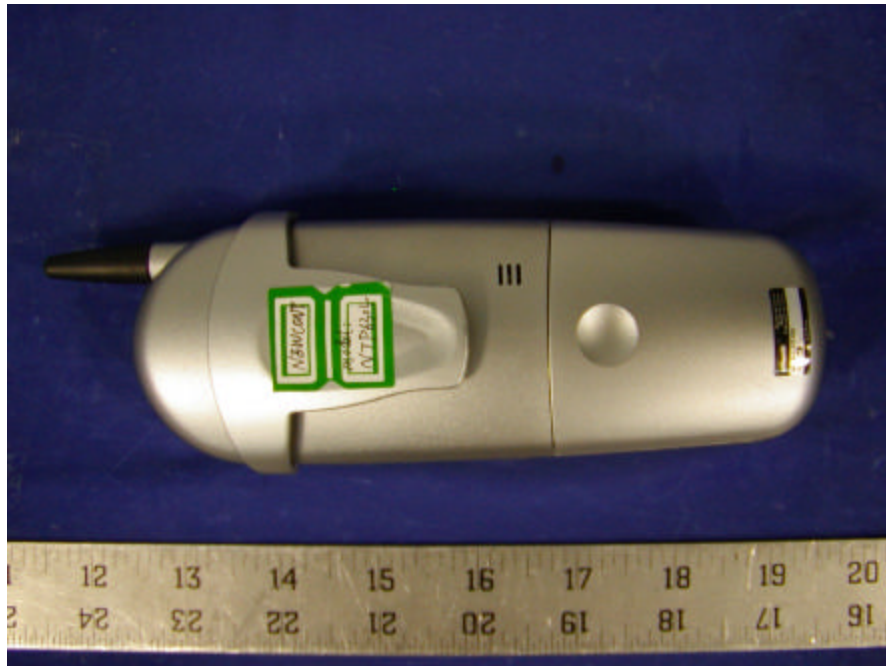


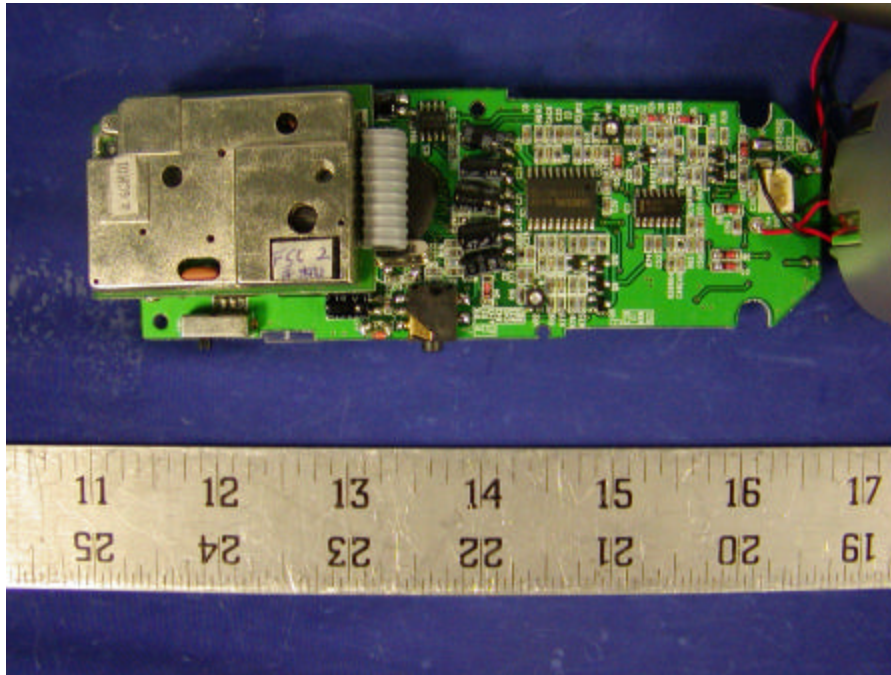
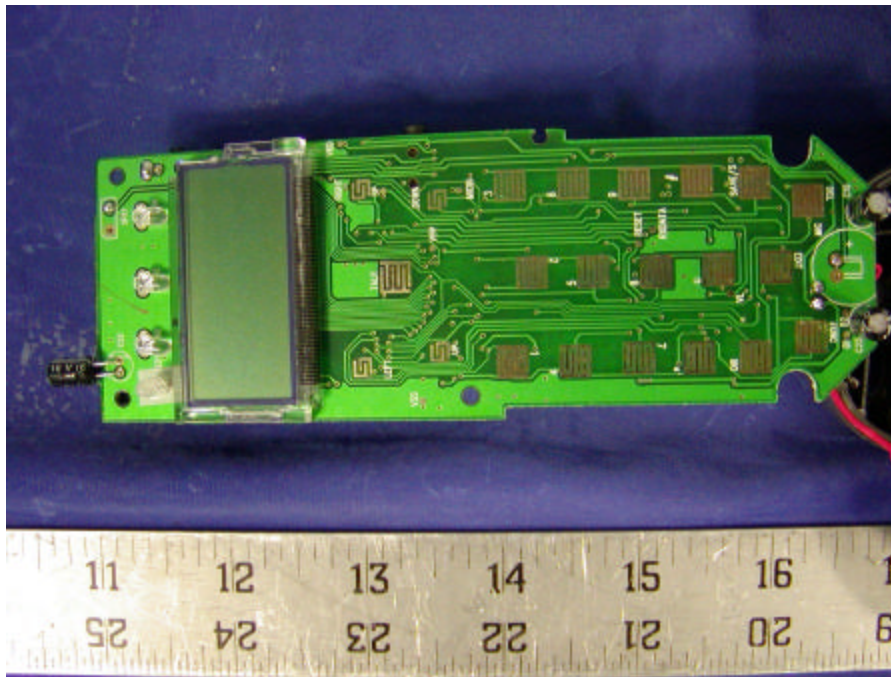
APPENDIX C - EUT PHOTOGRAPHS

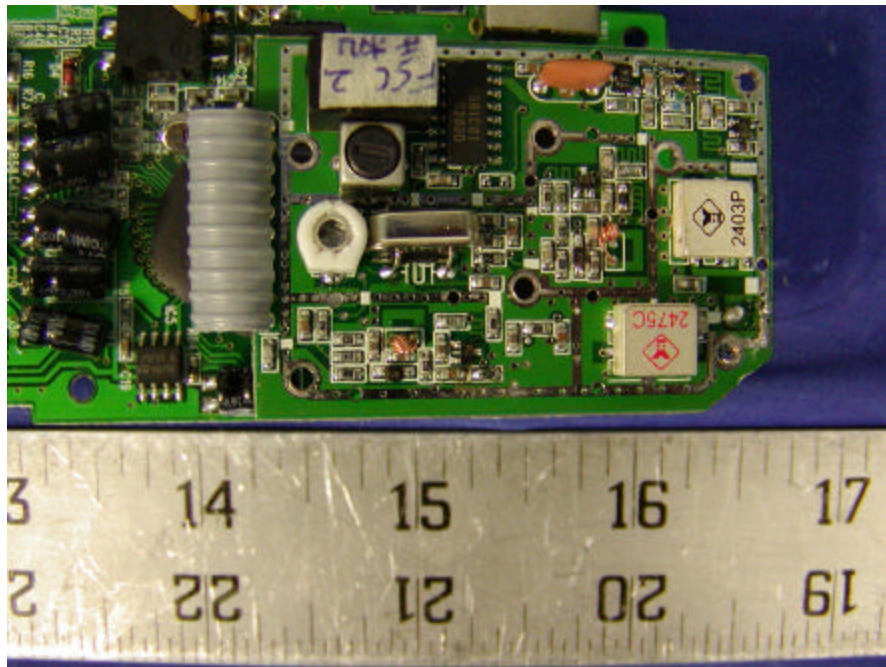
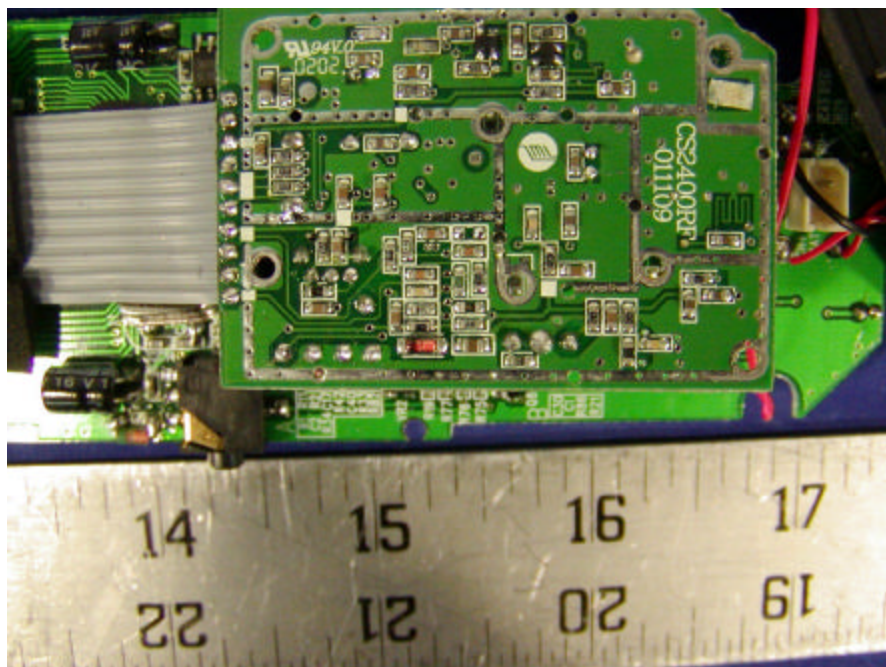
Handset Chassis - Top View

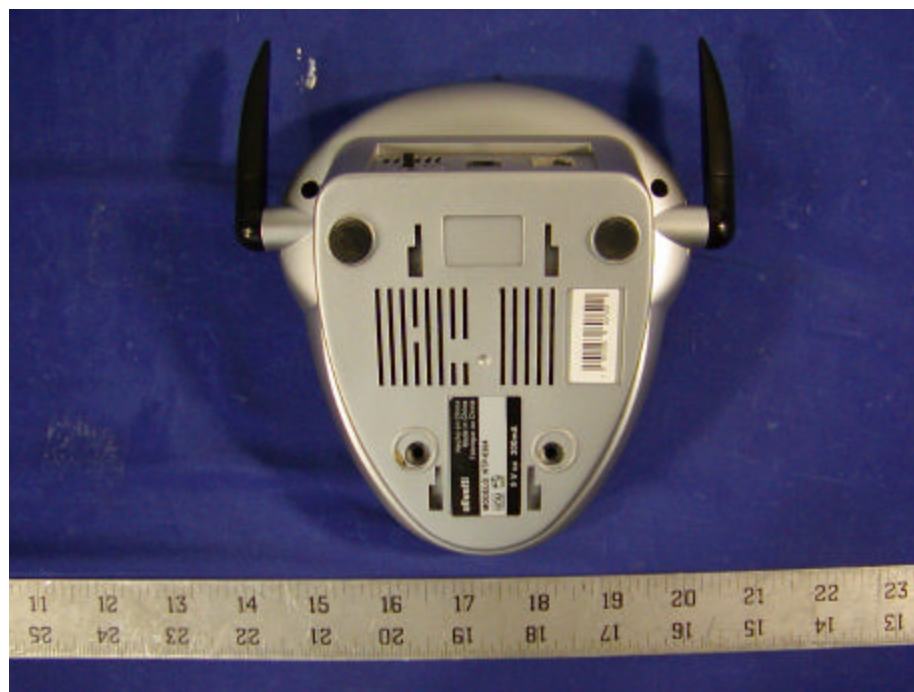


Handset Chassis - Bottom View

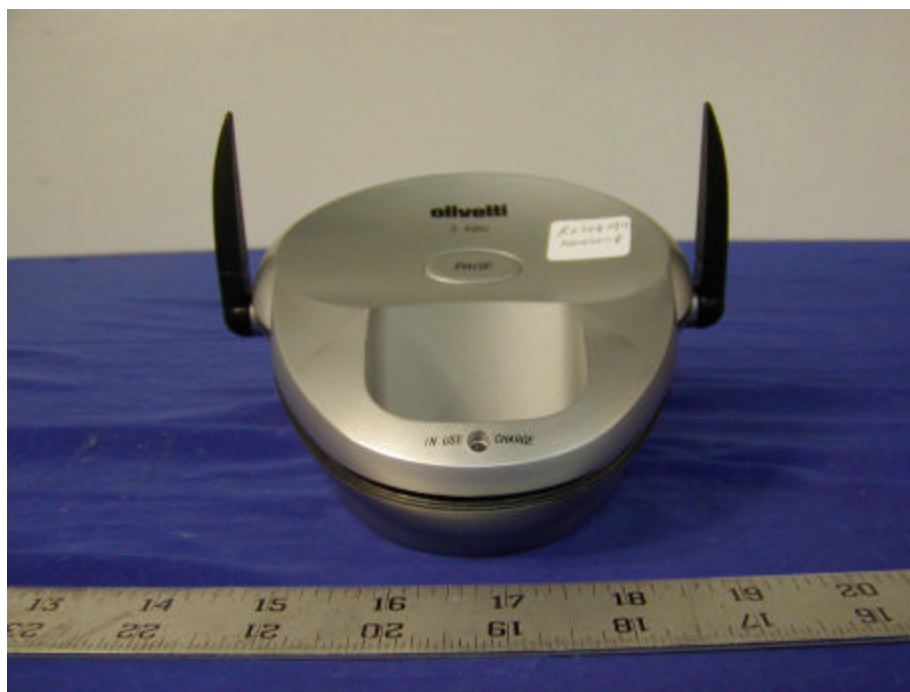


Handset Main Board - Component View**Handset Main Board - Solder View**

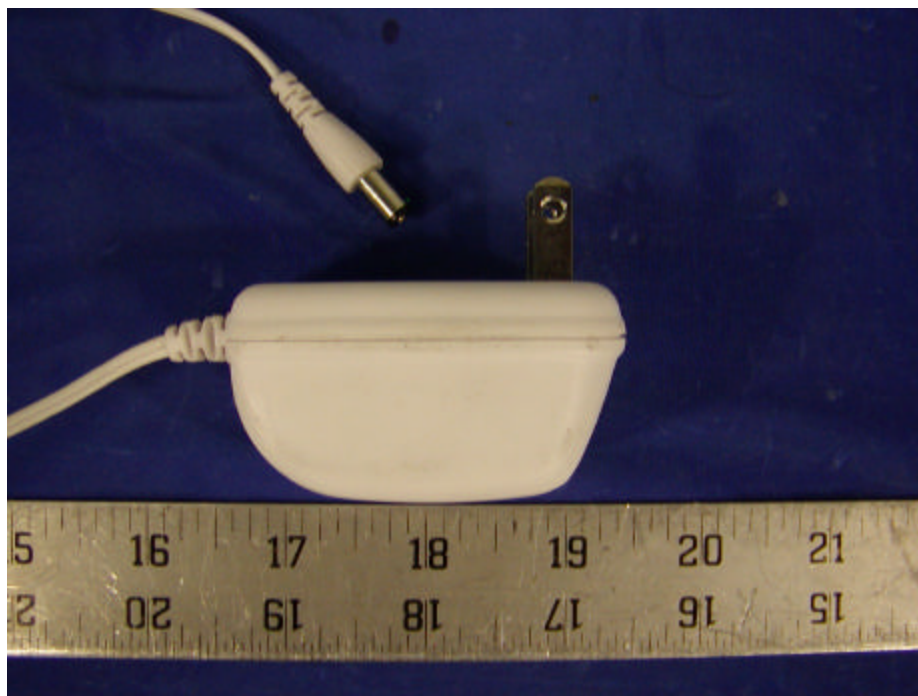
Handset Transceiver - Component View**Handset Transceiver - Solder View**

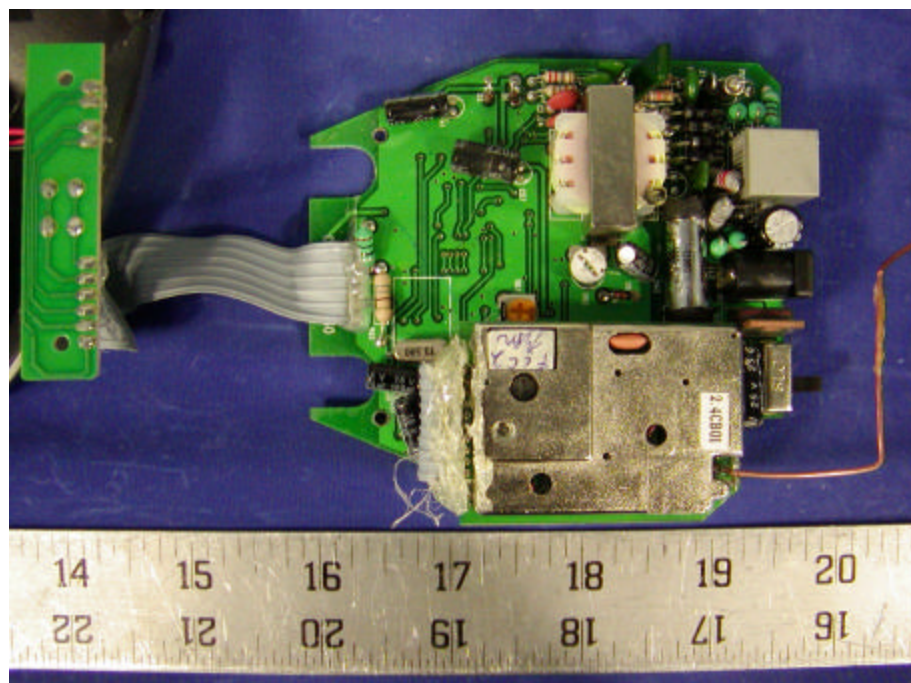
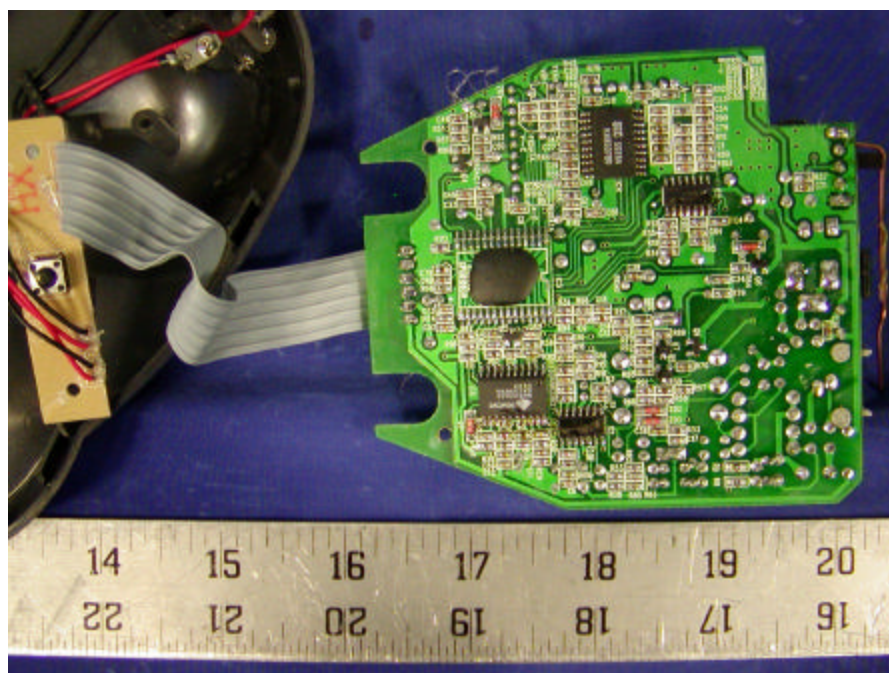
Base Chassis - Top View**Base Chassis - Bottom View**

Base Chassis - Front View



Power Adapter - Overall View



Base Main Board - Component View**Base Transceiver - Solder View**

APPENDIX D - BLOCK DIAGRAM /SCHEMATICS

APPENDIX E - OPERATIONAL DESCRIPTION

APPENDIX F - USERS MANUAL
