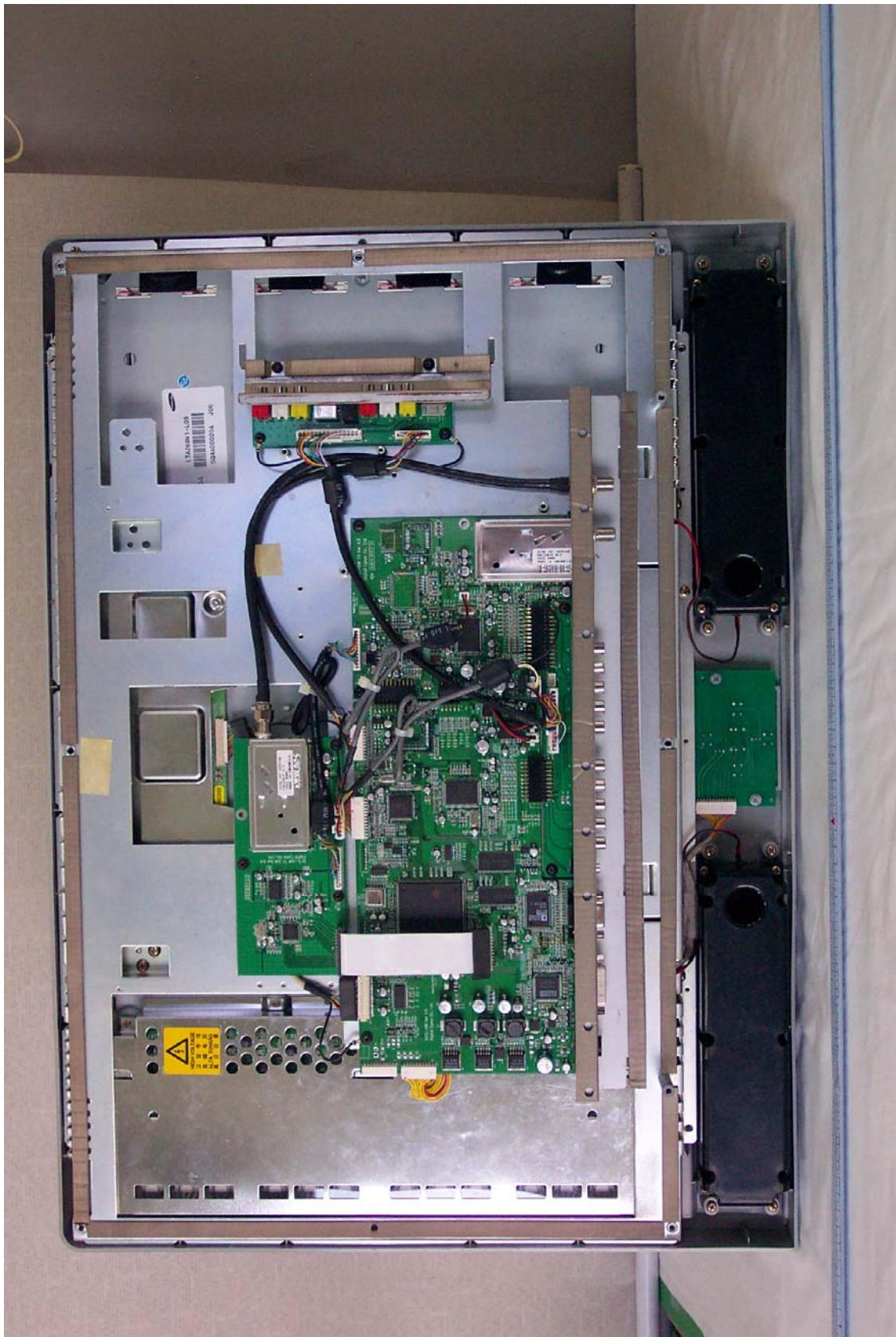


● Inside View of EUT



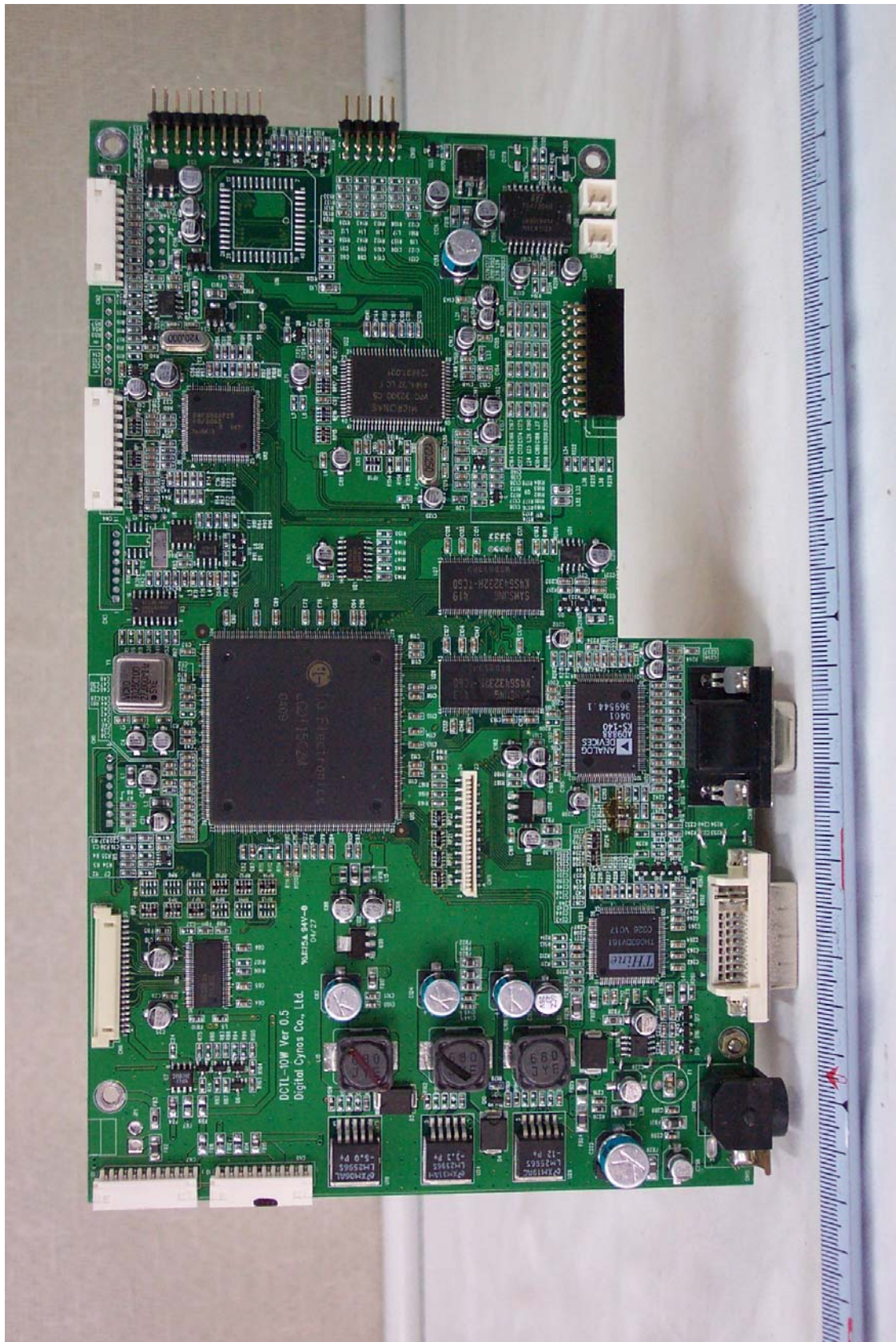
● Front View of LCD Panel



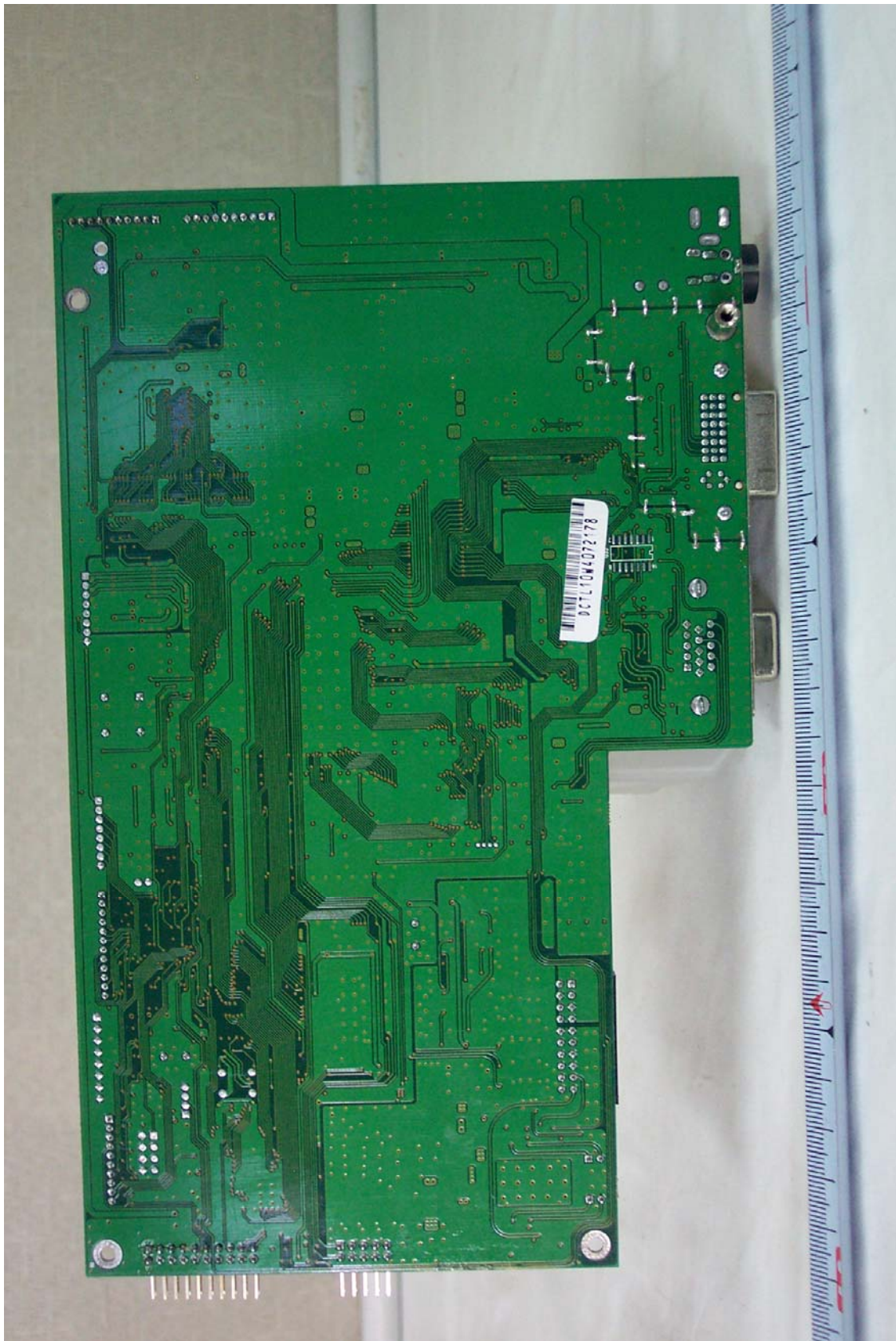
● Rear View of LCD Panel



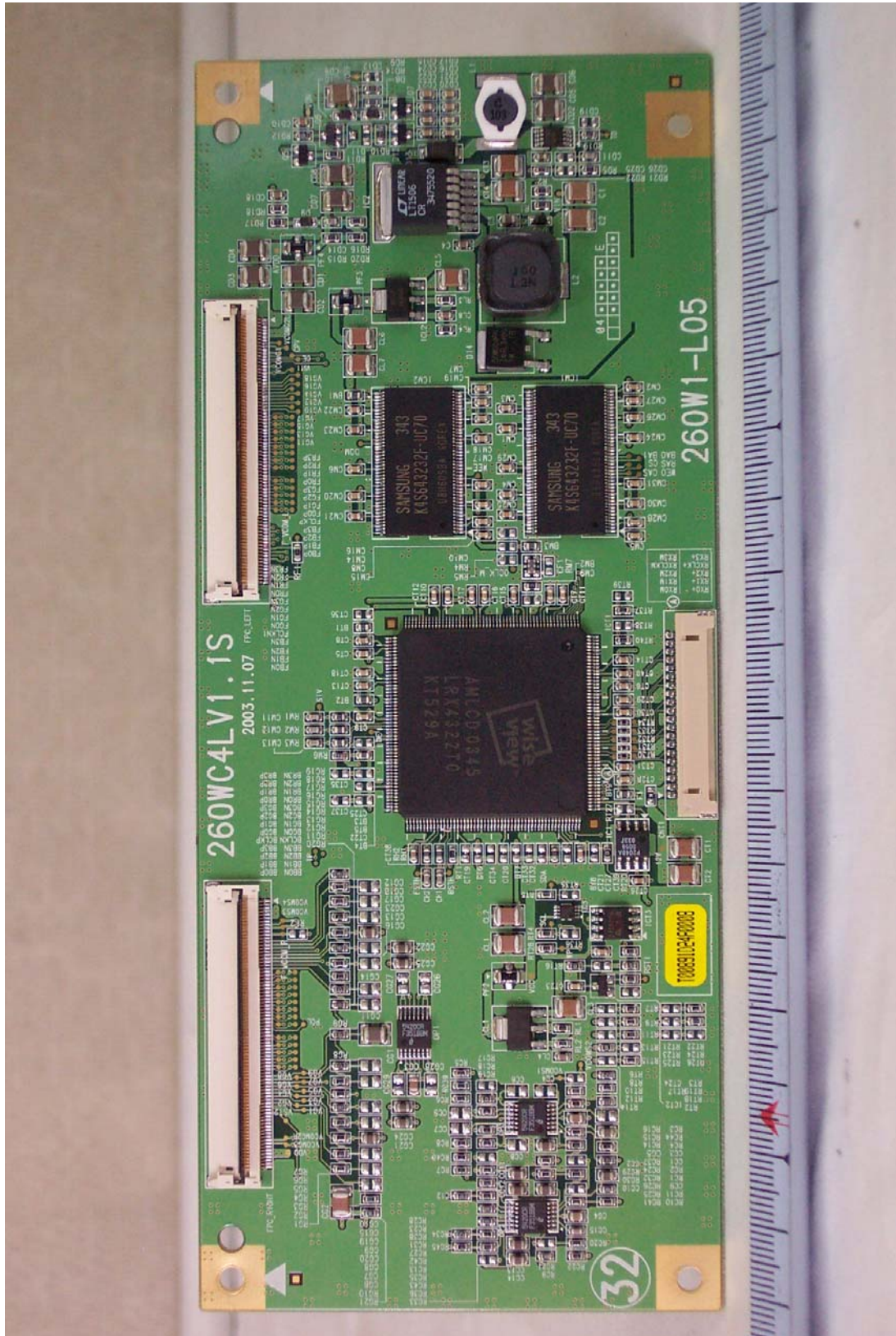
● Front View of Main Board



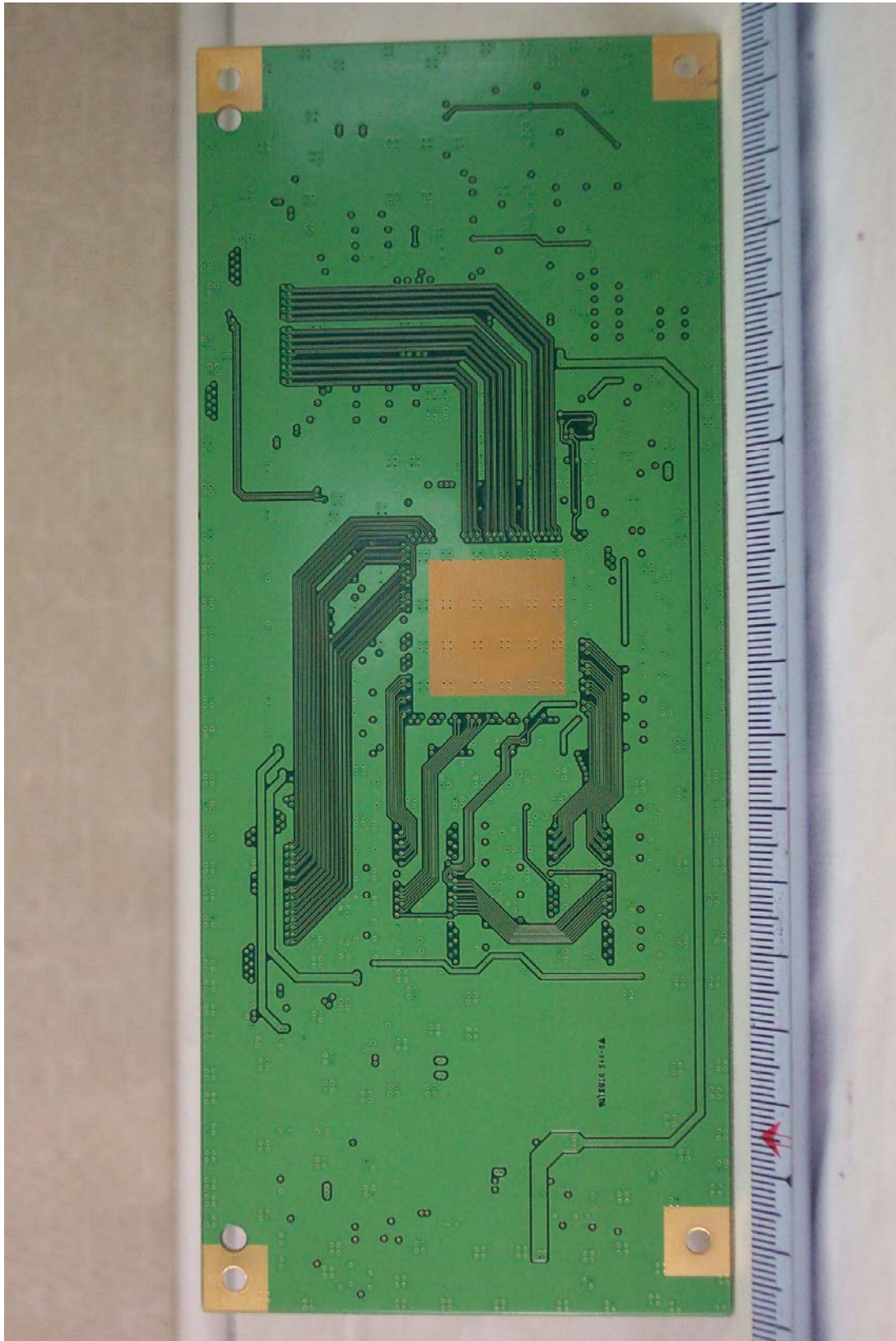
● Rear View of Main Board



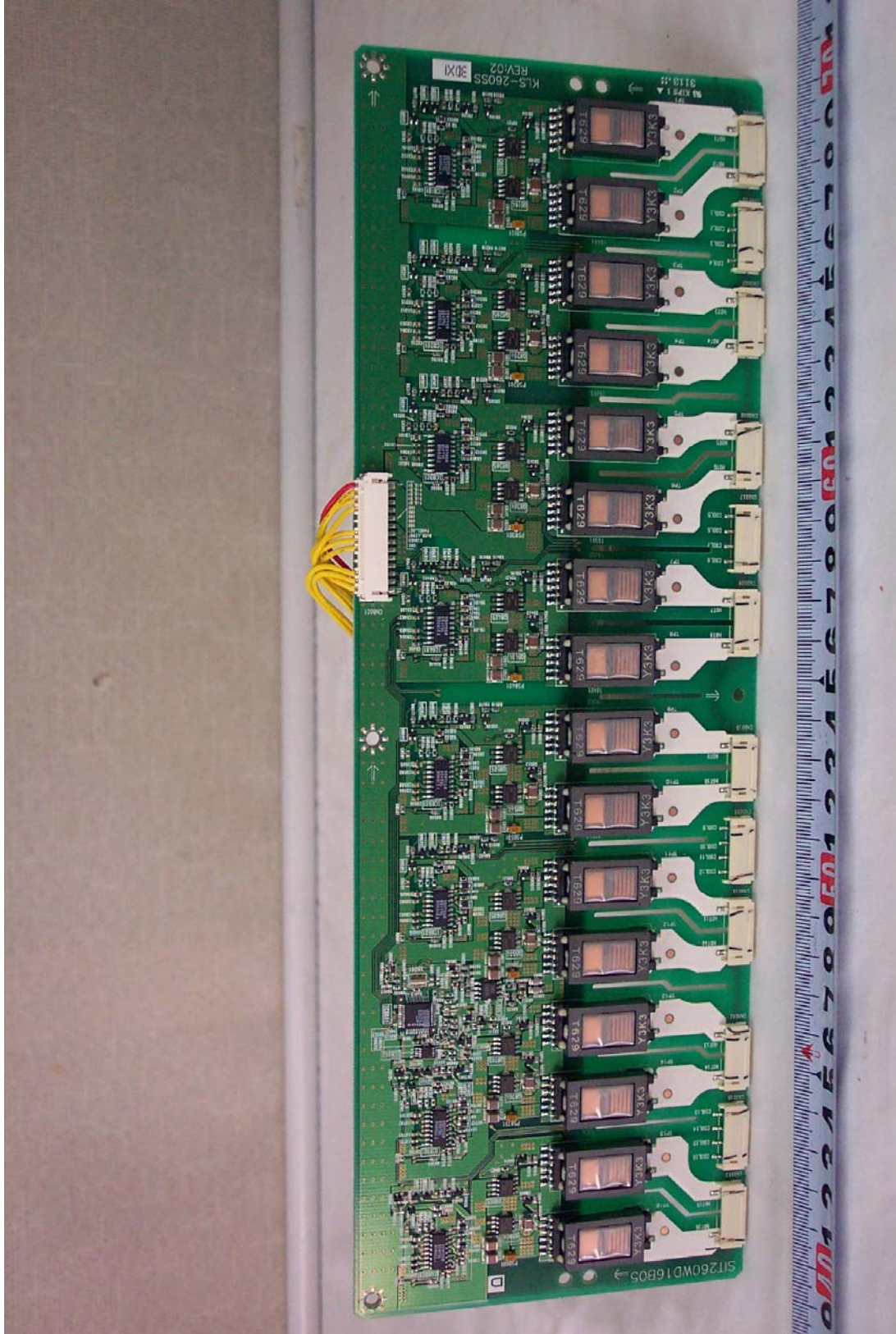
● Front View of LCD Panel Board



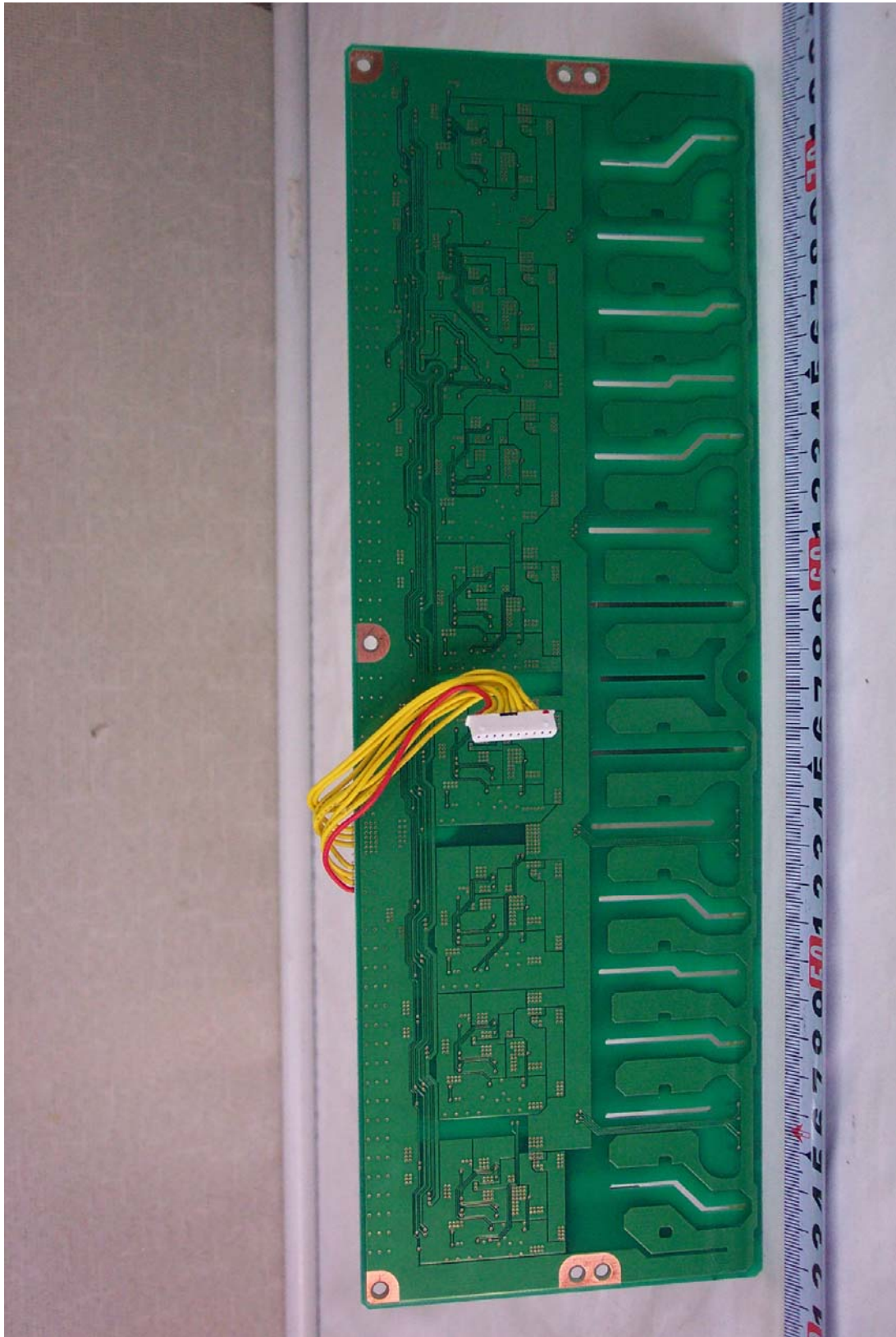
● Rear View of LCD Panel Board



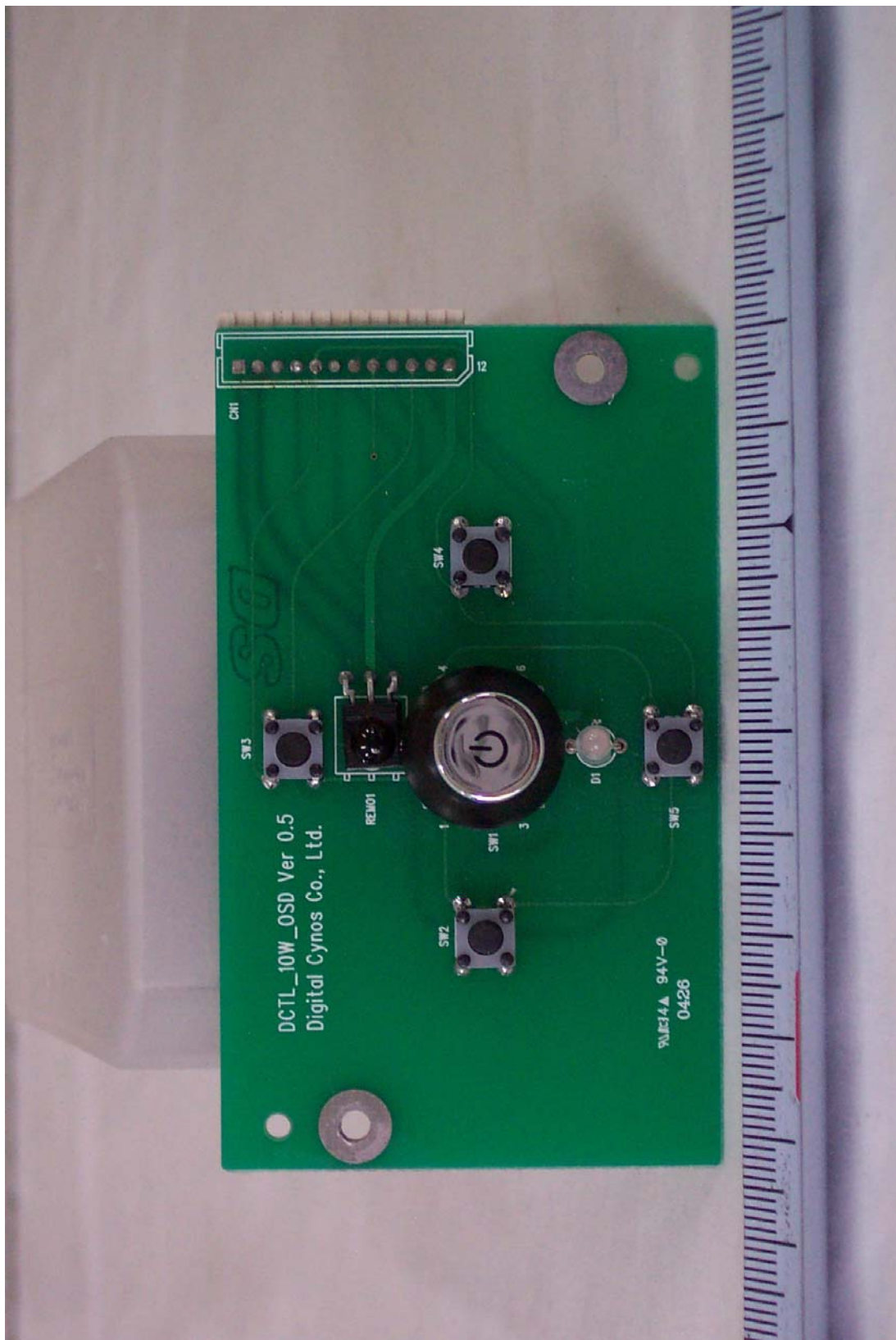
● Front View of Inverter Board



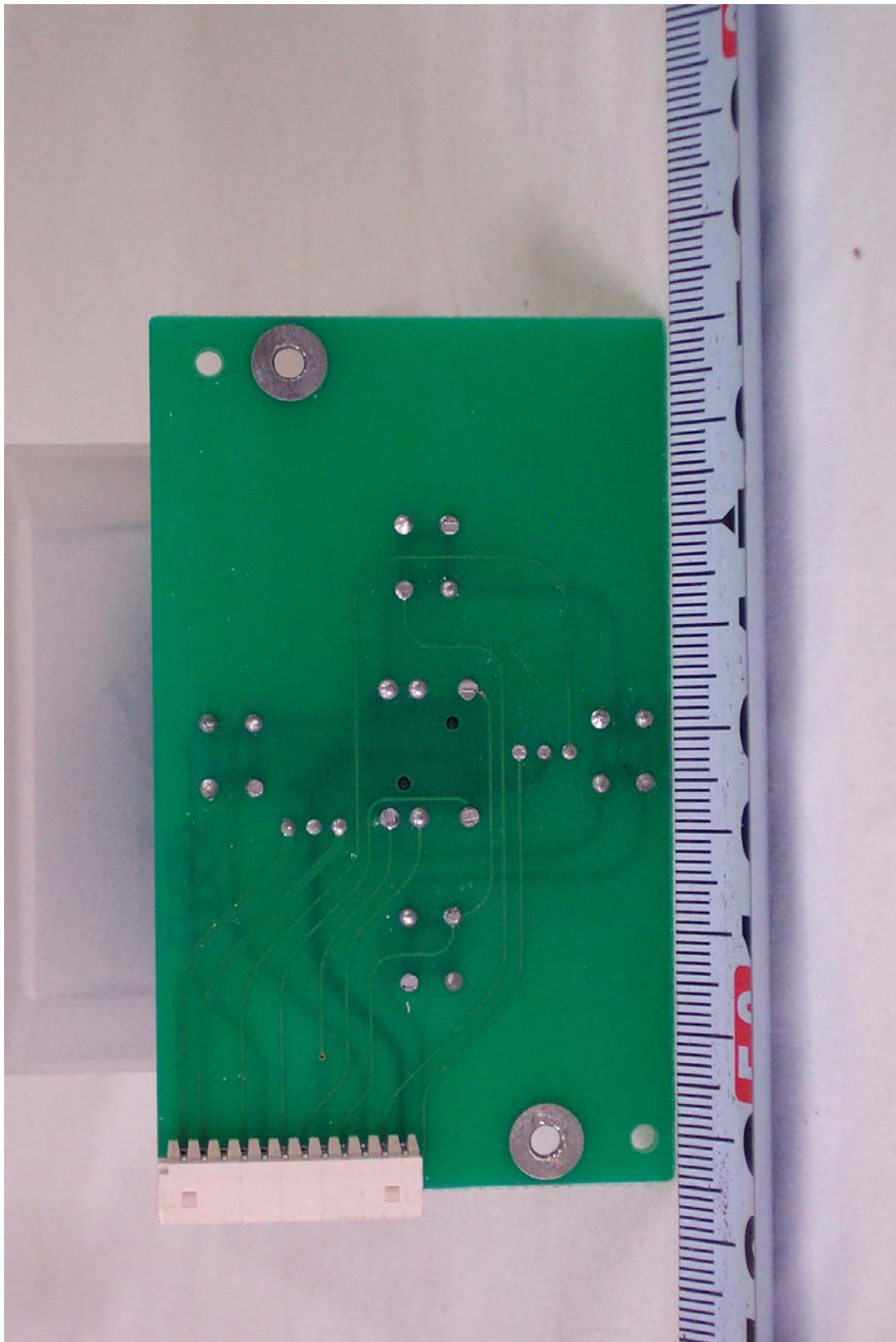
● Rear View of Inverter Board



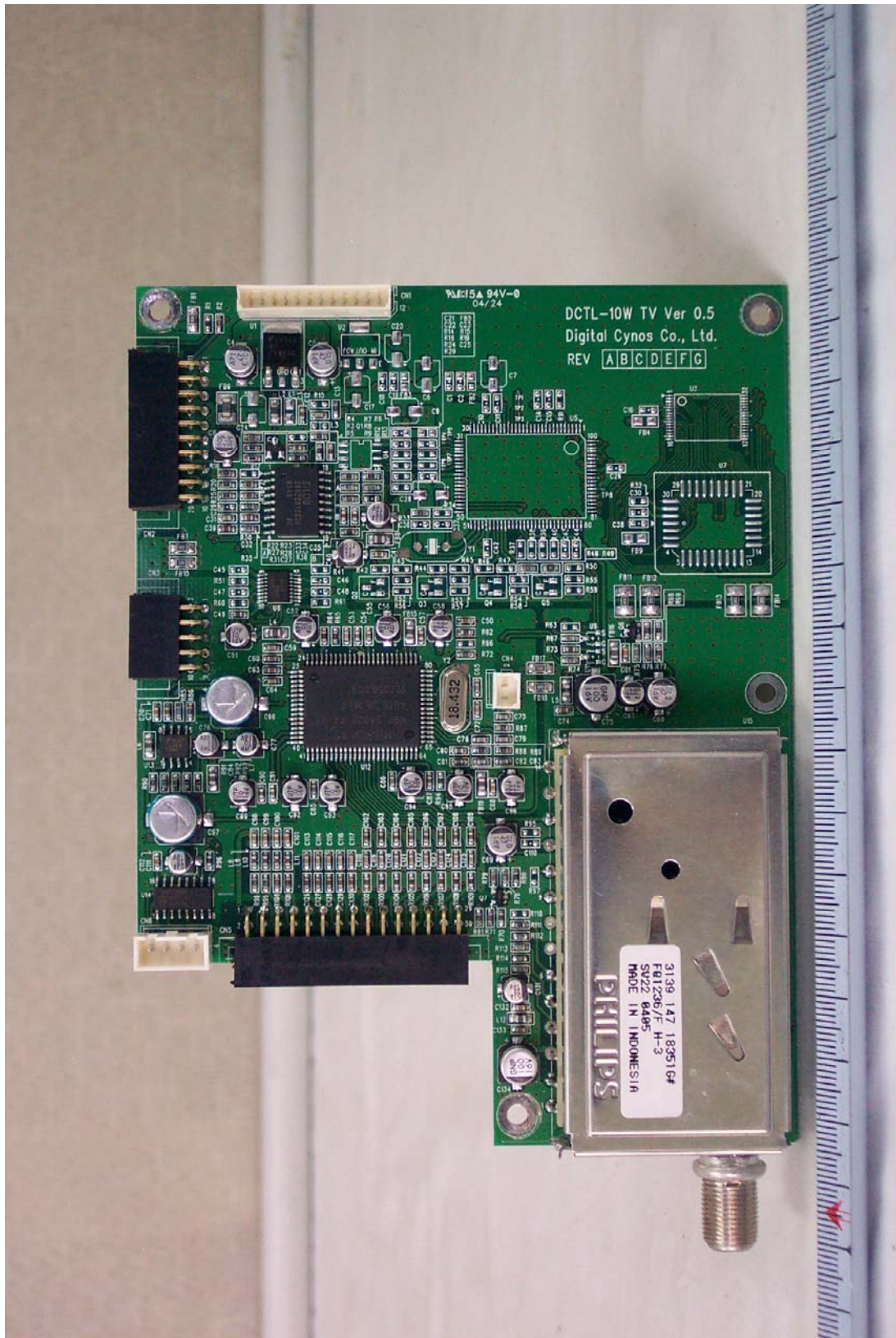
● Front View of OSD Board



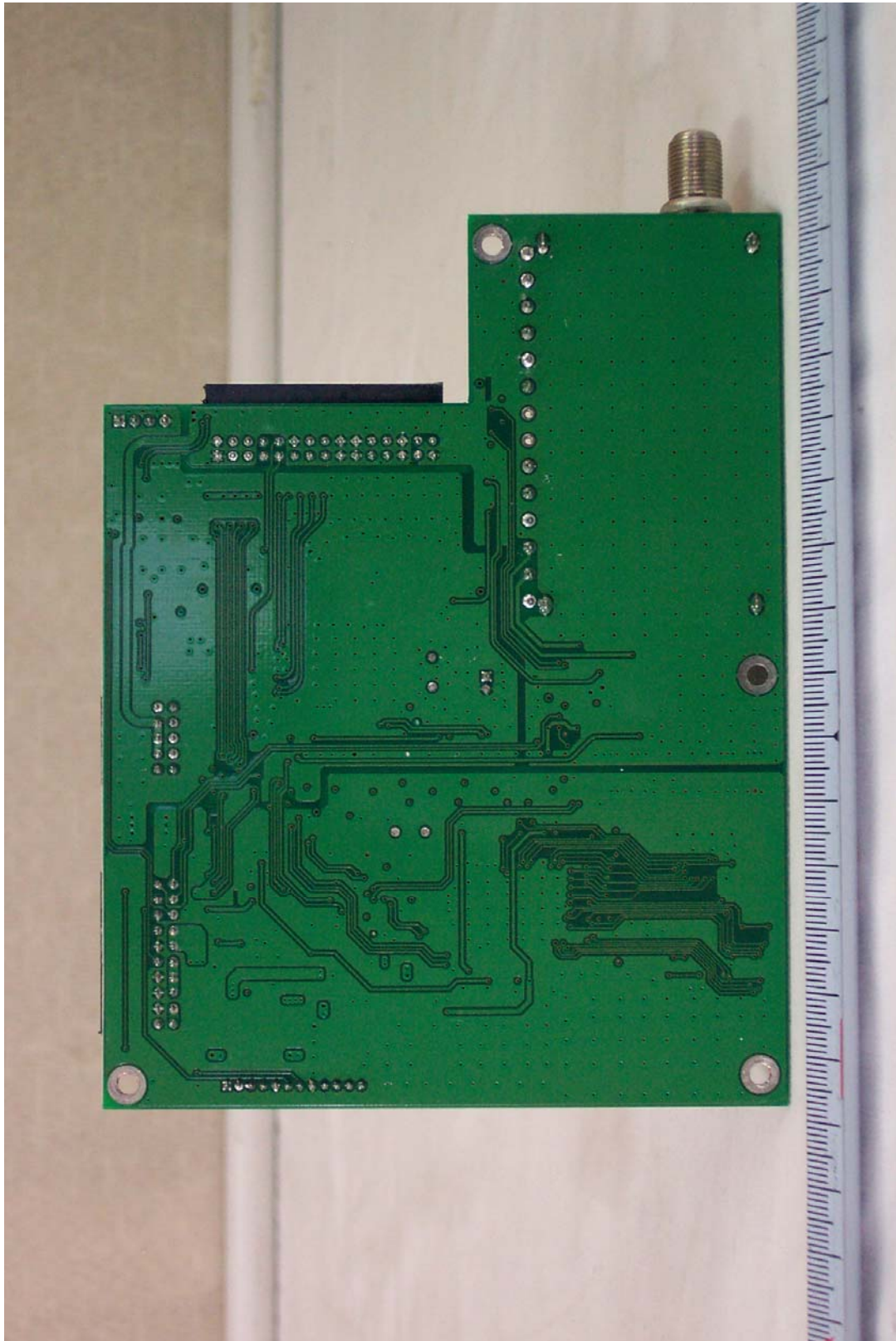
● Rear View of OSD Board



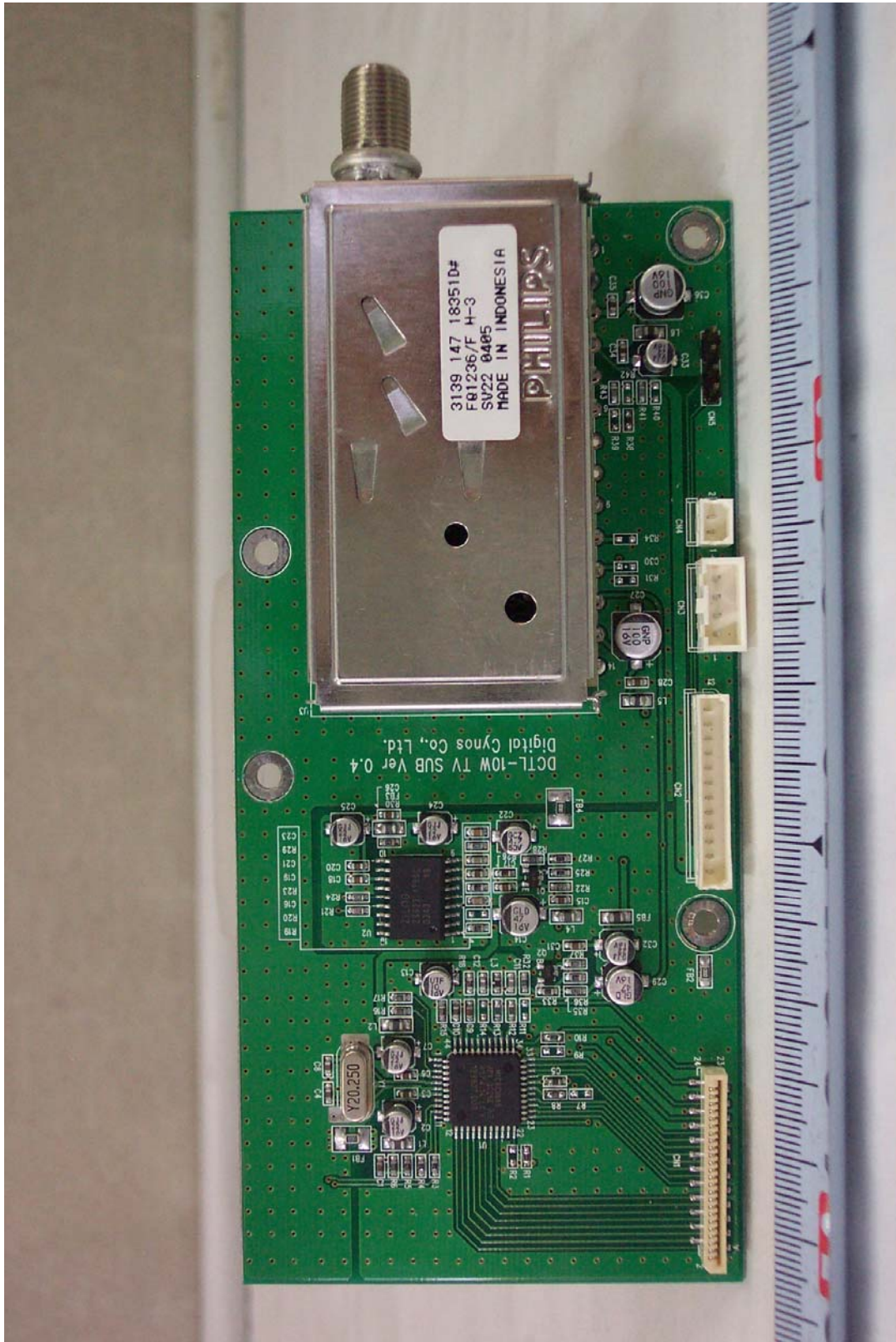
● Front View of TV Tuner Board



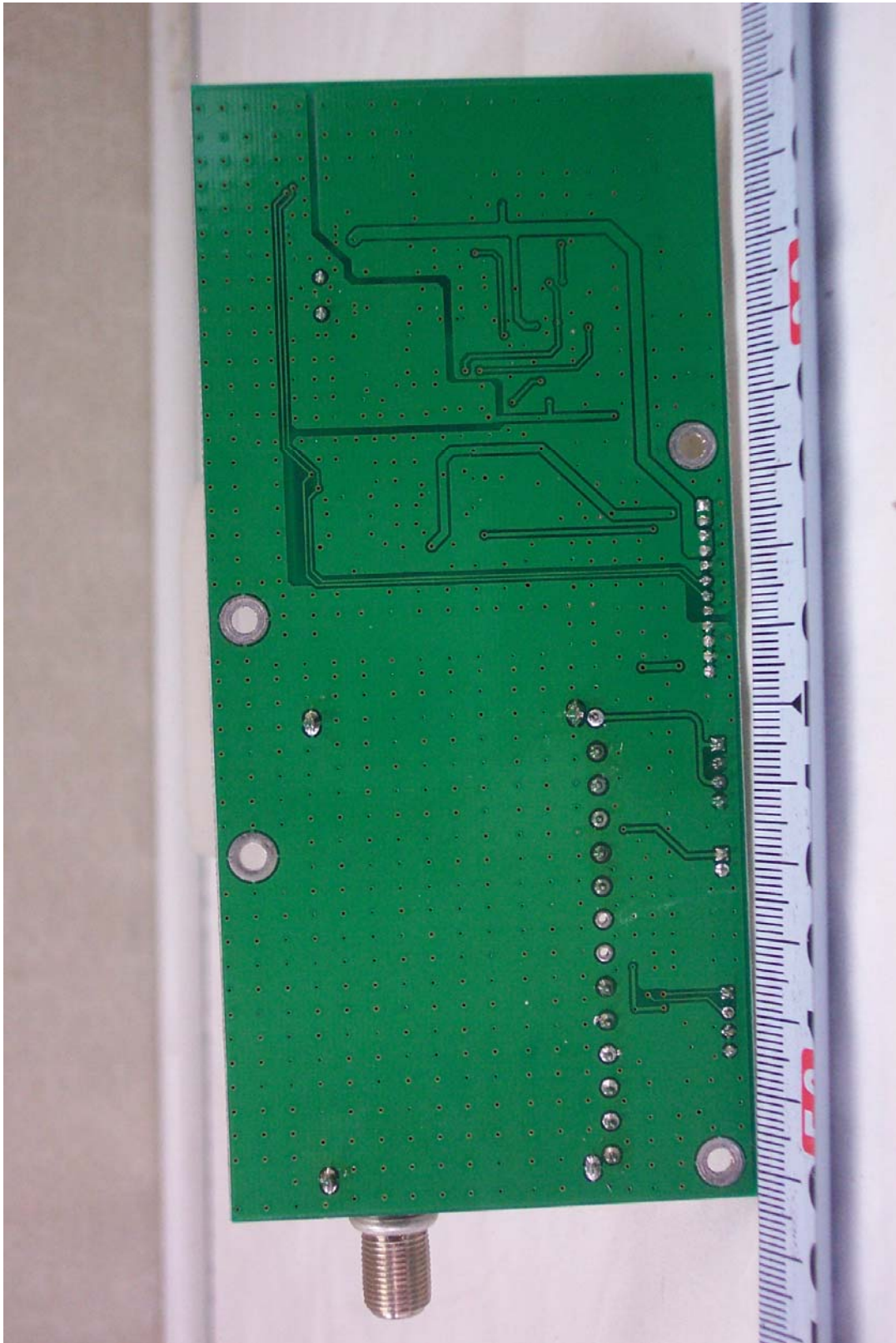
● Rear View of TV Tuner Board



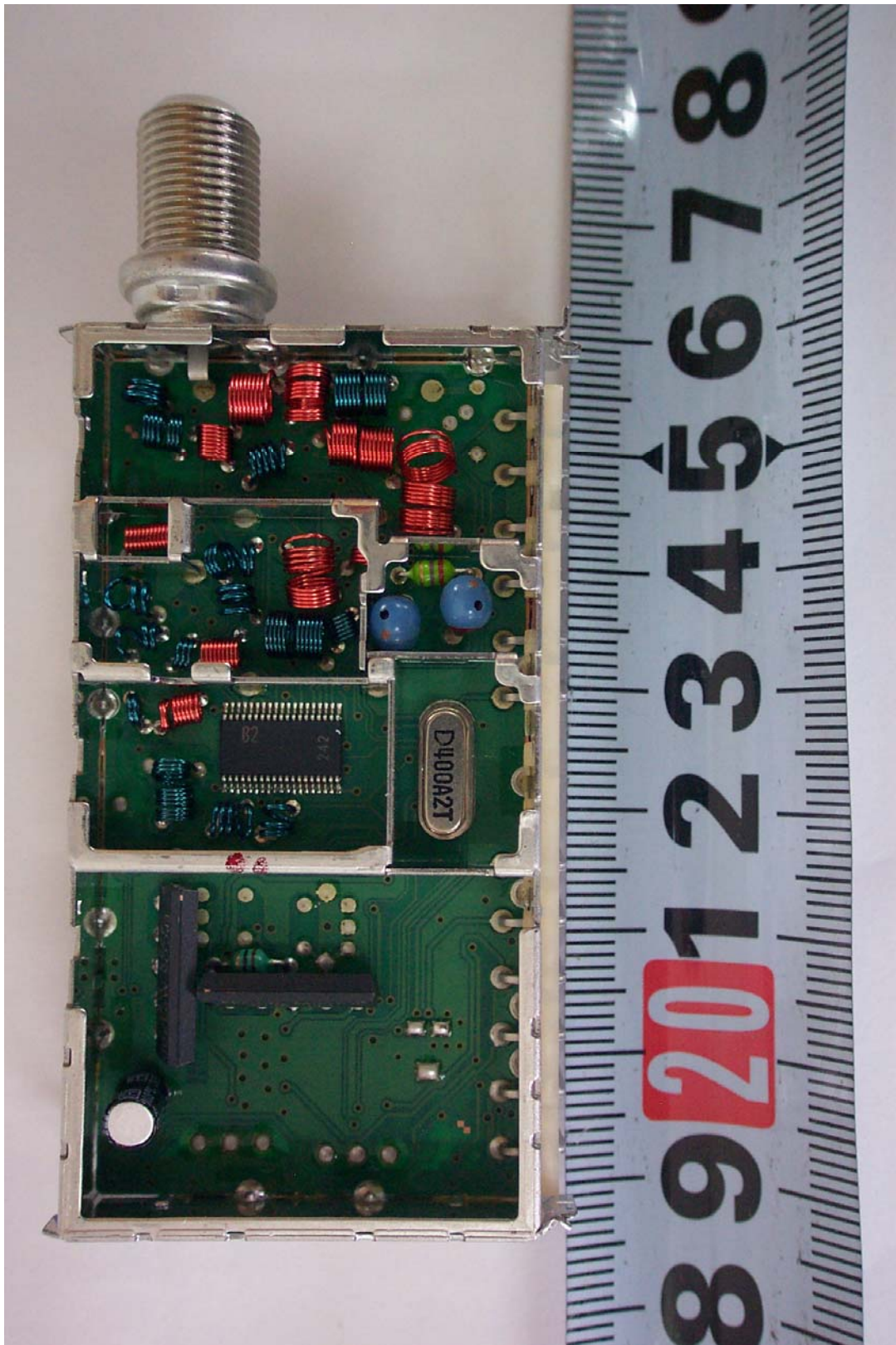
● Front View of TV Tuner Sub Board



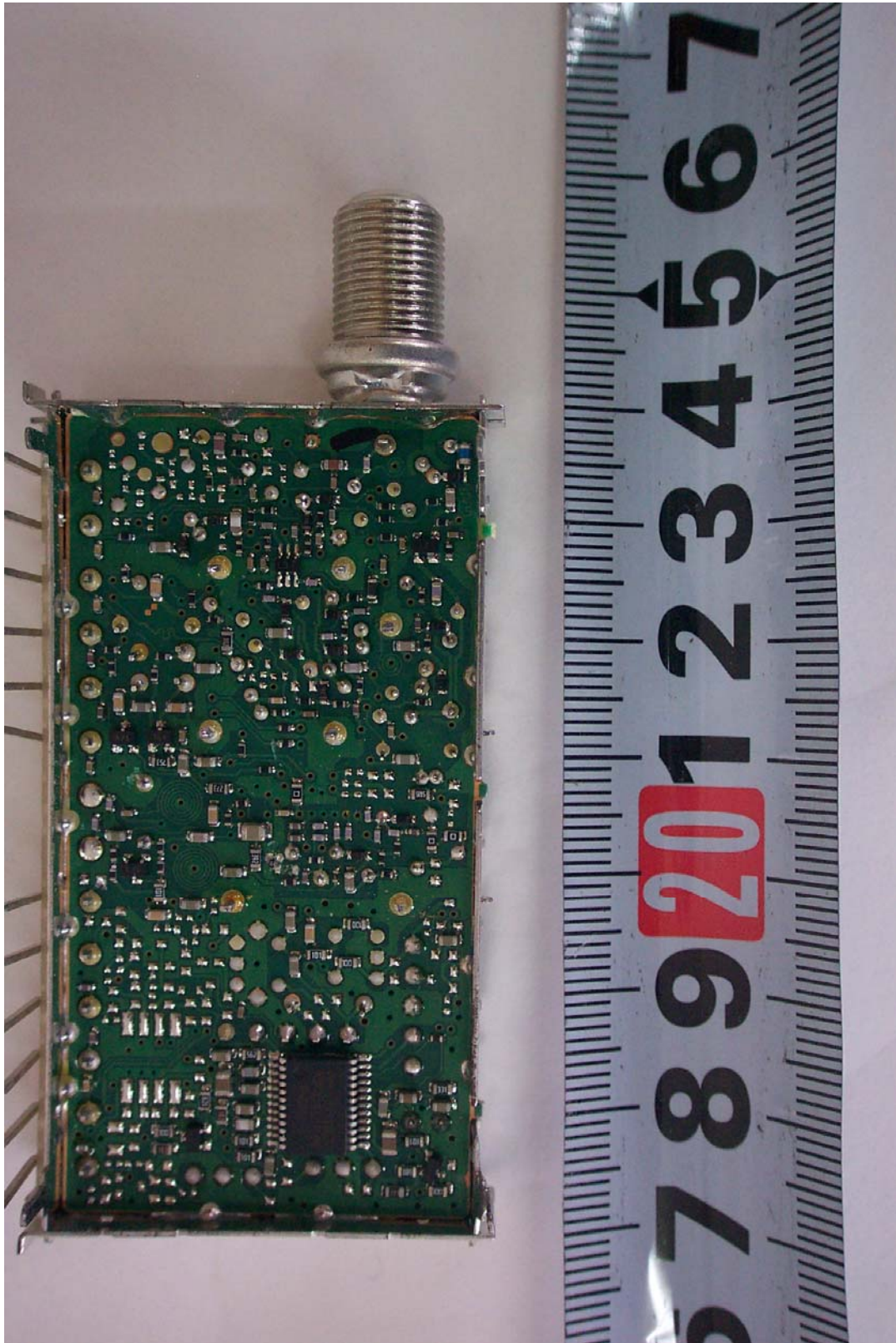
● Rear View of TV Tuner Sub Board



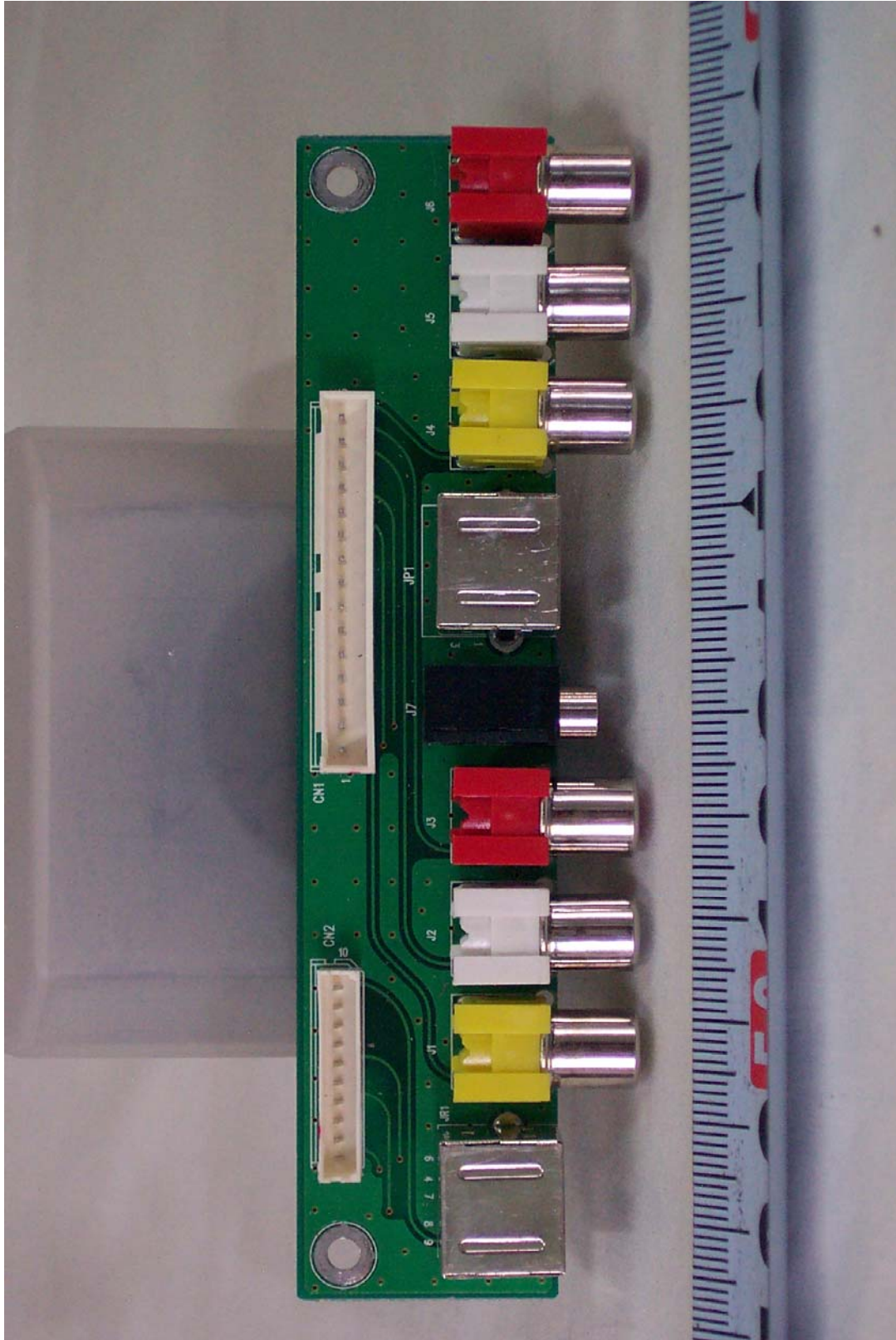
● Front View of TV Board



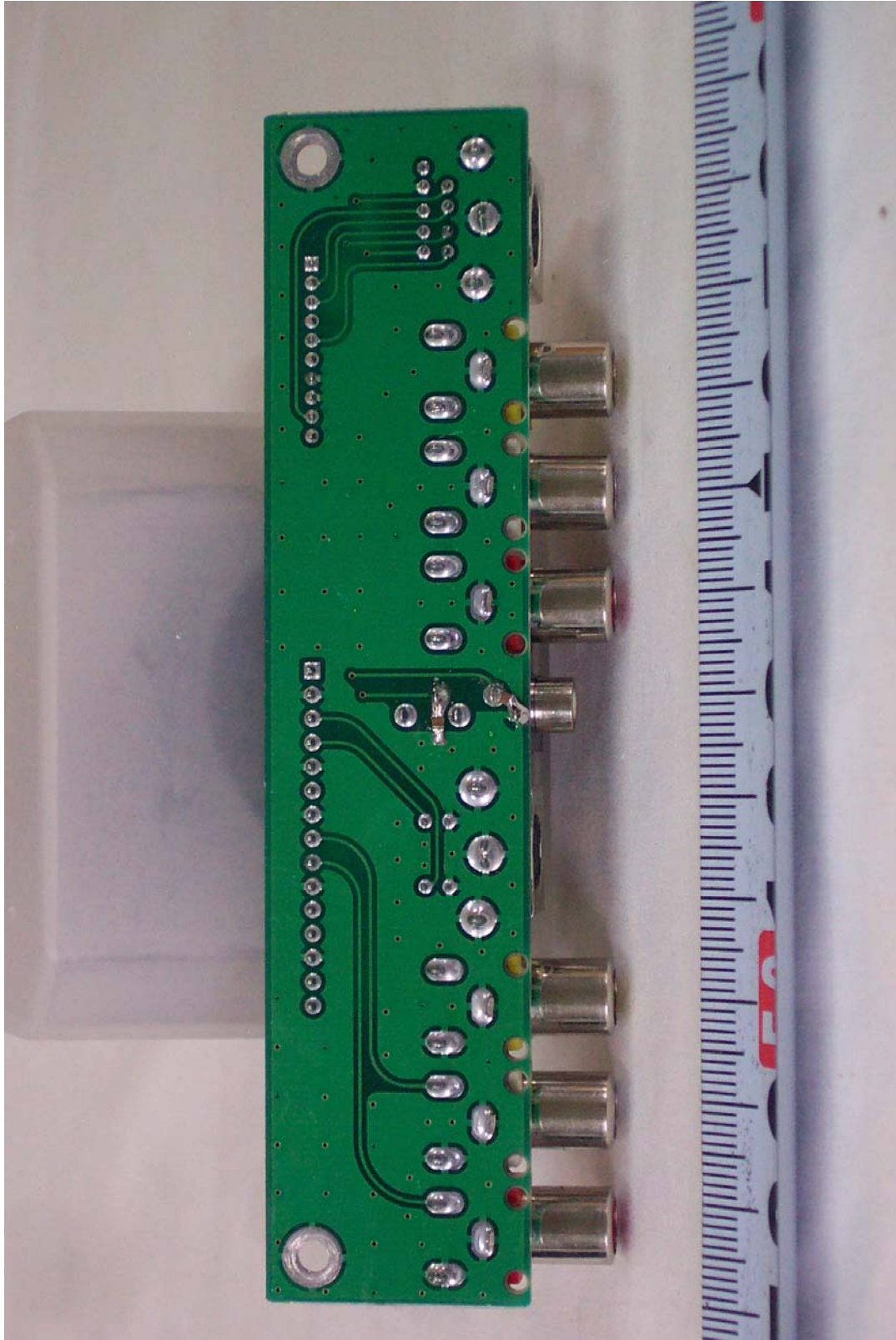
● Rear View of TV Board



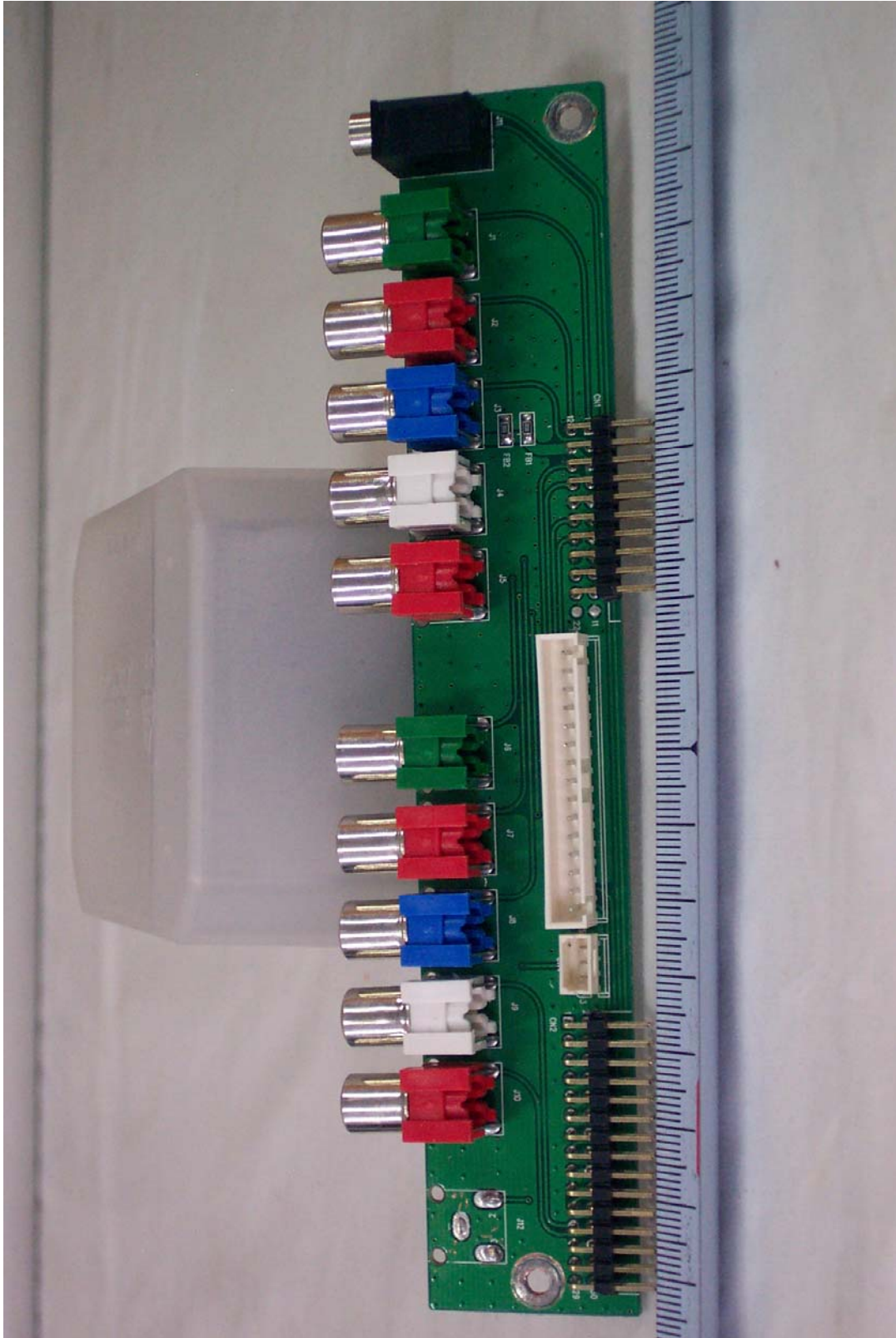
● Front View of Side IO Board



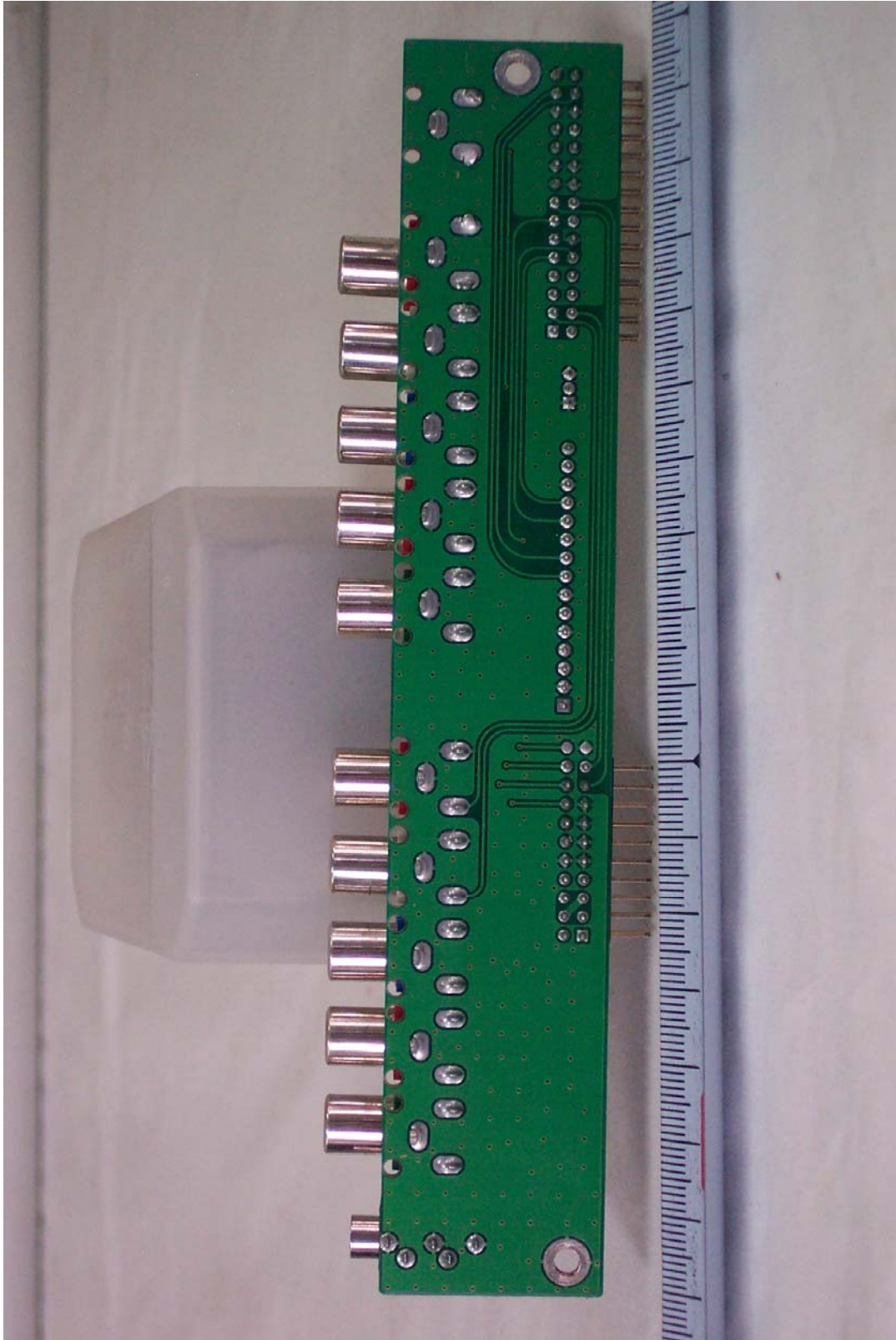
● Rear View of Side IO Board



● Front View of Rear IO Board



● Rear View of Rear IO Board



● Front View of Adaptor



● Rear View of Adaptor

